

**PT-390**

**NFC High Quality Stereo  
Bluetooth Speaker  
&  
Power Bank**

**USER MANUAL**

Thank you for purchasing Bluetooth Speaker PT-390,  
exquisite appearance,easy operation and fashionable design  
make it the best choice for you.

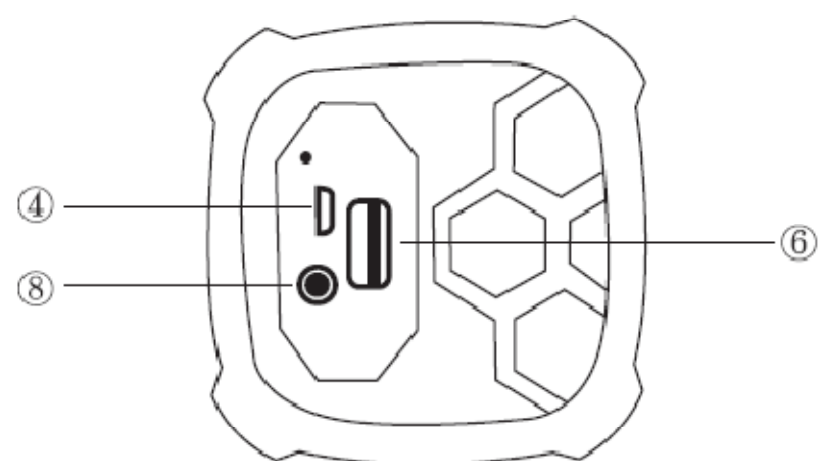
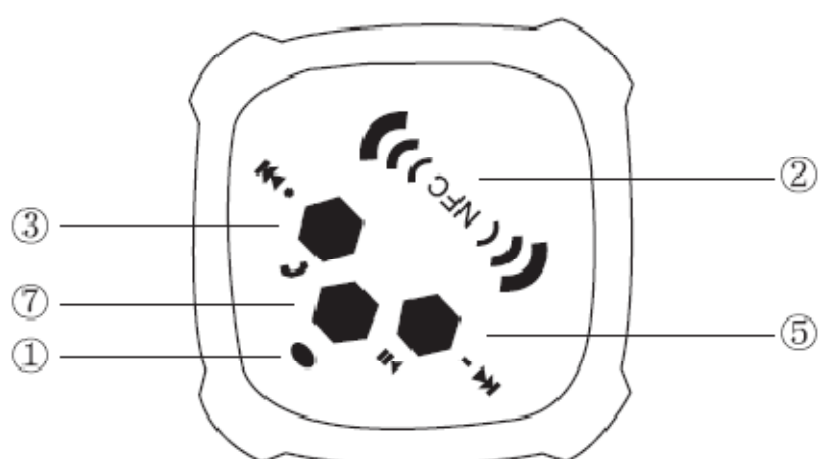
### **Product features:**

- 1) Water resistant Ipx4, Dust proof, Anti-scratch, Shockproof, High temperature Resistant Speaker.
- 2) NFC Technology (Near Field Communication) for easy and instant pairing, Bring more intelligent,convenient,comfortable life.
- 3) Used as 3600MAH Power Bank can charge your phone or other device while you enjoy the music .

Prior to using the speaker,it is recommended to fully charge the speaker and pair it with your Bluetooth devices.

### **1, PT-390 Bluetooth Speaker Overview**

- ① LED Indicator      ② NFC      ③ VOLUME + / Previous track
- ④ Charging Socket    ⑤ VOLUME - / Next track
- ⑥ Power Bank USB Port      ⑦ MFB      ⑧ AUX IN



## **2, Charging Your Speaker**

The red light will be flashing when charging. Once the battery is fully charged, the red light turns to be solid. It takes 3-4 hours to fully charge the speaker.

## **3, Pairing Your Speaker**

In off status, Press and hold the MFB button for 7 seconds, until you can hear "Power On" and "Pairing", it enters pairing status. And you can find it by bluetooth.

Subsequent pairing:

- 1) Active Bluetooth function of your mobile phone.
- 2) Select "More" in the "New Pairing Devices" and search for "PT-390" model.
- 3) Press "ok" in your mobile phone and enter PIN code "0000" to pairing it; or Direct press connect with your phone. With "connects me" voice prompt, Bluetooth connected.

Note: Manual operation is needed for some devices though after pairing completed. It is not necessary to enter the code if your mobile phone Bluetooth version is 2.1 or higher.

#### **4, Using Your Speaker**

.

##### **Answer a call**

——When a call is coming,you will hear the caller ID broadcast with ring tone,press the MFB to answer the call.

##### **Reject a call**

——When a call is coming,press and hold the MFB for 2 seconds to reject it.

##### **Transfer a call**

——During the call,press and hold the MFB for 2 seconds with “Du” tone to transfer the call to your mobile phone.

##### **Ending a call**

——During the talk,press the MFB to end the call and you can hear“Du” tone.

##### **Previous Track**

——In music status ,short press the key to play the previous song.

#### Next Track

——In music status ,short press to play the next song.

#### Volume +

——In music status,long press,Volume plus.

#### Volume -

——In music status, long press,Volume decline.

(Note:adjust the volume appropriately,too high volume may harm your hearing)

#### Play/Pause

——In music status,press the MFB to Pause.Repeat to return to music.

#### NFC Function

——In On status,put your NFC Smart phone on the speaker for NFC connection.

#### Power Bank

——In On or Off status, Plug and Play, power output using the USB port, plug the data cable to achieve portable, ready to charge.

Speaker for Computer

——In ON status, plug 3.5mm audio cable, connecting the speaker and your computer, it can play music from your computer or notebook.

### **Product Specification**

Bluetooth Version: V4.0

Profile Supported: A2DP, AVRCP, Hands free

Frequency: 2402-2480MHZ

Operation Range: 10M

Work time: about 10 hours

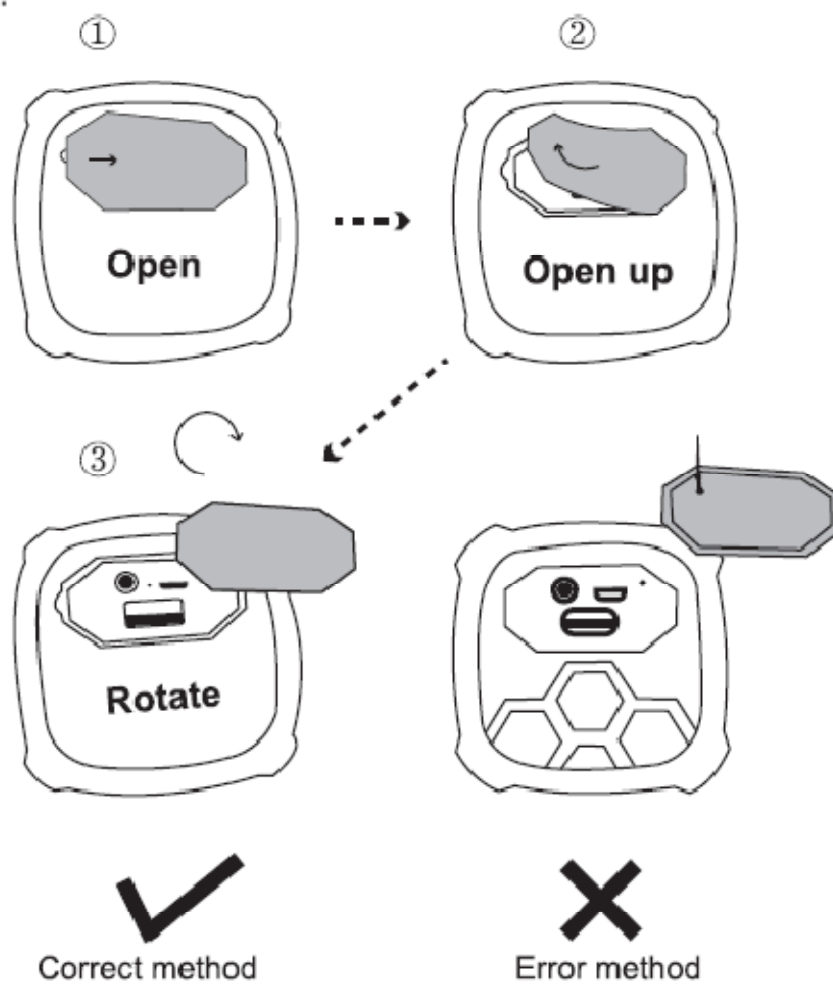
Standby time: ≥90 hours

Charge Time: 3-4 hours

Dimensions: 66\*66\*170mm

Weight: 0.64KG

Note:





**FCC Caution:**

This device complies with part 15 of the FCC Rules. Operation is subject to the following two conditions: (1) This device may not cause harmful interference, and (2) this device must accept any interference received, including interference that may cause undesired operation.

Any Changes or modifications not expressly approved by the party responsible for compliance could void the user's authority to operate the equipment.

**Note:** This equipment has been tested and found to comply with the limits for a Class B digital device, pursuant to part 15 of the FCC Rules. These limits are designed to provide reasonable protection against harmful interference in a residential installation. This equipment generates uses and can radiate radio frequency energy and, if not installed and used in accordance with the instructions, may cause harmful interference to radio communications. However, there is no guarantee that interference will not occur in a particular installation. If this equipment does cause harmful interference to radio or television reception, which can be determined by turning the equipment off and on, the user is encouraged to try to correct the interference by one or more of the following measures:

- Reorient or relocate the receiving antenna.
- Increase the separation between the equipment and receiver.
- Connect the equipment into an outlet on a circuit different from that to which the receiver is connected.
- Consult the dealer or an experienced radio/TV technician for help.