

# FCC Part 95 Rules Test Report

Report No.:AGC02294190301FE10

**FCC ID** : 2AJGM-BFT8  
**PRODUCT DESIGNATION** : Two Way Radio  
**BRAND NAME** : BAOFENG, Pofung  
**MODEL NAME** : BF-T8  
**CLIENT** : PO FUNG ELECTRONIC(HK) INTERNATIOANL GROUP  
COMPANY  
**DATE OF ISSUE** : Mar. 29, 2019  
**STANDARD(S)** : FCC Part 95 Rules  
**REPORT VERSION** : V 1.0

Attestation of Global Compliance (Shenzhen) Co., Ltd

**CAUTION:**

This report shall not be reproduced except in full without the written permission of the test laboratory and shall not be quoted out of context.



The results shown in this test report refer only to the sample(s) tested unless otherwise stated and the sample(s) are retained for 30 days only. The document is issued by AGC, this document cannot be reproduced except in full with our prior written permission. The more details and the authenticity of the report will be confirmed at <http://www.agc-cert.com>.

**Report Revise Record**

Report Version	Revise Time	Issued Date	Valid Version	Notes
V1.0	/	Mar. 29, 2019	Valid	Initial release

The results shown in this test report refer only to the sample(s) tested unless otherwise stated and the sample(s) are retained for 30 days only. The document is issued by AGC, this document cannot be reproduced except in full with our prior written permission. The more details and the authenticity of the report will be confirmed at <http://www.agc-cert.com>.

**VERIFICATION OF COMPLIANCE**

<b>Applicant</b>	PO FUNG ELECTRONIC(HK) INTERNATIOANL GROUP COMPANY
<b>Address</b>	3/F FULOK BLDG 131-133 WING LOK ST SHEUNG WAN, Hong Kong
<b>manufacturer</b>	PO FUNG ELECTRONIC(HK) INTERNATIOANL GROUP COMPANY
<b>Address</b>	3/F FULOK BLDG 131-133 WING LOK ST SHEUNG WAN, Hong Kong
<b>Factory</b>	PO FUNG ELECTRONIC(HK) INTERNATIOANL GROUP COMPANY
<b>Address</b>	3/F FULOK BLDG 131-133 WING LOK ST SHEUNG WAN, Hong Kong
<b>Product Designation:</b>	Two Way Radio
<b>Brand Name:</b>	BAOFENG, Pofung
<b>Test Model</b>	BF-T8
<b>Date of Test:</b>	Mar. 03, 2019~Mar. 29, 2019

**WE HEREBY CERTIFY THAT:**

The above equipment was tested by Attestation of Global Compliance (Shenzhen) Co., Ltd. The data evaluation, test procedures, and equipment configurations shown in this report were made in accordance with the procedures given in TIA/EIA 603. The sample tested as described in this report is in compliance with the FCC Rules Part 95 requirements. The test results of this report relate only to the tested sample identified in this report.

Tested By



Calvin Liu(Liu Junchen)

Mar. 29, 2019

Reviewed By



Max Zhang(Zhang Yi)

Mar. 29, 2019

Approved By



Forrest Lei(Lei Yonggang)

Authorized Officer

Mar. 29, 2019

The results shown in this test report refer only to the sample(s) tested unless otherwise stated and the sample(s) are retained for 30 days only. The document is issued by AGC, this document cannot be reproduced except in full with our prior written permission. The more details and the authenticity of the report will be confirmed at <http://www.agc-cert.com>.



**TABLE OF CONTENTS**

<b>1. GENERAL INFORMATION.....</b>	<b>6</b>
1.1 PRODUCT DESCRIPTION.....	6
1.2 RELATED SUBMITTAL(S) / GRANT (S).....	8
1.3 TEST METHODOLOGY.....	8
1.4 TEST FACILITY .....	8
1.5 SPECIAL ACCESSORIES .....	8
1.6 EQUIPMENT MODIFICATIONS .....	8
<b>2. SYSTEM TEST CONFIGURATION .....</b>	<b>9</b>
2.1 EUT CONFIGURATION.....	9
2.2 EUT EXERCISE .....	9
2.4 CONFIGURATION OF TESTED SYSTEM.....	10
<b>3. SUMMARY OF TEST RESULTS .....</b>	<b>10</b>
<b>4. DESCRIPTION OF TEST MODES.....</b>	<b>12</b>
<b>5. FREQUENCY TOLERANCE.....</b>	<b>13</b>
5.1 PROVISIONS APPLICABLE.....	13
5.2 MEASUREMENT PROCEDURE .....	13
5.3 TEST SETUP BLOCK DIAGRAM.....	14
5.4 TEST RESULT.....	15
<b>6. EMISSION BANDWIDTH.....</b>	<b>17</b>
6.1 PROVISIONS APPLICABLE.....	17
6.2 MEASUREMENT PROCEDURE .....	17
6.3 TEST SETUP BLOCK DIAGRAM.....	17
6.4 MEASUREMENT RESULT .....	19
<b>7. UNWANTED RADIATION.....</b>	<b>23</b>
7.1 PROVISIONS APPLICABLE.....	23
7.2 MEASUREMENT PROCEDURE .....	23
7.3 TEST SETUP BLOCK DIAGRAM.....	24
7.4 MEASUREMENT RESULTS:.....	25
7.5 EMISSION MASK PLOT.....	31
<b>8. MAXIMUM TRANSMITTER POWER .....</b>	<b>35</b>
8.1 PROVISIONS APPLICABLE.....	35
8.2 TEST PROCEDURE .....	35
8.3 TEST CONFIGURATION.....	35
8.4 TEST RESULT.....	37

The results shown in this test report refer only to the sample(s) tested unless otherwise stated and the sample(s) are retained for 30 days only. The document is issued by AGC, this document cannot be reproduced except in full with our prior written permission. The more details and the authenticity of the report will be confirmed at <http://www.agc-cert.com>.

<b>9. MODULATION CHARACTERISTICS</b> .....	<b>38</b>
9.1 PROVISIONS APPLICABLE .....	38
9.2 MEASUREMENT METHOD .....	38
9.3 MEASUREMENT RESULT .....	39
<b>APPENDIX I: PHOTOGRAPHS OF SETUP</b> .....	<b>42</b>
<b>APPENDIX II: EXTERNAL VIEW OF EUT</b> .....	<b>43</b>

The results shown in this test report refer only to the sample(s) tested unless otherwise stated and the sample(s) are retained for 30 days only. The document is issued by AGC, this document cannot be reproduced except in full with our prior written permission. The more details and the authenticity of the report will be confirmed at <http://www.agc-cert.com>.



## 1. GENERAL INFORMATION

### 1.1 PRODUCT DESCRIPTION

The EUT is a Two Way Radio designed for voice communication. It is designed by way of utilizing the FM modulation achieves the system operating.

A major technical description of EUT is described as following:

Product Designation	Two Way Radio
Test Model	BF-T8
Hardware Version	BF_T8_V05
Software Version	BF-T8_V01
Modulation	FM
Channel Separation	12.5KHz
Emission Type	11K0F3E
Emission Bandwidth	10.611KHz
Maximum Transmitter Power	32.01dBm
Rated Output power	2W/0.5W (It was fixed by the manufacturer, any individual can't arbitrarily change it.)
Antenna Designation	Inseparable
Antenna Gain	2.15dBi
Power Supply	DC 3.7V, 1500mAh (by battery)
Limiting Voltage	DC 3.15 V-4.26 V
Operation Frequency Range and Channel	FRS: 462.5500MHz -462.7250MHz, 467.5625 MHz-467.7125 MHz 462.5625MHz -462.7125MHz Test Channel :4, 11 and 19 channel
Frequency Tolerance	1.097ppm

The results shown in this test report refer only to the sample(s) tested unless otherwise stated and the sample(s) are retained for 30 days only. The document is issued by AGC, this document cannot be reproduced except in full with our prior written permission. The more details and the authenticity of the report will be confirmed at <http://www.agc-cert.com>.



**Channel List:**

The FRS is allotted 22 channels, each having a channel bandwidth of 12.5 kHz. All of the FRS channels are also allotted to the General Mobile Radio Service (GMRS) on a shared basis. The FRS channel center frequencies are set forth in the following table:

Operation Frequency Each of Channel					
FRS		FRS		FRS	
Channel	Frequency	Channel	Frequency	Channel	Frequency
1	462.5625 MHz	8	467.5625 MHz	15	462.5500 MHz
2	462.5875 MHz	9	467.5875 MHz	16	462.5750 MHz
3	462.6125 MHz	10	467.6125 MHz	17	462.6000 MHz
4	462.6375 MHz	11	467.6375 MHz	18	462.6250 MHz
5	462.6625 MHz	12	467.6625 MHz	19	462.6500 MHz
6	462.6875 MHz	13	467.6875 MHz	20	462.6750 MHz
7	462.7125 MHz	14	467.7125 MHz	21	462.7000 MHz
				22	462.7250 MHz

The results shown in this test report refer only to the sample(s) tested unless otherwise stated and the sample(s) are retained for 30 days only. The document is issued by AGC, this document cannot be reproduced except in full with our prior written permission. The more details and the authenticity of the report will be confirmed at <http://www.agc-cert.com>.

## 1.2 RELATED SUBMITTAL(S) / GRANT (S)

This submittal(s) (test report) is intended for FCC ID:**2AJGM-BFT8**, filing to comply with the FCC Part 95 requirements.

## 1.3 TEST METHODOLOGY.

The radiated emission testing was performed according to the procedures of TIA/EIA 603.

## 1.4 TEST FACILITY

<b>Test Site</b>	Attestation of Global Compliance (Shenzhen) Co., Ltd
<b>Location</b>	1-2/F, Building 19, Junfeng Industrial Park, Chongqing Road, Heping Community, Fuhai Street, Bao'an District, Shenzhen, Guangdong,China
<b>Designation Number</b>	CN1259
<b>FCC Test Firm Registration Number</b>	975832
<b>A2LA Cert. No.</b>	5054.02
<b>Description</b>	Attestation of Global Compliance(Shenzhen) Co., Ltd is accredited by A2LA

## 1.5 SPECIAL ACCESSORIES

Not available for this EUT intended for grant.

## 1.6 EQUIPMENT MODIFICATIONS

Not available for this EUT intended for grant.

The results shown in this test report refer only to the sample(s) tested unless otherwise stated and the sample(s) are retained for 30 days only. The document is issued by AGC, this document cannot be reproduced except in full with our prior written permission. The more details and the authenticity of the report will be confirmed at <http://www.agc-cert.com>.



## 2. SYSTEM TEST CONFIGURATION

### 2.1 EUT CONFIGURATION

The EUT configuration for testing is installed on RF field strength measurement to meet the Commission's requirement and operating in a manner which intends to maximize its emission characteristics in a continuous normal application.

### 2.2 EUT EXERCISE

The Transmitter was operated in the normal operating mode. The TX frequency was fixed which was for the purpose of the measurements.

The results shown in this test report refer only to the sample(s) tested unless otherwise stated and the sample(s) are retained for 30 days only. The document is issued by AGC, this document cannot be reproduced except in full with our prior written permission. The more details and the authenticity of the report will be confirmed at <http://www.agc-cert.com>.

## 2.4 CONFIGURATION OF TESTED SYSTEM

Fig. 2-1 Configuration of Tested System



Table 2-1 Equipment Used in Tested System

Item	Equipment	Model No.	Identifier	Note
1	Two Way Radio	BF-T8	FCC ID: 2AJGM-BFT8	EUT
2	USB Cable	N/A	N/A	Accessories
3	Earphone	N/A	N/A	Accessories
4	Jacket	N/A	N/A	Accessories

## 3. SUMMARY OF TEST RESULTS

FCC 47 CFR Part 95 Test Cases			
Test Item	Test Requirement	Test Method	Result
<b>Maximum Transmitter Power</b>	FCC 47 CFR Part 95.567 FCC 47 CFR Part 2.1046(a)	ANSI/TIA-603-E-2016	PASS
<b>Modulation Limit</b>	FCC 47 CFR Part 95.575 FCC 47 CFR Part 2.1047(a)(b)	ANSI/TIA-603-E-2016	PASS
<b>Audio Frequency Response</b>	FCC 47 CFR Part 95.575 FCC 47 CFR Part 2.1047(a)	ANSI/TIA-603-E-2016	PASS
<b>Emission Bandwidth</b>	FCC 47 CFR Part 95.573	ANSI/TIA-603-E-2016	PASS
<b>Emission Mask</b>	FCC 47 CFR Part 95.579	ANSI/TIA-603-E-2016	PASS
<b>Transmitter Radiated Spurious Emission</b>	FCC 47 CFR Part 95.579	ANSI/TIA-603-E-2016	PASS
<b>Spurious Emission On Antenna Port</b>	FCC 47 CFR Part 95.579	ANSI/TIA-603-E-2016	N/A Note 1, 2
<b>Frequency Stability</b>	FCC 47 CFR Part 95.565 FCC 47 CFR Part 2.1055 (a)(1)	ANSI/TIA-603-E-2016	PASS

**Note:**

- 1) N/A: In this whole report not application.
- 2) The EUT is Integral Antenna.

The results shown in this test report refer only to the sample(s) tested unless otherwise stated and the sample(s) are retained for 30 days only. The document is issued by AGC, this document cannot be reproduced except in full with our prior written permission. The more details and the authenticity of the report will be confirmed at <http://www.agc-cert.com>.

**LIST OF EQUIPMENTS USED**

Equipment	Manufacturer	Model	S/N	Cal. Date	Cal. Due
TEST RECEIVER	R&S	ESCI	10096	Jun.12, 2018	Jun.11, 2019
EXA Signal Analyzer	Aglient	N9010A	MY53470504	Dec. 20, 2018	Dec. 19, 2019
Horn antenna	SCHWARZBECK	BBHA 9170	#768	Sep.20, 2017	Sep.19, 2019
preamplifier	ChengYi	EMC184045SE	980508	Jun.12, 2018	Jun.11, 2019
Double-Ridged Waveguide Horn	ETS LINDGREN	3117	00034609	May 18, 2017	May 17, 2019
Broadband Preamplifier	SCHWARZBECK	BBV 9718	9718-205	Jun.12, 2018	Jun.11, 2019
HORN ANTENNA	EM	EM-AH-10180	/	Mar.01, 2018	Feb.29, 2020
ANTENNA	SCHWARZBECK	VULB9168	VULB9168-494	Mar.01, 2018	Feb.29, 2020
ANTENNA	SCHWARZBECK	VULB9168	D69250	Sep.28, 2017	Sep.27, 2019
Small environmental tester	ESPEC	SH-242	--	Feb. 27, 2019	Feb. 26, 2020
RF Communication Test Set	HP	HP8920B	--	Jun.12, 2018	Jun.11, 2019
Loop Antenna	A.H.Systems,Inc	SAS-562B	--	Mar.01, 2018	Feb.28, 2020

Note: 8920B can generate audio modulation frequency.

The results shown in this test report refer only to the sample(s) tested unless otherwise stated and the sample(s) are retained for 30 days only. The document is issued by AGC, this document cannot be reproduced except in full with our prior written permission. The more details and the authenticity of the report will be confirmed at <http://www.agc-cert.com>.



#### 4. DESCRIPTION OF TEST MODES

##### RF TEST MODES

The EUT (Two Way Radio) has been tested under normal operating condition. (FRS TX) are chosen for testing at each channel separation.

No.	TEST MODES	CHANNEL SEPARATION
1	FRS TX	12.5 KHz

**Note:** Only the result of the worst case was recorded in the report.

The results shown in this test report refer only to the sample(s) tested unless otherwise stated and the sample(s) are retained for 30 days only. The document is issued by AGC, this document cannot be reproduced except in full with our prior written permission. The more details and the authenticity of the report will be confirmed at <http://www.agc-cert.com>.

## 5. FREQUENCY TOLERANCE

### 5.1 PROVISIONS APPLICABLE

Standard Applicable [Part 95.565]The carrier frequency stability is the ability of the transmitter to maintain an assigned carrier frequency.

FCC Part 95.565,

FRS: The carrier frequency tolerance shall be better than  $\pm 2.5$  ppm.

### 5.2 MEASUREMENT PROCEDURE

#### 5.2.1 Frequency stability versus environmental temperature

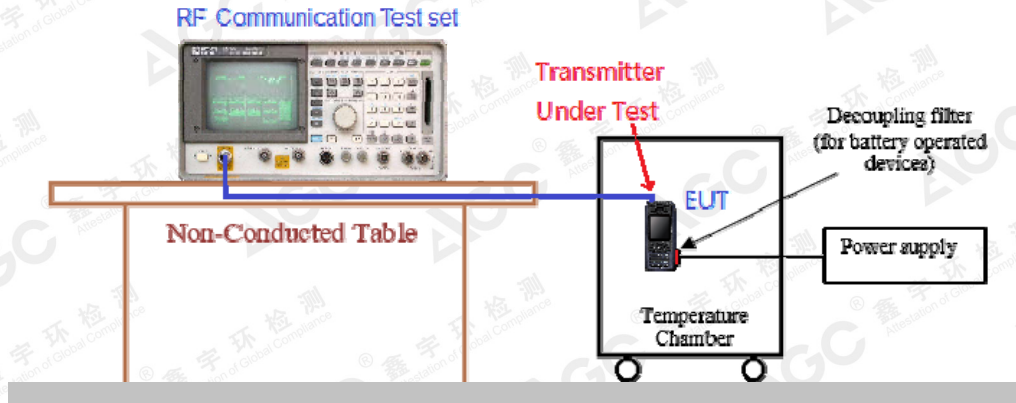
1. Setup the configuration per figure 1 for frequencies measurement inside an environment chamber, Install new battery in the EUT.
2. Turn on EUT and set SA center frequency to the EUT radiated frequency. Set SA Resolution Bandwidth to 1KHz and Video Resolution Bandwidth to 1KHz and Frequency Span to 50KHz.Record this frequency as reference frequency.
3. Set the temperature of chamber to 50°C . Allow sufficient time (approximately 30 min) for the temperature of the chamber to stabilize. While maintaining a constant temperature inside the chamber, turn the EUT on and measure the EUT operating frequency.
4. Repeat step 2 with a 10°C decreased per stage until the lowest temperature -30°C is measured, record all measured frequencies on each temperature step.

#### 5.2.2 Frequency stability versus input voltage

1. Setup the configuration per figure 1 for frequencies measured at temperature if it is within 15°C to 25°C . Otherwise, an environment chamber set for a temperature of 20°C shall be used. The EUT shall be powered by DC 3.7V.
2. Set SA center frequency to the EUT radiated frequency. Set SA Resolution Bandwidth to 1 KHz and Video Resolution Bandwidth to 1KHz. Record this frequency as reference frequency.
3. Supply the EUT primary voltage at the operating end point which is specified by manufacturer and record the frequency.

The results shown in this test report refer only to the sample(s) tested unless otherwise stated and the sample(s) are retained for 30 days only. The document is issued by AGC, this document cannot be reproduced except in full with our prior written permission. The more details and the authenticity of the report will be confirmed at <http://www.agc-cert.com>.

### 5.3 TEST SETUP BLOCK DIAGRAM



The results shown in this test report refer only to the sample(s) tested unless otherwise stated and the sample(s) are retained for 30 days only. The document is issued by AGC, this document cannot be reproduced except in full with our prior written permission. The more details and the authenticity of the report will be confirmed at <http://www.agc-cert.com>.



**5.3 TEST RESULT**
**(1) Frequency stability versus input voltage (Supply nominal voltage is 3.70V)-2W**

Environment Temperature(°C)	Power (V)	Reference Frequency		Limit: ppm
		462.6375MHz	462.6500MHz	
50	DC 3.70 V	0.918	0.527	±2.5for FRS
40	DC 3.70	0.875	0.759	
30	DC 3.70	0.759	0.653	
20	DC 3.70	0.863	0.649	
10	DC 3.70	0.742	0.851	
0	DC 3.70	0.619	0.775	
-10	DC 3.70	0.557	0.649	
-20	DC 3.70	0.726	0.735	
-30	DC 3.70	0.882	0.826	
Result	Pass			

**(2) Frequency stability versus input voltage (Battery Fully Charged voltage is 4.26V)-2W**

Environment Temperature(°C)	Power (V)	Reference Frequency		Limit: ppm
		462.6375MHz	462.6500MHz	
50	DC 4.26	0.719	0.749	±2.5for FRS
40	DC 4.26	0.875	0.875	
30	DC 4.26	0.984	0.581	
20	DC 4.26	0.734	0.638	
10	DC 4.26	0.856	1.042	
0	DC 4.26	0.686	0.761	
-10	DC 4.26	0.519	0.986	
-20	DC 4.26	0.858	0.575	
-30	DC 4.26	0.969	0.559	
Result	Pass			

**(3) Frequency stability versus input voltage (Supply nominal voltage is 3.70V)-0.5W**

Environment Temperature(°C)	Power (V)	Reference Frequency			Limit: ppm
		462.6375MHz	462.6500MHz	467.6375MHz	
50	DC 3.70 V	0.822	0.653	0.707	±2.5for FRS
40	DC 3.70 V	1.032	0.916	0.627	
30	DC 3.70 V	1.017	0.682	0.803	
20	DC 3.70 V	0.638	1.074	0.982	
10	DC 3.70 V	0.630	0.757	0.749	
0	DC 3.70 V	0.689	1.074	0.980	
-10	DC 3.70 V	0.745	0.661	0.954	
-20	DC 3.70 V	0.507	0.955	0.731	
-30	DC 3.70 V	0.625	0.529	0.603	
Result	Pass				

The results shown in this test report refer only to the sample(s) tested unless otherwise stated and the sample(s) are retained for 30 days only. The document is issued by AGC, this document cannot be reproduced except in full with our prior written permission. The more details and the authenticity of the report will be confirmed at <http://www.agc-cert.com>.

## (4) Frequency stability versus input voltage (Battery Fully Charged voltage is 4.26V)-0.5W

Environment Temperature(°C)	Power (V)	Reference Frequency			Limit: ppm
		462.6375MHz	462.6500MHz	467.6375MHz	
50	DC 4.26	0.600	0.653	0.867	±2.5for FRS
40	DC 4.26	0.525	0.506	0.569	
30	DC 4.26	0.872	1.073	0.684	
20	DC 4.26	0.532	0.669	0.795	
10	DC 4.26	0.746	0.772	0.821	
0	DC 4.26	1.064	1.015	1.096	
-10	DC 4.26	0.945	0.904	0.509	
-20	DC 4.26	0.989	0.917	0.862	
-30	DC 4.26	0.920	1.097	1.018	
Result	Pass				

The results shown in this test report refer only to the sample(s) tested unless otherwise stated and the sample(s) are retained for 30 days only. The document is issued by AGC, this document cannot be reproduced except in full with our prior written permission. The more details and the authenticity of the report will be confirmed at <http://www.agc-cert.com>.



## 6. EMISSION BANDWIDTH

### 6.1 PROVISIONS APPLICABLE

FCC Part 95.573: FRS: The authorized bandwidth for an FRS unit is 12.5 kHz.

Occupied Bandwidth (Section 2.1049, 95.573): The EUT was connected to the audio signal generator and the spectrum analyzer via the main RF connector, and through an appropriate attenuator. The EUT was controlled to transmit its maximum power. Then the bandwidth of 99% power can be measured by the spectrum analyzer.

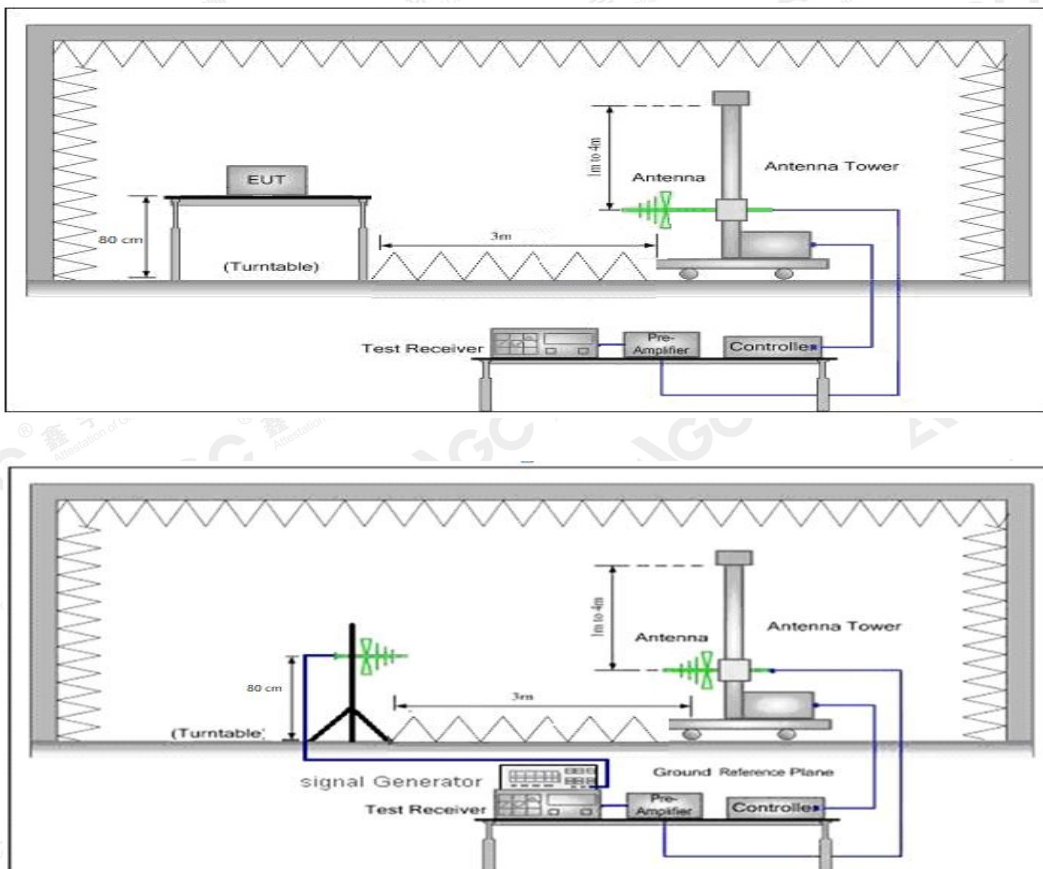
### 6.2 MEASUREMENT PROCEDURE

- 1). The EUT was modulated by 2.5 KHz Sine wave audio signal, The level of the audio signal employed is 16 dB greater than that necessary to produce 50% of rated system deviation. Rated system deviation is 2.5 kHz (12.5 kHz channel spacing).
- 2). Set SPA Center Frequency = fundamental frequency, RBW=100Hz.VBW= 300 Hz, Span =50 KHz.
- 3). Set SPA Max hold. Mark peak, -26 dB.

### 6.3 TEST SETUP BLOCK DIAGRAM

Radiation method:

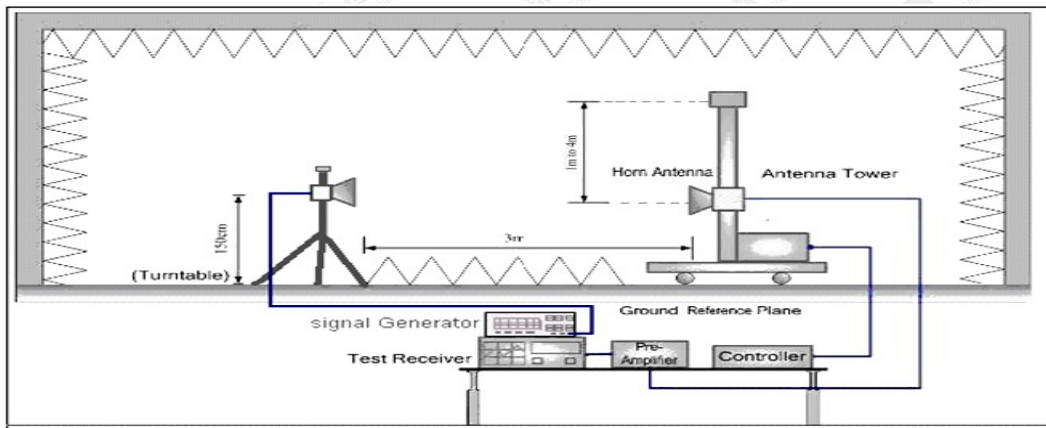
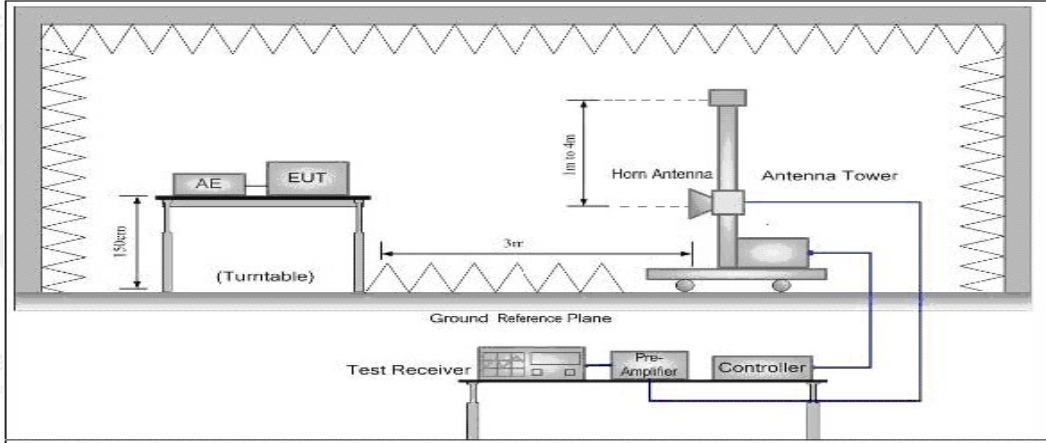
Radiated Below 1GHz



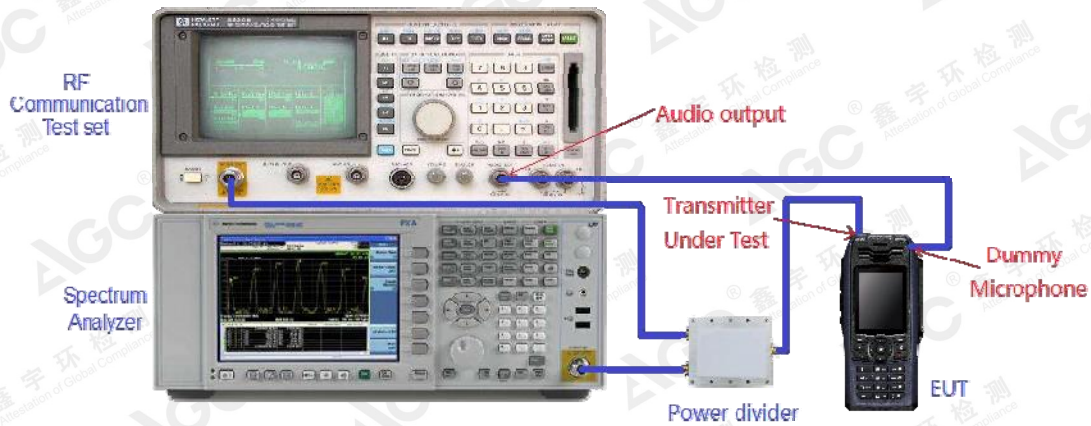
The results shown in this test report refer only to the sample(s) tested unless otherwise stated and the sample(s) are retained for 30 days only. The document is issued by AGC, this document cannot be reproduced except in full with our prior written permission. The more details and the authenticity of the report will be confirmed at <http://www.agc-cert.com>.



**Radiated Above 1 GHz**



**Conduction method:**

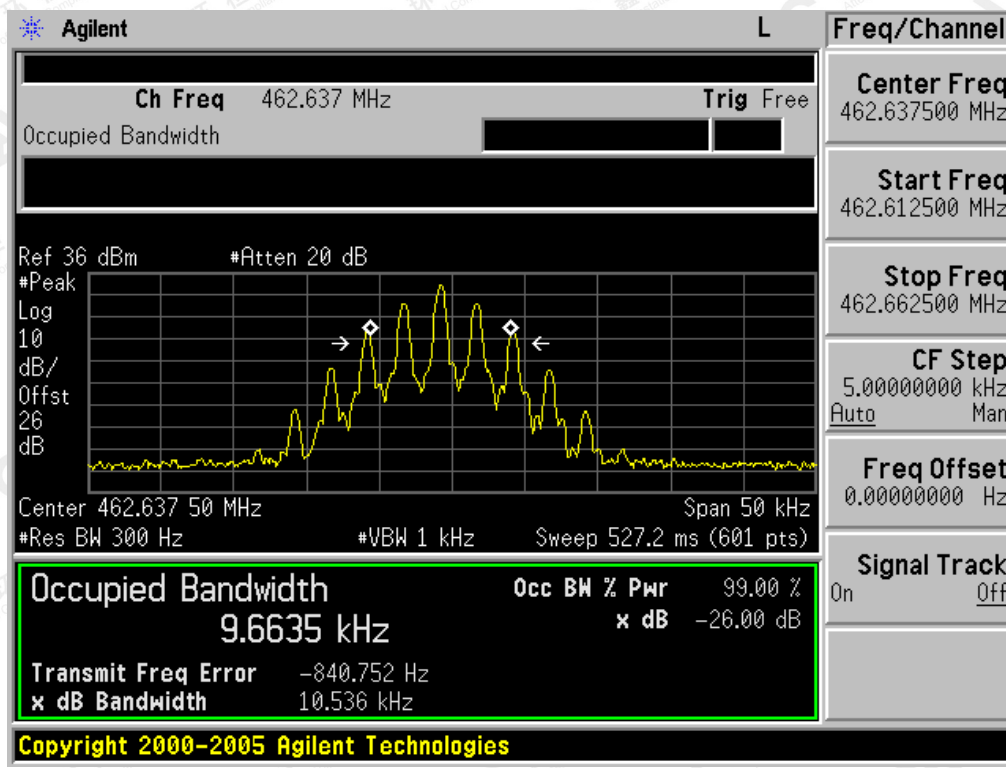


The results shown in this test report refer only to the sample(s) tested unless otherwise stated and the sample(s) are retained for 30 days only. The document is issued by AGC, this document cannot be reproduced except in full with our prior written permission. The more details and the authenticity of the report will be confirmed at <http://www.agc-cert.com>.

**6.4 MEASUREMENT RESULT**

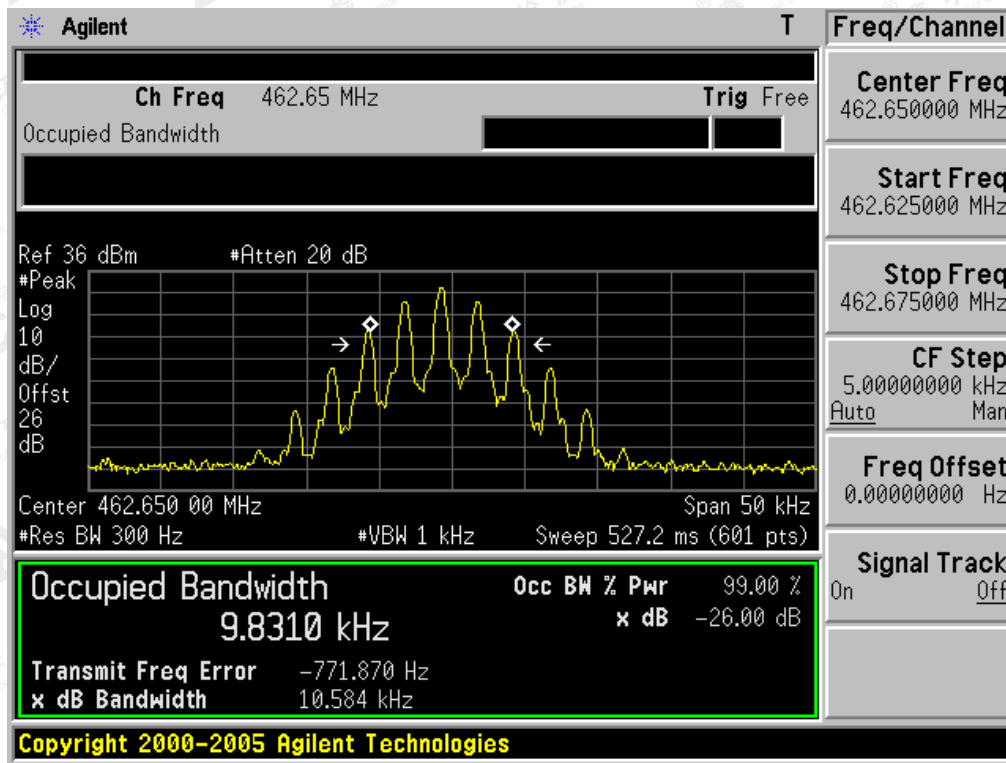
26 dB Bandwidth Measurement Result-2W			
Operating Frequency	12.5 KHz Channel Separation		
	Test Data	Limits	Result
462.6375MHz	10.536 KHz	12.5 KHz	Pass
462.6500MHz	10.584 KHz	12.5 KHz	Pass

**Occupied bandwidth of 462.6375MHz**



The results shown in this test report refer only to the sample(s) tested unless otherwise stated and the sample(s) are retained for 30 days only. The document is issued by AGC, this document cannot be reproduced except in full with our prior written permission. The more details and the authenticity of the report will be confirmed at <http://www.agc-cert.com>.

**Occupied bandwidth of 462.6500MHz**

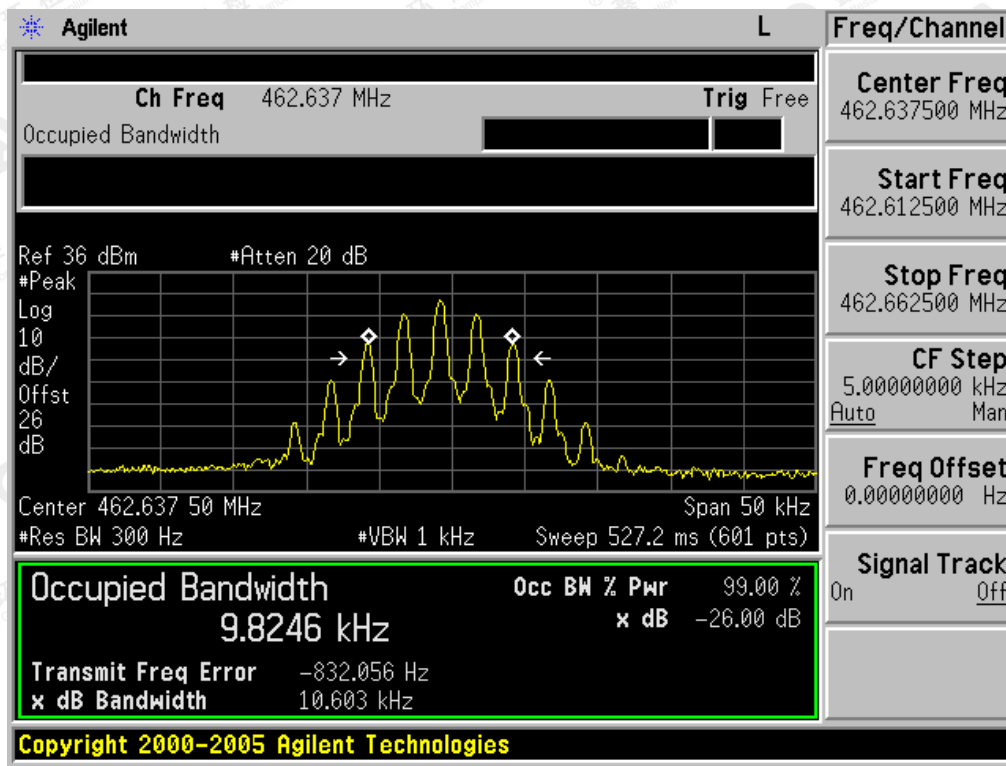


The results shown in this test report refer only to the sample(s) tested unless otherwise stated and the sample(s) are retained for 30 days only. The document is issued by AGC, this document cannot be reproduced except in full with our prior written permission. The more details and the authenticity of the report will be confirmed at <http://www.agc-cert.com>.



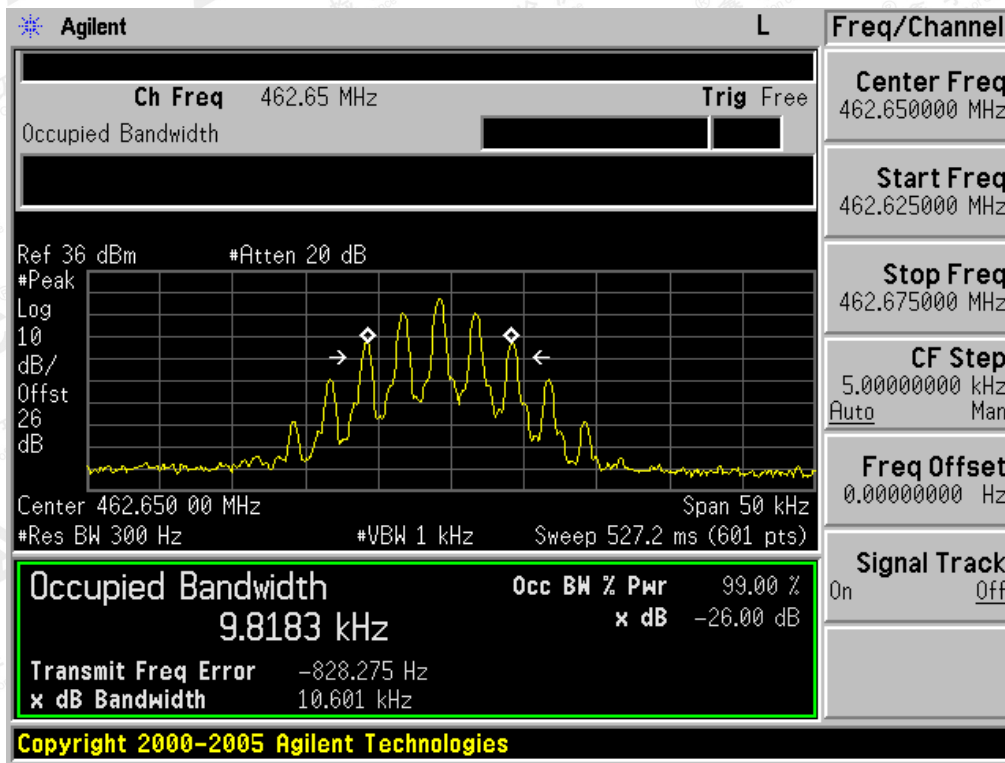
26 dB Bandwidth Measurement Result-0.5W			
Operating Frequency	12.5 KHz Channel Separation		
	Test Data	Limits	Result
462.6375MHz	10.603 KHz	12.5 KHz	Pass
462.6500MHz	10.601 KHz	12.5 KHz	Pass
467.6375MHz	10.611 KHz	12.5 KHz	Pass

**Occupied bandwidth of 462.6375MHz**

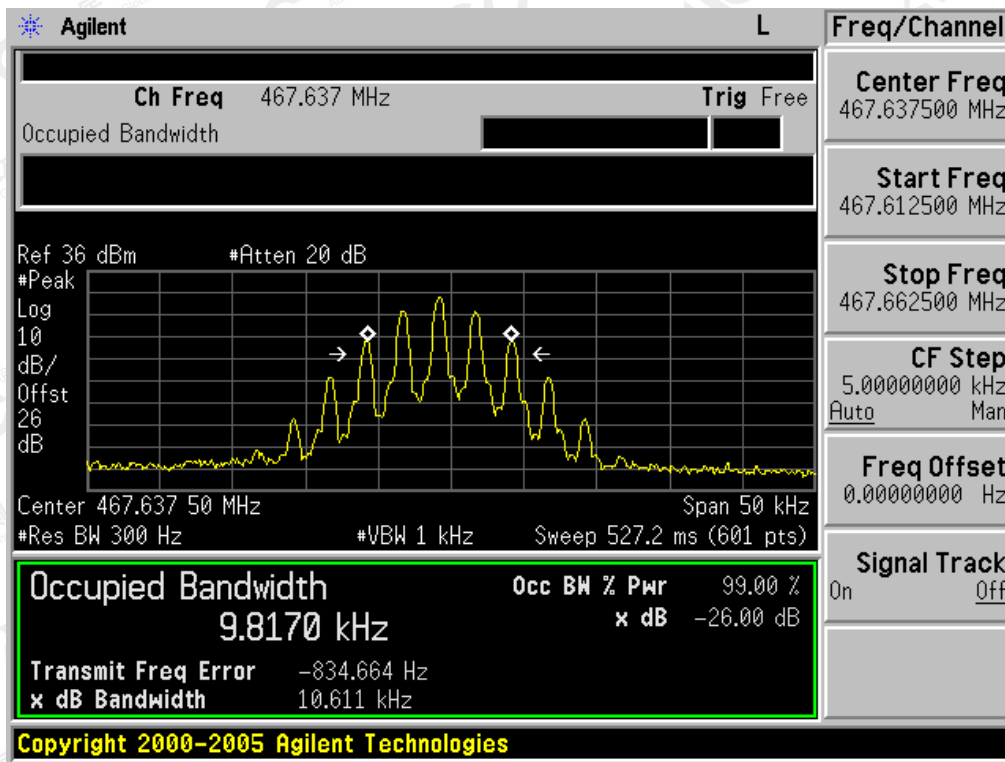


The results shown in this test report refer only to the sample(s) tested unless otherwise stated and the sample(s) are retained for 30 days only. The document is issued by AGC, this document cannot be reproduced except in full with our prior written permission. The more details and the authenticity of the report will be confirmed at <http://www.agc-cert.com>.

**Occupied bandwidth of 462.6500MHz**



**Occupied bandwidth of 467.6375MHz**



The results shown in this test report refer only to the sample(s) tested unless otherwise stated and the sample(s) are retained for 30 days only. The document is issued by AGC, this document cannot be reproduced except in full with our prior written permission. The more details and the authenticity of the report will be confirmed at <http://www.agc-cert.com>.

## 7. UNWANTED RADIATION

### 7.1 PROVISIONS APPLICABLE

Standard Applicable [FCC Part 95.579]

According to FCC section 95.579, the unwanted emission should be attenuated below TP by at least  $43+10 \log(\text{Transmit Power})$  dB.

### 7.2 MEASUREMENT PROCEDURE

- (1) On a test site, the EUT shall be placed on a turntable, and in the position closest to the normal use as declared by the user.
- (2) The test antenna shall be oriented initially for vertical polarization located 3m from the EUT to correspond to the transmitter.
- (3) The output of the antenna shall be connected to the measuring receiver and either a peak or quasi-peak detector was used for the measurement as indicated on the report. The detector selection is based on how close the emission level was approaching the limit.
- (4) The transmitter shall be switched on; if possible, without the modulation and the measurement receiver shall be tuned to the frequency of the transmitter under test.
- (5) The test antenna shall be raised and lowered through the specified range of height until the measuring receiver detects a maximum signal level.
- (6) The transmitter shall then be rotated through 360° in the horizontal plane, until the maximum signal level is detected by the measuring receiver.
- (7) The test antenna shall be raised and lowered again through the specified range of height until the measuring receiver detects a maximum signal level.
  
- (8) The maximum signal level detected by the measuring receiver shall be noted.
- (9) The measurement shall be repeated with the test antenna set to horizontal polarization.
- (10) Replace the antenna with a proper Antenna (substitution antenna).
- (11) The substitution antenna shall be oriented for vertical polarization and, if necessary, the length of the substitution antenna shall be adjusted to correspond to the frequency of transmitting.
- (12) The substitution antenna shall be connected to a calibrated signal generator.
- (13) If necessary, the input attenuator setting of the measuring receiver shall be adjusted in order to increase the sensitivity of the measuring receiver.
- (14) The test antenna shall be raised and lowered through the specified range of the height to ensure that the maximum signal is received.
- (15) The input signal to substitution antenna shall be adjusted to the level that produces a level detected by the measuring receiver, that is equal to the level noted while the transmitter radiated power was measured, corrected for the change of input attenuation setting of the measuring receiver.
- (16) The input level to the substitution antenna shall be recorded as power level in dBm, corrected for any change of input attenuator setting of the measuring receiver.
- (17) The measurement shall be repeated with the test antenna and the substitution antenna oriented for horizontal polarization.

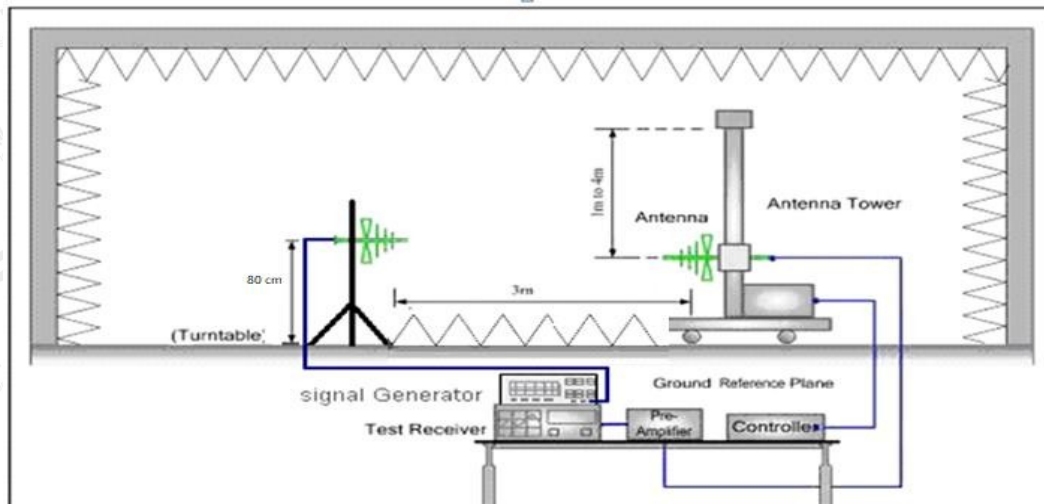
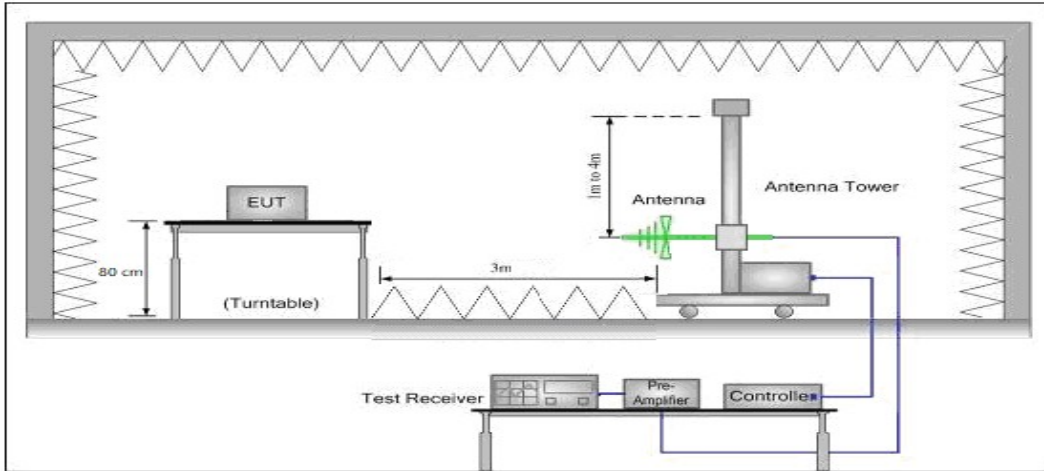
The results shown in this test report refer only to the sample(s) tested unless otherwise stated and the sample(s) are retained for 30 days only. The document is issued by AGC, this document cannot be reproduced except in full with our prior written permission. The more details and the authenticity of the report will be confirmed at <http://www.agc-cert.com>.



### 7.3 TEST SETUP BLOCK DIAGRAM

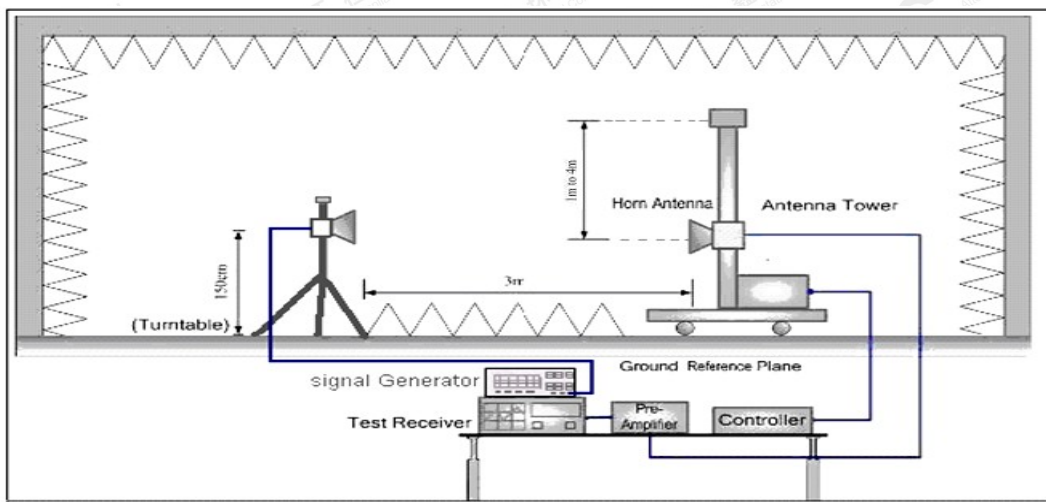
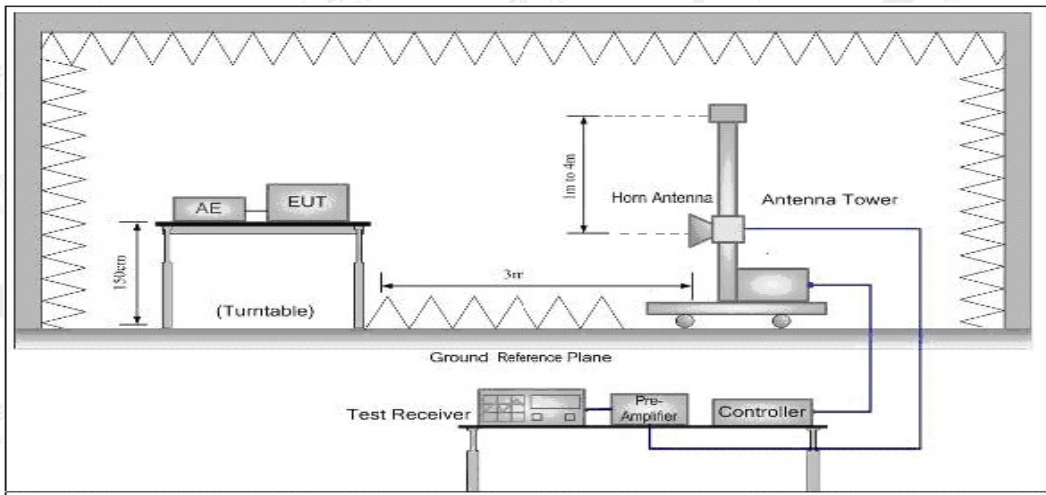
#### SUBSTITUTION METHOD: (Radiated Emissions)

#### Radiated Below 1GHz



The results shown in this test report refer only to the sample(s) tested unless otherwise stated and the sample(s) are retained for 30 days only. The document is issued by AGC, this document cannot be reproduced except in full with our prior written permission. The more details and the authenticity of the report will be confirmed at <http://www.agc-cert.com>.

**Radiated Above 1 GHz**



**7.4 MEASUREMENT RESULTS:**

the unwanted emission should be attenuated below TP by at least  $43+10 \log(\text{Transmit Power})$  dB

**Limit: At least  $43+10 \log(P) = 43+10 \log(2) = 46.01$  (dBc)     $33.01-46.01 = -13$ dBm**

**At least  $43+10 \log(P) = 43+10 \log(0.5) = 40.01$  (dBc)     $26.99-40.01 \approx -13$ dBm**

The results shown in this test report refer only to the sample(s) tested unless otherwise stated and the sample(s) are retained for 30 days only. The document is issued by AGC, this document cannot be reproduced except in full with our prior written permission. The more details and the authenticity of the report will be confirmed at <http://www.agc-cert.com>.



**Measurement Result for 12.5 KHz Channel Separation @ 462.6375MHz-2W**

Emission Frequency (MHz)	Ant. Polarity(H/H)	Measurement Result (dBm)	Limit (dBm)	Result(P/F)
462.638	H	0		pass
925.275	H	-48.3	-13	pass
1387.91	H	-46.2	-13	pass
1850.550	H	-45.8	-13	pass
2313.188	H	-48.7	-13	pass
2775.825	H	-46.5	-13	pass
3238.463	H	-52.3	-13	pass
3701.100	H	-51.5	-13	pass
4163.738	H	-52.1	-13	pass
4626.375	H	-50.4	-13	pass

Emission Frequency (MHz)	Ant. Polarity(H/H)	Measurement Result (dBm)	Limit (dBm)	Result(P/F)
462.638	V	0		pass
925.275	V	-48.1	-13	pass
1387.91	V	-52.3	-13	pass
1850.550	V	-48.8	-13	pass
2313.188	V	-45.1	-13	pass
2775.825	V	-48.3	-13	pass
3238.463	V	-49.1	-13	pass
3701.100	V	-49.2	-13	pass
4163.738	V	-50.3	-13	pass
4626.375	V	-51.8	-13	pass

The results shown in this test report refer only to the sample(s) tested unless otherwise stated and the sample(s) are retained for 30 days only. The document is issued by AGC, this document cannot be reproduced except in full with our prior written permission. The more details and the authenticity of the report will be confirmed at <http://www.agc-cert.com>.



**Measurement Result for 12.5 KHz Channel Separation @ 462.65MHz-2W**

Emission Frequency (MHz)	Ant. Polarity(H/V)	Measurement Result (dBm)	Limit (dBm)	Result(P/F)
462.650	H	0		pass
925.300	H	-48.3	-13	pass
1387.950	H	-45.6	-13	pass
1850.600	H	-47.2	-13	pass
2313.250	H	-42.2	-13	pass
2775.900	H	-41.3	-13	pass
3238.550	H	-45.2	-13	pass
3701.200	H	-44.3	-13	pass
4163.850	H	-50.2	-13	pass
4626.500	H	-51.7	-13	pass

Emission Frequency (MHz)	Ant. Polarity(H/V)	Measurement Result (dBm)	Limit (dBm)	Result(P/F)
462.650	V	0		pass
925.300	V	-49.3	-13	pass
1387.950	V	-46.5	-13	pass
1850.600	V	-47.9	-13	pass
2313.250	V	-45.8	-13	pass
2775.900	V	-43.8	-13	pass
3238.550	V	-49.6	-13	pass
3701.200	V	-45.8	-13	pass
4163.850	V	-53	-13	pass
4626.500	V	-52.1	-13	pass

The results shown in this test report refer only to the sample(s) tested unless otherwise stated and the sample(s) are retained for 30 days only. The document is issued by AGC, this document cannot be reproduced except in full with our prior written permission. The more details and the authenticity of the report will be confirmed at <http://www.agc-cert.com>.

**Measurement Result for 12.5 KHz Channel Separation @ 462.6375MHz-0.5W**

Emission Frequency (MHz)	Ant. Polarity(H/H)	Measurement Result (dBm)	Limit (dBm)	Result(P/F)
462.638	H	0		pass
925.275	H	-49.5	-13	pass
1387.91	H	-45.7	-13	pass
1850.550	H	-48.2	-13	pass
2313.188	H	-46.6	-13	pass
2775.825	H	-47.5	-13	pass
3238.463	H	-48.3	-13	pass
3701.100	H	-49.1	-13	pass
4163.738	H	-54.8	-13	pass
4626.375	H	-53.2	-13	pass

Emission Frequency (MHz)	Ant. Polarity(H/H)	Measurement Result (dBm)	Limit (dBm)	Result(P/F)
462.638	V	0		pass
925.275	V	-42.1	-13	pass
1387.91	V	-43.2	-13	pass
1850.550	V	-45.3	-13	pass
2313.188	V	-47.1	-13	pass
2775.825	V	-46.8	-13	pass
3238.463	V	-48.5	-13	pass
3701.100	V	-47.3	-13	pass
4163.738	V	-52.2	-13	pass
4626.375	V	-50.4	-13	pass

The results shown in this test report refer only to the sample(s) tested unless otherwise stated and the sample(s) are retained for 30 days only. The document is issued by AGC, this document cannot be reproduced except in full with our prior written permission. The more details and the authenticity of the report will be confirmed at <http://www.agc-cert.com>.

**Measurement Result for 12.5 KHz Channel Separation @ 462.65MHz-0.5W**

Emission Frequency (MHz)	Ant. Polarity(H/V)	Measurement Result (dBm)	Limit (dBm)	Result(P/F)
462.650	H	0		pass
925.300	H	-46.7	-13	pass
1387.950	H	-48.3	-13	pass
1850.600	H	-45.2	-13	pass
2313.250	H	-46.8	-13	pass
2775.900	H	-45.2	-13	pass
3238.550	H	-46.8	-13	pass
3701.200	H	-46.7	-13	pass
4163.850	H	-53.9	-13	pass
4626.500	H	-56.4	-13	pass

Emission Frequency (MHz)	Ant. Polarity(H/V)	Measurement Result (dBm)	Limit (dBm)	Result(P/F)
462.650	V	0		pass
925.300	V	-46.5	-13	pass
1387.950	V	-45.3	-13	pass
1850.600	V	-48.1	-13	pass
2313.250	V	-48.8	-13	pass
2775.900	V	-46.2	-13	pass
3238.550	V	-48.3	-13	pass
3701.200	V	-47.2	-13	pass
4163.850	V	-50.2	-13	pass
4626.500	V	-53.4	-13	pass

The results shown in this test report refer only to the sample(s) tested unless otherwise stated and the sample(s) are retained for 30 days only. The document is issued by AGC, this document cannot be reproduced except in full with our prior written permission. The more details and the authenticity of the report will be confirmed at <http://www.agc-cert.com>.



**Measurement Result for 12.5 KHz Channel Separation @ 467.6375MHz-0.5W**

Emission Frequency (MHz)	Ant. Polarity(H/V)	Measurement Result (dBm)	Limit (dBm)	Result(P/F)
467.638	H	0		pass
935.275	H	-46.9	-13	pass
1402.913	H	-48.3	-13	pass
1870.550	H	-47.5	-13	pass
2338.188	H	-48	-13	pass
2805.825	H	-49.3	-13	pass
3273.463	H	-45.9	-13	pass
3741.100	H	-48.4	-13	pass
4208.738	H	-53.1	-13	pass
4676.375	H	-51.4	-13	pass

Emission Frequency (MHz)	Ant. Polarity(H/V)	Measurement Result (dBm)	Limit (dBm)	Result(P/F)
467.638	V	0		pass
935.275	V	-48.6	-13	pass
1402.913	V	-49.4	-13	pass
1870.550	V	-46.8	-13	pass
2338.188	V	-47.9	-13	pass
2805.825	V	-48.1	-13	pass
3273.463	V	-46.8	-13	pass
3741.100	V	-47.2	-13	pass
4208.738	V	-54.1	-13	pass
4676.375	V	-50.7	-13	pass

The results shown in this test report refer only to the sample(s) tested unless otherwise stated and the sample(s) are retained for 30 days only. The document is issued by AGC, this document cannot be reproduced except in full with our prior written permission. The more details and the authenticity of the report will be confirmed at <http://www.agc-cert.com>.

## 7.5 EMISSION MASK PLOT

Standard Applicable [FCC Part 95.579] FRS: Unwanted emissions shall be attenuated below the unmodulated carrier power in accordance with the following:

- (1) At least 25 dB (decibels) on any frequency removed from the center of the authorized bandwidth by more than 50 % up to and including 100% of the authorized bandwidth.
- (2) At least 35 dB on any frequency removed from the center of the authorized bandwidth by more than 100 % up to and including 250 % of the authorized bandwidth.
- (3) At least  $43 + 10 \log_{10}(T)$  dB on any frequency removed from the center of the authorized bandwidth by more than 250 %.

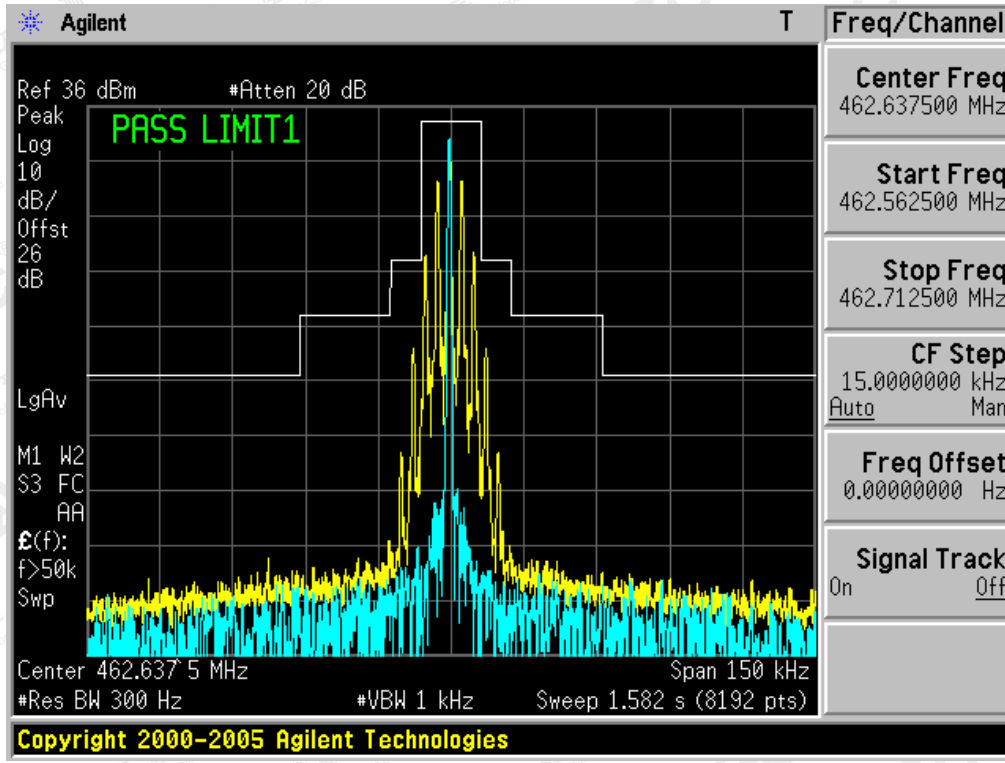
The detailed procedure employed for Emission Mask measurements are specified as following:

- The transmitter shall be modulated by a 2.5 kHz audio signal,
- The level of the audio signal employed is 16 dB greater than that necessary to produce 50% of rated system deviation. Rated system deviation is 2.5 kHz.

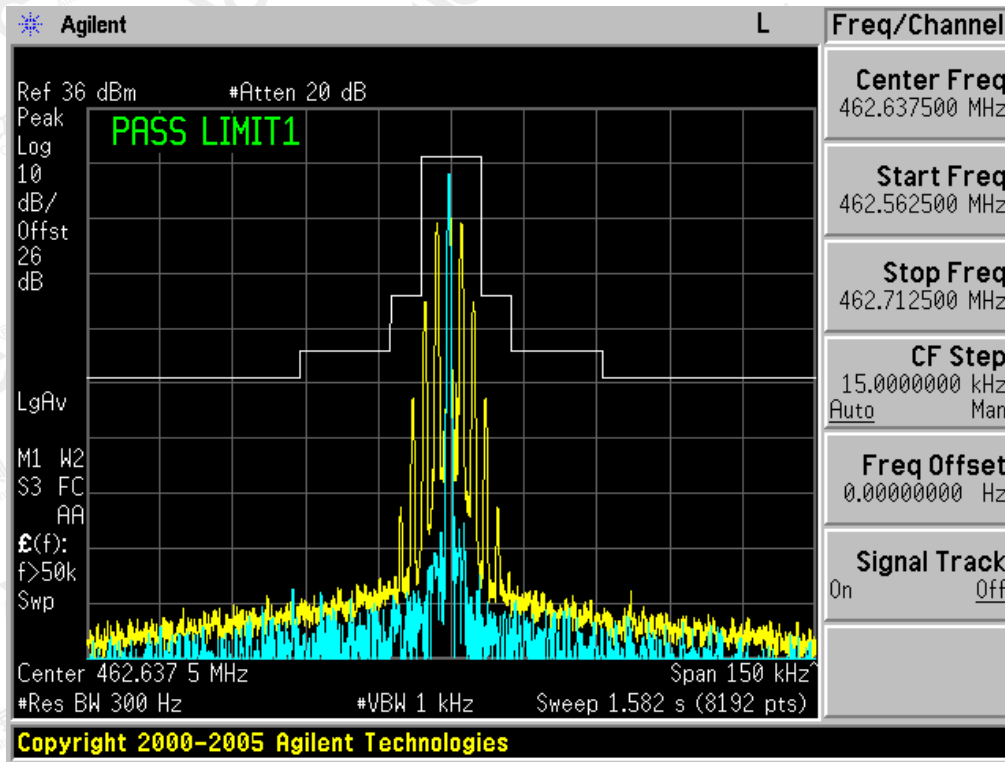
The results shown in this test report refer only to the sample(s) tested unless otherwise stated and the sample(s) are retained for 30 days only. The document is issued by AGC, this document cannot be reproduced except in full with our prior written permission. The more details and the authenticity of the report will be confirmed at <http://www.agc-cert.com>.

Channel 4:

**The Worst Emission Mask for channel 4 -2W**



**The Worst Emission Mask for channel 4 -0.5W**

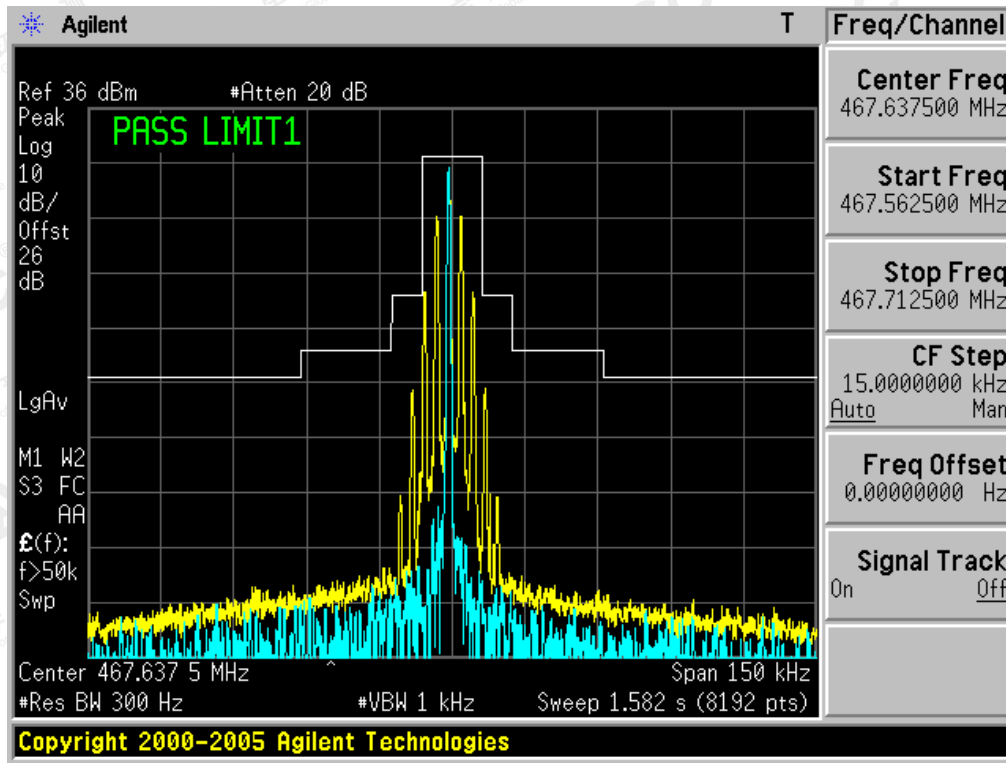


The results shown in this test report refer only to the sample(s) tested unless otherwise stated and the sample(s) are retained for 30 days only. The document is issued by AGC, this document cannot be reproduced except in full with our prior written permission. The more details and the authenticity of the report will be confirmed at <http://www.agc-cert.com>.



CHANNEL 11:

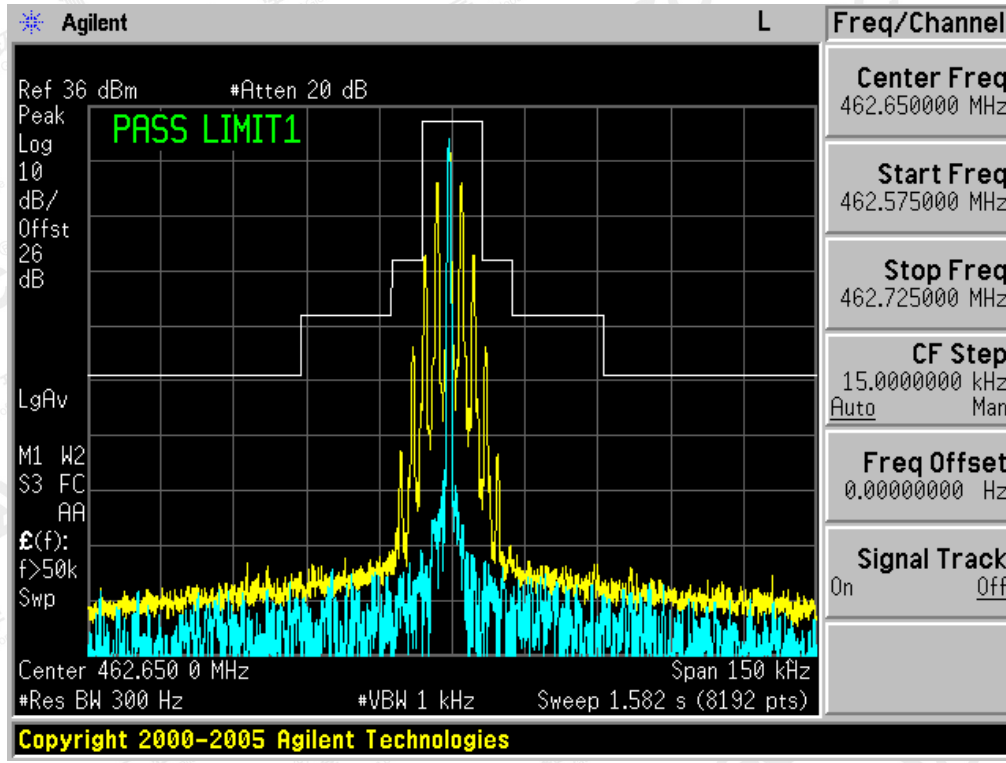
**The Worst Emission Mask for channel 11-0.5W**



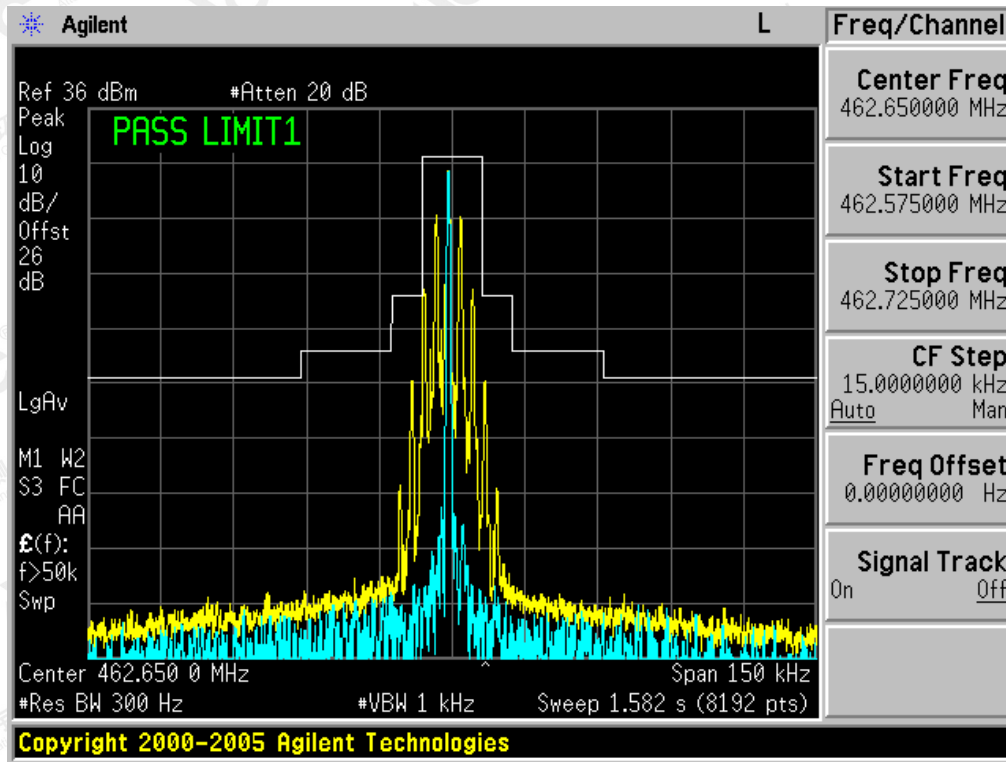
The results shown in this test report refer only to the sample(s) tested unless otherwise stated and the sample(s) are retained for 30 days only. The document is issued by AGC, this document cannot be reproduced except in full with our prior written permission. The more details and the authenticity of the report will be confirmed at <http://www.agc-cert.com>.

CHANNEL 19:

**The Worst Emission Mask for channel 19-2W**



**The Worst Emission Mask for channel 19-0.5W**



The results shown in this test report refer only to the sample(s) tested unless otherwise stated and the sample(s) are retained for 30 days only. The document is issued by AGC, this document cannot be reproduced except in full with our prior written permission. The more details and the authenticity of the report will be confirmed at <http://www.agc-cert.com>.

## 8. MAXIMUM TRANSMITTER POWER

### 8.1 PROVISIONS APPLICABLE

Per FCC §2.1046 and §95.567(h): Maximum ERP is dependent upon the station's antenna HAAT and required service area.

FCC Part 95.567 For FRS

Each FRS transmitter type must be designed such that the effective radiated power (ERP) on channels 8 through 14 does not exceed 0.5 Watts and the ERP on channels 1 through 7 and 15 through 22 does not exceed 2.0 Watts.

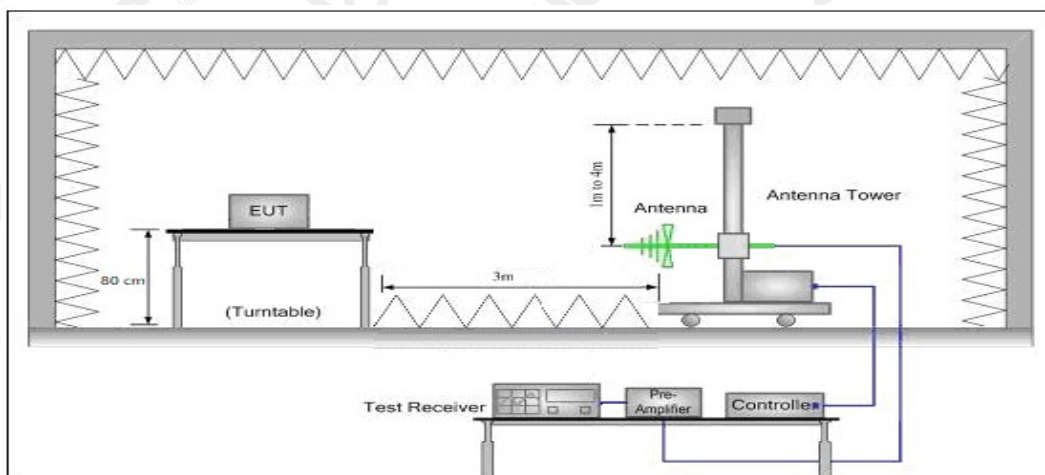
### 8.2 TEST PROCEDURE

- (1) The spectrum setting for Equivalent Isotropically Radiated Power (EIRP) is RBW = 100 kHz, VBW = 300 kHz. Detector Mode is RMS.
- (2) In the semi-anechoic chamber, setup as illustrated above the EUT placed on the 1.5m height of Turn Table, rotated the table 45 degree each interval to search the maximum radiation power and receiver antenna shall be rotated vertical and horizontal polarization and moved height from 1m to 4m to find the maximum polar radiated power for each degree interval. The "Read Value" is the spectrum reading of maximum power value.
- (3) The substitution antenna is substituted for EUT at the same position and signals generator (S.G) export the CW signal to the substitution antenna via a TX cable. The receiver antenna shall be rotated vertical and horizontal polarization and moved height from 1m to 4m to find the maximum radiation power. Record the power level of maximum radiation power from spectrum. So, the Measured substitution value = Ref level of S.G + TX cables loss – Substituted Antenna Gain

### 8.3 TEST CONFIGURATION

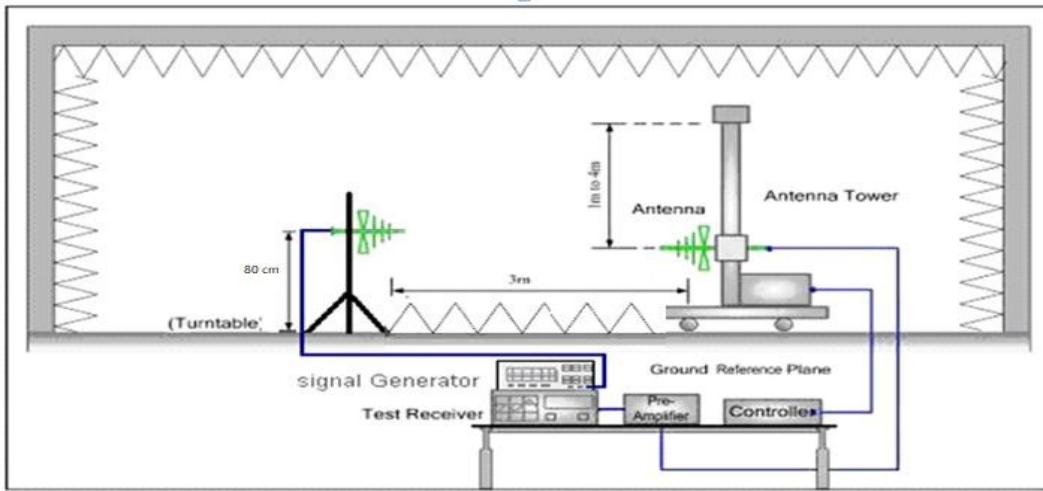
#### Effective Radiated Power

#### Radiated Below 1GHz

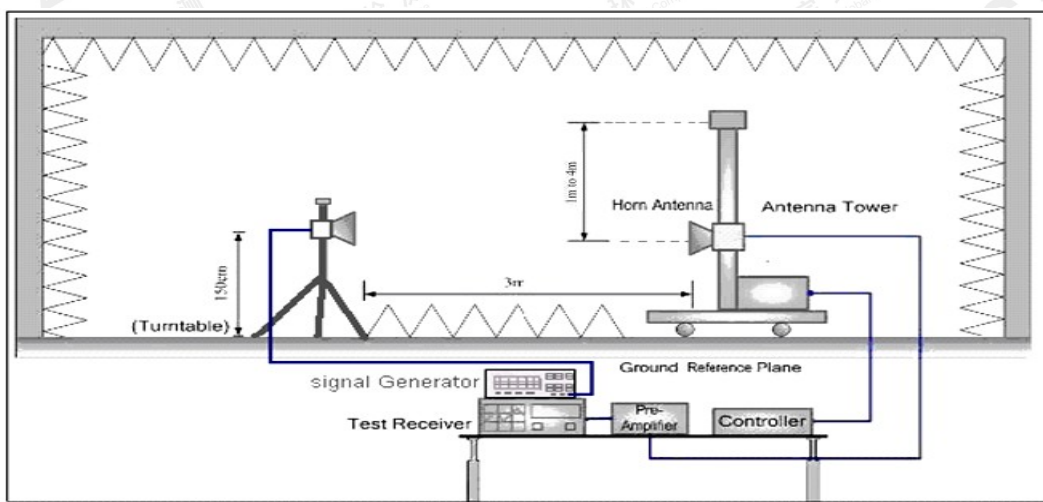
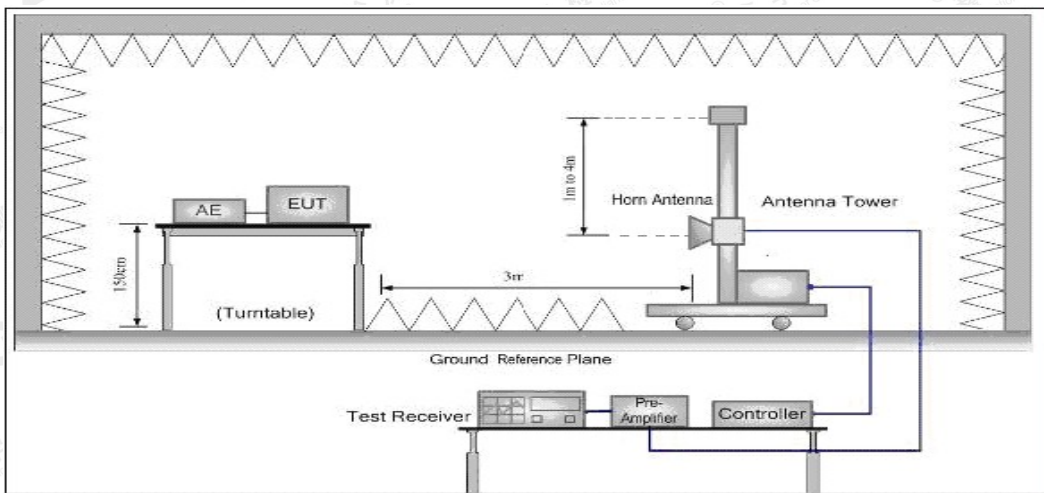


The results shown in this test report refer only to the sample(s) tested unless otherwise stated and the sample(s) are retained for 30 days only. The document is issued by AGC, this document cannot be reproduced except in full with our prior written permission. The more details and the authenticity of the report will be confirmed at <http://www.agc-cert.com>.





**Radiated Above 1 GHz**



The results shown in this test report refer only to the sample(s) tested unless otherwise stated and the sample(s) are retained for 30 days only. The document is issued by AGC, this document cannot be reproduced except in full with our prior written permission. The more details and the authenticity of the report will be confirmed at <http://www.agc-cert.com>.

### 8.4 TEST RESULT

The maximum Power (CP) for UHF is  
 Analog: 2W/0.5W for 12.5 KHz Channel Separation

Calculation Formula:  $CP = R + A + L$

\* Note:

- CP: The final Conducted Power
- R : The reading value from spectrum analyzer
- A : The attenuation value of the used attenuator
- L : The loss of all connection cables

### ERP RESULT:

Frequency	Reading Level	Antenna	S.G.	Cable Loss	Ant.Gain	Emission Level	Limit	Margin
(MHz)	(dBuv/m)	Polarization	(dBm)	(dB)	(dBi)	(dBm)	(dBm)	(dB)
<b>Frequency: 462.6375MHz</b>								
462.6375	123.17	V	25.79	0.38	6.60	32.01	33.01	1.00
462.6375	122.61	H	25.23	0.38	6.60	31.45	33.01	1.56
<b>Frequency: 462.6500MHz</b>								
462.6500	123.04	V	25.66	0.38	6.60	31.88	33.01	1.13
462.6500	122.13	H	24.75	0.38	6.60	30.97	33.01	2.04

Frequency	Reading Level	Antenna	S.G.	Cable Loss	Ant.Gain	Emission Level	Limit	Margin
(MHz)	(dBuv/m)	Polarization	(dBm)	(dB)	(dBi)	(dBm)	(dBm)	(dB)
<b>Frequency: 462.6375MHz</b>								
462.6375	116.83	V	19.45	0.38	6.60	25.67	33.01	7.34
462.6375	116.39	H	19.01	0.38	6.60	25.23	33.01	7.78
<b>Frequency: 462.6500MHz</b>								
462.6500	116.68	V	19.30	0.38	6.60	25.52	33.01	7.49
462.6500	116.35	H	18.97	0.38	6.60	25.19	33.01	7.82
<b>Frequency: 467.6375MHz</b>								
467.6375	116.72	V	19.34	0.38	6.60	25.56	26.99	1.43
467.6375	116.14	H	18.76	0.38	6.60	24.98	26.99	2.01

The results shown in this test report refer only to the sample(s) tested unless otherwise stated and the sample(s) are retained for 30 days only. The document is issued by AGC, this document cannot be reproduced except in full with our prior written permission. The more details and the authenticity of the report will be confirmed at <http://www.agc-cert.com>.



## 9. MODULATION CHARACTERISTICS

### 9.1 PROVISIONS APPLICABLE

According to [FCC Part 95.575, Part 2.1047(a)], for Voice Modulation Communication Equipment, the frequency response of the audio modulation circuit over a range of 100 to 5000Hz shall be measured.

Part 95.575 A FRS unit that transmits emission type F3E must not exceed a peak frequency deviation of plus or minus 2.5 kHz, and the audio frequency response must not exceed 3.125 kHz.

Part 2.1047(a) A curve or equivalent data showing the frequency response of the audio modulating circuit over a range of 100 to 5000 Hz shall be submitted. For equipment required to have an audio low-pass filter, a curve showing the frequency response of the filter, or of all circuitry installed between the modulation limiter and the modulated stage shall be submitted.

### 9.2 MEASUREMENT METHOD

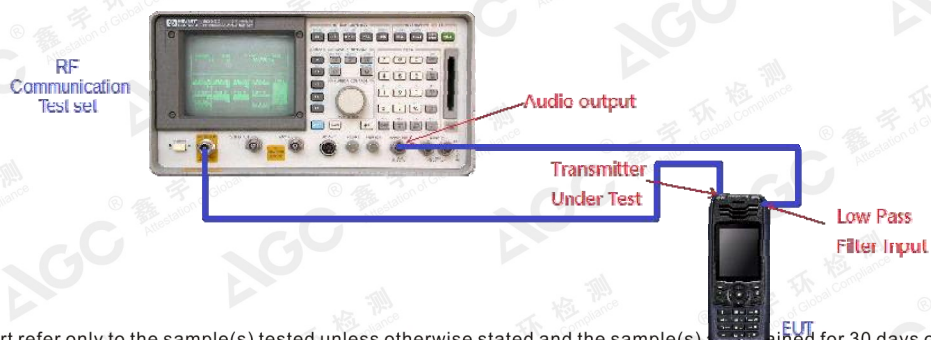
#### 9.2.1 Modulation Limit

- (1). Configure the EUT as shown in figure 1, adjust the audio input for 60% of rated system deviation at 1KHz using this level as a reference (0dB) and vary the input level from -20 to +20dB. Record the frequency deviation obtained as a function of the input level.
- (2). Repeat step 1 with input frequency changing to 300, 1000, 1500 and 3000Hz in sequence.

#### 9.2.2 Audio Frequency Response

Personal Radio Service stations that transmit voice emissions may also transmit audible or subaudible tones or other signals for the purpose of selective calling and/or receiver squelch activation. These tones and signals are ancillary to voice communications and are considered to be included within the voice emission types, e.g., A3E, F3E, and G3E.

- (a) Tones that are audible (having a frequency higher than 300 Hertz), must last no longer than 15 seconds at one time.
  - (b) Tones that are subaudible (having a frequency of 300 Hertz or less), may be transmitted continuously during a communication session.
- (1). Configure the EUT as shown in figure 1.
  - (2). Adjust the audio input for 20% of rated system deviation at 1 KHz using this level as a reference (0 dB).
  - (3). Vary the Audio frequency from 100 Hz to 10 KHz and record the frequency deviation.
  - (4). Audio Frequency Response =  $20\log_{10}(\text{Deviation of test frequency}/\text{Deviation of 1 KHz reference})$ .



The results shown in this test report refer only to the sample(s) tested unless otherwise stated and the sample(s) is/are valid for 30 days only. The document is issued by AGC, this document cannot be reproduced except in full with our prior written permission. The more details and the authenticity of the report will be confirmed at <http://www.agc-cert.com>.



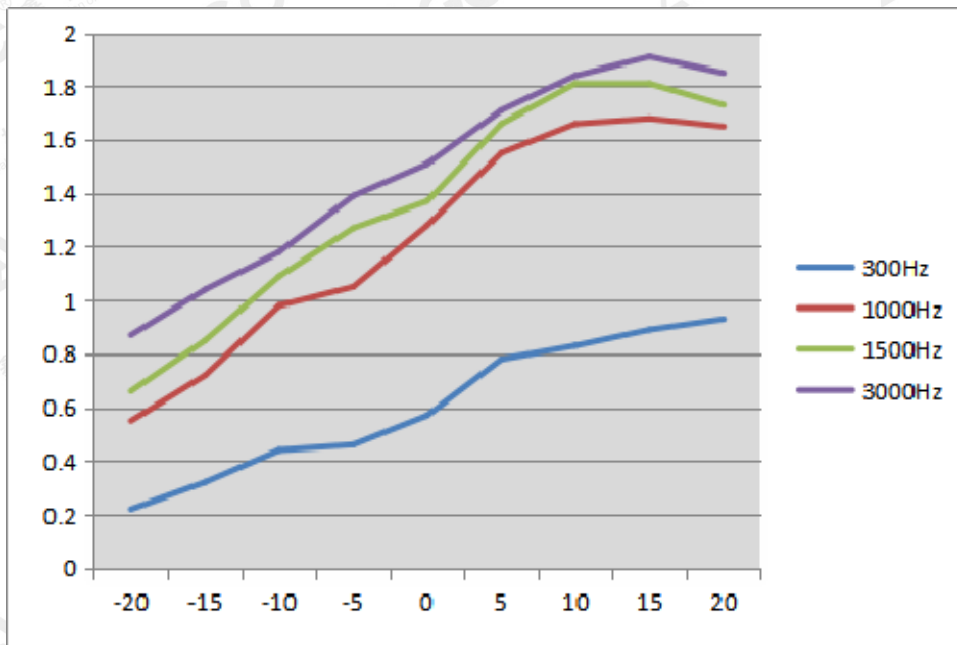
**9.3 MEASUREMENT RESULT**

**TEST CHANNEL: 4**

**(A). MODULATION LIMIT:**

**462.6375MHz @ 12.5 KHz Channel Separations-2W**

Modulation Level (dB)	Peak Freq. Deviation At 300 Hz	Peak Freq. Deviation At 1000 Hz	Peak Freq. Deviation At 1500 Hz	Peak Freq. Deviation At 3000 Hz
-20	0.22	0.55	0.66	0.87
-15	0.32	0.72	0.85	1.04
-10	0.44	0.98	1.09	1.18
-5	0.46	1.05	1.27	1.39
0	0.57	1.28	1.37	1.51
+5	0.78	1.55	1.66	1.71
+10	0.83	1.66	1.81	1.84
+15	0.89	1.68	1.81	1.91
+20	0.93	1.65	1.73	1.85



Note: All the modes had been tested, but only the worst data recorded in the report.

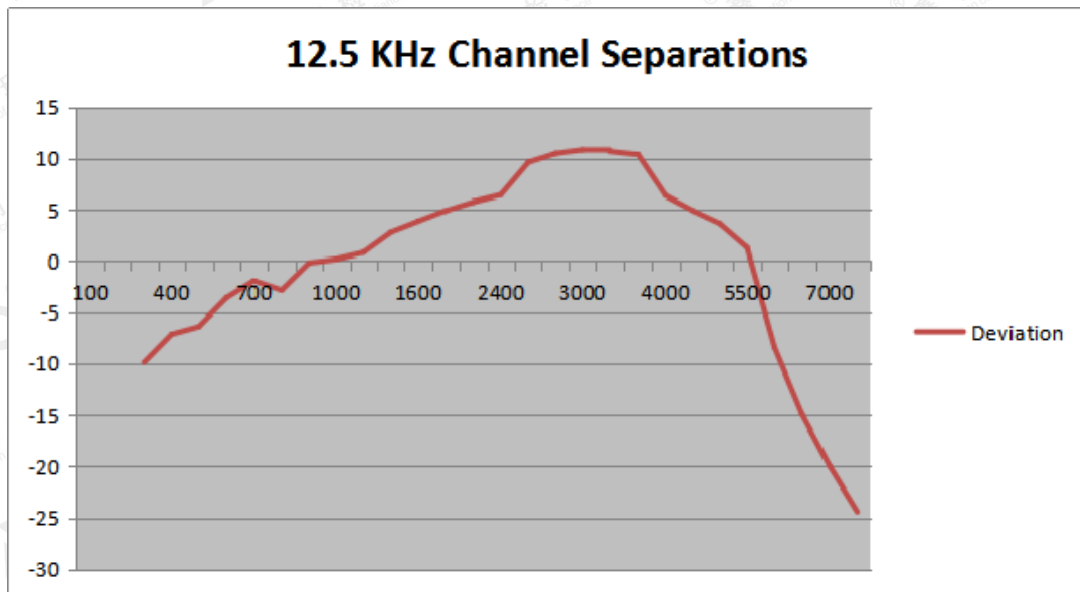
The results shown in this test report refer only to the sample(s) tested unless otherwise stated and the sample(s) are retained for 30 days only. The document is issued by AGC, this document cannot be reproduced except in full with our prior written permission. The more details and the authenticity of the report will be confirmed at <http://www.agc-cert.com>.

**(B). AUDIO FREQUENCY RESPONSE:**
**462.6375MHz @ 12.5 KHz Channel Separations-2W**

Frequency (Hz)	Deviation (KHz)	Audio Frequency Response(dB)
100	--	--
200	--	--
300	0.16	-14.89
400	0.22	-12.40
500	0.24	-8.40
600	0.33	-7.54
700	0.4	-6.02
800	0.36	-3.61
900	0.49	-1.72
1000	0.51	-0.35
1200	0.55	0.34
1400	0.69	2.01
1600	0.78	3.29
1800	0.88	4.40
2000	0.97	5.58
2400	1.05	7.89
2500	1.52	9.43
2800	1.68	10.42
3000	1.75	10.83
3200	1.72	10.73
3600	1.66	9.43
4000	1.04	5.30
4500	0.88	4.19
5000	0.76	2.14
5500	0.58	-2.38
6000	0.19	-9.90
6500	0.09	-21.94
7000	0.05	-27.96
7500	0.03	-14.89
9000	--	--
10000	--	--
14000	--	--
18000	--	--
20000	--	--
30000	--	--

The results shown in this test report refer only to the sample(s) tested unless otherwise stated and the sample(s) are retained for 30 days only. The document is issued by AGC, this document cannot be reproduced except in full with our prior written permission. The more details and the authenticity of the report will be confirmed at <http://www.agc-cert.com>.

**Frequency Response Result**

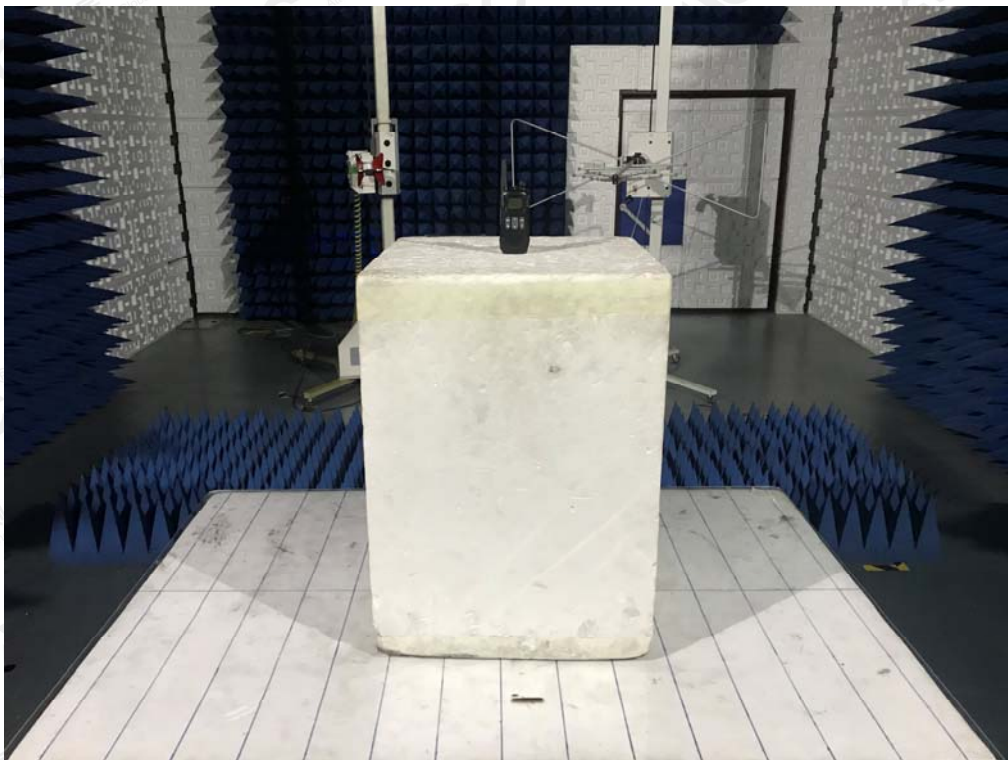
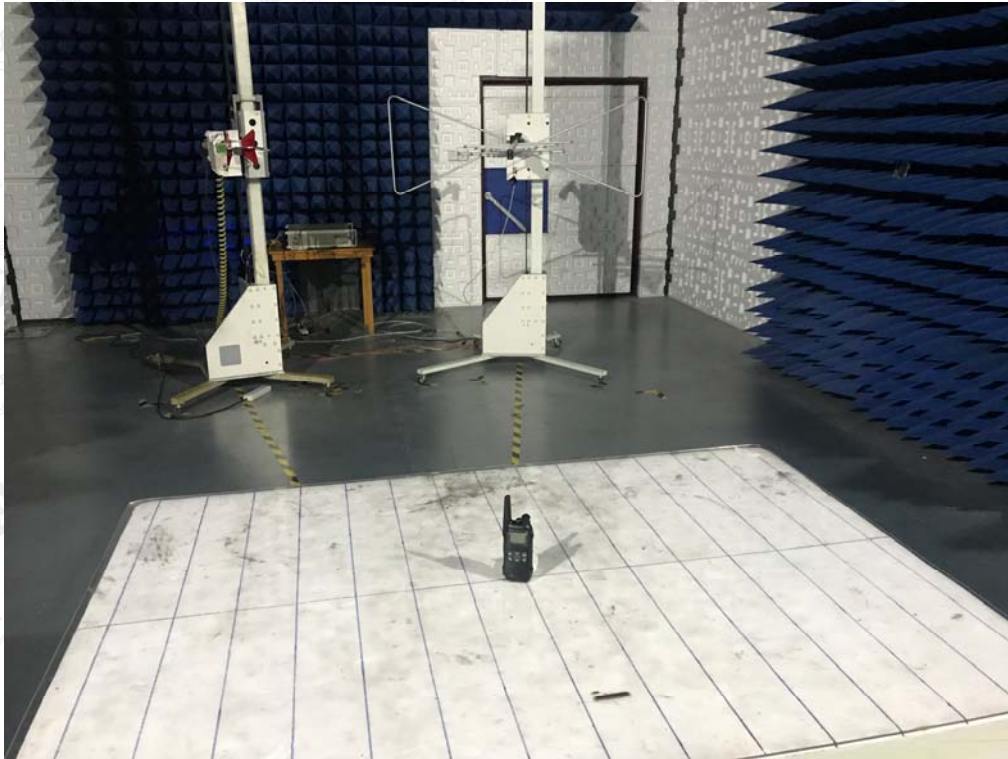


Note: All the modes had been tested, but only the worst data recorded in the report.

The results shown in this test report refer only to the sample(s) tested unless otherwise stated and the sample(s) are retained for 30 days only. The document is issued by AGC, this document cannot be reproduced except in full with our prior written permission. The more details and the authenticity of the report will be confirmed at <http://www.agc-cert.com>.



**APPENDIX I: PHOTOGRAPHS OF SETUP**  
**RADIATED EMISSION TEST SETUP**



The results shown in this test report refer only to the sample(s) tested unless otherwise stated and the sample(s) are retained for 30 days only. The document is issued by AGC, this document cannot be reproduced except in full with our prior written permission. The more details and the authenticity of the report will be confirmed at <http://www.agc-cert.com>.



**APPENDIX II: EXTERNAL VIEW OF EUT**  
TOTAL VIEW OF EUT



TOP VIEW OF EUT



The results shown in this test report refer only to the sample(s) tested unless otherwise stated and the sample(s) are retained for 30 days only. The document is issued by AGC, this document cannot be reproduced except in full with our prior written permission. The more details and the authenticity of the report will be confirmed at <http://www.agc-cert.com>.



BOTTOM VIEW OF EUT



FRONT VIEW OF EUT



The results shown in this test report refer only to the sample(s) tested unless otherwise stated and the sample(s) are retained for 30 days only. The document is issued by AGC, this document cannot be reproduced except in full with our prior written permission. The more details and the authenticity of the report will be confirmed at <http://www.agc-cert.com>.



BACK VIEW OF EUT



LEFT VIEW OF EUT



The results shown in this test report refer only to the sample(s) tested unless otherwise stated and the sample(s) are retained for 30 days only. The document is issued by AGC, this document cannot be reproduced except in full with our prior written permission. The more details and the authenticity of the report will be confirmed at <http://www.agc-cert.com>.



RIGHT VIEW OF EUT



OPEN VIEW-1 OF EUT



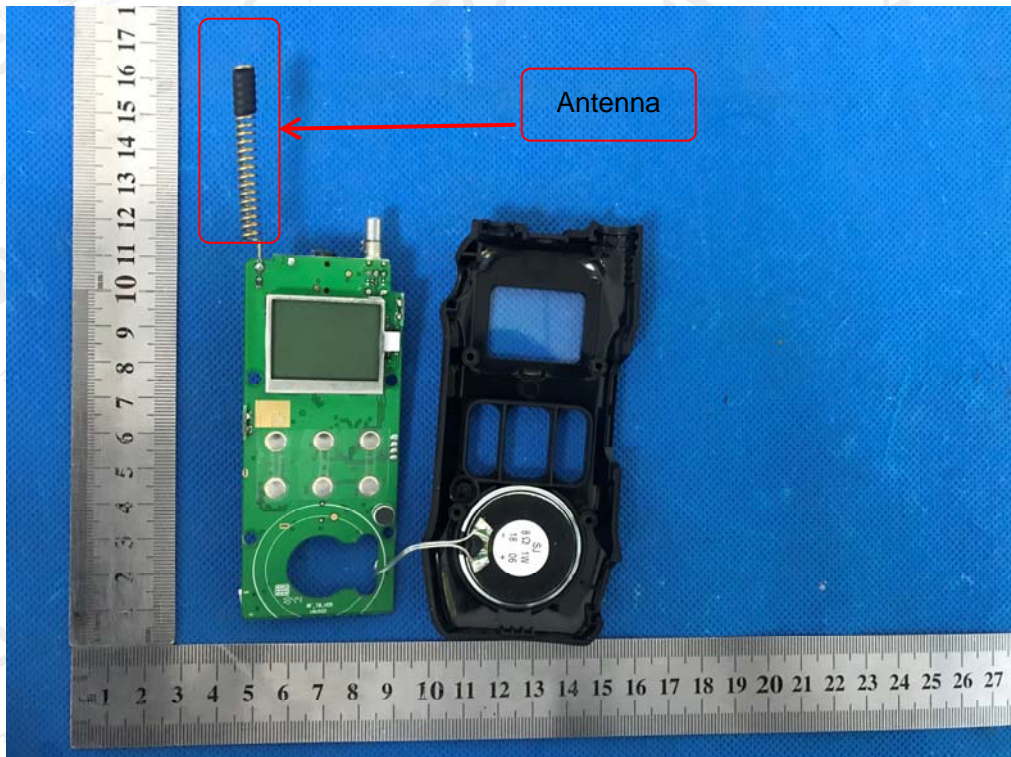
The results shown in this test report refer only to the sample(s) tested unless otherwise stated and the sample(s) are retained for 30 days only. The document is issued by AGC, this document cannot be reproduced except in full with our prior written permission. The more details and the authenticity of the report will be confirmed at <http://www.agc-cert.com>.



OPEN VIEW-2 OF EUT



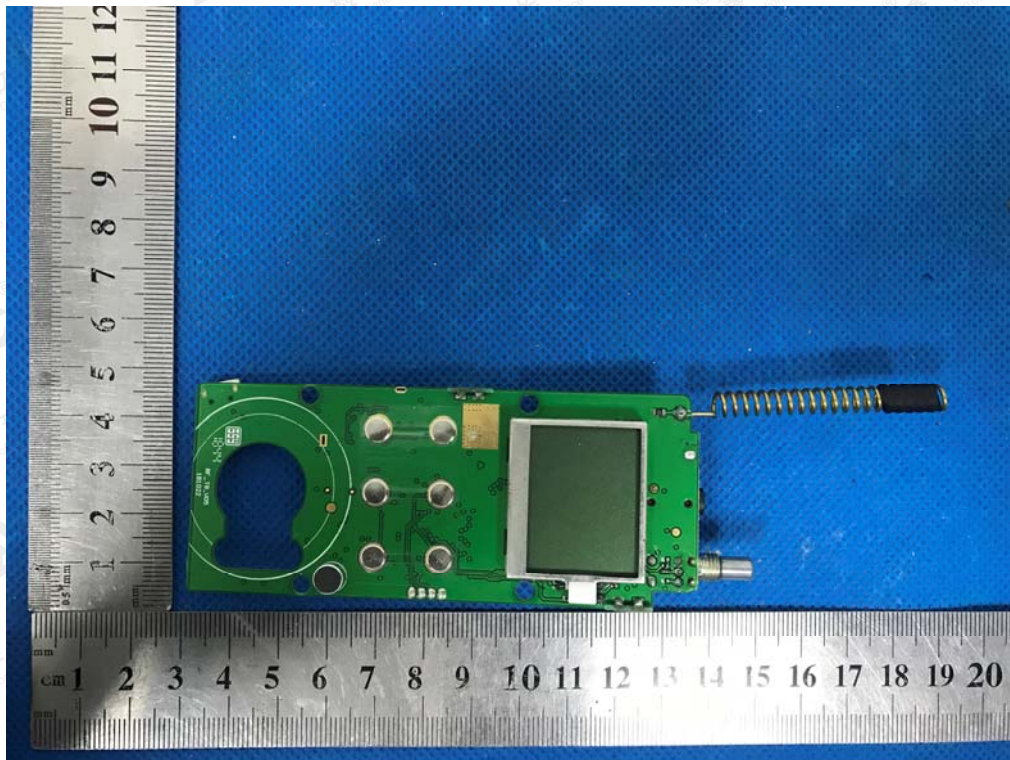
OPEN VIEW-3 OF EUT



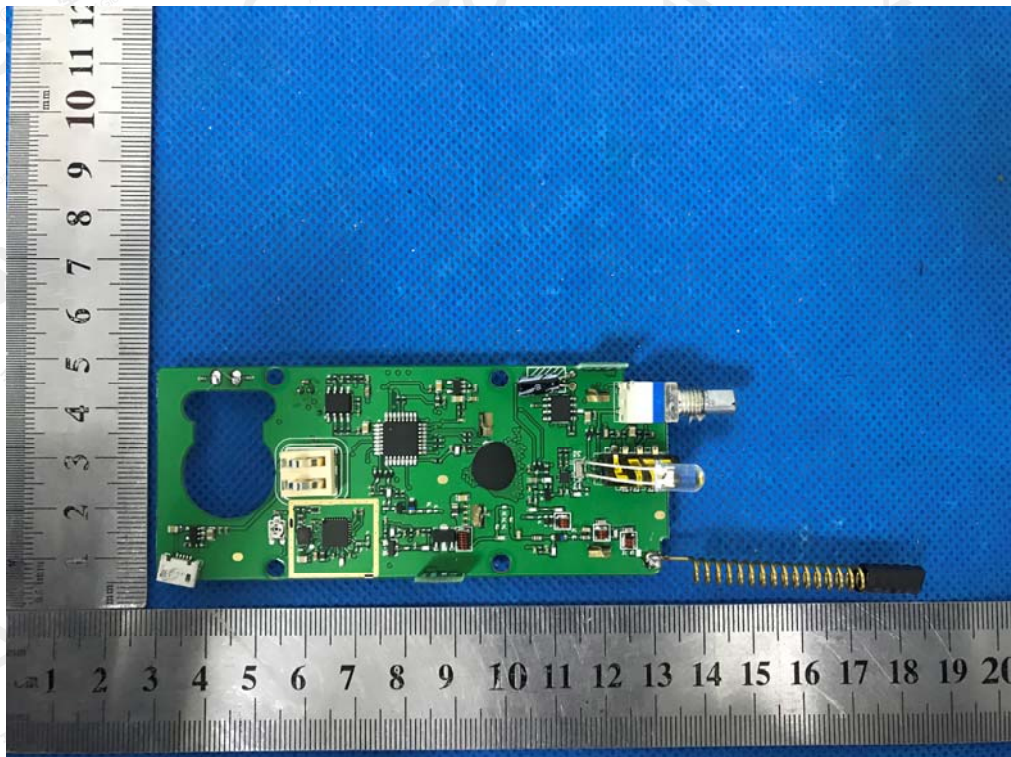
The results shown in this test report refer only to the sample(s) tested unless otherwise stated and the sample(s) are retained for 30 days only. The document is issued by AGC, this document cannot be reproduced except in full with our prior written permission. The more details and the authenticity of the report will be confirmed at <http://www.agc-cert.com>.



INTERNAL VIEW-1 OF EUT



INTERNAL VIEW-2 OF EUT



The results shown in this test report refer only to the sample(s) tested unless otherwise stated and the sample(s) are retained for 30 days only. The document is issued by AGC, this document cannot be reproduced except in full with our prior written permission. The more details and the authenticity of the report will be confirmed at <http://www.agc-cert.com>.



INTERNAL VIEW-3 OF EUT



----END OF REPORT----

The results shown in this test report refer only to the sample(s) tested unless otherwise stated and the sample(s) are retained for 30 days only. The document is issued by AGC, this document cannot be reproduced except in full with our prior written permission. The more details and the authenticity of the report will be confirmed at <http://www.agc-cert.com>.