



# Smoovebox user guide

Cédric LANDAIS, Pietro DE PONTE

SMOOVE

12/12/2016

# Table des matières

Preamble .....

Glossary.....

Warnings.....

Departure.....

Break out of station.....

Return.....

Installation and maintenance.....

Compliance.....

3

3

3

4

4

5

6

6

1 PREAMBLE

Aim of this document is to describe the Smoovebox user guide.

2 GLOSSARY

Keyword	Description

3 WARNINGS

*This portable equipment with it’s antenna complies with FCC’s radiation exposure limits set forth for an uncontrolled environment. To maintain compliance, follow the instructions below :*

1.

*This transmitter must not be co-located or operating in conjunction with any other antenna or transmitter.*
2.

*Avoid direct contact to the antenna, or keep contact to a minimum while using this equipment.*

## 4 DEPARTURE



1. I wake up the Smoovebox by pressing V button (enter)

2. If I have an RFID card

- I choose the option "1"
- I swap my card
- I enter my Pin code, (MMDD, my PIN code matches my account password),
- and I press enter
- At the BEEP I remove my bike and go for a ride!

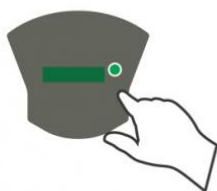
3. If I have a code:

- I choose the option "2"
- I enter my access code (4 digits) and I press enter
- I enter my PIN code (MMJJ, my PIN code matches my account password),
- and I press enter
- At the BEEP I remove my bike and go for a ride!

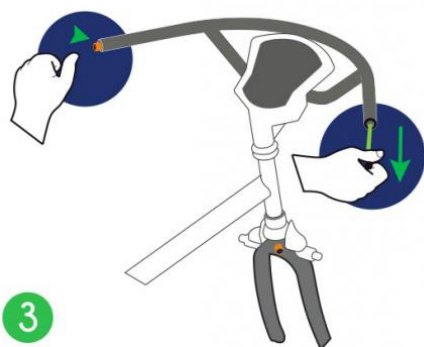
## 5 BREAK OUT OF STATION

When away from station, use integrated cable lock for short stops.

1 Press Enter



2 Follow the instructions

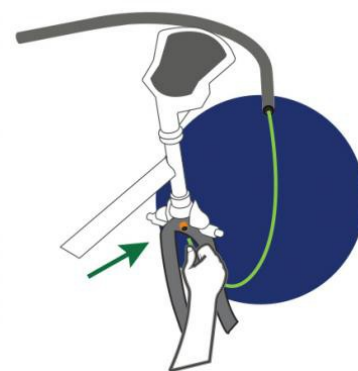


3

Pull the cable

4

Insert the cable and secure the bike

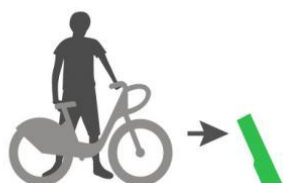


Take back the bike after my break:

- I wake up the Smoovebox
- I enter my PIN code, I press enter
- I release and pull back the cable, then I can go!

## 6 RETURN

Insert bike into docking station, wait for beep and go



1 Insert the bike into any dock



2 1 x **Bip** = Return OK  
3 x **Bip** = KO lock error

## 7 INSTALLATION AND MAINTENANCE

1. This device must be professionally installed
2. Changes or modifications not expressly approved by the party responsible for compliance could void the user's authority to operate the equipment.

## 8 COMPLIANCE

*This equipment has been tested and found to comply with the limits for a Class B digital device, pursuant to part 15 of the FCC Rules. These limits are designed to provide reasonable protection against harmful interference in a residential installation. This equipment generates, uses and can radiate radio frequency energy and, if not installed and used in accordance with the instructions, may cause harmful interference to radio communications. However, there is no guarantee that interference will not occur in a particular installation. If this equipment does cause harmful interference to radio or television reception, which can be determined by turning the equipment off and on, the user is encouraged to try to correct the interference by one or more of the following measures:*

- Reorient or relocate the receiving antenna.
- Increase the separation between the equipment and receiver.
- Connect the equipment into an outlet on a circuit different from that to which the receiver is connected.
- Consult the dealer or an experienced radio/TV technician for help