

WIRELESS SOLAR DRIVEWAY ALARM

INSTRUCTION MANUAL

MODEL:MC-004



eMACROS was founded in 2012, the brainchild of a group of friends who previously designed Motorola products. Fast forward a few years and we are now the industry leader in home intercom and security products.

Our vision is to create a global world leader in home intercom solutions and products. We design and engineer intelligent residential home solution and intercom systems. Our company philosophy is to direct our efforts based on our client's wishes.

We want you to have the best possible experience with our products. We also offer superior customer service to address damaged or defective products.

If you have any questions, please contact us at:

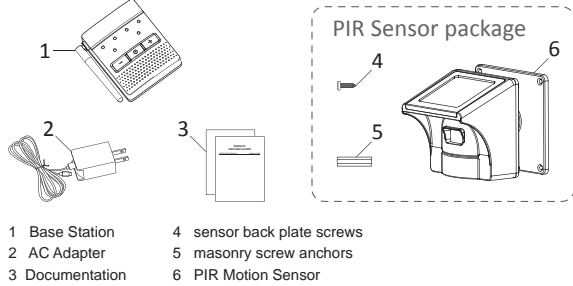
✉ Macross.service@outlook.com, we will assist you as quickly as possible.

🌐 www.emacros.com

Overview

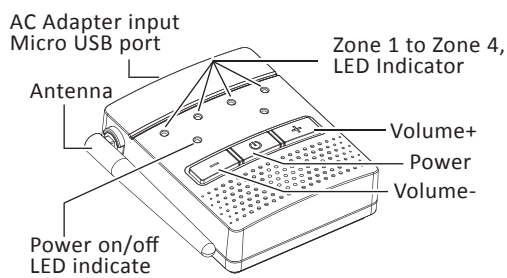
The Wireless Motion Alert has a range of up to 1/2 mile (800 meters). It uses a Passive Infrared (PIR) Motion Sensor to detect movement of people and vehicles while allowing small animals to pass through undetected. The Base Station is powered by an AC adapter, it can also run on 4AA batteries as backup in case of power outage for 2 weeks.

What's in the box



Operation & Features

1.Base Station



On/Off

To turn the Base Station on or off, hold down the Power button until you hear the on/off tone. The red power light will illuminate on #3 when the Base Station is on.

Volume

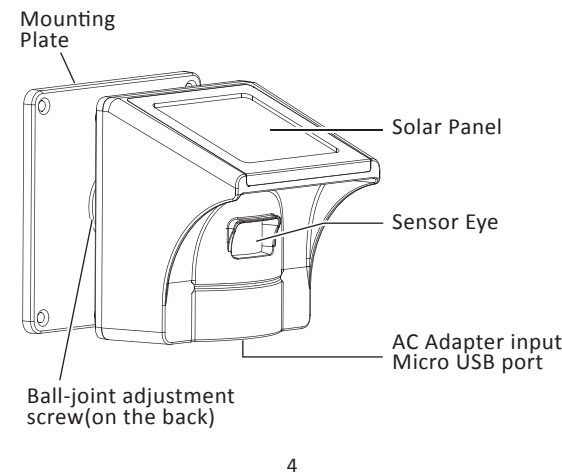
The Base Station is equipped with adjustable Volume +/- controls. The lowest volume setting mutes the volume. Volume adjustments will be heard on subsequent alarm activations, not

while adjustments are being made. Powering off the base station will reset the volume to the factory setting.

Zone/Line 1 to Zone/Line 4 LED Indicators

When motion is detected the corresponding Zone LED indicator will flash.

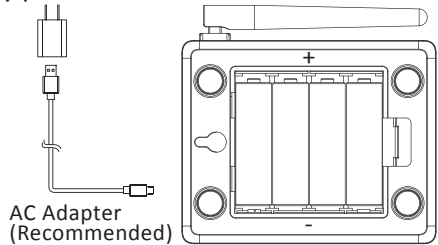
2.Passive Infra-Red(PIR) Motion Sensor



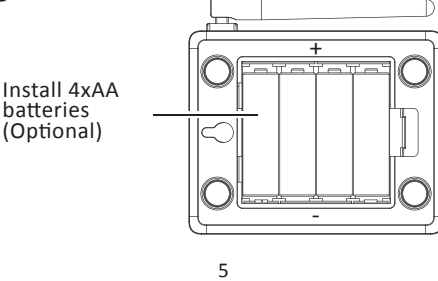
Assembly & Setting

Base Station:

a. Connect the Micro USB cable to the USB port on the base station to use the AC Adapter to supply power.



b. Base Station can also run on (4)AA batteries for up to 2 weeks, as backup in case of power outage.



PIR Motion Sensor:

c. Before installing the PIR Sensor, recharge the sensor (with 18650 battery attached) using the AC adapter to ensure a full charge. The blue light will illuminate while charging. The blue light will turn off once the battery is fully charged.

Note: The sensor has been tested several times in the factory. If the blue light wont illuminate, the battery may be fully charged, you can install it directly.

d. High / Low / Off Switch: First, open the black silicone seal cap at the bottom of the PIR Motion Sensor, then turn on the sensor by switching to High or Low. Set the detection range to High (30feet), Low (20 feet) , or turn sensor Off.

Note: False alarms are minimized by adjusting the sensitivity of the sensor to "Low".

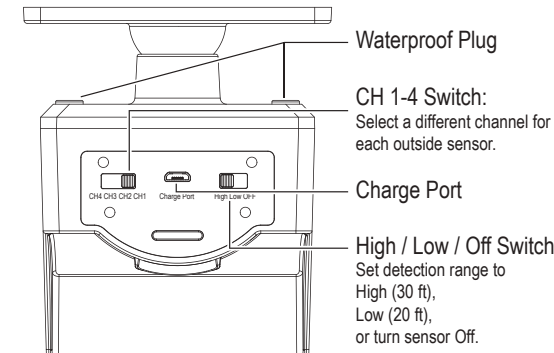
e. CH 1-4 Switch: Select a different channel for each outside sensor. If installing multiple PIR Motion Sensors, ensure that each sensor is set to a different Channel/Zone.

Note: Each Separate channel uses an unique chime, allowing you to match different chimes with different channels.

f. Test the PIR Motion Sensor by waving your hand in front of the sensor. The Base Station will

produce a unique tone based upon the sensor's setting.

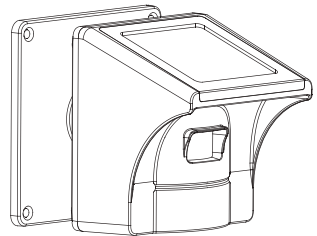
g. When detecting movements, a sensor eye will flash red only when assigned to lines 1 and 2, not lines 3 or 4.



h. Low battery prompt:

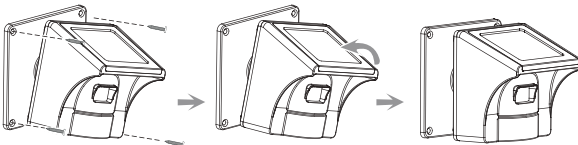
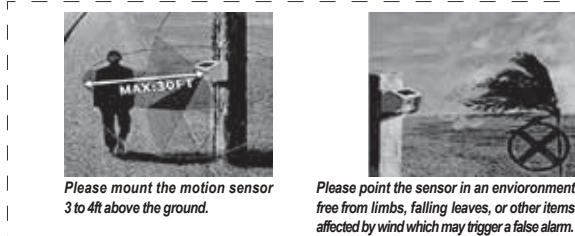
1. When a sensor battery is low, the base station will say "Channe#1/2/3/4 power low, please charge" and the corresponding sensor Zone/Line LED indicator will flash.

2. When the Base Station battery is low the red power LED indicator will flash.



PIR Motion Sensor Installation

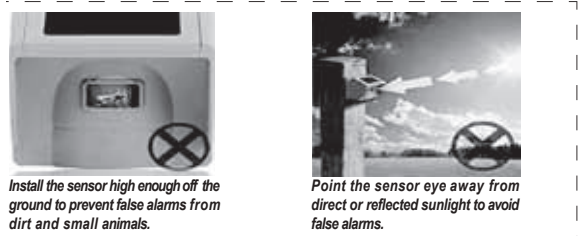
a. Mount the waterproof PIR Motion Sensor vertically on a solid surface 3-5 feet (1-1.5m) above the ground (rotate sensor to access screw holes). The sensor should be able to swivel as needed. Position the sensor to avoid direct sunlight shining on the sensor eye while simultaneously keeping the solar cell facing upward.



Vehicle Alert Installation:

The best mounting position for detecting vehicles is about 4 feet (1.2m)high. Between 0-30 feet (0-9m) from the road and The PIR sensor detects the movements with heat sources. Please adjust the sensor eye with horizontal angle to the engine of the car.

Note : The sensors operate best in the -4F to 140F degree range. The sensors will not work properly out of this temperature range.



Troubleshooting

• **The PIR Motion Sensor operates, but the base station does not respond.**

Check the sensor switch settings (Assembly & Setting) and make sure the sensor and base in the valid 1/2 mile range.

• **PIR Motion Sensor is detecting motion only part of the time.**

Set the PIR Sensor Switch to High sensitivity setting. To detect vehicles, The PIR sensor detects the movements with heat sources. Please adjust the sensor eye with horizontal angle to the engine of the car. Swivel the sensor to obtain the best line of sight to a vehicle.

• **The system is giving false alarms.**

Check for moving tree branches or insects in the sensor window and remove as necessary. Check the Sensor Switches on the PIR Motion Sensor (Assembly & Setting). Ensure that sunlight is not shining directly onto the sensor eye.

• **The system is not getting expected transmission range.**

Ensure that the PIR Motion Sensors are vertically aligned, not attached to the far side of a tree, and away from metal objects. Ensure that the Base Station has the clearest possible line of site to the sensors. The fewer objects between the devices, the longer the range.

Limited 24 months Warranty

EXCEPT AS PROVIDED HEREIN, SELLER MAKES NO EXPRESS WARRANTIES AND ANY IMPLIED WARRANTIES, INCLUDING THOSE OF MERCHANTABILITY AND FITNESS FOR A PARTICULAR PURPOSE, ARE LIMITED IN DURATION TO THE DURATION OF THE WRITTEN LIMITED WARRANTIES CONTAINED HEREIN, EXCEPT AS PROVIDED HEREIN, SELLER SHALL HAVE NO LIABILITY OR RESPONSIBILITY TO CUSTOMER OR ANY OTHER PERSON OR ENTITY WITH RESPECT TO ANY LIABILITY, LOSS OR DAMAGE CAUSED DIRECTLY OR INDIRECTLY BY USE OR PERFORMANCE OF THE PRODUCT OR ARISING OUT OF ANY BREACH OF THIS WARRANTY, INCLUDING, BUT NOT LIMITED TO ANY DAMAGES RESULTING FROM INCONVENIENCE,

LOSS OF TIME, DATA, PROPERTY, REVENUE, OR PROFIT OR ANY INDIRECT, SPECIAL, INCIDENTAL, OR CONSEQUENTIAL DAMAGES,EVEN IF SELLER HAS BEEN ADVISED OF THE POSSIBILITY OF SUCH DAMAGES.

In the event of a product defect during the warranty period, contact the Seller to obtain an RBM#, and then return the product, along with the sales receipt as proof of purchase date, to Seller. The Seller will, at its option either correct the defect by product repair without charge for parts and labor; replace the product with one of the same or similar design or refund the purchase price.

All replaced parts and products and refunded products become the property of the Seller. New or reconditioned parts and products may be used in the performance of warranty service. Repaired or replaced parts and products are warranted for the remainder of the original warranty period. You will be

charged for repairs on products no longer covered by warranty.

For all returns, please write down the RBM# and return date on the outside of the package. This will speed up the process of handling your return and issuing a refund or providing you with a replacement.

Refunds are not issued for products no longer covered by warranty. The warranty will not cover replacements in cases where damage or failure is caused by, or attributable to:

- acts of God, abuse, accident, misuse, improper abnormal usage, failure to follow instructions, improper installation or maintenance, alteration, lightning or other instance of excess voltage or current,
- any repairs other than those provided by the Seller,
- consumables such as fuses or batteries,
- cosmetic damage,
- transportation, shipping or insurance costs,
- or costs of product removal, installation, set-up, service adjustment or reinstallation.

Our goal is for you to have the best possible experience with Hosmart. We appreciate receiving comments on any aspect of your experience with Hosmart or our products. Please contact us with any problems, prior

to leaving any online feedback, so that we may address your concern. We guarantee your complete satisfaction for this transaction. Please note that our office hours are 9:00 am to 5:00 pm (GMT+8) Monday through Friday. Offices are closed Saturday, Sunday and public holidays. We apologize for any late replies during holidays.

FCC SATEMENT

Power:5V DC 1000mA
Backup Battery: DC (4)AA for the Base Station
FCCID: 2AJEM-MC004

This equipment has been tested and found to comply with the limits for a Class B digital device, pursuant to Part 15 of the FCC Rules. These limits are designed to provide reasonable protection against harmful interference in a residential installation. This equipment generates uses and can radiate radio frequency energy and, if not installed and used in accordance with the instructions, may cause harmful interference to radio communications. However, there is no guarantee that interference will not occur in a particular installation. If this equipment does cause harmful interference to radio or television reception, which can be determined by turning the equipment off and on, the user is encouraged to try to correct the interference by one or more of the following measures:
-- Reorient or relocate the receiving antenna.
-- Increase the separation between the equipment and receiver.
-- Connect the equipment into an outlet on a circuit different from that to which the receiver is connected.
-- Consult the dealer or an experienced radio/TV technician for help.

This device complies with part 15 of the FCC Rules. Operation is subject to the following two conditions:

- (1) This device may not cause harmful interference, and
- (2) this device must accept any interference received, including interference that may cause undesired operation.

Changes or modifications not expressly approved by the party responsible for compliance could void the user's authority to operate the equipment.

-- This radio is designed for and classified as "General population/uncontrolled Use"
-- DO NOT operate the radio without a proper antenna attached, as this may damage the radio and may also cause you to exceed RF exposure limits. A proper antenna is the antenna supplied with this radio by the manufacturer or an antenna specifically authorized by the manufacturer for use with this radio, and the antenna gain shall not exceed 2dBi by the manufacturer declared.
-- DO NOT transmit for more than 50% of total radio use time, more than 50% of the time can cause RF exposure compliance requirements to be exceeded.
-- During operation, the separation distance between user and the antenna shall be at least 20cm, this separation distance will ensure that there is sufficient distance from a properly installed externally-mounted antenna to satisfy the RF exposure requirements
-- During transmissions, your radio generates RF energy that can possibly cause interference with other devices or systems. To avoid such interference, turn off the radio in areas where signs are posted to do so. DO NOT operate the transmitter in areas that are sensitive to electromagnetic radiation such as hospitals, aircraft, and blasting sites.

This product produced by:
Macross Microelectronics (HK) LIMIT
FLAT/RM KY001 UNIT 3 27/F HO KING COMM CENTRE
NO.2-16FA YEEN STREET MONGKOK KL