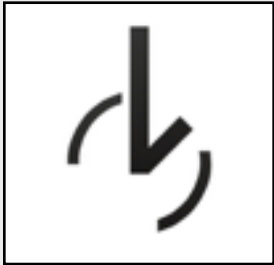


EN

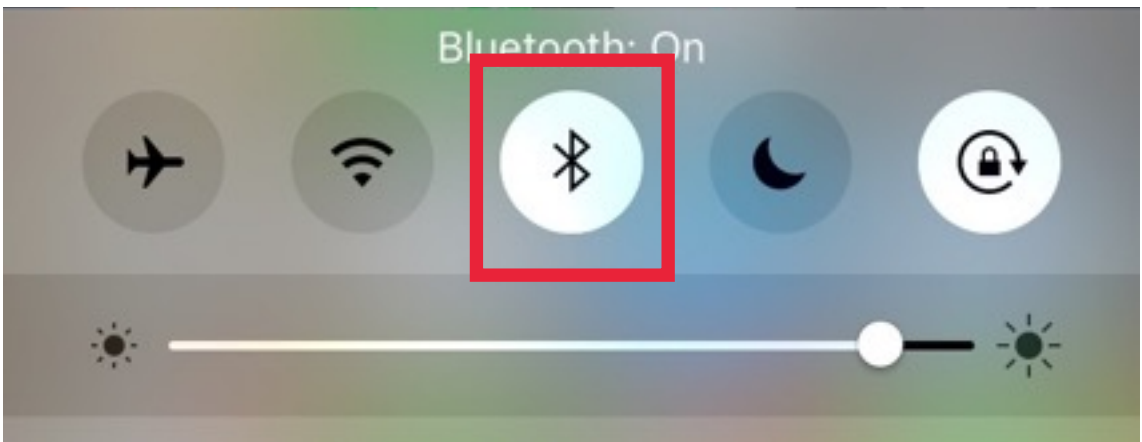
Instructions to pair your watch to your smartphone

1. Install the Blinkked app from App Store or Google Play.

Important note: please ensure you have the latest version of IOS or Android installed.

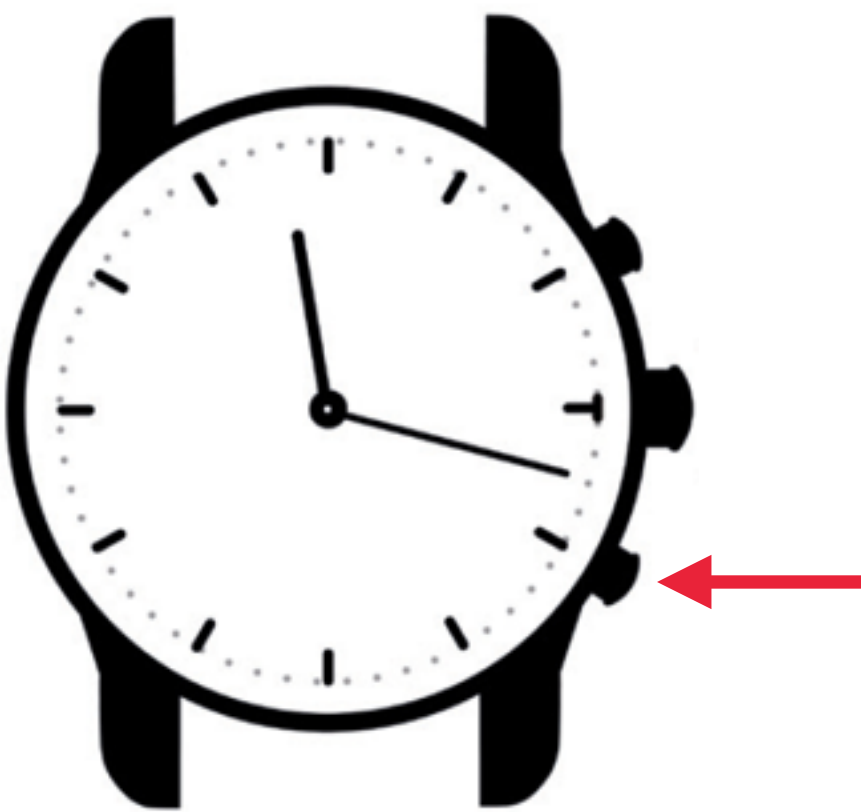


2. Open Control Center panel by swiping up from the bottom on iOS or by swiping down from the top on Android. Then turn Bluetooth ON.



Important note: do not try to connect your watch directly there.

3. Press and hold the 3rd button to turn your watch ON.

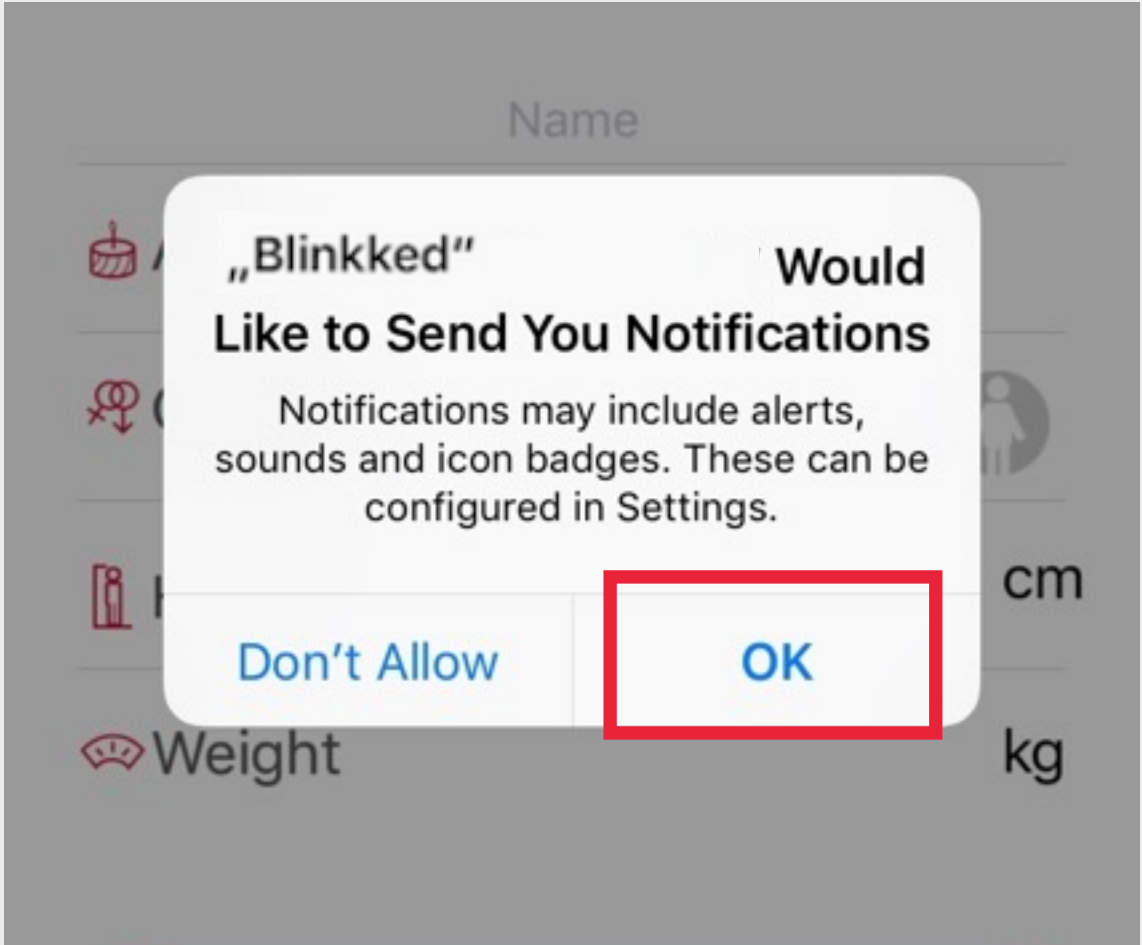


Important note: do not turn your watch OFF by pressing and holding the 1st and 3rd buttons simultaneously. When the watch turns OFF, 6 LED indicators blink. Short press the 1st button to check if your watch is activated by displaying activity progress. Press and hold the 3rd button to turn it ON again.

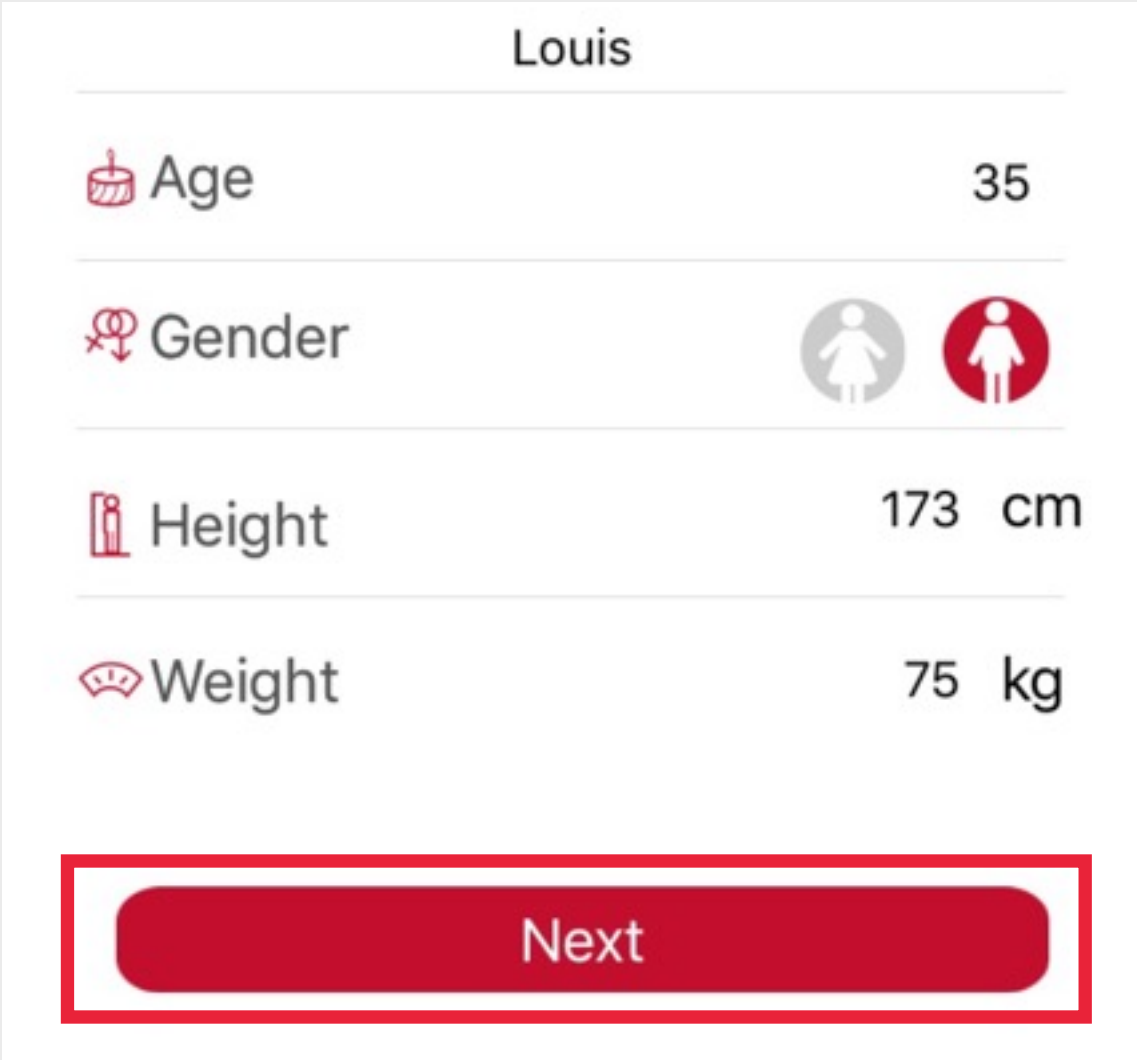
4. All 12 LED indicators light ON for 4 seconds.



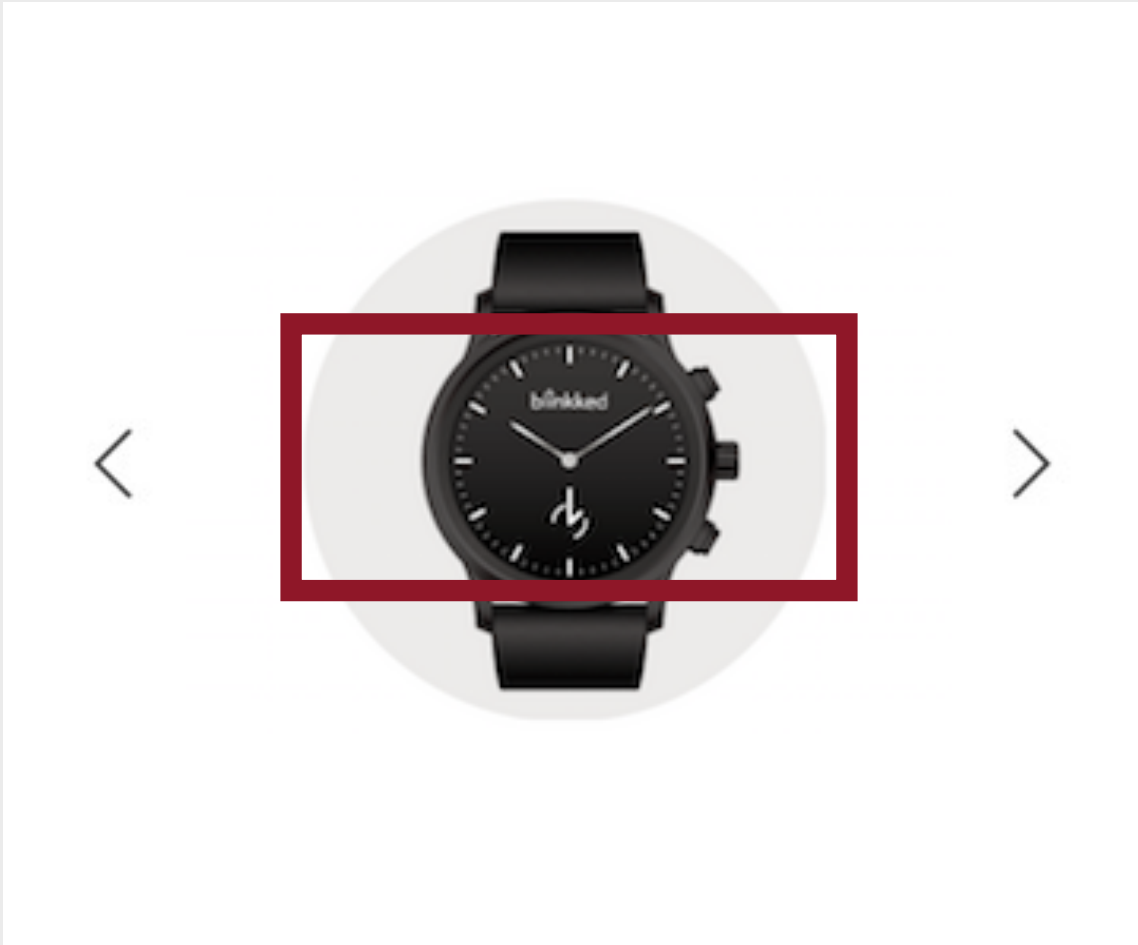
5. Launch the app and allow notifications.



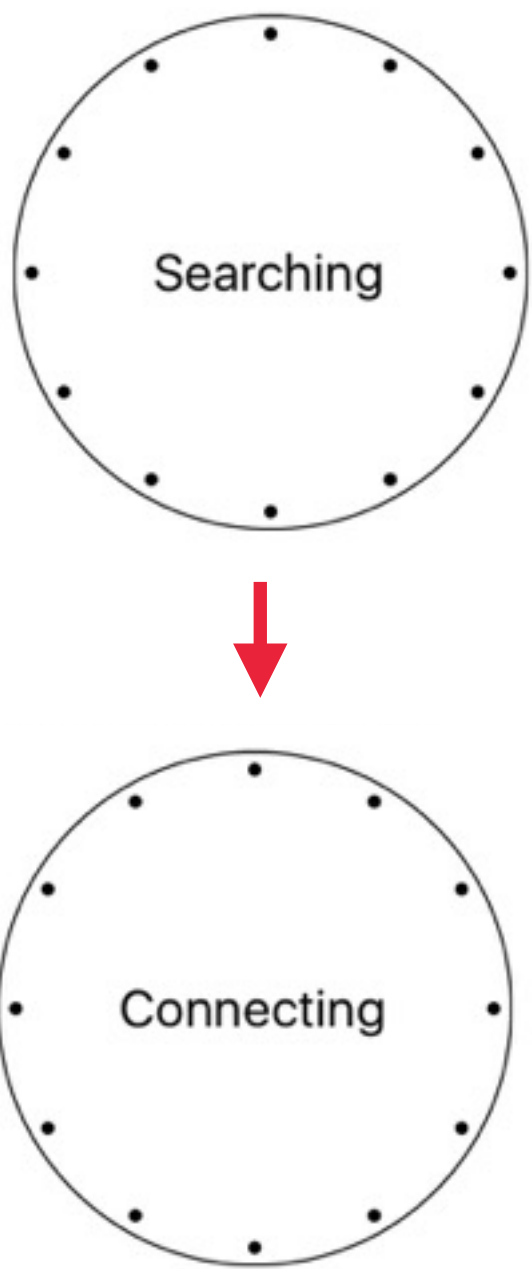
6. Set your profile then tap on "Next".



7. Keep your watch near the phone then tap on the watch photo to start.



8. The app searches and detects your watch.

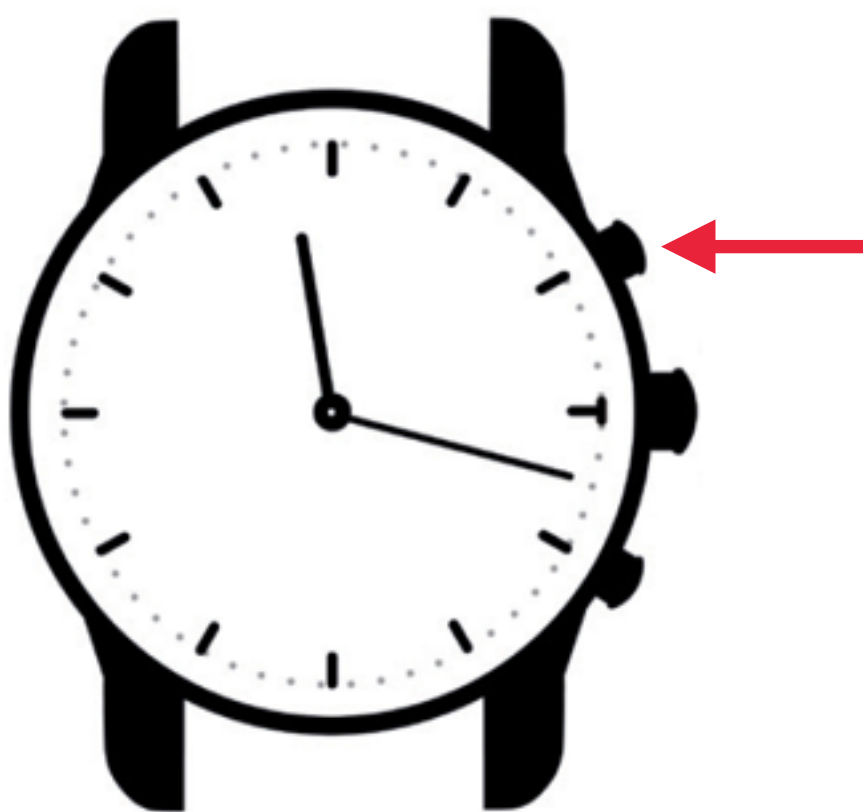


9. Wait until 4 LED indicators flash.



Important note: the 4 LED indicators will flash for about 1 minute while waiting for pairing confirmation.

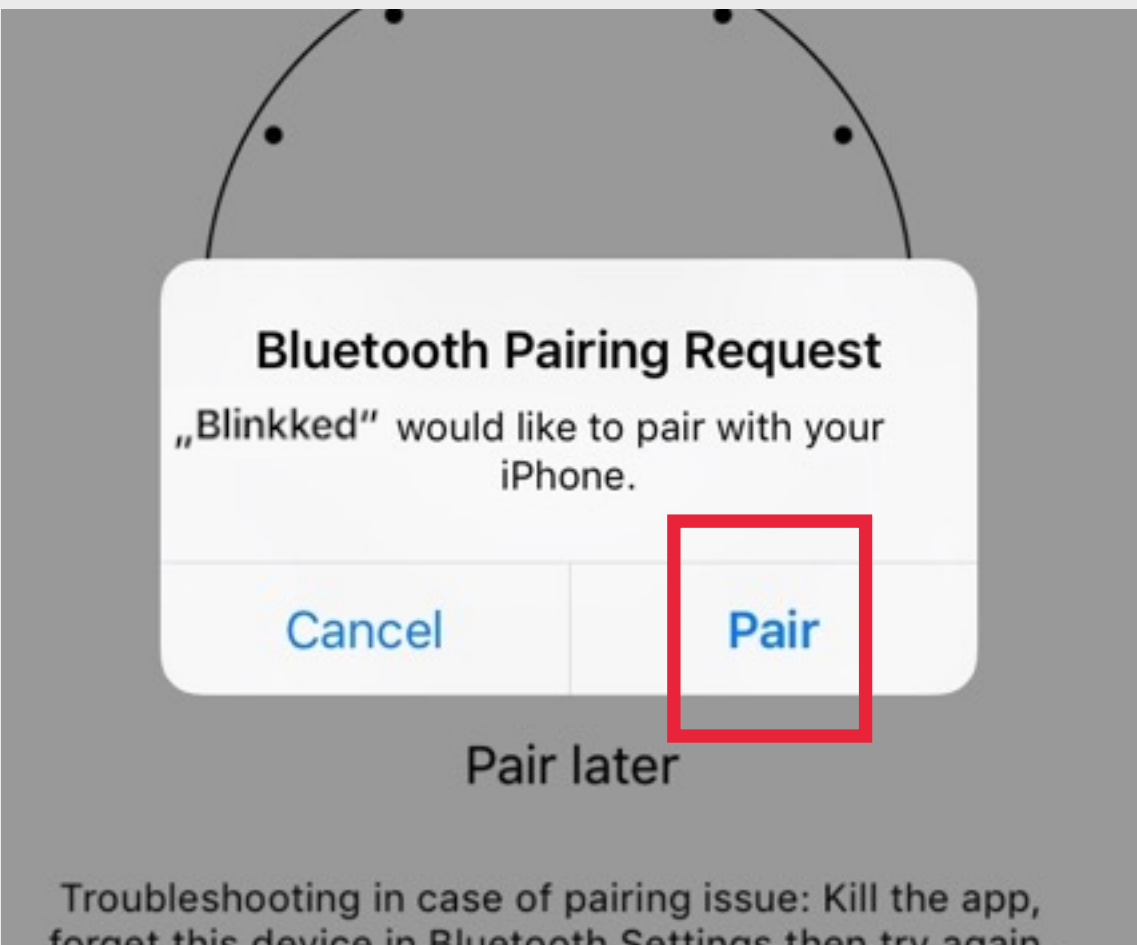
10. Press and hold the 1st button for more than 3 seconds to connect your watch.



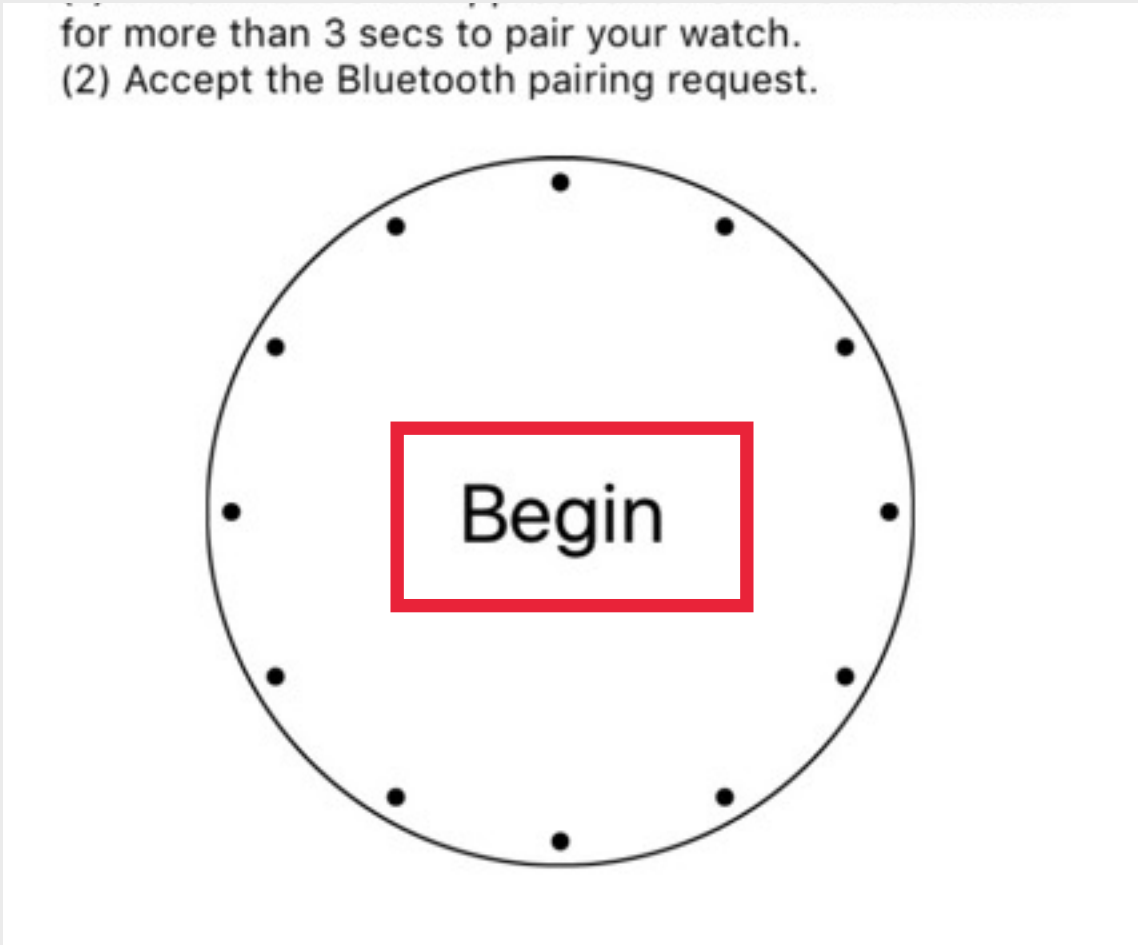
11. The white LED indicators light ON successively from the 1 o'clock to 11 o'clock positions.



12. Accept pairing request (only on iOS).



13. Your watch is now paired and connected to your phone. Tap on "Begin" to set and use your app.



Federal Communications Commission (FCC) Statement

This device complies with part 15 of the FCC Rules. Operation is subject to the following two conditions: (1) This device may not cause harmful interference, and (2) this device must accept any interference received, including interference that may cause undesired operation.

Note: This equipment has been tested and found to comply with the limits for a Class B digital device, pursuant to part 15 of the FCC Rules. These limits are designed to provide reasonable protection against harmful interference in a residential installation. This equipment generates, uses and can radiate radio frequency energy and, if not installed and used in accordance with the instructions, may cause harmful interference to radio communications. However, there is no guarantee that interference will not occur in a particular installation. If this equipment does cause harmful interference to radio or television reception, which can be determined by turning the equipment off and on, the user is encouraged to try to correct the interference by one or more of the following measures:

- Reorient or relocate the receiving antenna.
- Increase the separation between the equipment and receiver.
- Connect the equipment into an outlet on a circuit different from that to which the receiver is connected.
- Consult the dealer or an experienced radio/TV technician for help.

Warning: Changes or modifications made to this device not expressly approved by Blinkked Technologies GmbH may void the FCC authorization to operate this device.

Note: The manufacturer is not responsible for any radio or TV interference caused by unauthorized modifications to this equipment. Such modifications could void the user's authority to operate the equipment.