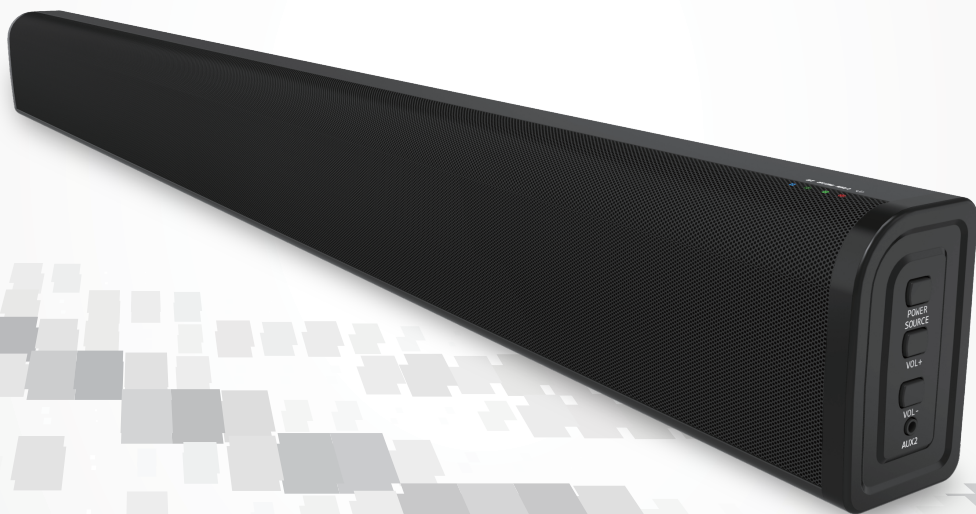


# SEIKI

**SOUND BAR MODEL: SB060D**



## Instruction Manual

PLEASE READ BEFORE OPERATING THIS EQUIPMENT.

# Important Safety Instructions

- Read these Instructions.
- Keep these Instructions.
- Heed all Warnings.
- Follow all instructions.
- Do not use this apparatus near water.
- Clean only with a dry cloth.
- Do not block any ventilation openings. Install in accordance with the manufacturer's instructions.
- Do not install near any heat sources such as radiators, heat registers, stoves, or other apparatus (including amplifiers) that produce heat.
- Do not defeat the safety purpose of the polarized or grounding - type plug. A polarized plug has two blades with one wider than the other. A grounding type plug has two blades and a third grounding prong. The wide blade or the third prong is provided for your safety. When the provided plug does not fit into your outlet, consult an electrician for replacement of the obsolete outlet.
- Protect the power cord from being walked on or pinched particularly at plugs, convenience receptacles, and the point where they exit from the apparatus.
- Only use attachments/accessories specified by the manufacturer.
- This symbol indicates that this product incorporates double insulation between hazardous mains voltage and user accessible parts. Use only with a cart, stand, tripod, bracket, or table specified by the manufacturer, or sold with the apparatus. When a cart is used, use caution when moving the cart/apparatus combination to avoid injury from tip-over.



- Unplug this apparatus during lightning storms or when unused for long periods of time.
- Refer all servicing to qualified service personnel. Servicing is required when the apparatus has been damaged in any way, such as power-supply cord or plug is damaged, liquid has been spilled or objects have fallen into the apparatus, the apparatus has been exposed to rain or moisture, does not operate normally, or has been dropped.

**Special note:** When placing your unit on a lacquered or natural finish, protect your furniture with a cloth or other protective material.

## FCC AND IC STATEMENT FOR USERS

This device complies with part 15 of the FCC Rules. Operation is subject to the following two conditions: (1) This device may not cause harmful interference, and (2) this device must accept any interference received, including interference that may cause undesired operation.

### Federal Communication Commission Interference Statement

This equipment has been tested and found to comply with the limits for a Class B digital device, pursuant to Part 15 of the FCC Rules. These limits are designed to provide reasonable protection against harmful interference in a residential installation. This equipment generates, uses and can radiate radio frequency energy and, if not installed and used in accordance with the instructions, may cause harmful interference to radio communications. However, there is no guarantee that interference will not occur in a particular installation. If this equipment does cause harmful interference to radio or television reception, which can be determined by turning the equipment off and on, the user is encouraged to try to correct the interference by one or more of the following measures:

- Reorient or relocate the receiving antenna.
- Increase the separation between the equipment and receiver.
- Connect the equipment into an outlet on a circuit different from that to which the receiver is connected.
- Consult the dealer or an experienced radio/TV technician for help.

**Caution:** Changes or modifications not expressly approved by SEIKI could void the user's authority to operate the equipment.

This device complies with Industry Canada license-exempt RSS standard(s). Operation is subject to the following two conditions: (1) This device may not cause harmful interference; and (2) this device must accept any interference received, including interference that may cause undesired operation.

### FCC/IC Radiation Exposure Statement

This equipment complies with FCC/IC RSS-102 radiation exposure limits set forth for an uncontrolled environment.

Le présent appareil est conforme aux CNR d'industrie Canada applicables aux appareils radio exempts de licence. L'exploitation est autorisée aux deux conditions suivantes:

- (1) l'appareil ne doit pas produire de brouillage; et
- (2) l'utilisateur de l'appareil doit accepter le brouillage radioélectrique subi même si le brouillage est susceptible d'en compromettre le fonctionnement.



This symbol indicates that this product incorporates double insulation between hazardous mains voltage and user accessible parts.

## Warnings and Precautions

**CAUTION:** TO PREVENT ELECTRIC SHOCK, MATCH WIDE BLADE OF PLUG TO WIDE SLOT, FULLY INSERT.

**WARNING:** To reduce the risk of fire or electric shock, do not expose this apparatus to rain or moisture. When the mains plug or an appliance coupler is used as the disconnect device, the disconnect device shall remain readily operable.

**CAUTION:** These servicing instructions are for use by qualified service personnel only. To reduce the risk of electric shock, do not perform any servicing other than that contained in the operating instructions unless you are qualified to do so.

**WARNING:** Changes or modifications to this unit not expressly approved by the party responsible for compliance could void the user's authority to operate the equipment.

**WARNING:** Do not install this equipment in a confined or building-in space such as a book case or similar unit, and remain a well ventilation conditions at open site. The ventilation should not be impeded by covering the ventilation openings with items such as newspaper, table-cloths, curtains etc.

**WARNING:** Use of this unit near fluorescent lighting may cause interference regarding use of the remote. If the unit is displaying erratic behavior move away from any fluorescent lighting, as it may be the cause.

**CAUTION:** Only use attachments/accessories specified or provided by the manufacturer (such as the exclusive supply adapter, battery etc).

**WARNING:** The battery, batteries, and battery pack shall not be exposed to excessive heat such as sunshine, fire, or the like.

**WARNING:** Lithium batteries, like all rechargeable batteries are recyclable and should be recycled or disposed of in normal household waste. Contact your local government for disposal or recycling practices in your area. They should never be incinerated since they might explode.

**WARNING:** Shock hazard - Do Not Open.

Mains Plug or Direct plug-in adapter is used as disconnect device and it should remain readily operable during intended use. In order to disconnect the apparatus from the mains completely, the Mains Plug or Direct plug-in adapter should be disconnected from the mains socket outlet completely.



**WARNING:** To reduce the risk of fire or electric shock, do not expose this product to smoke, rain, dust or moisture!



The lightning flash with arrow-head symbol, within an equilateral triangle, is intended to alert the user to the presence of non-insulated "dangerous voltage" within the product's enclosure that may be of sufficient magnitude to constitute a risk of electric shock to persons.



To reduce the risk of electric shock, do not remove cover (or back). No user-serviceable parts inside. Refer servicing to qualified service personnel.

**Thank you** for purchasing the excellent quality sound bar for your home. We recommend that you spend some time reading this instruction manual in order that you fully understand all the operational features it offers. You will also find some hints and tips to help you resolve any issues. Read all the safety instructions carefully before use and keep this instruction manual for future reference.

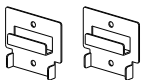
## Check the package contents

Remove all items from the packing. Retain the packaging. If you dispose of it please do so according to local regulations.

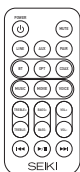
The following items are included:



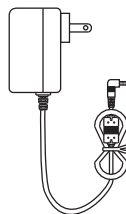
Sound bar product



Wall-mounted  
Bracket



Remote Control



Adapter



RCA Stereo  
Audio Cable



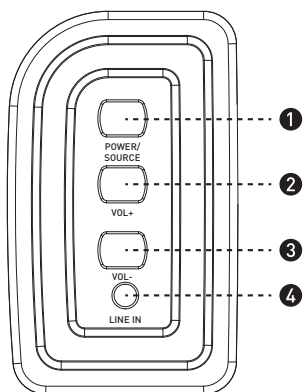
3.5mm to 3.5mm  
Audio Cable



Instruction Manual

# Product description

## Control buttons

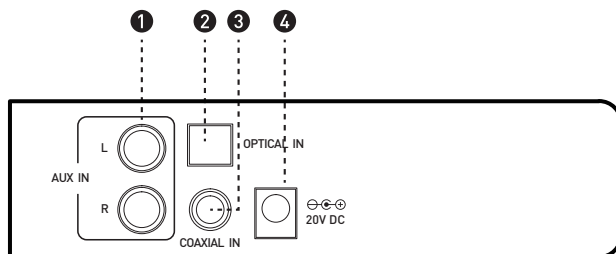


- ❶ Power/source  
(Long press 3 seconds for standby and touch for choosing model.)
- ❷ Volume up
- ❸ Volume down
- ❹ Line in socket

## Indicator lights

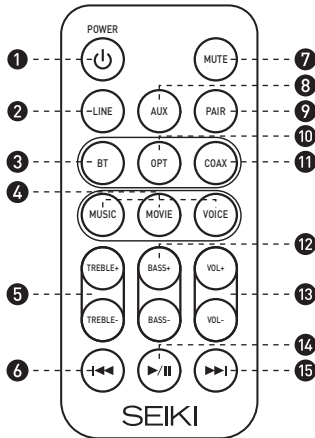
STATE	INDICATOR LIGHTS
Off (standby)	Red
Line in	Green
Aux in	Orange
Optical in	White
Bluetooth	Blue
Coaxial in	Emerald green

## Connections



- ❶ AUX(L/R) Socket
- ❷ OPTICAL Socket
- ❸ COAXIAL Socket
- ❹ DC IN (20V) Socket

# Remote control (batteries installation)



## 1 POWER button

Switch the unit between On and Standby mode.

## 2 LINE button

Line In for 3.5mm input.

## 3 BT button

Bluetooth Input Button.

## 4 Music/Movie/Voice buttons

Press the button to select a desired music mode: MUSIC, MOVIE, VOICE.

## 5 Treble+/Treble- buttons

(It must be in mode of MUSIC.)

## 6 I<< button

Skip backwards to the beginning of the track or to the previous track in Bluetooth mode.

## 7 MUTE button

Silence the unit or restore the sound.

## 8 AUX button

AUX for RCA L/R input.

## 9 PAIR button

Long press the pair button to disconnect bluetooth and search for the equipment again.

## 10 OPTICAL button

OPTICAL Input Buttons.

## 11 COAXIAL button

COAXIAL Input Buttons.

## 12 BASS+/BASS- buttons

(It must be in mode of MUSIC.)

## 13 VOL +/- buttons

Adjust the volume.

## 14 II button

Play/pause/resume playback in Bluetooth mode.

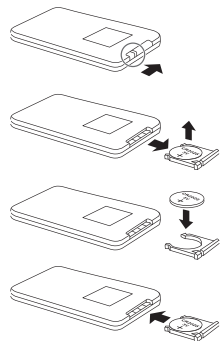
## 15 I>> button

Skip forwards to the next track in Bluetooth mode.

- The remote control sensor at the front of the soundbar is sensitive to the remote control's commands up to a maximum of 6 metres away and within a maximum arc of 40 degrees.
- Please note that the operating distance may vary depending on the brightness of the room.

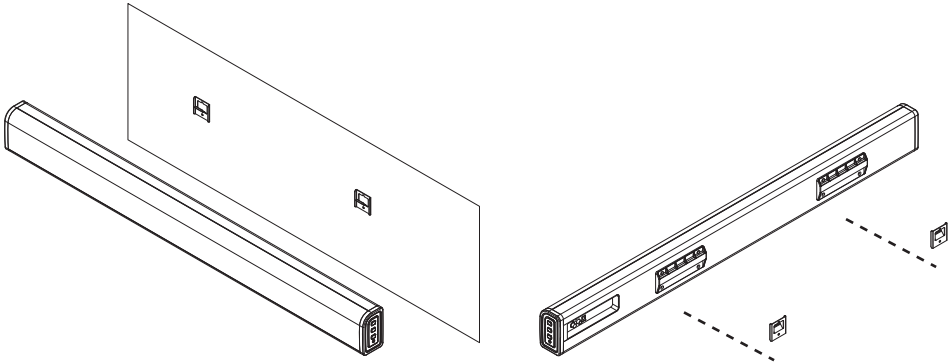
## Remote control battery replacement

- Remove the battery compartment located on the back of the remote control.
- The unit comes standard with a battery installed. To avoid discharging it, it is locked with a plastic tape. Remove the tape to activate the battery.
- If you have to change, insert a CR2025 3V battery, observing the correct polarity.
- Replace the battery compartment.



## Placing TV or Vision Device

The unit supports a TV up to a dimension of 24 inches to 50 inches and within a maximum load of 10kg.

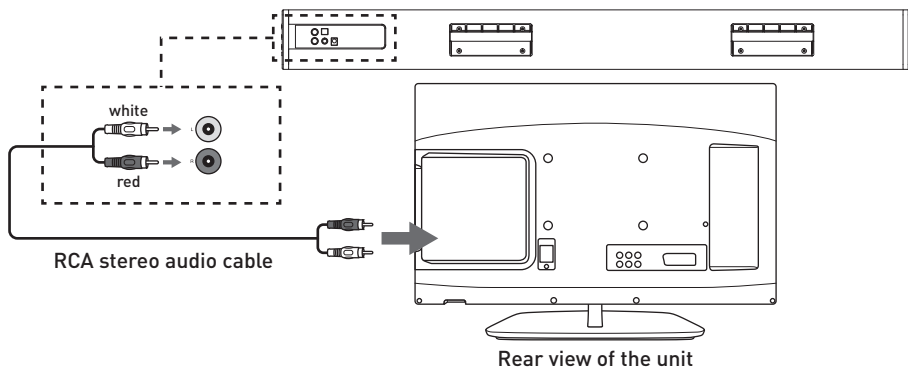


Ensure the TV or Vision Device is placed properly. Turning the volume loud may cause the device to fall down.

## Connections

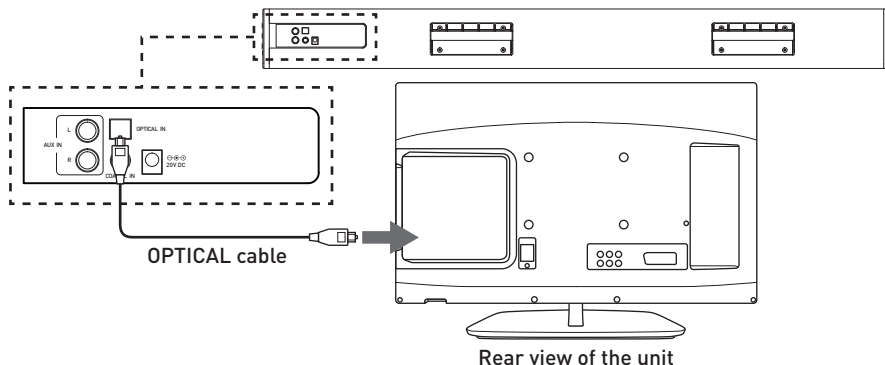
### Using the AUX Connection (AUX)

Use the RCA Stereo Audio Cable to connect the TV's stereo RCA(L/R) Audio output socket to the AUX(L/R) Sockets of the unit. Then press the AUX button on the remote control or press the source button on the unit to choose the AUX function.



## Using the OPTICAL Connection

Use an optical cable to connect the TV's optical output socket to the unit's OPTICAL socket. Before inserting the optical cable, remove the OPTICAL socket cover. Then press the OPT button on the remote control or press the source button on the unit to choose the OPTICAL function.



### Important tips for optical audio:

Use the correct toslink cable and make sure that it is firmly seated in both source and sound bar sockets.

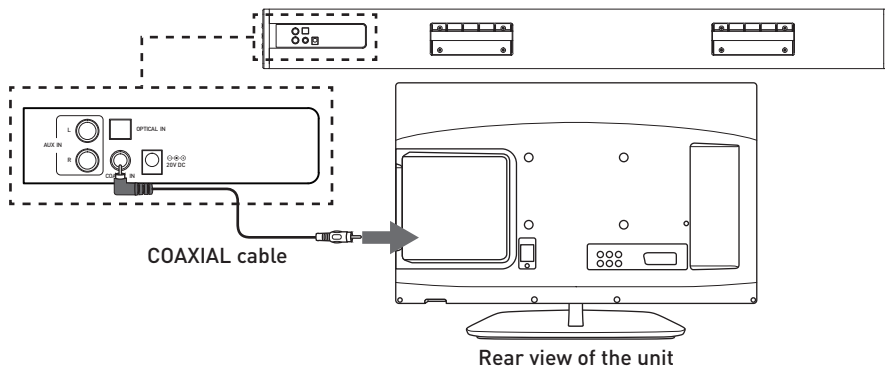
Optical output is activated on the source (they should see a red light emitting from the toslink socket).

It may be labeled SPDIF in the setting menu of the source.

The optical output is set to output PCM and not Dolby Digital.

## Using the COAXIAL Connection

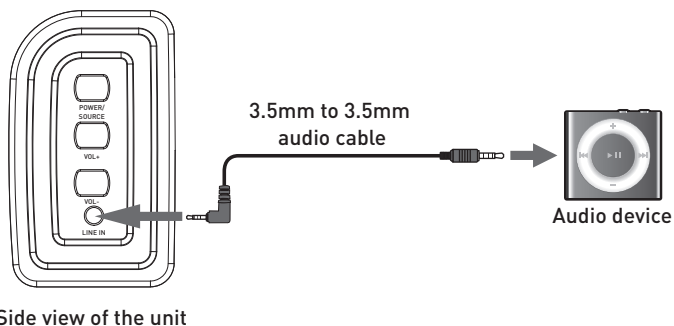
Use a COAXIAL cable to connect the TV's coaxial output socket to the unit's COAXIAL socket. Then press the COAXIAL button on the remote control or press the source button on the unit to choose the COAXIAL function.





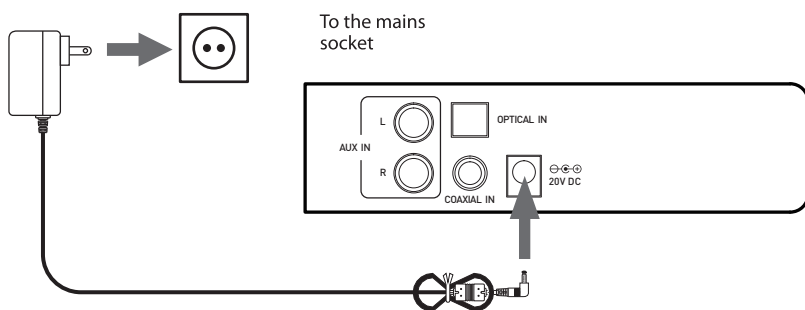
## Using the MP3 LINK Connection (Line In)

Use the 3.5mm to 3.5mm audio cable to connect the audio device's headphone socket to the unit's MP3 LINK socket. Then press the LINE button on the remote control or press the source button on the unit to choose the LINE function.



## Connecting to the Mains Supply

- Ensure that the power supply voltage is in the voltage of 100V~240V.
- This unit is designed to use adapter.
- Connecting the unit to any other power source may cause damage to the unit. Unwind the mains cable to its full length. Connect the mains plug to a mains socket. Make sure the mains plug is fully inserted into the mains socket.
- The mains plug/appliance coupler is used as the disconnect device, the disconnect device must remain readily operable.
- Connect the Adapter to the unit and AC Socket.



- Ensure all audio connections of the unit are connected before connecting to the mains power socket.
- Unplug the power cord from the outlet when the unit is use for an extended period of time.

## Bluetooth Operation

You can listen to tracks from a media device if it is connected to the unit via Bluetooth. The Bluetooth's name is SB060D.



- The operational range between the main unit and a Bluetooth device is approximately 8 meters.
- Before you connect a Bluetooth device to this unit, familiarize yourself with the Bluetooth capabilities of the device.
- Keep this unit away from other electronic devices that may cause interference.

To connect your device to the unit via Bluetooth, follow the steps below:

- Switch the unit on. Press the BT button on the remote control repeatedly to select BT mode.
- The BT light will flicker and then “BT READY” for searching Bluetooth device.
- Activate your Bluetooth device and select the search mode.
- The product model no. will appear on your Bluetooth device, select it.
- You will get a warning tone when connection successful.
- To disconnect the Bluetooth function, switch to another function on the unit or disable the function from your Bluetooth device, or press the pair button on the remote control.



- The player will also be disconnected when your device is moved beyond the operational range.
- If you want to reconnect your device to this player, place it within the operational range.
- If the device is moved beyond the operational range, when it is brought back, please check if the device is still connected to the player.
- If the connection is lost, follow the instructions above to pair your device to the player again.

## Note: Auto-shut function

If no audio signal is continuously detected from BT, OPTICAL in, AUX in or LINE in inputs for more than 30 minutes, the unit will power off automatically.

## Specifications

Power Supply	DC 20V 1.2A
Standby Power Consumption	<0.5watts
Speaker Output Power	30W(Subwoofer)+15W*2
Frequency Respond	30Hz-20KHz
SNR	≥ 70dB
Separation	≥ 45dB
Bluetooth	V3.0+EDR
Dimension(W)×(H)×(D)	39"×4"×3" (980×97×67mm)
Net Weight	5.3lbs (2.4kg)

## Correct disposal of this Product



(Waste Electrical & Electronic Equipment(WEEE)

Your product is designed and manufactured with high quality materials and components which can be recycled and reused.

This symbol means that electrical and electronic equipment, at their end of life should be disposed of separately from your household waste.



**Pb**

Please dispose of this equipment at your local community waste collection/recycling centre.

In the European Union there are separate collection systems for used electrical and electronic products. Please help us to conserve the environment we live in!