

Smart Homeye™ | Mobile App Quick Guide

P/N: 3810-0415A



Smart Homeye™



**This device complies with Part 15 of the FCC Rules.
Operation is subject to the following two conditions:**

- (1) This device may not cause harmful interference. and**
- (2) This device must accept any interference received,
including interference that may cause undesired operation.**

**Any changes or modifications (including the antenna) made to
this device that are not expressly approved by the manufacturer
may void the user's authority to operate the equipment.**

**To comply with FCC RF exposure compliance requirements,
a separation distance of at least 20 cm must be maintained
between the antenna of this device and all persons. This device
must not be co-located or operation in conjunction with any
other antenna or transmitter.**

1. Power Connection

- 1.1. Plug the adaptor to 5V DC power input jack.
- 1.2. Power LED will turn ON when power is connected correctly.

2. Connect Wi-Fi to AP (using WPS button)

- 2.1. Press WPS button on the Access Point.
- 2.2. Press and hold WPS button on the camera for more than 3 seconds. A light on WPS button will change from blinking to solid when connection is established.
- 2.3. Wi-Fi LED will turn ON when Wi-Fi is connected to the Access Point.
- 2.4. If the Access Point does not support the WPS function, set the Access Point information using “Smart Homeye” app.

3. Install “Smart Homeye” App

- 3.1. Scan the QR code below on your **Android** / iOS device to install “Smart Homeye” app.



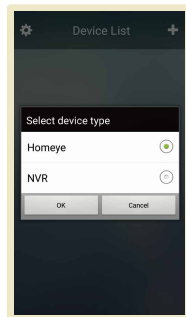
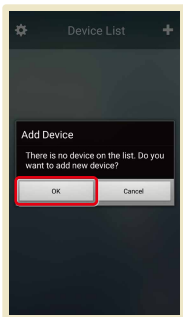
- 3.2. Search for the App using Keyword “Smart Homeye”, “Homeye” on app store and install it.



4. Product registration to “Smart Homeye” App

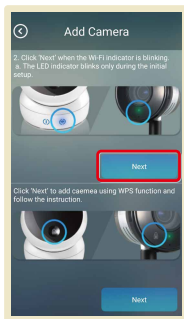
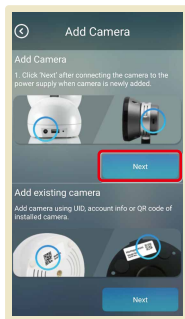
- 4.1. Connect your mobile device to the Access Point via Wi-Fi before connecting to the camera.
- 4.2. Open “Smart Homeye” app.

- 4.3. When the camera is not registered, "Add Device" message will pop-up. Press OK button to add the camera. The camera can also be added by touching on "+" button at the upper-right corner.



4.4. Add New Camera.

- When adding a new camera, touch "Next" button in "Add Camera" window.
- Use "Add existing camera" Menu to simply select a pre-registered camera using UID & QR Code. (You can share the camera using UID and QR Code.)



Android Device



3

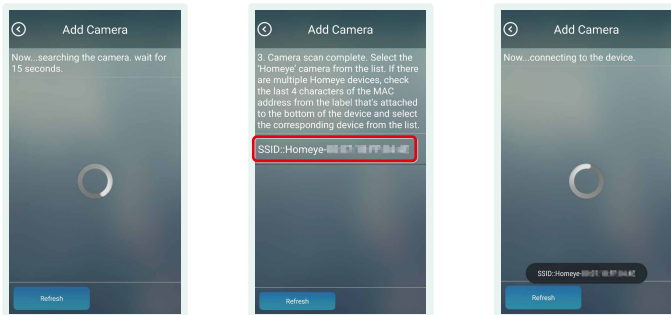


iOS Device

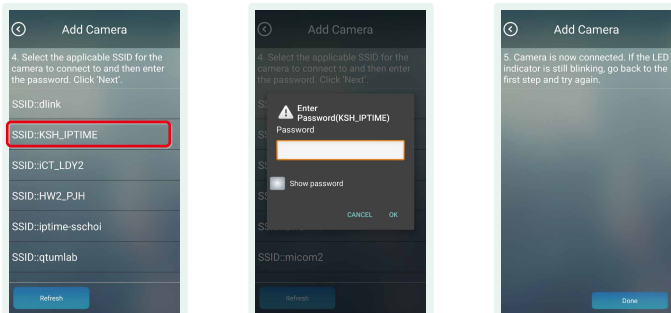


5

- 4.5. Search for the "Homeye". If several "Homeye" products are detected, make sure to select the right one by checking the "Mac Address" printed on the bottom of camera.



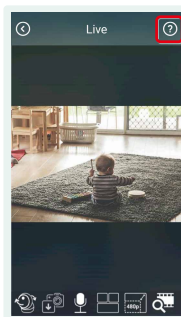
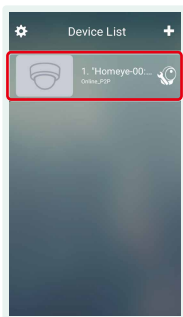
- 4.6. Once "Homeye" is accessed, the available Wi-Fi will be listed. Select the desired Wi-Fi from the list and input the SSID password to connect. Once the registration is done after configuration, the status LED will change from blinking to solid.
- If the status LED is still blinking, the registration is not successful. Please repeat the registration procedure.



4.7. You can view the video by selecting the registered “Homeye” from the Device list.

- Online_P2P: Camera is connected using P2P Mode.
- Online_Relay: Camera is connected using Relay Mode.
- Offline: Camera is disconnected.

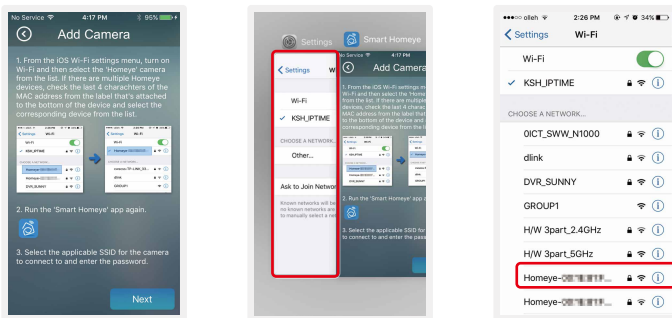
(The Offline maybe due to network or server status, and the status check will repeat every 15 sec.)



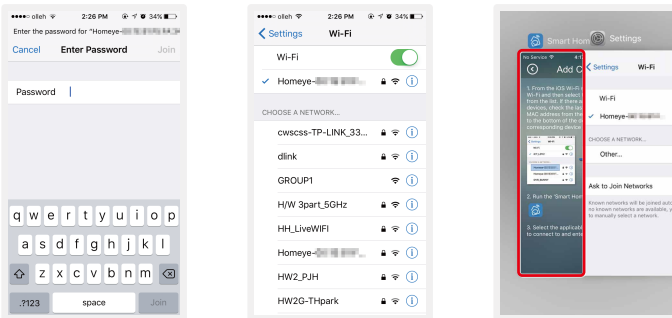
Caution

1. Please use the DC 5V Power Adaptor included in the package.
2. Don't force to reposition the camera's pan and tilt angle manually as it might damage the camera.
3. Don't drop the camera or apply impact.
4. Micro SD Card is a consumable product, and a long-term use may cause data loss or recording error. Periodic management such as regular format schedule is required.
5. When power is on, please use the **"Micro SD Card Safe Removal Button"** to remove the SD Card.
6. There can be a slight shaking during the panning and tilting operation of camera.

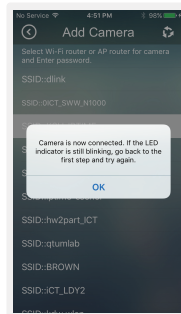
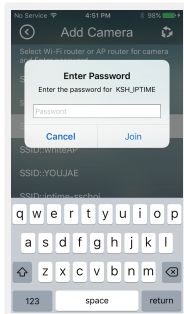
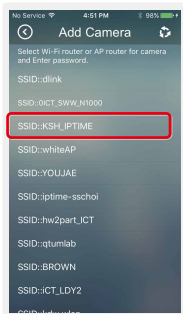
- 4.5. For iOS Devices' security, access the "Homeye" first using the iOS Wi-Fi Configuration Menu and return to "Smart Homeye" App.
- Select the right "Homeye" from searched Wi-Fi list using iOS Wi-Fi Configuration Menu.
 - If several "Homeye" products are detected, make sure to select the right one by checking the "Mac Address" printed on the bottom of camera.



- 4.6. The default password for "Homeye" is "12345678". Access "Homeye" by inputting the Password, and run the "Smart Homeye" App.



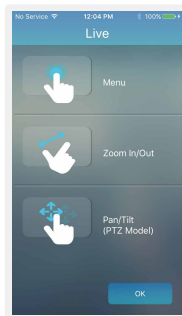
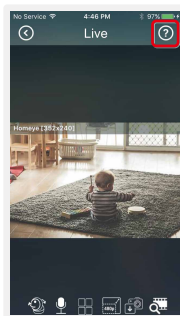
- 4.7. On “Smart Homeye” App, the available Wi-Fi will be listed.
Select the desired Wi-Fi from the list and input the SSID password to connect.
Once the registration is done after configuration, the status LED will change from blinking to solid.
- If the status LED is still blinking, the registration is not successful. Please repeat the registration procedure.



4.8. You can view the video by selecting the registered “Homeye” from the Device list.

- Online_P2P: Camera is connected using P2P Mode.
- Online_Relay: Camera is connected using Relay Mode.
- Offline: Camera is disconnected.

(The Offline maybe due to network or server status, and the status check will repeat every 15 sec.)



Caution

1. Please use the DC 5V Power Adaptor included in the package.
2. Don't force to reposition the camera's pan and tilt angle manually as it might damage the camera.
3. Don't drop the camera or apply impact.
4. Micro SD Card is a consumable product, and a long-term use may cause data loss or recording error. Periodic management such as regular format schedule is required.
5. When power is on, please use the “**Micro SD Card Safe Removal Button**” to remove the SD Card.
6. There can be a slight shaking during the panning and tilting operation of camera.

Specifications

MODEL		Homeye Mini
Camera	Image Sensor	Progressive scan 1/2.9 inch CMOS 2M pixels
	Full Resolution	1,920 x 1,080pixels (FHD)
	Sync System	Internal
	S/N Ratio	62dB or more
	Lens	2.8mm, F1.8
	Day & Night	AUTO(Mechanical ICR)
	Sensitivity (F1.2, 30 IRE , ICR B/W)	- Color : 0.12 Lux - BW : 0 Lux With IR ON
	White Balance	AWB (2.000°K ~ 10,000°K)
	Exposure	ESC
	3D-DNR	Supported
Video	Motion Detection	ON / OFF (1 Programmable Zone)
	Digital Zoom	Supported
	Compression Method	H.265 / H.264 / MJPEG
	Multi-Profile Streaming	- 3 simultaneous video profiles - Select the codec type, resolution and frame rates for each profile
Audio	Intelligent Bit-Rate Control	Hybrid Bit Rate control (VBR+CBR)
	Image Setting	Text overlay, Privacy mask, De-interlace filter
	Mono Upstream	32Kbps G.726 ADPCM, 64Kbps 16bit μ -law PCM ~ Microphone
Network	Mono Downstream	64Kbps 16bit μ -law PCM ~ Speaker
	Network Protocol	IPv4/v6, TCP, UDP, IGMP, ICMP, ICMPv6, ARP, RARP, PPPoE, RTPC, RTP, RTSP, SDP, HTTP, HTTPS, SMTP, FTP, DHCP, UPnP, NTP, DNS, DynDNS
	Security	- User ID & Password protection, IP address filtering - Digest Authentication, User Access Log
	Streaming Method	- RTSP streaming with proprietary format for control information. - Standard RTSP streaming - HTTP streaming
	Wireless LAN	IEEE 802.11b/g/n(HT20/40)
External Terminals	Power	DC 5V, Max 1.0A
	Factory Reset	Camera Reset
	Audio	Microphone, Speaker
Alarm & Event	Intelligent Video	Motion Detection
	Alarm Events	PUSH Notification
	Alarm Buffer (Audio/Video)	configurable Pre-alarm (5 sec) & Post-alarm (10 ~ 60 sec)
Client Software	Smart App.	Android, iOS
Operating Environment / Humidity, Power, Dimensions	Operating Temperature / Humidity	10°C ~ 50°C / 8 ~ 80% RH
	Power Adapter	DC 5V, 1.5A
Local storage	Dimension / Weight	62mm x 120mm x 50mm / Approx. 200g
	Micro SD card	Max 64G (32G Micro SD card)