

---

# LED BLUETOOTH SMART BULB

## Product Manual

### *1. Introduction*

This bulb is a Bluetooth enabled, multicolored, energy efficient smart LED light which can be controlled through your smart phone or tablet with Android or IOS APP.

### *2. LED lights relevant parameters are as follows:*

- Operating voltage: AC86-265V 50/60hz
- Operating temperature: -40°C-85°C
- Power factor: >0.65
- LED chip: SMD3030
- LED light efficiency: 85 lm/W
- CRI: >80
- CCT: 2700K-6500K
- Maximum total luminous flux: 550LM
- Size: 120\*68mm
- Beam angle:170 degrees
- Available control distance: 30m

### *3. APP set up*

***Requirements for the phone:*** Android phones: Android 4.3 and above.

*Apple phone: iPhone 4S and above.*

Users can download and install it via major app store to search for "SuperLight" or scan the following related QR code to install the APP program



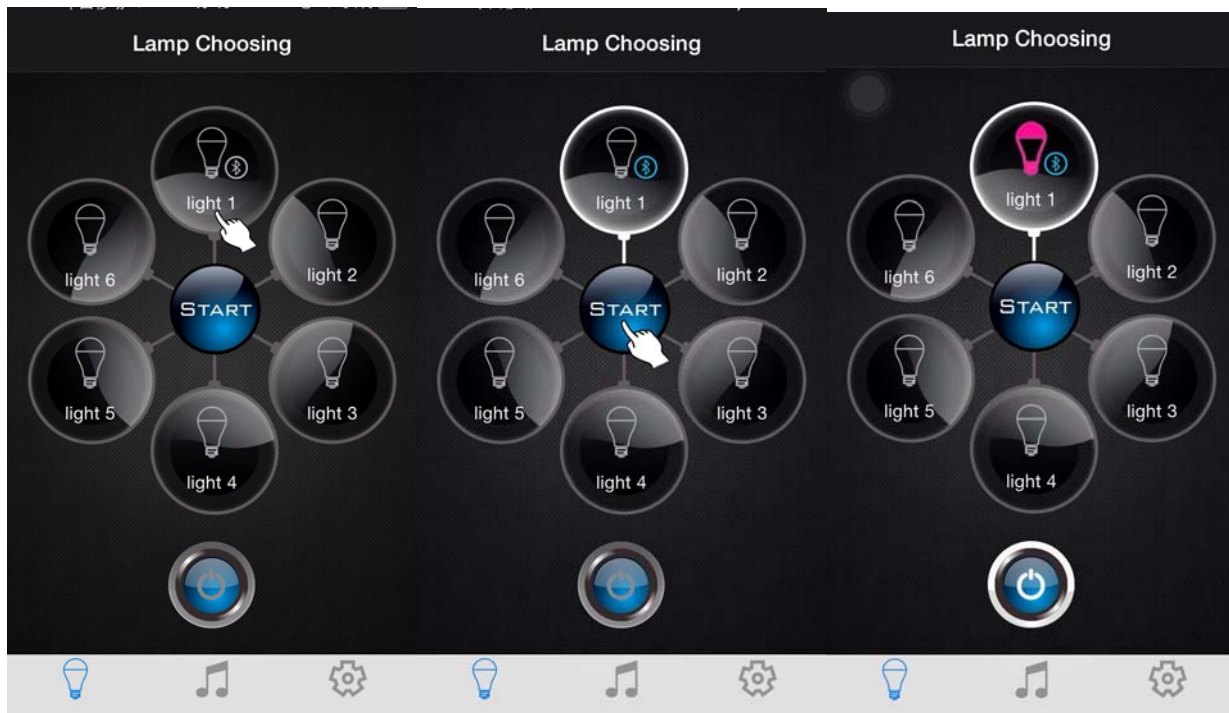
#### *4. Install and Pairing*

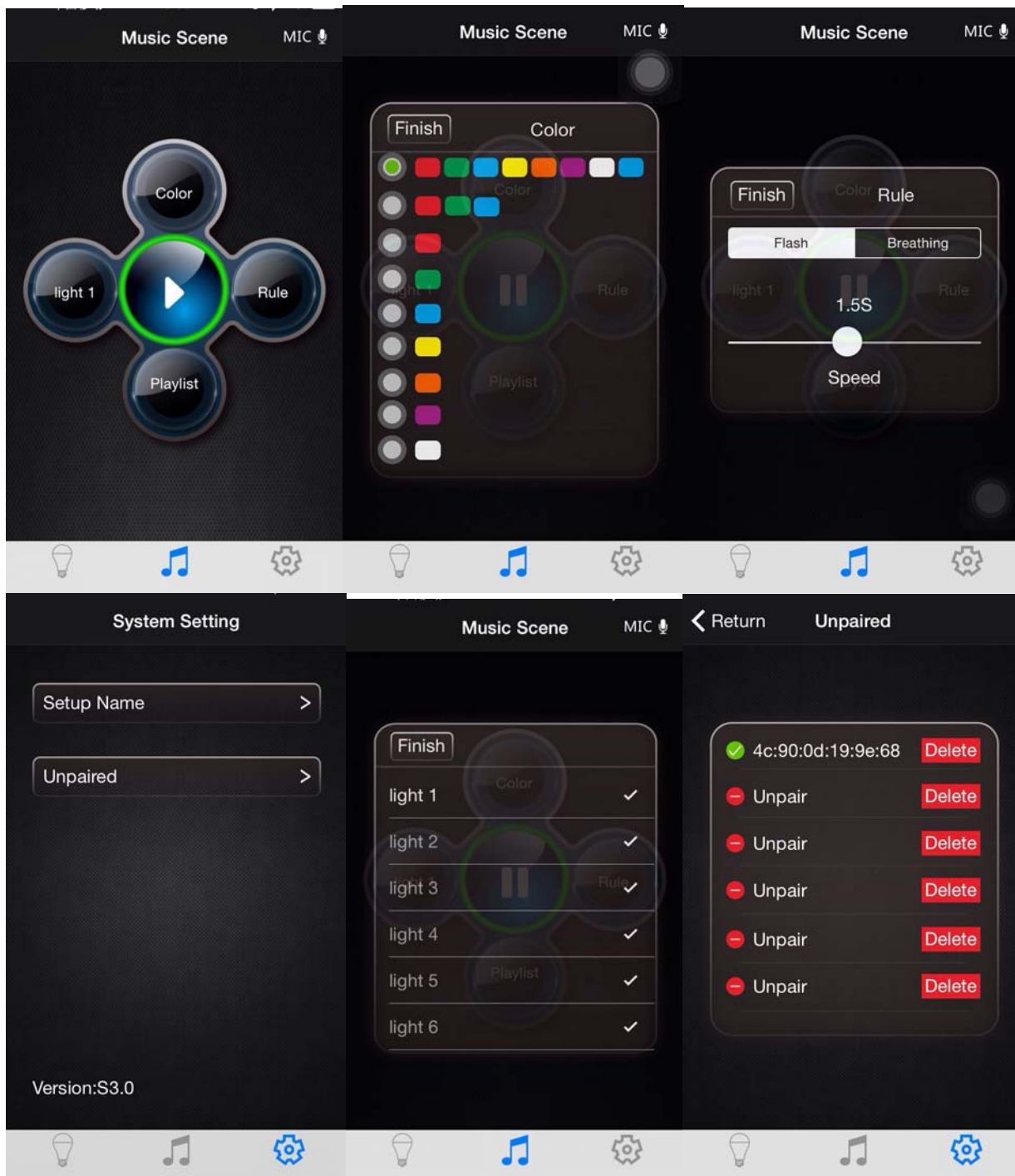
Please turn off power and screw the product into the E27 lamp socket, and then open the App.

- For the first time electrify, if the light bulb is in a constant light state, it means that the APP switch is on; If the light bulb flash quickly, it means that the APP switch is close.

Please connect to the APP normally, click the switch on the APP, then the light bulb can be light and used.

- If you didn't open Bluetooth on your phone, there will appear a prompt that an app wants to turn on Bluetooth and please click Allow.
- If Bluetooth is turned on, it will automatically pair with bulb. The Circle become brightness its start working.
- If more than one bulb energized simultaneously, it also can be connected automatically to APP, re-grouped in App. You can control through "Light 1, 2, 3, 4, 5, 6".
- If it appears out of sync with multiple bulb, switch off the APP and restart.





## 5. Attention

**5-1.** Make sure the lamp base type is consistent with the installation of lamp holder, do not operate with electricity.

**5-2.** Do not use LED light on a wide range of metal regions or regions near strong electromagnetic wave, otherwise the communication distance will be seriously affected.

---

## ***6. FCC Warning Statement***

Changes or modifications not expressly approved by the party responsible for compliance could void the user's authority to operate the equipment. This equipment has been tested and found to comply with the limits for a Class B digital device, pursuant to Part 15 of the FCC Rules. These limits are designed to provide reasonable protection against harmful interference in a residential installation. This equipment generates uses and can radiate radio frequency energy and, if not installed and used in accordance with the instructions, may cause harmful interference to radio communications. However, there is no guarantee that interference will not occur in a particular installation. If this equipment does cause harmful interference to radio or television reception, which can be determined by turning the equipment off and on, the user is encouraged to try to correct the interference by one or more of the following measures:

- - Reorient or relocate the receiving antenna.
- - Increase the separation between the equipment and receiver.
- - Connect the equipment into an outlet on a circuit different from that to which the receiver is connected.
- - Consult the dealer or an experienced radio/TV technician for help.