

# Installation Guide

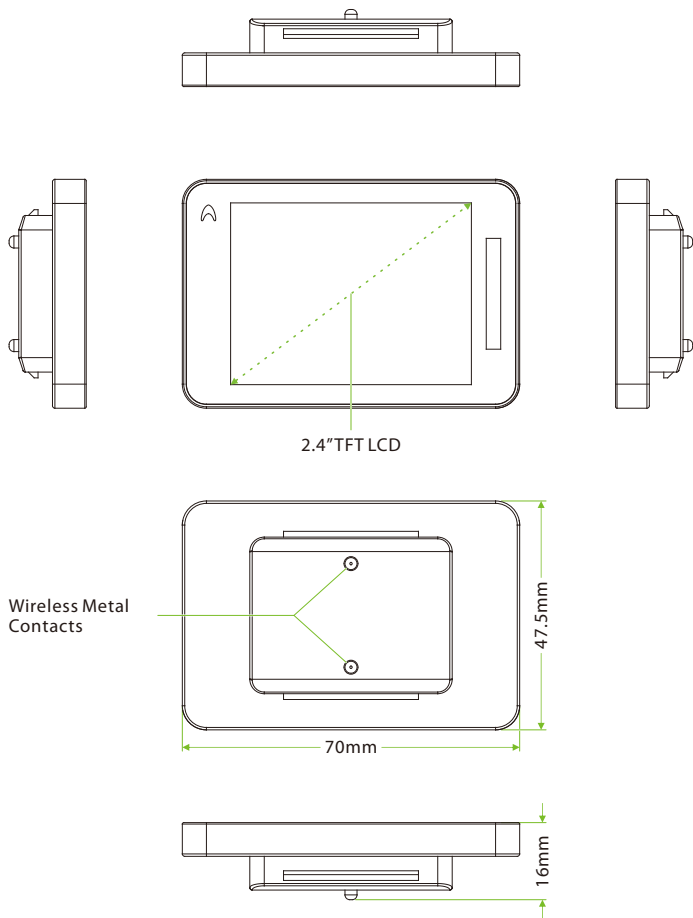
---

**Model:** DG04-B2F24

Version: 1.0

English

## Dimensions



## About the Device Installation

Please refer to the following recommendations for installation.



INSTALL INDOORS  
ONLY



AVOID INSTALLATION  
NEAR  
GLASS WINDOWS



AVOID DIRECT  
SUNLIGHT  
AND EXPOSURE

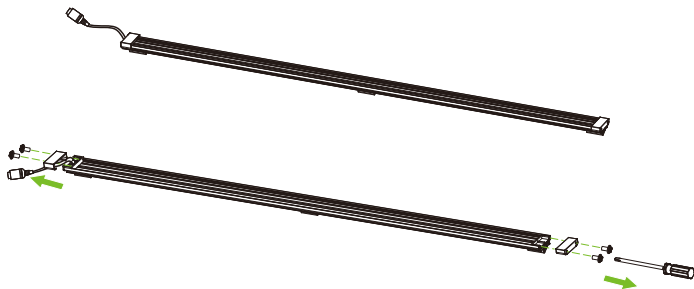


AVOID USE OF ANY  
HEAT SOURCE  
NEAR THE DEVICE

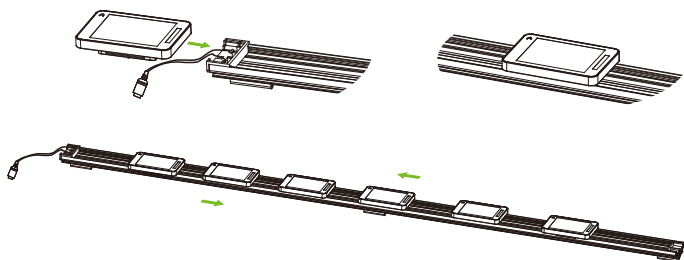
- Avoid direct contact to sunlight for a long time.
- Protect the device from moisture, water, and rain.
- Handle the device with care.
- Ensure that the device is not installed near the sea or in other locations where metal oxidation and rust may develop if the device is exposed for an extended period.
- Protect the device from lightning.
- Avoid using the device in acidic or alkaline environments for extended periods.

## How to Install the Device on the Guideway?

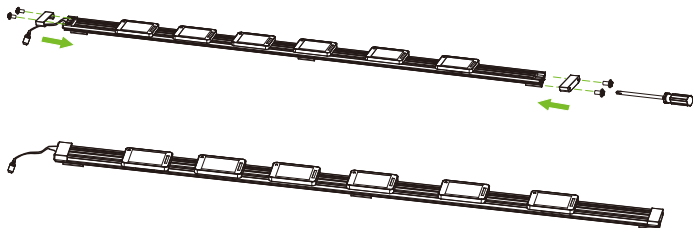
**Step 1:** Use a screwdriver to unscrew the clips on both sides of the guideway.



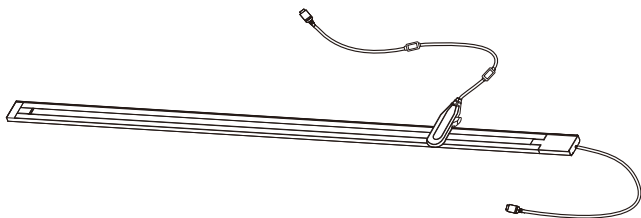
**Step 2:** Position the device with its back facing the guideway, snap it onto the guideway, and slide it towards the center. This setup supports the installation of multiple devices.



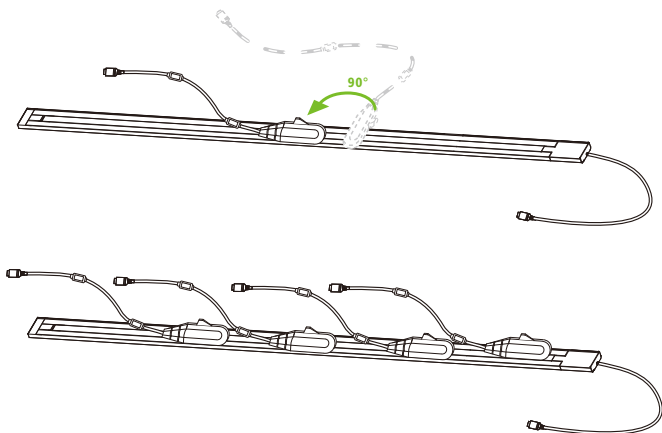
**Step 3:** Reinstall the clips on the guideway.



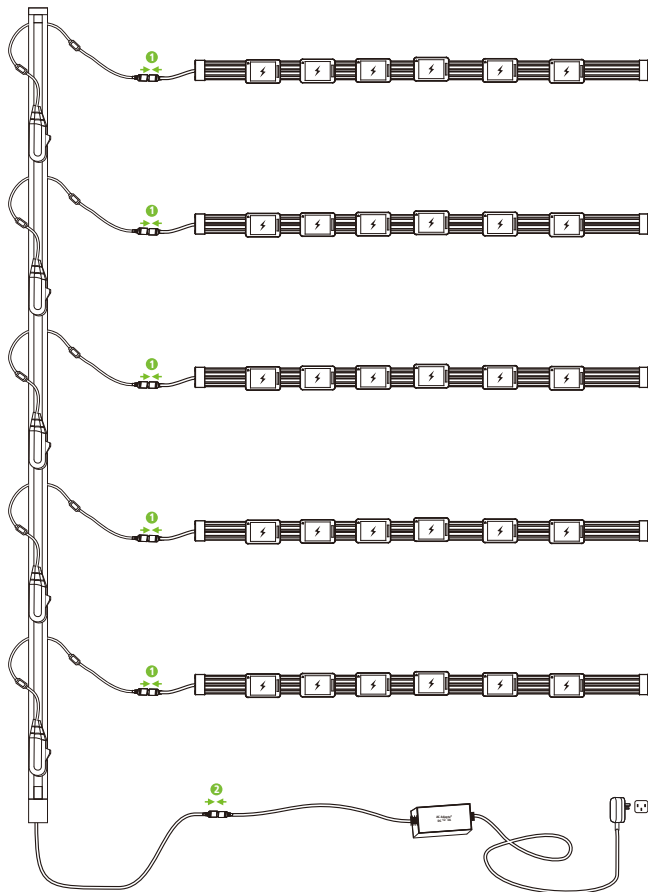
**Step 4:** Snap the terminals of the power connection cable vertically onto the magnetic conductive strip.



**Step 5:** Secure the power connection cable to the magnetic conductive strip by rotating it 90° counterclockwise as shown in the figure below. This method supports the installation of multiple power connection cables.



**Step 6:** First, connect the guideway to the magnetic conductive strip, and then turn on the power to the magnetic conductive strip. Once the guideway is powered up, the device receives energy from Wireless Metal Contacts. This wireless charging technology is similar to the Qi method used in cell phones, ensuring safety and harmless.





## Warning:

This device complies with Part 15 of the FCC Rules. Operation is subject to the following two conditions: (1) This device may not cause harmful interference, and (2) this device must accept any interference received, including interference that may cause undesired operation.

This equipment has been tested and found to comply with the limits for a Class B digital device, pursuant to Part 15 of the FCC Rules. These limits are designed to provide reasonable protection against harmful interference in a residential installation. This equipment generates, uses, and can radiate radio frequency energy and, if not installed and used in accordance with the instructions, may cause harmful interference to radio communications. However, there is no guarantee that interference will not occur in a particular installation. If this equipment does cause harmful interference to radio or television reception, which can be determined by turning the equipment off and on, the user is encouraged to try to correct the interference by one or more of the following measures:

- Reorient or relocate the receiving antenna.
- Increase the separation between the equipment and receiver.
- Connect the equipment into an outlet on a circuit different from that to which the receiver is connected.
- Consult the dealer or an experienced radio/TV technician for help.

### FCC RF Radiation Exposure Statement:

- This Transmitter must not be co-located or operating in conjunction with any other antenna or transmitter.
- This equipment complies with RF radiation exposure limits set forth for an uncontrolled environment.
- This equipment should be installed and operated with minimum distance 20cm between the radiator and your body.

**IMPORTANT!** Any changes or modifications not expressly approved by the party responsible for compliance could void the user's authority to operate the equipment.

Teletech Park #03/32, 20 Science Park Road,  
117674, Singapore.  
[www.zkdigimax.com](http://www.zkdigimax.com)

