

Annex C Photo documentation

Appendix to Test Report No.: 1-1889/16-01-10



Testing Laboratory

CTC advanced GmbH

Untertürkheimer Straße 6 – 10

66117 Saarbrücken/Germany

Phone: + 49 681 5 98 - 0

Fax: + 49 681 5 98 - 9075

Internet: <http://www.ctcadvanced.com>

e-mail: mail@ctcadvanced.com

Accredited Test Laboratory:

The testing laboratory (area of testing) is accredited according to DIN EN ISO/IEC 17025 (2005) by the Deutsche Akkreditierungsstelle GmbH (DAkkS)

The accreditation is valid for the scope of testing procedures as stated in the accreditation certificate with the registration number: D-PL-12076-01-01

Photo 1: Measurement System DASY 5

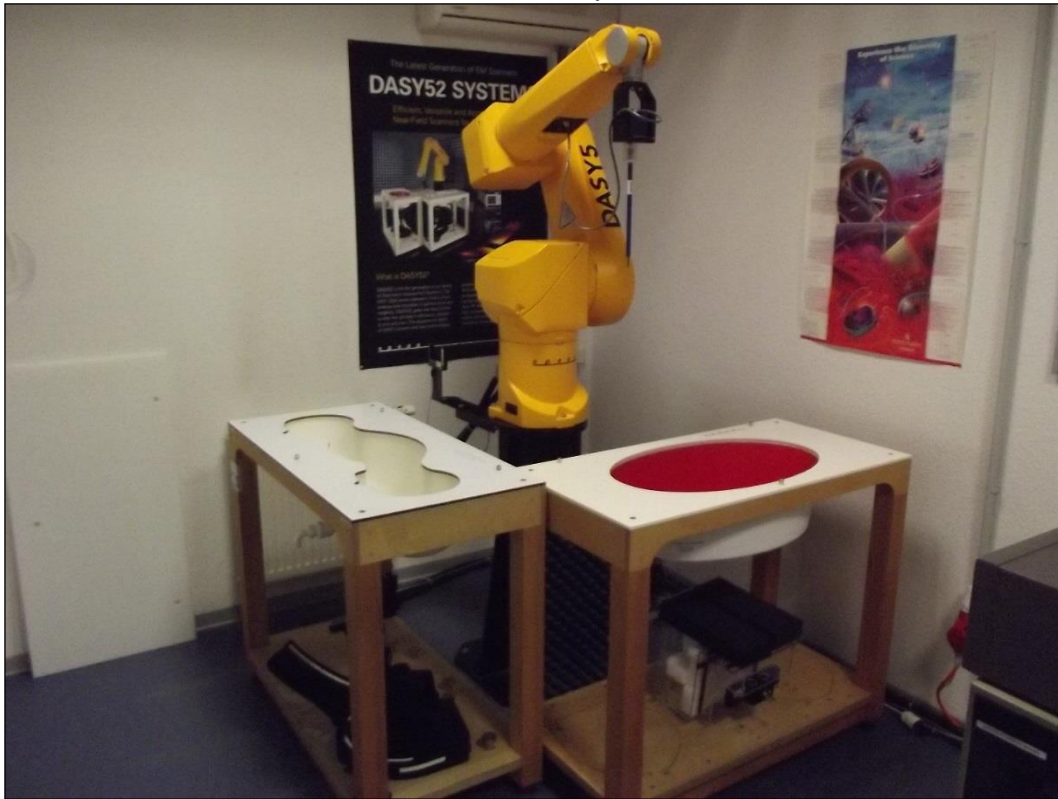


Photo 2: DUT with objective and accessory



Photo 3: DUT with objective and accessory



Photo 4: DUT - Front view (Display)



Photo 5: DUT - Top side view

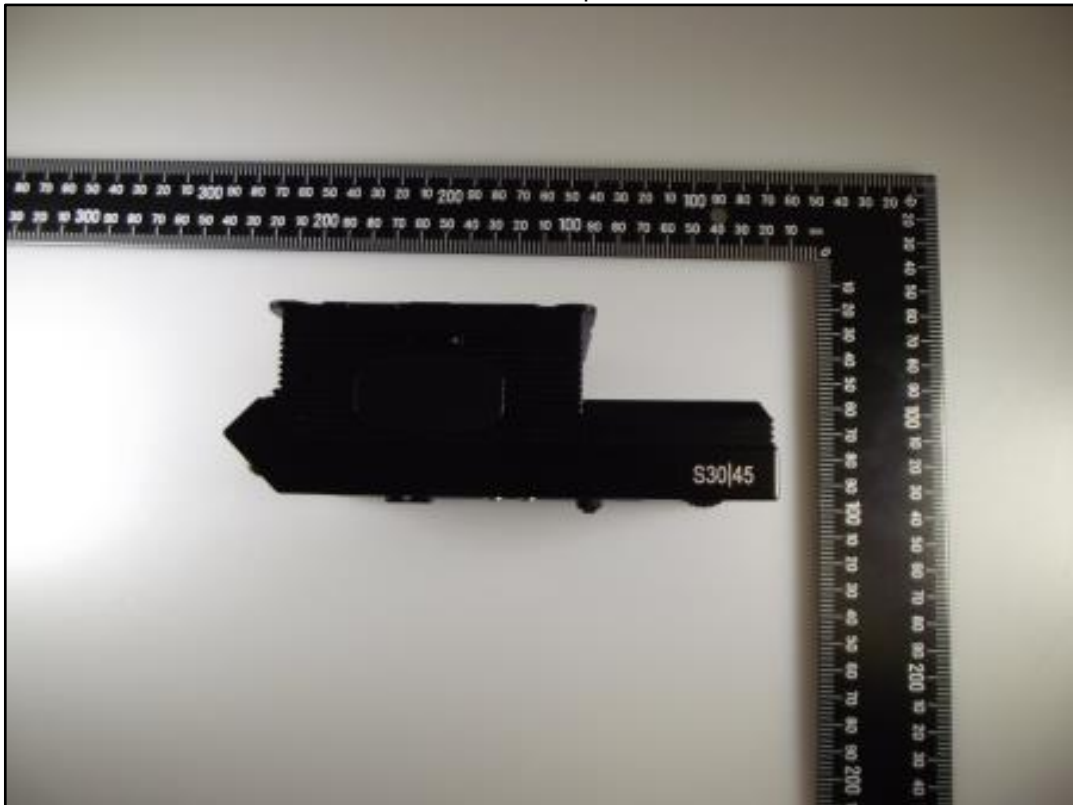


Photo 6: DUT - Rear side view (image sensor)

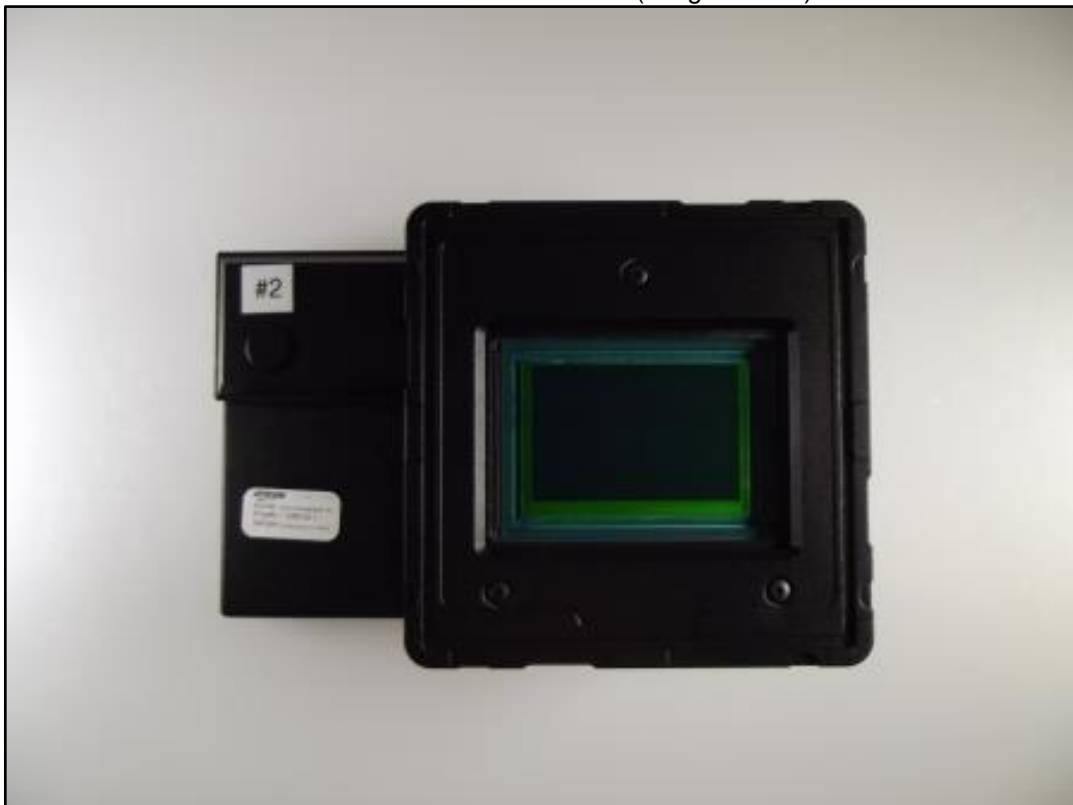


Photo 7: DUT - Bottom side view



Photo 8: DUT - Left side view



Photo 9: DUT - Right side view

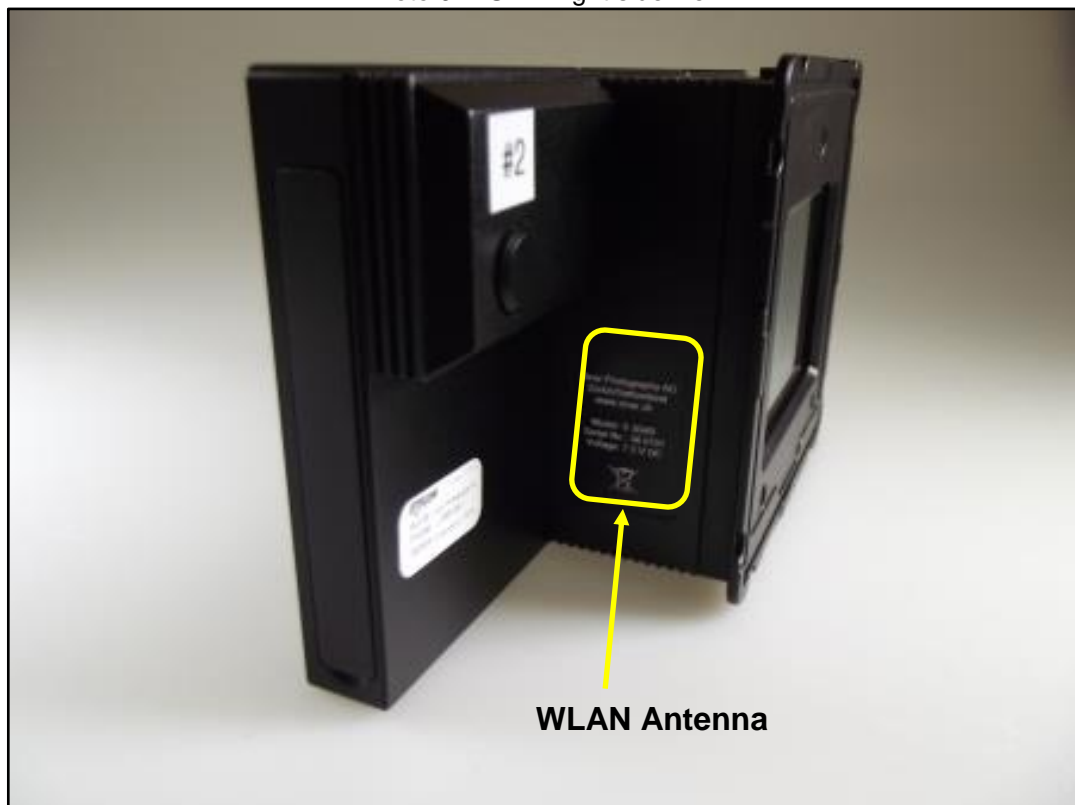


Photo 10: DUT - Right side view (Label)



Photo 11: Measurement position - front side (display) with 0mm distance



Photo 12: Measurement position - top side with 0mm distance



Photo 13: Measurement position - bottom side with 0mm distance



Photo 14: Measurement position - right side with 0mm distance



Photo 15: Measurement position - rear/right side with 0mm distance

