

Security alarm system

User Manual



Ver.2015

Table of Contents

Control panel layout	01~02
Preparation before Use	03~04
Connect PSTN Land Line	03
Insert a SIM Card	04
Power on	04
Control Panel Operation	05~08
Alarm Control	05~06
Access Control System	07
Make Phone Calls	07
Voice memo	08
Function Setting	08
LCD Display Menu	09~10
Settings	28~39
Alarm Phone Number setting	11
Add/Delete Accessories	11~14
System Settings	15~22
History	22
SMS Operation	23~25
APP Operation	26~27
Accessories	28~39
Remote control	28~29
Door/Window Contact	30~31
PIR motion sensor	32~38
RFID tag	39
Additional siren	39
Maintenance	40
FAQ	41
Specifications	42~43
Disclaimer	44

System overview

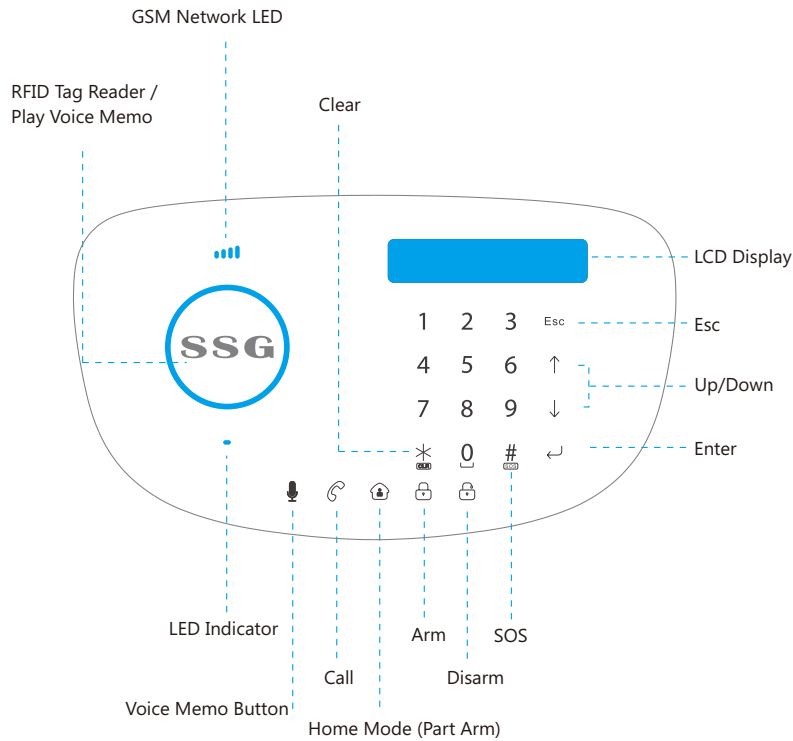
The system consists of a master control panel and various wire/wireless sensors, once any unusual is detected, the alarm control panel will hoot on-site, meanwhile, it will send SMS to or call the preset phone numbers. complete wireless design makes it easy to setup and install, it is widely used in residential, commercial, industrial, personal protection, and military properties.

Main features

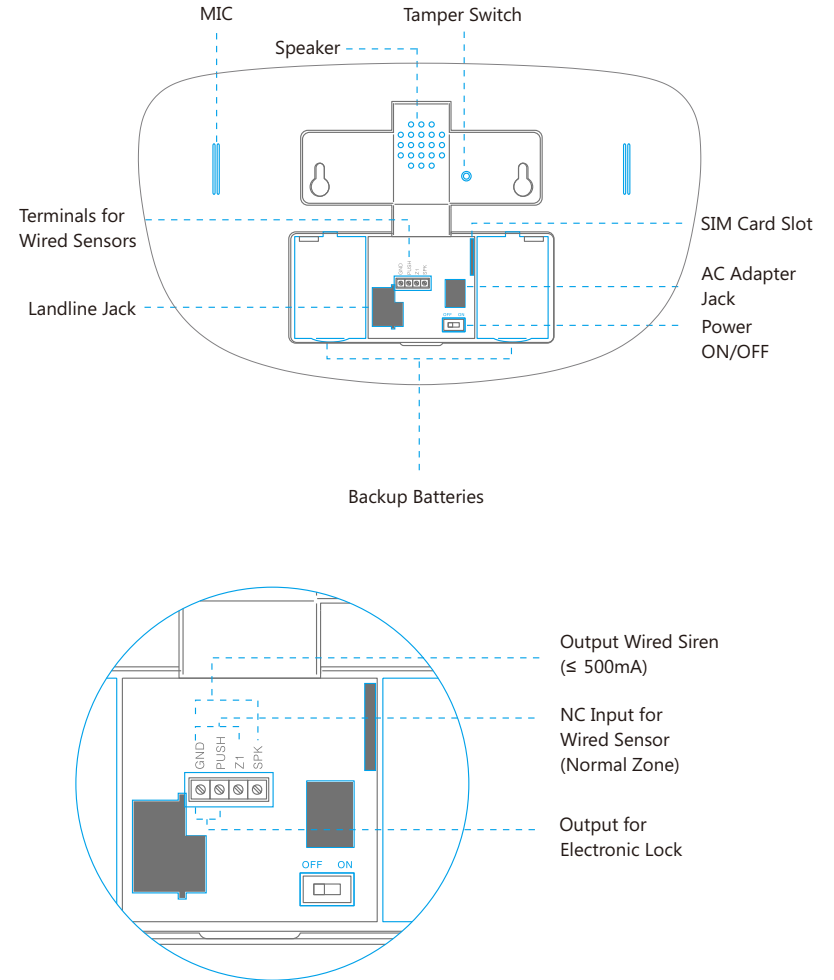
- GSM+PSTN dual network communicator based, more reliable
- 100% wireless, easy to setup and install
- Stylish design with touch keypad and LCD display
- Support 30 remote controls, 99 wireless sensors, and 99 RFID tags
- Can store 5 alarm phone numbers, 5 SMS alert phone numbers, 2 CSM numbers and speed dial number
- Support 10s voice message recording and replay, even you can leave a voice message from phone remotely.
- Support RFID tags to disarm and unlock the electronic lock
- Support maximum 150 alarm event logs
- One group of timing arm and disarm
- Support exit & entry delay
- With password protection
- 4 types of zone for optional: Normal, Home, 24 hours, Delay
- All zones and RFID tags can be renamed
- Remote control or setting by SMS, phone call and APP (iOS and Android)
- SMS alert for power failure/recovery and low battery
- Two-way communication to talk and hear through built-in speaker and MIC
- Nine optional display languages: English, France, German, Spanish, Finland, Swedish, Norwegian, Danish, Italian
- 10 optional languages for SMS notification and APP:
 - English, France, German, Spanish, Finland, Swedish, Norwegian, Danish, Italian, Chinese

Control Panel Layout

Front Side



Rear Side

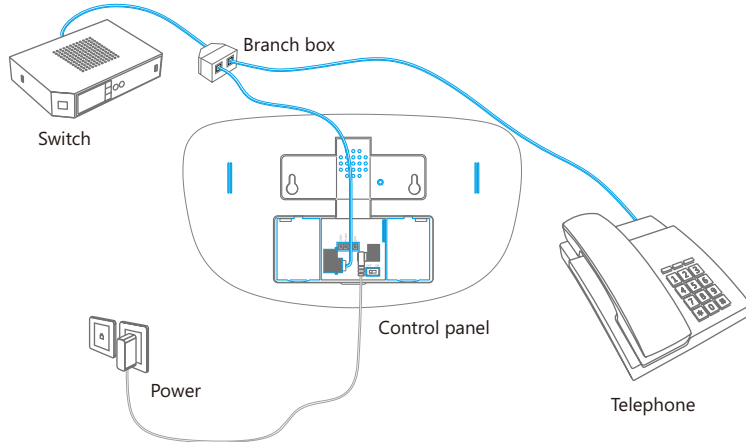


Preparation before Use

This alarm control panel features a dual communicator of both PSTN and GSM alarm system, If there is an alarm, it will auto dial preset phone numbers either through landline or through GSM network.

Connect PSTN Land Line

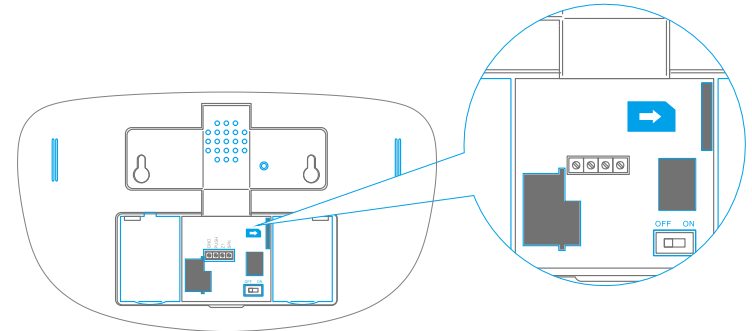
1. Connect the smaller connector of provided telephone cable to the PSTN land line interface at the back side of the panel.
2. Connect the other end of the telephone cable to the signal output provided by PSTN land line operator



Insert a SIM Card

This step can be ignored if GSM function is not applied.

Insert a GSM SIM card into the card slot according to the mark and lock it.



Note:

Please make sure the GSM SIM card doesn't require any PIN code, for more information, please contact your local carrier.


Power on

1. Plug the AC adapter into a wall outlet
2. Plug the output connector of AC adapter into the adapter Jack of control panel
3. Turn the power switch to on

Control Panel Operation

Alarm Control


Arm (Away Arm)

Press the [Arm ] button on the control panel, the system enters arm state when one beep is heard and the arm LED Indicator lights on.

Note: If Entry/Exit Delay is activated, all zones except the 24-hour zone will enter arm state after the set delay time.




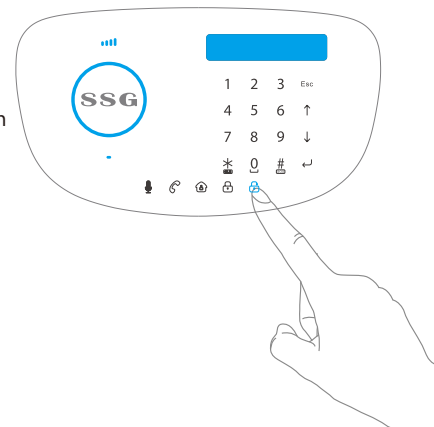
Home Mode (Part Arm)

Press the [Home Mode ] button on the control panel, the system enters home mode when one beep is heard and the home mode LED Indicator lights on. All the normal sensor are armed except the home mode sensors which are disarmed, so that user can move freely at home.




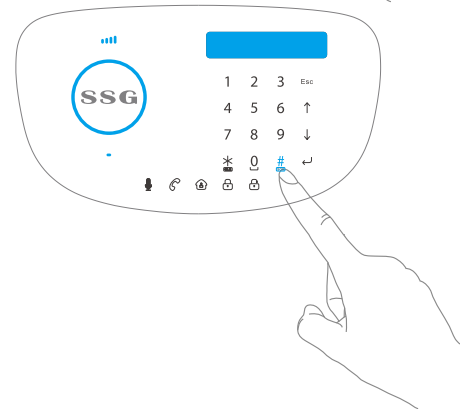
Disarm

Input user code (Default: 1234) or admin code (Default: 123456) first then press the [Disarm ] button, the system enters disarm state when one beep is heard and the disarm LED Indicator lights on.



Emergency Call

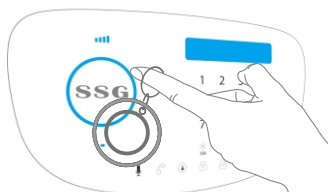
When the LCD display is activated, Hold the [] button for 3 seconds the system goes into emergent alarming state with siren hooting, meanwhile the panel will auto dial pre-stored alarm phone numbers



Access Control System

The control panel has a RFID reader for unlocking the electronic door lock by disarming the system. Just place the RFID tag close to the RFID reader, the blue LED indicator flashes once.

The system is disarmed and the electronic door lock is opened (If connected).



Make Phone Calls

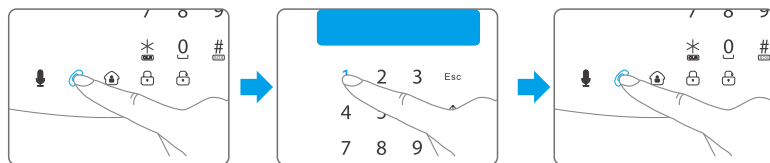
The control panel has a built-in communication module. If the PSTN land line is connected or SIM card is connected properly, and the credit is enough, you can use the panel to make calls.

(a)Through SIM card

When the control panel is in disarm or home mode state, press [Call] button, Type the phone number you wish to call and press [Call] .

(b)Through landline

When the control panel is in disarm or home mode state, press [Call] button, Type the phone number you wish to call and press [Enter] button.

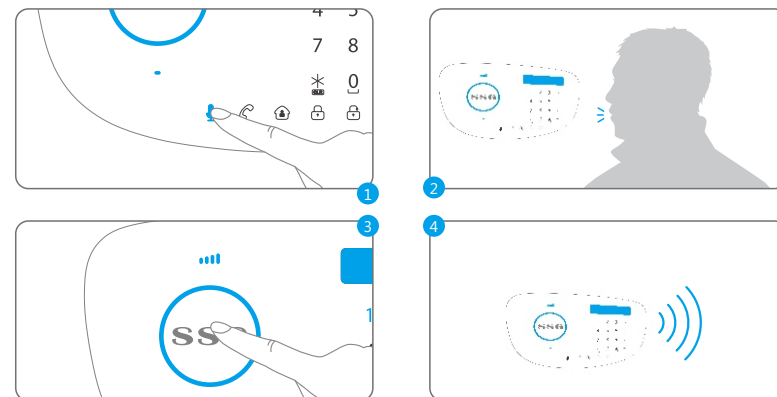


If you input wrong numbers, press [Esc] button and input again. Press [Esc] button to cancel dialing or press [Call] button to end a conversation.

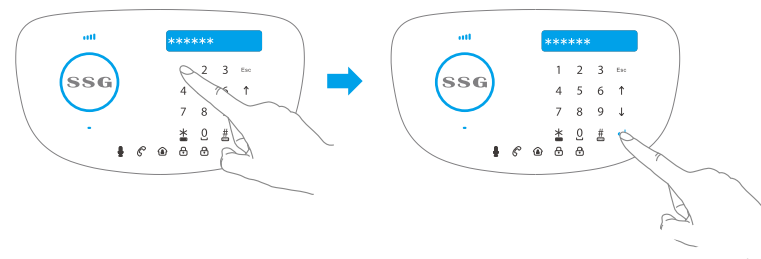
Note: If control panel is connected with extension line, 0# or 9# need to be added in front of the phone number when making phone calls. if the land line is unavailable, system will switch to GSM network, user can make phone calls by inputting phone number directly without 0# or 9#.

Voice Memo

Press the [Record Voice Memo] button for 1 second to record 10 seconds voice message. The circle Play Voice Memo will be flashing to remind you. Users can touch the center of circle to listen to the voice memo. The LED indicator blacks out when the voice memo has been played. Replay by touching it again. The latest voice memo will cover the former message.



Function Setting



Input the admin code (Default: 123456), and then press [Enter] to enter setting menu.

↑ Up Enter Confirm
↓ Down Esc Back to last step

LCD display menu

In the table below, each column represents a menu or a sub menu. Each menu or sub menu will be displayed on one of the two lines of LCD display. On the LCD display, the current menu, sub menu or setting is shown on the line at the bottom, while the previous menu or sub menu is shown on the line at the top.

Navigate to select the setting you wish to modify with the keys "↓" or "↑", and enter each menu or sub menu by pressing "Enter" button.

How to use the touch keypad

- * :Delete
- ↓ :Down
- ↑ :Up
- Enter :Confirm/select
- Esc :Back/Cancel

Main Menu	Sub menu 1	Sub menu 2	Sub menu 3
Phone numbers	Phone [1-5] is SMS Num [1-5] is CMS Num [1-2] is Speed dial Num	-	-
Accessories	Remote	Add a new	*Please connect within 30s
		Delete all?	1=YES 0=NO
		Delete one	Enter 01-30
	RFID Tag	Add a new	*Please connect within 30s
		Delete all?	1=YES 0=NO
		Delete one	Enter 01-99
	Wireless sensors	Add a new	*Please connect within 30s
		Delete all?	1=YES 0=NO
		Delete one	Enter 01-99
	Test mode	-	-
System settings	Date and Time	20xx-xx-xx xx:xx	-
	Entry Exit delay	Entry delay	* 0-300s
		Exit delay	* 0-300s

Main Menu	Sub menu 1	Sub menu 2	Sub menu 3
System settings	Auto arm/disarm	Auto arm time	00:00
		Auto disarm time	00:00
		On or Off	-
	Control by phone	On or Off	-
	Line cut alarm	On or Off	-
	GSM fail tip	On or Off	-
	Keypad tones	On or Off	-
	Access code	Admin code	6 digits:123456
		User code	4 digits:1234
		Duress code	4 digits:0000
		Open door code	4 digits:8888
	Ring time	0-9	-
	Siren setup	Wired siren	ON or OFF
		Siren alert time	0-9 min
		Built-in siren	ON or OFF
		Wireless siren	ON or OFF
	User ID	4 digits	-
	Arm Upload	ON/OFF	-
	Disarm Upload	ON/OFF	-
	Call recycle	0-9	-
	Backlight time	0-300s	-
	Reset	1=Yes 0=NO	-
	About	-	-
	Language	English, French German, Spanish Finnish, Swedish Norwegian, Danish Italian, Chinese	-
History	1-150	-	-

Settings

Before enter into setting menu, please disarm the system first.
Type the Admin password and then press "Enter" button on the control panel to enter into setting menu.

Important: The default language of this alarm system is English, you can change in the [Language] menu of [System Setting]

1. Alarm Phone Number Setting

User can store 5 alarm phone numbers 5 SMS alert phone numbers and 2 CMS numbers.

Add phone number

- Log on setting menu, press [↓] or [↑], choose "Phone Numbers", press [Enter].
- press [↓] or [↑], choose the group of phone number you want to add, press [Enter].
- Input alarm phone numbers, press [Enter] to save.

Delete phone number

- Log on setting menu, choose "Phone Numbers", press [Enter].
- press [↓] or [↑], choose the group of phone number you want to delete, press [Enter].
- Press * to delete, press [Enter] to confirm.

2. Add/delete accessories

(1) Add/delete remote&keypad

Add

- Log on setting menu, press [↓] or [↑], choose "Accessories", press [Enter].
- press [↓] or [↑], choose "Remote", press [Enter].
- press [↓] or [↑], choose "Add a new", press [Enter].
- Press any button on the remote control within 30s, the control panel will

sound a beep, and the LCD will show "Add OK, Remote 01-30". if the remote already has been added before, the control panel will sound 2 beeps and the LCD will show "already exists"

* When you add more remote control, the remote control number will add 1 automatically from 01 to 30.

Delete

Delete a remote control & keypad

- Log on setting menu, press [↓] or [↑], choose "Accessories", press [Enter].
- press [↓] or [↑], choose "Remote", press [Enter].
- press [↓] or [↑], choose "Delete one", press [Enter].
- Enter the remote control number (01-30) you want to delete, the control panel will sound a beep if delete succeeded.

Delete all remote control & keypad

- Log on setting menu, press [↓] or [↑], choose "Accessories", press [Enter].
- press [↓] or [↑], choose "Remote", press [Enter].
- press [↓] or [↑], choose "Delete all", press [Enter].
- Enter "1" delete all the added remote control, the control panel will sound a beep if delete succeeded.

(2). Add/delete RFID tag

Add

- Log on setting menu, press [↓] or [↑], choose "Accessories", press [Enter].
- press [↓] or [↑], choose "RFID tag", press [Enter].
- press [↓] or [↑], choose "Add a new", press [Enter].
- Swipe the RFID tag on the RFID reader within 30s, the control panel will sound a beep, and the LCD will show "Add OK, RFID tag 01-50". if the RFID tag already has been added before, the control panel will sound 2 beeps and the LCD will show "already exists"

* When you add more RFID tags, the RFID tag number will add 1 automatically from 01 to 50.

Delete

Delete a RFID tag

- a) Log on setting menu, press [↓] or [↑], choose "Accessories", press [Enter].
- b) press [↓] or [↑], choose "RFID tag", press [Enter].
- c) press [↓] or [↑], choose "Delete one", press [Enter].
- d) Enter the remote control number (01-50) you want to delete. The control panel will sound a beep if delete succeeded.

Delete all remote control & keypad

- a) Log on setting menu, choose "Accessories", press [Enter].
- b) press [↓] or [↑], choose "RFID tag", press [Enter].
- c) press [↓] or [↑], choose "Delete all", press [Enter].
- d) Enter "1" delete all the added RFID tag, the control panel will sound a beep if delete succeeded.

(3) Add/delete wireless sensors

Add

- a) Log on setting menu, press [↓] or [↑], choose "Accessories", press [Enter].
- b) press [↓] or [↑], choose "wireless sensor", press [Enter].
- c) press [↓] or [↑], choose "Add a new", press [Enter].
- d) press [↓] or [↑], choose the type of sensor (Normal sensor/home sensor/delay sensor/24 hour sensor), press [Enter].
- e) Activate the wireless sensor within 30s, the control panel will sound a beep, and the LCD will show "Add OK, RFID tag 01-50". If the wireless sensor already has been added before, the control panel will sound 2 beeps and the LCD will show "already exists".

What is Normal Sensor/Home sensor/24 hour sensor/Delay sensor?

Normal Sensor: In arm mode, when normal sensors are triggered, system will alarm. In disarm mode, when normal sensors are triggered, system will not alarm.

Home Sensor: In home mode, only normal sensors will be triggered and home sensors will not be triggered while alarming, this will allow user to move freely at home.

24 Hour Sensor: Regardless the system is armed or disarmed, when 24 hour sensors are triggered, system will alarm at once.

Delay Sensor: In arm mode, when delay sensors are triggered, system will alarm after the entry delay time you have set. (please refer to the Entry delay instruction on page 32).

*When you add more wireless sensors, the wireless sensor number will add 1 automatically from 01 to 50.

Delete

Delete a wireless sensor

- a) Log on setting menu, press [↓] or [↑], choose "Accessories", press [Enter].
- b) press [↓] or [↑], choose "wireless sensor", press [Enter].
- c) press [↓] or [↑], choose "Delete one", press [Enter].
- d) Enter the wireless sensor number (01-50) you want to delete. The control panel will sound a beep if delete succeeded.

Delete all wireless sensors

- a) Log on setting menu, press [↓] or [↑], choose "Accessories", press [Enter].
- b) press [↓] or [↑], choose "wireless sensor", press [Enter].
- c) press [↓] or [↑], choose "Delete all", press [Enter].
- d) Enter "1" delete all the added wireless sensor, the control panel will sound a beep if delete succeeded.

(4). Test mode

Test mode enables you to check whether the remote/RFID tag/wireless sensor has been added successfully.

- a) Log on setting menu, press [↓] or [↑], choose "Accessories", press [Enter].
- b) press [↓] or [↑], choose "test mode", press [Enter].
- c) Trigger the accessories you have added before,

3.System settings

(1)Date and Time

- a)Log on setting menu,press [↓] or [↑] ,choose "System setting", press [Enter].
- b)press [↓] or [↑] , choose "Date and Time", press [Enter].
- c)press [↓] or [↑] to move the pointer ,input current date and time, press [Enter] to save.

(2)Entry/Exit delay

Entry delay

Entry delay gives you time to disarm the system upon entry, before an alarm occurs. only the delay sensors are invalid, the non delay sensors will be triggered normally.

- Log on the menu,press [↓] or [↑] , choose "System Settings", press [Enter].
- a)press [↓] or [↑] , choose "Entry Exit Delay", press [Enter].
 - b)press [↓] or [↑] , choose "Entry Delay", press [Enter].
 - c)Input time for entry delay; press [Enter] to save.

Exit delay

Exit delay gives you time to exit after arming.

- a)Log on the menu,press [↓] or [↑] , choose "System Settings", press [Enter].
- b)press [↓] or [↑] , choose "Entry Exit Delay", press [Enter].
- c)press [↓] or [↑] , choose "Exit Delay", press [Enter].
- d)Input time for exit delay; press [Enter] to save.

*Entry/exit delay time is calculated in seconds; default is 0 second (off); the range is 0-300 seconds.

(3)Auto Arm/Disarm

You can set up the system to arm/disarm automatically at a defined time every day.

Timing to Arm

- a)Log on the menu,press [↓] or [↑] , choose "System Settings", press [Enter].
- b)press [↓] or [↑] , choose "Auto Arm/Disarm", press [Enter].
- c)press [↓] or [↑] , choose "Auto Arm Time", press [Enter].
- d)Input exact time for arming; press [Enter].

Timing to disarm

- a)log on the menu,press [↓] or [↑] , choose "System Settings", press [Enter] to confirm.
- b)press [↓] or [↑] , choose "Auto Arm/Disarm", press [Enter].
- c)press [↓] or [↑] , choose "Auto Disarm Time", press [Enter].
- d)Input exact time for disarming; press [Enter].

(4)Control by phone call

Method 1

When an alarm is triggered ,the control panel will dial the stored phone numbers ,after picked up ,you can follow the voice promotion to remote control the panel

Method 2

- a) Dial the telephone number of control panel ,either the number of SIM card in the control panel or the number of landline to which the control panel is connected, after got through ,the voice promotion will guide you to enter access code.
- b) Enter access code(user code),press "#" to confirm.
- c) Follow the voice promotion to remote control the panel.

Remote Phone Control Instruction Table

Phone Buttons	Function	Explanation
Press [1]	Arm the system	Arm succeed
Press [0]	Disarm the system	Disarm succeed
Press [*]	Monitor on site	Press [*] to prolong monitor time
Press [9]	Turn on siren	Deter the intruders
Press [6]	Turn off siren	Siren stops ringing
Press [#]	To exit Remote Phone Control	Or hang up the phone

- a) Log on the menu, press [↓] or [↑], choose "System Settings", press [Enter].
- b) press [↓] or [↑], choose "Control by phone", press [Enter].
- c) press [↓] or [↑], choose "on" to turn on this function, choose "off" to turn off this function, press [Enter] to confirm

5) Line cut alarm

When line cut alarm function is on, the control panel will alarm once the PSTN land line is cut or pulled out even if the built-in siren was set to mute.

Turn on/off Line cut alarm

- a) Log on the menu, press [↓] or [↑], choose "System Settings", press [Enter]
- b) press [↓] or [↑], choose "Line cut alarm", press [Enter].
- c) press [↓] or [↑], choose "on" to turn on this function or choose "off" to turn off this function, press [Enter] to confirm.

6) GSM fail tip

Notification of GSM signal.

- a) Log on the menu, press [↓] or [↑], choose "System Settings", press [Enter]
- b) press [↓] or [↑], choose "GSM fail tip", press [Enter].
- c) press [↓] or [↑], choose "on" to turn on this function or choose "off" to turn off this function, press [Enter] to confirm.

7) Keypad Tones

Activate or deactivate the sound when typing on the keypad of control pane

- a) Log on the menu, press [↓] or [↑], choose "System Settings", press [Enter]
- b) press [↓] or [↑], choose "Keypad Tones", press [Enter].
- c) press [↓] or [↑], choose "on" to turn on this function or choose "off" to turn off this function, press [Enter] to confirm.

8) Access code

The control panel has 3 types of access code, user code, admin code and duress code. Please change all codes before using.

Admin Code

Your admin code enables you to enter setting menu.

- a) Log on the menu, press [↓] or [↑], choose "System Settings", press [Enter].
 - b) press [↓] or [↑], choose "Access Code", press [Enter].
 - c) press [↓] or [↑], choose "Admin Code", press [Enter].
 - d) LCD display will show "Input 6 Digits", then input 6 digits for code, press [Enter].
- (Default Admin Code: 123456) Input the new admin code, press [Enter].

User Code

Your user code enables you to arm/disarm the system on control panel, and it is the access code requested when call the alarm control panel.

- a) Log on the menu, press [↓] or [↑], choose "System Settings", press [Enter].
 - b) press [↓] or [↑], choose "Access Code", press [Enter].
 - c) press [↓] or [↑], choose "User Code", press [Enter].
 - d) LCD display will show "Input 4 Digits", then input 4 digits for code, press [Enter].
- (Default User Code: 1234) Input the new user code, press [Enter].

Duress Code

In case of emergency, when user is requested to disarm the system by force, it's recommended to use the duress code to disarm the alarm system. The panel will silently dial the stored telephone numbers.

- a) Log on the menu, press [↓] or [↑], choose "System Settings", press [Enter].
 - b) press [↓] or [↑], choose "Access Code", press [Enter].
 - c) press [↓] or [↑], choose "Duress Code", press [Enter].
 - d) LCD display will show "Input 4 Digits", then input 4 digits for code, press [Enter].
- Default Duress Code: 0000) Input the new duress code, press [Enter].

Open Door Code

This code is used to open the connected electronic lock.

- a) Log on the menu, press [↓] or [↑], choose "System Settings", press [Enter].
- b) press [↓] or [↑], choose "Access Code", press [Enter].

- c)press [↓] or [↑], choose "Open Door Code", press [Enter].
d)LCD display will show "Input 4 Digits", then input 4 digits for code, press [Enter].
Default Duress Code: 8888)Input the new Door Open Code, press [Enter].

9)Ring times

This function enables you to determine the number of times the control panel will ring before taking the phone call.

- a)Log on the menu,press [↓] or [↑] , choose "System Settings",press [Enter].
b)press [↓] or [↑] , choose "Ring time", press [Enter].
c)Input 0~9,press [Enter] to save

10)Siren setup

Wired siren

Wired siren is connected to the control panel by wire.

Turn On/Off Wired Siren

- a)Log on the menu,press [↓] or [↑],choose "System Settings", press [Enter].
b)press [↓] or [↑] , choose "Siren Setup", press [Enter].
c)press [↓] or [↑] , choose "Wired Siren", press [Enter].
d)press [↓] or [↑] , choose "On" or "Off" to turn the wired siren to ON or Off, press [Enter].

Built in siren

Built in siren is inside of control panel.

Turn On/Off built in siren

- a)Log on the menu,press [↓] or [↑],choose "System Settings", press [Enter].
b)press [↓] or [↑] , choose "Siren Setup", press [Enter].
c)press [↓] or [↑] , choose "Built in siren", press [Enter].
d)press [↓] or [↑] , choose "On" or "Off" to turn the built in siren to ON or Off, press [Enter].

Wireless siren

Wireless siren is connected to control panel through radio.

Turn On/Off wireless siren

- a)Log on the menu,press [↓] or [↑],choose "System Settings", press [Enter].
b)press [↓] or [↑] , choose "Siren Setup", press [Enter].
c)press [↓] or [↑] , choose "wireless siren", press [Enter].
d)press [↓] or [↑] , choose "On" or "Off" to turn the wireless siren to ON or Off, press [Enter].

Set ringing time for all sirens

- a)Log on the menu,press [↓] or [↑],choose "System Settings", press [Enter].
b)press [↓] or [↑] , choose "Siren Setup", press [Enter].
c)press [↓] or [↑] , choose "Siren Alert Time", press [Enter].
d)Input the ringing time, press [Enter].

*Siren ringing time is calculated in minutes, default setting is 3 mins ,if you set the time to 0,the siren will not ring out.

(11)Connect to CMS

Please ignore this step if users don't need to connect to CMS center.

This alarm control panel is full compatible with Contact ID ,when connected to CMS center, control panel will upload contact ID to CMS center automatically once the system is triggered.

First you sure store the CMS phone number and User ID to the alarm control panel ,which are provided by CMS.

Please refer to the instruction of alarm phone number setting for setting the CMS phone number.

User ID setting

- a)Log on the menu; press [↓] or [↑],choose "System Settings", press [Enter].
b)press [↓] or [↑] ,choose "User ID", press [Enter].
c)LCD display will show "Input 4 Digits", input 4 digits user ID, press [Enter].

Upload Arm/ Disarm Report to CMS Center

When this function is enabled, all arm/disarm reports will be uploaded automatically to CMS so that CMS center can know the status of the alarm system.

Turn On/Off Arm/Disarm upload

- a)After the User ID is set, Log on the menu; press [↓] or [↑], choose "System Settings", press [Enter].
- b)press [↓] or [↑], choose "Arm upload" or "disarm upload", press [Enter].
- c)press [↓] or [↑],choose "On" or "Off" to turn Arm/Disarm upload to On or Off.

(12)Call recycle

The call recycle enables you to set the number of times the control panel attempts to dails the stored alarm phone numbers.

- a)Log on the menu, press [↓] or [↑], choose "System Settings", press [Enter].
- b)press [↓] or [↑], choose "Call recycle", press [Enter].
- c)Input the number[0-9], press [Enter].

(13)Backlight time

User can set standby time of the backlight from 0 to 300s.

- a)Log on the menu, press [↓] or [↑],choose "System Settings", press [Enter].
- b)press [↓] or [↑],choose "Backlight Time", press [Enter].
- c)Input time for backlight time; press [Enter].

Backlight time is calculated in seconds; default is 30 seconds.

(14)Reset

- a)Log on the menu,press [↓] or [↑], choose "System Settings", press [Enter].
- b)press [↓] or [↑], choose "Reset", press [Enter] to reset the system to default setting.

Note: All system settings will be restored to default setting. Reset will not delete the accessoriesthat has already coded to the control panel.

(15)Language

By default the language of alarm control panel is set to English.

- a)Log on the menu, press [↓] or [↑], choose "System Settings", press [Enter].
- b)press [↓] or [↑], choose "Language",press [Enter]
- c)Choose the language you wish to change to ,press [Enter] to save.

4.History

Users can check the event logs freely,150 event logs are traceable.

- a)Log on the menu,press [↓] or [↑], choose "History", press [Enter].
- b)press [↓] or [↑] to check the event logs.

SMS Operation

User can send SMS command to control and configure the control panel.

Important:

1. only the stored phone number can control and configure the control panel.
2. The language of SMS command must be the same with the control panel's language.

SMS command table

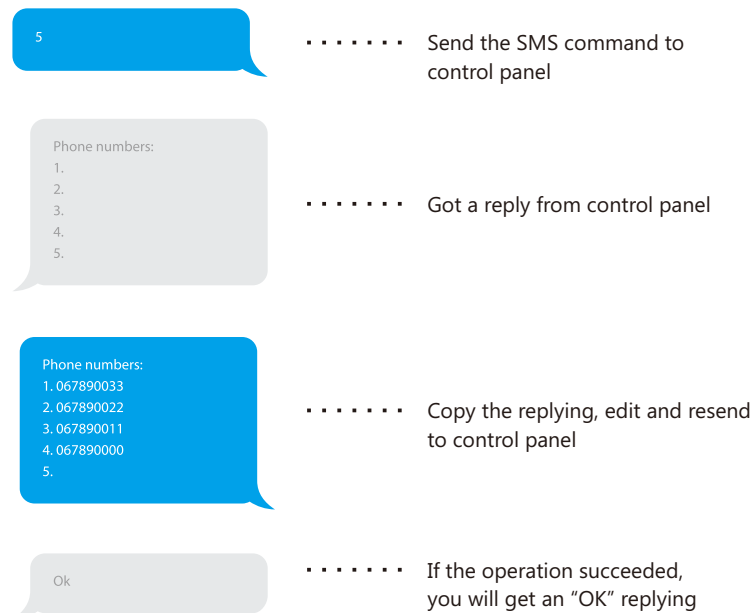
SMS command	Description	Reply from control panel
0	Disarm the system	System disarmed
1	Arm the system	System armed
2	Set the system to home mode	System in home mode
3	Leave a voice message	-
4	Two way communication	-
00	Check the system state	System:xx Power:xx
5	Store phone numbers	Phone numbers: 1. 2. 3. 4. 5.
6	Store SMS number	SMS numbers: 1. 2. 3. 4. 5.
ZONExx:--	Rename zone	Note: "xx" is the zone NO. 1-99 "--" is the zone name
RFIDxx:--	Rename RFID	Note: "xx" is the RFID tag NO. 1-50 "--" is the RFID tag name

11	Set Entry/Exit delay time	Entry delay time(0-300sec):0 Exit delay time(0-300sec):0
12	Set siren alert time	Siren volume (0 mute,1High): Siren ringing time(1-9min):3
13	Modify disarm password	Disarm password(4 digits):8888
0000	Reset system to default setting	Ok
0001-0014	Change language	Ok

When the control panel received the SMS command, it will reply a SMS ,the replying of which marked in blue in the command table are the standard format, you could edit it and resend it to control panel.

Here we give 2 examples for reference.

Store alarm phone numbers:



Rename zone name

ZONE05:Entry door sensor

..... Send the SMS command to control panel

Ok

..... If the operation succeeded, you will get an "OK" replying

Change language

0001

..... Send the SMS command to control panel

Ok

..... If the operation succeeded, you will get an "OK" replying

Send the corresponding language code to control panel, then the control panel will change to the language you want to set to. below is the code list for all languages.

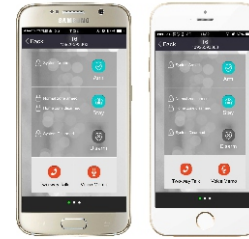
0001 English	0006 Italian
0002 French	0007 Swedish
0003 Russian	0008 German
0004 Danish	0009 Spanish
0005 Dutch	0010 Finnish

APP Operation

This system can be controlled and configured by smart phone App.

Download the APP

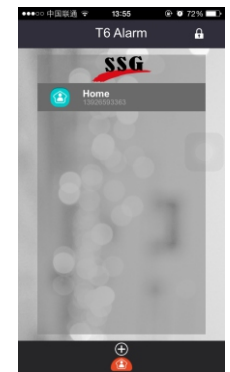
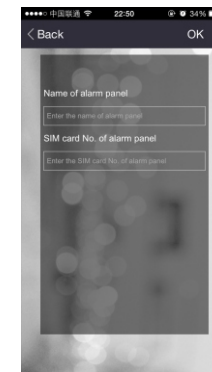
Search keyword "T6 alarm" in APP store or Google Play to down the App.



Add a control panel

Launch the App, tap the add button on the bottom, then enter the name of control panel and the SIM card number of control panel, last tap "OK" to save.

You can add more control panels to the App following the steps above.



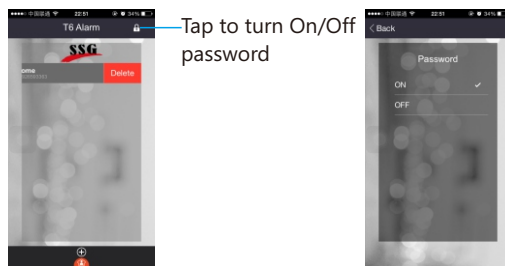
Tab this button to add a control panel

Delete/Edit

You can swipe left the added control panel to delete or tap the control panel to edit.

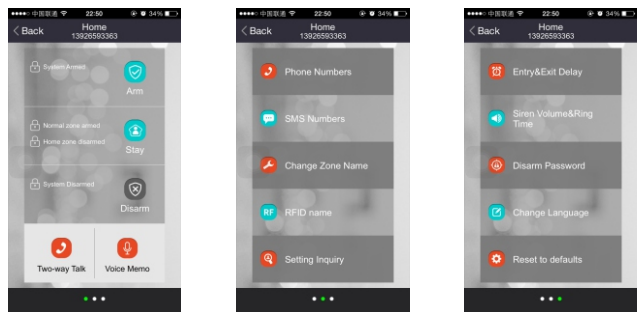
Turn On/Off password

You can tap the lock button to turn On/Off the password, after that you should enter password to logon.



Operation guidance

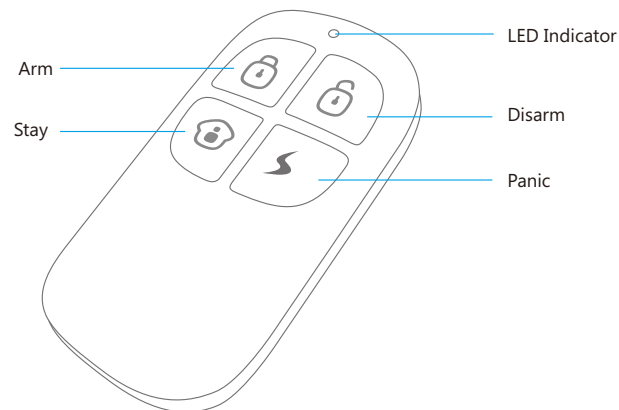
1. Tap the alarm control panel you added to enter into the main page of APP ,you can slide between the pages.
2. Under the first page ,you can Arm ,Disarm, Home Arm the sytem ,and send a voice memo or Two way talk request to alarm panel.
3. Under the second page ,you can program the phone number and SMS number of alarm ,change the zones name and RFID tag notification name ,and send a status inquiry command to alarm panel
4. Under the third page ,can you set the Entry&Exit delay time ,build-in siren volume and ring time ,modify the disarm password ,change the language and reset the alarm panel to factory setting.



Accssories

Remote control

The remote control is dainty and delicate, easy to carry. It can be attached to your key ring, or just put into your pockets or purses. When you are about to exit or entry the house, you can use it to arm or disarm the system. In case of the panic button, the alarm will be activated immediately



Arm

Press the [Arm] button, the system enters arm state when one beep is heard and the arm LED on the control panel is on.

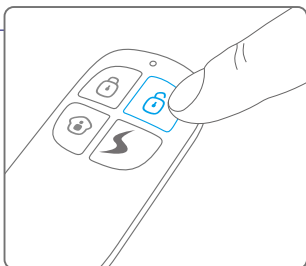
Note: If Exit Delay is activated, all zones except the 24-hour zone will enter arm state after the set delay time.



Disarm

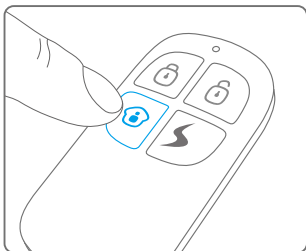
Press the [Disarm] button on the remote control, the system enters disarm state when two beeps are heard and the disarm LED on the control panel is on.

When alarm is activated, the siren will hoot. Press the [Disarm] button, the system is disarmed. But the LED indicator of triggered zone keeps flashing for further checking. Press [Disarm] button again, the alarming zone indicator goes out.



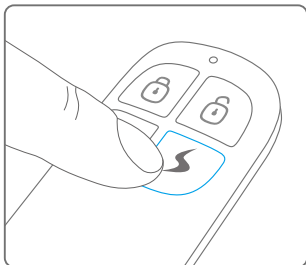
Home Arm (Part Arm)

Press [Stay] button on the remote control, the system enters home mode when one beep is heard and the home mode LED is on. All the normal sensors are armed except the home mode sensors which are disarmed, so that users can move freely at home.



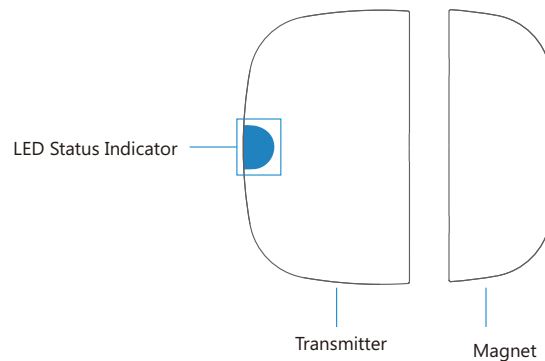
Panic button

Whenever you press the panic button on the remote control, the system will alarm immediately



Door/Window Contact

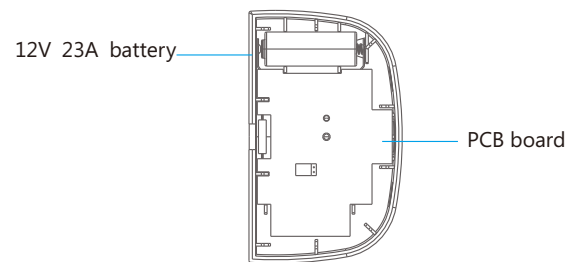
The window/door sensor can be installed on doors, windows, and any other objects that can open and close. The sensor transmits signals to the control panel when a magnet mounted near the sensor is moved away.




LED Indication

LED	Meaning
Blinks once	Door/Window contact is triggered

PCB Layout



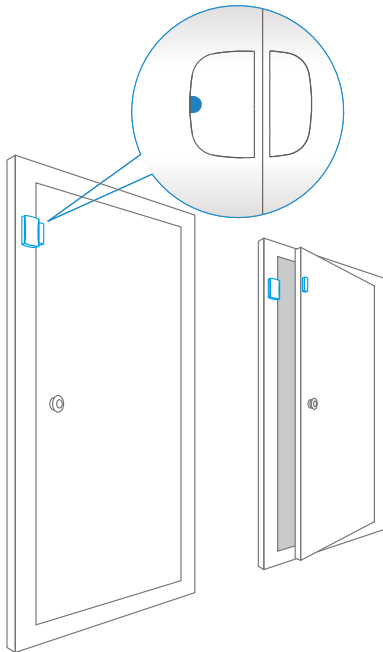
Test

1. Press the back cover and slide down to remove the back cover
2. Remove the insulating strip. The contact works immediately
3. Press the [Arm ] button on the remote control. The system switches to the arm status. Separate the transmitter and magnet. The LED is on and the panel alarms. It indicates that the sensor works properly.

Note: There are triangle marks on the side of the transmitter and magnet. Make sure the triangle marks face each other and within the range of 1 cm.

Installation

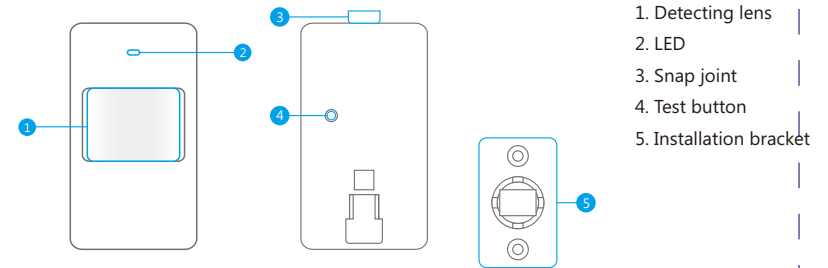
Mount the transmitter on the frame and the magnet on the door or window. Make sure the magnet is on the right side of the transmitter. Secure the transmitter and magnet on the desired locations with double-sided tapes or screws.



Note: Make sure the transmitter and magnet works properly on the desired locations. If a metal door is installed, place spacers under the transmitter and magnet. Do not apply the contact to a rolling shutter. Purchase dedicated contacts for rolling shutters when necessary.

PIR Motion Detector

The detector adopts digital logic control processing technology and intelligent analysis algorithm, effective resolution of interfering signal and human movement signal, preventing false alarm. It features automatic temperature compensation and resistance to flow technology, adapting to environmental and temperature change. It can detect human movement within the 8-meter cone space, suitable for halls, hallways, etc.



LED Indication

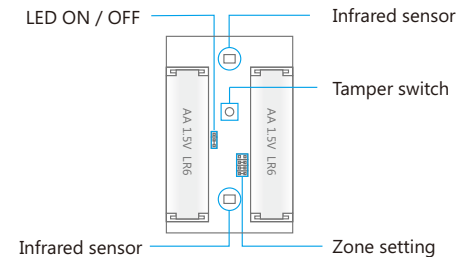
Blinks continuously: Under self-testing state.

Blinks once: Intruder is detected.

Blinks twice: 3 minutes testing is finished, enters power saving mode.

Blinks once per 3 seconds: Low battery indication, LCD shows: Sensor 1-50(Sensor Name) low battery, please change the batteries immediately

PCB Layout



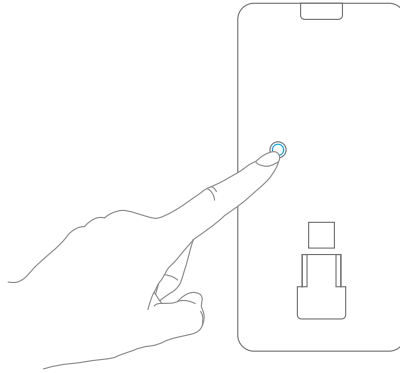
Note: If the detector is disassembled, system will sound immediately, and LCD shows "Sensor 1-99(Sensor Name) Sensor Tamper".

Working Mode

Testing mode

After self-testing, the detector enters testing mode, and detects once every 10 seconds. After 3 minutes, the LED blinks twice, and the detector enters power saving mode.

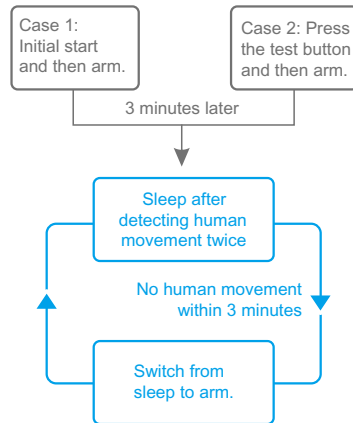
Hold the test button and load the battery, then release the test button, the detector stands in testing mode, it keeps detecting once every 10 seconds. Exits this status by reloading the battery without holding the test button.



Power saving mode

The product features power-saving design. If the detector detects human movement twice in 3 minutes, it will switch to the sleeping state to save power. At this time, the LED will not blink and no alarm. After no movement within the next 3 minutes, the detector switches back to the working state automatically.

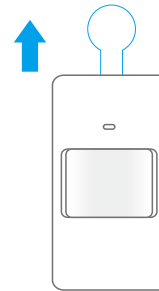
Note: After the detector is in the sleeping state, ensure no human movement within 3 minutes; otherwise, the detector remains sleeping. In the sleeping state, it is recommended that you leave the room after arming the system. Ensure no human movement in 3 minutes. Then, go into the room, the system alarms immediately.



Test

1. Remove the insulating strip

Press the buckle to open the back cover. Remove the insulating strip. After 30-second self-testing, the detector switches to the testing mode.



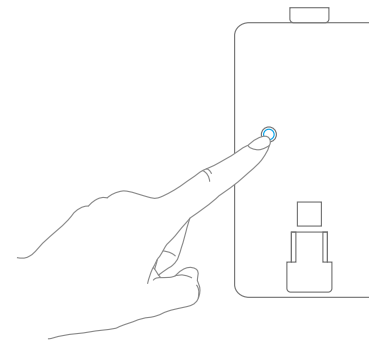
2. Arm

Press the [Arm] button on the remote control. The system is in the armed state.



3. Trigger the alarm

Keep pressing the test button at the back until the siren sounds.

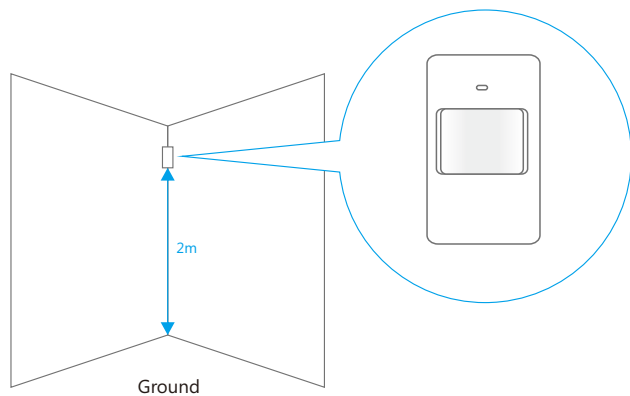


Note: The testing mode sustains for 3 minutes. Then, the LED blinks twice, indicating the detector is in the power saving mode.

Installation

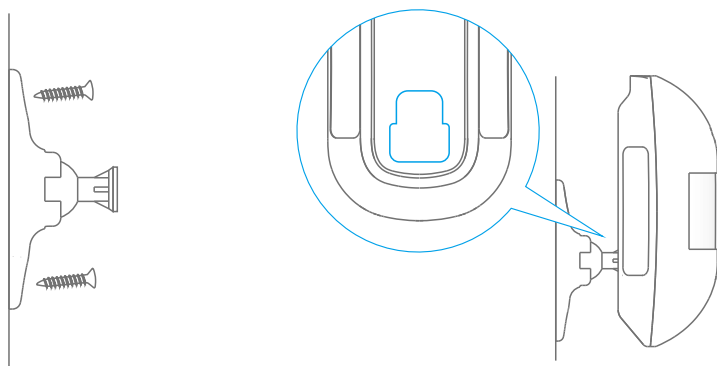
1. Choose installation place

It is recommended to mount it at the height of 2m from the ground. (For installation notices, please see page 21-22)



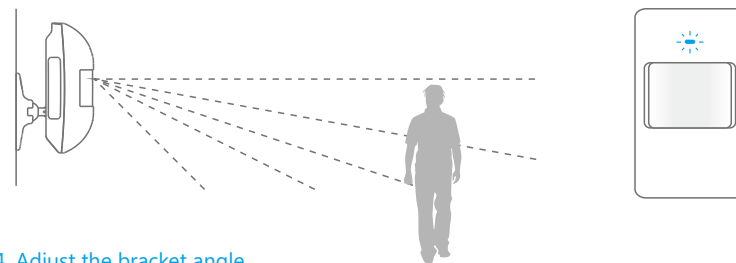
2. Fix the detector

Fix the installation bracket on the wall with screws, and then fit the groove at the back of the detector on the bracket.



3. Testing

Press the test button on the back of the detector, or walk in the detection scope and watch the LED indication to make sure the detector is working.



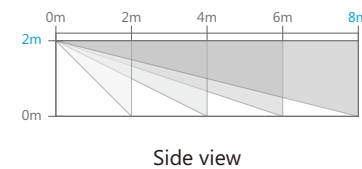
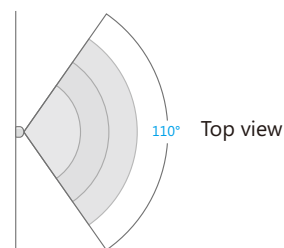
4. Adjust the bracket angle

Adjust the bracket angle to achieve the best detection effect.



Note: If pet-immune function is used, please do not adjust the angle up or down, but keep it parallel with the wall.

Detection Scope

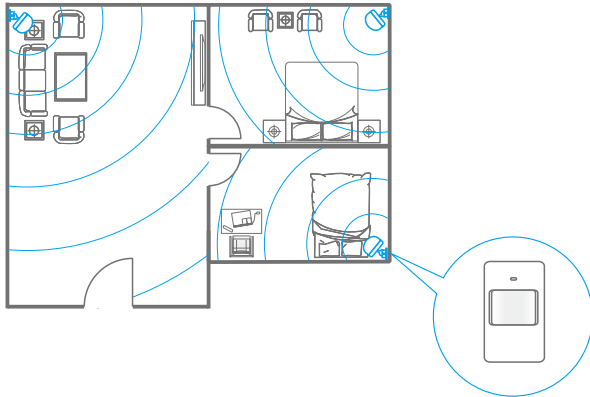


Installation Notices

Pay attention to the following during installation:

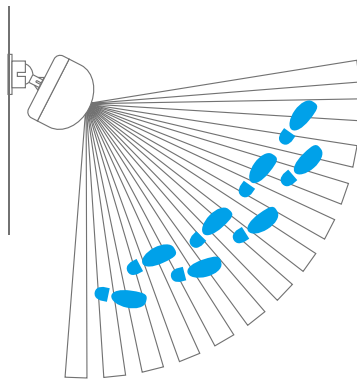
1. Mount the detector to a location close to the entry or exit

The detector aims at preventing intrusion. Detecting human movement at the entry or exit is critical for security



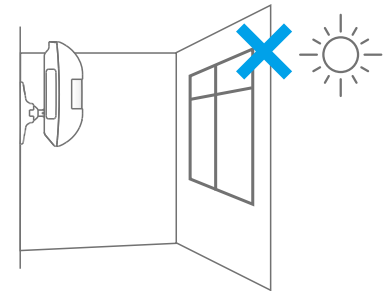
2. Mount the detector in a proper angle

The installation angle affects sensitivity directly. The sensitivity is optimal when the walk direction is vertical to the infrared direction. Choose the best location and angle according to the actual situation and detection scope diagram.



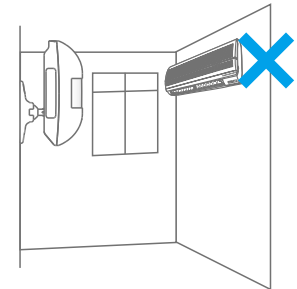
3. Avoid facing to glass windows or doors

Strong light interferes with detection sensitivity. In addition, complicated situations, such as traffic flow, stream of people, also should be avoided.



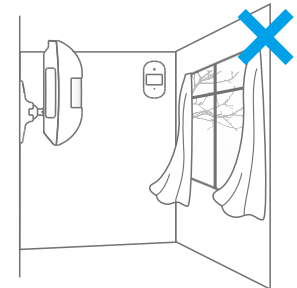
4. Avoid facing or positioning close to heat

Avoid facing or positioning close to heat sources such as heat extraction units, heaters, air conditioner, microwave oven, refrigerator, which may cause false triggering.



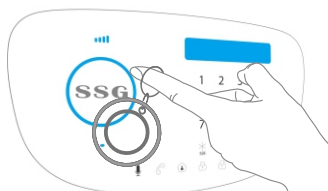
5. Avoid facing to swinging objects

Swinging objects may also trigger false triggering. Besides, if there are two detectors covering the same scope, adjust the locations to prevent cross-interference.



RFID tag

RFID tag is used to disarm your system or unlock the electronic lock. the control panel will send a SMS notification to the first stored SMS phone number, when it is disarmed by registered RFID tag. the RFID tag name (notification content) can be defined by yourself.



Additional siren

The control panel already features a 100dB built in siren, it also supports wired/ wireless indoor/outdoor siren.

Maintenance

The alarm system features unique and brilliant design and craftwork. Please use it with caution. The following suggestions will help prolong the service life of the system.

- 1 Keep this product and accessories out of children's reach.
- 2 Keep the product and accessories dry. Rainwater, moisture and liquids are likely to contain minerals that will corrode electronic circuits.
- 3 Do not use or store the alarm system in dusty or dirty places; otherwise it may damage the electronic components.
- 4 Do not expose the alarm system to high temperature. High temperatures can shorten the life of electronic components, damage batteries, and cause melting and deformation of plastic parts.
- 5 Do not store the alarm system in cold areas. Otherwise, when the temperature of the alarm system rises to the normal level, moisture appears inside, damaging PCB.
- 6 Test the alarm system regularly and perform troubleshooting in time.
- 7 Check the built-in batteries of accessories regularly. If the batteries are low, replace with new ones.
- 8 The alarm system requires uninterrupted power supply for working or standby. Therefore, you need to connect the AC adapter to a reliable power outlet.
- 9 Avoid placing the control panel and sirens in bedrooms or offices, so as not to disturb your rest or work.
- 10 It is recommended to cut off the power if the system is not used for long time.
- 11 If the alarm system is covered with dirt, wipe off the dirt with soft cloth or tissue. For stains, apply diluted alkaline detergent to soft cloth, wring the cloth out and wipe the product. Then, dry the product with dry absorbent cloth.

Please carefully read and strictly follow the previous suggestions. If the product remains faulty, you can send it to the place of purchase or authorized maintenance center for maintenance. We will provide help as soon as possible.

FAQ

Phenomena	Cause of Malfunction	Troubleshoot Method
No response from control panel operation	Power switch is off	Open battery compartment, turn on the power
	AC Power failure	Contact local main power supply bureau
	Lithium battery backup power exhausted	Connect to main power with adapter
Accessories cannot connect to control panel	Panel not in learning status	Make sure the panel set in learning status
	Accessories not triggered for learning	Make sure the triggered accessories transmitting signal to panel for learning
	The control panel has different radio frequency with accessories	Please contact retailer for help
No response from the control panel by operating remote control	Remote control is not learned to control panel	Follow the manual and connect the remote control to panel
	Out of range between remote control and panel	Remote control the panel in proper distance
		Signal repeater could be added
RFID card/tag fail to disarm	RFID card/tag not connected to the panel	Follow the manual and connect RFID card/tag to the panel
Touch keyboard fail to make related setting	Not logged onto the setting menu	Input the correct admin code, press [Enter] and log on menu setting
No response after inserting a SIM card	The direction of the SIM card is not correct	Please insert the SIM card again according to the user manual
	Switch on the control panel first and then insert the SIM card	Insert the SIM card first and then switch on the control panel
	The SIM card is not a GSM SIM card	Please use GSM SIM card
APP replied "Return data run out"	Please check the network of control panel and mobile phone	Make sure the network works properly
APP replied "Control panel offline"	Please check the network of control panel	Make sure the SIM card of control panel is not indebted

Specifications

Control Panel

Power Supply	Input DC 12V 500mA, 6Wh
Standby Current	< 90mA
Alarm Current	< 300mA
Backup Battery	BL-5B 3.7V 800mAh rechargeable lithium battery x 2 pcs
Internal Siren Volume	100dB
Radio Frequency	315MHz or 433.92MHz (±75KHz)
Maximum Stored Phone No.	5 alarm phone numbers and 2 CMS numbers
Maximum Remote Controls	30 pcs
Maximum Sensors	99 pcs
Maximum RFID Tags	99 pcs
Maximum Event Logs	150 events
Housing Material	ABS plastic
Operating Condition	Temperature -10°C ~+55 °C Relative Humidity < 80% (non-condensing)
Dimensions (L x W x H)	203 x 117 x 25mm

Wireless Remote Control

Power Supply	DC 3V (CR2025 Lithium Battery x 1pc)
Alarm Current	< 7mA
Transmitting Distance	< 80m (in open area)
Radio Frequency	315MHz or 433.92MHz (± 75KHz)
Housing Material	ABS plastic
Operating Condition	Temperature -10°C ~+ 55°C Relative Humidity < 80% (non-condensing)
Dimensions (L x W x H)	58 x 31 x 9.5mm

Wireless Door/Window Contact

Power Supply	DC 12V (23A Battery x 1 pc)
Static Current	< 35uA
Alarm Current	< 10mA
Transmitting Distance	< 80m (in open area)
Radio Frequency	315MHz or 433.92MHz (±75KHz)
Housing Material	ABS plastic
Operating temperature	Temperature -10°C ~+ 55°C Relative humidity < 80% (non-condensing)
Transmitter Dimensions (L x W x H)	71 x 34 x 17.5mm
Magnet Dimensions (L x W x H)	51 x 12 x 13.5mm

PIR Motion Detector

Power Supply	DC 3V (AA 1.5V LR6 Battery x 2 pcs)
Static Current	< 90uA
Alarm Current	< 9.5mA 8m/110°
Pet Immunity	< 80m (in open area)
Transmitting Distance	315MHz or 433.92MHz (±75KHz)
Radio Frequency	ABS plastic
Housing Material	Temperature -10°C ~+ 55°C
Operating Condition	Relative humidity < 80% (non-condensing)
Detector Dimensions (L x W x H)	108 x 52 x 36.8 mm
Bracket Dimensions (L x W x H)	52 x 30 x 26.5 mm

RFID TAG

Internal Circuit	Tk4100 CMOS
Working Frequency	125KHz
Housing Material	Compound Plastic
Dimension	30mm

Disclaimer

Dear users:

We have reviewed this manual thoroughly in order that it will be an easy to use guide to this product. All statements, technical information, recommendations in this manual are believed reliable, but the accuracy and completeness thereof are not guaranteed or warranted.

The specifications and information regarding the products in this document are subject to change without notice.

Photocopy, copy, reproduction, translation to any language, modification, storage in a retrieval system or retransmission, in any form or by any means, electronic, mechanical or otherwise, is strictly prohibited without prior written permission.

In no event we are liable for any indirect, special, incidental, or consequential damages, including, without limitation, lost profits or loss or damage to data arising out of the use or inability to use this document, even if the product has been advised of the possibility of such damages.

FCC Statement

This equipment has been tested and found to comply with the limits for a Class B digital device, pursuant to Part 15 of the FCC Rules. These limits are designed to provide reasonable protection against harmful interference in a residential installation. This equipment generates uses and can radiate radio frequency energy and, if not installed and used in accordance with the instructions, may cause harmful interference to radio communications. However, there is no guarantee that interference will not occur in a particular installation. If this equipment does cause harmful interference to radio or television reception, which can be determined by turning the equipment off and on, the user is encouraged to try to correct the interference by one or more of the following measures:

- Reorient or relocate the receiving antenna.
- Increase the separation between the equipment and receiver.
- Connect the equipment into an outlet on a circuit different from that to which the receiver is connected.
- Consult the dealer or an experienced radio/TV technician for help.

This device complies with part 15 of the FCC Rules. Operation is subject to the condition that this device does not cause harmful interference

This device complies with Part 15 of the FCC Rules.

Operation is subject to the following two conditions:

- (1) This device may not cause harmful interference, and
- (2) this device must accept any interference received, including interference that may cause undesired operation.

Changes or modifications not expressly approved by the party responsible for compliance could void the user's authority to operate the equipment.

This equipment complies with FCC radiation exposure limits set forth for an uncontrolled environment. This equipment should be installed and operated with minimum distance 20cm between the radiator & your body.