

# FriendMedia Set-top Box/FMDSS200

---

## Quick Reference Guide

Please do read user manual before you operate the TV box.

## Safety instruction

- ❖ Please keep the product in horizontal position. Do not put any heavy stuff on the top of the TV box.
- ❖ Please use the provided power adapter. Do not use the damaged power cable and plug.
- ❖ Please avoid to plug power adapter with wet hands.
- ❖ Please do not disassemble, modify machine by yourself to avoid any shock and damage to the TV box.
- ❖ Please keep the machine away from the heat source to avoid to damage the machine; The TV box, it should be put in a well ventilation place.
- ❖ Please keep the TV box away from damp and dusty environment to avoid fire and electric shock.
- ❖ Please prompt shut down and unplug power adapter when the machine emitting smoke or having special smell.
- ❖ Please unplug the power adapter when long time not using the TV box.

## Accessory List

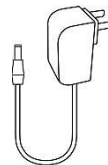
Open the gift box to check below accessories:



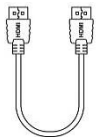
TV Box x1



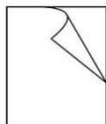
Remote Control x1



Power Adapter x1



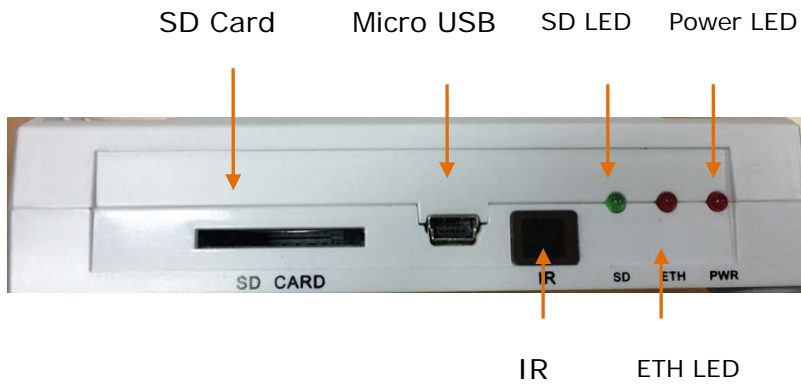
HDMI Cable x1



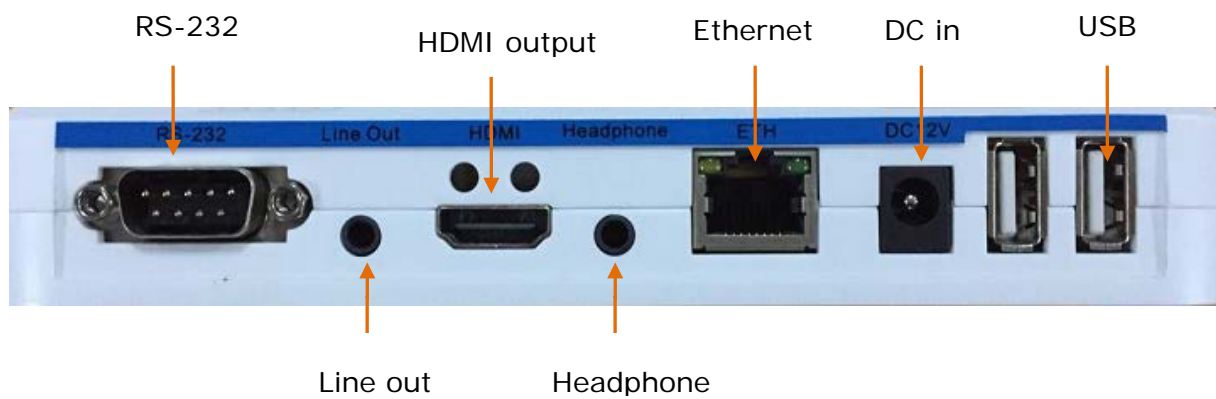
User Manual x1

## Hardware

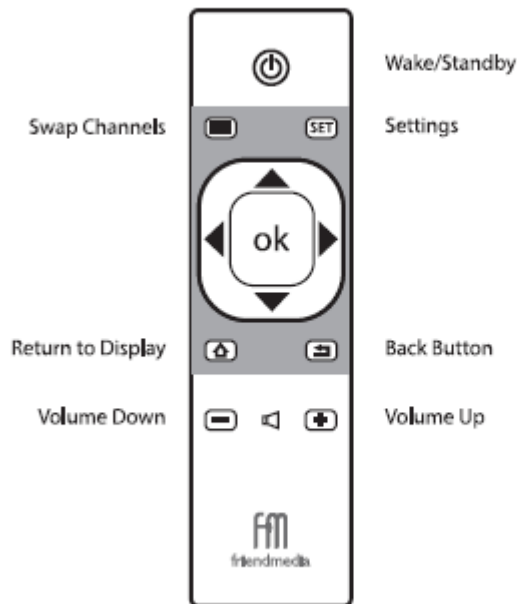
- Side Panel



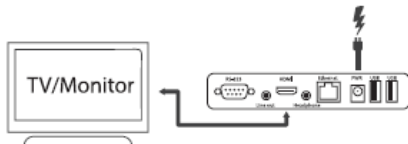
- Rear Panel



● Friendmedia Quick Start Guidel



- 1 Connect the FM Player to TV using the included HDMI cable, then connect the FM Player to power outlet



- 2 Wait for the TV to complete its bootup sequence. Press the **SET** button when the TV goes blank to access the **Settings** menu



- 3 Using the arrow keys, navigate to **INTERNET** and connect the Player to the internet. You can either using an **Ethernet cable**, or select one of the available **WiFi** networks



- 4 Once connected, tap the Back button until you reach the **Display mode**, which should be a blank screen at this point



- 5 Using a computer, log into your **FriendMedia Account** to access the **Content Creator**. Please contact support if you have not received your login credentials

- 6 For more help on creating your content, see **"Create Your First Content"** video or manual

## Technical Specifications

<b>CPU</b>	A31 四核 Cortex A7 1Ghz
<b>Android OS</b>	Android 4.2
<b>Video output</b>	HDMI
<b>Video format</b>	H.264, MPGE, MKV, MP4 and other video formats
<b>Audio format</b>	AAC, WAV, MP3 and other audio formats
<b>Photo format</b>	JPG, BMP, PNG and other photo formats
<b>Network</b>	Wi-Fi 2.4G 802.11b/g/n
	RJ45 Interface 10M/100M adaptive
<b>Operation temperature</b>	Temperature: 0℃~40℃; Humidity: <95%
<b>Power</b>	Input: AC100-240V 50/60Hz
	Output: DC 12V 1.5A
<b>Power consumption</b>	Work: <8W; Standby: <0.5W;

## Troubleshooting

Issue	Possible reason	Solution
<b>After turned on, without any display</b>	The power cord Doesn't connect or socket without electricity	Connected power plug, ensure normal voltage electrical outlet
<b>TV with images without Voice</b>	Audio cable is not connected	Re-connect the Audio cable
	TV Box in MUTE state	Please press mute button to restore volume
	Audio setting is abnormal	Please enter the audio and video Settings menu, select the appropriate sound channel and language
	Volume is too low	Turn up the volume
<b>Fail to connect the network</b>	Cable connect is abnormal	Please reconnect internet
	Wi-Fi closed or the signal is too weak	Please restart the Wi-Fi or adjust the position of this machine
<b>Controller failure</b>	Remote control is not in the correct direction	Please aim at the front panel's ' SENSOR', then try again
	Remote control is with low battery	Please change the batteries
	Remote control is broken	Please send it to the local maintenance station for checking

## **FCC STATEMENT:**

This equipment has been tested and found to comply with the limits for a Class B digital device, pursuant to Part 15 of the FCC Rules. These limits are designed to provide reasonable protection against harmful interference in a residential installation. This equipment generates uses and can radiate radio frequency energy and, if not installed and used in accordance with the instructions, may cause harmful interference to radio communications. However, there is no guarantee that interference will not occur in a particular installation. If this equipment does cause harmful interference to radio or television reception, which can be determined by turning the equipment off and on, the user is encouraged to try to correct the interference by one or more of the following measures:

- Reorient or relocate the receiving antenna.
- Increase the separation between the equipment and receiver.
- Connect the equipment into an outlet on a circuit different from that to which the receiver is connected.
- Consult the dealer or an experienced radio/TV technician for help.

Changes or modifications not expressly approved by the party responsible for compliance could void the user's authority to operate the equipment.

This device complies with part 15 of the FCC Rules. Operation is subject to the following two conditions: (1) This device may not cause harmful interference, and (2) this device must accept any interference received, including interference that may cause undesired operation.

The antenna(s) used for this transmitter must be installed to provide a separation distance of at least 20 cm from all persons and must not be co-located or operating in conjunction with any other antenna or transmitter.

## IC STATEMENT:

This device complies with Industry Canada licence-exempt RSS standard(s). Operation is subject to the following two conditions: (1) this device may not cause interference, and (2) this device must accept any interference, including interference that may cause undesired operation of the device.

Le présent appareil est conforme aux CNR d'Industrie Canada applicables aux appareils radio exempts de licence. L'exploitation est autorisée aux deux conditions suivantes : (1) l'appareil ne doit pas produire de brouillage, et (2) l'utilisateur de l'appareil doit accepter tout brouillage radioélectrique subi, même si le brouillage est susceptible d'en compromettre le fonctionnement.