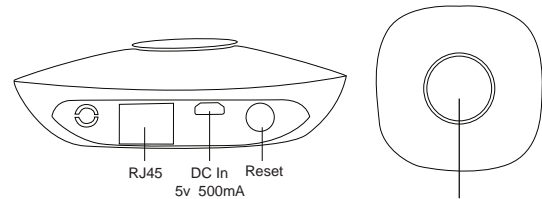




1 Product Introduction

HGW735 is a ZigBee HA1.2 gateway with Ethernet interface. It works with other ZigBee HA devices. With the App downloaded from App Store or Google Play to mobile phone or tablet, users can set account/ area/ scene/ schedule/ group/ binding with the gateway.

2 Product Parameters



Report gateway information to App

3 App Download

Mobile OS: Android 4.1 or higher/ iOS 9.0 or higher

iOS: Search "iLightsIn Pro" and install from App Store

Android: Search "iLightsIn Pro" and install from Google Play

Windows: Please contact us to get installer package

1



Pic1



Pic2



Pic3

4.2.Edit a gateway

Click **Setting/ Gateway** list. Click a gateway to rename, recover default settings, delete, and set parameters (pic 2&3).

5 Device

5.1.Add a device

Power on initial devices and gateway for adding operation. Max 20 initial devices are allowed for each power up. Open App and select the gateway from **Setting/ Add a device**. Click **Scan device** and the gateway will start to search automatically (pic 4). Click the device from search list to rename. Click **Try me** to check if the device is connected or where the device is located. **Select area** is to put these found devices into it (pic 5). Keep all first 20 initial devices added successfully on, then power on other 20 initial devices. Follow the same procedure until the gateway finishes adding all devices needed. The initial device can be searched by gateway in 30 minutes after power on. After adding devices, users can start to control them from corresponding areas. When multiple gateways are needed under the same LAN, power off the gateways and devices already added, and power on the new gateway and initial devices. If you want to add the device in previous gateway to a new one, reset the device first.

- Delete the device on App while the device and its gateway are power on.
- Reset the device to initial settings by physical switch. Please refer to device user manual for detailed steps.

Attention: When there's no proper area to put a device, create a new area

3

4 Gateway

4.1.Add a gateway

Power on the gateway before opening the App "iLightsIn Pro" and entering into the Login menu. Short press round button in the middle of the gateway and the gateway information will display in Login menu. Then users may login with the default administrator account.

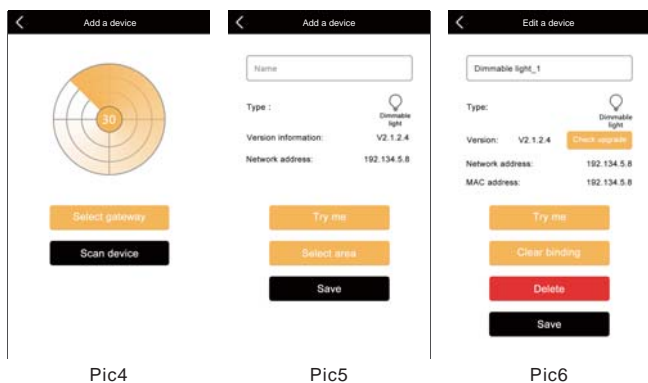
Default user name: **Admin**

Default password: **00000000**

Each gateway supports max 100 devices.

2

by clicking '+' upper right corner of the app. Max 20 areas are allowed to be created per gateway per user account. Each area supports max 100 devices and 30 groups.



5.2.Edit a device

From **Setting/ Edit a device** on App, users can rename the device, clear binding, and delete the device. When a new version has been detected for this device, the **Upgrade** button will be activated. Users can decide to update or not (pic 6).

4

6 Group

6.1.Add a group

Users can put same-type devices into a group. The devices in the group access synchronization effects. From **Settings/ Add a group**, you can input group name, choose group type, and select devices to add into the group (pic 7).

Attention: When saving the group setting, the gateway and devices in that group are required to be powered on. Each gateway supports max 30 groups.



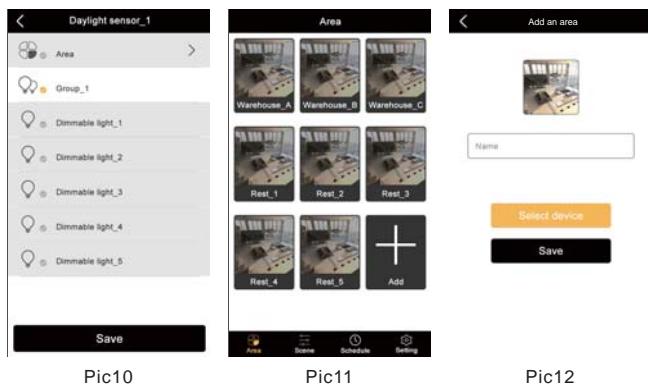
5

6.2.Edit a group

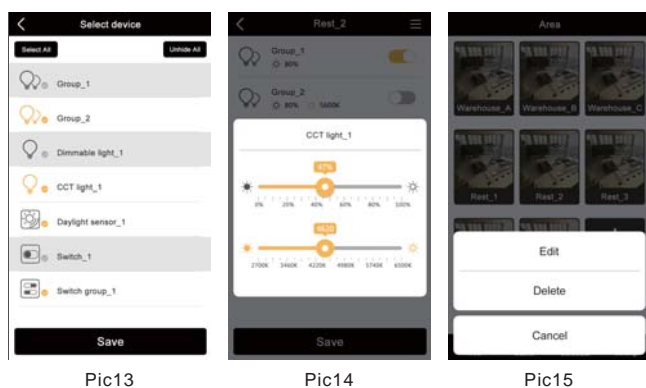
Click the group from **Settings/ Edit group**. Edit a group, delete a group, etc (Pic 8).

7 Binding settings

From **Binding settings**, users are able to bind sensors, remote control, switches that ever added with the lights. The gateway and devices to be bound are required to be powered on during binding process. It can be done on App, **Setting/ Binding settings** (Pic 9&10).



6



8 Area

8.1.Add an area

Click **Area** to enter into the menu. Add an area by clicking '+' (pic 11). Name the area and choose a photo for this area. **Select device** to choose the devices for this new area.

Attention: Priority in this system goes like, Area – Group – Single Device. Each area supports max 100 devices and 30 groups.

8.2.Area Sub Menu

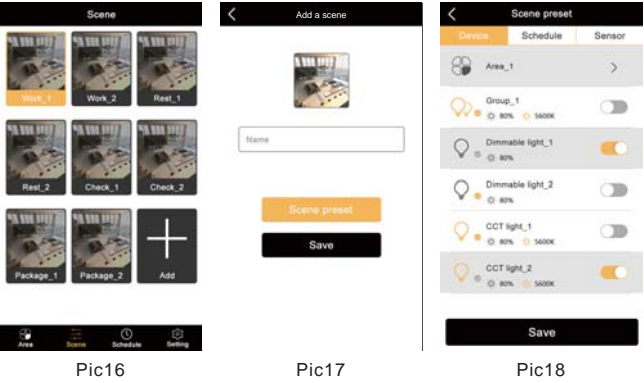
Click one of the area to enter into sub-menu of this area. Users can control

7

a single device or a group of devices here. Click upper right corner icon to choose a sorted manner for easier search of a group or a device. Move the slider to change color temperature or brightness (pic14).

8.3.Edit an area

Long press an area to display pop-up menu. Edit or delete the area (pic 15).



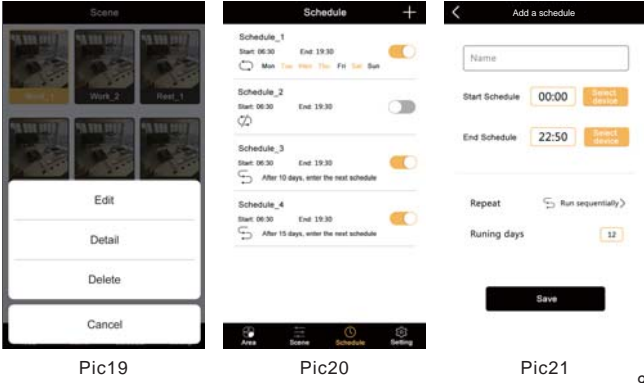
9 Scene

9.1.Add a scene

The system provides one-click scene function where users simple click a button to make different devices go to different preset statuses. Click “Scene” and add a new scene by clicking “+”. Name the scene and choose a photo for the scene. Users can add fixtures, schedules and sensors into the scene with different preset statuses. Max 30 scenes are allowed to be created per user account per gateway. Each scene supports max 20 devices or groups.

9.2.Edit a scene

From the **Scene** menu, long press a scene to edit, check details and delete the scene (pic 19).



10 Schedule

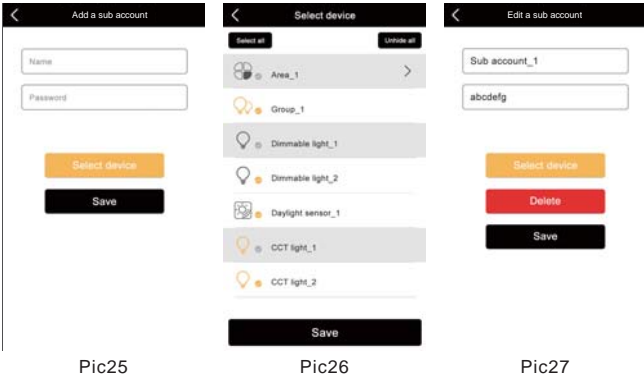
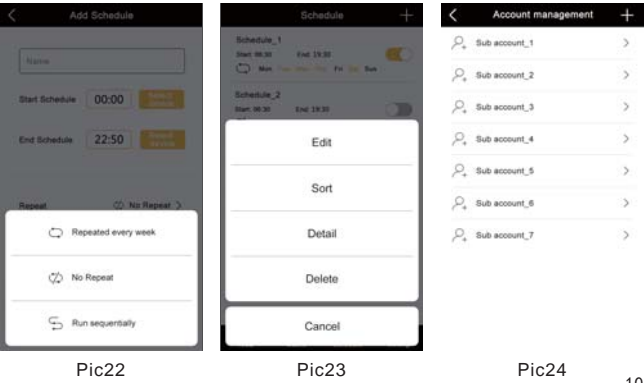
10.1.Add a schedule

Schedules allows users to add a schedule on a single device or different devices to realize smarter control over the device(s). Click upper right corner icon “+” to set up a schedule (pic 20). Choose a start time and an end time. Select devices with different statuses to start and to end (pic 21). Click on **Repeat** and toggle among **no-repeat**, **repeat every week** and **Run sequentially** (pic 22). If click **Run sequentially**, choose running days and when finished the next schedule will start automatically (pic 21). Max 20

schedules are allowed to be created per gateway per user account. Each schedule controls up to 20 devices or groups.

10.2.Edit a schedule

From the **Schedule** menu, long press a Schedule to edit, sort, check details, delete the Schedule(pic 23).



11 Account Management

11.1.Administration Account & Sub Accounts

One gateway supports management up to 11 user accounts:

1 Administration Account and 10 Sub Accounts. Administration account is authorized to allocate devices to the sub accounts, delete and modify passwords for sub accounts, and control authority for all devices. Sub account is authorized to change own password and control devices under its account. Add a sub account from on App, **Settings/ Account management** – upper right “+” (pic 24). Name the sub account and modify password, allocate devices for the sub account (pic 25&26). A sub account is able to manage its own area, scene and schedule.

11.2.Edit an account

Go to account list from **Setting** on App. Click the sub account to edit or delete (pic 27).

This device complies with part 15 of the FCC Rules. Operation is subject to the condition that this device does not cause harmful interference (1) this device may not cause harmful interference, and (2) this device must accept any interference received, including interference that may cause undesired operation.

Changes or modifications not expressly approved by the party responsible for compliance could void the user's authority to operate the equipment.

NOTE: This equipment has been tested and found to comply with the limits for a Class B digital device, pursuant to Part 15 of the FCC Rules. These limits are designed to provide reasonable protection against harmful interference in a residential installation. This equipment generates, uses and can radiate radio frequency energy and, if not installed and used in

accordance with the instructions, may cause harmful interference to radio communications. However, there is no guarantee that interference will not occur in a particular installation.

If this equipment does cause harmful interference to radio or television reception, which can be determined by turning the equipment off and on, the user is encouraged to try to correct the interference by one or more of the following measures:

- Reorient or relocate the receiving antenna.
- Increase the separation between the equipment and receiver.
- Connect the equipment into an outlet on a circuit different from that to which the receiver is connected.
- Consult the dealer or an experienced radio/TV technician for help.

To maintain compliance with FCC's RF Exposure guidelines, This equipment should be installed and operated with minimum distance between 20cm the radiator your body: Use only the supplied antenna.

FCC ID: 2AJ7E-HGW735