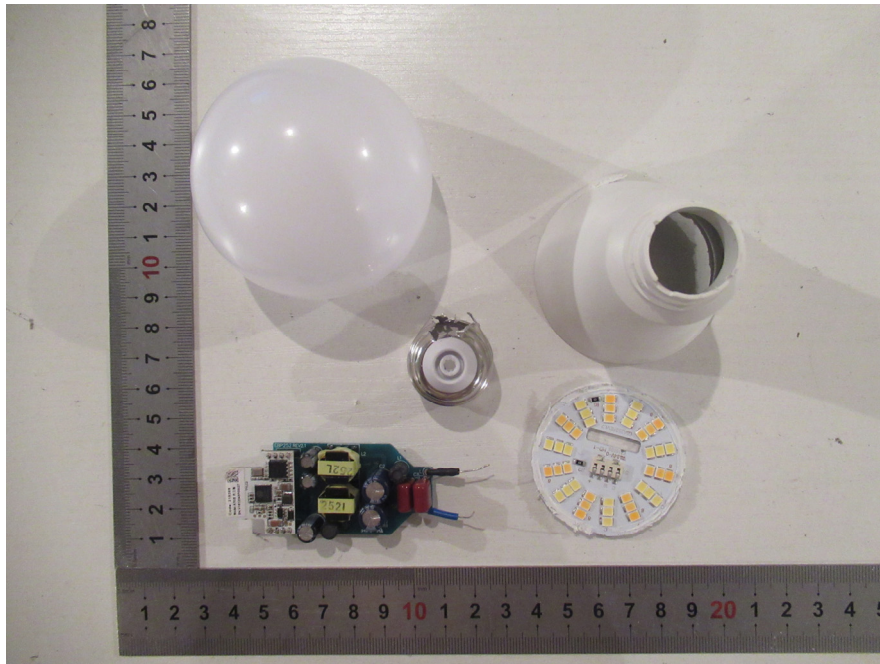
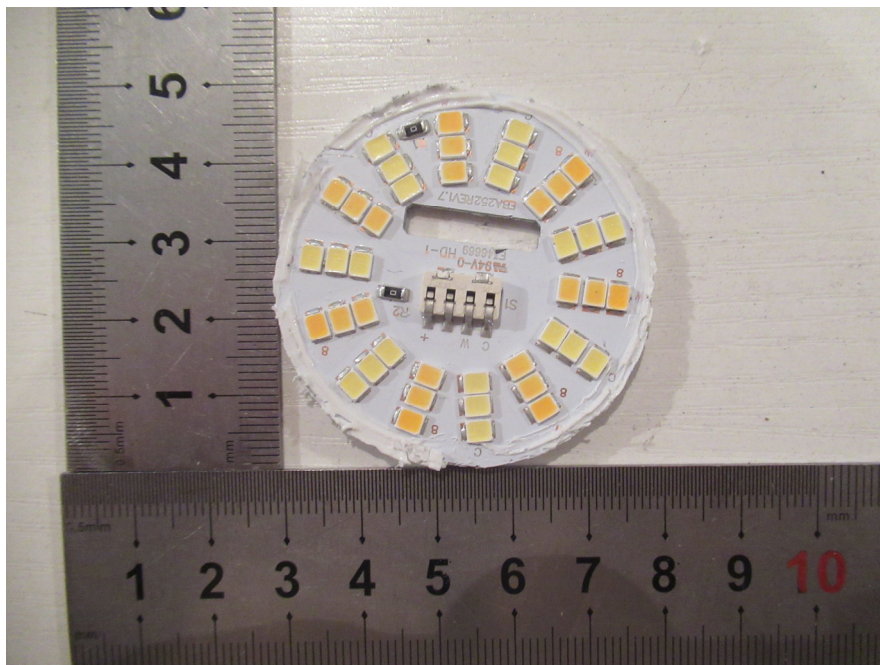


EXHIBIT B - EUT INTERNAL PHOTOGRAPHS

EUT – Cover off View-1



EUT – Cover off View-2

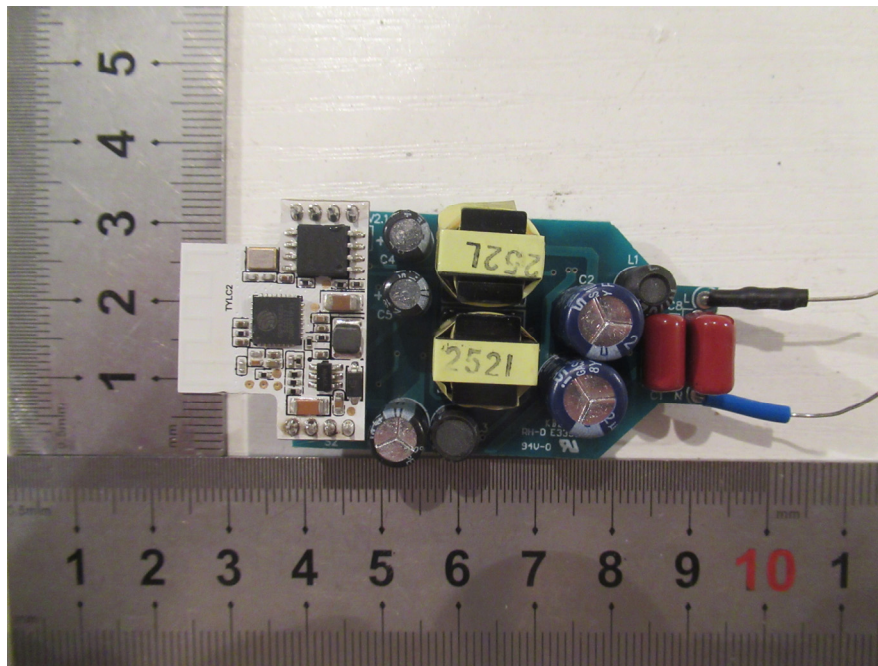


EUT – PCB Top View

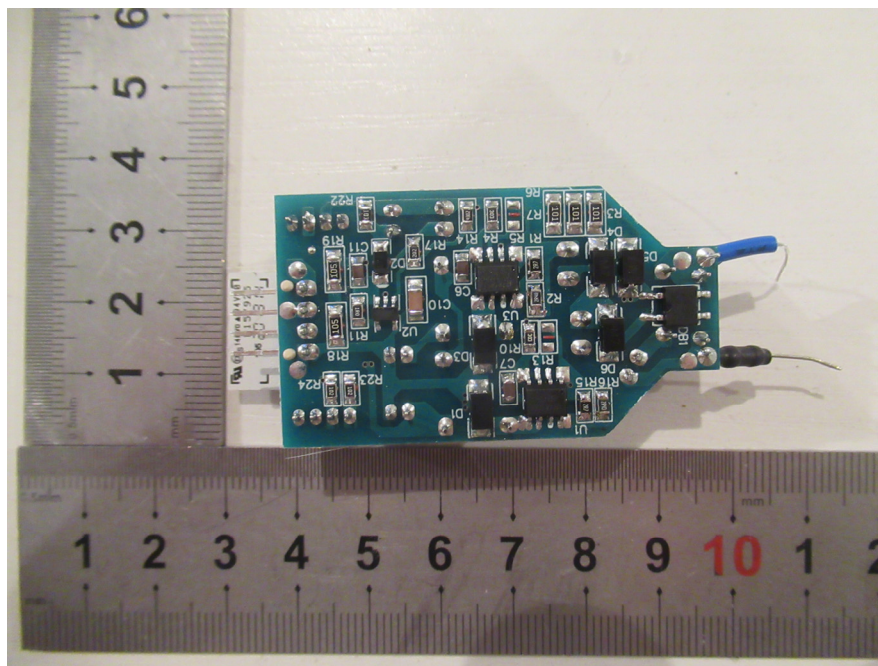
The top view of the EUT PCB shows a green printed circuit board with various electronic components. A white microcontroller module is mounted on the left side. Several electrolytic capacitors are visible, with two labeled '2521' and '7292' in yellow tape. There are also two red electrolytic capacitors. A ruler is placed below the board for scale, showing measurements in centimeters.

EUT – PCB Bottom View

The bottom view of the EUT PCB shows the reverse side of the components. The microcontroller module is visible on the left, and the rest of the board shows the underside of the capacitors and other components. A ruler is placed below the board for scale, showing measurements in centimeters.



EUT – PCB Bottom View



EUT – PCB Chip View

