



MADE IN CHINA

SHENZHEN FZONE TECHNOLOGY CO., LTD.

2nd floor, Building 12, Xicheng Industrial Area, Xixiang Town,
Baoan District, Shenzhen Guangdong China. 518101

E-mail: support@xvive.com

www.xvive.com

CHINA PATENT NUMBERS ZL 2016 3 0165464.8



MICROPHONE WIRELESS SYSTEM

U35Set English Manual



CAUTION
RISK OF ELECTRIC SHOCK
DO NOT OPEN



WARNING:

TO REDUCE THE RISK OF FIRE OR ELECTRIC SHOCK, DO NOT REMOVE SCREWS.
NO USER-SERVICEABLE PARTS INSIDE.
REFER SERVICING TO QUALIFIED SERVICE PERSONNEL.

WARNING:

TO REDUCE THE RISK OF FIRE OR ELECTRIC SHOCK, DO NOT EXPOSE THE APPLIANCE TO RAIN OR MOISTURE.

CERTIFICATION



Radio Approvals: FCC Part 15.249, RSS-247(Canada), EN 300 440 (Europe), EN 301.489 (Europe)

This device is in compliance with the essential requirements and other relevant provisions of Directive 2014/53/EU. All essential radio test suites have been carried out.

Detailed DOC file please visit our website: www.xvive.com

IC CAUTION:

This device complies with Industry Canada licence-exempt RSS standard(s). Operation is subject to the following two conditions:
(1) this device may not cause interference,
(2) this device must accept any interference, including interference that may cause undesired operation of the device.

Le présent appareil est conforme aux CNR d'Industrie Canada applicables aux appareils radio exempts de licence. L'exploitation est autorisée aux deux conditions suivantes :

- (1) l'appareil ne doit pas produire de brouillage, et
- (2) l'utilisateur de l'appareil doit accepter tout brouillage radioélectrique subi, même si le brouillage est susceptible d'en compromettre le fonctionnement.

FCC CERTIFICATION

FCC Caution: Any changes or modifications not expressly approved by the party responsible for compliance could void the user's authority to operate this equipment.

This device complies with Part 15 of the FCC Rules. Operation is subject to the following two conditions:

- (1) This device may not cause harmful interference, and
- (2) this device must accept any interference received, including interference that may cause undesired operation.

NOTE:

This equipment has been tested and found to comply with the limits for a Class B digital device, pursuant to Part 15 of the FCC Rules.

These limits are designed to provide reasonable protection against harmful interference in a residential installation. This equipment generates, uses and can radiate radio frequency energy and, if not installed and used in accordance with the instructions, may cause harmful interference to radio communications.

However, there is no guarantee that interference will not occur in a particular installation.

If this equipment does cause harmful interference to radio or television reception, which can be determined by turning the equipment off and on, the user is encouraged to try to correct the interference by one or more of the following measures:

- Reorient or relocate the receiving antenna.
- Increase the separation between the equipment and receiver.
- Connect the equipment into an outlet on a circuit different from that to which the receiver is connected.
- Consult the dealer or an experienced radio/TV technician for help.



WARNING: Risk of reproductive harm from exposure to Lead
www.P65Warnings.ca.gov

SAFETY INSTRUCTIONS FOR LITHIUM-ION RECHARGEABLE BATTERIES

If abused or misused, the rechargeable batteries may leak. In extreme cases, they may even present a risk of explosion, fire, heat, smoke or gas. Xvive does not accept any liability for damage arising from abuse or misuse.

- Keep away from children.
- Only charge rechargeable batteries with chargers recommended by Xvive.
- Observe correct polarity.
- Pack/store charged rechargeable batteries so that the terminals cannot contact each other (danger of shorting out/fire hazard).
- Do not expose to moisture.
- Switch rechargeable battery-powered products off after use.
- Only charge rechargeable batteries at ambient temperatures between 10°C/50°F and 40°C/104°F.
- When not using rechargeable batteries for extended periods of time, charge them regularly (about every three months).
- Do not mutilate or dismantle.
- Do not heat above 60°C/140°F, e.g. do not expose to sunlight or throw into a fire.
- Immediately remove rechargeable batteries from obviously defective products.
- Do not continue to use defective rechargeable batteries.
- Only use rechargeable batteries specified by Xvive.
- Dispose of rechargeable batteries at special collection points or return them to your specialist dealer.
- Store the products in a cool and dry place at room temperature (approx. 20°C/68°F).
- Remove the rechargeable batteries if the products will not be used for extended periods of time.



Hereby, **SHENZHEN FZONE TECHNOLOGY CO., LTD**, declares that this type of equipment is in compliance with the essential requirements and other relevant provisions of Directive 2014/53/EU

INFORMATION ABOUT COLLECTION AND DISPOSAL OF OLD ITEMS AND USED BATTERIES

[For customers in the European Union]

If you want to discard electrical and electronic items, please contact your dealer or supplier for further information.

These symbols on the products, packaging, or on any documents in the package mean it is incorrect to mix the used electrical and electronic products and batteries with general household garbage. These symbols are only valid in the EU. Please contact your local authorities or dealer for more information on the disposal of old items and used batteries:



To protect our environment, please take old products and used batteries to proper collection places, and follow your national legislation and the Directives 2012/19/EU and 2006/66/EC.

[Information on Disposal in Countries outside the European Union]

To deal with these old products and batteries properly, please help to save valuable resources and prevent any possibility of side effects on human health and our environment due to the inappropriate disposal of the old products and used batteries.

Please contact your local authorities to get more helpful information on how to dispose of old products and batteries.

ONE-YEAR LIMITED WARRANTY

Xvive Corporation Ltd. [Xvive] warrants our products to be free of defects in materials and workmanship in normal use for a period of one (1) year from the date of original purchase. Please visit <https://www.xvive.com> to register your new purchase.

Xvive will, at its sole discretion, or in affiliation with our authorized retailers, repair or replace at no charge, any unit that is inspected by Xvive or an affiliated Xvive service center and deemed to be defective within the warranty period. This warranty is non-transferrable.

This warranty is only valid to the original purchaser, only when purchased "new-in-box" from an Authorized Xvive Dealer and with a valid proof of purchase bearing the purchase date.

Within the USA:

- All Xvive warranty claims should be made with the retailer from which the unit was purchased. This applies to both retail stores and online retailers.

Outside of the USA:

- For all warranty and non-warranty claims, the purchaser should contact the Authorized Xvive Retailer from which the unit was purchased within the country or province in which it was purchased for information on how to obtain warranty or non-warranty service.

This limited warranty does not cover the following:

- Products that have been modified in any way;
- Any products whose serial numbers have been altered or removed;
- Exterior cosmetic damage or damage to the finish due to misuse or normal wear and tear;
- Products that were purchased as "used", items listed as demo stock or refurbished items;
- Damage to the product or parts caused by improper storage by the user;
- Any freight charges (from or to the retailer);
- Shipping Damage:
 - Shipping damage claims must be filed with the freight carrier (such as UPS, FedEx).

ONE-YEAR LIMITED WARRANTY

- Notify the freight carrier immediately of any shipping damage upon receipt of damaged items to begin the claim process.
- We also recommend reporting any shipping damage claim within (48) hours of receipt to the Authorized Retailer from which the item was purchased.
- Keep all original documents and packing materials until freight damage claim has a final resolution.

For units returned to Xvive USA:

- The item must be returned in the same format in which it was purchased. If a system containing a transmitter and receiver was purchased, then both units will need to be returned together.
- The purchaser will pay all freight charges to return the original item to Xvive USA or its affiliated service centers.
- If the unit is deemed to be covered by this warranty, Xvive will ship the repaired or replacement unit to the purchaser free-of-charge and without any additional freight charges.
- If the unit is deemed to NOT be covered by this warranty, other charges plus return freight charges will apply.

EXCEPT AS EXPRESSLY SET FORTH ABOVE IN THIS LIMITED WARRANTY, XVIVE MAKES NO OTHER EXPRESS OR IMPLIED WARRANTIES TO THE EXTENT PERMITTED BY LAW. XVIVE ASSUMES NO LIABILITY FOR PROPERTY DAMAGE RESULTING FROM FAILURE OF THIS PRODUCT NOR ANY LOSS OF INCOME, SATISFACTION, OR DAMAGES ARISING FROM THE LOSS OF USE OF SAME DUE TO DEFECTS OR AVAILABILITY OF SAME DURING SERVICE. THIS WARRANTY GIVES YOU SPECIFIC LEGAL RIGHTS AND YOU MAY ALSO HAVE OTHER RIGHTS WHICH VARY FROM STATE TO STATE OR BY COUNTRY OR PROVINCE.

For warranty inquiries not covered in this policy, please contact support@xvive.com

**IMPORTANT SAFETY INSTRUCTIONS
PLEASE READ THESE INSTRUCTIONS
IN A SAFE PLACE**



**WARNING: BEFORE USING YOUR XVIVE U35 MICROPHONE WIRELESS SYSTEM,
CAREFULLY READ THE OPERATING INSTRUCTIONS.**

1. Observe all instructions carefully in the U35 manual.
2. Do not to perform service operations beyond those described in the U35 manual. Services required when the apparatus has been damaged in any way, such as:
 - Liquid has been spilled or objects have fallen into the apparatus
 - The unit has been exposed to rain or moisture
 - The unit does not operate normally or changes in performance in a significant way
 - The unit is dropped or the enclosure is damaged
3. Do not place near heat sources, such as radiators, heat registers, or appliances which produce heat.
4. Guard against objects or liquids entering the device.
Do not use or place unit near water.
5. Clean only with a dry cloth.
6. Only use attachments/accessories specified by the manufacturer.
7. Prolonged listening at high volume levels may cause irreparable hearing loss and/or damage. Always be sure to practice "safe listening."

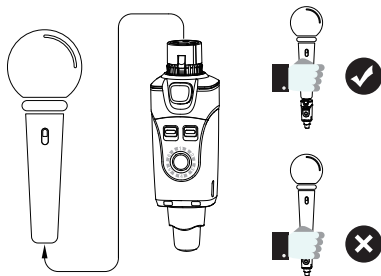
U35 SET PRODUCT INTRODUCTION

- 5.8Ghz band is optimal for dynamic microphone wireless system, Approved for use in worldwide.
- Less than 5ms Latency, Simultaneous broadcasts on 6 channels.
- Broad 20Hz – 20KHz frequency response
- Up to 90 feet (actual range depends on RF signal absorption, reflection and interference)
- 5 Hours of battery life (rechargeable battery for both Transmitter & Receiver)
- Works with XLR dynamic microphone and battery-powered condenser microphones.
- Mic mode for microphone and Line mode for other Gear output
- High Resolution 24-bit/48kpbs Audio
- Dynamic Range 110dB
- Signal to Noise Ratio is 110dB
- U35 wireless aims to take the complexity and frustration, out of traditional wireless microphone systems. Creating a flexible, all-in-one solution that makes any your favorite dynamic microphones into wireless.
- Wireless audio system for active loudspeakers.

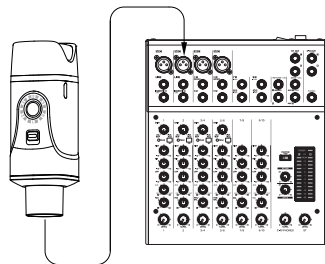
PACKAGE DETAILS

U35 Transmitter	1PCS
U35 Receiver	1PCS
USB Cable	1PCS
Manual	1PCS
Bag	1PCS

QUICK START

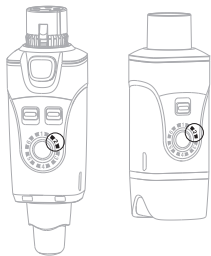


1. Plug the Transmitter into the XLR dynamic microphone and battery-powered condenser microphones.

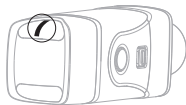


2. Plug the Receiver into the Mixer.

QUICK START



3. Turn on the Transmitter and the receiver and check the Channel.



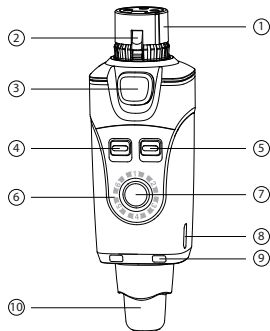
4. After connecting successfully, the LED lights on receiver will stay on.



5. Check the connection by talking through the microphone.

BASIC OPERATION

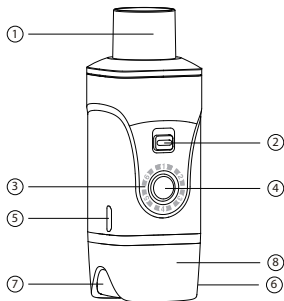
U35 TRANSMITTER



- ① Mic In: XLR microphone input jack
- ② Spring: Circumferential ground spring providing an accurate connection to the mating shell
- ③ Mic Lock: secures transmitter to the microphone
- ④ Input level switch: MIC = 0dB input
LINE = -10dB input
- ⑤ Power switch: switches unit on/off
- ⑥ Channel status LED: indicates selected channel
- ⑦ Channel switch: selects Channels 1-6
- ⑧ USB charging port
- ⑨ Power status LED: indicates power status:
Led off = 100% ~ 30%
Solid red = 29% ~ 11%
Flickering red = less than 10%
- ⑩ Antenna.

BASIC OPERATION

U35 RECEIVER



- ① XLR OUT: XLR microphone input jack
- ② Power switch: switches the unit on and off
- ③ Channel status LED: indicates selected channel
- ④ Channel switch: selects Channels 1-6
- ⑤ USB Port: For charging the battery
- ⑥ RF Status LED:
 - ON = Transmitter is on and link is established
 - Flashing = Signal connection interference
 - OFF = Transmitter off or unlinked
- ⑦ Power status Led: indicates power status.
 - Led off = 100% ~ 30%
 - Solid red = 29% ~ 11%
 - Flickering red = less than 10%
- ⑧ Antenna.

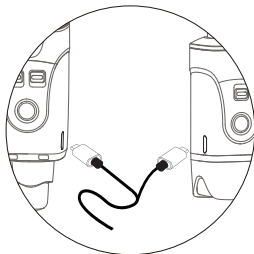
SPECIFICATIONS

U35 MICROPHONE WIRELESS SYSTEM

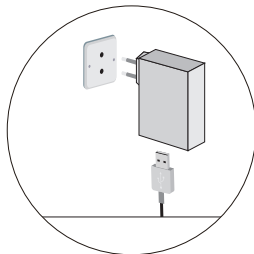
Tuning Bandwidth	5.8G
Working Range	Up to 90ft. Actual Range Depends On Rf Signal Absorption, Reflection And Interference.
Audio Frequency Response	20Hz – 20KHz(-3dB). Dependent On Microphone Type Or Input Signal.
Dynamic Range	110dB
Battery Life	Up To 5 Hours
RF Sensitivity	-88dBm
Total Harmonic distortion	0.2%
RF Output Power	25 mW E.I.R.P. max
Operating Temperature Range	0°C to 45°C. Battery Characteristics May Limit This Range.
Channel Count	Up To 6 Channels

	U35 TRANSMITTER	U35 RECEIVER
Dimensions	31 X 29 X 98 mm	31 X 29 X 98 mm
Weight	93g	92g
Housing	Molded Plastic And Cast Metal	Molded Plastic And Cast Metal
Battery	3.7V Rechargeable Li-Ion, 860mA	3.7V Rechargeable Li-Ion, 860mA
Impedance	Input 220 Ω (1KHz)	Output 470 Ω (1KHz)
Audio Input Connector	Balanced XLR Male Input	
Audio Output Connector		Balanced XLR Female Output
Maximum Input Level	Mic Mode: 2.8Vp-p Line Mode: 7Vp-p	
Maximum Output Level		2.8Vp-p
Gain Adjustment Range	Two Mode, Mic Is 0dB, Line Is -10dB	
Battery Life	Up To 5 Hours	Up To 5 Hours
Support Microphone Type	XLR Dynamic Microphone And Battery-powered Condenser Microphones.	
Antenna Impedance	50 Ω	50 Ω
Antenna Type	1/4 Wave Sleeve Dipole, Non-removable	1/4 Wave Sleeve Dipole, Non-removable
Number Of Antenna	1	2

BATTERIES AND CHARGING



Connect Power



Connect to the socket

Note:

Turn off the power switch while charging.

Please do not use U35 when charging, which may reduce battery life.

CHARGING TIMES

BATTERY LIFE

0:15

30 min

0:30

1 hours

1:00

2 hours

2:30

5 hours

- * Always store U35 at room temperature
- * When storing the unit, please check the battery state regularly and charge if necessary.

5.8 GHz WIRELESS OVERVIEW AND INTERFERENCE

U35 operates on the 5.8 GHz ISM band, which is also used by Wi-Fi, Bluetooth, and other wireless devices. 5.8 GHz is an open band and, as such, does not require a license to be used worldwide.

Tips and Methods to Improve Wireless System Performance

- 1) Keep more than 3 metres of distance between the U35 receiver unit and Wi-Fi transmitters, such as routers.
- 2) If you experience interference from Wi-Fi devices in the vicinity, try changing to a different channel on the U35 transmitter and receiver.
- 3) If necessary, shorten the distance between the transmitter and receiver units.

5.8 GHz Frequency Tables

CHANNEL 1	5730 MHz, 5842 MHz, 5844 MHz
CHANNEL 2	5736 MHz, 5833 MHz, 5835 MHz
CHANNEL 3	5742 MHz, 5827 MHz, 5829 MHz
CHANNEL 4	5756 MHz, 5803 MHz, 5805 MHz
CHANNEL 5	5785 MHz, 5811 MHz, 5813 MHz
CHANNEL 6	5780 MHz, 5791 MHz, 5797 MHz

* Up to six U35 sets can be used simultaneously in one area

TROUBLESHOOTING

ISSUE	SOLUTION
No Sound	<ul style="list-style-type: none">• Check that the U35 Receiver's RF LED is lit.• Check that the microphone is turned on and receiving signal from the U35 Transmitter• Check that the power switch is turned on for both the Transmitter and the Receiver.• Ensure that the U35 Transmitter and Receiver are on the same channel.• The Receiver can be paired with one Transmitter at a time.
Distortion or Faint Sound	<ul style="list-style-type: none">• Adjust the gain mode to "Line" or "Mic"• Adjust the output signal from the transmitting device.
Signal instability: RF LED flickering, or off completely	<ul style="list-style-type: none">• See, "Tips and methods to improve wireless system performance" page 12
Unable to switch the channel	<ul style="list-style-type: none">• The channel switch locks after 15 seconds. Double-click the channel button to unlock and reset.
Multiple connect	<ul style="list-style-type: none">• Use one transmitter can connect with more than 2 receivers.

APPLICATION SCENE

