

Measurement Report for ISM 2.4 GHz Band, BACK, WG50 Standalone

Exposure Conditions

Band	ISM 2.4 GHz Band	TSL Permittivity	39.6
Frequency [MHz] Channel Number	2440.000 17	TSL Conductivity [S/m]	1.79
Group UID	Bluetooth 10670-AAA	Phantom Section TSL	Flat HSL
Conversion Factor	8.28	Test Distance [mm]	0.00
Communication Configuration		Bluetooth Low Energy	

Hardware Setup

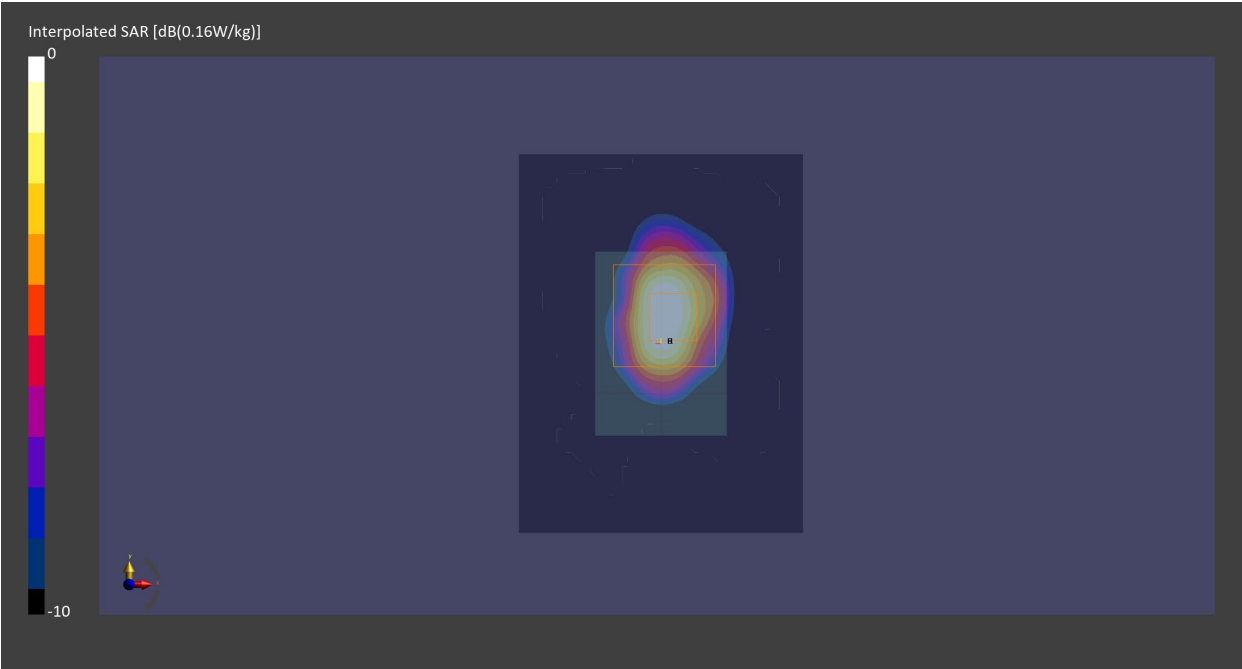
Probe Calibration Date	EX3DV4 - SN7711 2024-03-15	Phantom	ELI V8.0 (20deg probe tilt) - SN2160
DAE Calibration Date	DAE4 Sn1716 2024-03-13	TSL	HBBL-600-10000

Scans Setup

	Area Scan	Zoom Scan
Grid Extents [mm]	60.0 x 80.0	30.0 x 30.0 x 30.0
Grid Steps [mm]	10.0 x 10.0	5.0 x 5.0 x 1.5
Sensor Surface [mm]	3.0	1.4
Graded Grid	N/A	Yes
M2/M1 [%]		81.3
Dist 3dB Peak [mm]		6.4

Measurement Results

	Area Scan	Zoom Scan
psSAR1g [W/Kg]	0.072	0.076
psSAR10g [W/Kg]	0.028	0.028
Power Drift [dB]	0.06	0.10



Measurement Report for ISM 2.4 GHz Band, BACK, WG50 Tx w/ WB50

Exposure Conditions

Band	ISM 2.4 GHz Band	TSL Permittivity	39.6
Frequency [MHz] Channel Number	2440.000 17	TSL Conductivity [S/m]	1.79
Group UID	Bluetooth 10670-AAA	Phantom Section TSL	Flat HSL
Conversion Factor	8.28	Test Distance [mm]	0.00
Communication Configuration	Bluetooth Low Energy		

Hardware Setup

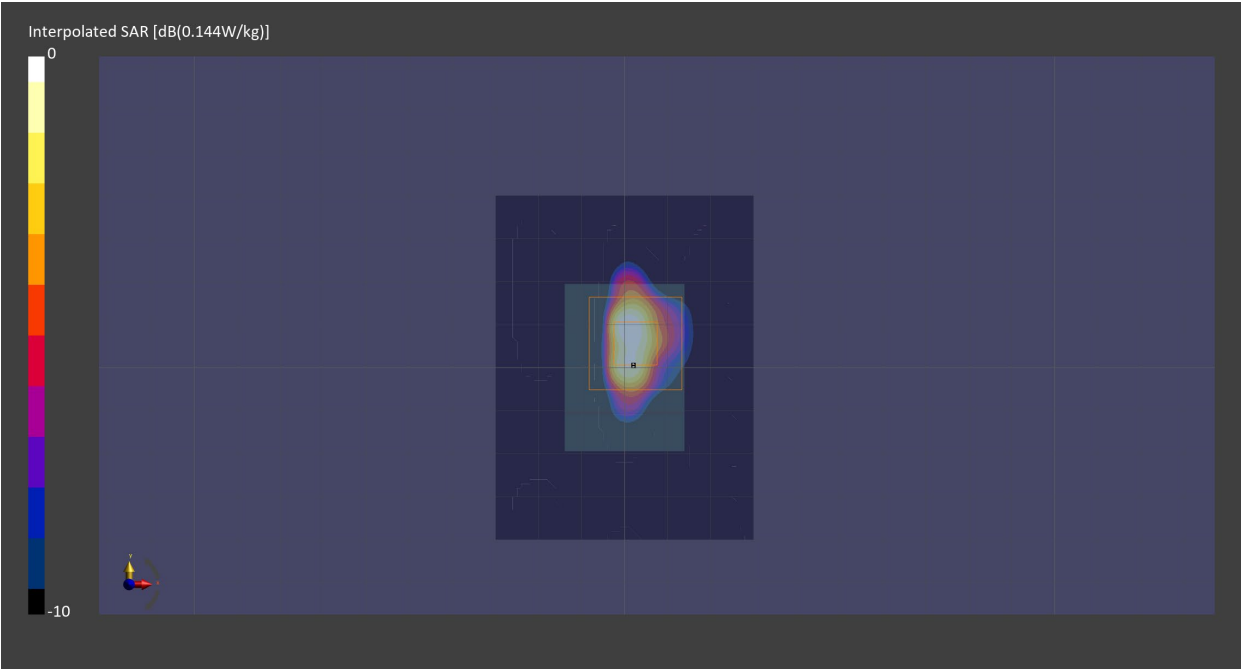
Probe Calibration Date	EX3DV4 - SN7711 2024-03-15	Phantom	ELI V8.0 (20deg probe tilt) - SN2160
DAE Calibration Date	DAE4 Sn1716 2024-03-13	TSL	HBBL-600-10000

Scans Setup

	Area Scan	Zoom Scan
Grid Extents [mm]	60.0 x 80.0	30.0 x 30.0 x 30.0
Grid Steps [mm]	10.0 x 10.0	4.9 x 4.9 x 1.5
Sensor Surface [mm]	3.0	1.4
Graded Grid	N/A	Yes
M2/M1 [%]		82.8
Dist 3dB Peak [mm]		5.0

Measurement Results

	Area Scan	Zoom Scan
psSAR1g [W/Kg]	0.063	0.065
psSAR10g [W/Kg]	0.021	0.022
Power Drift [dB]	-0.06	0.12



Measurement Report for ISM 2.4 GHz Band, BACK, WB50 Tx w/ WG50

Exposure Conditions

Band	ISM 2.4 GHz Band	TSL Permittivity	40.2
Frequency [MHz] Channel Number	2440.000 17	TSL Conductivity [S/m]	1.74
Group UID	Bluetooth 10670-AAA	Phantom Section TSL	Flat HSL
Conversion Factor	8.28	Test Distance [mm]	0.00
Communication Configuration	Bluetooth Low Energy		

Hardware Setup

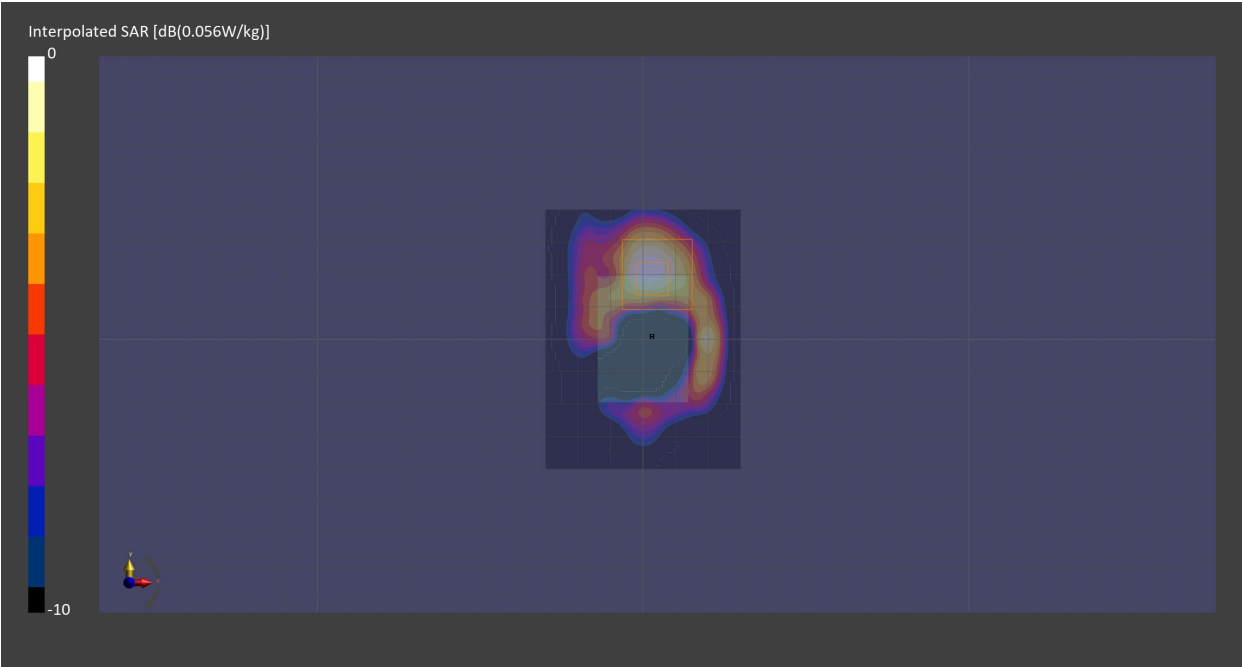
Probe Calibration Date	EX3DV4 - SN7711 2024-03-15	Phantom	ELI V8.0 (20deg probe tilt) - SN2160
DAE Calibration Date	DAE4 Sn1716 2024-03-13	TSL	HBBL-600-10000

Scans Setup

	Area Scan	Zoom Scan
Grid Extents [mm]	60.0 x 80.0	30.0 x 30.0 x 30.0
Grid Steps [mm]	10.0 x 10.0	2.7 x 2.7 x 1.2
Sensor Surface [mm]	3.0	1.4
Graded Grid	N/A	Yes
M2/M1 [%]		64.7
Dist 3dB Peak [mm]		2.2

Measurement Results

	Area Scan	Zoom Scan
psSAR1g [W/Kg]	0.010	0.01
psSAR10g [W/Kg]	0.004	0.004
Power Drift [dB]	-0.21	-0.97



Measurement Report for ISM 2.4 GHz Band, BACK, WG50 Tx w/ WD50

Exposure Conditions

Band	ISM 2.4 GHz Band	TSL Permittivity	40.6
Frequency [MHz] Channel Number	2440.000 17	TSL Conductivity [S/m]	1.76
Group UID	Bluetooth 10670-AAA	Phantom Section TSL	Flat Head Simulating Liquid
Conversion Factor	8.28	Test Distance [mm]	0.00
Communication Configuration		Bluetooth Low Energy	

Hardware Setup

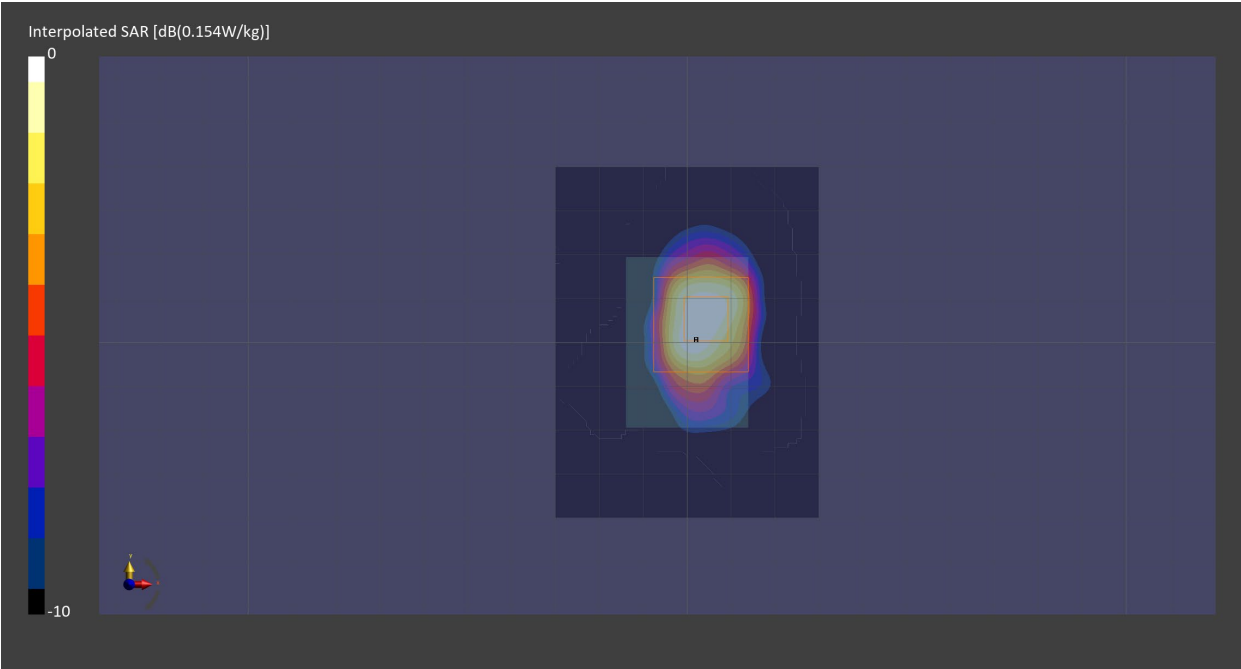
Probe Calibration Date	EX3DV4 - SN7711 2024-03-15	Phantom	ELI V8.0 (20deg probe tilt) - SN2160
DAE Calibration Date	DAE4 Sn1716 2024-03-13	TSL	HBBL-600-10000

Scans Setup

	Area Scan	Zoom Scan
Grid Extents [mm]	60.0 x 80.0	30.0 x 30.0 x 30.0
Grid Steps [mm]	10.0 x 10.0	5.0 x 5.0 x 1.5
Sensor Surface [mm]	3.0	1.4
Graded Grid	N/A	Yes
M2/M1 [%]		80.0
Dist 3dB Peak [mm]		6.4

Measurement Results

	Area Scan	Zoom Scan
psSAR1g [W/Kg]	0.060	0.072
psSAR10g [W/Kg]	0.025	0.026
Power Drift [dB]	0.06	-0.14



Measurement Report for Custom Band, BACK, WB50 Tx w/ WG50

Exposure Conditions

Band	Custom Band	TSL Permittivity	53.8
Frequency [MHz] Channel Number	13.600 13600	TSL Conductivity [S/m]	0.733
Group UID	CW 0--	Phantom Section TSL	Flat Head Simulating Liquid
Conversion Factor	16.02	Test Distance [mm]	0.00

Communication ConfigurationCW

Hardware Setup

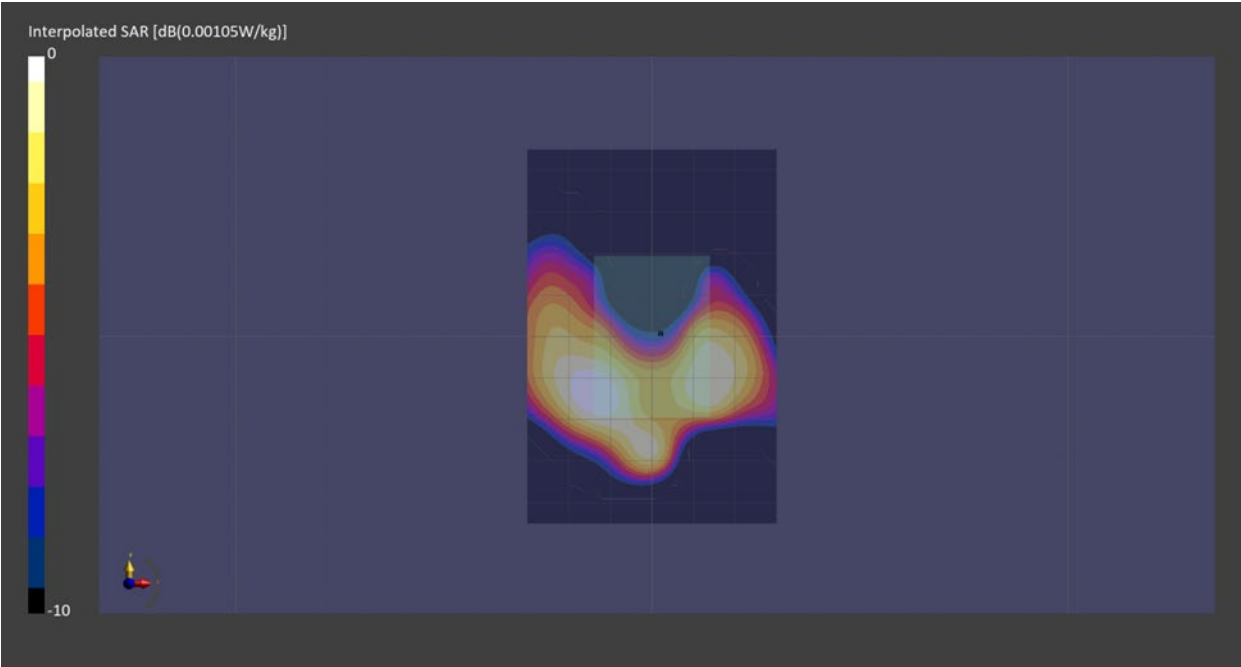
Probe Calibration Date	EX3DV4 - SN7710 2024-01-16	Phantom	ELI V8.0 (20deg probe tilt) - SN2081
DAE Calibration Date	DAE4 Sn1715 2024-02-12	TSL	HBBL4-250V3

Scans Setup

	Area Scan	Zoom Scan
Grid Extents [mm]	60.0 x 90.0	30.0 x 30.0 x 30.0
Grid Steps [mm]	15.0 x 15.0	6.0 x 6.0 x 1.5
Sensor Surface [mm]	3.0	1.4
Graded Grid	N/A	Yes
M2/M1 [%]		96.9
Dist 3dB Peak [mm]		0.7

Measurement Results

	Area Scan	Zoom Scan
psSAR1g [W/Kg]	0	0
psSAR10g [W/Kg]	0	0
Power Drift [dB]	N/A	N/A



Measurement Report for Custom Band, BACK, WD50 Tx w/ WG50

Exposure Conditions

Band	Custom Band	TSL Permittivity	53.4
Frequency [MHz] Channel Number	13.600 13600	TSL Conductivity [S/m]	0.729
Group UID	CW 0--	Phantom Section TSL	Flat Head Simulating Liquid
Conversion Factor	16.02	Test Distance [mm]	0.00

Communication ConfigurationCW

Hardware Setup

Probe Calibration Date	EX3DV4 - SN7710 2024-01-16	Phantom	ELI V8.0 (20deg probe tilt) - SN2081
DAE Calibration Date	DAE4 Sn1715 2024-02-12	TSL	HBBL4-250V3

Scans Setup

	Area Scan	Zoom Scan
Grid Extents [mm]	80.0 x 80.0	30.6 x 30.6 x 31.2
Grid Steps [mm]	10.0 x 10.0	1.8 x 1.8 x 1.2
Sensor Surface [mm]	3.0	1.4
Graded Grid	N/A	Yes
M2/M1 [%]		N/A
Dist 3dB Peak [mm]		N/A

Measurement Results

	Area Scan	Zoom Scan
psSAR1g [W/Kg]	0	0
psSAR10g [W/Kg]	0	0
Power Drift [dB]	N/A	N/A

