

QUICKSTART GUIDE

lumi
ELFI



**Let's
Get
Started.**

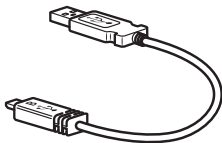
What's inside the box.



LUMI ELFI



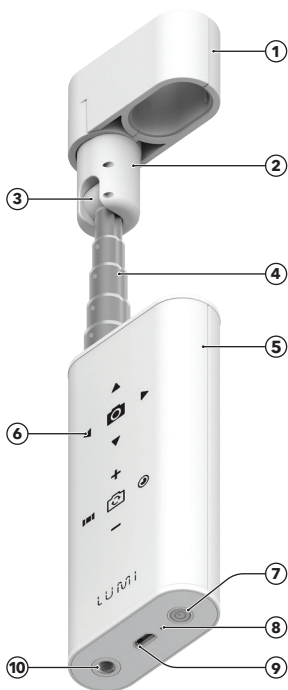
Pouch



Charging Wire

Add Graphics
about Wrist Strap

Lumi Elfi



- 1. Smartphone Clip
- 2. Motor
- 3. Hinge
- 4. Extendable Pole
- 5. Built-in Rechargeable Lithium-ion Battery
- 6. Built-in Button Panel (Refer to P.20)
- 7. Power Button
- 8. Signal Light
- 9. Micro USB Port
- 10. 1/4" Mounting Hole

1

Download App



Download the Lumi Elfi App both available on iOS/Android.



Operating system compatibility: iOSv9.0 or later;
Android vX.X or later.

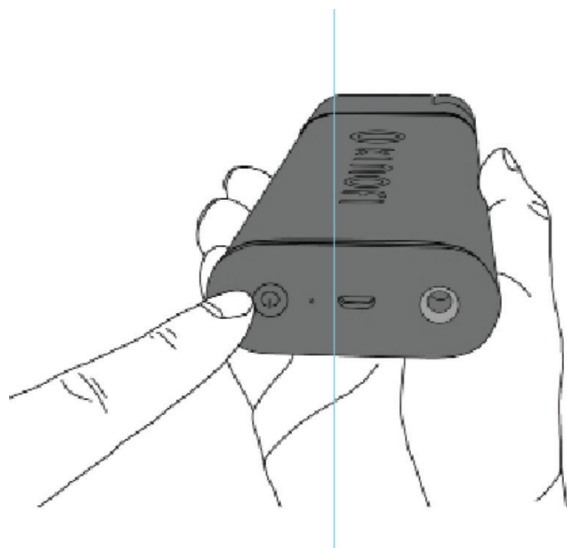
2 Turn on Lumi Elfi and Connect

Turn on device by holding the power button for three seconds.

The blue light will blink when pairing with Bluetooth.

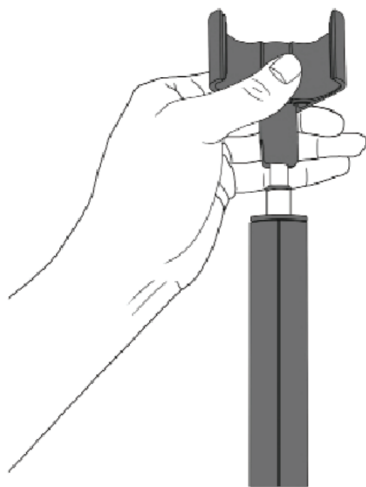
Once paired via Bluetooth, the blue light will stay on and no longer blink.

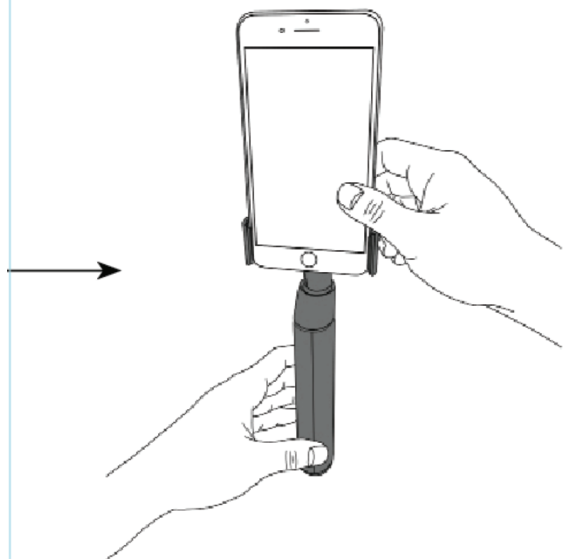
* Make sure that your smartphone's Bluetooth is turned on.



3

Attach Smartphone





Attach your smartphone to the clipper vertically.

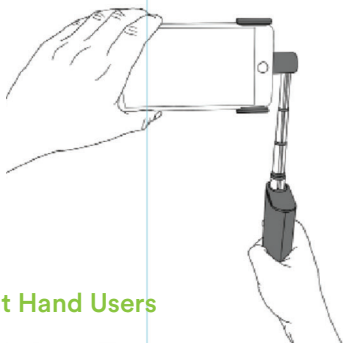
4

Rotate Horizontally

Turn your smartphone Horizontally.

You want to do these two steps first to ensure you are using your Lumi Elfi in its intended direction.

For using from the left side, select "Left Side" from the App Settings (Refer to P.19).



Right Hand Users



Left Hand Users
* Refer to P.19

5

Auto Face Tracking

For Auto Face Tracking, press the Face Tracking button on the App. It will not automatically follow the user's through the Red Box on the screen.



6 Auto Face Capture - Photo Capture

Users can set 1/2/3/5 seconds for automatic photo capture.

With this feature, once it detects that the user is no longer moving, it will automatically capture a photo after the selected timer.



7

Auto Panorama

On Device:

Make sure the device is leveled, either by holding it still or placing on a flat surface.

Then Press the Auto Panorama button on the device. It will then automatically take a 360 degree panorama shot (30 seconds). Press any button to stop anytime.

On Application:

Press the panorama button on the app. Make sure that your phone is leveled between -3 Degrees and 3 Degrees.

Press Start. Press any button to stop anytime.



8

Auto Time lapse

On Device:

Place on a steady surface.

Press Auto Time Lapse on device to perform a 360 degree, 1 hour time lapse. Press any button to stop anytime.

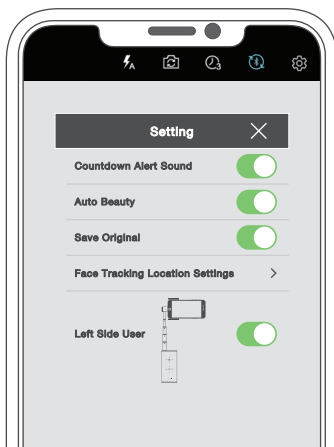
On Application:

Press the time lapse button. Make sure device is placed on a steady surface.

Press Start to perform a 360 degree, 1 hour time lapse. Press any button to stop anytime.

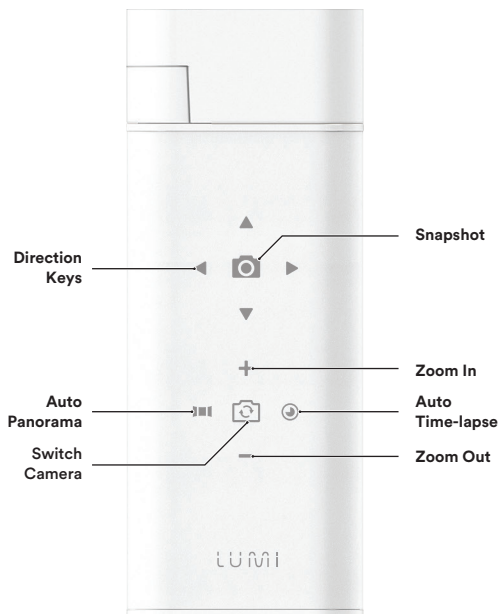


Left Hand Settings

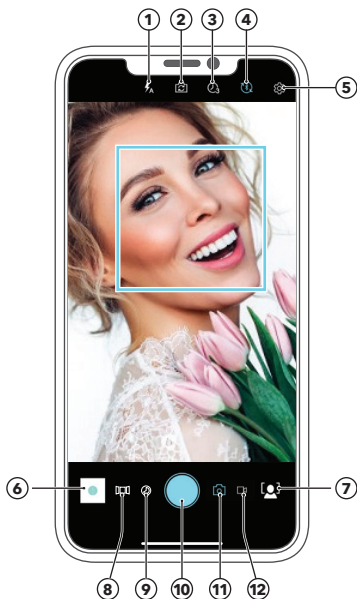


For using from the left side, select "Left Side" from the App Settings.

Button Panel features



Application features



- 1. Flash Light
- 2. Switch Camera
- 3. Count Down Timer
- 4. Bluetooth Pair
- 5. Settings
- 6. Album

- 7. Face Tracking Mode
- 8. Auto Panorama Mode
- 9. Time-lapse Mode
- 10. Start / Snapshot
- 11. Photo Mode
- 12. Video Mode

Ask Us

No question is too big
or too small.

INNOPLAY LIMITED

Unit 106A, 1/F, Enterprise Place 5W, No. 5 Science
Park West Avenue, Hong Kong Science Park,
Shatin, N.T., Hong Kong

新界沙田香港科學園科技大道西5號
5W企業廣場1樓106A室

innoplay.com.hk
kinofi.com



innoplay



KINOFI

PRECAUTIONS

Do not leave your product unattended when working where the general public could be endangered.

Keep out of the reach of children.

It is recommended that the equipment be removed from the support for transportation.

Do not clean the product with solvents, thinners, benzene or other corrosive products.

OPERATING SPECIFICATIONS

Operation temperature range 0°C (32°F) + 40°C (104°F)

Storage temperature range -20°C (-4°F) + 70°C (158°F)

High temperature:

Avoid temperatures exceeding +70°C (158°F), and do not leave the controller exposed to direct strong sunlight for any extended period, e.g. in a car parked in sunny place.

Electrical precaution:

Never use any battery, power supply or accessory that is not specified by this manual. Never use any battery made or modified by yourself.

Do not insert metal objects or foreign bodies into the device, accessories, connecting cables and any mechanical and/or electrical and/or electronic part of this product.

Do not scratch, cut or excessively bend the cords and do not put heavy objects on them.

Do not use cables whose insulation is damaged.

To prevent compromising their insulation, do not leave cords close to any heating source.

Do not dismantle nor modify the equipment if not explicitly allowed by instructions.

Never touch the electrical contacts of the connecting cables, because they could deteriorate, thus compromising operation.

DISCLAIMER

The information contained in this document is subject to change without notice.

INNOPLAY makes no warranty and shall not be liable for any errors on information contained in this document.

Any changes or modifications not expressly approved by INNOPLAY could void the user's authority to operate this equipment.

INFORMATION FOR USERS



In accordance with Article 10 of Directive 2012/19/UE of the 04/07/2012 concerning Waste Electrical and Electronic Equipment (WEEE).

The above symbol, also present on equipment, indicates that, at such time as the user should decide to dispose of the equipment, it must NOT be disposed of as unsorted municipal waste, but must be collected separately. The same applies to all components of the equipment and any recharge or refill elements that the product may comprise.

For information on the waste collection systems suitable for this equipment, contact INNOPLAY LIMITED or any authorised member of the National Registers in EU countries. Household (or similar) waste may be disposed of via standard municipal differentiated waste collection schemes.

If you purchase a new version of this model or similar equipment - or if your existing equipment measures less than 25 cm - you may return the items you no longer require to your retailer who will take care of contacting the company or organization handling the proper collection and management of used equipment.

Correct separate collection and specific treatment of WEEE are necessary to avoid potential damage to human health and the environment, and favour the recycling and recovery of component materials.

Improper or illegal disposal of this product by the user will result in punishments or fines being applied in accordance with national Decrees based on Directive 91/156/EC and 2008/98/EC.

Thank you for purchasing a INNOPLAY product.

INNOPLAY products are warranted to be fit for the purpose for which they have been designed, and to be free from defects in materials and workmanship. This guarantee does not cover the product against subsequent damage or misuse. The period of validity of the Standard Limited Warranty is defined by the law in force in the country, state or region where the product is sold. Please retain your receipt as proof of purchase to repair your product under warranty.

FCC Statement

This device complies with part 15 of the FCC rules. Operation is subject to the following two conditions: (1) this device may not cause harmful interference, and (2) this device must accept any interference received, including interference that may cause undesired operation.

Changes or modifications not expressly approved by the party responsible for compliance could void the user's authority to operate the equipment.

NOTE: This equipment has been tested and found to comply with the limits for a Class B digital device, pursuant to part 15 of the FCC Rules. These limits are designed to provide reasonable protection against harmful interference in a residential installation. This equipment generates uses and can radiate radio frequency energy and, if not installed and used in accordance with the instructions, may cause harmful interference to radio communications. However, there is no guarantee that interference will not occur in a particular installation. If this equipment does cause harmful interference to radio or television reception, which can be determined by turning the equipment off and on, the user is encouraged to try to correct the interference by one or more of the following measures:

- Reorient or relocate the receiving antenna.
- Increase the separation between the equipment and receiver.
- Connect the equipment into an outlet on a circuit different from that to which the receiver is connected.
- Consult the dealer or an experienced radio/TV technician for help.

The device has been evaluated to meet general RF exposure requirement. The device can be used in portable exposure condition without restriction.



©2019 INNOPLAY LIMITED. All right reserved.