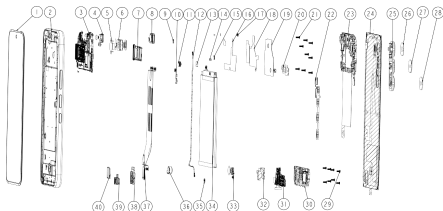


**Infinix**

**HOT 60 Pro**

**X6885 User Manual (P&T)**

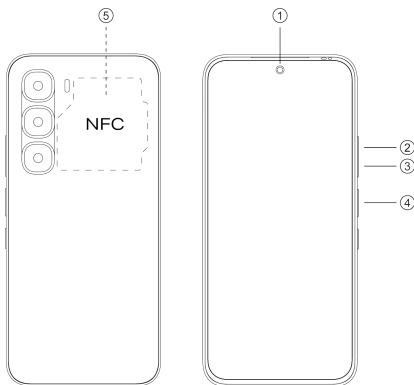
## Exploded diagram specification



1	TP+LCM	2	MIDFRAME
3	MAINBOARD	4	FRONT_CAMERA
5	SOM_CAM_CU_FOIL	6	REAR_SOM_CAMERA
7	CARD_HOLDER	8	RECEIVER
9	ESD_FOAM_PCB	10	IR_LED_FPC
11	REAR_8M_CAMERA	12	COAXIAL_CABLE
13	B_CAM_HARD_FOAM	14	CONDUCTIVE_FOAM
15	UP_FRAME_ESD_FOAM	16	COPPER_FOIL_C
17	PS_RUBBER	18	MAIN_PCB_GRAPHITE
19	NFC_ANTENNA	20	LINK_BAT_FPC_BT_B_FOAM
21	SILVER_L3.5_SCREW	22	SIDEKEY_FPC
23	UP_FRAME	24	BATTERY_COVER
25	B_CAM_DECO	26	B_CAM_LENS_1
27	B_CAM_LENS_2	28	B_CAM_LENS_3
29	SILVER_L3.0_SCREW	30	SPK_FRAME
31	SUB_BOARD	32	FOUR_IN_ONE_FOAM
33	FINGERPRINT_MODULE	34	BATTERY
35	MAIN_MIC_FOAM	36	MOTOR
37	MAIN_FPC	38	EARJACK_RUBBER

39	USB_RUBBER	40	LCM_BTBT_RUBBER
----	------------	----	-----------------

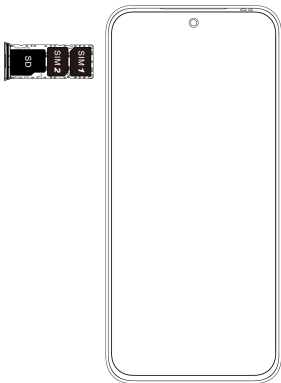
# Know your phone



1. Front camera
2. Volume + button
3. Volume - button
4. Power button
5. NFC

# SIM/SD card installation

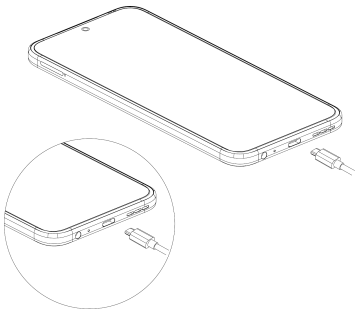
1. Power off your phone.
2. Refer to the following picture for SIM/SD card installation.



# Charging the phone

You can charge your phone with a charger or by connecting it to a computer using a USB cable (comes with the phone).

Use only Infinix chargers and cables. Other chargers or cables may damage the phone and invalidate its warranty.



# FCC Caution

## **Labelling requirements.**

This device complies with Part 15 of the FCC Rules. Operation is subject to the condition that this device does not cause harmful interference.

## **Information to user.**

Any changes or modifications not expressly approved by the party responsible for compliance could void the user's authority to operate the device.

## **Information to the user.**

Note: This device has been tested and found to comply with the limits for a Class B digital device, pursuant to part 15 of the FCC Rules. These limits are designed to provide reasonable protection against harmful interference in a residential installation. This device generates, uses and may radiate radio frequency energy and, if not installed and used in accordance with the instructions, may cause harmful interference to radio communications. However, there is no guarantee that interference will not occur in a particular installation. If this device does cause harmful interference to radio or television reception (able to be determined by turning the device off and on), the user is encouraged to try to correct the interference by one or more of the following measures:

- Reorient or relocate the receiving antenna.
- Increase the separation between the device and receiver.
- Connect the device to an outlet on a circuit different from that to which the receiver is connected.
- Consult the dealer or an experienced radio/TV technician for help.

## **Specific Absorption Rate (SAR) information:**

This mobile phone meets the government's requirements for

exposure to radio waves. The guidelines are based on standards developed by independent scientific organizations through periodic and thorough evaluation of scientific studies. The standards include a substantial safety margin designed to assure the safety of all persons regardless of age or health.

FCC RF Exposure Information and Statement. The SAR limit of USA (FCC) is 1.6 W/kg averaged over one gram of tissue.

Device types: Mobile Phone (FCC ID: 2AIZN-X6885) has also been tested against this SAR limit. The highest SAR value reported under this standard during product certification for use at the ear is 0.94W/kg and when properly worn on the body is 1.01W/kg. This device was tested for typical body-worn operations with the back of the handset kept 10mm from the body. To maintain compliance with FCC RF exposure requirements, use accessories that maintain a 10mm separation distance between the user's body and the back of the handset. The use of belt clips, holsters and similar accessories should not contain metallic components in its assembly. The use of accessories that does not satisfy these requirements may not comply with FCC RF exposure requirements, and should be avoided.

### **Body-worn Operation**

This device was tested for typical body-worn operations. To comply with RF exposure requirements, a minimum separation distance of 10mm must be maintained between the user's body and the handset, including the antenna. Third-party belt-clips, holsters, and similar accessories used by this device should not contain any metallic components. Body-worn accessories that do not meet these requirements may not comply with RF exposure requirements and should be avoided. Use only the supplied or an approved antenna.

For DTS patents, see <http://patents.dts.com>. Manufactured under license from DTS Licensing Limited. DTS, the Symbol, & DTS and the Symbol together are registered trademarks or trademarks of DTS, Inc. in the United States and/or other countries. © DTS, Inc. All Rights Reserved.



Operating System: Android™  
Android is a trademark of Google LLC.