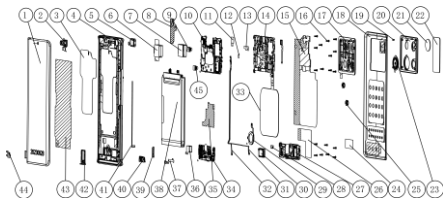


Infinix

NOTE 40 Pro+ 5G

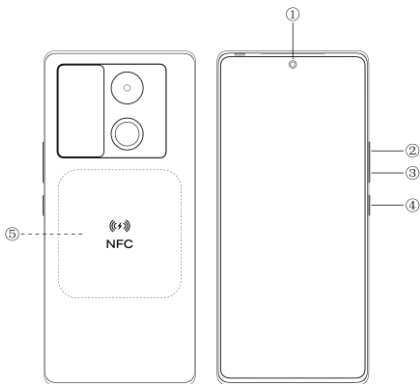
X6851B User Manual (C)

Exploded diagram specification



1	TP LCM	2	FRONT CAM
3	FRONT VC	4	FRONT HSG ASSY
5	RECEIVER	6	MAIN CAM COP
7	MAIN CAM	8	FRONT CONN A
9	WJ BACK CAM 2M	10	MAIN PCB
11	FCAM COP	12	PMIC COP
13	2M CAM COP	14	UP FRAME
15	MAIN PCB GRAPHITE	16	SCREW ASM
17	BAT SUPPORT BRA	18	BAT COVER
19	BAT SCREW	20	CAM DECO
21	CAM 2M LENS	22	MAIN CAM LENS
23	TWO COLOR FLASH	24	CON MYLAR
25	CAM RUBBER 2M	26	SPK GRAPHITE
27	LOW FRAME	28	FP HARD FOAM
29	FLASH FPC	30	SPK
31	RF-LINE2	32	RF-LINE1
33	WIRELESS NFC	34	SUB PCB
35	FRONT CONN A	36	MOTO
37	SPK FPC	38	100W BATTERY
39	LCM RUBBER	40	USB RUBBER
41	RF MYLAR	42	SIM
43	LCM GRAPHITE	44	FLASH FRAME
45	XH BACK CAM 2M		

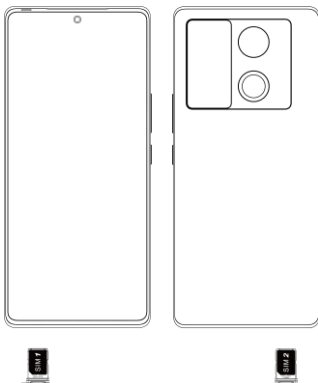
Know your phone



1. Front camera
2. Volume + button
3. Volume - button
4. Power button
5. NFC & Wireless charging

SIM/SD card installation

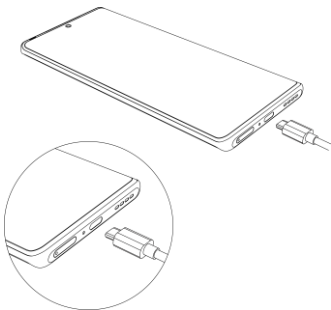
1. Power off your phone.
2. Refer to the following picture for SIM/SD card installation.



Charging the phone

You can charge your phone with a charger or by connecting it to a computer using a USB cable (comes with the phone).

Use Infinix chargers and cables only. Other chargers or cables may damage the device. This will invalidate your phone warranty.



FCC Caution

1. This device complies with Part 15 of the FCC Rules. Operation is subject to the following two conditions:

(1) This device may not cause harmful interference.

(2) This device must accept any interference received, including interference that may cause undesired operation.

2. Changes or modifications not expressly approved by the party responsible for compliance could void the user's authority to operate the equipment.

3. When the device is charging through Reverse Wireless Charging, a distance of more than 20 cm shall be kept between you and the device.

Information to the user.

Note: This equipment has been tested and found to comply with the limits for a Class B digital device, pursuant to part 15 of the FCC Rules. These limits are designed to provide reasonable protection against harmful interference in a residential installation. This equipment generates uses and can radiate radio frequency energy and, if not installed and used in accordance with the instructions, may cause harmful interference to radio communications. However, there is no guarantee that interference will not occur in a particular installation. If this equipment does cause harmful interference to radio or television reception, which can be determined by turning the equipment off and on, the user is encouraged to try to correct the interference by one or more of the following measures:

- Reorient or relocate the receiving antenna.

- Increase the separation between the equipment and receiver.

- Connect the equipment into an outlet on a circuit different from that to which the receiver is connected.

- Consult the dealer or an experienced radio/TV technician for help.

Specific Absorption Rate (SAR) information:

This mobile phone meets the government's requirements for exposure to radio waves. The guidelines are based on standards that were developed by independent scientific organizations through periodic and thorough evaluation of scientific studies. The standards include a substantial safety margin designed to assure the safety of all persons regardless of age or health.

FCC RF Exposure Information and Statement The SAR limit of USA (FCC) is 1.6 W/kg averaged over one gram of tissue. Device types: X6851B(FCC ID: 2AIZN-X6851B) has also been tested against this SAR limit. The highest SAR

value reported under this standard during product certification for use at the ear is 1.002 W/kg and when properly worn on the body is 0.685 W/kg.

Body-worn Operation

This device was tested for typical body-worn operations. To comply with RF exposure requirements, a minimum separation distance of 1.0cm must be maintained between the user's body and the handset, including the antenna. Third-party belt-clips, holsters, and similar accessories used by this device should not contain any metallic components. Body-worn accessories that do not meet these requirements may not comply with RF exposure requirements and should be avoided. Use only the supplied or an approved antenna.

For DTS patents, see <http://patents.dts.com>. Manufactured under license from DTS Licensing Limited. DTS, the Symbol, & DTS and the Symbol together are registered trademarks or trademarks of DTS, Inc. in the United States and/or other countries. © DTS, Inc. All Rights Reserved.



Operating System: Android™
Android is a trademark of Google LLC.