

INFINIX MOBILITY LIMITED
Address: FLAT N 16/F BLOCK B UNIVERSAL INDUSTRIAL CENTRE 19-25 SHAN MEI STREET FOTAN
NT, Hong Kong
Tel.: +86-0755-61803856 Fax:+86-755-33979211
E-mail: jerry.liu@infinixmobility.com

Product Similarity Declaration

Date: 2025-05-30

FEDERAL COMMUNICATIONS COMMISSIONS

Authorization and Evaluation Division

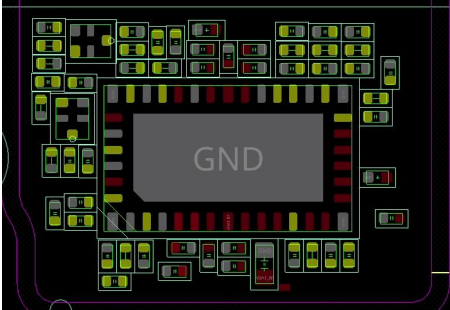
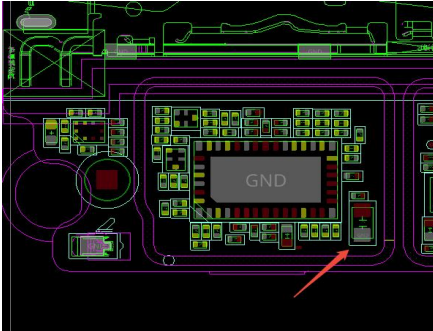
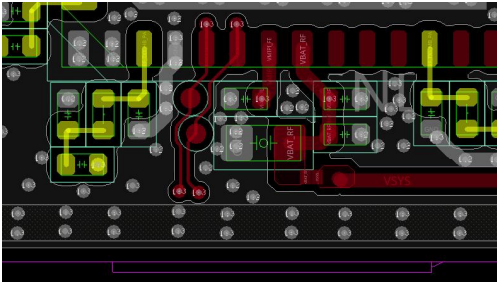
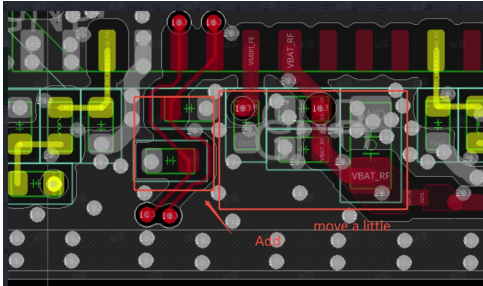
7435 Oakland Mills Road

Columbia, MD 21046

Subject: Agent Authorization

Dear Sir/Madam,

We, INFINIX MOBILITY LIMITED hereby declare that we have a product named as Mobile Phone (model: X6726B, FCC ID: 2AIZN-X6726B) was tested by Bay Area Compliance Laboratories Corp. (Shenzhen), Meanwhile, For our marketing purpose, the model X6726B will have two configurations. The differences between the two configurations are shown in the following table:

Configuration 1	Configuration 2
	
	
	Add a parallel matching of 10uF(C3810)
	Add 2 parallel matching of 7.5uF (C6466, C6465)

INFINIX MOBILITY LIMITED

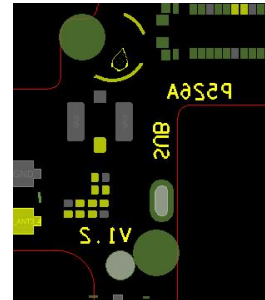
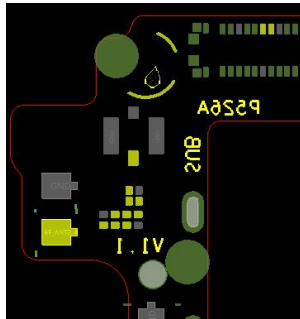
Address: FLAT N 16/F BLOCK B UNIVERSAL INDUSTRIAL CENTRE 19-25 SHAN MEI STREET FOTAN NT, Hong Kong

Tel.: +86-0755-61803856 Fax: +86-755-33979211

E-mail: jerry.liu@infinixmobility.com



Sub board: Add 2 parallel matching of 150pF (C234, C235)



Main board and Sub board Screen printing change from V1.1 to V1.2 . No influence.

Configuration 1



Configuration 2



1. Shape change, barrel radius modification
2. Shape change, barrel bottom platform size expansion
3. Shape change, barrel highlight C angle increase
4. Process change, bottom platform meter and small C angle Highlight processing

INFINIX MOBILITY LIMITED

Address: FLAT N 16/F BLOCK B UNIVERSAL INDUSTRIAL CENTRE 19-25 SHAN MEI STREET FOTAN NT, Hong Kong

Tel.: +86-0755-61803856 Fax: +86-755-33979211

E-mail: jerry.liu@infinixmobility.com

Configuration 1



Configuration 2



All the configurations are identical in electrically. No other changes are made on the configurations. We confirm that all information above is true, and we'll be responsible for all the consequences. Please contact me if you have any question.

Sincerely Yours,

Signature

Jerry Liu

Jerry Liu

Certified Engineer