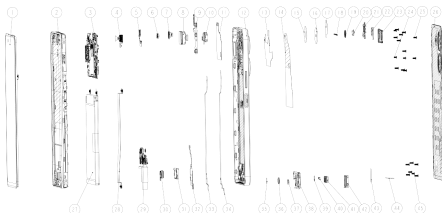


# **Infinix X6711**

## **User Manual (I)**

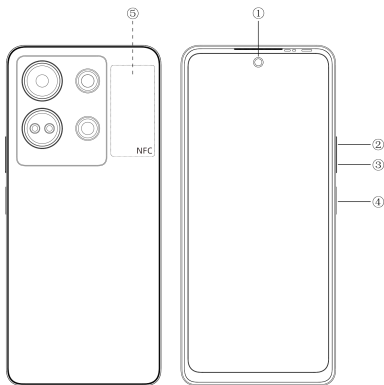
# Explosion diagram specification



1	LCM 6.78FHD ASM	2	F HSG ASM
3	PCBA MB	4	CAM FF 16M
5	FPCA FLASH LED	6	CAM FF QVGA
7	CAM FF 2M	8	CAM AF 108M
9	FPCA SIDEKEY	10	REC
11	NFC	12	MI HSG
13	RAD FILM MB SHIELD	14	RAD FILM MI HOUSING
15	GLA CAM LENS 108M	16	GLA CAM LENS 2M
17	R MAIN CAM COP FOIL	18	REC DECO
19	RUBBER F CAM	20	MAIN WATERPROOF FRAME ASM
21	RCAM LOCATION FRAME ASM	22	F CAM FIXED FRAME ASM
23	CARD HOLDER	24	MC SCREW M1.4*2.5
25	MC SCREW M1.4*3.0	26	CP B-COV ASM
27	BAT	28	FPCA MAIN
29	PCBA SUB	30	MOTOR LINEAR
31	SPK	32	CAP FP
33	COA CABLE 2	34	COA CABLE 1
35	R VICE CAM CON FB	36	R CAM RUBBER 2M
37	R CAM RUBBER QVGA	38	SPK FRAME ASM
39	CAM FPC FOAM 2M	40	RUBBER LT SENSOR

41	RUBBER USB	42	RUBBER EARPHONE
43	ANT FPC MYLAR	44	MB WP FRAME MYLAR
45	MC SCREW M1.4*3.5		

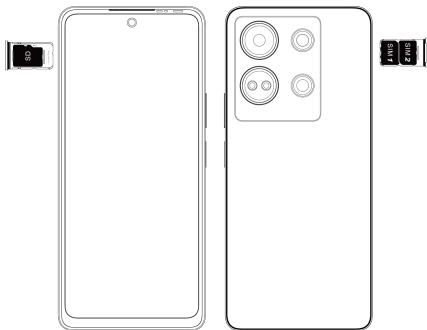
# Know your phone



1. Front camera
2. Volume + key
3. Volume - key
4. Power key & side fingerprint sensor
5. NFC

# SIM/SD card installation

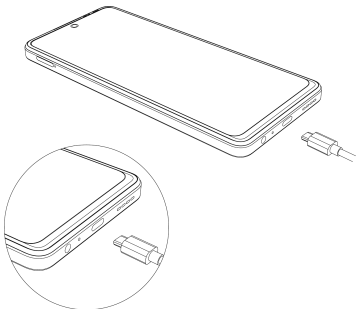
1. Power off mobile.
2. Refer to the following picture for SIM / SD card installation.



# Charging the phone

You can charge your device using a charger or by connecting it to the computer using a USB cable (comes with the phone).

Use only INFINIX charger and cables. Other chargers or cables may damage the device. This will invalidate your phone warranty.



# FCC Caution

## **Labelling requirements.**

This device complies with Part 15 of the FCC Rules. Operation is subject to the following two conditions:

- (1) This device may not cause harmful interference.
- (2) This device must accept any interference received, including interference that may cause undesired operation.

## **Information to user.**

Any changes or modifications not expressly approved by the party responsible for compliance could void the user's authority to operate the equipment.

## **Information to the user.**

Note: This equipment has been tested and found to comply with the limits for a Class B digital device, pursuant to part 15 of the FCC Rules. These limits are designed to provide reasonable protection against harmful interference in a residential installation. This equipment generates uses and can radiate radio frequency energy and, if not installed and used in accordance with the instructions, may cause harmful interference to radio communications. However, there is no guarantee that interference will not occur in a particular installation. If this equipment does cause harmful interference to radio or television reception, which can be determined by turning the equipment off and on, the user is encouraged to try to correct the interference by one or more of the following measures:

- Reorient or relocate the receiving antenna.
- Increase the separation between the equipment and receiver.
- Connect the equipment into an outlet on a circuit different from that to which the receiver is connected.
- Consult the dealer or an experienced radio/TV technician for help.

## **Specific Absorption Rate (SAR) information:**

This mobile phone meets the government's requirements for exposure to radio waves. The guidelines are based on standards that were developed by independent scientific organizations through

periodic and thorough evaluation of scientific studies. The standards include a substantial safety margin designed to assure the safety of all persons regardless of age or health.

FCC RF Exposure Information and Statement The SAR limit of USA (FCC) is 1.6 W/kg averaged over one gram of tissue. Device types: X6711 (FCC ID: 2AIZN-X6711) has also been tested against this SAR limit. The highest SAR value reported under this standard during product certification for use at the ear is 1.121W/kg and when properly worn on the body is 0.763W/kg. This device was tested for typical body-worn operations with the back of the handset kept 10 mm from the body. To maintain compliance with FCC RF exposure requirements, use accessories that maintain a 10 mm separation distance between the user's body and the back of the handset. The use of belt clips, holsters and similar accessories should not contain metallic components in its assembly. The use of accessories that does not satisfy these requirements may not comply with FCC RF exposure requirements, and should be avoided.

### **Body-worn Operation**

This device was tested for typical body-worn operations. To comply with RF exposure requirements, a minimum separation distance of 1.0 cm must be maintained between the user's body and the handset, including the antenna. Third-party belt-clips, holsters, and similar accessories used by this device should not contain any metallic components. Body-worn accessories that do not meet these requirements may not comply with RF exposure requirements and should be avoided. Use only the supplied or an approved antenna.



For DTS patents, see <http://patents.dts.com>. Manufactured under license from DTS Licensing Limited. DTS, the Symbol, & DTS and the Symbol together are registered trademarks or trademarks of DTS, Inc. in the United States and/or other countries. © DTS, Inc. All Rights Reserved.



Operating System: Android™  
Android is a trademark of Google LLC.