

FCC Report

Application Purpose : Original grant
Applicant Name: : INFINIX MOBILITY LIMITED
FCC ID : 2AIZN-X521
Equipment Type : Mobile phone
Model Name : X521
Report Number : FCC16053699-5
Standard(S) : FCC Part 15 Subpart B
Date Of Receipt : May 31, 2016
Date Of Issue : June 16, 2016

Test By : Fall Ma
(Fall Ma)

Reviewed By : Robie Chen
(Robie Chen)

Authorized by : Michal Ling
(Michal Ling)

Prepared by : **Shenzhen WST Testing Technology Co., Ltd.**
1F, No.9 Building, TGK Science & Technology Park Yangtian
Rd., NO.72 Bao'an Dist., Guangdong, China
(Registration Number: 939433)

REPORT REVISE RECORD

Report Version	Revise Time	Issued Date	Valid Version	Notes
V1.0	/	June 16, 2016	Valid	Original Report

Table of Contents	Page
1. GENERAL INFORMATION	4
2. TEST DESCRIPTION	6
2.1 MEASUREMENT UNCERTAINTY	6
2.2 DESCRIPTION OF TEST MODES	7
2.3 CONFIGURATION OF SYSTEM UNDER TEST	8
2.4 DESCRIPTION OF SUPPORT UNITS (CONDUCTED MODE)	8
3. SUMMARY OF TEST RESULTS	10
4. MEASUREMENT INSTRUMENTS	11
5. EMC EMISSION TEST	12
5.1 CONDUCTED EMISSION MEASUREMENT	12
5.1.1 POWER LINE CONDUCTED EMISSION LIMITS	12
5.1.2 TEST PROCEDURE	13
5.1.3 DEVIATION FROM TEST STANDARD	13
5.1.4 TEST SETUP	13
5.1.5 EUT OPERATING CONDITIONS	13
5.1.6 TEST RESULTS	14
5.2 RADIATED EMISSION MEASUREMENT	20
5.2.1 RADIATED EMISSION LIMITS	20
5.2.2 TEST PROCEDURE	21
5.2.3 DEVIATION FROM TEST STANDARD	21
5.2.4 TEST SETUP	22
5.2.5 EUT OPERATING CONDITIONS	22
5.2.5.1 TEST RESULTS (BETWEEN 30M – 1000 MHZ)	23
5.2.5.2 TEST RESULTS(1GHZ TO 6GHZ)	29
12. EUT TEST PHOTO	32
13. PHOTOGRAPHS OF EUT	34

1. GENERAL INFORMATION

Test Model	X521
Applicant	INFINIX MOBILITY LIMITED
Address	RMS 05-15, 13A/F SOUTH TOWER WORLD FINANCE CTR HARBOUR CITY 17 CANTON RD TST KLN HONG KONG
Manufacturer	SHENZHEN TECNO TECHNOLOGY CO.,LTD.
Address	1-4th Floor,3rd Building,Pacific Industrial Park,No.2088,Shenyan Road,Yantian District,Shenzhen,Guangdong,China
Equipment Type	Mobile phone
Brand Name	Infinix
Hardware	X521-J5086-B1-M-20160502
Software	V1.2
Battery information:	Li-ion Battery : BL-30QX Voltage: 3.8V Capacity: 3000mAh Limited Charge Voltage: 4.35V
Adapter Information:	Adapter: A88-501500 Input: AC 100-240V 50-60Hz 0.35A Output: DC 5V 1.5A
Data of receipt	May 31, 2016
Date of test	June 01, 2015, 2016 to June 11, 201
Deviation	None
Condition of Test Sample	Normal

We hereby certify that:

All measurement facilities used to collect the measurement data are located at

1F, No. 9 Building, TGK Science & Technology Park Yangtian Rd., NO. 72 Bao'an Dist., Guangdong, China

The data evaluation, test procedures, and equipment configurations shown in this report were made in accordance with the procedures given in ANSI C 63.4:2009. The sample tested as described in this report is in compliance with the FCC Rules Part 15 Subpart B.

The test results of this report relate only to the tested sample identified in this report.

2. TEST DESCRIPTION

2.1 MEASUREMENT UNCERTAINTY

The reported uncertainty of measurement $y \pm U$, where expanded uncertainty U is based on a standard uncertainty multiplied by a coverage factor of $k=2$, providing a level of confidence of approximately **95 %** .

No.	Item	Uncertainty
1	Conducted Emission Test	$\pm 3.2\text{dB}$
2	RF power, conducted	$\pm 0.16\text{dB}$
3	Spurious emissions, conducted	$\pm 0.21\text{dB}$
4	All emissions, radiated(<1G)	$\pm 4.7\text{dB}$
5	All emissions, radiated(>1G)	$\pm 4.7\text{dB}$
6	Temperature	$\pm 0.5^{\circ}\text{C}$
7	Humidity	$\pm 2\%$

2.2 DESCRIPTION OF TEST MODES

To investigate the maximum EMI emission characteristics generated from EUT, the test system was pre-scanning tested based on the consideration of following EUT operation mode or test configuration mode which possibly have effect on EMI emission level. Each of these EUT operation mode(s) or test configuration mode(s) mentioned above was evaluated respectively.

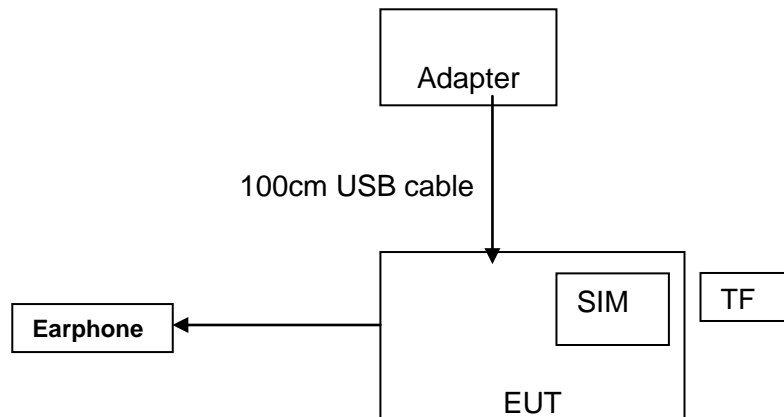
Pretest Mode	Description
Mode 1	Video Recording
Model 2	Video Playing
Mode 3	Exchange data with computer

For Conducted Emission	
Final Test Mode	Test with Keyboard and Mouse
Mode 1	Video Recording
Model 2	Video Playing
Mode 3	Exchange data with computer

For Radiated Emission	
Final Test Mode	Test with Keyboard and Mouse
Mode 1	Video Recording
Model 2	Video Playing
Mode 3	Exchange data with computer

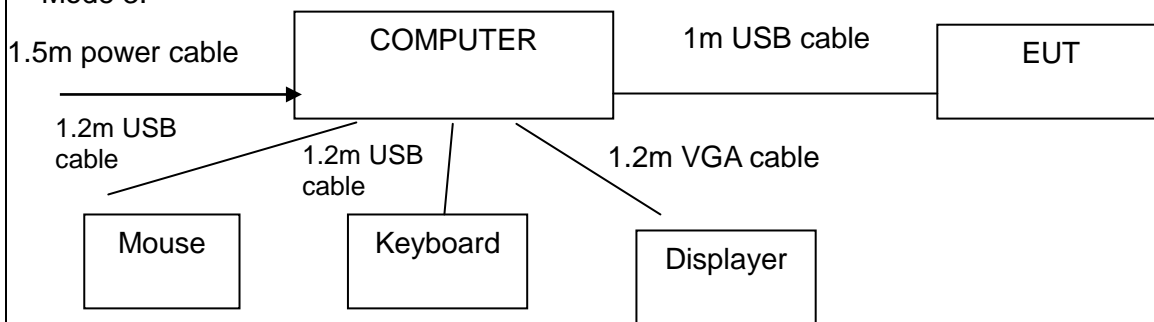
2.3 CONFIGURATION OF SYSTEM UNDER TEST

Mode 1&2:



(EUT: Mobile phone)

Mode 3:



(EUT: Mobile phone)

I/O Port of EUT			
I/O Port Type	Q'TY	Cable	Tested with
Power	1	1m USB cable, unshielded	1
Earphone	1	1m USB cable, unshielded	1

2.4 DESCRIPTION OF SUPPORT UNITS (CONDUCTED MODE)

The EUT has been tested as an independent unit together with other necessary accessories or support units. The following support units or accessories were used to form a representative test configuration during the tests.

Item	Equipment	Mfr/Brand	Model/Type No.	Series No.	Note
1	Adapater	/	XY-AP120200	/	/
2	Keyboard	HP	SK-2880	435302-AA-	/
3	Mouse	DELL	MS111-1	/	/

Note:

- (1) The support equipment was authorized by Declaration of Confirmation.
- (2) For detachable type I/O cable should be specified the length in cm in 『Length』 column.

3. SUMMARY OF TEST RESULTS

Test procedures according to the technical standards:

FCC Part15 , Subpart B			
Standard Section	Test Item	Judgment	Remark
15.107	CONDUCTED EMISSION	PASS	
15.109	RADIATED EMISSION	PASS	

NOTE:

(1)" N/A" denotes test is not applicable in this test report.

4. MEASUREMENT INSTRUMENTS

Kind of Equipment	Manufacturer	Type No.	Serial No.	Last Calibrated	Calibrated until
ESCI Test Receiver	R&S	ESCI	100005	08/19/2015	08/18/2016
LISN	AFJ	LS16	16010222119	08/19/2015	08/18/2016
LISN(EUT)	Mestec	AN3016	04/10040	08/19/2015	08/18/2016
pre-amplifier	CDSI	PAP-1G18-38	--	08/19/2015	08/18/2016
System Controller	CT	SC100	-	08/19/2015	08/18/2016
Bi-log Antenna	Chase	CBL6111C	2576	08/19/2015	08/18/2016
Spectrum analyzer	R&S	FSU26	200409	08/19/2015	08/18/2016
Horn Antenna	SCHWARZBECK	9120D	1141	08/19/2015	08/18/2016
Bi-log Antenna	SCHWABEBECK	VULB9163	9163/340	08/19/2015	08/18/2016
Pre Amplifier	H.P.	HP8447E	2945A02715	10/13/2014	10/12/2016
9*6*6 Anechoic	--	--	--	08/21/2015	08/20/2016

5. EMC EMISSION TEST

5.1 CONDUCTED EMISSION MEASUREMENT

5.1.1 POWER LINE CONDUCTED EMISSION Limits (Frequency Range 150KHz-30MHz)

FREQUENCY (MHz)	Class A (dBuV)		Class B (dBuV)		Standard
	Quasi-peak	Average	Quasi-peak	Average	
0.15 -0.5	79.00	66.00	66 - 56 *	56 - 46 *	FCC
0.50 -5.0	73.00	60.00	56.00	46.00	FCC
5.0 -30.0	73.00	60.00	60.00	50.00	FCC

Note:

- (1) The tighter limit applies at the band edges.
- (2) The limit of " * " marked band means the limitation decreases linearly with the logarithm of the frequency in the range.

The following table is the setting of the receiver

Receiver Parameters	Setting
Attenuation	10 dB
Start Frequency	0.15 MHz
Stop Frequency	30 MHz
IF Bandwidth	9 kHz

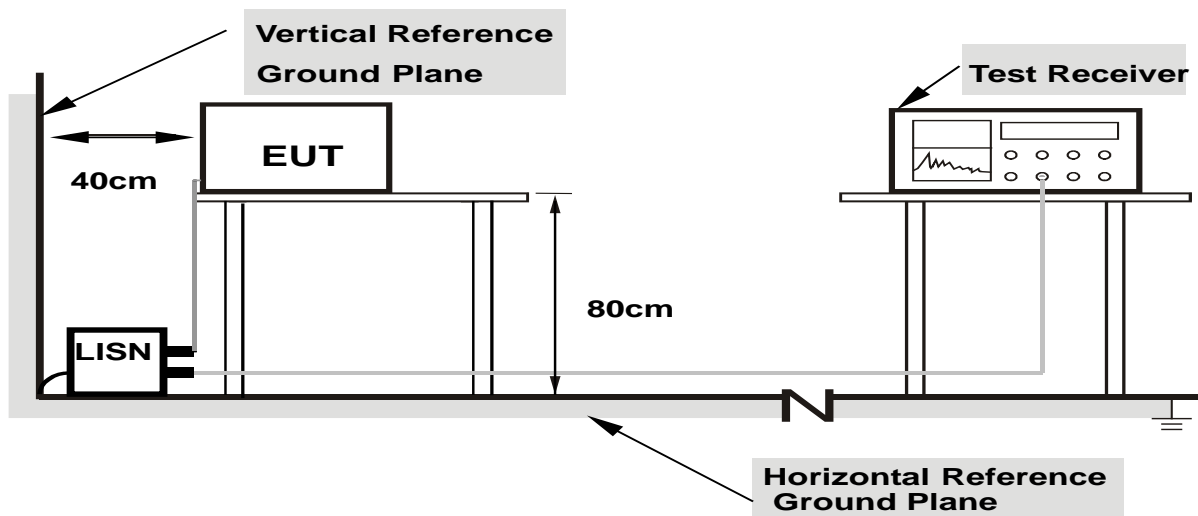
5.1.2 TEST PROCEDURE

- The EUT was placed 0.4 meters from the horizontal ground plane with EUT being connected to the power mains through a line impedance stabilization network (LISN). All other support equipments powered from additional LISN(s). The LISN provide 50 Ohm/ 50uH of coupling impedance for the measuring instrument.
- Interconnecting cables that hang closer than 40 cm to the ground plane shall be folded back and forth in the center forming a bundle 30 to 40 cm long.
- I/O cables that are not connected to a peripheral shall be bundled in the center. The end of the cable may be terminated, if required, using the correct terminating impedance. The overall length shall not exceed 1 m.
- LISN at least 80 cm from nearest part of EUT chassis.
- For the actual test configuration, please refer to the related Item –EUT Test Photos.

5.1.3 DEVIATION FROM TEST STANDARD

No deviation

5.1.4 TEST SETUP



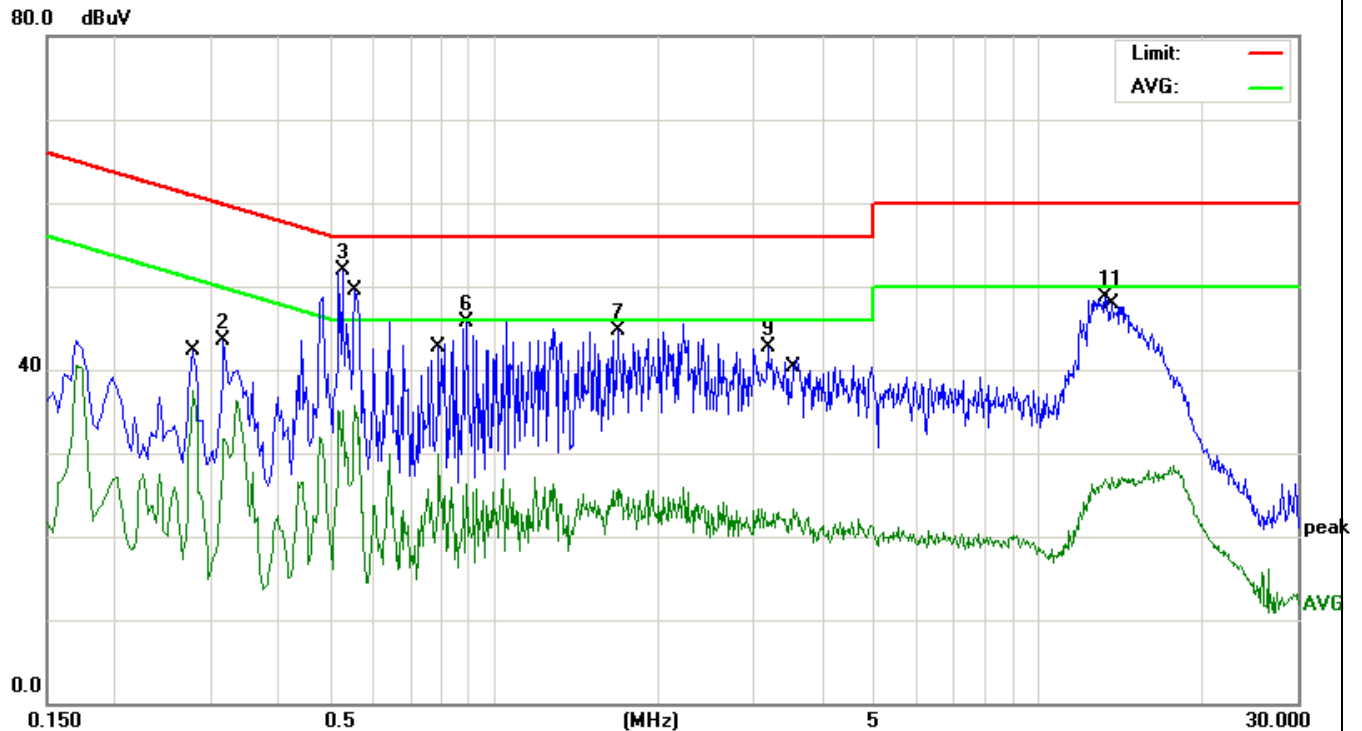
**Note: 1.Support units were connected to second LISN.
2.Both of LISNs (AMN) are 80 cm from EUT and at least 80 from other units and other metal planes**

5.1.5 EUT OPERATING CONDITIONS

The EUT was configured for testing in a typical fashion (as a customer would normally use it). The EUT has been programmed to continuously transmit during test. This operating condition was tested and used to collect the included data.

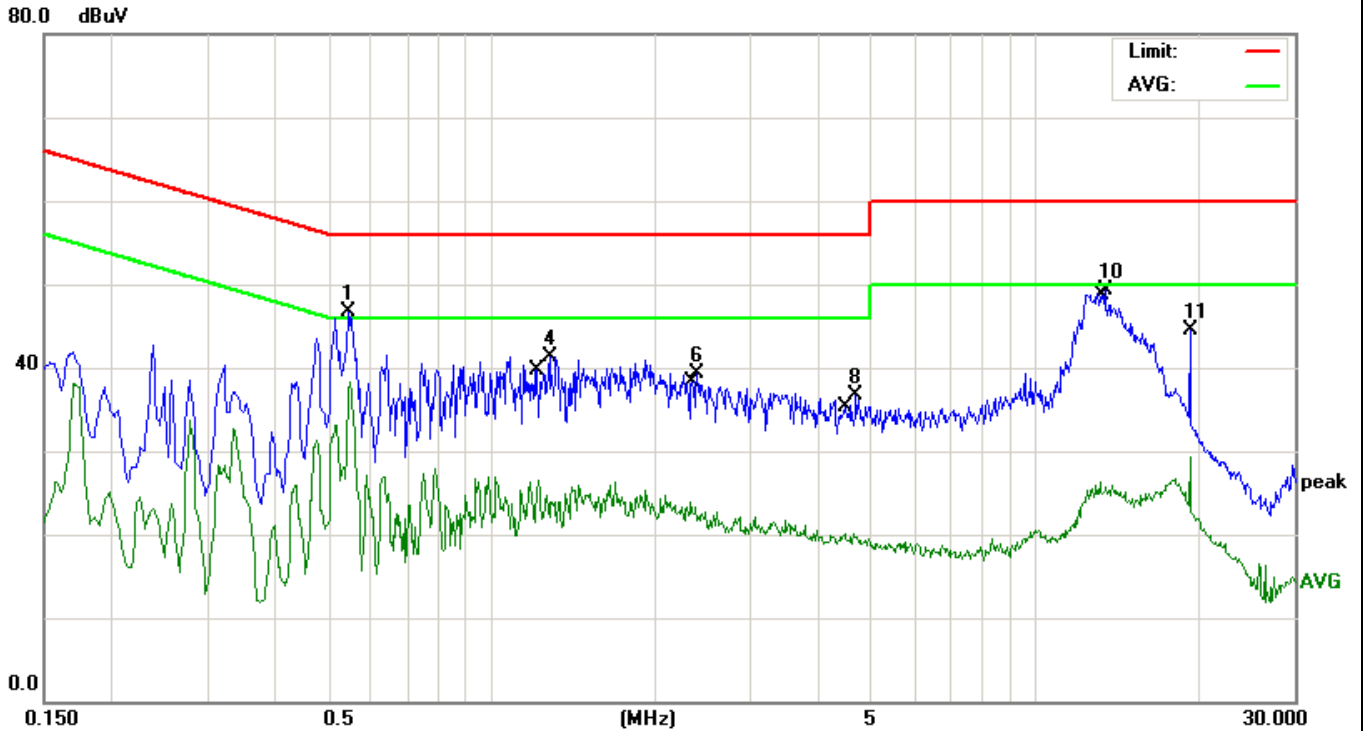
5.1.6 TEST RESULTS

EUT	Mobile phone	Model Name	X521
Temperature	26 °C	Relative Humidity	54%
Pressure	1010hPa	Phase	L
Test Date	June 01, 2016	Test Mode	Mode 1



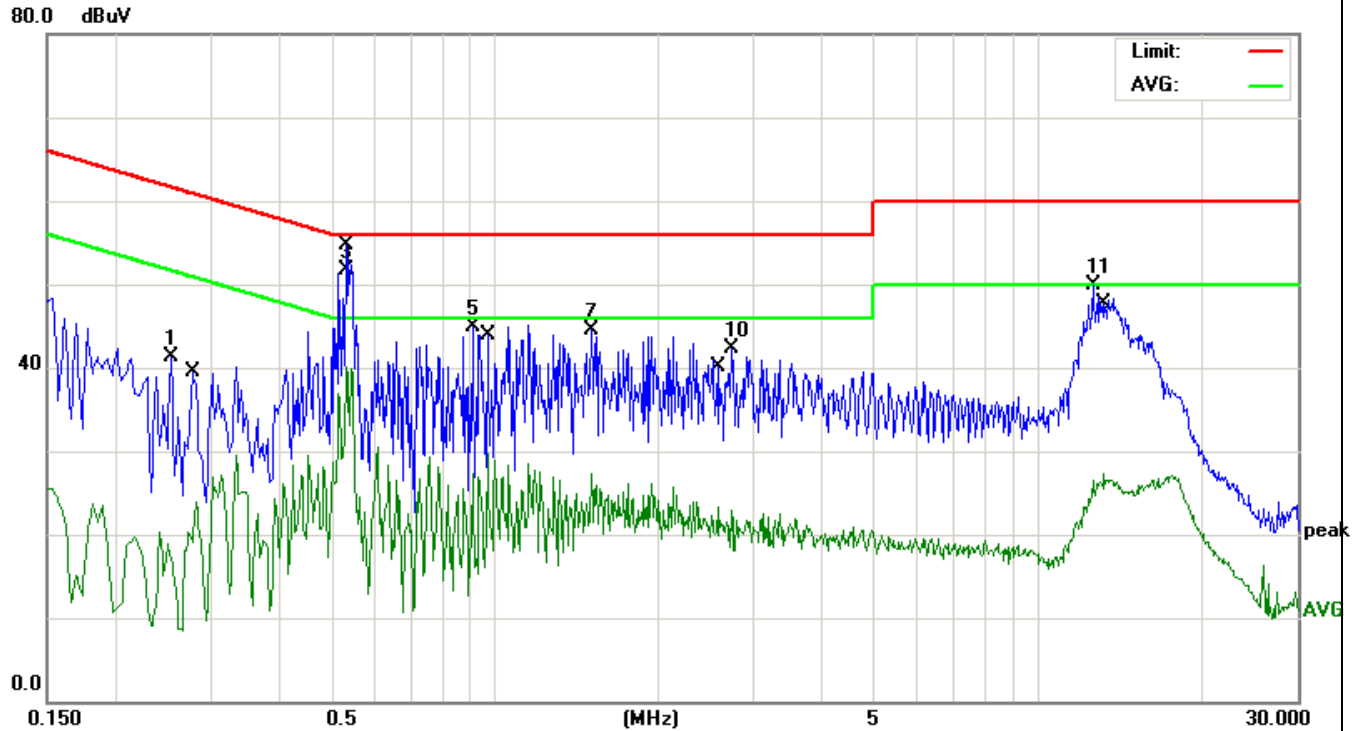
No.	Mk.	Freq.	Reading Level	Correct Factor	Measurement	Limit	Over	
		MHz	dBuV	dB	dBuV	dBuV	dB	Detector
1		0.2779	27.04	10.43	37.47	50.88	-13.41	AVG
2		0.3180	33.06	10.42	43.48	59.76	-16.28	peak
3	*	0.5260	41.54	10.40	51.94	56.00	-4.06	peak
4		0.5540	25.30	10.39	35.69	46.00	-10.31	AVG
5		0.7900	19.62	10.37	29.99	46.00	-16.01	AVG
6		0.8860	35.30	10.35	45.65	56.00	-10.35	peak
7		1.6820	34.31	10.31	44.62	56.00	-11.38	peak
8		1.6820	15.44	10.31	25.75	46.00	-20.25	AVG
9		3.1860	32.43	10.27	42.70	56.00	-13.30	peak
10		3.5380	13.05	10.26	23.31	46.00	-22.69	AVG
11		13.2820	38.47	10.16	48.63	60.00	-11.37	peak
12		13.6500	16.96	10.16	27.12	50.00	-22.88	AVG

EUT	Mobile phone	Model Name	X521
Temperature	26 °C	Relative Humidity	54%
Pressure	1010hPa	Phase	N
Test Date	June 01, 2016	Test Mode	Mode 1



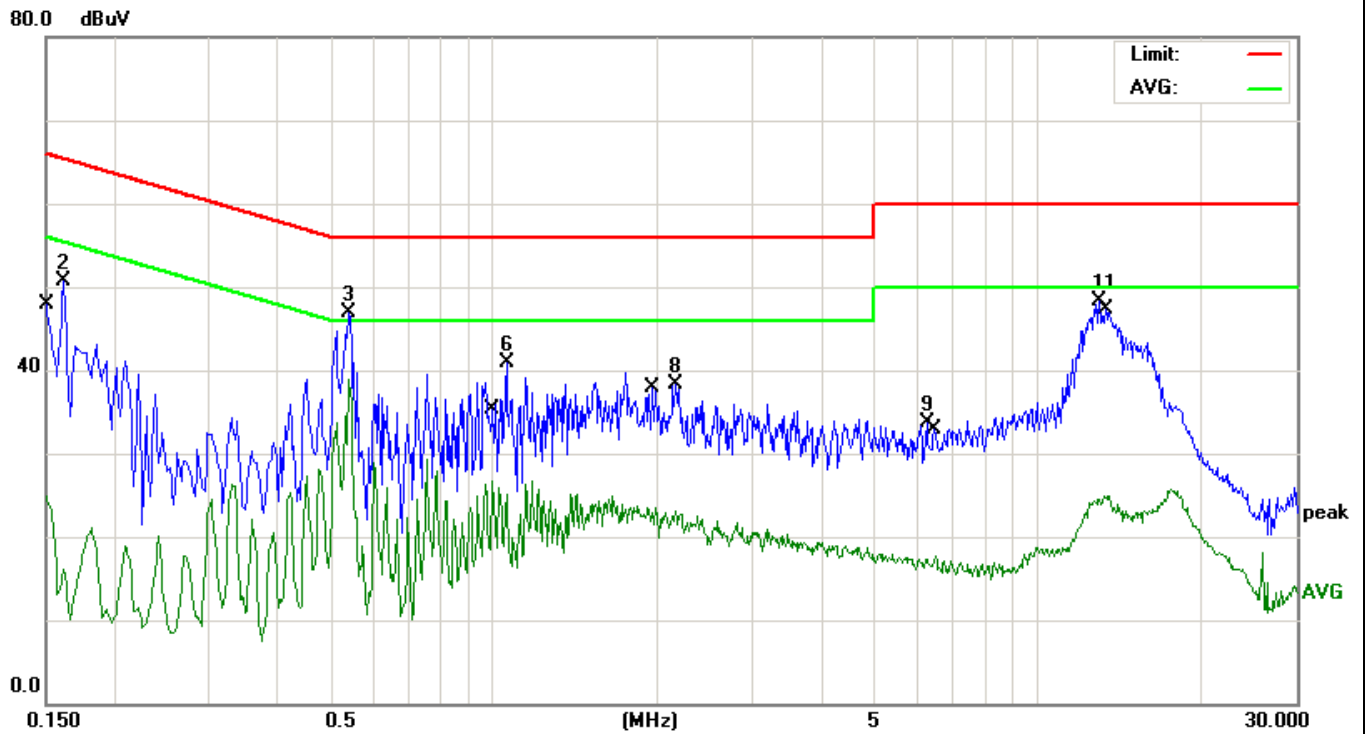
No.	Mk.	Freq.	Reading Level	Correct Factor	Measurement	Limit	Over	
		MHz	dBuV	dB	dBuV	dBuV	dB	Detector
1		0.5460	36.41	10.39	46.80	56.00	-9.20	peak
2	*	0.5500	27.96	10.39	38.35	46.00	-7.65	AVG
3		1.2180	16.15	10.33	26.48	46.00	-19.52	AVG
4		1.2780	30.96	10.33	41.29	56.00	-14.71	peak
5		2.3260	13.60	10.28	23.88	46.00	-22.12	AVG
6		2.3900	28.95	10.28	39.23	56.00	-16.77	peak
7		4.4580	9.89	10.24	20.13	46.00	-25.87	AVG
8		4.6779	26.37	10.24	36.61	56.00	-19.39	peak
9		13.1940	16.22	10.16	26.38	50.00	-23.62	AVG
10		13.4180	39.18	10.16	49.34	60.00	-10.66	peak
11		19.2500	34.40	10.12	44.52	60.00	-15.48	peak
12		19.2500	19.21	10.12	29.33	50.00	-20.67	AVG

EUT	Mobile phone	Model Name	X521
Temperature	26 °C	Relative Humidity	54%
Pressure	1010hPa	Phase	L
Test Date	June 01, 2016	Test Mode	Mode 2



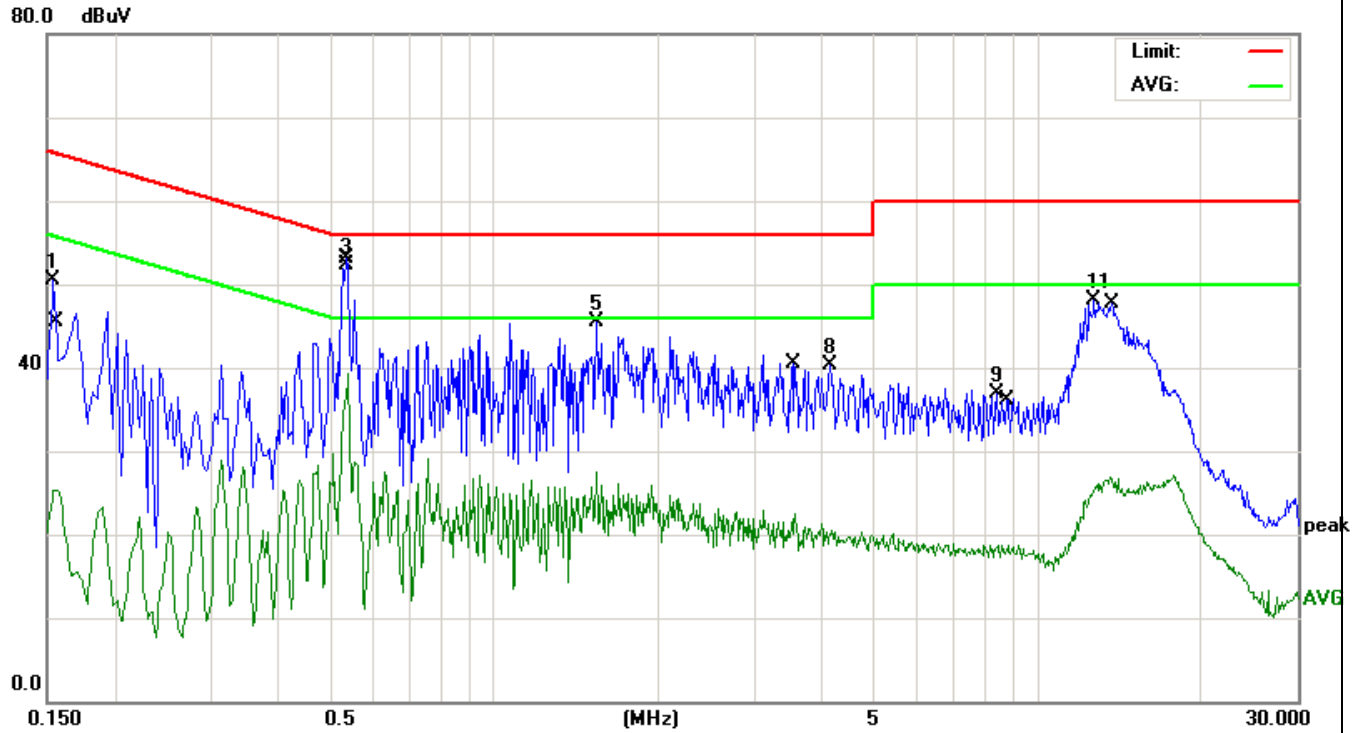
No.	Mk.	Freq. MHz	Reading Level dBuV	Correct Factor dB	Measure- ment dBuV	Limit dBuV	Over dB	Detector
1		0.2540	30.87	10.43	41.30	61.62	-20.32	peak
2		0.2819	13.58	10.42	24.00	50.76	-26.76	AVG
3	*	0.5340	41.23	10.40	51.63	56.00	-4.37	peak
4		0.5340	29.67	10.40	40.07	46.00	-5.93	AVG
5		0.9100	34.65	10.35	45.00	56.00	-11.00	peak
6		0.9700	19.39	10.34	29.73	46.00	-16.27	AVG
7		1.5060	34.14	10.31	44.45	56.00	-11.55	peak
8		1.5060	17.09	10.31	27.40	46.00	-18.60	AVG
9		2.5700	13.04	10.28	23.32	46.00	-22.68	AVG
10		2.7260	32.00	10.28	42.28	56.00	-13.72	peak
11		12.6220	39.66	10.17	49.83	60.00	-10.17	peak
12		13.2580	17.15	10.16	27.31	50.00	-22.69	AVG

EUT	Mobile phone	Model Name	X521
Temperature	26 °C	Relative Humidity	54%
Pressure	1010hPa	Phase	N
Test Date	June 01, 2016	Test Mode	Mode 2



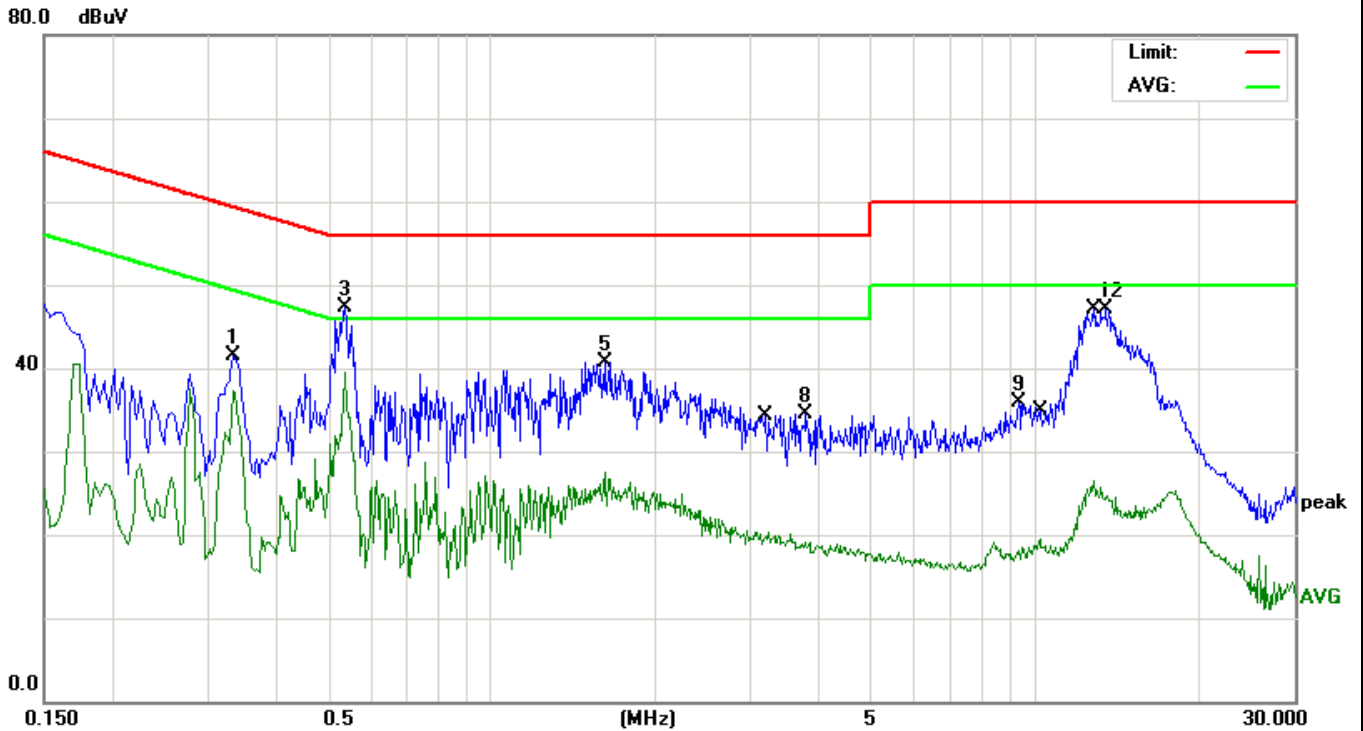
No.	Mk.	Freq.	Reading Level	Correct Factor	Measurement	Limit	Over	
		MHz	dBuV	dB	dBuV	dBuV	dB	Detector
1		0.1516	13.60	10.44	24.04	55.91	-31.87	AVG
2		0.1620	40.28	10.44	50.72	65.36	-14.64	peak
3		0.5420	36.53	10.39	46.92	56.00	-9.08	peak
4	*	0.5420	28.43	10.39	38.82	46.00	-7.18	AVG
5		0.9940	16.42	10.34	26.76	46.00	-19.24	AVG
6		1.0580	30.50	10.34	40.84	56.00	-15.16	peak
7		1.9860	13.23	10.29	23.52	46.00	-22.48	AVG
8		2.1660	27.98	10.29	38.27	56.00	-17.73	peak
9		6.2740	23.48	10.22	33.70	60.00	-26.30	peak
10		6.5020	7.43	10.22	17.65	50.00	-32.35	AVG
11		13.0140	38.12	10.17	48.29	60.00	-11.71	peak
12		13.3220	14.82	10.16	24.98	50.00	-25.02	AVG

EUT	Mobile phone	Model Name	X521
Temperature	26 °C	Relative Humidity	54%
Pressure	1010hPa	Phase	L
Test Date	June 01, 2016	Test Mode	Mode 3



No.	Mk.	Freq. MHz	Reading Level dBuV	Correct Factor dB	Measure- ment dBuV	Limit dBuV	Over dB	Detector
1		0.1539	40.02	10.44	50.46	65.78	-15.32	peak
2		0.1580	14.93	10.44	25.37	55.56	-30.19	AVG
3	*	0.5340	41.96	10.40	52.36	56.00	-3.64	peak
4		0.5380	28.99	10.40	39.39	46.00	-6.61	AVG
5		1.5380	35.14	10.31	45.45	56.00	-10.55	peak
6		1.5380	17.23	10.31	27.54	46.00	-18.46	AVG
7		3.5780	12.14	10.26	22.40	46.00	-23.60	AVG
8		4.1420	30.02	10.25	40.27	56.00	-15.73	peak
9		8.3979	26.77	10.20	36.97	60.00	-23.03	peak
10		8.8100	8.50	10.20	18.70	50.00	-31.30	AVG
11		12.6780	37.92	10.17	48.09	60.00	-11.91	peak
12		13.5900	16.76	10.16	26.92	50.00	-23.08	AVG

EUT	Mobile phone	Model Name	X521
Temperature	26 °C	Relative Humidity	54%
Pressure	1010hPa	Phase	N
Test Date	June 01, 2016	Test Mode	Mode 3



No.	Mk.	Freq.	Reading Level	Correct Factor	Measurement	Limit	Over	
		MHz	dBuV	dB	dBuV	dBuV	dB	Detector
1		0.3339	31.18	10.42	41.60	59.35	-17.75	peak
2		0.3339	26.86	10.42	37.28	49.35	-12.07	AVG
3		0.5380	36.95	10.40	47.35	56.00	-8.65	peak
4	*	0.5380	29.11	10.40	39.51	46.00	-6.49	AVG
5		1.6140	30.41	10.31	40.72	56.00	-15.28	peak
6		1.6140	17.17	10.31	27.48	46.00	-18.52	AVG
7		3.2260	9.95	10.27	20.22	46.00	-25.78	AVG
8		3.7980	24.31	10.25	34.56	56.00	-21.44	peak
9		9.3100	25.77	10.20	35.97	60.00	-24.03	peak
10		10.2220	9.41	10.19	19.60	50.00	-30.40	AVG
11		12.8180	16.35	10.17	26.52	50.00	-23.48	AVG
12		13.4940	36.94	10.16	47.10	60.00	-12.90	peak

5.2 RADIATED EMISSION MEASUREMENT

5.2.1 RADIATED EMISSION LIMITS (Frequency Range 9kHz-1000MHz)

20dBc in any 100 kHz bandwidth outside the operating frequency band. In case the emission fall within the restricted band specified on 15.205(a), then the 15.209(a) limit in the table below has to be followed.

Frequencies (MHz)	Field Strength (micorvolts/meter)	Measurement Distance (meters)
0.009~0.490	2400/F(KHz)	300
0.490~1.705	24000/F(KHz)	30
1.705~30.0	30	30
30~88	100	3
88~216	150	3
216~960	200	3
Above 960	500	3

LIMITS OF RADIATED EMISSION MEASUREMENT (Above 1000MHz)

FREQUENCY (MHz)	Limit (dBuV/m) (at 3M)	
	PEAK	AVERAGE
Above 1000	74	54

Notes:

- (1) The limit for radiated test was performed according to FCC PART 15C.
- (2) The tighter limit applies at the band edges.
- (3) Emission level (dBuV/m)=20log Emission level (uV/m).

Spectrum Parameter	Setting
Attenuation	Auto
Start Frequency	1000 MHz
Stop Frequency	10th carrier harmonic
RB / VB (emission in restricted band)	1 MHz / 1 MHz for Peak, 1 MHz / 10Hz for Average

Receiver Parameter	Setting
Attenuation	Auto
Start ~ Stop Frequency	9kHz~150kHz / RB 200Hz for QP
Start ~ Stop Frequency	150kHz~30MHz / RB 9kHz for QP
Start ~ Stop Frequency	30MHz~1000MHz / RB 120kHz for QP

5.2.2 TEST PROCEDURE

- a. The measuring distance of at 3 m shall be used for measurements at frequency up to 1GHz. For frequencies above 1GHz, any suitable measuring distance may be used.
- b. The EUT was placed on the top of a rotating table 0.8 meters above the ground at a 3 meter open area test site. The table was rotated 360 degrees to determine the position of the highest radiation.
- c. The height of the equipment or of the substitution antenna shall be 0.8 m; the height of the test antenna shall vary between 1 m to 4 m. Both horizontal and vertical polarizations of the antenna are set to make the measurement.
- d. The initial step in collecting conducted emission data is a spectrum analyzer peak detector mode pre-scanning the measurement frequency range. Significant peaks are then marked and then Quasi Peak detector mode re-measured.
- e. If the Peak Mode measured value compliance with and lower than Quasi Peak Mode Limit, the EUT shall be deemed to meet QP Limits and then no additional QP Mode measurement performed.
- f. For the actual test configuration, please refer to the related Item –EUT Test Photos.

Note:

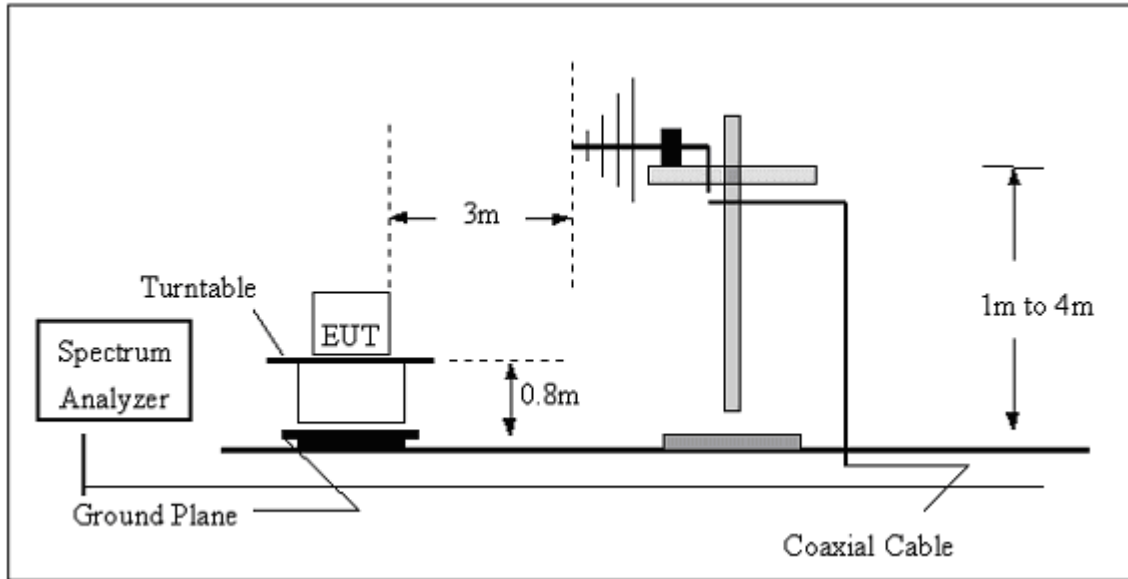
Both horizontal and vertical antenna polarities were tested and performed pretest to three orthogonal axis. The worst case emissions were reported

5.2.3 DEVIATION FROM TEST STANDARD

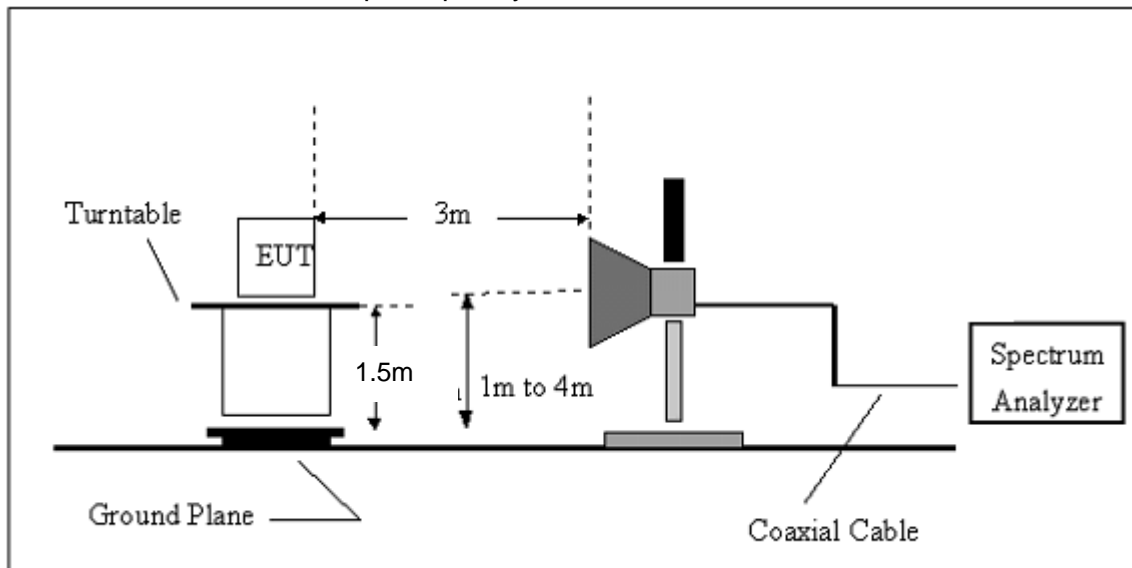
No deviation

5.2.4 TEST SETUP

(A) Radiated Emission Test-Up Frequency 30MHz~1GHz



(B) Radiated Emission Test-Up Frequency Above 1GHz



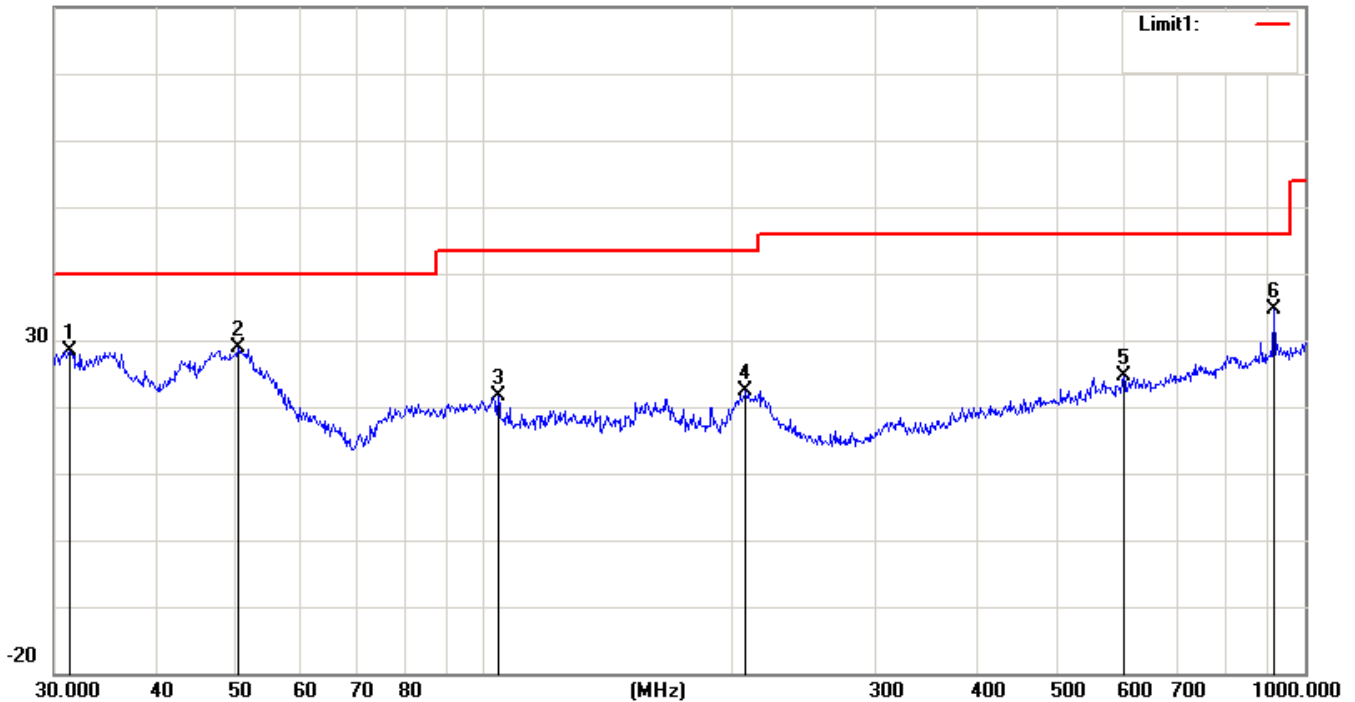
5.2.5 EUT OPERATING CONDITIONS

The EUT tested system was configured as the statements of 2.4 Unless otherwise a special operating condition is specified in the follows during the testing.

5.2.5.1 TEST RESULTS (BETWEEN 30M – 1000 MHZ)

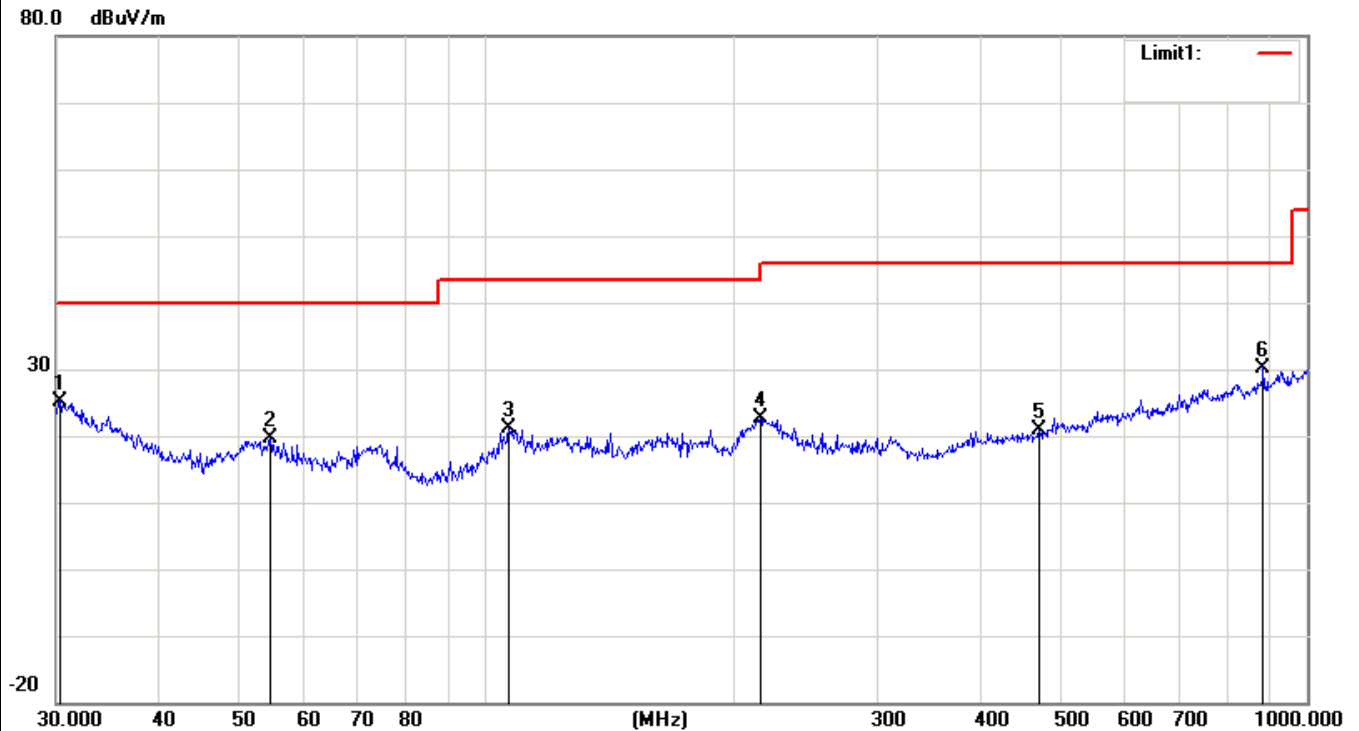
EUT	Mobile phone	Model Name	X521
Temperature	20 °C	Relative Humidity	48%
Pressure	1010 hPa	Polarization :	Horizontal
Test Mode	Mode 1	Test Date	June 01, 2016

80.0 dBuV/m



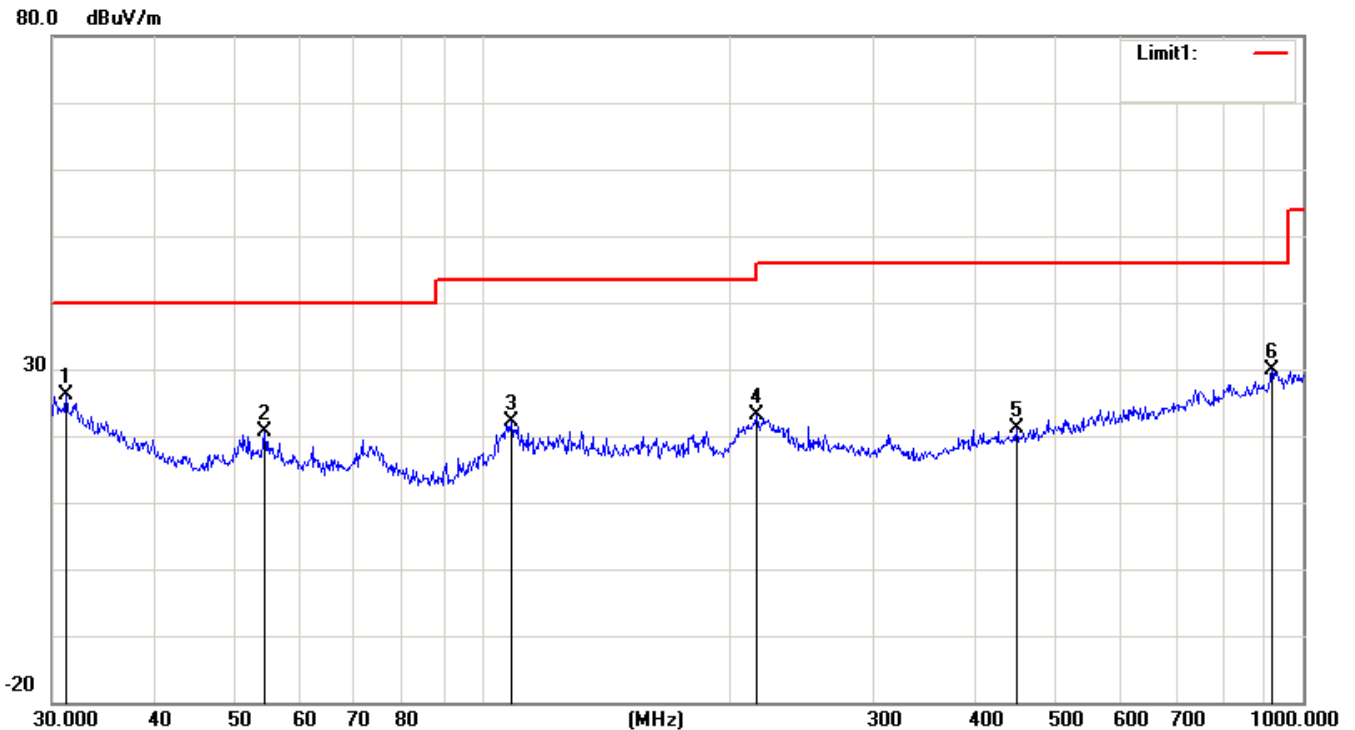
No.	Mk.	Freq.	Reading Level	Correct Factor	Measurement	Limit	Over
		MHz	dBuV	dB	dBuV/m	dBuV/m	dB Detector
1		31.2893	25.81	2.62	28.43	40.00	-11.57 peak
2	*	50.2324	37.98	-9.03	28.95	40.00	-11.05 peak
3		104.1701	26.91	-5.18	21.73	43.50	-21.77 peak
4		208.5803	27.54	-5.13	22.41	43.50	-21.09 peak
5		601.4265	23.57	1.04	24.61	46.00	-21.39 peak
6		916.0687	28.21	6.50	34.71	46.00	-11.29 peak

EUT	Mobile phone	Model Name	X521
Temperature	20 °C	Relative Humidity	48%
Pressure	1010 hPa	Polarization :	Vertical
Test Mode	Mode 1	Test Date	June 01, 2016



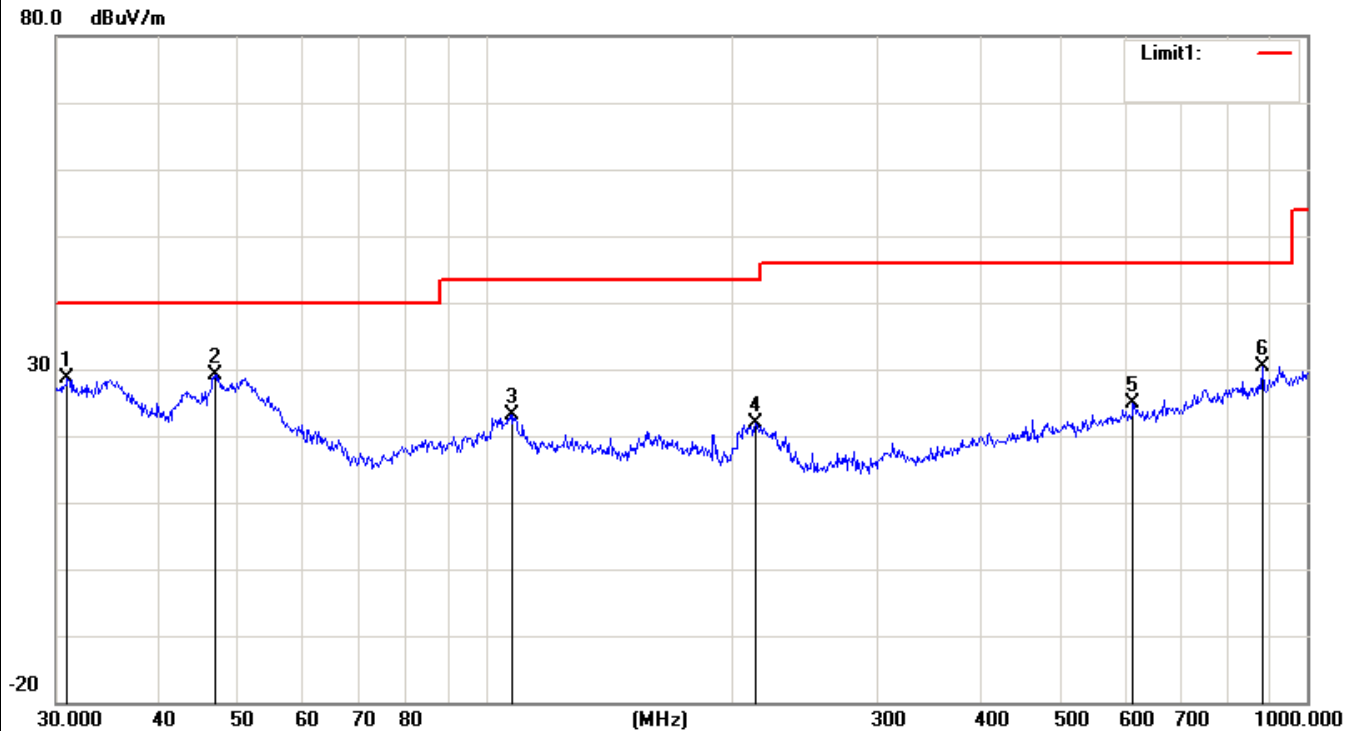
No.	Mk.	Freq.	Reading Level	Correct Factor	Measurement	Limit	Over	
		MHz	dBuV	dB	dBuV/m	dBuV/m	dB	Detector
1	*	30.3173	21.98	3.27	25.25	40.00	-14.75	peak
2		54.6429	29.02	-9.47	19.55	40.00	-20.45	peak
3		106.7587	25.65	-4.47	21.18	43.50	-22.32	peak
4		216.0240	27.98	-5.39	22.59	46.00	-23.41	peak
5		472.1760	22.13	-1.31	20.82	46.00	-25.18	peak
6		884.5029	25.09	5.16	30.25	46.00	-15.75	peak

EUT	Mobile phone	Model Name	X521
Temperature	20 °C	Relative Humidity	48%
Pressure	1010 hPa	Polarization :	Horizontal
Test Mode	Mode 2	Test Date	June 01, 2016



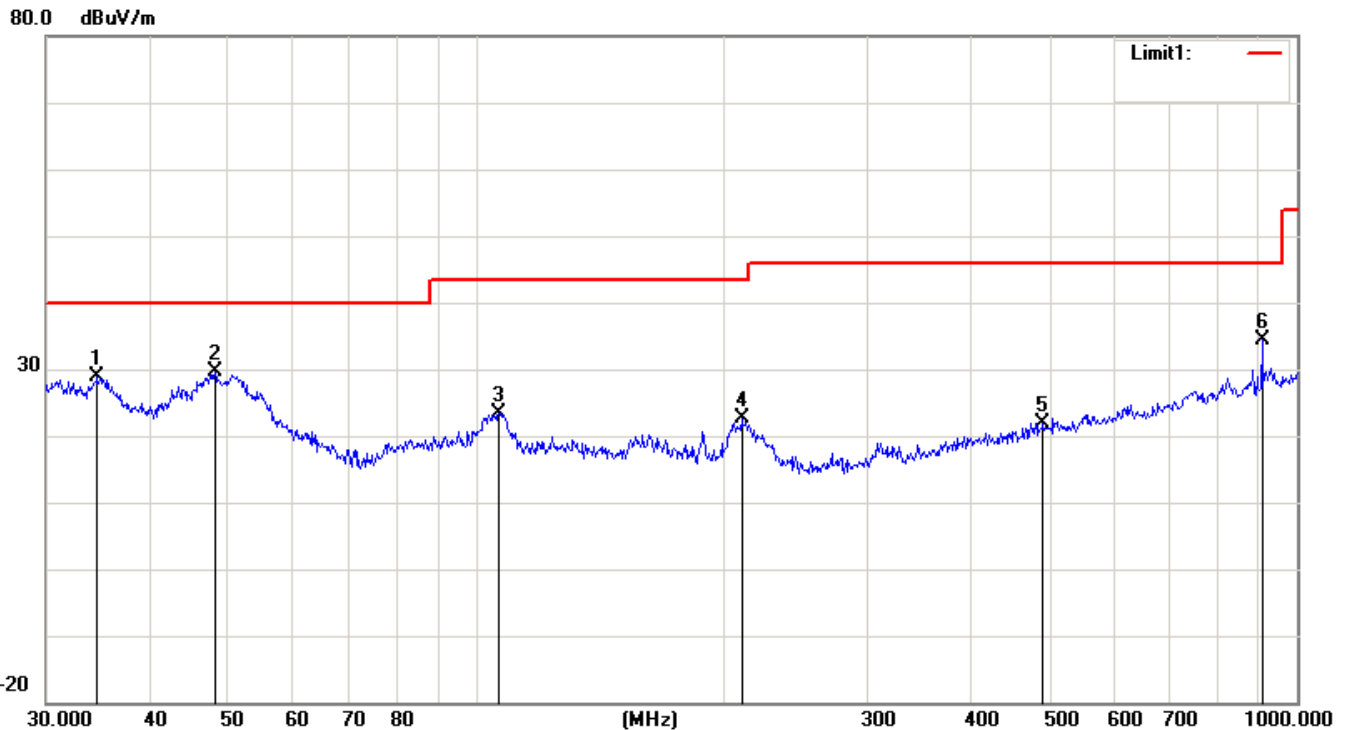
No.	Mk.	Freq.	Reading Level	Correct Factor	Measure-ment	Limit	Over	
		MHz	dBuV	dB	dBuV/m	dBuV/m	dB	Detector
1	*	31.1798	23.38	2.70	26.08	40.00	-13.92	peak
2		54.4516	30.05	-9.44	20.61	40.00	-19.39	peak
3		108.6470	26.11	-3.95	22.16	43.50	-21.34	peak
4		216.0240	28.47	-5.39	23.08	46.00	-22.92	peak
5		447.9822	23.24	-2.11	21.13	46.00	-24.87	peak
6		916.0687	23.49	6.50	29.99	46.00	-16.01	peak

EUT	Mobile phone	Model Name	X521
Temperature	20 °C	Relative Humidity	48%
Pressure	1010 hPa	Polarization :	Vertical
Test Mode	Mode 2	Test Date	June 01, 2016



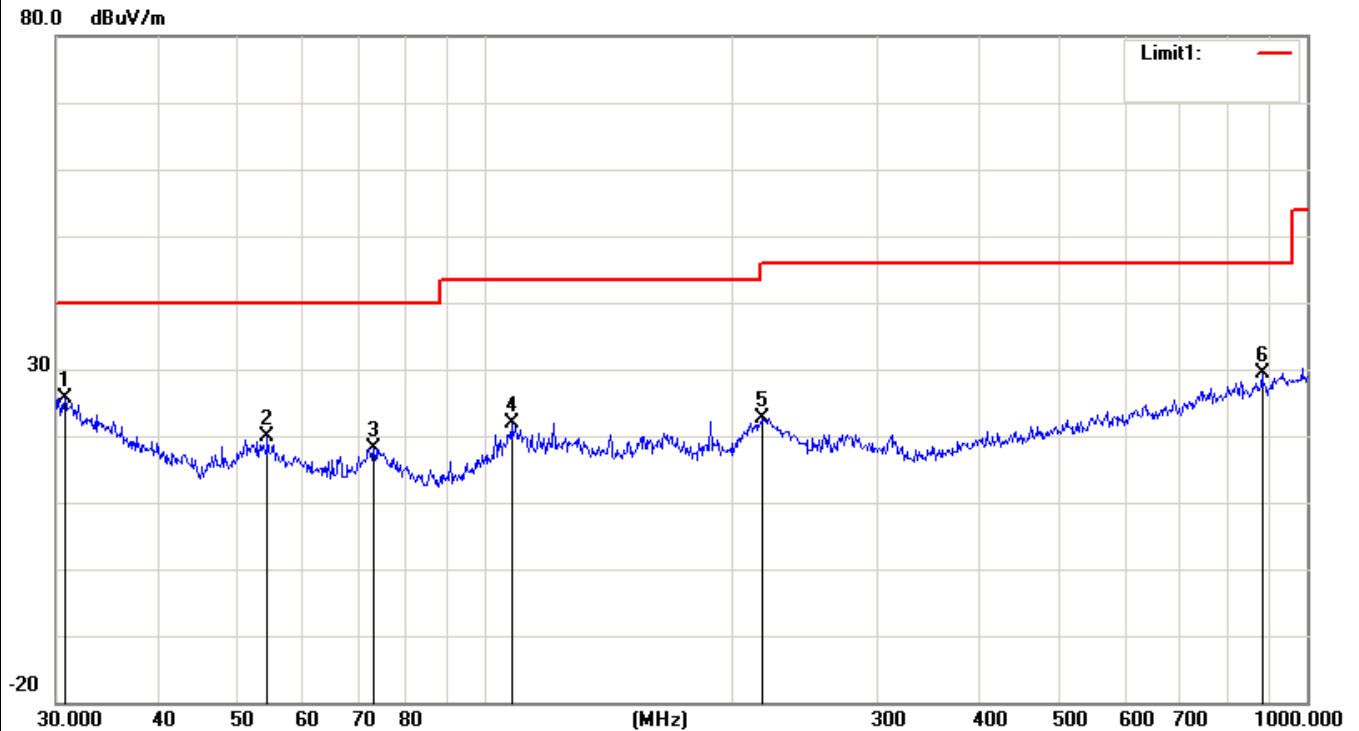
No.	Mk.	Freq. MHz	Reading Level dBuV	Correct Factor dB	Measure- ment dBuV/m	Limit dBuV/m	Over dB	Detector
1		30.9619	25.90	2.85	28.75	40.00	-11.25	peak
2	*	46.8303	36.61	-7.56	29.05	40.00	-10.95	peak
3		107.8877	27.28	-4.16	23.12	43.50	-20.38	peak
4		213.0151	27.14	-5.28	21.86	43.50	-21.64	peak
5		614.2142	23.74	1.24	24.98	46.00	-21.02	peak
6		881.4067	25.40	5.08	30.48	46.00	-15.52	peak

EUT	Mobile phone	Model Name	X521
Temperature	20 °C	Relative Humidity	48%
Pressure	1010 hPa	Polarization :	Horizontal
Test Mode	Mode 3	Test Date	June 01, 2016



No.	Mk.	Freq.	Reading Level	Correct Factor	Measurement	Limit	Over	
		MHz	dBuV	dB	dBuV/m	dBuV/m	dB	Detector
1		34.6385	28.41	0.38	28.79	40.00	-11.21	peak
2	*	48.1626	37.68	-8.17	29.51	40.00	-10.49	peak
3		106.7587	27.95	-4.47	23.48	43.50	-20.02	peak
4		210.7860	27.75	-5.21	22.54	43.50	-20.96	peak
5		490.7447	22.75	-0.89	21.86	46.00	-24.14	peak
6		906.4824	28.32	6.08	34.40	46.00	-11.60	peak

EUT	Mobile phone	Model Name	X521
Temperature	20 °C	Relative Humidity	48%
Pressure	1010 hPa	Polarization :	Vertical
Test Mode	Mode 3	Test Date	June 01, 2016



No.	Mk.	Freq.	Reading Level	Correct Factor	Measurement	Limit	Over	
		MHz	dBuV	dB	dBuV/m	dBuV/m	dB	Detector
1	*	30.7455	22.64	2.99	25.63	40.00	-14.37	peak
2		54.2610	29.26	-9.43	19.83	40.00	-20.17	peak
3		73.1025	25.89	-7.64	18.25	40.00	-21.75	peak
4		107.5101	26.14	-4.27	21.87	43.50	-21.63	peak
5		216.7828	28.13	-5.41	22.72	46.00	-23.28	peak
6		881.4067	24.42	5.08	29.50	46.00	-16.50	peak

5.2.5.2 TEST RESULTS(1GHZ TO 6GHZ)

EUT	Mobile phone	Model Name	X521
Temperature	20 °C	Relative Humidity	48%
Pressure	1010 hPa	Test Mode	Mode 1
Test Date	June 01, 2016		

Freq. (MHz)	Ant. Pol.	Emission Level(dBuV)		Limit 3m(dBuV/m)		Over(dB)	
		PK	AV	PK	AV	PK	AV
1632.45	V	59.10	39.29	74	54	-14.90	-14.71
2829.27	V	58.71	39.20	74	54	-15.29	-14.80
1684.52	H	58.72	39.16	74	54	-15.28	-14.84
2831.6	H	58.90	39.90	74	54	-15.10	-14.10

Remark:

All emissions not reported were more than 20dB below the specified limit or in the noise floor.

Factor = Antenna Factor + Cable Loss – Pre-amplifier.

All the x/y/z orientation has been investigated, and only worst case is presented in this report.

EUT	Mobile phone	Model Name	X521
Temperature	20 °C	Relative Humidity	48%
Pressure	1010 hPa	Test Mode	Mode 2
Test Date	June 01, 2016		

Freq. (MHz)	Ant. Pol. H/V	Emission Level(dBuV)		Limit 3m(dBuV/m)		Over(dB)	
		PK	AV	PK	AV	PK	AV
1583.35	V	60.60	41.73	74	54	-13.40	-12.27
2641.52	V	58.29	40.86	74	54	-15.71	-13.14
1628.42	H	58.99	39.34	74	54	-15.01	-14.66
2810.39	H	59.68	40.68	74	54	-14.32	-13.32

Remark:

All emissions not reported were more than 20dB below the specified limit or in the noise floor.

Factor = Antenna Factor + Cable Loss – Pre-amplifier.

All the x/y/z orientation has been investigated, and only worst case is presented in this report.

EUT	Mobile phone	Model Name	X521
Temperature	20 °C	Relative Humidity	48%
Pressure	1010 hPa	Test Mode	Mode 3
Test Date	June 01, 2016		

Freq. (MHz)	Ant. Pol.	Emission Level(dBuV)		Limit 3m(dBuV/m)		Over(dB)	
	H/V	PK	AV	PK	AV	PK	AV
1577.35	V	60.66	39.76	74	54	-13.34	-14.24
2652.38	V	58.13	39.20	74	54	-15.87	-14.80
1699.33	H	58.56	39.44	74	54	-15.44	-14.56
2739.42	H	58.50	39.50	74	54	-15.50	-14.50

Remark:

All emissions not reported were more than 20dB below the specified limit or in the noise floor.

Factor = Antenna Factor + Cable Loss – Pre-amplifier.

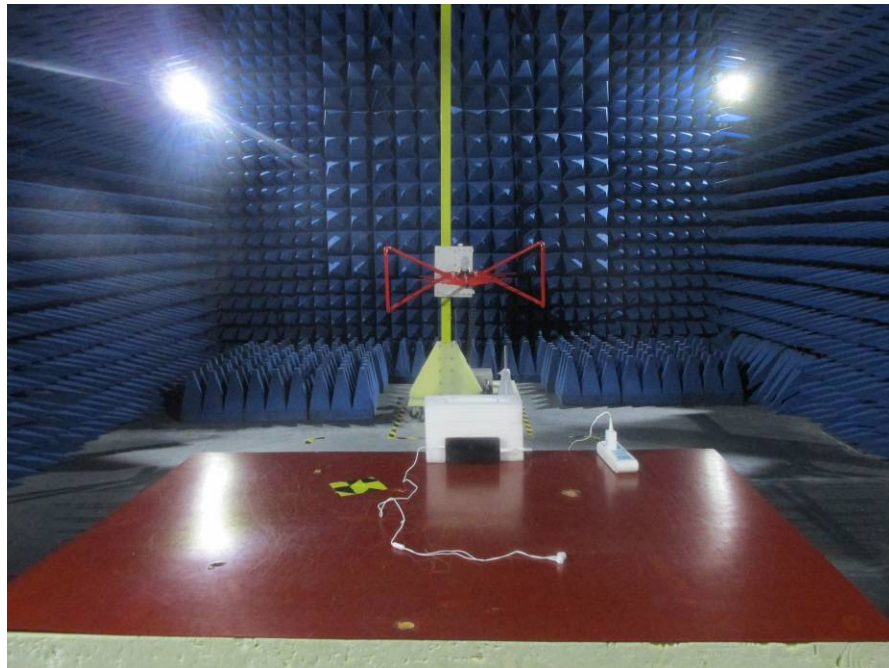
All the x/y/z orientation has been investigated, and only worst case is presented in this report.

6. EUT TEST PHOTO

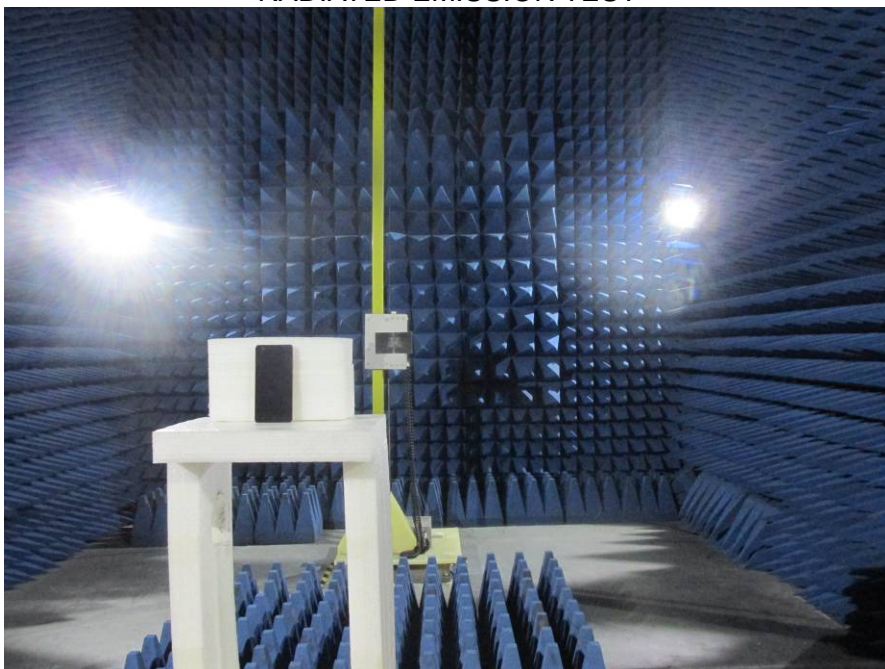
CONDUCTED EMISSION TEST



RADIATED EMISSION TEST



RADIATED EMISSION TEST

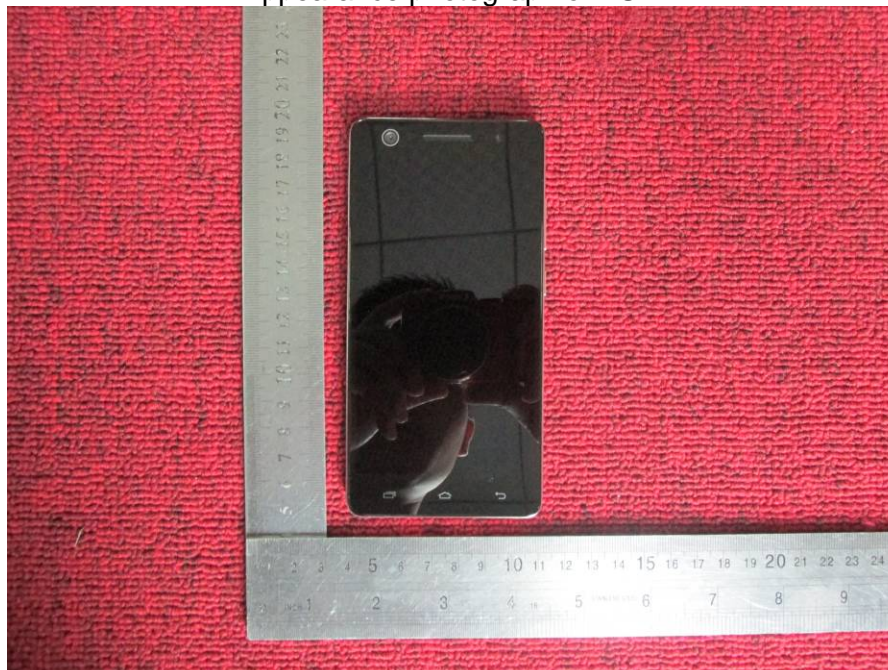


7. PHOTOGRAPHS OF EUT

Appearance photograph of EUT



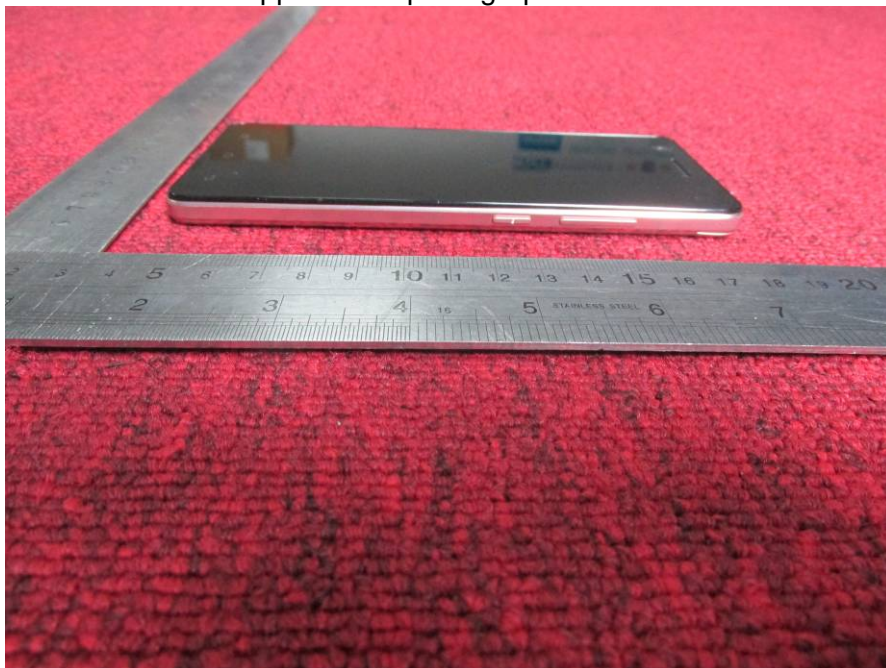
Appearance photograph of EUT



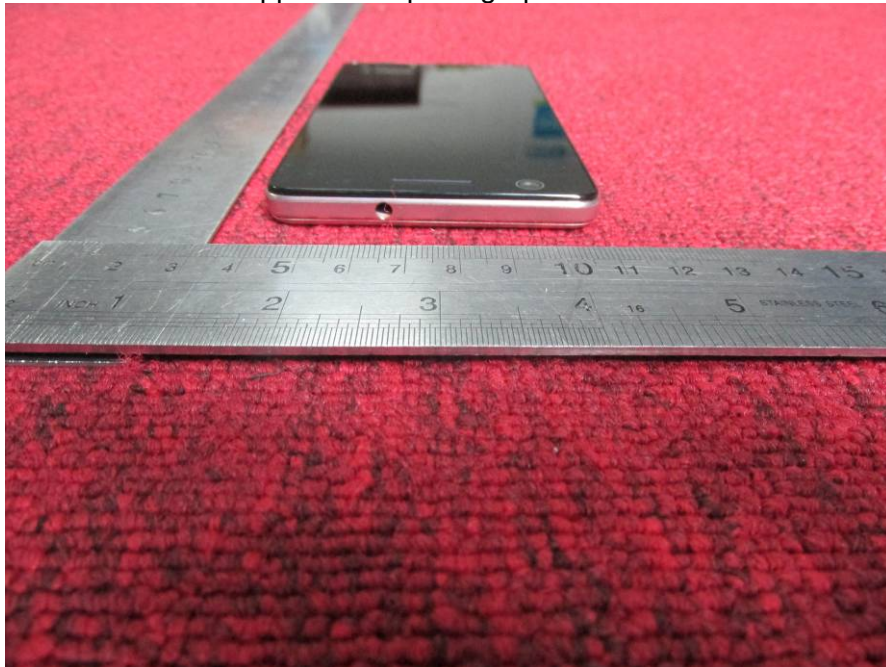
Appearance photograph of EUT



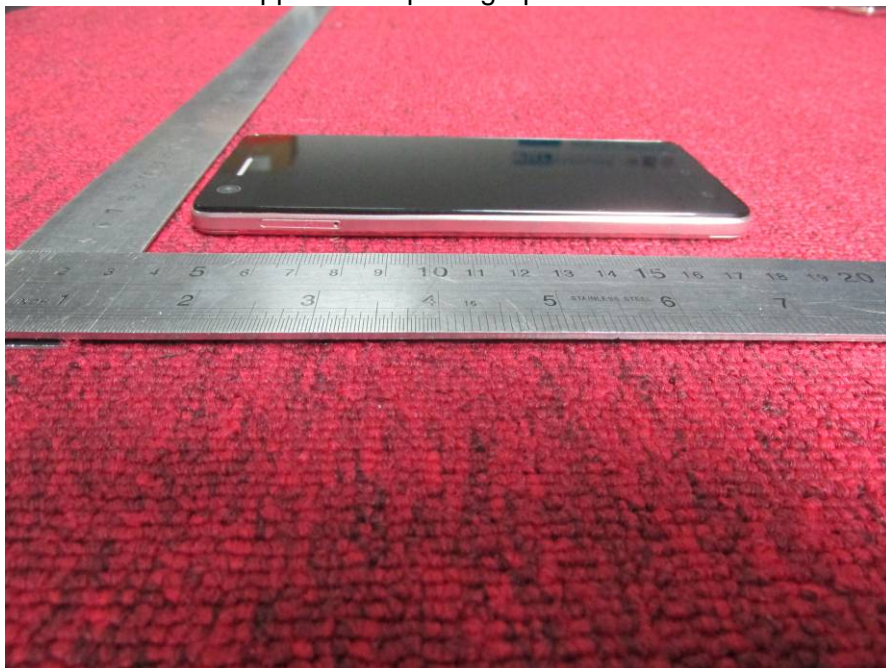
Appearance photograph of EUT



Appearance photograph of EUT



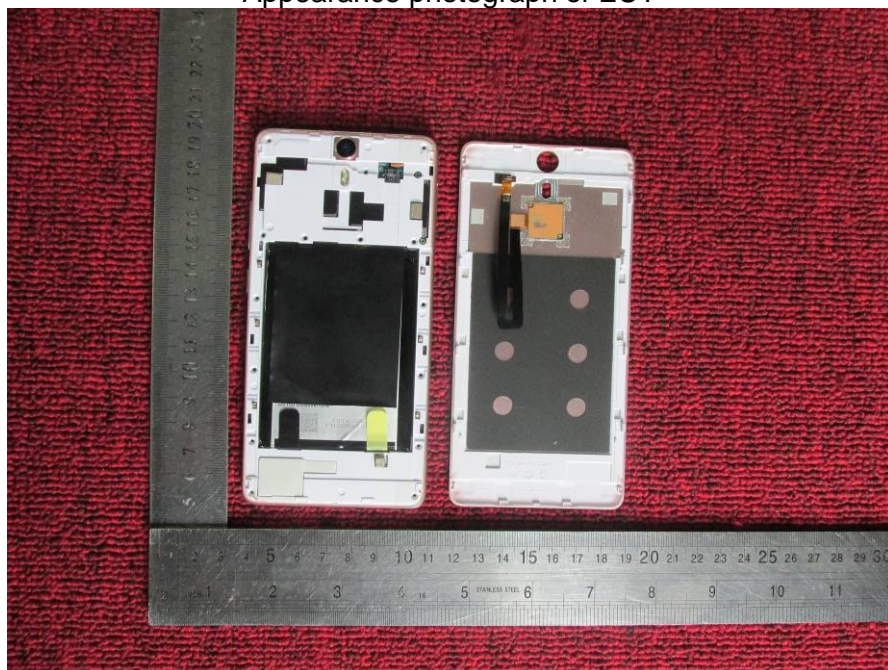
Appearance photograph of EUT



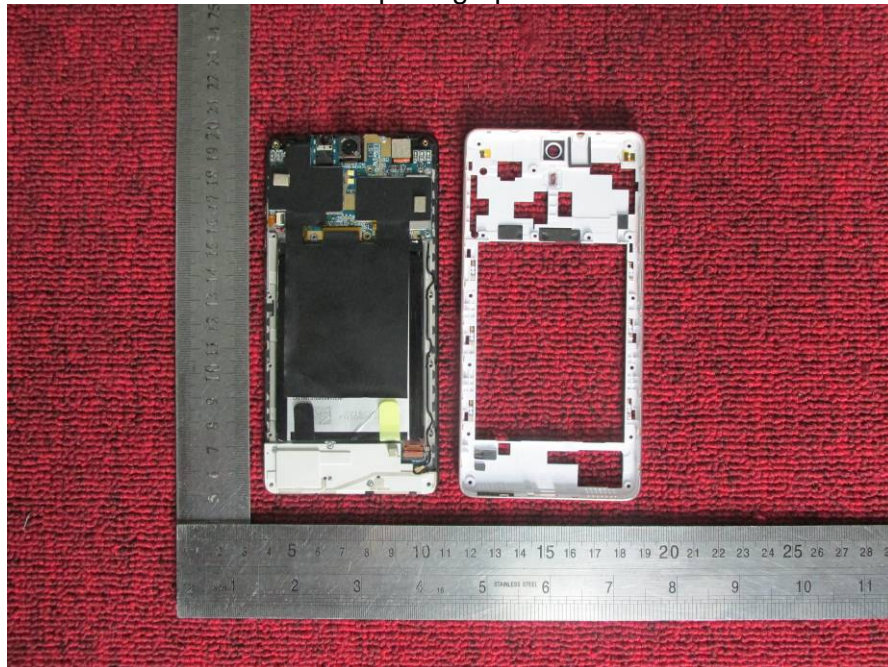
Appearance photograph of EUT



Appearance photograph of EUT



Internal photograph of EUT



Internal photograph of EUT



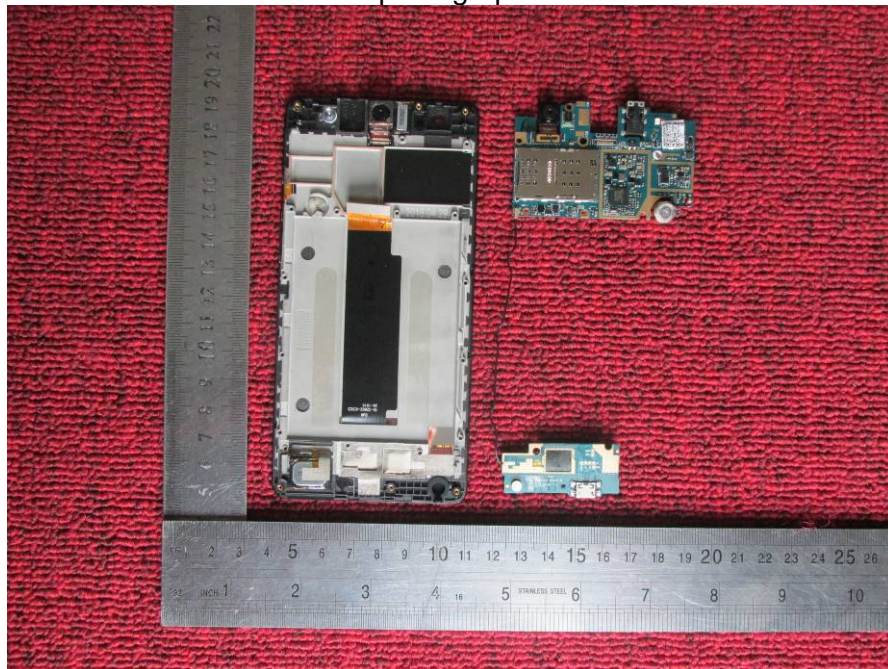
Internal photograph of EUT



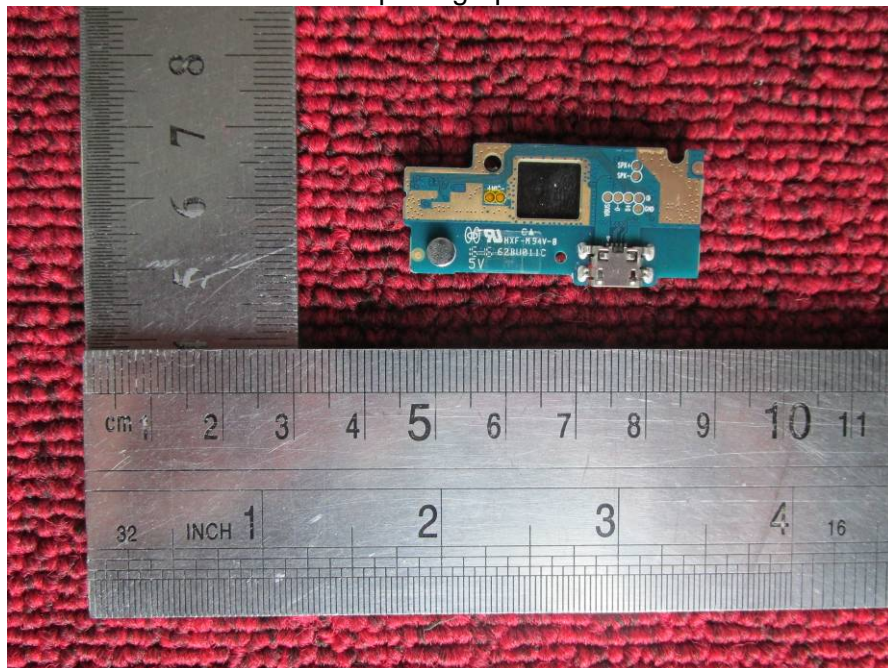
Internal photograph of EUT



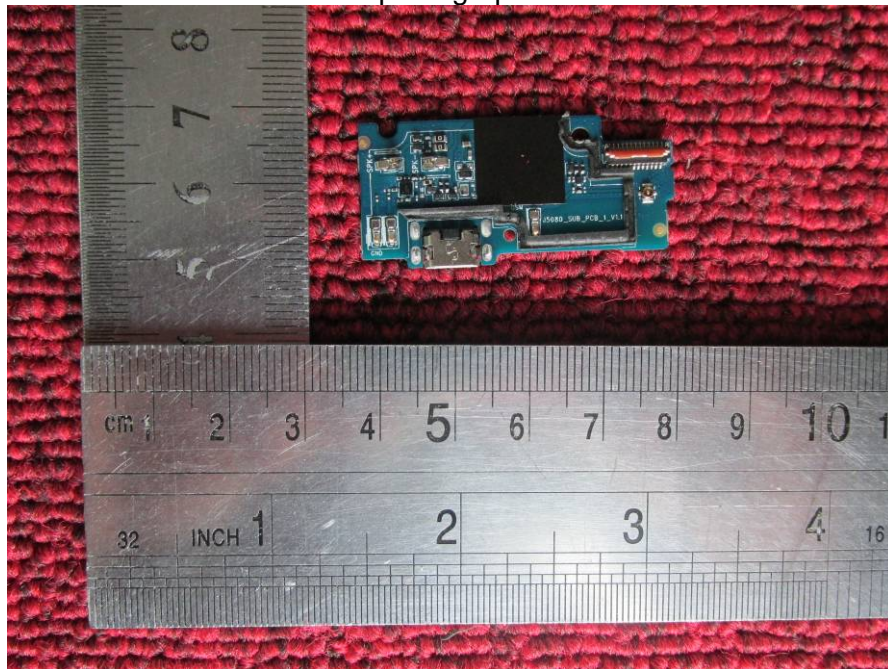
Internal photograph of EUT



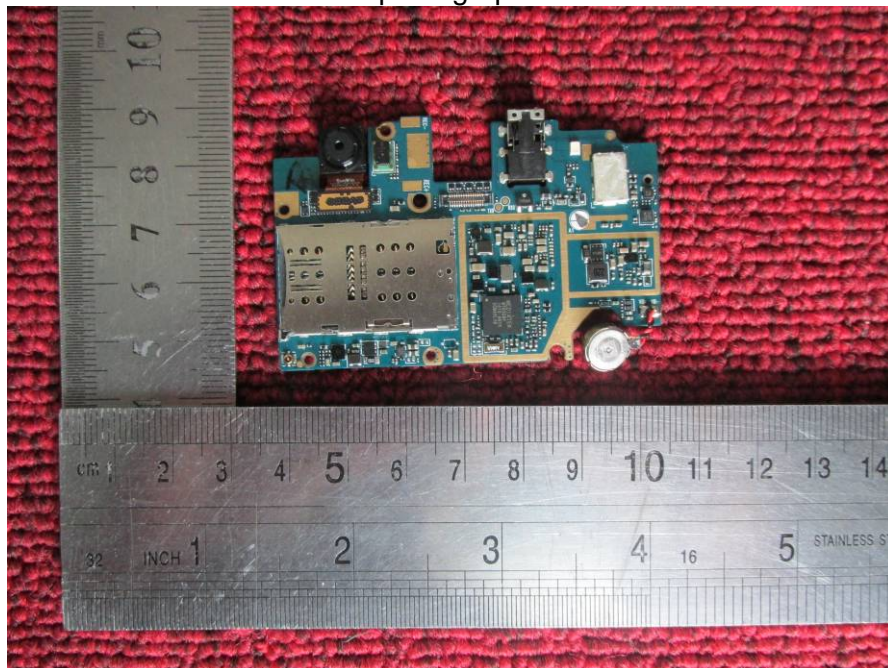
Internal photograph of EUT



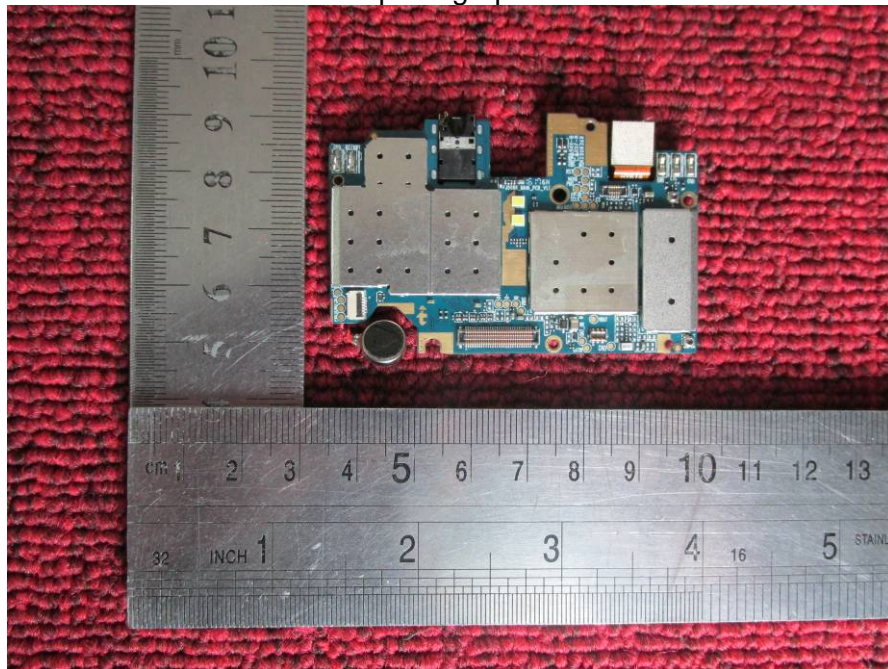
Internal photograph of EUT



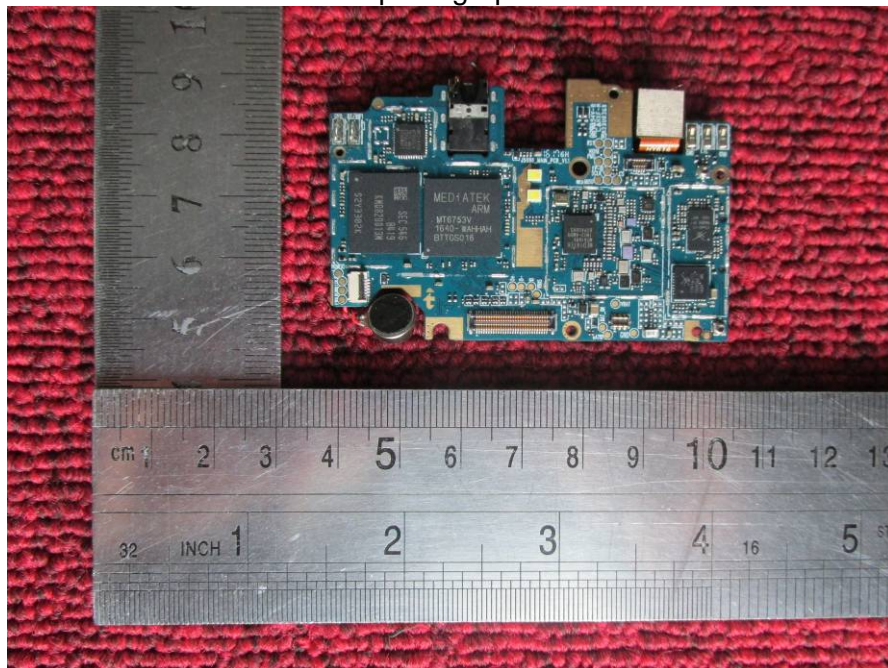
Internal photograph of EUT



Internal photograph of EUT



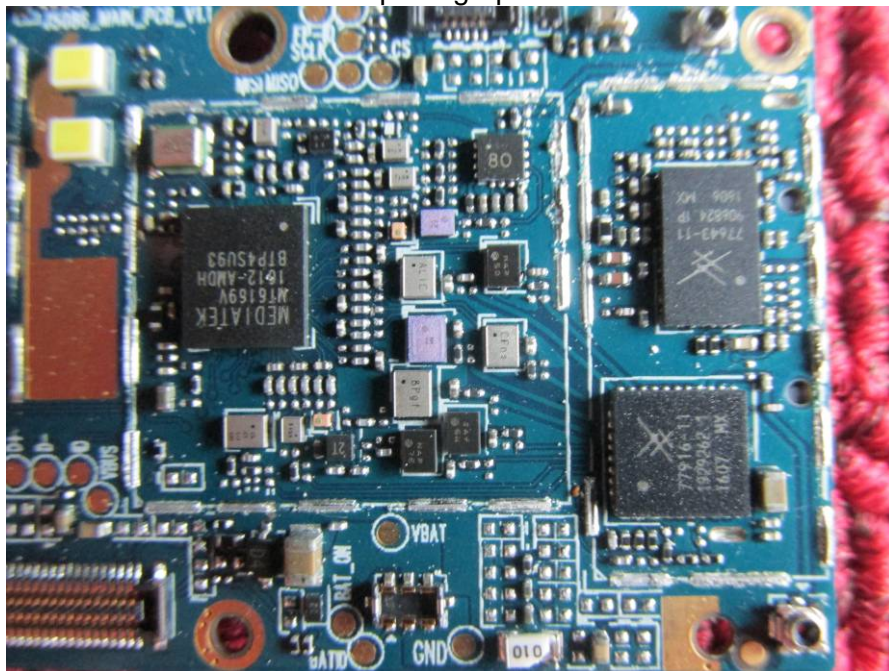
Internal photograph of EUT



Internal photograph of EUT



Internal photograph of EUT



---END OF REPORT---