

# 1 Overview

## 1A Statement

Sincerely thanks for purchasing our products, please contact us if any problem or requirement.

This manual is for Wireless LCD network video recorder combo.

This user manual may contain incorrect place in technology, place not matching with product function or operation, or printing mistake. We will update our user manual according to our updating in product, and will periodically Improve or updating the product and programming. The updating content will add in the new user manual, we won't inform.

If the product's description in user manual is inconsistent with the real products, please be based on the real products.

## 1B Safety cautions

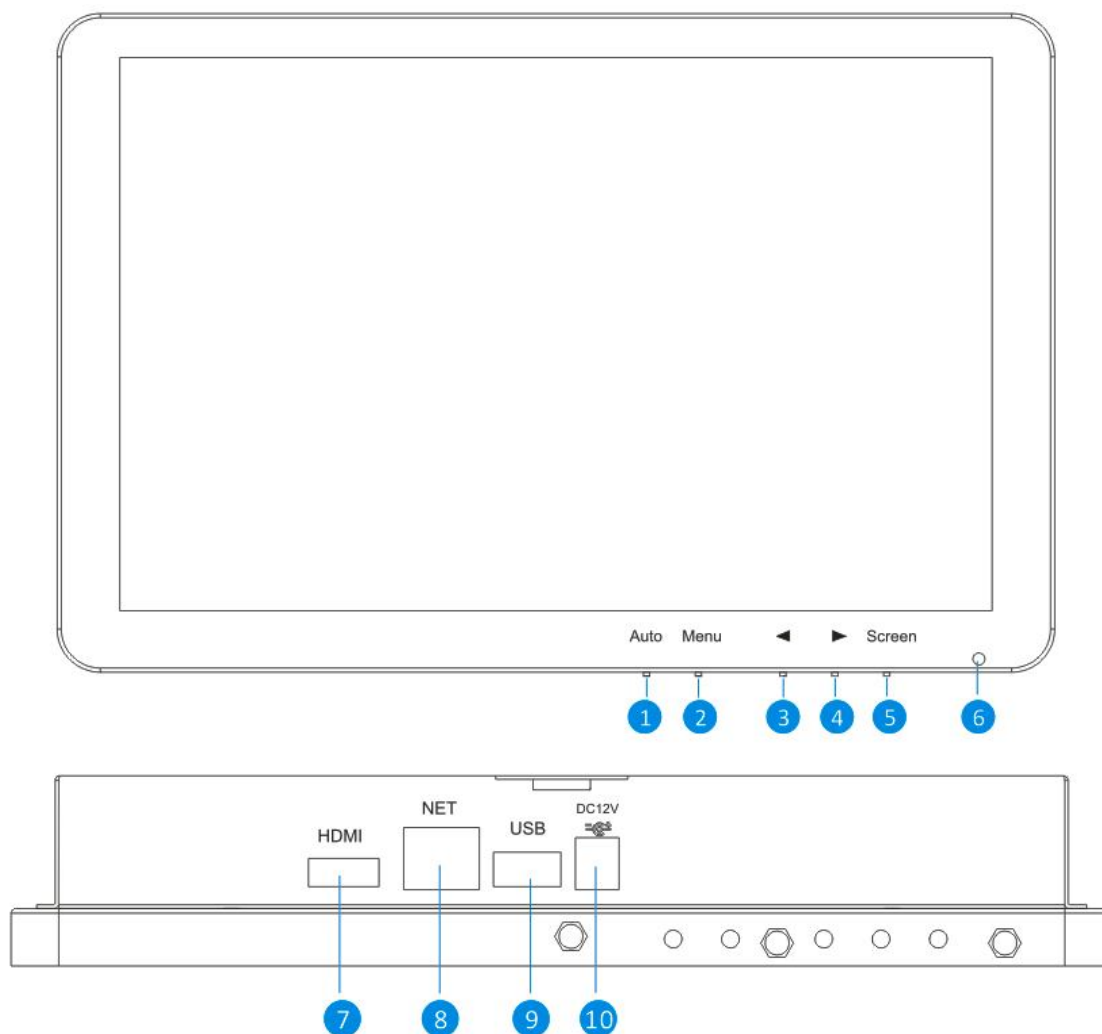
- Make sure product is fixed correctly and stable if fastened in place.
- Do not operate if wires and terminals are exposed.
- Please don't put a container with liquid near NVR (like vase).
- NVR should put at a ventilation place, and prevent clogged the ventilation hole.
- Check the power voltage, in case if damage by wrong voltage.

# 2 Package contents

When you unpack the DVR, you should find the following items in the box. If anything is missing please notify your place of purchase.

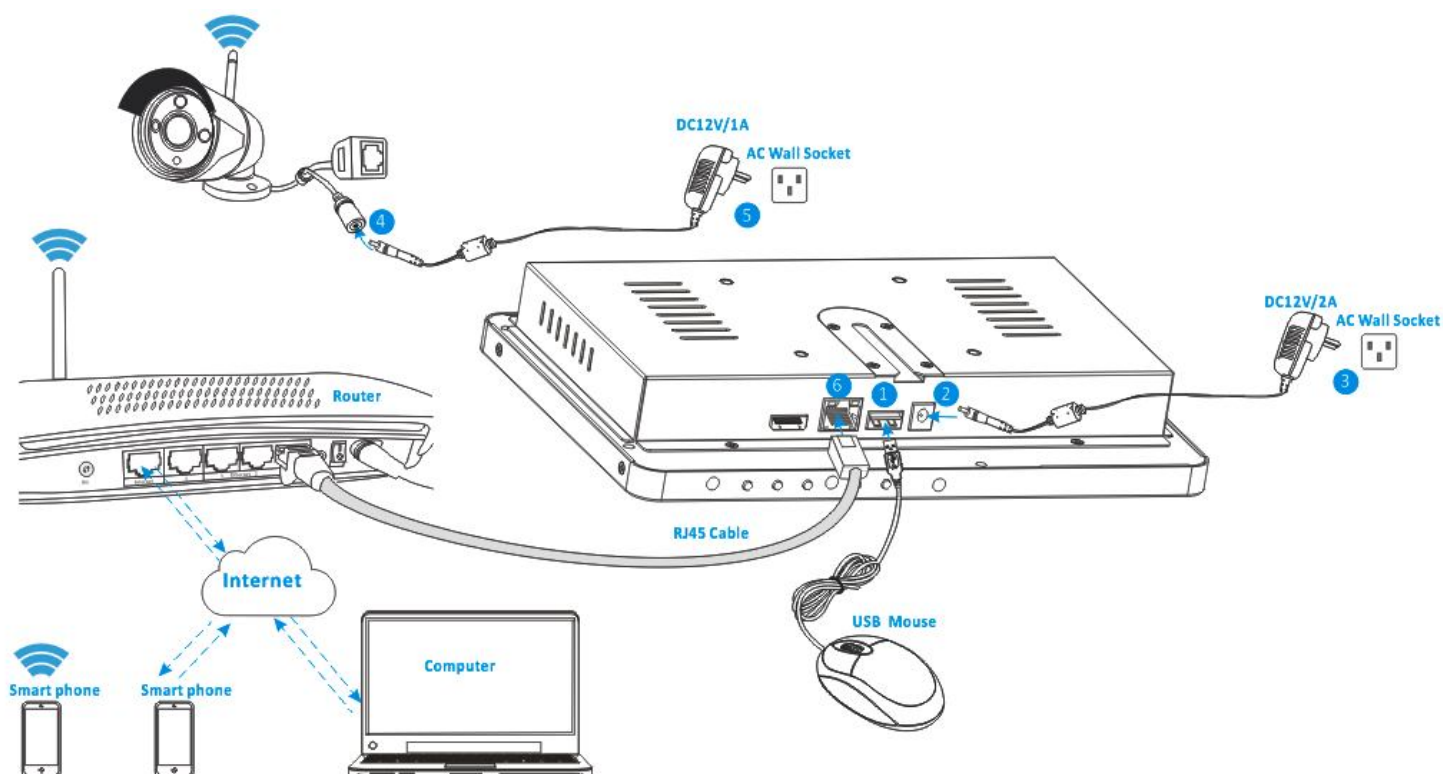
No.	Item	Quantity
1	Wireless LCD NVR Combo	1pcs
2	Mounting bracket for NVR	1pcs
3	Wireless IP Camera	2 or4pcs
4	Antenna for NVR	2pcs
5	AC/DC adapter for NVR(12V/2A)	1pcs
6	AC/DC adapter for IP Camera(12V/1A)	2 or4pcs
7	USB MOUSE	1pcs
8	Hard Disk Mounting Screws	4pcs
9	IP Camera Mounting Packet	2 or4pcs
10	Quick Start Guide	1pcs
11	Support CD	1pcs

### 3 Appearance



Inde	Name	Function
1	AUTO key	Adjusts the screen display automatically.
2	MENU key	Activates and exits the On Screen Display.(Monitor)
3	← key	Moves the OSD menu or decreases the selected item value.
4	→ key	Moves the OSD menu or increases the selected item value.
5	Screen key	Turn on/turn off the display screen.(Monitor)
6	LED Indicator	The power LED lights with green when the display screen is turned on. The power LED lights with red when the display screen is turned off.
7	HDMI connector	HDMI output signal can be connected to another HD monitor for display.
8	Net	For a wired connection, connect this to a spare port on your home router.
9	USB Ports	USB 2.0 Ports for mouse & external device(U-disk)
10	Power socket	Connect the power adapter here.(DC12V/2A)

## 4 System diagram

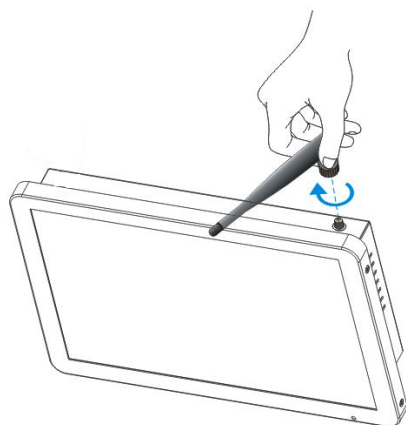


- ① Plug in the included USB mouse to this connector.
- ② Connect the output of the supplied 12V power adapter into the power socket on the NVR.
- ③ Plug the power adapter into the wall socket.
- ④ Connect the output of the supplied 12V power adapter into the power socket on the Camera.
- ⑤ Plug the power adapter into the wall socket.

**Wait for a few minutes till the NVR and the IP cameras finished startup. So far, the local surveillance system was done.**

- ⑥ If you want to remote access this system with a smart phone or computer, you should connect the NVR to your home wireless router with a RJ45 network cable and make sure the router has been linked to internet.

## 5 Antenna installation



Use a clockwise motion to connect the antenna. Make sure the antenna is connected firmly but not excessively. You can adjust antenna horizontal or vertical direction to get best reception.

## 6 Hard disk installation

**Note: Select HDD recommended by manufactures and suitable for devices.**

**HDD need be formatted manually for normal recording.**

Install Steps:

1. Remove the screws of the device back cover.



2. Combine the HDD bracket and HDD with screws.



3. Connect the HDD cable and power line.



4. Fix HDD to the device mid-plate with screws.



5. Close the back cover and fix it.



## 7 Installing the mobile App

The wireless LCD NVR can work with iPhone, iPad and Android devices.

Install the mobile App and use your mobile for remote viewing/control your NVR.

The mobile App is free to download for you, and is available from the respective Apple App Store and Google Play Store.

### 7A To install App on Android

- ① Open Google Play Store.
- ② Search for "ISmView".
- ③ Tap **INSTALL**.
- ④ Review the App's permissions, then tap **ACCEPT** to download.

### 7B To install App on iPhone/iPad

- ① Open the App Store.
- ② Search for "ISmView".
- ③ Tap **INSTALL APP** to download.

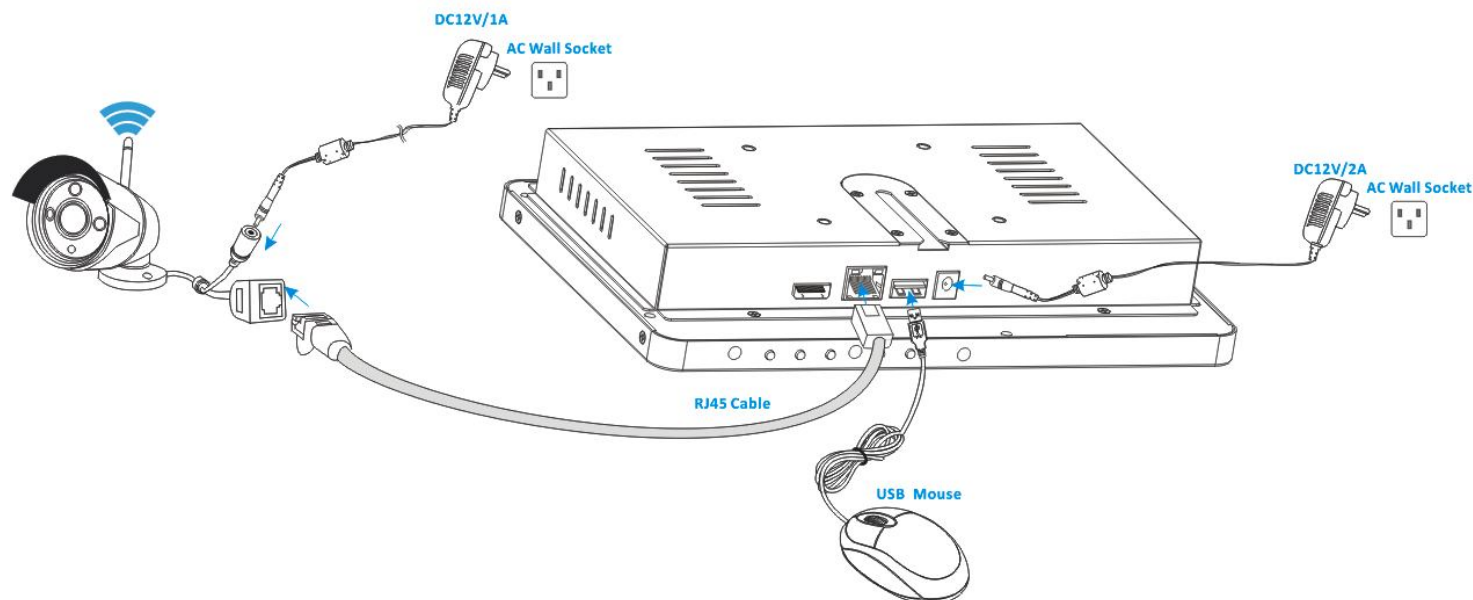
After installing ISmView App on your mobile device, just locate the ISmView App and tap the icon to run. The App will load and take you directly to Login screen.

## 8 Software operation

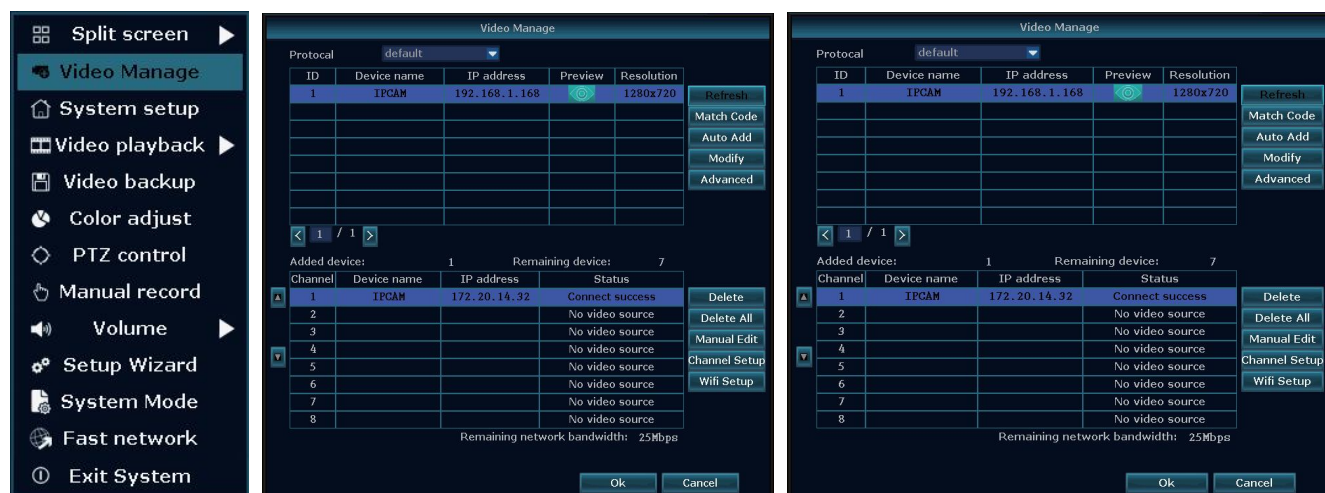
### 8A Add camera to NVR

The included cameras in the kits have been paired with NVR at the factory, no need execute this operation.

If you want to add more cameras to NVR, please operate follow below steps:



- ① Connect a new IP camera to the NVR with a network cable, then power supply for both the IP camera and the NVR, wait for about over 1 minute.
- ② Click the mouse right button on the main interface -> Click "Video Manage" -> "refresh" -> select the camera in the search list -> "Match code" -> "OK".
- ③ After about 30 seconds the new camera will be occurred in the "added device" list, and status displays "Connect success".








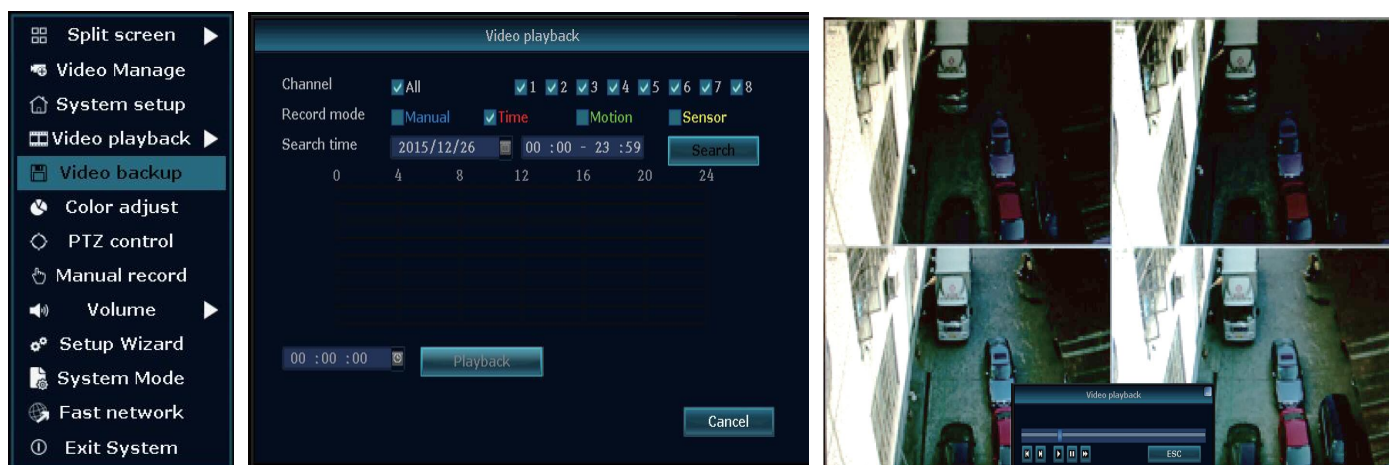
### 8B Video playback

**Step:** Click the mouse right button on the main interface -> Video playback -> choose channel NO. -> choose record mode



->in Search time, input the beginning time and end time ->click search, recording will come out ,drag time bar ->click playback to start

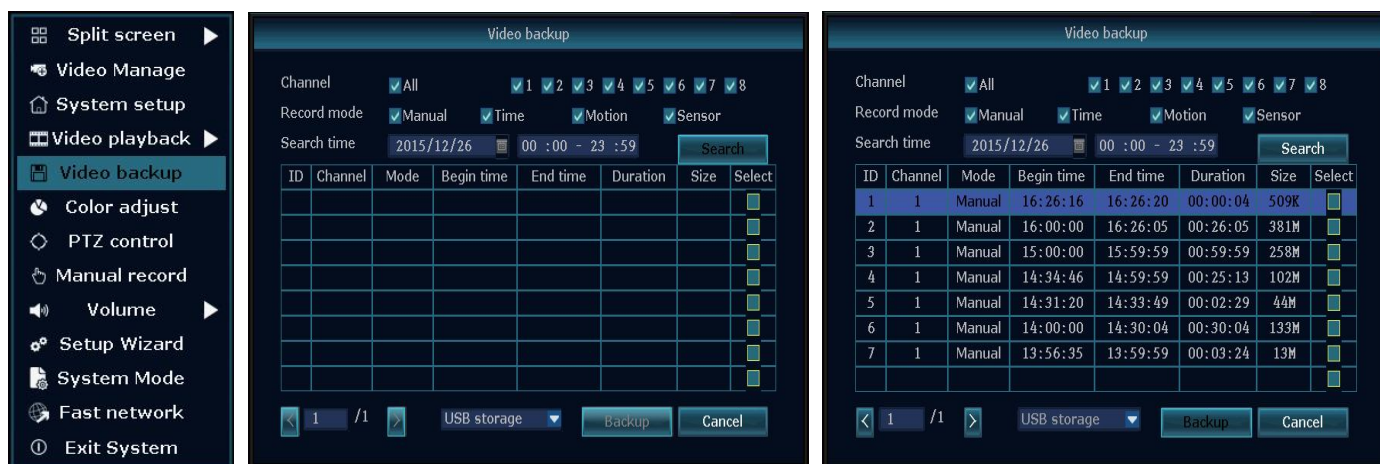
**Tips:** Playback icon introduction:  playback 1 frame previous  playback 1 frame next  play  pause  fast forward x2,x4,x8



## 8C Video backup

**Step:** Click the mouse right button on the main interface->Video backup ->choose channel No. ->choose record mode ->in Search time ,input the beginning time and end time ->click search, recording will come out ->choose the video which need to backup ->click video backup.

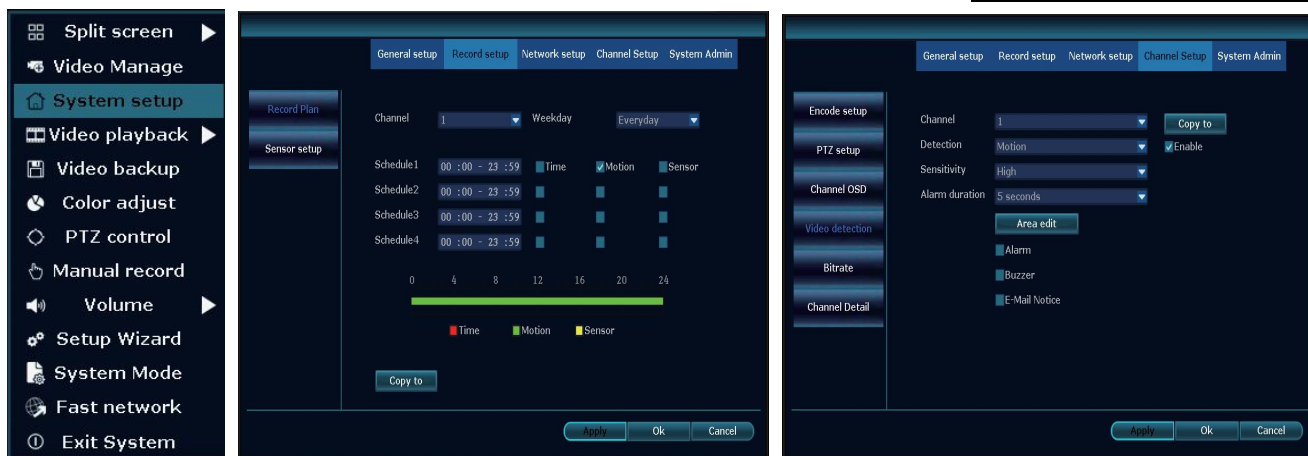
**Tips:** Support 32GB U disk backup max, recording video file will be packed every one hour.



## 8D Video detection

**Step 1:** Click the mouse right button on the main interface->System setup ->Record setup->choose motion->choose all ->click Copy to ->click OK to save setting.

**Step 2:** Choose Video detection ->set sensitivity as required- > choose motion->set Alarm/Buzzer or Email as required->click Copy to->click OK to save setting .



## 8E Generate P2P ID

**Note:** The precondition to generate P2P ID is that make sure the NVR is connected with internet, and IP address is available.

**Step :** Click the mouse right button on the main interface->System setup->Network setup.

If user is familiar with LAN, then no need to choose DHCP which help to get IP address automatically .Manually input IP address and DNS address, NVR will generate ID by network, once generate, it will appear in menu.



If user not familiar with LAN,or NVR is in independent network,can choose DHCP to get availableIP address.

After NVR gets IP address ,it will generate P2P ID automatically.



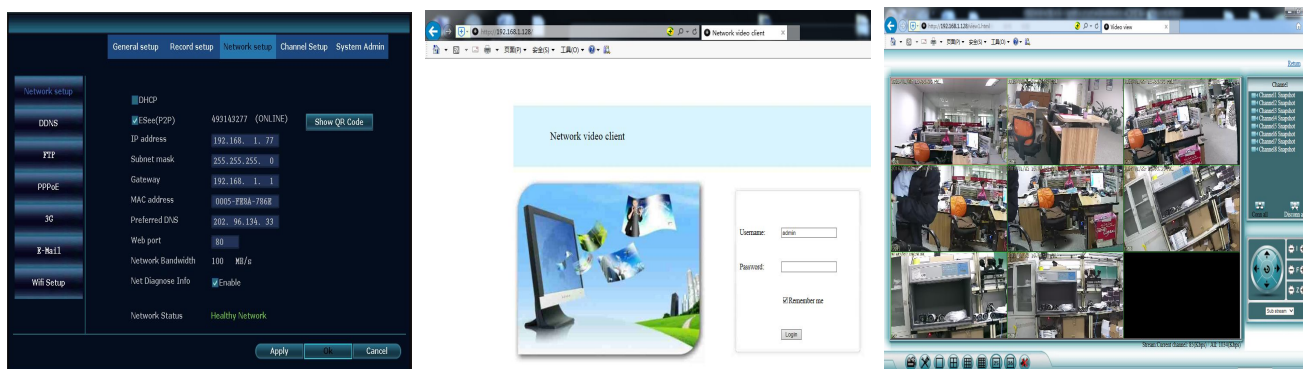
## 8F Access in LAN

**Step 1:** Click the mouse right button on the main interface-> System setup ->Network setup ->check videorecorder IP address.

**Step 2:**Access by computer in the same LAN ,input NVR's IP address and prot( If prot is 80, no need to input)in IE prowsrer or any other browser.Then it will access LAN log in webpage,input user name and password,click login.

**Step 3:**Once access successfully,can get video.

**Tips:** Please make sure the NVR and computer be working in the same network segement.



## 8G Access in WAN

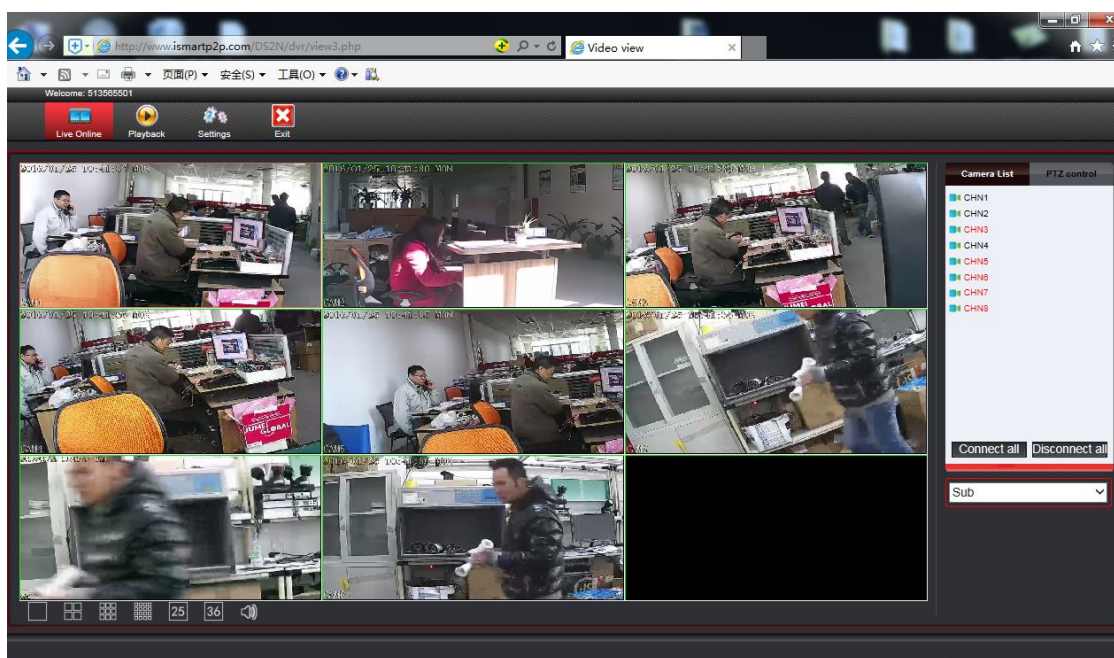
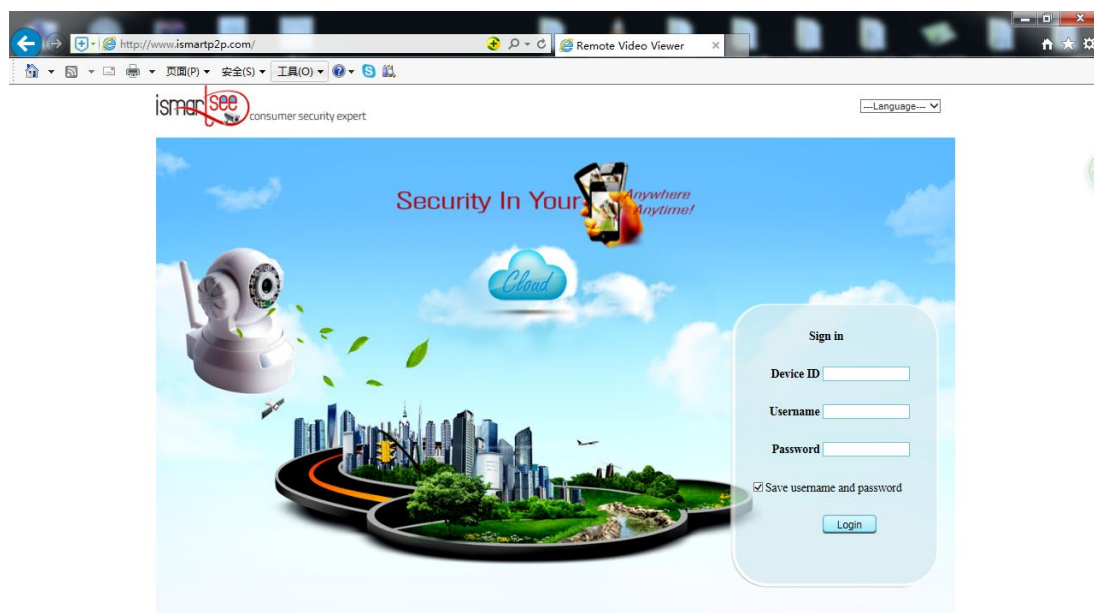
**Step 1:** Click the mouse right button on the main interface-> System setup->Network setup ->check video recorder IP address.

**Step 2:** Access by computer in WAN, input [www.ismartp2p.com](http://www.ismartp2p.com) in IE browser or any other browser. Then it will access log in webpage, input ID, user name and password, click login.

**Step 3:** Once access successfully, can get video.







## 8H Mobile application (iSmView)

### ■ Add device

**Step 1:** Log in iSmView application

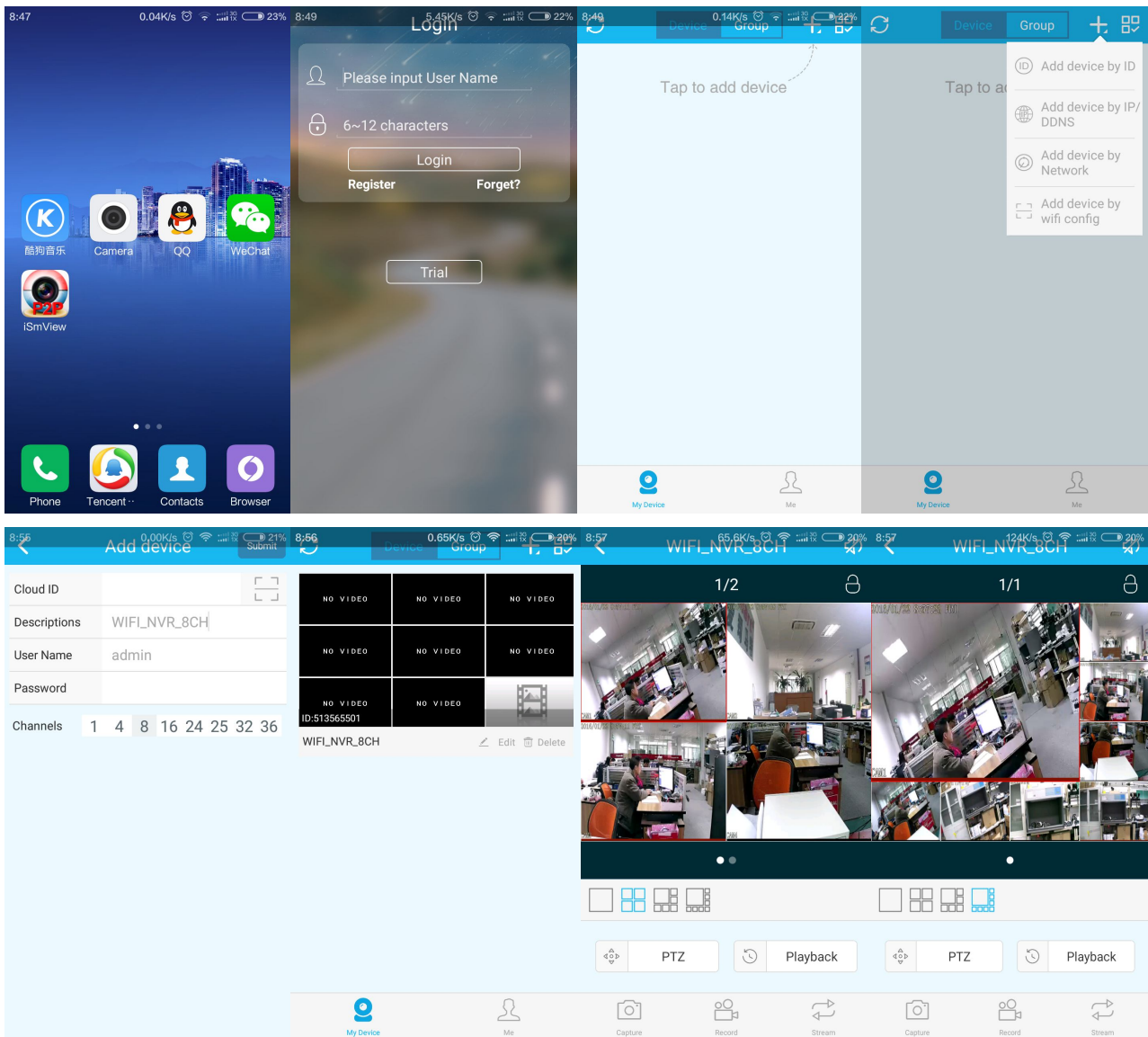
**Step 2:** Click “+” icon. Add device by ID

**Step 2:** Enter device edit page. You can edit device name. Pay attention to correct selection of channel number

**Step 3:** Input video recorder log in information

**Step 4:** Added successfully .it will show below page

**Step 5:** Click channel No. to get video. The default 4 Video



## Function

**Step 1:** It will connect channel 4 video by default, click “+” to add more channel

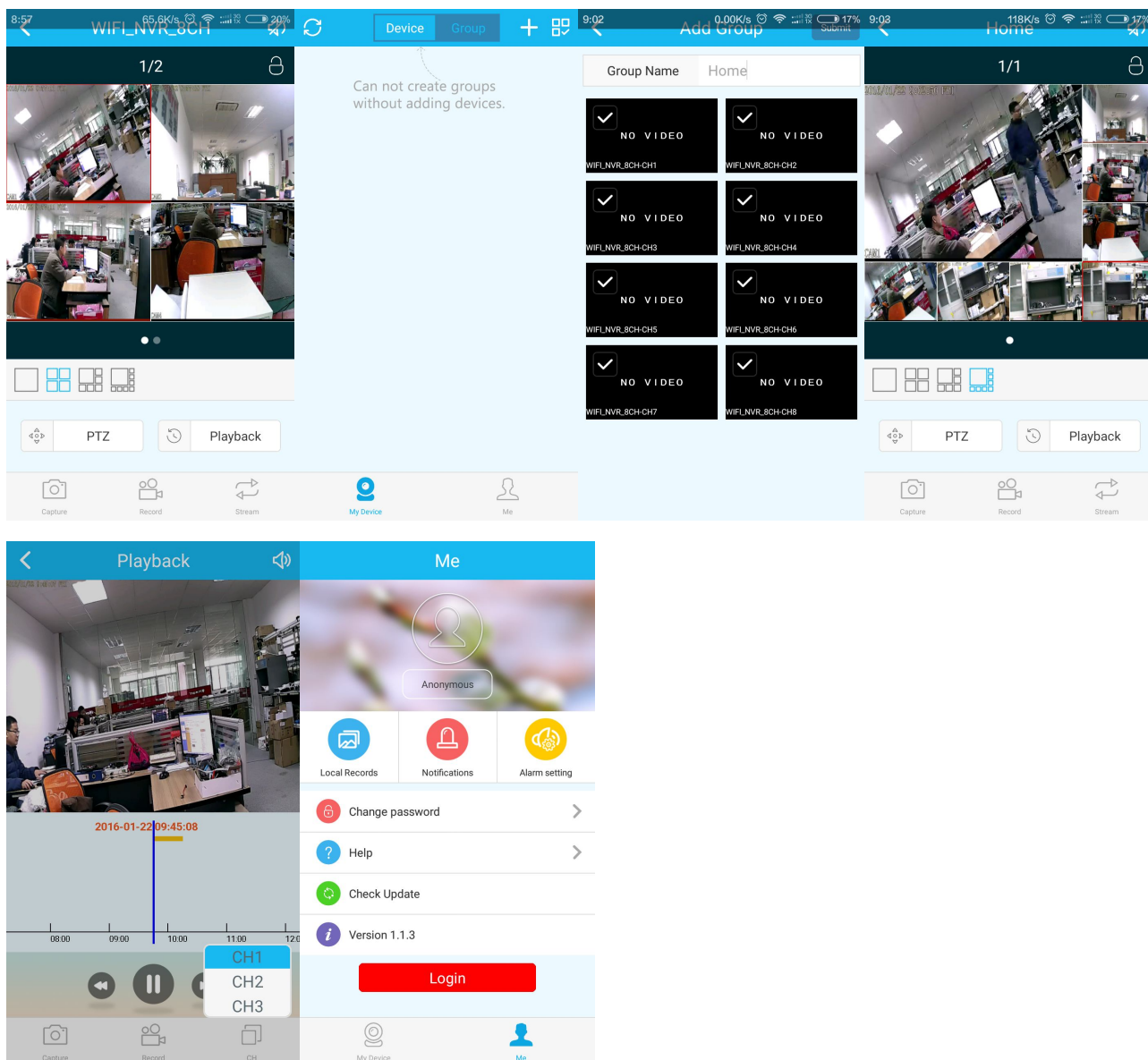
**Step 2:** Click this icon to edit video record log in information

**Step 3:** Add device group

**Step 4:** Capture/Record/Stream

**Step 5:** Video Playback. The right choice you want to see the video channel

**Step 6:** File management and more settings



## Troubleshooting

### Q1: How to register a new account?

A1: Were registered with account button on the "login" screen, click to enter the "registration" interface, registered accounts need to fill in a valid email, at the same time easy to see the cloud will send an email to the email to activate. The user can choose not to activate the account, this will not affect the use of the easy media cloud, but not activated account cannot perform the function of forget password.

### Q2: What is the difference between login mode and Trial mode?

A1: Login mode, the device or group of users to add data managed by the server, or even delete all the data in the mobile phone in the mobile phone, data is not lost. As long as reinstall the application and log in to the old account, you can restore all the data. And Trial mode, users to add equipment and grouped data is stored locally, once the data is missing, unable to restore. In addition, the login mode, we provide users with equipment state warning, alarm, news feeds, and other auxiliary functions.

## 9 Specifications

Wireless NVR Specification		
Display device	Screen	10.1inch LED LCD,1280*800
	Viewing angle	Horizontal: 170deg. Vertical : 170deg.
AV(audio/video)input	Network Video	4CH IP cameras
AV(audio/video) output	HDMI output	1ch, resolution: 1024x768, 1366x768, 1440x900,1920x1080p
AV CODEC	Video Resolution	D1/720P
	synch-playback	4CH
Video Control	Video/Capture mode	Manual、Time、Motion
	Playback mode	Real time、Routine、Event
	Backup	USB backup
Hard Disk	Type	1*SATA interface
	Max Capacity	Up to 4 TB each HDD(2.5")
External Interface	Network Interface	1 adaptable RJ45 10M/100M, 2 WIFI interface
	USB Interface	2 USB 2.0
Network	Protocol	UPnP (plug & play)/SMTP (email service)/PPPoE (dial-up)/DHCP etc.
Others	Power Supply	DC12V2A
	Power Consumption (W)	≤15W (Without HDD)
	Operate Temperature (°C)	-10℃~+55℃
	Working Humidity (%) RH	10%~90%
	Size	250x36x166mm(W × D × H) without bracket
	Weight (excluding HDD)	1kg(with bracket)
IPC Specification		
Image	Sensor	1/4" Progressive Scan Sensor
	Signal System	PAL/NTSC
	Resolution	1280 x 720 ,16 : 9 High Definition
	Minimum illumination	Color: 0.1 Lux; B/W: 0.01 Lux
	Lens	f=4mm
	Day&Night	Auto / Color / BW
	3D-DNR	Auto
Network	Protocol	RJ45 / WIFI 802.11b/g/n
General Specification	Working Temperature/Humidity	-10℃ to +50℃ / 30% to 80% RH
	Power Input	DC12V-1A
	Power consumption	≤6W
	Size	205(L)×70(W)×55 (H)mm
	Weight	500g
	Level of Protection	IP66

## **FCC STATEMENT :**

This device complies with Part 15 of the FCC Rules. Operation is subject to the following two conditions:

- (1) This device may not cause harmful interference, and
- (2) This device must accept any interference received, including interference that may cause undesired operation.

**Warning:** Changes or modifications not expressly approved by the party responsible for compliance could void the user's authority to operate the equipment.

NOTE: This equipment has been tested and found to comply with the limits for a Class B digital device, pursuant to Part 15 of the FCC Rules. These limits are designed to provide reasonable protection against harmful interference in a residential installation.

This equipment generates uses and can radiate radio frequency energy and, if not installed and used in accordance with the instructions, may cause harmful interference to radio communications. However, there is no guarantee that interference will not occur in a particular installation. If this equipment does cause harmful interference to radio or television reception, which can be determined by turning the equipment off and on, the user is encouraged to try to correct the interference by one or more of the following measures:

- Reorient or relocate the receiving antenna.

- Increase the separation between the equipment and receiver.

- Connect the equipment into an outlet on a circuit different from that to which the receiver is connected.

- Consult the dealer or an experienced radio/TV technician for help.

## **FCC Radiation Exposure Statement**

This equipment complies with FCC radiation exposure limits set forth for an uncontrolled environment. This equipment should be installed and operated with minimum distance 20cm between the radiator & your body