

# **USER MANUAL**

# **PROFESSIONAL SPEAKER**

Model No.:Y-01

FCC ID: 2AIXMY-01



**PLEASE READ THIS USER MANUAL  
CAREFULLY BEFORE OPERATING THIS UNIT**

## IMPORTANT SAFETY MEASURES

Before using this machine, please read all the safety and operating instructions, meanwhile, please observe all the indications about safe operating. These safety and operating instructions should be kept in condition of consultation.



- 1、Protection of electric power supply line: Be aware that the electric power supply line is not tramped, pressed by heavy objects. Pay special attention to the plug of power supply line and outlet on the machine. DO NOT lengthen the electric shock, DO NOT pull or drag or the power supply line.
- 2、Ventilation: This set must be put in ventilated place. DO NOT put disk on it or cloth to cover it. The distance away from the wall should not be less than 10 centimeters. DO NOT put this set on the bed, sofa, carpet or other objects with similar surface in case of good ventilation.
- 3、Casing Dismantling: DO NOT dismantle the casing. If one touches the inner components, he will probably get serious electric shock.
- 4、Unusual smell: When you discover unusual smell and smoke, cut power supplies immediately and pulls out the plug from the outlet on the wall. Contact the sell shop or nearest repairing center.  
Attention: This set applies to AC 100V~240V/50Hz~60Hz power supply. Use standard power supply. Pls be sure for the correct power supply before use it.

## 1-1 PRODUCT FEATURES

- 1.High output power
- 2.With karaoke function
- 3.The treble is clear, mid and bass is powerful.
- 4.Compatible to multimedia
- 5.FM radio
- 6.Wireless system

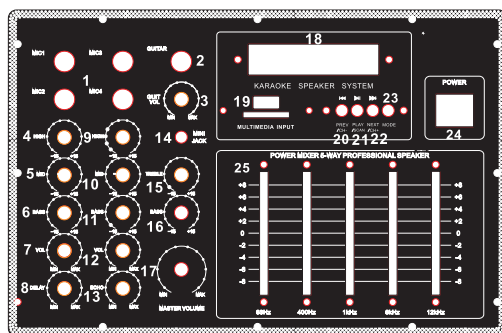
## 2-1 USE INSTRUCTION

- 1.Please check the product equipment list is correct
- 2.Connect the signal cables according to the back panel introduction
- 3.To sure the correct voltage, insert electronic source cable, turn on the power switch button
4. Adjust the function knobs/buttons to your satisfied best sound effect

## 3-1 PRODUCT EQUIPMENT LIST

- 1.Speaker-----1 pcs
- 2.Multimedia remote control-----3pcs
- 3.User manual-----1 pcs
4. Cable-----2 pcs

## 4-1 FRONT PANEL FUNCTION INSTRUCTION



1. Mic. 1/2/3/4 inputs
2. Guitar input
3. Guitar volume adjustment
4. Mic. 1/Mic. 2 treble adjustment
5. Mic. 1/Mic. 2 mid adjustment
6. Mic. 1/Mic. 2 bass adjustment
7. Mic. 1/Mic. 2 Volume adjustment
8. Mic. 1/2/3/4 delay function
9. Mic. 3/Mic. 4 treble adjustment
10. Mic. 3/Mic. 4 mid adjustment
11. Mic. 3/Mic. 4 bass adjustment
12. Mic. 3/Mic. 4 Volume adjustment
13. Mic. 1/2/3/4 echo function
14. Mini jack input
15. Multimedia treble adjustment
16. Multimedia bass adjustment
17. Multimedia master volume adjustment
18. Led display
19. Multimedia input
20. Multimedia Prev/FM CH- button
21. Multimedia play/pause/FM scan
22. Multimedia next/FM CH+ button
23. Multimedia input/FM radio/Wireless switch button
24. Power switch
25. Multimedia EQ button

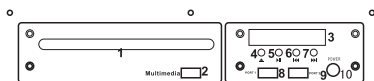
## Remote control



- Multimedia standby
- Multimedia input/FM radio/Wireless switch button
- Multimedia prev/FM CH- button
- Multimedia play/pause button/FM tuner
- Multimedia next/FM CH+ button
- Multimedia EQ button
- Multimedia repeat button
- Multimedia volume up button
- Multimedia volume down button
- Mute button
- FM radio scan
- Multimedia number button

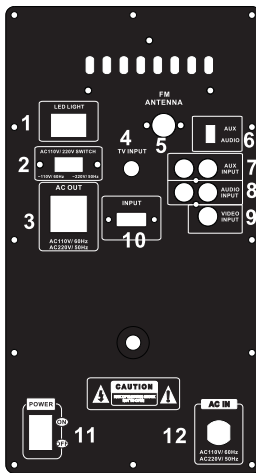


1. Power
2. OSD: On screen display
3. 1-10, 10+: the number choosing key
4. GOTO: time setup
5. Memory
6. Clear
7. Repeat
8. Repart the program A-B
9. Foward
10. Rewind
11. Return
12. Slow
13. Setup
14. The up direction
15. The left direction
16. Zoom
17. Sub/copy
18. R/L
19. Play/pause
20. Stop
21. Open/close
22. N/P
23. Launage
24. Balance
25. Perform/VGA
26. PBC: the down direction
27. Next
28. Previous
29. STEP
30. Programm
31. Menu
32. The right direction
33. Enter
34. Title
35. The down direction
36. Angle
37. Multimedia choose the mode
38. Vol+
39. Vol-



1. The disc slot
2. Multimedia input
3. LED Display
4. Open/close button
5. Play/Pause button
6. Previous button
7. Next button
8. Port 1
9. Port 2
10. Power button

## 5-1 BACK PANEL CONNECTION DIAGRAM



- 1.Led light power
- 2.AC110V/220V Power switch
- 3.AC out
- 4.TV input
- 5.FM Antenna
- 6.Aux/Audio option
- 7.Aux input
- 8.Audio input
- 9.Video Input
- 10.Input
- 11.Power switch
- 12.AC input

## 7-1 PRECAUTION

In order to prevent operating problems or serious damage to the device, please comply with the following remarks:

- 1.Hold the electric outlet while pulling out the plug. Do not pull the wire.
- 2.Operating audio appliances should be kept away from heating facilities.
- 3.Do not attempt to fix or revise the circuit.
- 4.Do not touch the internal parts, otherwise electric shock or serious damage to the device might cause.
- 5.Pull out the plug if not in use for long.
- 6.Ensure the audio product in a ventilated dry condition with about 20mm Space around as for heating dispersion.

Warning: Do not expose this appliance to rain or moisture, and vessel containing liquids, such as a cup, vase, is not supposed to be placed on or above the appliance.

## 8-1 TROUBLESHOOTING

Symptom	Possible Problem	Solution
No Function Light & No Sound	1.Plug is not well connected	Insert the plug into electric outlet
	2.Speaker power button is not turned on	Turn on the button
Function Light on but No Sound	1.Cable misconnected	Turn off the power, check the input jack to ensure proper audio signal is connected to relevant input jack
	2.Audio signal is not transmitted to Speaker	Check all the speakers if there is audio signal output
If the problem exists after checking related procedures above, please refer to the appointed service agent or professional technician to fix it. Do not attempt to open the cover, otherwise we assumes no responsibility.		

\* Design and specifications of products are subject to change without notice.  
please noted!

## **FCC Statement:**

This device complies with Part 15 of the FCC Rules. Operation is subject to the following two conditions:

- (1) This device may not cause harmful interference, and
- (2) This device must accept any interference received, including interference that may cause undesired operation.

**Warning:** Changes or modifications not expressly approved by the party responsible for compliance could void the user's authority to operate the equipment.

NOTE: This equipment has been tested and found to comply with the limits for a Class B digital device, pursuant to Part 15 of the FCC Rules. These limits are designed to provide reasonable protection against harmful interference in a residential installation.

This equipment generates uses and can radiate radio frequency energy and, if not installed and used in accordance with the instructions, may cause harmful interference to radio communications. However, there is no guarantee that interference will not occur in a particular installation. If this equipment does cause harmful interference to radio or television reception, which can be determined by turning the equipment off and on, the user is encouraged to try to correct the interference by one or more of the following measures:

- Reorient or relocate the receiving antenna.
- Increase the separation between the equipment and receiver.
- Connect the equipment into an outlet on a circuit different from that to which the receiver is connected.
- Consult the dealer or an experienced radio/TV technician for help.

## **FCC Radiation Exposure Statement**

The device has been evaluated to meet general RF exposure requirement.

The device can be used in portable exposure condition without restriction.