

SG1000 HUB User Manual



Document Number: **EL_SG1000_001**

enblink

This document contains information of ENBLINK's product.

Specifications and information herein are subject to change without notice.

Use of this specification for product design requires an executed license agreement from ENBLINK.

ENBLINK shall not be liable for technical or editorial errors or omissions contained herein; nor for incidental or consequential damages resulting from the furnishing, performance, or use of this material. All parts of ENBLINK Tech sheet are protected by copyright law, and all rights are reserved.

This documentation may not, in whole or in part, be copied, photocopied, reproduced, translated, or reduced to any electronic medium or machine readable form without prior consent, in writing, from ENBLINK.

ENBLINK Co., Ltd.

6F DASAN Tower, 49, Daewangpangyo-ro644Beon-gil, Bundang-gu, Seongnam-si,
Gyeonggi-do, 463-400 KOREA

Tel. 82-70-7012-0830

<http://www.ENBLINK.com>

Table of Contents

1. Safety Information	4
2. Product Introduction.....	5
2.1. Specification	5
2.2. Components.....	6
2.3. Term of part.....	6
3. SG1000 Registrations.....	8
3.1. Hub Registration.....	8
3.2. Device Registration	9
4. Basic Information.....	11
4.1. Dashboard	11
4.2. Sub-menu	12
5. How to control.....	13
5.1. Paring device (Inclusion)	13
5.2. Portable Inclusion	14
5.3. Compatible devices.....	15
5.4. Control devices	15
6. Product Information.....	17
6.1. Product information note.....	17
6.2. Customer Support.....	17
6.3. Warranty	17

1. Safety Information



Do not give the dongle any shock or impact.

Drop or shock of the dongle may change the shape and it may lead malfunction
Please use at stable place without fall risk.



Do not disassemble your dongle.

Please do not attempt to disassemble, modify or repair the dongle. It can be broken.



Use the dongle in operation temperatures.

The dongle is designed to be operated in proper temperatures, use the dongle carefully in a high temperature change environment. Use or keep of your dongle outside of the recommended temperature ranges or on a humid place could cause damage or malfunction of the device. (Recommended temperature range: -20 ~ 50°C, relative humidity: 0 ~ 95%)



Avoid magnetic materials.

Avoid any magnetic contact that is not shielded or protected on or near the dongle.



Be careful a fire or water.

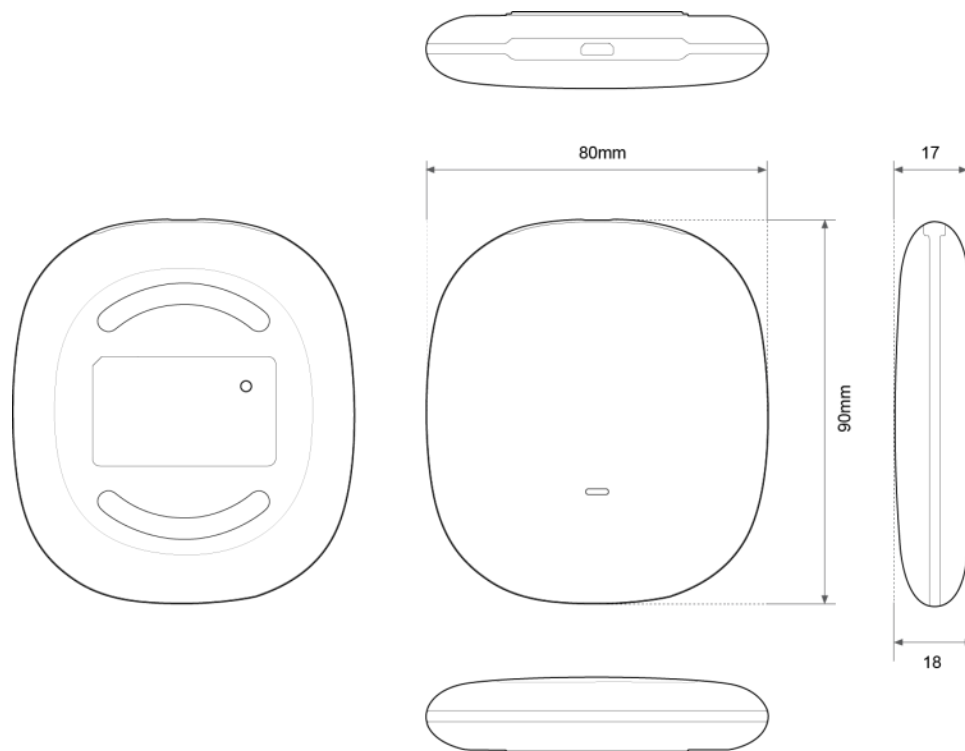
Contact a fire could change the shape and it may lead malfunction. The dongle is not a water protect product. Contact with liquids might cause a short circuit or damage parts.

2. Product Introduction

SG1000 is an Wi-Fi home gateway for Z-Wave devices such as Gas timer, smart plug, lighting switches. The devices can be monitored and controlled remotely by smart phones and tablets.

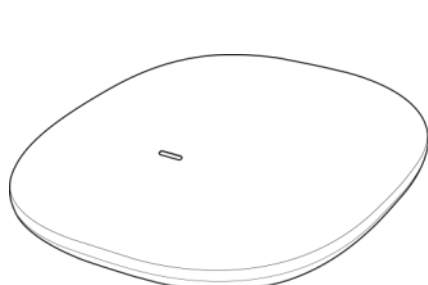
- Gateway systems: Home automation gateway and control devices like light switches or sensors are installed at home. You can monitor status and control devices.
- Cloud servers: Relays between gateway systems and remote controllers such like monitoring and controlling devices.
- Remote controllers: Provides users interfaces to control and monitor devices at home. It also notifies events in real time.
- Scene(user defined): Events to have triggers happened in certain conditions of devices can be defined. Different devices connected each other may carry new functions

2.1. Specification

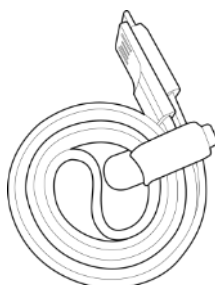


- MTK MT7620N 580MHz CPU
- 64MB RAM, 16MB FLASH Memory
- 2.4GHz 2T2R 802.11N Wi-Fi
- Z-Wave Central Static Controller for Korean Frequency
- Multicolor LED
- USB Powered
- Reset switch

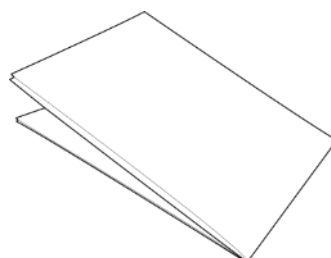
2.2. Components



SG1000 HUB

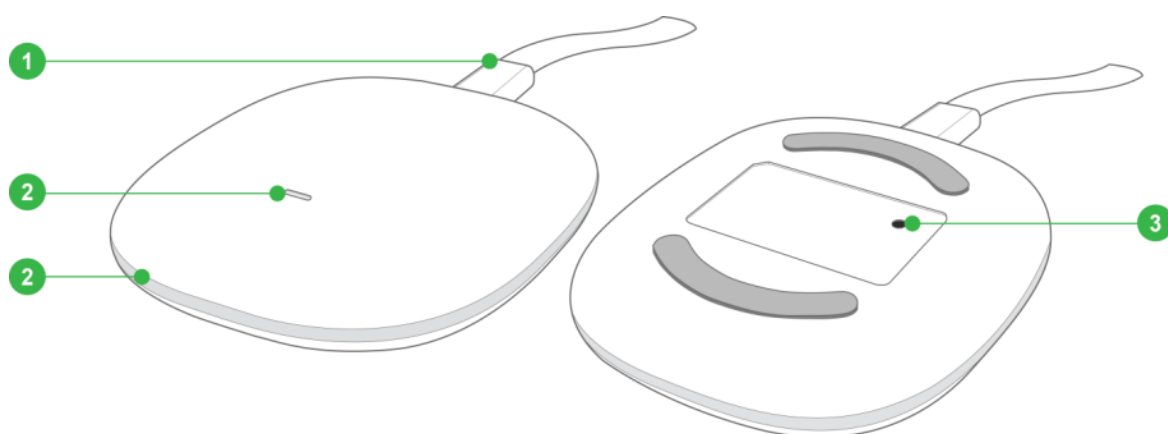


Micro USB Cable



User Manual

2.3. Term of part



1) Micro USB Cable

2) SG1000 notification LED

	STATE	LED COLOR
1	Not connected	- (Off)
2	Initializing	Red->Blue->Green (colors are changed)
3	H/W checked	Blinking Blue
4	User defined notification	White Magenta Yellow Green Cyan Blue Each colors can be blinked Off

3) Registration and factory Reset

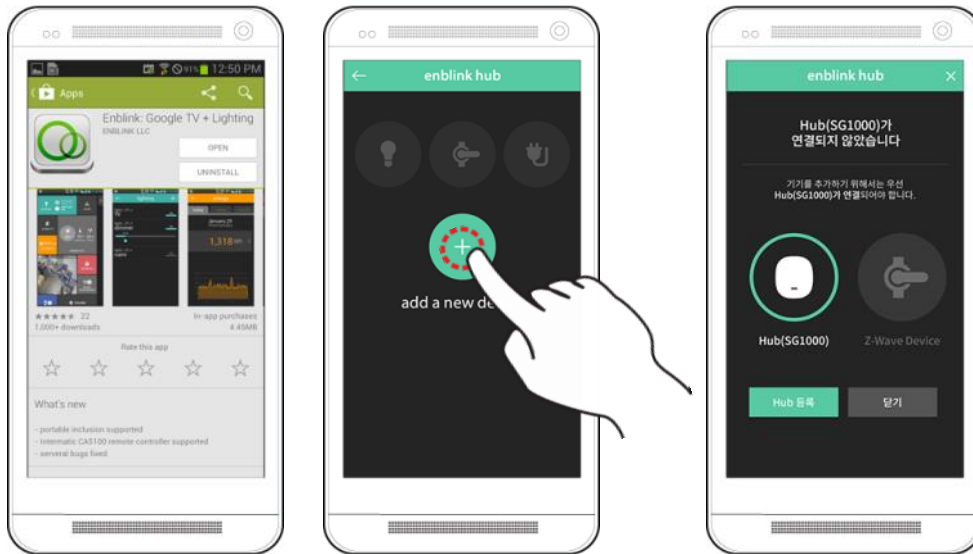
	MENU	BUTTON OPTION
1	Registration	Click the button on bottom side
2	Factory Reset	Press the button on bottom side longer than 5 seconds

Notice: Once SG1000 is registered, notification LED can be controlled in a lighting tile.

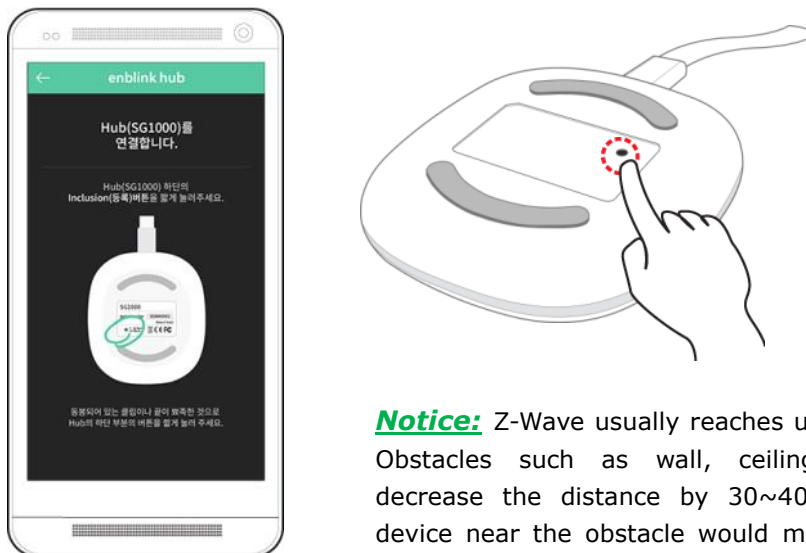
3. SG1000 Registrations

3.1. Hub Registration

- 1) Download ENBLINK app from Google Play store
- 2) Connect SG1000 to USB power and run the app.



- 3) Click the button on bottom side to set up Wi-Fi network.



Notice: Z-Wave usually reaches up to 30m (100feet). Obstacles such as wall, ceiling, refrigerator may decrease the distance by 30~40%. Another Z-Wave device near the obstacle would measure it by relaying the communication.

- 4) In around 10 seconds, it will show Wi-Fi network list. Choose your Wi-Fi network and put the password for it.

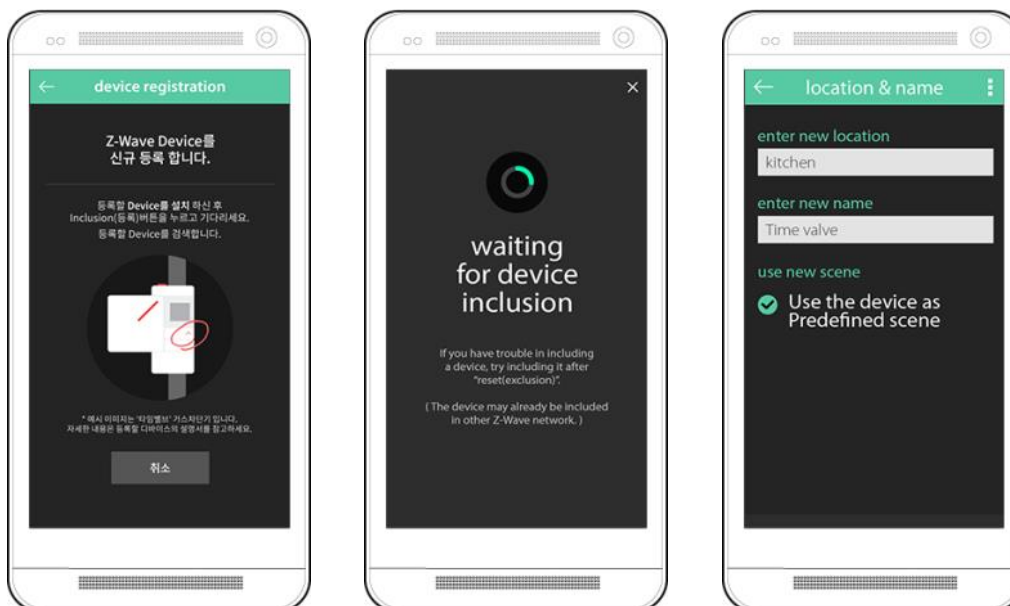


3.2. Device Registration

- 1) Devices can be registered once Wi-Fi connection is completed.

Notice: Devices can be registered later in "Device Management" menu.

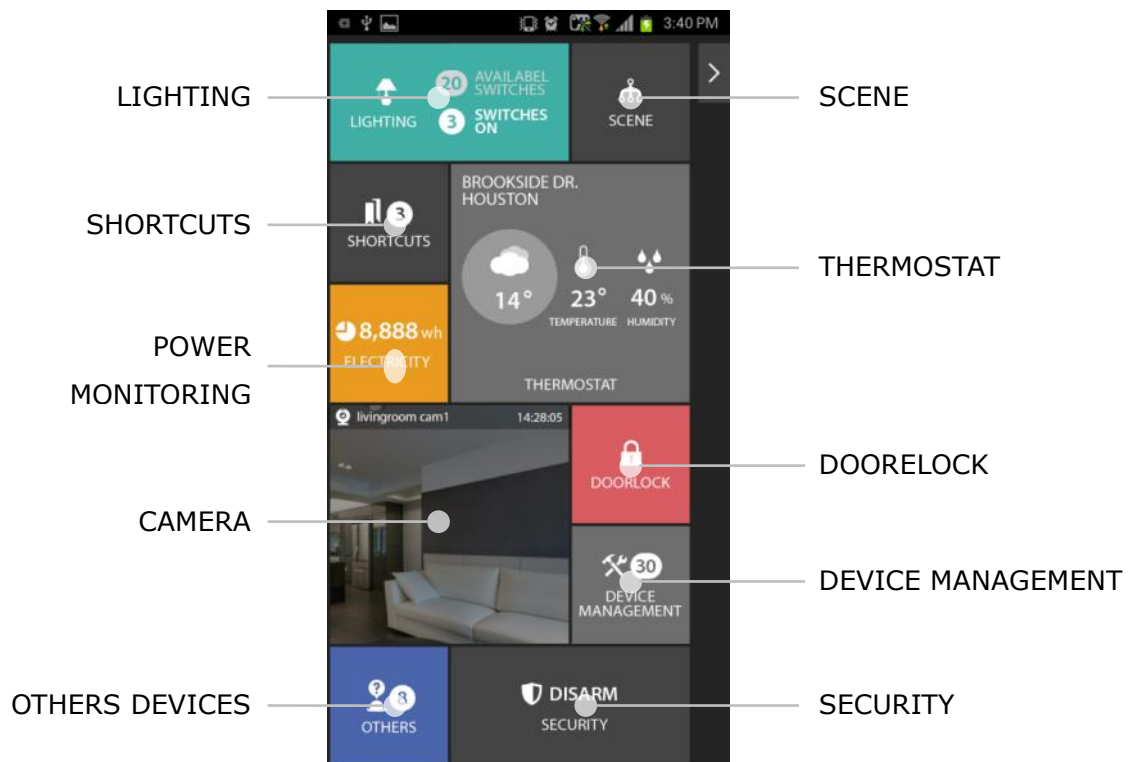
- 2) SG1000 will acknowledge when "Z-Wave Inclusion" button on the Gas timer is pressed.
- 3) Device registration is completed after name, location and device type is configured.



(Device in image: It's gas timer from Time Valve named "Time Valve Hybrid". Please refer to the home page of Time Valve.)

4. Basic Information

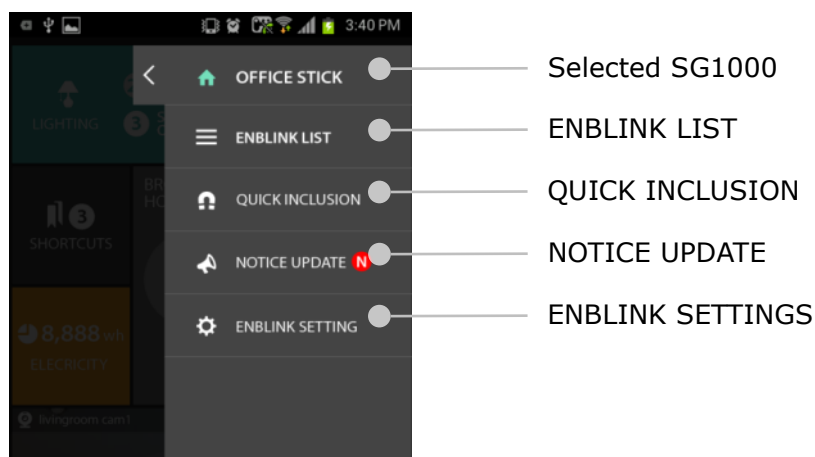
4.1. Dashboard



	Tile menu	Description
1	LIGHTING	Lights connected to switches or smart plugs can be controlled. The number of available switches and the number of switches turned on are displayed.
2	SCENE	Complicated actions can be executed according to scenarios defined by users. ex.) Turn the light on in a room if the door is opened
3	SHORTCUTS	Favorite devices can be accessed.
4	THERMOSTAT	Heating/Cooling/Fan can be controlled Location, outside temperature, indoor temperature and indoor humidity are displayed.
5	POWER MONITORING	Energy usage measured by smart energy plugs or power meter can be monitored.
6	CAMERA	Monitors where IP camera is installed in real time.
7	DOORLOCK	Door locks can be controlled and monitored.
8	DEVICE MANAGEMENT	New devices can be paired or not available devices can be removed.

9	OTHERS DEVICES	General functional devices can be controlled.
10	SECURITY	Security mode (Arm/Disarm/Arm Stay) can be configured

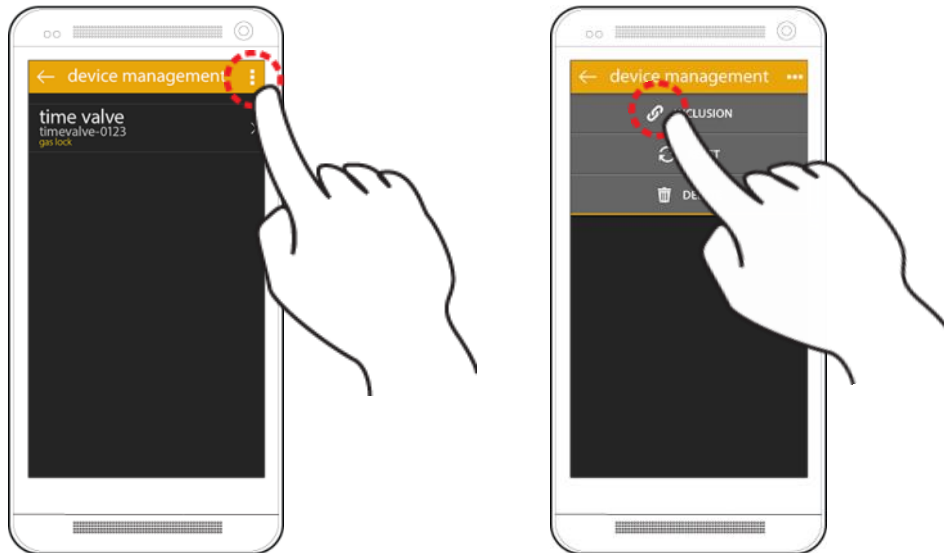
4.2. Sub-menu



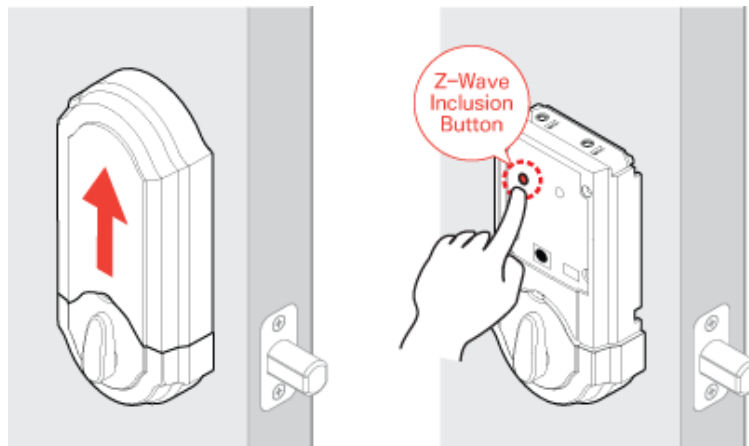
	Tile menu	Description
	SG1000 Name	Name of SG1000
1	ENBLINK LIST	All SG1000 dongles paired are displayed
2	QUICK INCLUSION	To pair devices quickly in the dash board.
3	NOTICE UPDATE	Notices or software updates are informed.
4	ENBLINK SETTINGS	Configuration such as passcode or nickname can be configured.

5. How to control

5.1. Paring device (Inclusion)

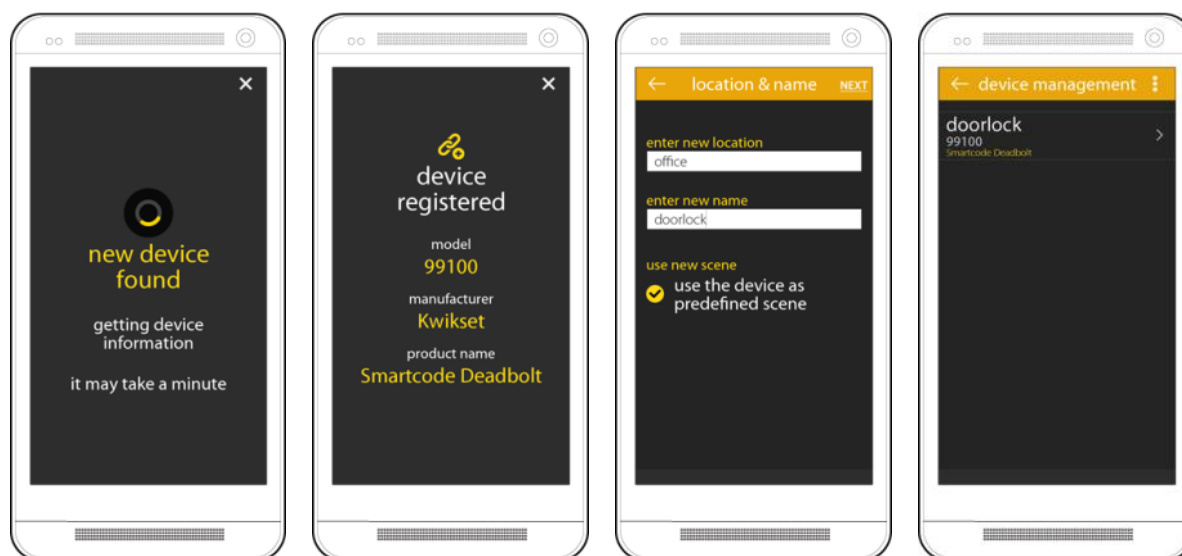


- 1) Choose 'Inclusion' in 'Device Management' menu(or 'Quick Inclusion' on quick menu on right side)
- 2) Install a target device.



(sample device: refer detail information of 'Kwikset Doorlock' at [_manufacture provided_](#).)

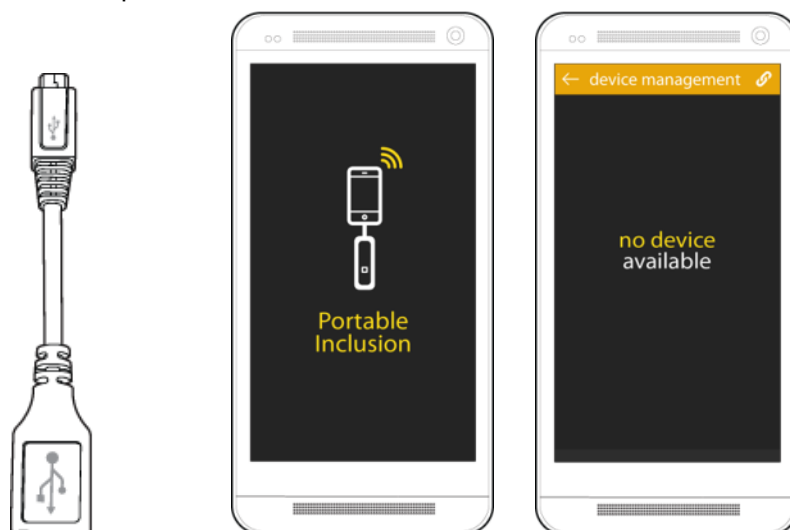
- 3) If inclusion button is pushed at Doorlock, it notifies signal on the remote application in the phone.



4) Location, name and type should be specified.

5.2. Portable Inclusion

If devices such as doorlocks or door window sensors are installed far from the Set-top box plugged in Enblink, in some cases, those might not be paired to Enblink properly because wireless can't be reached. In this case, you can plug Enblink out from the Set-top box and then plug in it using USB OTG cable into a phone which the remote application is installed. Now, you can bring the phone to where devices are installed nearby and then pair them.



OTG USB Cable

! Please refer [here](#) to know detail information regarding USB OTG cable.

- 1) Plug Enblink in into the phone using an USB OTG cable.
- 2) Portable Inclusion screen might be popped up.
- 3) You can pair a device like a normal inclusion.
- 4) Once pairing is done, you can plug Enblink out from the phone and then plug in into the Set-top box used before.

5.3. Compatible devices



Lighting



Security Sensors



Door Locks



IP Cameras

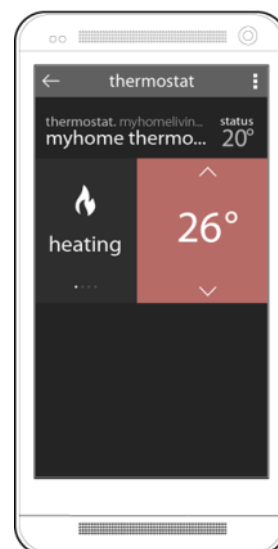
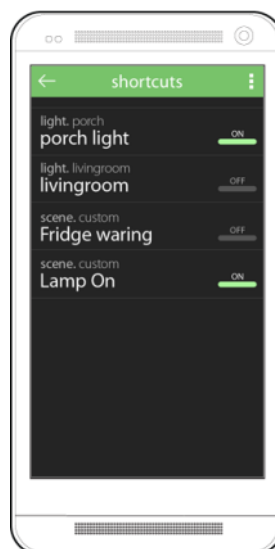
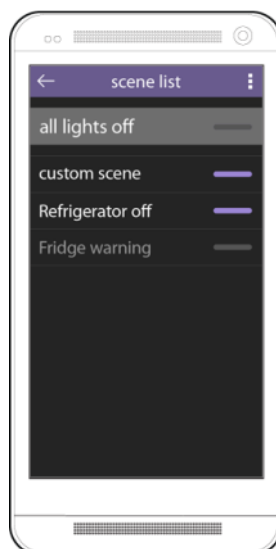
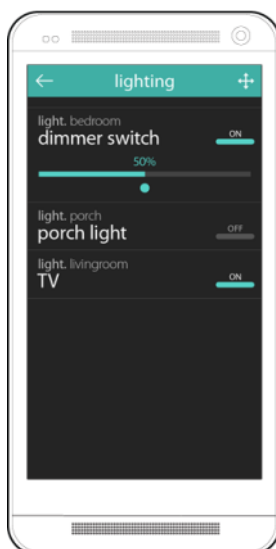
All other Z-wave devices in addition to above devices can be controlled by SG1000.

You can control light switches or thermostats in your living room. Complicated installation is not required and just simple pairing is enough to control devices.

! Please refer [here](#) to learn more Z-Wave devices

5.4. Control devices

- 1) Monitor and control states of each device accordingly
- 2) A device is added, removed, edited or reset on [Device Management] tile.



LIGHTING

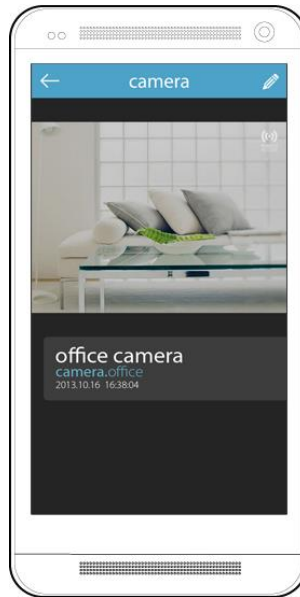
SCENE

SHORTCUTS

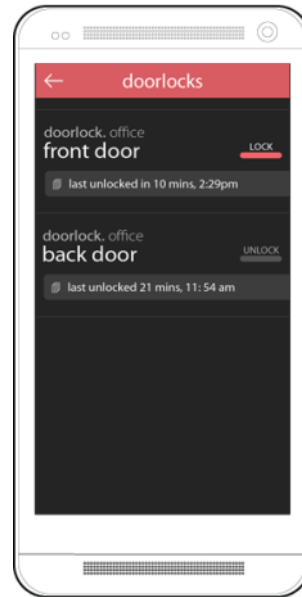
THERMOSTAT



ELECTRICITY



CAMERA



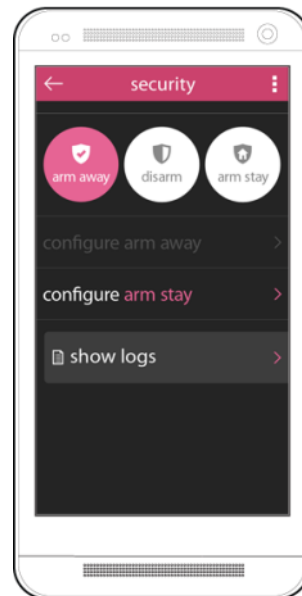
DOORLOCK



DEVICE MANAGEMENT



OTHERS



SECURITY

6. Product Information

6.1. Product information note

Model	SG1000
Purchase date	
Dealer	
Phone no. of dealer	
Serial number	

6.2. Customer Support

- E-mail: cs@enblink.com
- homepage: <http://www.enblink.com>

6.3. Warranty

If the dongle doesn't work properly, you can contact with the seller or Enblink support center. They will tell you what warranty condition is applied.

This device complies with Part 15 of the FCC Rules. Operation is subject to the following two conditions: (1) this device may not cause harmful interference, and (2) this device must accept any interference received, including interference that may cause undesired operation.

Changes or modifications not expressly approved by the party responsible for compliance could void the user's authority to operate the equipment.

NOTE: This equipment has been tested and found to comply with the limits for a Class B digital device, pursuant to Part 15 of the FCC Rules. These limits are designed to provide reasonable protection against harmful interference in a residential installation. This equipment generates, uses instructions, may cause harmful interference to radio communications. However, there is no guarantee that interference will not occur in a particular installation. If this equipment does cause harmful interference to radio or television reception, which can be determined by turning the equipment off and on, the user is encouraged to try to correct the interference by one or more of the following measures:

- Reorient or relocate the receiving antenna.
- Increase the separation between the equipment and receiver.
- Connect the equipment into an outlet on a circuit different from that to which the receiver is connected.
- Consult the dealer or an experienced radio/TV technician for help.