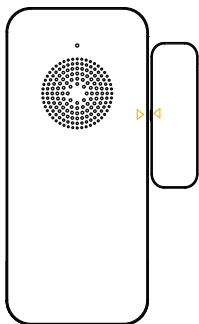


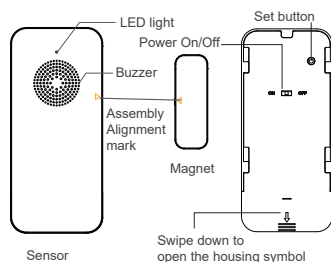
Sound and light door and window alarm User Manual



01/ Product Introduction

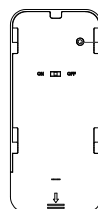
This sound and light door and window alarm consists of two parts: sensor and magnet. It adopts WiFi communication technology, can detect the open or closed status between doors and windows, and report the status change to APP. The sensor is suitable for different types of doors and windows.

02/ Functional Diagram



1

03/ Function Button Introduction



Press and hold the Setup button for 5 seconds, the buzzer will beep and the indicator light will flash for network configuration.

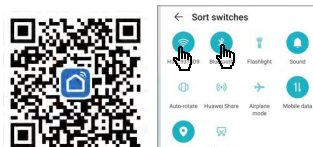
04/ Connect With Mobile APP

(1).Download APP

- Scan the QR code to download APP.
- Please go to the application market and search "Smart Life" to download the APP.

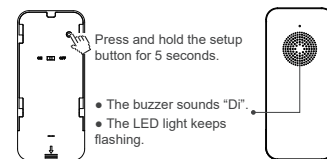
(2).Network with mobile phone.

① Connect to mobile phone Wi-Fi (2.4G frequency) and turn on Bluetooth.



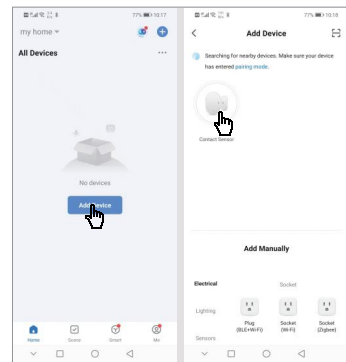
2

②The device enters the network configuration state.



③Open the APP and click"Add Device" (picture 1)

④ Discover the device and click"device" (picture 2)

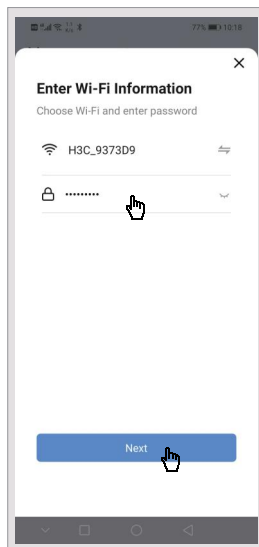


picture 1

3

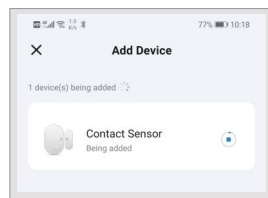
picture 2

⑤Enter the Wi-Fi "password" and click "Next".

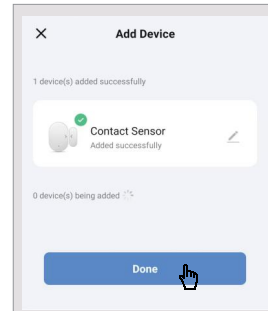


4

⑥show"adding".



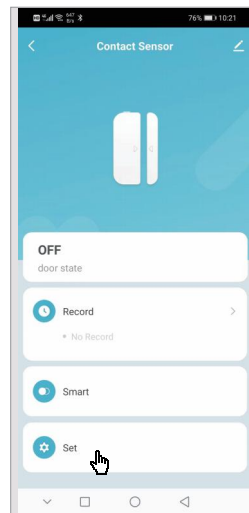
⑦ Click "Done" when you've added it successfully.



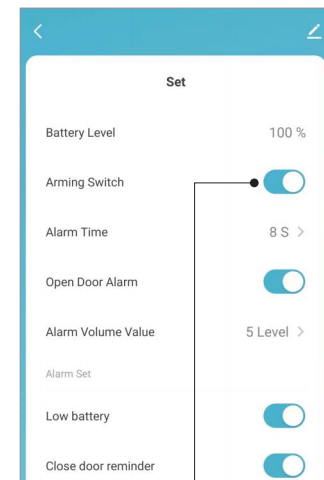
5

05/ APP Operation

(1).Click Settings to set arming/disarming/open door alarm/alarm time/alarm volume.

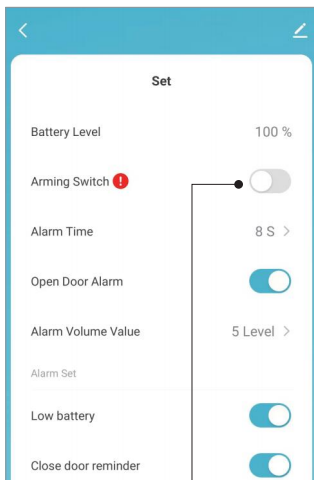


6



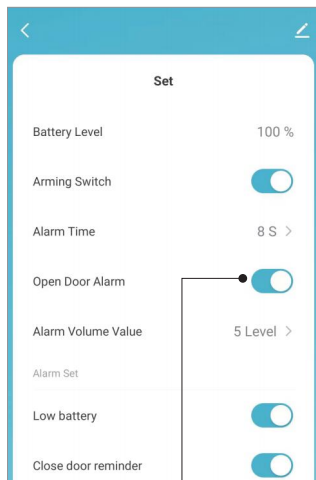
Turn on arming
The device is in hibernation and the device needs to be triggered to take effect.

7



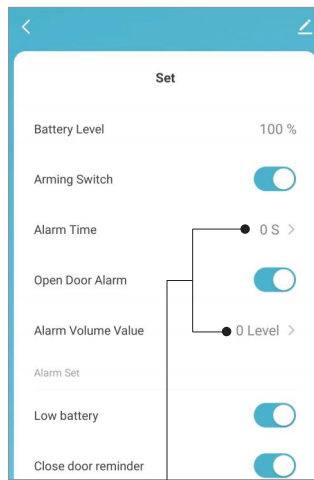
Disable arming
The device is in hibernation and the device needs to be triggered to take effect.

8



- Open Door Alarm: When the device is armed and the door magnet is opened, there is sound and light alarm.
- Close the door alarm: when the device is armed and the door magnet is opened, there is no sound and light alarm.

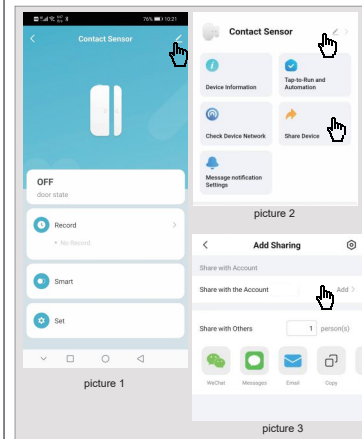
9



Note: When it is 0, the alarm is silent, and the APP receives the alarm.

10

- (2). Modify Device Name/shared Device.
- ① Click on the upper right corner. (picture 1)
 - ② Click "Contact Sensor" modify device name. (picture 2)
 - ③ Click "Share Device". and then click "Add" to add a share. (picture 2 / picture 3)

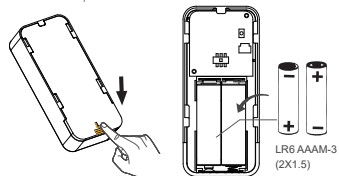


11

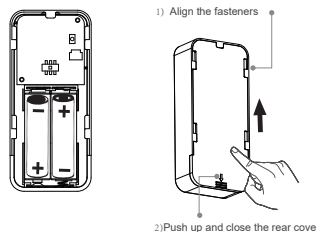
06/ Installation

(1). way for battery installation

- ① Open the rear cover of the sensor;
- ② Insert the battery;



- ③ End of battery installation;
- ④ Close the rear cover.



12

(2). 3M glue fixed installation method.

- ① Tear off side of release paper on two foam glue, and attach two foam glues respectively onto the fixing surfaces of the sensor and the magnetic stripe (as shown in Figure 1);
- ② Tear off side of release paper on the back of the Sensor and magnetic stripe and attach it at the installation position of a door or a window (as shown in Figure 2).

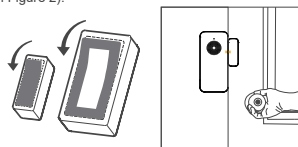
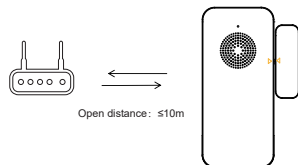


Figure 1

Figure 2

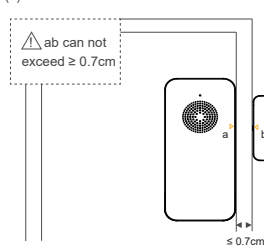
07/ Installation Precautions

- (1). The WiFi distance between the router and the device.



13

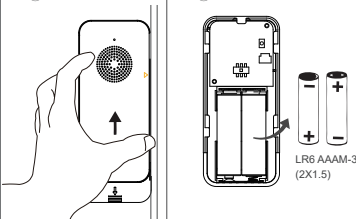
(2). Installation Precautions



08/ Maintenance

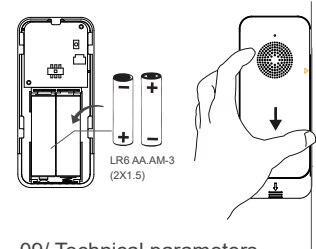
(1). Replacement battery

- ① Remove shell
- ② Remove batteries.



14

- ③ Replace with new battery;
- ④ Fix the housing.



09/ Technical parameters

Operating voltage: DC3V
Standby current: <30uA
Alarm current: <250mA
Alarm sound: <100db (within 30cm)
Battery specification: LR6 AA-AM-3 (2*1.5)
WiFi standard: IEEE 802.11b/g/n 2.4G

Environmental Protection

Waste electrical products should not be disposed of with household waste. Please recycle where facilities exist. Check with Local Authority or retailer for recycling advice.

15

FCC Statement

This device complies with part 15 of the FCC rules. Operation is subject to the following two conditions: (1) this device may not cause harmful interference, and (2) this device must accept any interference received, including interference that may cause undesired operation.

Caution: Changes or modifications not expressly approved by the party responsible for Compliance could void the user's authority to operate the equipment.

NOTE: This equipment has been tested and found to comply with the limits for a Class B digital device, pursuant to part 15 of the FCC Rules. These limits are designed to provide reasonable protection against harmful interference in a residential installation. This equipment generates uses and can radiate radio frequency energy and, if not installed and used in accordance with the instructions, may cause harmful interference to radio communications. However, there is no guarantee that interference will not occur in a particular installation. If this equipment does cause harmful interference to radio or television reception, which can be determined by turning the equipment off and on, the user is encouraged to try to correct the interference by one or more of the following measures:

- Reorient or relocate the receiving antenna.
- Increase the separation between the equipment and receiver.
- Connect the equipment into an outlet on a circuit different from that to which the receiver is connected.
- Consult the dealer or an experienced radio/TV technician for help important announcement .

Radiation Exposure Statement

To comply with FCC RF exposure compliance requirements, this grant is applicable to only mobile configurations. The antennas used for this transmitter must be installed to provide a separation distance of at least 20 cm from all persons and must not be co-located or operating in conjunction with any other antenna or transmitter.