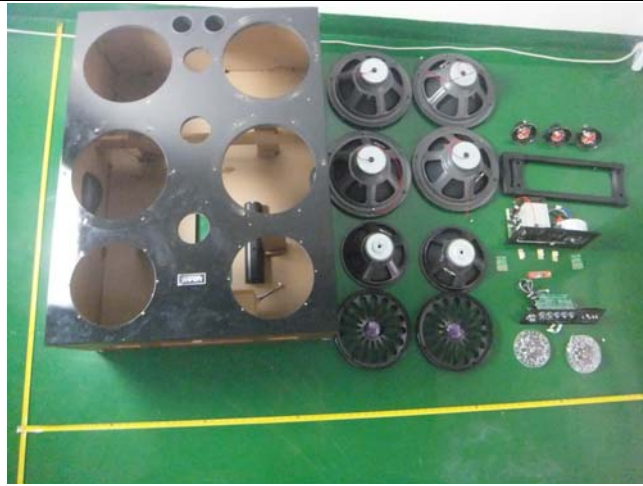
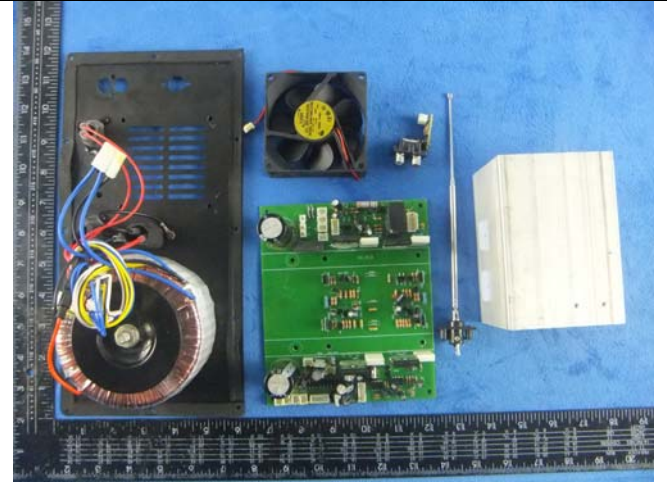


**Annex B.ii. Photograph: EUT Internal Photo**



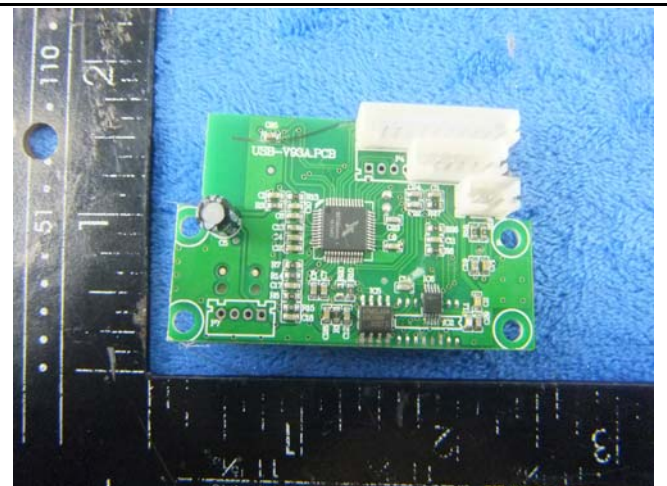
Cover Off - Top View 1



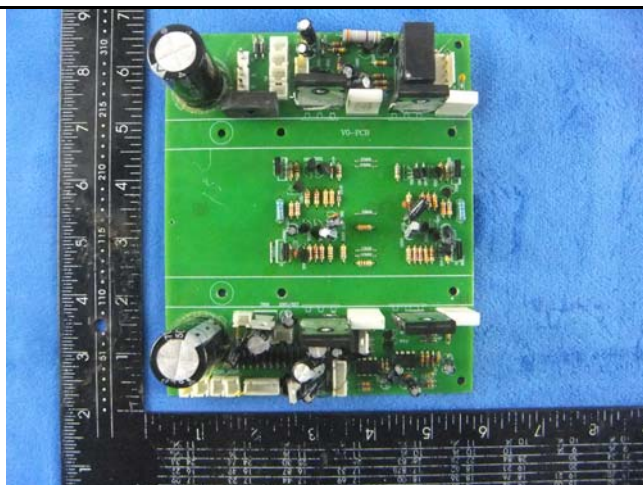
Cover Off - Top View 2



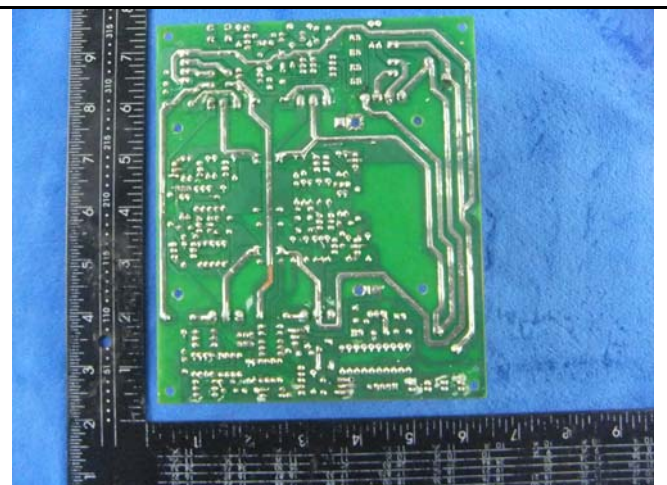
SD card board - Front View



SD card board - Rear View

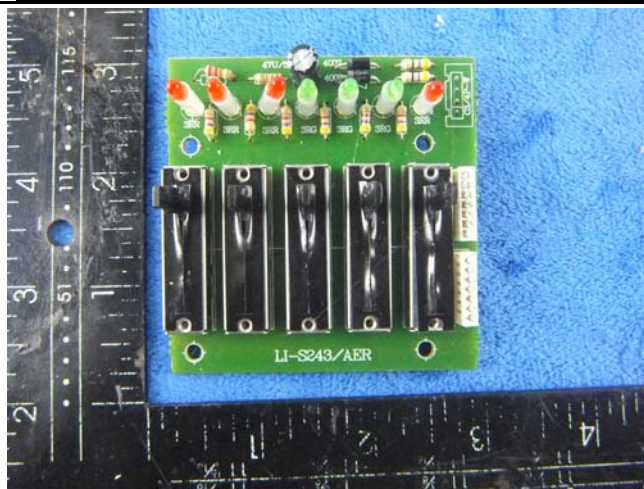


Power amplifier board - Front View

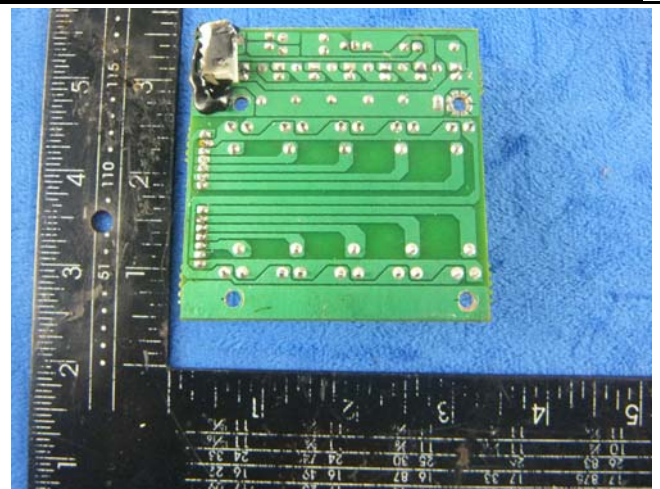


Power amplifier board - Rear View

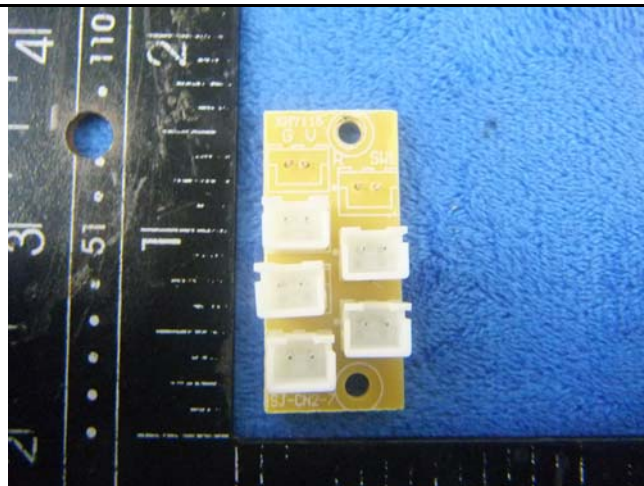




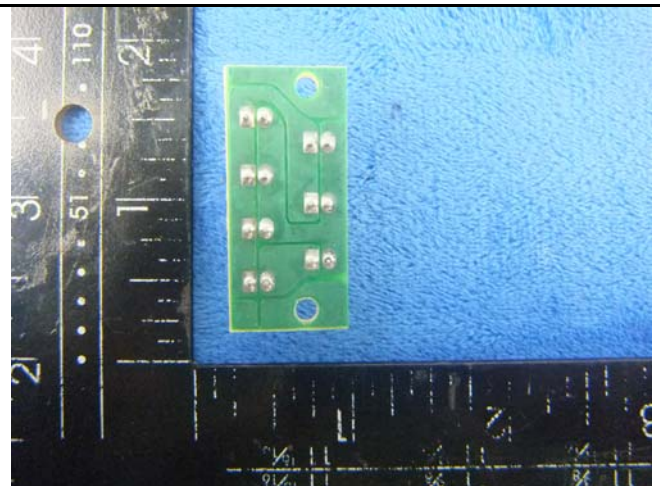
PCB board - Front View



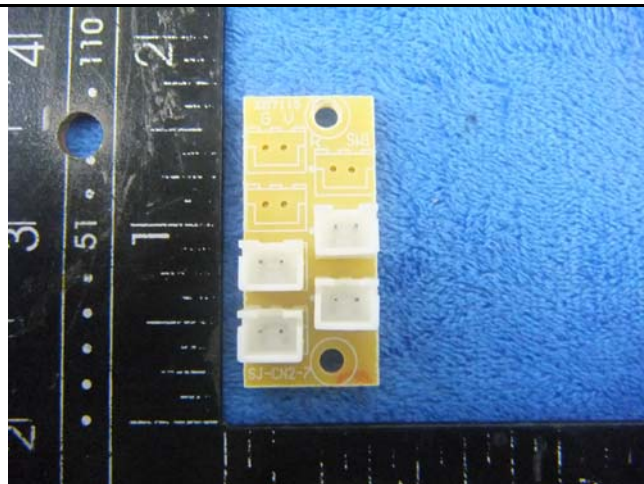
PCB board - Rear View



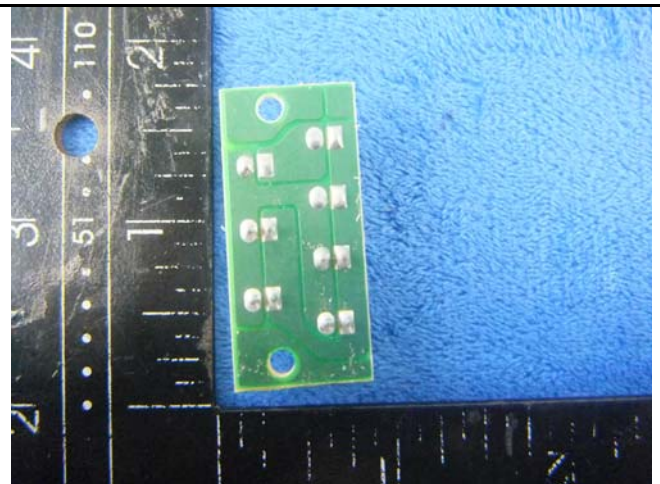
Connect board 1- Front View



Connect board 1- Rear View

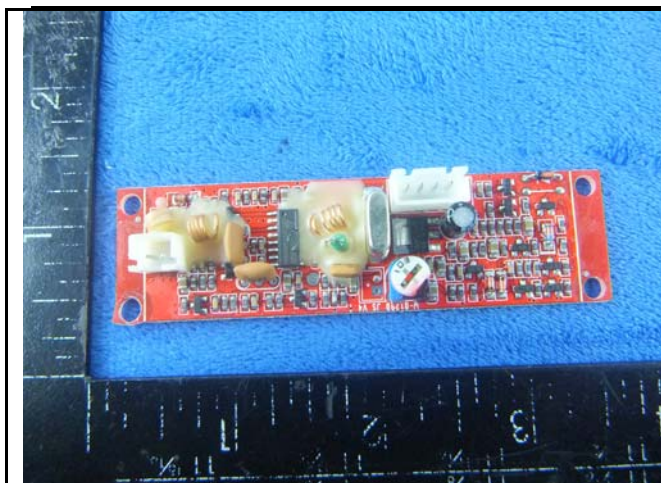


Connect board 2- Front View

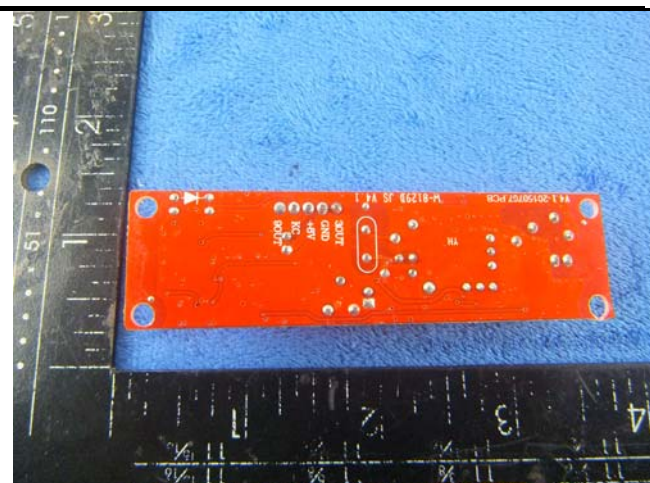


Connect board 2- Rear View

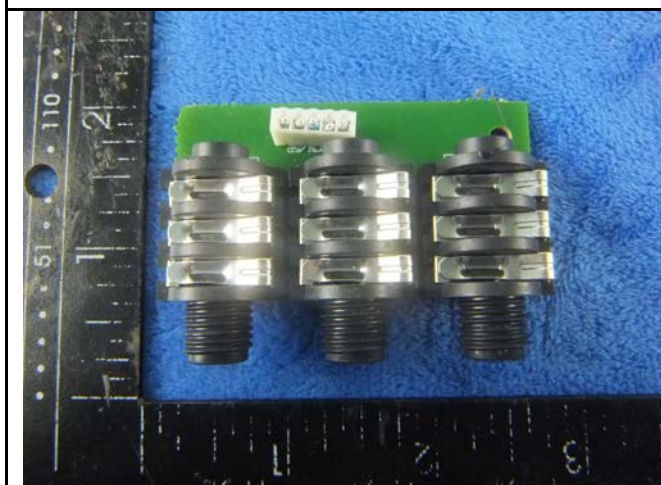




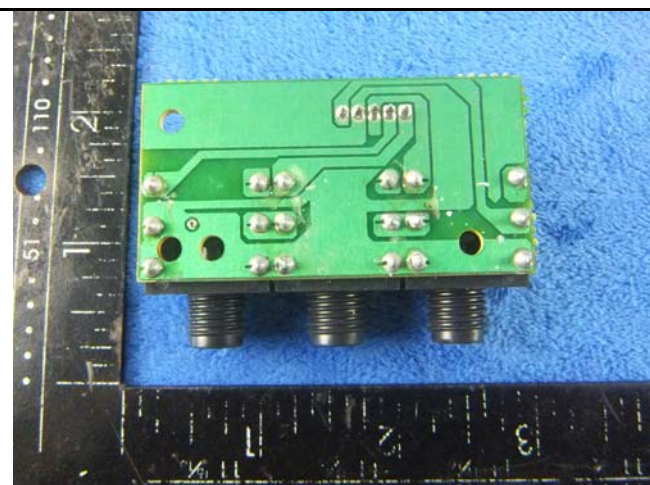
Receiver board - Front View



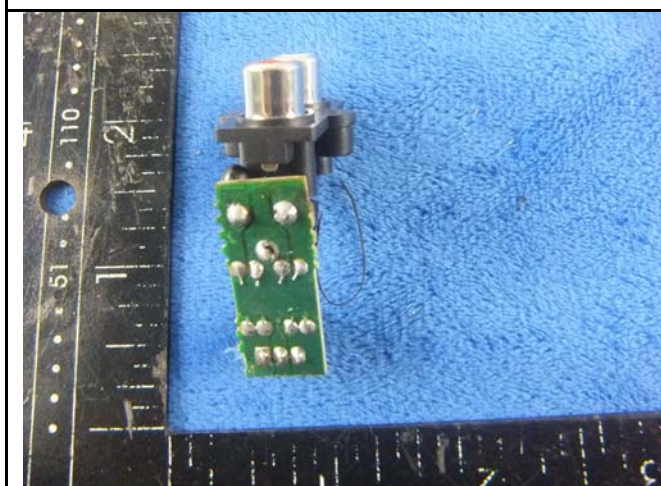
Receiver board - Rear View



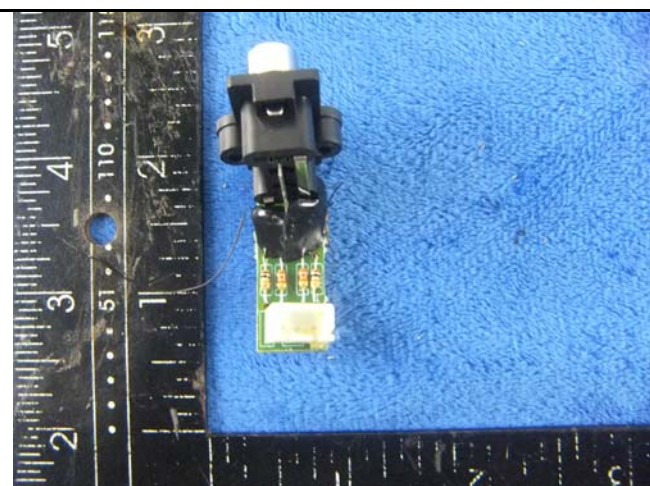
MIC&Guiton in board - Front View



MIC&Guiton in board - Rear View

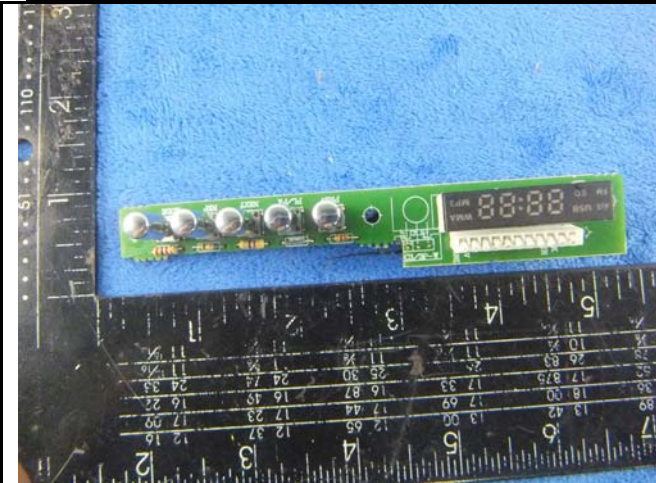


MIC board - Front View

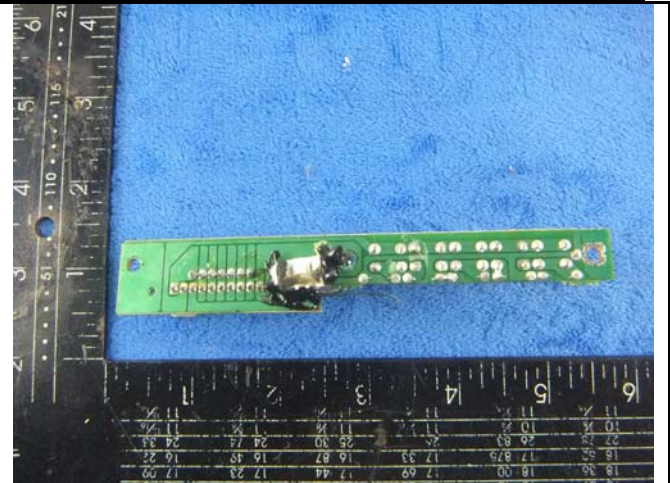


MIC board board - Rear View

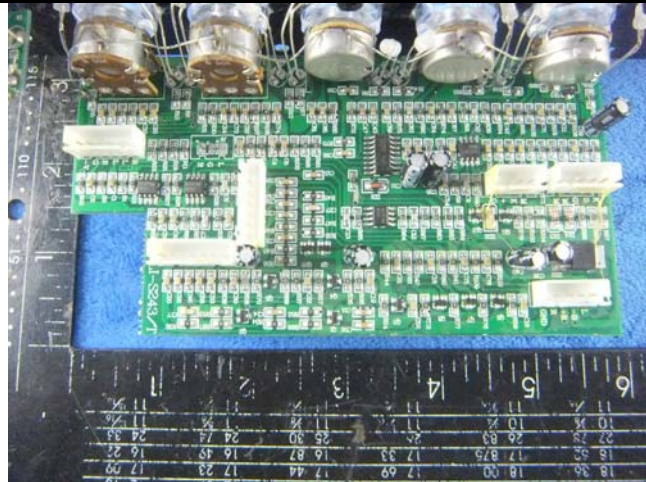




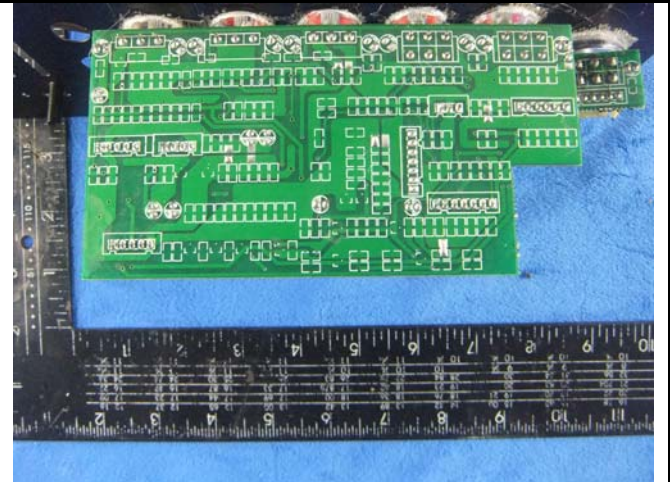
Button board – Front View



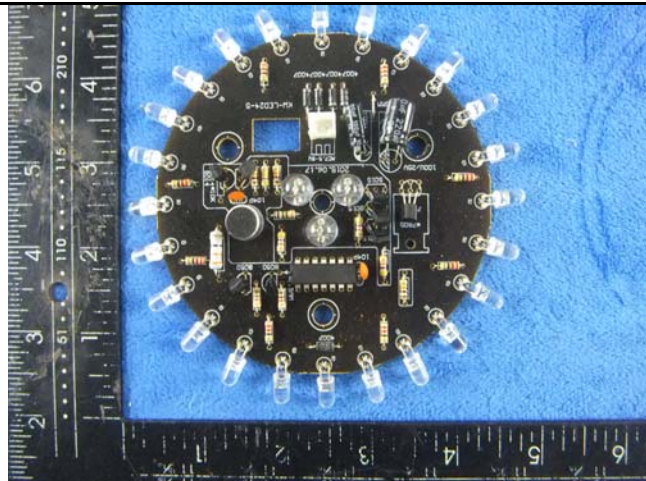
Button board – Rear View



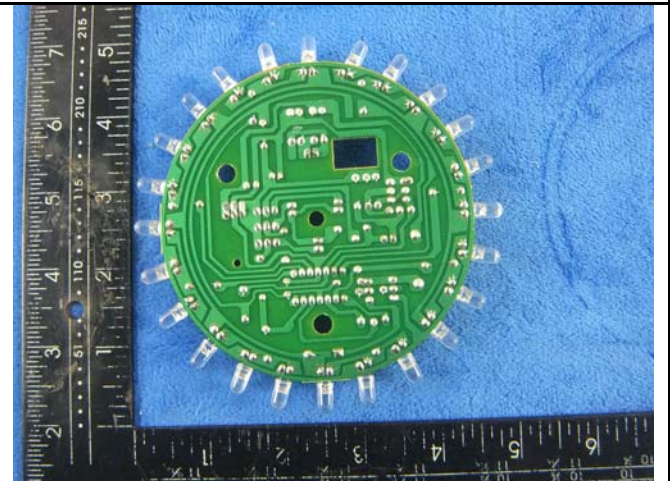
Adjustment board – Front View



Adjustment board – Rear View

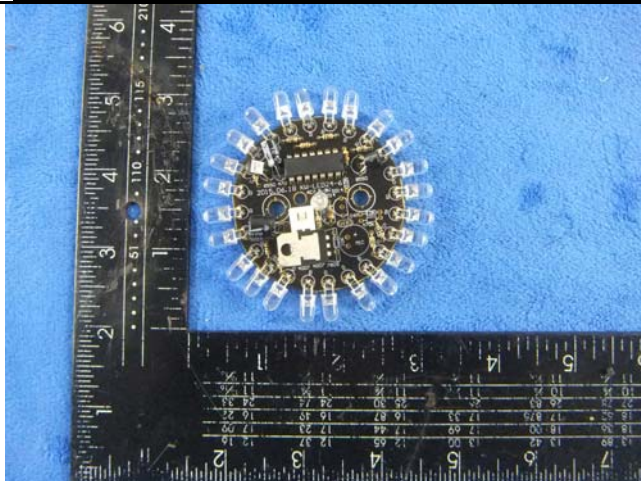


LCD board - Front View

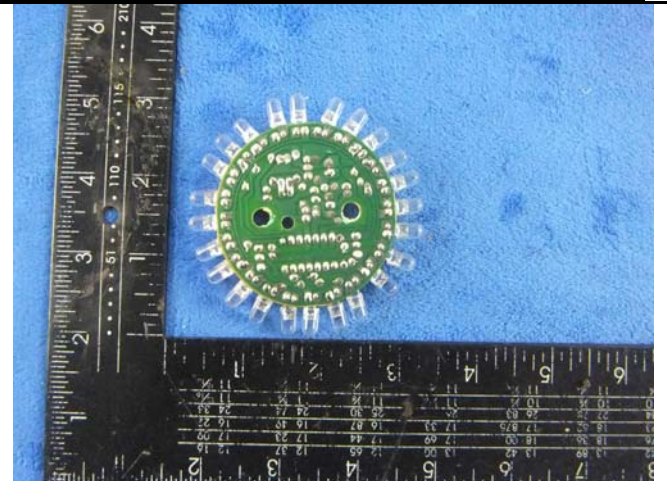


LCD board - Rear View





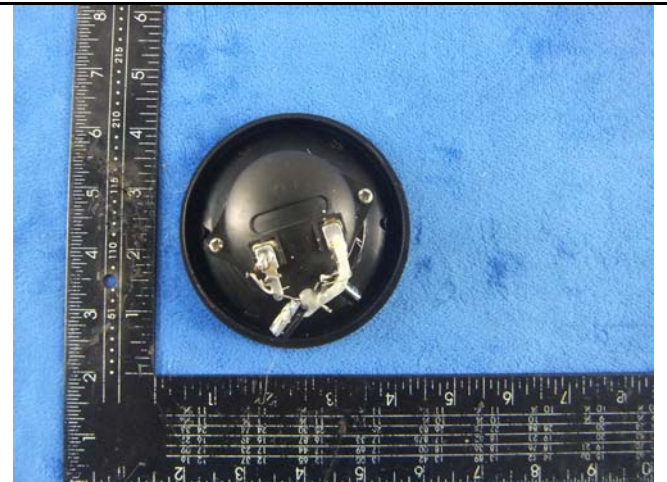
Small LCD board - Front View



Small LCD board - Rear View



LCD - Front View



LCD - Rear View



Speaker - Front View

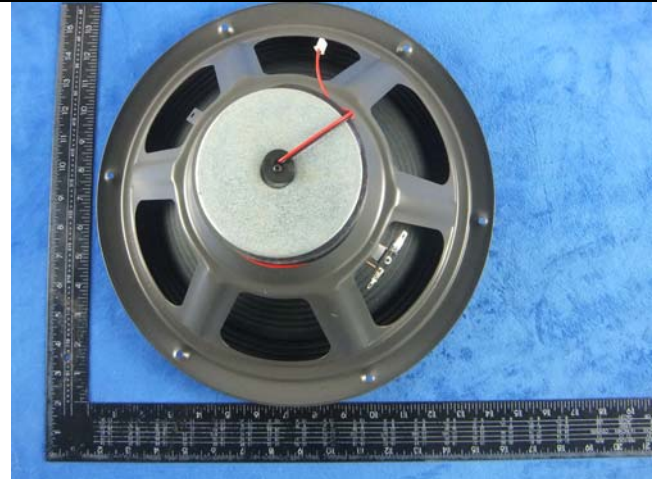


Speaker - Rear View





Speaker - Front View



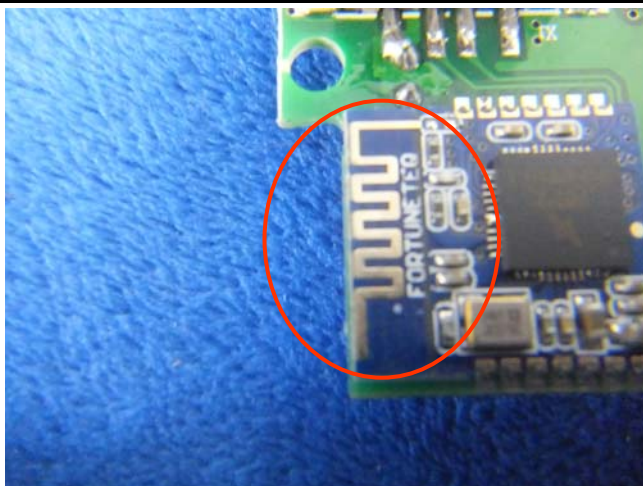
Speaker - Rear View



FM Antenan View



Receiving Antenan View



BT- Antenna View