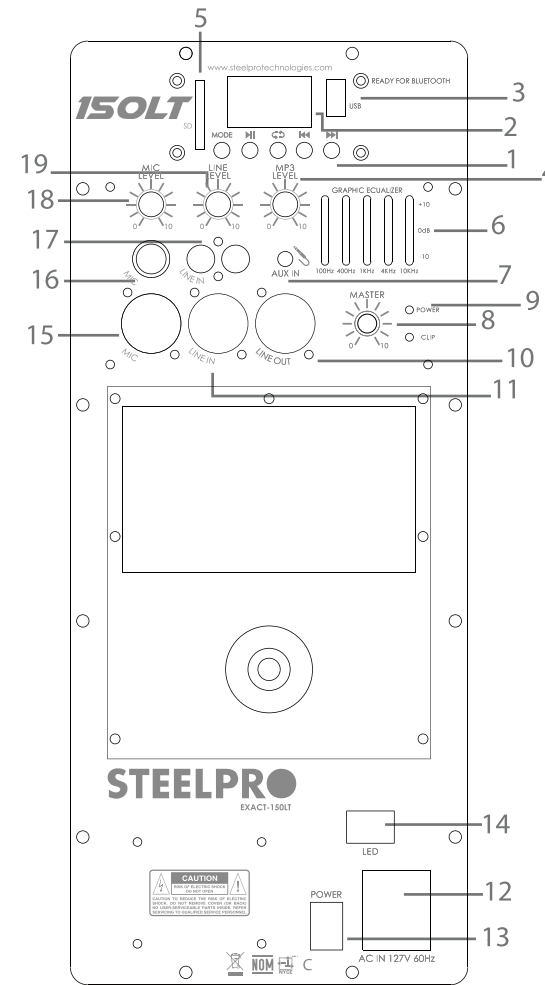
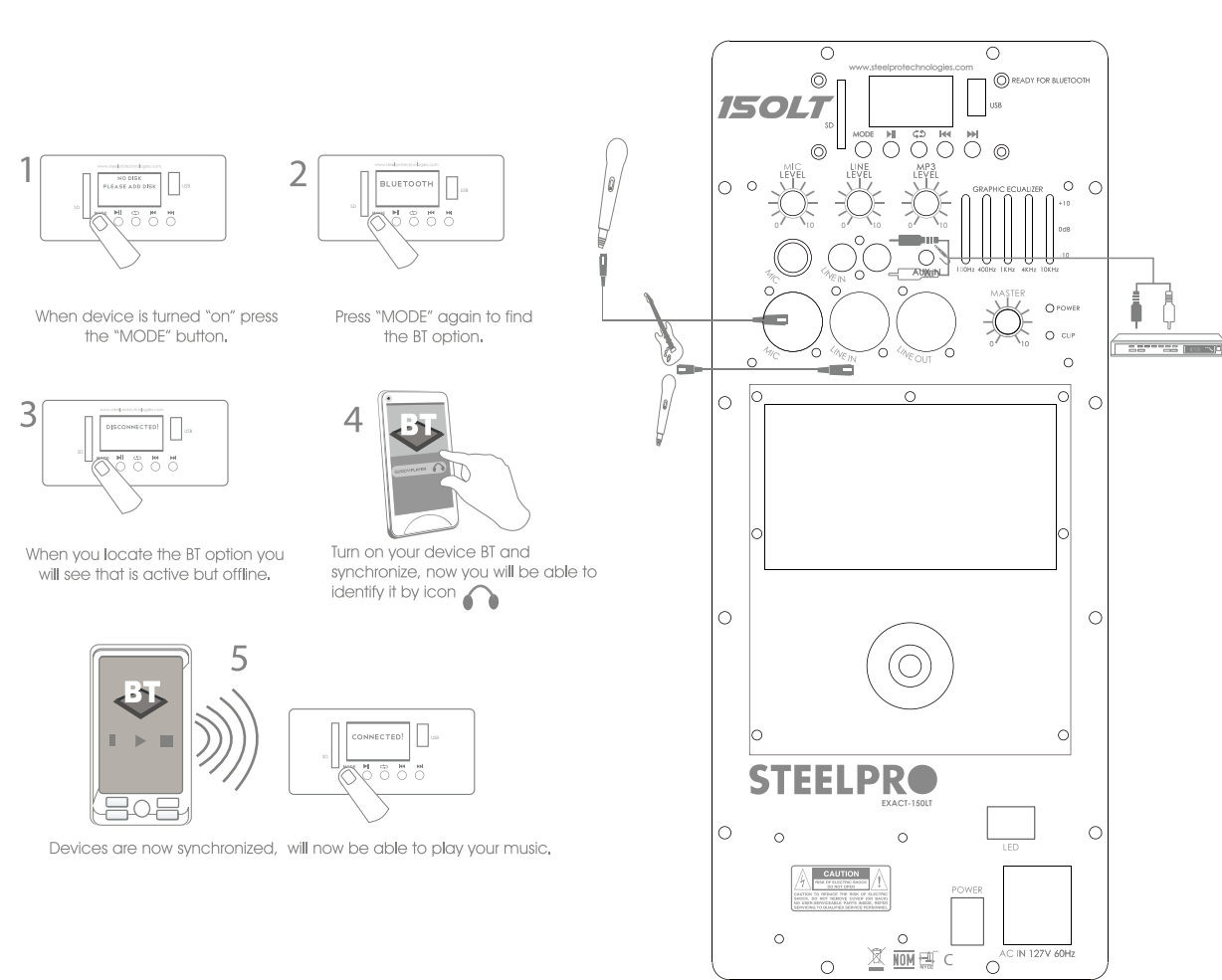


(Not available on all models)

## CONNECTIVITY

## FUNCTIONS



### 1. USB Reproducer

MODE	CAMBIO USB / SD / FM / BT / AUX
Reproducir / Pausar	
Repetir	
Anterior	
Siguiente	

### 2. LED display

### 3. USB Input

### 4. Mp3 volume control

### 5. SD Input

### 6. Graphic equalizer

### 7. Input Aux

### 8. Master volume

### 9. Power light

### 10. Line output

### 11. Line input

### 12. Power cable connector

### 13. power switch

### 14. Power Led switch

### 15. Microphone input canon

### 16. 6.3 Microphone input

### 17. Rca Input

### 18. Microphone control volume

### 19. Line level

# STEELPRO™

## BASS MACHINE

## USER MANUAL

(read carefully this manual)

# EXACT-150LT

PA LAREDO INC.  
1201 BUSINESS PARK DR. SUITE B  
MISSION TX 78572 USA  
956-4241550

CUSTOMER NAME: \_\_\_\_\_  
ADDRESS: \_\_\_\_\_  
CITY/STATE: \_\_\_\_\_  
PHONE NUMBER: \_\_\_\_\_  
DATE OF PURCHASE: \_\_\_\_\_

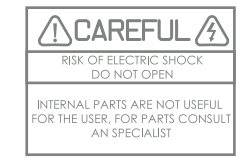
DESCRIPTION: \_\_\_\_\_  
MAKE: \_\_\_\_\_  
MODEL: \_\_\_\_\_

STORE STAMP

Please read carefully this manual before use your device  
keep this manual for future reference

### GUARANTEE POLICY

Name: \_\_\_\_\_  
Address: \_\_\_\_\_  
Product: \_\_\_\_\_  
Date of purchase: \_\_\_\_\_



The product you have purchased has a 1 year warranty for manufacturing defects, from the acquisition date given by: \_\_\_\_\_

### CONDICIONES

1. To enforce this warranty, you must submit the completed warranty policy and stamped by the store or selling unit with the product.
2. The company will repair the product or replace defective parts and components which came to require no charge to the consumer, including labor, provided when the fault is attributable to a manufacturing defect.
3. The repair time shall in no case exceed 30 working days from the receipt of the product in any of the places can be the guarantee.

### SERVICE CENTER MONTERREY (MONTERREY only)

AV. No. 117 Col. REGIO REGIO PARK INDUSTRIAL PARK  
Apodaca, Nuevo Leon C.P. 66633  
TEL: (81) 13340011

### SERVICE CENTER MEXICO (throughout the Republic)

Poniente 128 # 645 COL. INDUSTRIAL PARK  
VALLEJO, MEXICO DF AZCAPOTZALCO  
C.P.02300  
(55) 53684249

### THIS WARRANTY DOES NOT APPLY TO THE FOLLOWING:

1. When the product has been used in other than the normal conditions.
2. Where the product was not used according to the instructions of the product purchased is accompanied.
3. When the product has been altered or repaired by anyone other

### EXPORTADOR

STEELPRO TECHNOLOGIES  
1201 Business Park Dr. STE. B Mission  
Texas 78572  
(956) 424-1550

www.steelprotechnologies.com

## FCC Statement

Changes or modifications not expressly approved by the party responsible for compliance could void the user's authority to operate the equipment.

This equipment has been tested and found to comply with the limits for a Class B digital device, pursuant to Part 15 of the FCC Rules. These limits are designed to provide reasonable protection against harmful interference in a residential installation. This equipment generates uses and can radiate radio frequency energy and, if not installed and used in accordance with the instructions, may cause harmful interference to radio communications. However, there is no guarantee that interference will not occur in a particular installation.

If this equipment does cause harmful interference to radio or television reception, which can be determined by turning the equipment off and on, the user is encouraged to try to correct the interference by one or more of the following measures:

- Reorient or relocate the receiving antenna.
- Increase the separation between the equipment and receiver.
- Connect the equipment into an outlet on a circuit different from that to which the receiver is connected.
- Consult the dealer or an experienced radio/TV technician for help

This device complies with part 15 of the FCC rules. Operation is subject to the following two conditions (1) this device may not cause harmful interference, and (2) this device must accept any interference received, including interference that may cause undesired operation