

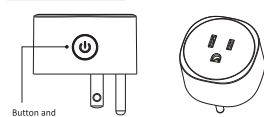
1. PRODUCT OVERVIEW

Smart Plug (HWL-SO09W/P) is a Wi-Fi switch which can be used to remotely on/off control the plugged devices after paired to the Wi-Fi network. Users can also monitor the on/off status of the plugged devices on mobiles devices from anywhere.

2. PRODUCT FEATURES

- Amazon Alexa and Google Assistant compatible
- Wi-Fi connection supported
- Timing setting available
- Firmware OTA upgrade supported
- Over-current protection supported (available for HWL-SO09WP ONLY)
- ETL, FCC certified

3. PRODUCT STRUCTURE



Button and LED Indicator

Button activities and LED Indicator

- 1) Press and hold the button for 5 seconds to enter into Wi-Fi connection (or configuration). The LED indicator will blink rapidly in EZ mode (or slowly in AP mode). EZ mode connection is set as default in Wi-Fi configuration. Press and hold the button for 5 seconds will enable the device switch between EZ mode and AP mode.
- 2) Short press the button to manually on/off control the device. The blue LED indicator will light on/off when plug is on/off.

4. SPECIFICATIONS

Power supply	AC 90-135V,60HZ
Nominal input voltage	AC 120V
Standby power loss	≤1W
Rated current	10Amax
Wireless transmitting and receiving frequency	2.412GHz—2.484GHz
Network protocol supported	IEEE802.11 b/g/n
Encryption type	WEP/WPA/AES,WPS
Transmitting power	802.11b:17dBm@2dBm@11Mbps 802.11g:15dBm@2dBm@54Mbps 802.11n:13dBm@2dBm@MCS7_HT20
Receiving sensitivity	802.11b:-91dBm@1Mbps 8%PER 802.11g:-75dBm@9Mbps 10%PER 802.11n:-72dBm@MCS7_HT20 10%PER
Vector error EVM	802.11b:≤35% 802.11g:≤26dBm max 802.11n:≤28dBm max.@MCS7—HT20
Working temperature	-10—+40 C
Storage temperature	-20—+60 C
Relative humidity	8%—80%RH

5. APP DOWNLOAD AND ACCOUNT BINDING

5.1 Scan the QR code below to download APP for Android and IOS system. Or you can download the "Simple Home Connect" APP on Apple Store and Google Play.

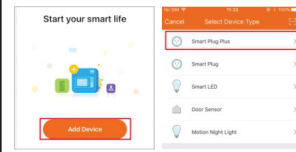


Android IOS

5.2 Start the APP and register an account with your email address/mobile number (mobile number registration available for China mainland users ONLY), and then log in APP with the registered account.

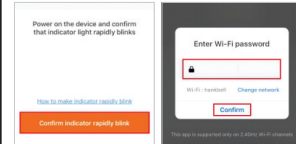
6. ADD DEVICE

6.1 Click "ADD Devices" and select the Device Type "Smart Plug Plus".



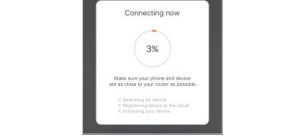
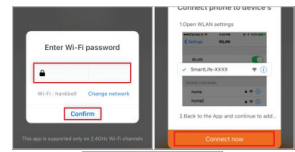
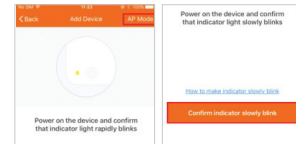
EZ mode

Plug will blink fast in blue when powered on in EZ mode. Input the password of the designated Wi-Fi network to include the device to Cloud. Waiting for around 30 seconds before the device inclusion process is complete.



AP mode

Plug will blink fast in blue when powered on. Press and hold the button for 5 seconds and then release. The LED indicator will blink slowly in blue. Choose AP Mode, select the Wi-Fi network your mobile is connected to and enter the Wi-Fi password. Select the device AP name in Wi-Fi list "SmartLife-xxx" to finish the Wi-Fi connection. APP will jump to "connection successful" page when the Wi-Fi connection process is complete.



6.2 Users can re-name or share the device after Wi-Fi connection is finished. Make sure the device is working in EZ/AP mode, if the APP works in EZ/AP mode.

NOTE:

- This product is intended for indoor use only in dry locations.
- Please ensure the security of electricity: Max. current load cannot be higher than 10A. Max. power load cannot be higher than 1200W.
- The LED indicator will blink in blue and shut off in 10 seconds when current load is higher than 11.5A in 120V rated working voltage. (Applicable only to SO09WP)

7. FCC NOTICE

This device complies with part 15 of the FCC Rules. Operation is subject to the following two conditions:
 (1) This device may not cause harmful interference
 (2) This device must accept any interference received, including interference that may cause undesired operation.

The manufacturer is not responsible for any radio or tv interference caused by unauthorized modifications or change to this equipment. Such modifications or change could void the user's authority to operate the equipment.

This equipment has been tested and found to comply with the limits for a Class B digital device, pursuant to part 15 of the FCC Rules. These limits are designed to provide reasonable protection against harmful interference in a residential installation. This equipment generates, uses and can radiate radio frequency energy and, if not installed and used in accordance with the instructions, may cause harmful interference to radio communications. However, there is no guarantee that interference will not occur in a particular installation. If this equipment does cause harmful interference to radio or television reception, which can be determined by turning the equipment off and on, the user is encouraged to try to correct the interference by one or more of the following measures:

- Reorient or relocate the receiving antenna.
- Increase the separation between the equipment and receiver.
- Connect the equipment into an outlet on a circuit different from that to which the receiver is connected.
- Consult the dealer or an experienced radio/TV technician for help.

8. QUICK GUIDE OF USING AMAZON ECHO TO CONTROL SMART DEVICES

- 8.1 What you need to get started**
 Before using Echo to control your smart devices, please make sure that the following conditions are met:
- Stable Wi-Fi network which could access to Amazon server.
 - An Echo device, such as Echo, Echo Tap, or Echo Dot.
 - A valid Amazon Alexa account.
 - Simple Home Connect APP and a registered account.
 - At least one device under your Simple Home Connect account.

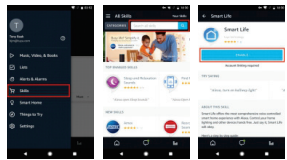
8.2 Add devices in Simple Home Connect app (Refer to App Instruction)

You can skip this part if you've already added some devices to your Simple Home Connect account.

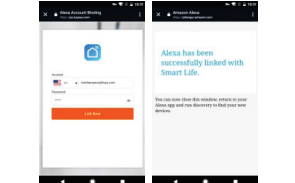
- **Download Simple Home Connect app (Refer to App Instruction)** Search "Simple Home Connect" in App Store or Google Play to install the app.
- **IOS version download: App Store**
- **Android version download: Google Play**
- **Register a Simple Home Connect account and sign in the app (Refer to App Instruction)**
- **Add device and re-name the device (Refer to App Instruction)**

8.3 Link Simple Home Connect account to Echo

1) Tap "Skills" in the hamburger menu, then search "Smart Life". Select "Smart Life" and tap "ENABLE" to enable the Skill.

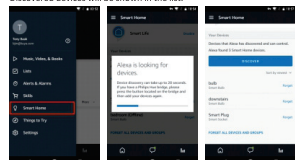


2) You will be re-directed to the account link page. Type in your Simple Home Connect account and password, don't forget to select the country/region where your account belongs to. Then tap "Link Now" to link your Simple Home Connect account. The country/region, the account, and the password must Match exactly the same with the Simple Home Connect account. Close the window when "Alexa has been successfully linked with Smart Life" notice is prompted out.



8.4 Control your smart devices through Echo

1) Discover devices
 Echo needs to discover your smart devices for voice control. You can say "Alexa, discover devices" to Echo. Echo will discover devices which have already been added in the Simple Home Connect app. You can also tap "DISCOVER" to discover the smart devices. Discovered devices will be shown in the list.



Note:

- Echo needs to go through "Discover" again after the device is re-named on Simple Home Connect APP.
 - If the Echo cannot find the devices added in Simple Home Connect APP, please disable the Smart Life skill first and go through the "Smart Life" skill "ENABLE", APP account login and device discover again to make Echo voice control work.
- 2) Voice control your devices**
 Now you can control your smart devices through Echo. Here below is an example of how to voice control the device "bedroom plug" with Echo:
- Alexa, turn on bedroom plug
 - Alexa, turn off bedroom plug

9. QUICK GUIDE OF USING GOOGLE HOME TO CONTROL SMART DEVICES

9.1 Control your smart devices through Google Home

Before using Google Home to control your devices, make sure the following conditions are met:

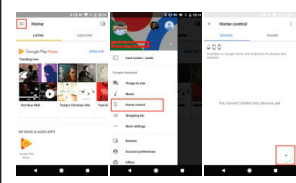
- A Google Home device, or Android phone with Google Assistant.
- Latest Google Home app.
- Latest Google app (Android only)
- A Google account.
- The device display language must be set to English US.
- Simple Home Connect app and a related account.
- Smart devices.

9.2 Add devices in Simple Home Connect app (Refer to App Instruction)

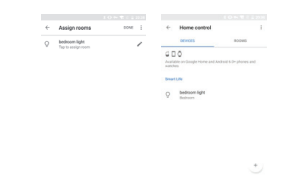
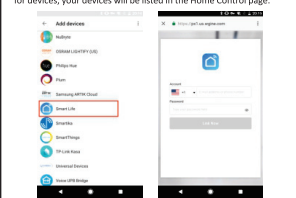
You can skip this part if you've already added some devices to your Simple Home Connect account. And refer to **8.2 Add devices in Simple Home Connect app** for adding devices in Simple Home Connect APP.

9.3 Link Simple Home Connect account in Home Control

1) Tap "Home Control" in the hamburger menu on the Google Home app's Home page, then tap "+".



2) Find "Smart Life" in the list. In the new window, select your Simple Home Connect account's region, type your Simple Home Connect account and password, then tap "Link Now". After you assign rooms for devices, your devices will be listed in the Home Control page.



9.4 Control your smart devices through Google Home

Now you can control your smart devices through Google Home. Here below is an example of how to voice control the device "bedroom plug" with Google Assistant:

- Ok Google, turn on bedroom plug
- Ok Google, turn off bedroom plug

The device has been evaluated to meet general RF exposure requirement. To maintain compliance with FCC's RF exposure guidelines, this equipment should be installed and operated with a minimum distance of 20cm between the radiator and your body.