



TEST REPORT

FCC ID: 2AIMW-WICA

Applicant : Beijing Sportmoo Technology Co., Ltd
Address : Room A1007, Xueyan Business Building, Tsinghua University
Science Park, Haidian District, Beijing, PR.China

Equipment under Test (EUT):

Name	:	WICA Personal Trainer
Model	:	WICA

Standards: FCC PART 15, SUBPART C : 2015 (Section 15.247)
ANSI C63.4:2014 and ANSI C63.10:2013

Report No : T1860772 02
Date of Test : May 10- May 30, 2016
Date of Issue : May 31, 2016

Test Result : PASS

In the configuration tested, the EUT complied with the standards specified above
Authorized Signature

(Mark Zhu)
Manager

The manufacture should ensure that all the products in series production are in conformity with the product sample detailed in this report. If the product in this report is used in any configuration other than that detailed in the report, the manufacturer must ensure the new system complies with all relevant standards. Any mention of Shenzhen Alpha Product Testing Co., Ltd. Or test done by Shenzhen Alpha Product Testing Co., Ltd. Approvals in connection with, distribution or use of the product described in this report must be approved by Shenzhen Alpha Product Testing Co., Ltd. Approvals in writing.

TABLE OF CONTENT

Description	Page
1 General Information -----	4
1.1 Description of Device (EUT)-----	4
1.2 Description of Test Facility-----	5
2 EMC Equipment List -----	5
3 Test Procedure-----	6
4 Summary of Measurement -----	7
4.1 Summary of test result-----	7
4.2 Test connection -----	7
4.3 Assistant equipment used for test-----	8
4.4 Test mode-----	8
4.5 Test Conditions -----	9
4.6 Measurement Uncertainty (95% confidence levels, k=2) -----	9
5 Spurious Emission-----	10
5.1 Radiation Emission -----	10
5.1.1 Radiation Emission Limits(15.209) -----	10
5.1.2 Test Setup -----	10
5.1.3 Test Procedure-----	12
5.1.4 Test Equipment Setting For emission test Result -----	12
5.1.5 Test Condition -----	13
5.1.6 Test Result -----	13
6 POWER LINE CONDUCTED EMISSION -----	19
6.1 Conducted Emission Limits(15.207)-----	19
6.2 Test Setup -----	19
6.3 Test Procedure-----	20
6.4 Test Results -----	20
7 Conducted Maximum Output Power-----	23
7.1 Test limit -----	23
7.2 Test Procedure-----	23
7.3 Test Setup -----	23
7.4 Test Results -----	23
8 PEAK POWER SPECTRAL DENSITY -----	25
8.1 Test limit -----	25
8.2 Method of measurement -----	25
8.3 Test Setup -----	25
8.4 Test Results -----	26
9 Bandwidth-----	29
9.1 Test limit -----	29
9.2 Method of measurement -----	29
9.3 Test Setup -----	29
9.4 Test Results -----	29
10 Band Edge Check -----	33
10.1 Test limit -----	33
10.2 Test Procedure-----	33
10.3 Test Setup -----	33
10.4 Test Result -----	33

11	Antenna Requirement-----	37
11.1	Standard Requirement-----	37
11.2	Antenna Connected Construction-----	37
11.3	Result -----	37
12	Test setup photo-----	38
13	Photos of EUT -----	40

1 General Information

1.1 Description of Device (EUT)

Trade Name : N/A

EUT : WICA Personal Trainer

Model No. : WICA

DIFF : N/A

Radio Technology : Bluetooth 4.0

Antenna Type : Integrated Antenna, Maximum Gain is 4.5dBi.

Operation frequency : 2402MHz -2480MHz

Channel No. : 40 Channels

Modulation : GFSK

Power Supply : DC 7.4V from battery or DC 5V from adapter for charging

Applicant : Beijing Sportmoo Technology Co., Ltd

Address : Room A1007, Xueyan Business Building, Tsinghua University Science Park,
Haidian District, Beijing, PR.China

Manufacturer : Beijing Sportmoo Technology Co., Ltd

Address : Room A1007, Xueyan Business Building, Tsinghua University Science Park,
Haidian District, Beijing, PR.China

1.2 Description of Test Facility

Shenzhen Alpha Product Testing Co., Ltd
Building B, East Area of Nanchang Second, Industrial Zone, Gushu 2nd Road,
Bao'an, Shenzhen, China

March 25, 2015 File on Federal Communication Commission
Registration Number: 203110

July 18, 2014 Certificated by IC
Registration Number: 12135A

2 EMC Equipment List

Equipment	Manufacture	Model No.	Serial No.	Last cal. Due to	Cal Interval
3m Semi-Anechoic	CHENYU	N/A	N/A	2018.01.18	2Year
Spectrum analyzer	Agilent	E4407B	MY46185649	2017.01.16	1Year
Receiver	R&S	ESPI	101873	2017.01.16	1Year
Receiver	R&S	ESCI	101165	2017.01.16	1Year
Bilog Antenna	SCHWARZBECK	VULB 9168	VULB9168-438	2018.01.18	2Year
Horn Antenna	SCHWARZBECK	BBHA 9120 D	BBHA 9120 D(1201)	2017.01.20	2Year
Cable	Resenberger	N/A	No.1	2017.01.16	1Year
Cable	SCHWARZBECK	N/A	No.2	2017.01.16	1Year
Cable	SCHWARZBECK	N/A	No.3	2017.01.16	1Year
Pre-amplifier	HP	HP8347A	2834A00455	2017.01.18	1Year
Pre-amplifier	Agilent	8449B	3008A02664	2017.01.18	1Year
vector Signal Generator	Agilent	N5182A	MY49060042	2016.11.16	1 Year
vector Signal Generator	Agilent	E4438C	US44271917	2016.11.16	1 Year
X-series USB Peak and Average Power Sensor	Agilent	U2021XA	MY54080020	2016.11.16	1 Year

X-series USB Peak and Average Power Sensor	Agilent	U2021XA	MY54110001	2016.11.16	1 Year
Signal Analyzer	Agilent	N9020A	MY48030494	2016.11.16	1 Year

3 Test Procedure

POWER LINE CONDUCTED INTERFERENCE: The test procedure used was ANSI Standard ANSI C63.4:2014 using a 50 u H LISN. Both Lines were observed. The bandwidth of the receiver was 10kHz with an appropriate sweep speed. The ambient temperature of the EUT was 25°C with a humidity of 58%.

RADIATION INTERFERENCE: The test procedure used was ANSI Standard ANSI C63.4:2014 using a ANRITSU spectrum analyzer with a pre-selector. The analyzer was calibrated in dB above a micro volt at the output of the antenna. The resolution bandwidth was 100kHz and the video bandwidth was 300 kHz up to 1 GHz and 1 MHz with a video BW of 3MHz above 1 GHz. The ambient temperature of the EUT was 25°C with a humidity of 58%.

FORMULA OF CONVERSION FACTORS: The Field Strength at 3m was established by adding the meter reading of the spectrum analyzer (which is set to read in units of dBuV) to the antenna correction factor supplied by the antenna manufacturer and cable loss. The antenna correction factors and cable loss are stated in terms of dB. The gain of the Pre-selector was accounted for in the Spectrum Analyzer Meter Reading.

Example:

Freq (MHz) METER READING + ACF + CABLE = FS

33.20 dBuV + 10.36 dB + 0.9 dB= 44.46 dBuV/m @ 3m

ANSI STANDARD ANSI C63.4:2014 10.1.7 MEASUREMENT PROCEDURES: The EUT was placed on a table 80 cm high and with dimensions of 1m by 1.5m. The EUT was placed in the center of the table (1.5m side). The table used for radiated measurements is capable of continuous rotation. When an emission was found, the table was rotated to produce the maximum signal strength. At this point, the antenna was raised and lowered from 1m to 4m. The antenna was placed in both the horizontal and vertical planes. The situation was similar for the conducted measurement except that the table did not rotate. The EUT was setup as described in ANSI Standard ANSI C63.4:2014 10.1.7 with the EUT 40 cm from the vertical ground wall.

4 Summary of Measurement

4.1 Summary of test result

Test Item	Test Requirement	Standards Paragraph	Result
Spurious Emission	FCC PART 15:2015	Section 15.247	Compliance
Conduction Emission	FCC PART 15:2015	Section 15.207	Compliance
Bandwidth Test	FCC PART 15:2015	Section 15.247	Compliance
Peak Power	FCC PART 15:2015	Section 15.247	Compliance
Power Density	FCC PART 15:2015	Section 15.247	Compliance
Band Edge	FCC PART 15:2015	Section 15.247	Compliance
Antenna Requirement	FCC PART 15:2015	Section 15.203	Compliance

Note: The EUT has been tested as an independent unit. And Continual Transmitting in maximum power.

4.2 Test connection

EUT

4.3 Assistant equipment used for test

Description	:	Notebook
Manufacturer	:	ACER
Model No.	:	ZQT
Remark: FCC DOC approved		

4.4 Test mode

Dutycycle :100%			
Keeping TX			
Mode	data rate (Mbps)(see Note)	Channel	Frequency (MHz)
GFSK	1	Low :CH1	2402
	1	Middle: CH19	2440
	1	High: CH39	2480
Note: According exploratory test, EUT will have maximum output power in those data rate. so those data rate were used for all test.			

4.5 Test Conditions

Temperature range	21-25°C
Humidity range	40-75%
Pressure range	86-106kPa

4.6 Measurement Uncertainty (95% confidence levels, k=2)

Item	MU	Remark
Uncertainty for Power point Conducted Emissions Test	2.42dB	
Uncertainty for Radiation Emission test in 3m chamber (below 30MHz)	2.13 dB	Polarize: V
	2.57dB	Polarize: H
Uncertainty for Radiation Emission test in 3m chamber (30MHz to 1GHz)	3.54dB	Polarize: V
	4.1dB	Polarize: H
Uncertainty for Radiation Emission test in 3m chamber (1GHz to 25GHz)	2.08dB	Polarize: H
	2.56dB	Polarize: V
Uncertainty for radio frequency	1×10^{-9}	
Uncertainty for conducted RF Power	0.65dB	
Uncertainty for temperature	0.2°C	
Uncertainty for humidity	1%	
Uncertainty for DC and low frequency voltages	0.06%	

5 Spurious Emission

5.1 Radiation Emission

5.1.1 Radiation Emission Limits(15.209)

Frequencies (MHz)	Field Strength (microvolt/meter)	Measurement Distance (meters)
0.009~0.490	2400/F(KHz)	300
0.490~1.705	24000/F(KHz)	30
1.705~30.0	30	30
30~88	100	3
88~216	150	3
216~960	200	3
Above 960	500	3

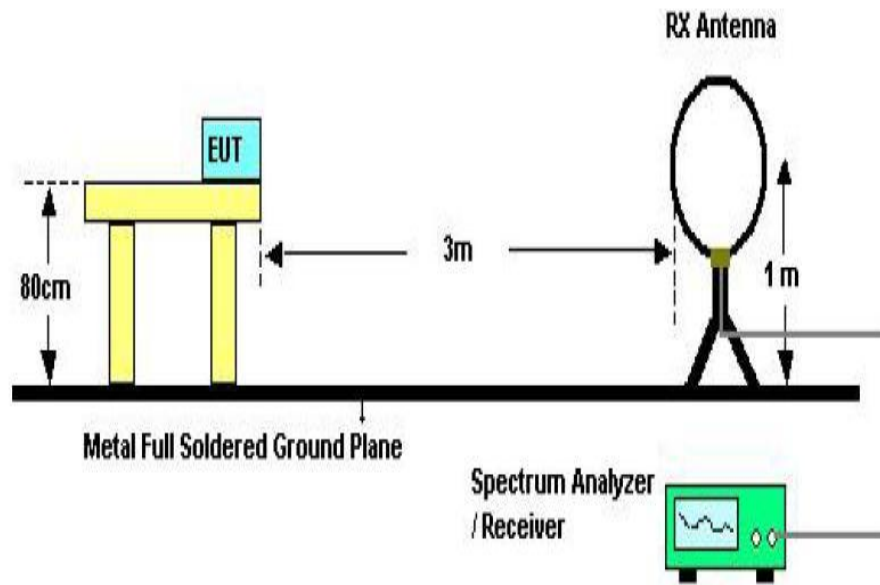
Harmonic emissions limits comply with below 54 dBuV/m at 3m. Other emissions radiated outside of the specified frequency bands, except for harmonics, shall be attenuated by at least 50 dB below the level of the fundamental or comply with the radiated emissions limits specified in section 15.209(a) limit in the table below has to be followed.

NOTE:

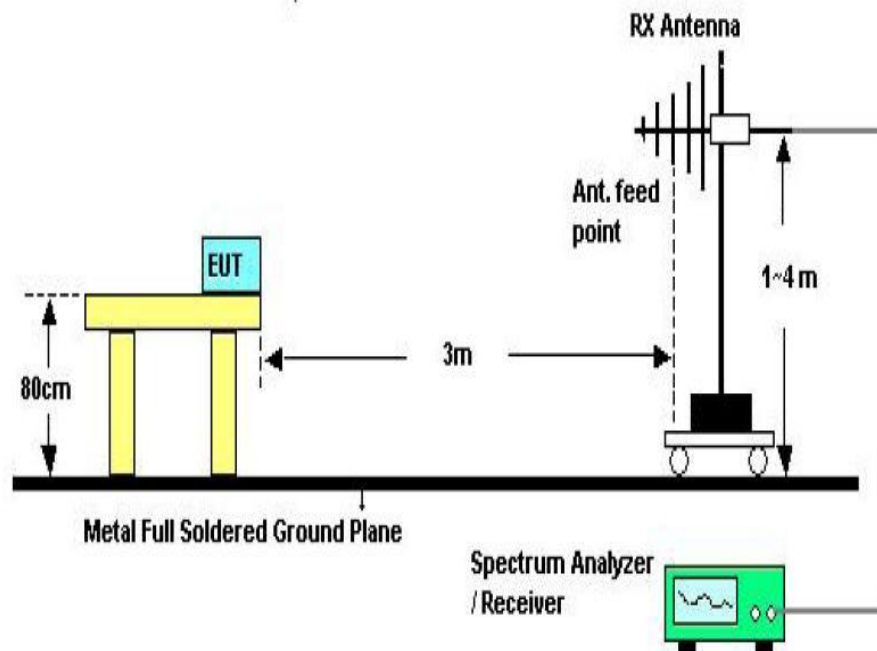
- a) The tighter limit applies at the band edges.
- b) $\text{Emission Level(dB uV/m)} = 20 \log \text{Emission Level(uv/m)}$

5.1.2 Test Setup

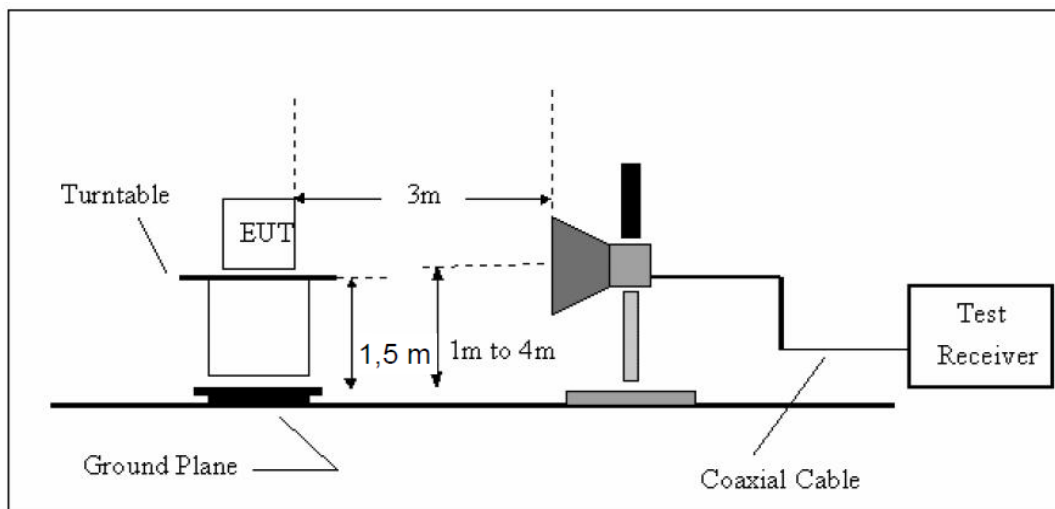
See the next page



Below 30MHz Test Setup



Above 30MHz Test Setup



Above 1GHz Test Setup

5.1.3 Test Procedure

- The measuring distance of 3m shall be used for measurements at frequency up to 1GHz and above 1GHz, The EUT was placed on a rotating 0.8 m high above ground for below 1GHz and 1.5m high for above 1GHz testing, The table was rotated 360 degrees to determine the position of the highest radiation
- The Test antenna shall vary between 1m and 4m, Both Horizontal and Vertical antenna are set of make measurement.
- The initial step in collecting conducted emission data is a spectrum analyzer Peak detector mode pre-scanning the measurement frequency range. Significant Peaks are then marked. and then Qusia Peak Detector mode premeasured
- If Peak value comply with QP limit Below 1GHz. The EUT deemed to comply with QP limit. But the Peak value and average value both need to comply with applicable limit above 1GHz.
- For the actual test configuration, please see the test setup photo.

5.1.4 Test Equipment Setting For emission test Result

9KHz~150KHz	RBW 200Hz	VBW 1KHz
150KHz~30MHz	RBW 9KHz	VBW 30KHz
30MHz~1GHz	RBW 120KHz	VBW 300KHz

Above 1GHz

RBW 1MHz

VBW 3MHz

5.1.5 Test Condition

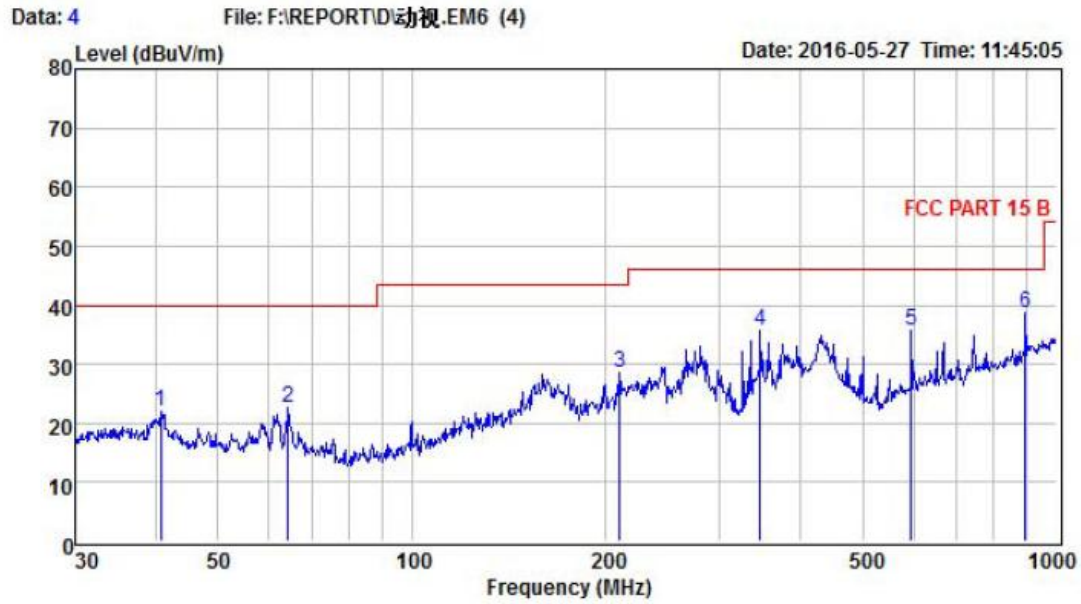
Continual Transmitting in maximum power.

5.1.6 Test Result

We have scanned the 9KHz from 25GHz to the EUT.
Detailed information please see the following page.

From 9KHz to 30MHz: Conclusion: PASS

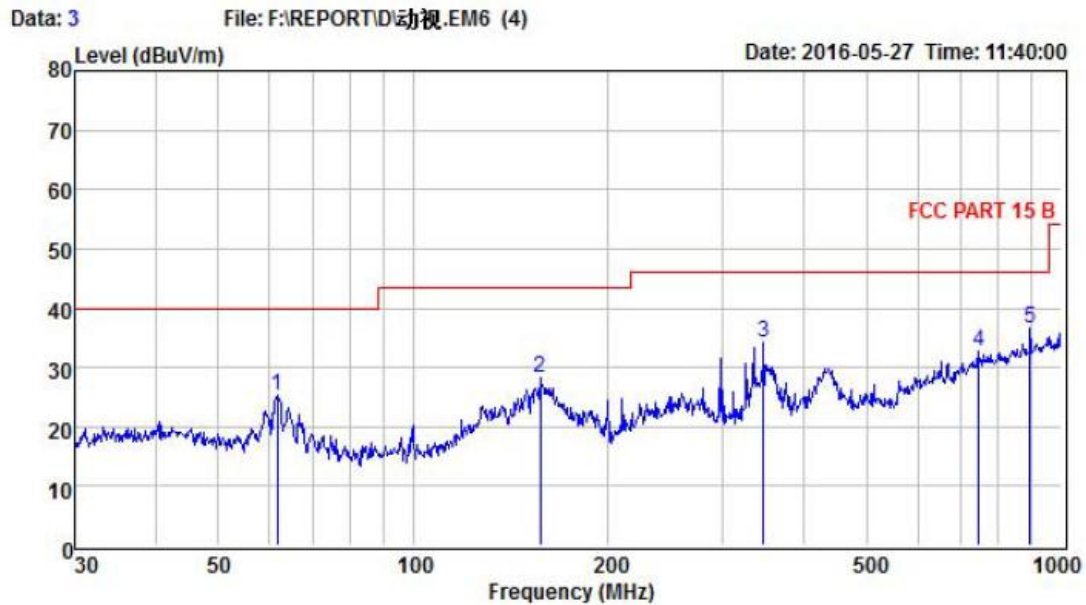
Note: The amplitude of spurious emissions which are attenuated by more than 20dB below the permissible value has no need to be reported.



Condition : FCC PART 15 B POL: HORIZONTAL
 EUT :
 Model No : WICA
 Test Mode : BT 4.0
 Power :
 Test Engineer :
 Remark :
 Temp : 24.2 °C
 Hum : 54 %

Item	Freq MHz	Read Level dBuV	Antenna Factor dB	Preamp Factor dB	Cable Loss dB	Level dBuV	Limit dBuV	Margin dBuV	Remark
1	40.70	38.73	14.07	30.85	0.18	22.13	40.00	-17.87	Peak
2	64.21	40.83	11.98	30.52	0.24	22.53	40.00	-17.47	Peak
3	210.05	46.39	10.07	28.51	0.62	28.57	43.50	-14.93	Peak
4	346.81	49.02	13.77	27.81	0.69	35.67	46.00	-10.33	Peak
5	595.13	42.77	18.20	26.00	0.85	35.82	46.00	-10.18	Peak
6	893.86	40.95	21.56	25.09	1.19	38.61	46.00	-7.39	Peak

Remark: Level = Read Level + Antenna Factor - Preamp Factor + Cable Loss



Condition : FCC PART 15 B POL: VERTICAL
 EUT :
 Model No : WICA
 Test Mode : BT 4.0
 Power :
 Test Engineer :
 Remark :
 Temp : 24.2 °C
 Hum : 54 %

Item	Freq MHz	Read Level dBuV	Antenna Factor dB	Preamp Factor dB	Cable Loss dB	Level dBuV	Limit dBuV	Margin dBuV	Remark
1	61.56	43.38	12.36	30.72	0.19	25.21	40.00	-14.79	Peak
2	157.01	42.96	14.15	29.24	0.38	28.25	43.50	-15.25	Peak
3	346.81	47.67	13.77	27.81	0.69	34.32	46.00	-11.68	Peak
4	744.87	36.91	20.20	25.38	0.98	32.71	46.00	-13.29	Peak
5	893.86	38.78	21.56	25.09	1.19	36.44	46.00	-9.56	Peak

Remark: Level = Read Level + Antenna Factor - Preamp Factor + Cable Loss

Above 1GHz

1GHz—25GHz Radiated emission Test result									
EUT: WICA Personal Trainer					M/N: WICA				
Power: DC 7.4V from battery									
Test date: 2016-05-27 Test site: 3m Chamber Tested by: Store Chu									
Test mode: GFSK Tx CH1 2402MHz									
Antenna polarity: Vertical									
No	Freq (MHz)	Read Level (dBuV/m)	Antenna Factor (dB/m)	Cable loss(dB)	Amp Factor (dB)	Result (dBuV/m)	Limit (dBuV/m)	Margin (dB)	Remark
1	4804	40.61	33.95	10.18	34.26	50.48	74	23.52	PK
2	4804	32.22	33.95	10.18	34.26	42.09	54	11.91	AV
3	7206	/							
4	9608	/							
5	12010	/							
Antenna Polarity: Horizontal									
1	4804	40.2	33.95	10.18	34.26	50.07	74	23.93	PK
2	4804	31.58	33.95	10.18	34.26	41.45	54	12.55	AV
3	7206	/							
4	9608	/							
5	12010	/							
Note:									
1,Measuring frequency from 1GHz to 25GHz									
2,Spectrum Set for PK measure: RBW=1MHz, VBW=1MHz, Sweep time=Auto, Detector: PK									
2,Spectrum Set for AV measure: RBW=1MHz, VBW=3MHz, Sweep time=Auto, Detector: RMS									
3, Result = Read level + Antenna factor + cable loss-Amp factor									
4, All the other emissions not reported were too low to read and deemed to comply with FCC limit.									

1GHz—25GHz Radiated emissison Test result									
EUT: WICA Personal Trainer					M/N: WICA				
Power: DC 7.4V from battery									
Test date: 2016-05-27			Test site: 3m Chamber			Tested by: Store Chu			
Test mode: GFSK Tx CH20 2440MHz									
Antenna polarity: Vertical									
No	Freq (MHz)	Read Level (dBuV/m)	Antenna Factor (dB/m)	Cable loss(dB)	Amp Factor (dB)	Result (dBuV/m)	Limit (dBuV/m)	Margin (dB)	Remark
1	4880	41.94	33.93	10.2	34.29	51.78	74	22.22	PK
2	4880	32.12	33.93	10.2	34.29	41.96	54	12.04	AV
3	7320	/							
4	9760	/							
5	12200	/							
Antenna Polarity: Horizontal									
1	4880	41.64	33.93	10.2	34.29	51.48	74	22.52	PK
2	4880	33.11	33.93	10.2	34.29	42.95	54	11.05	AV
3	7320	/							
4	9760	/							
5	12200	/							
Note:									
1, Measuring frequency from 1GHz to 25GHz									
2,Spectrum Set for PK measure: RBW=1MHz, VBW=1MHz, Sweep time=Auto, Detector: PK									
2,Spectrum Set for AV measure: RBW=1MHz, VBW=3MHz, Sweep time=Auto, Detector: RMS									
3, Result = Read level + Antenna factor + cable loss-Amp factor									
4, All the other emissions not reported were too low to read and deemed to comply with FCC limit.									

1GHz—25GHz Radiated emission Test result									
EUT: WICA Personal Trainer			M/N: WICA						
Power: DC 7.4V from battery									
Test date: 2016-05-27			Test site: 3m Chamber			Tested by: Store Chu			
Test mode: GFSK Tx CH40 2480MHz									
Antenna polarity: Vertical									
No	Freq (MHz)	Read Level (dBuV/m)	Antenna Factor (dB/m)	Cable loss (dB)	Amp Factor (dB)	Result (dBuV/m)	Limit (dBuV/m)	Margin (dB)	Remark
1	4960	42.7	33.98	10.22	34.25	52.65	74	21.35	PK
2	4960	33.21	33.98	10.22	34.25	43.16	54	10.84	AV
3	7440	/							
4	9920	/							
5	12400	/							
Antenna Polarity: Horizontal									
1	4960	43.23	33.98	10.22	34.25	53.18	74	20.82	PK
2	4960	32.9	33.98	10.22	34.25	42.85	54	11.15	AV
3	7440	/							
4	9920	/							
5	12400	/							
Note:									
1, Measuring frequency from 1GHz to 25GHz									
2, Spectrum Set for PK measure: RBW=1MHz, VBW=1MHz, Sweep time=Auto, Detector PK									
2,Spectrum Set for AV measure: RBW=1MHz, VBW=3MHz, Sweep time=Auto, Detector RMS									
3, Result = Read level + Antenna factor + cable loss-Amp factor									
4, All the other emissions not reported were too low to read and deemed to comply with FCC limit.									

6 POWER LINE CONDUCTED EMISSION

6.1 Conducted Emission Limits(15.207)

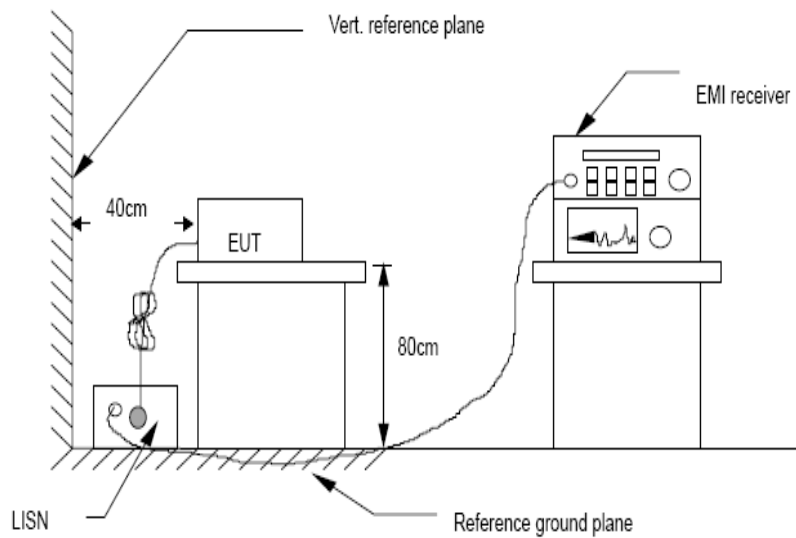
Frequency MHz	Limits dB(μ V)	
	Quasi-peak Level	Average Level
0.15 -0.50	66 -56*	56 - 46*
0.50 -5.00	56	46
5.00 -30.00	60	50

Notes: 1. *Decreasing linearly with logarithm of frequency.

2. The lower limit shall apply at the transition frequencies.

3.The limit decreases in line with the logarithm of the frequency in the rang of 0.15 to 0.50 MHz.

6.2 Test Setup



6.3 Test Procedure

The EUT is put on the plane 0.8m high above the ground by insulating support and is connected to the power mains through a line impedance stabilization network (L.I.S.N.). This provides a 50ohm coupling impedance for the EUT system. Please refer the block diagram of the test setup and photographs. Both sides of AC lines are checked to find out the maximum conducted emission. In order to find the maximum emission levels, the relative positions of equipment and all of the interface cables shall be changed according to ANSI C63.4:2014 on Conducted Emission Measurement. The bandwidth of test receiver (R & S ESCI) is set at 9 kHz.

6.4 Test Results

TX MODE

Worse case is reported only

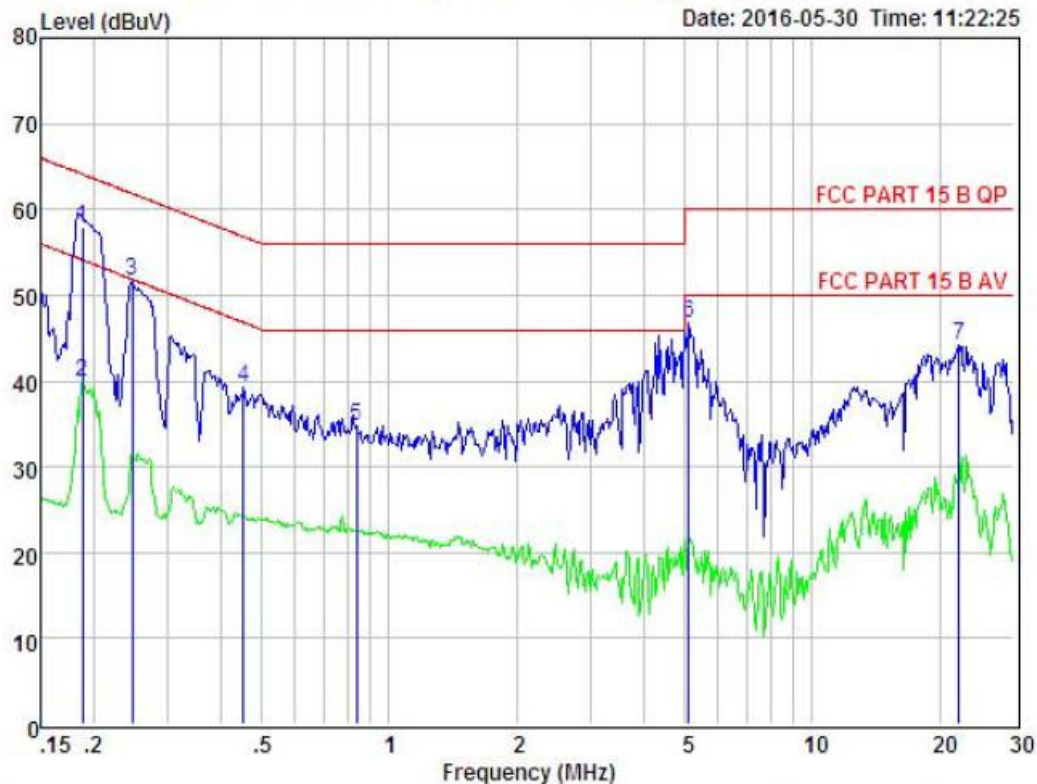
PASS

Detailed information please see the following page.

Data: 3

File: E:\TEST REPORT\SI\Sportmoo\WICA.EM6 (8)

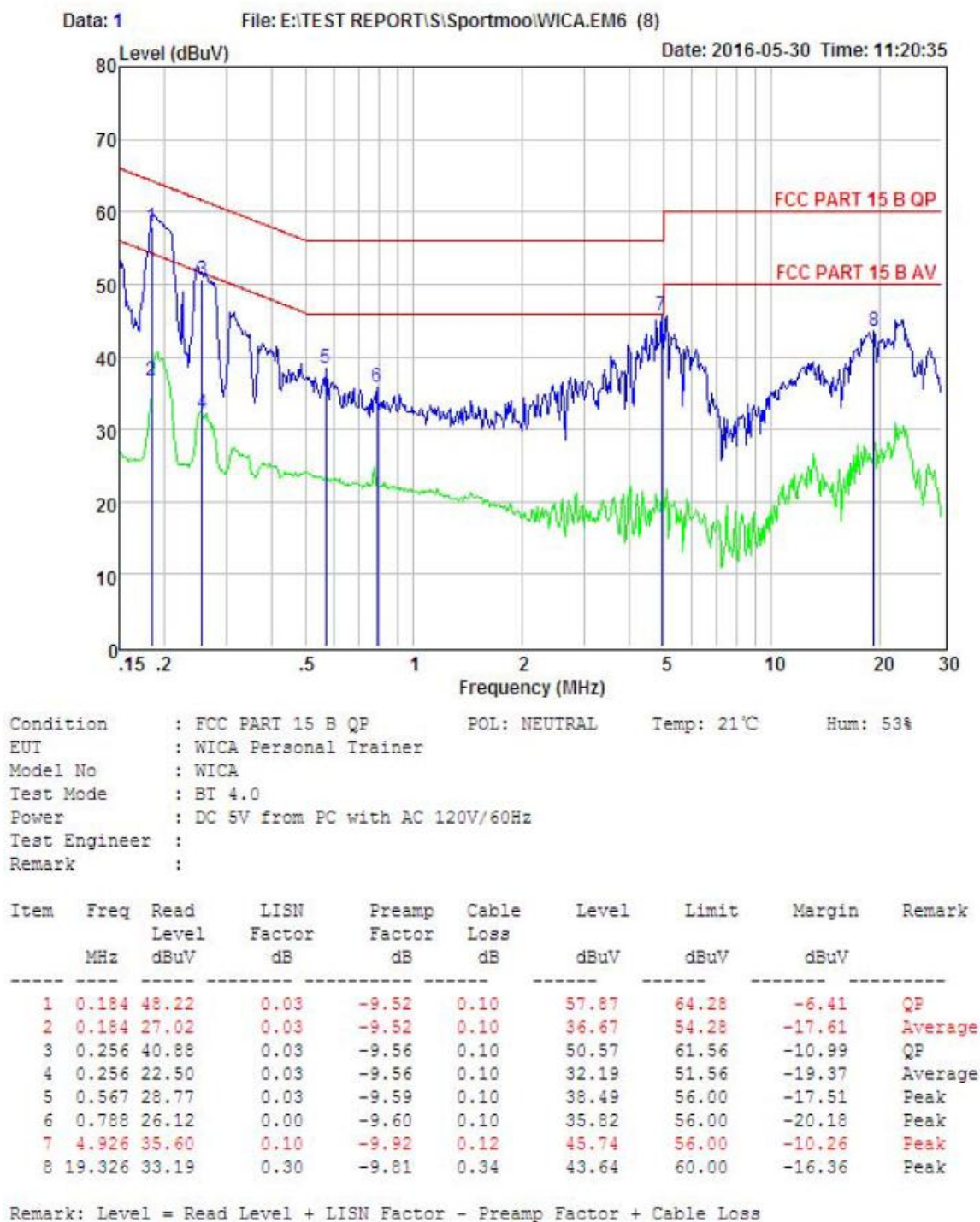
Date: 2016-05-30 Time: 11:22:25



Condition : FCC PART 15 B QP POL: LINE Temp: 21°C Hum: 53%
 EUT : WICA Personal Trainer
 Model No : WICA
 Test Mode : BT 4.0
 Power : DC 5V from PC with AC 120V/60Hz
 Test Engineer :
 Remark

Item	Freq MHz	Read Level dBuV	LISN Factor dB	Preamp Factor dB	Cable Loss dB	Level dBuV	Limit dBuV	Margin dBuV	Remark
1	0.188	48.34	0.03	-9.52	0.10	57.99	64.11	-6.12	QP
2	0.188	30.25	0.03	-9.52	0.10	39.90	54.11	-14.21	Average
3	0.247	41.94	0.03	-9.52	0.10	51.59	61.86	-10.27	Peak
4	0.452	29.50	0.03	-9.58	0.10	39.21	56.85	-17.64	Peak
5	0.839	25.10	0.04	-9.60	0.10	34.84	56.00	-21.16	Peak
6	5.112	36.57	0.10	-9.93	0.12	46.72	60.00	-13.28	Peak
7	22.298	33.66	0.40	-9.81	0.40	44.27	60.00	-15.73	Peak

Remark: Level = Read Level + LISN Factor - Preamp Factor + Cable Loss



7 Conducted Maximum Output Power

7.1 Test limit

Please refer section 15.247.

7.2 Test Procedure

Details see the KDB558074 Meas Guidance V03

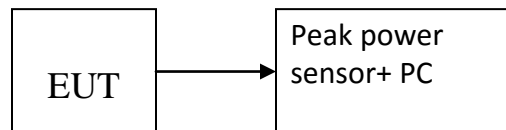
7.2.1 Place the EUT on the table and set it in transmitting mode.

7.2.2 Measure out each mode and each bands peak output power of EUT.

Note: The cable loss and attenuator loss were offset into measure device as amplitude offset.

Details see the KDB558074 DTS Meas Guidance V03

7.3 Test Setup



7.4 Test Results

PASS

Detailed information please see the following page.

EUT: WICA Personal Trainer		M/N: WICA		
Test date: 2016-05-27		Test site: RF site		Tested by: Eric Huang
Mode	Frequency (MHz)	PK Output power(dBm)	Limit (dBm)	Judgment
GFSK	CH0: 2402	-3.773	30	Pass
	CH19: 2440	-4.186	30	Pass
	CH39: 2480	-3.028	30	Pass
Conclusion: PASS				

8 PEAK POWER SPECTRAL DENSITY

8.1 Test limit

8.1.1 Please refer section 15.247.

8.1.2 For direct sequence systems, the peak power spectral density conducted from the intentional radiator to the antenna shall not be greater than 8dBm in any 3kHz band during any time interval of continuous transmission.

8.1.3 The direct sequence operating of the hybrid system, with the frequency hopping operation turned off, shall comply with the power density requirements of paragraph (d) of this section.

8.2 Method of measurement

Details see the KDB558074 DTS Meas Guidance V03

8.2.1 Place the EUT on the table and set it in transmitting mode.

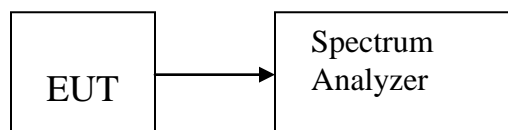
8.2.2 Remove the antenna from the EUT and then connect a low loss RF cable from the antenna port to the spectrum analyzer.

8.2.3 Set the spectrum analyzer as RBW = 3kHz, VBW = 10kHz, span=5-30%EBW, detail see the test plot.

8.2.4 Record the max reading.

8.2.5 Repeat the above procedure until the measurements for all frequencies are completed.

8.3 Test Setup



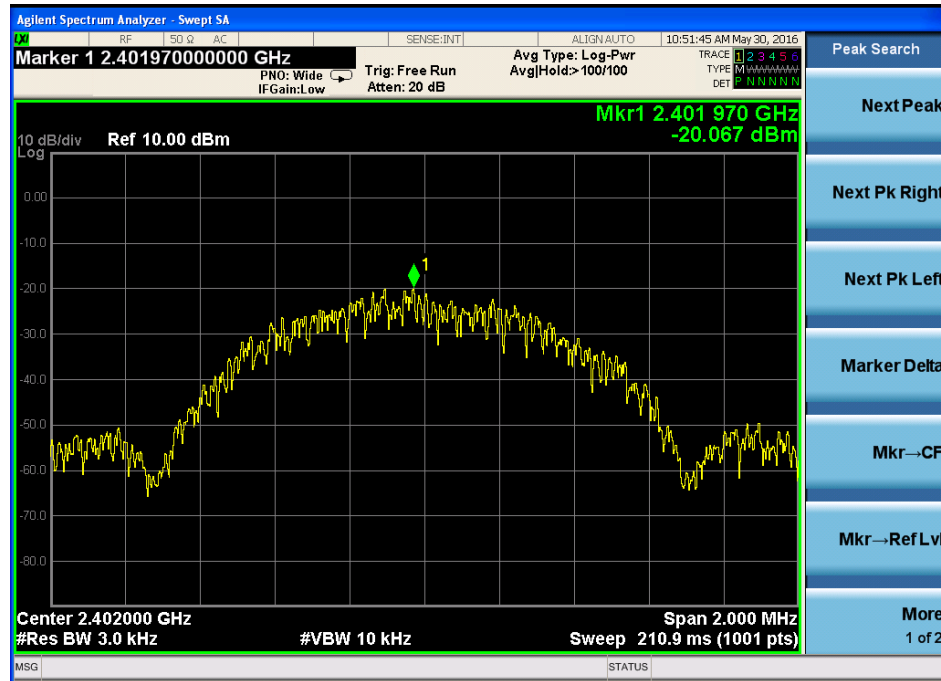
8.4 Test Results

PASS.

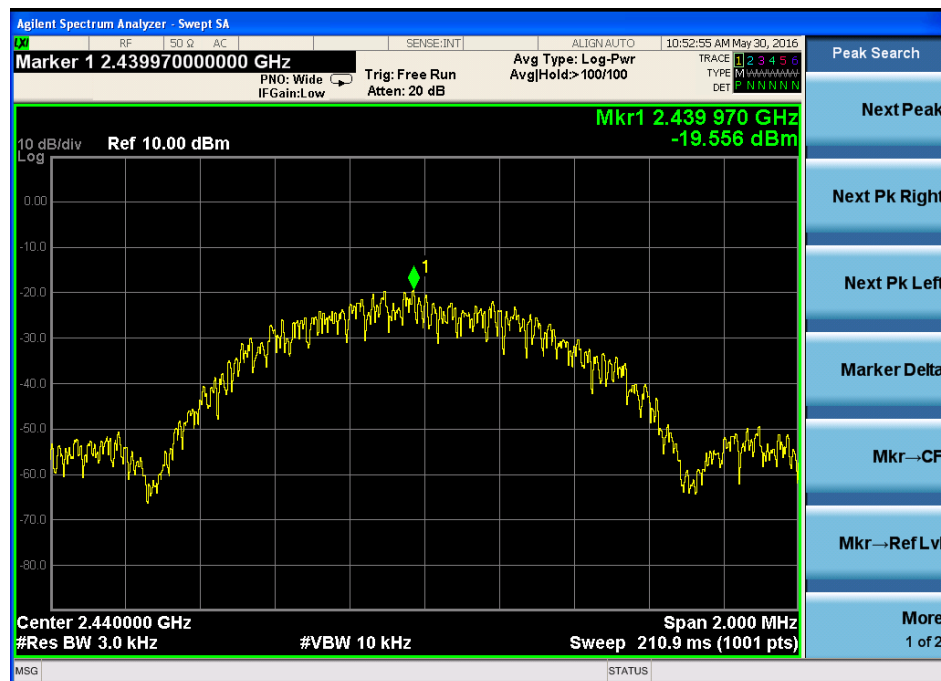
Detailed information please see the following page.

EUT: WICA Personal Trainer		M/N: WICA		
Test date: 2016-05-27		Test site: RF site		Tested by: Eric Huang
Mode	Frequency (MHz)	PK Output power(dBm)	Limit (dBm)	Result
GFSK	CH0: 2402	-20.067	8	PASS
	CH19: 2440	-19.556	8	PASS
	CH39: 2480	-19.216	8	PASS
Conclusion: PASS				

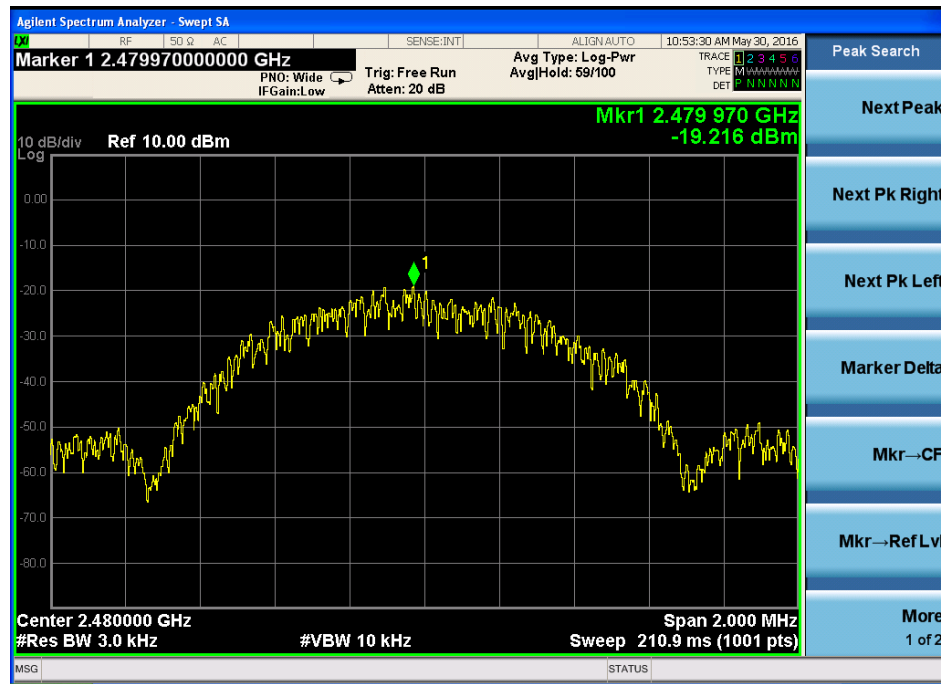
GFSK :
CH Low :



CH Mid:



CH Hig:



9 Bandwidth

9.1 Test limit

Please refer section 15.247

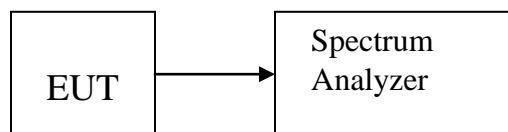
For direct sequence systems, the minimum 6dB bandwidth shall be at least 500 kHz.

9.2 Method of measurement

Details see the KDB558074 D01 Meas Guidance

- a) The bandwidth is measured at an amplitude level reduced 20dB from the reference level. The reference level is the level of the highest amplitude signal observed from the transmitter at the fundamental frequency. Once the reference level is established, the equipment is conditioned with typical modulating signal to produce the worst-case (i.e. the widest) bandwidth.
- b) The test receiver set $RBW = 1-5 \% EBW$, $VBW \geq 3RBW$, Sweep time set auto, detail see the test plot. **Peak detector is used.**

9.3 Test Setup



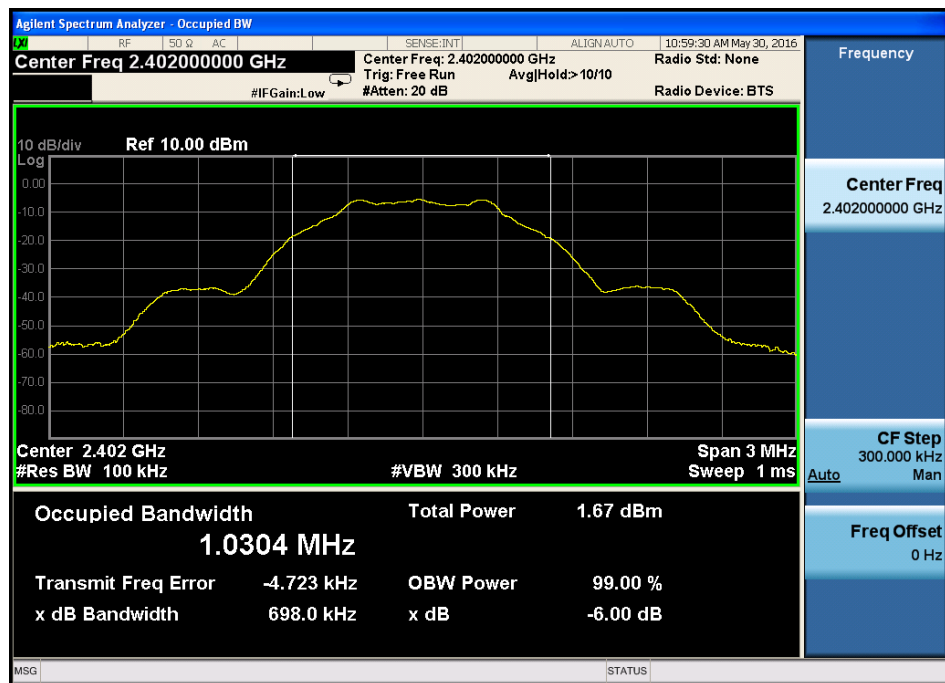
9.4 Test Results

PASS.

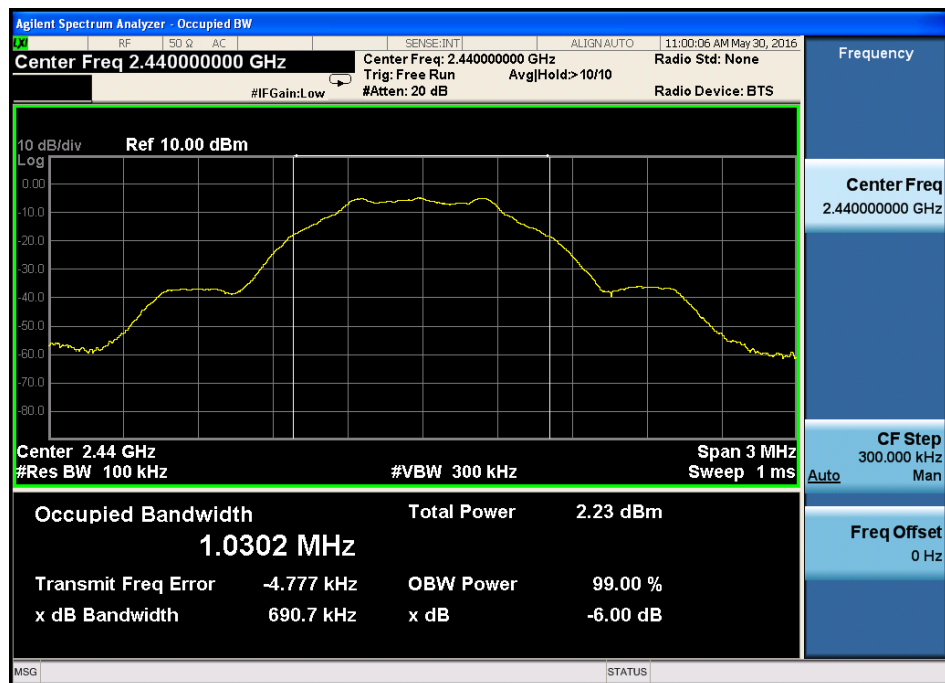
Detailed information please see the following page.

Channel	Frequency (MHz)	6dB Bandwidth (MHz)	99% Occupied Bandwidth (MHz)	Limit (MHz)	Result
GFSK:					
Low	2402	0.698	/	0.5	PASS
Mid	2440	0.691	/	0.5	PASS
High	2480	0.694	/	0.5	PASS

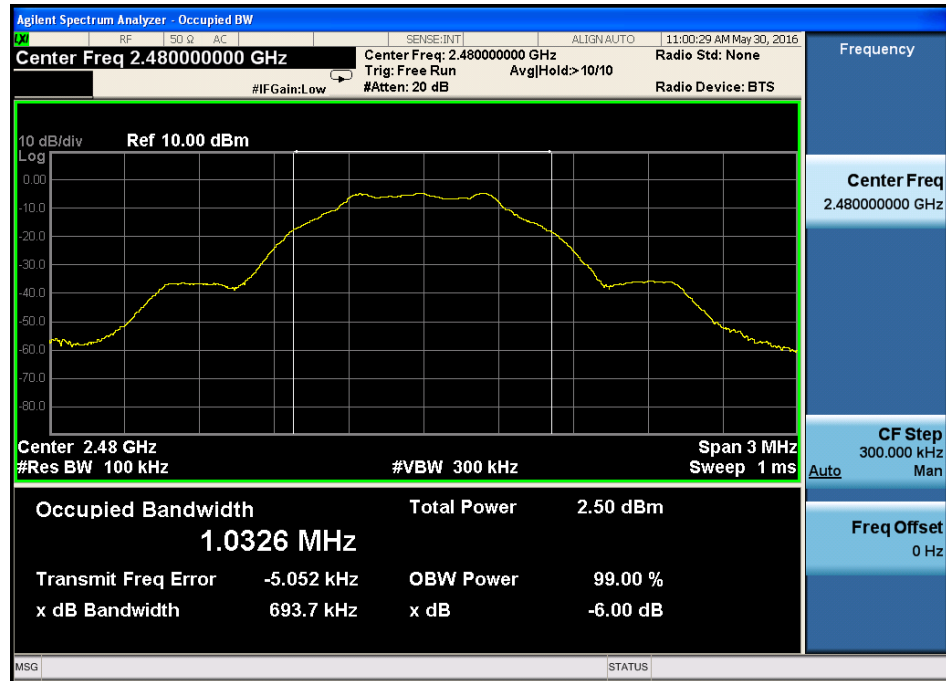
GFSK:
CH Low :



CH Mid :



CH High :



10 Band Edge Check

10.1 Test limit

Please refer section 15.247.

10.2 Test Procedure

12.2.1 Put the EUT on a 0.8m high table, power on the EUT. Emissions were scanned and measured rotating the EUT to 360 degrees, Find the maximum Emission

12.2.2 Check the spurious emissions out of band.

12.2.3 RBW 1MHz ,VBW 3MHz ,peak detector for peak value , RBW 1MHz ,VBW 3MHz ,RMS detector for AV value.

10.3 Test Setup

Same as 5.2.2.

10.4 Test Result

PASS.

Detailed information please see the following page.

Band Edge Test result								
EUT: WICA Personal Trainer					M/N: WICA			
Power: DC 7.4V from battery								
Test date: 2016-05-27			Test site: 3m Chamber		Tested by: Eric Huang			
Test mode: Tx Low								
Antenna polarity: Vertical								
Freq (MHz)	Read Level (dBuV/m)	Antenna Factor (dB/m)	Cable loss(dB)	Amp Factor (dB)	Result (dBuV/m)	Limit (dBuV/m)	Margin (dB)	Remark
2390	44.4	27.62	3.92	34.97	40.97	74	33.03	PK
2390	--	27.62	3.92	34.97	--	54	--	AV
Antenna Polarity: Horizontal								
2390	43.17	27.62	3.92	34.97	39.74	74	34.26	PK
2390	--	27.62	3.92	34.97	--	54	--	AV

Note:

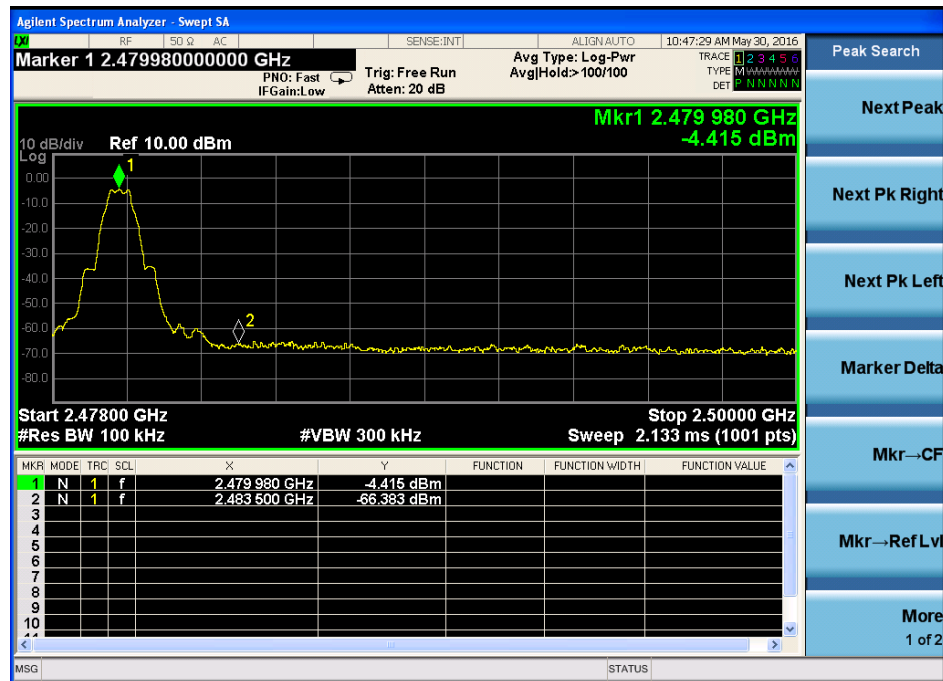
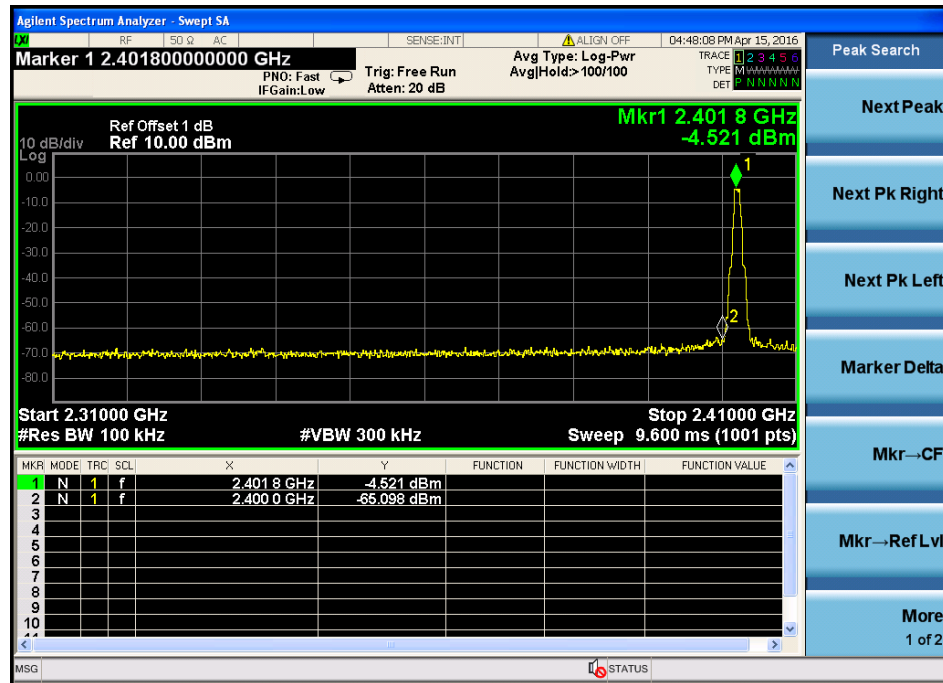
1, Spectrum Set for PK measure: RBW=1MHz, VBW=1MHz, Sweep time=Auto, Detector: PK

2, Spectrum Set for AV measure: RBW=1MHz, VBW=3MHz, Sweep time=Auto, Detector: RMS

3, Result = Read level + Antenna factor + cable loss-Amp factor

4, All the other emissions not reported were too low to read and deemed to comply with FCC limit.

Conducted Method:
GFSK



11 Antenna Requirement

11.1 Standard Requirement

An intentional radiator shall be designed to ensure that no antenna other than that furnished by the responsible party shall be used with the device. The use of a permanently attached antenna or of an antenna that uses a unique coupling to the intentional radiator shall be considered sufficient to comply with the provisions of this Section. The manufacturer may design the unit so that a broken antenna can be replaced by the user, but the use of a standard antenna jack or electrical connector is prohibited.

11.2 Antenna Connected Construction

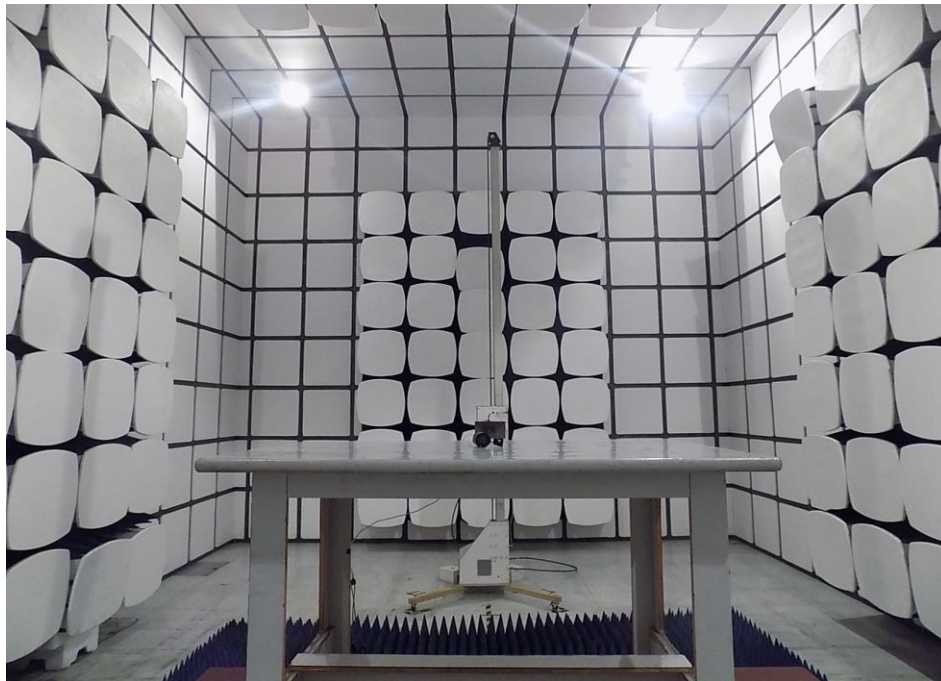
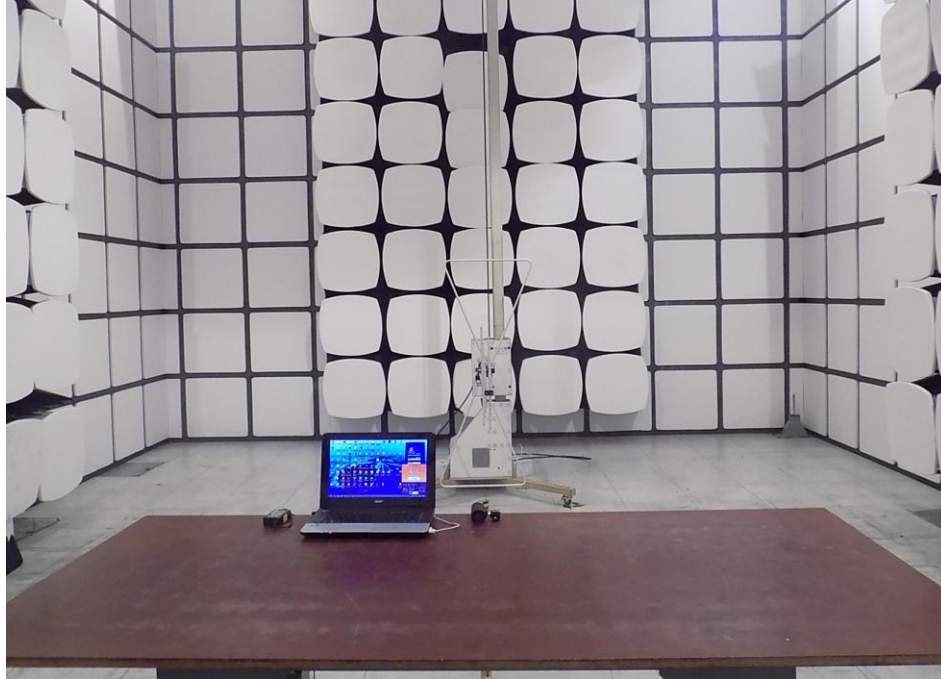
The antenna connector is unique antenna and no consideration of replacement. Please see EUT photo for details.

11.3 Result

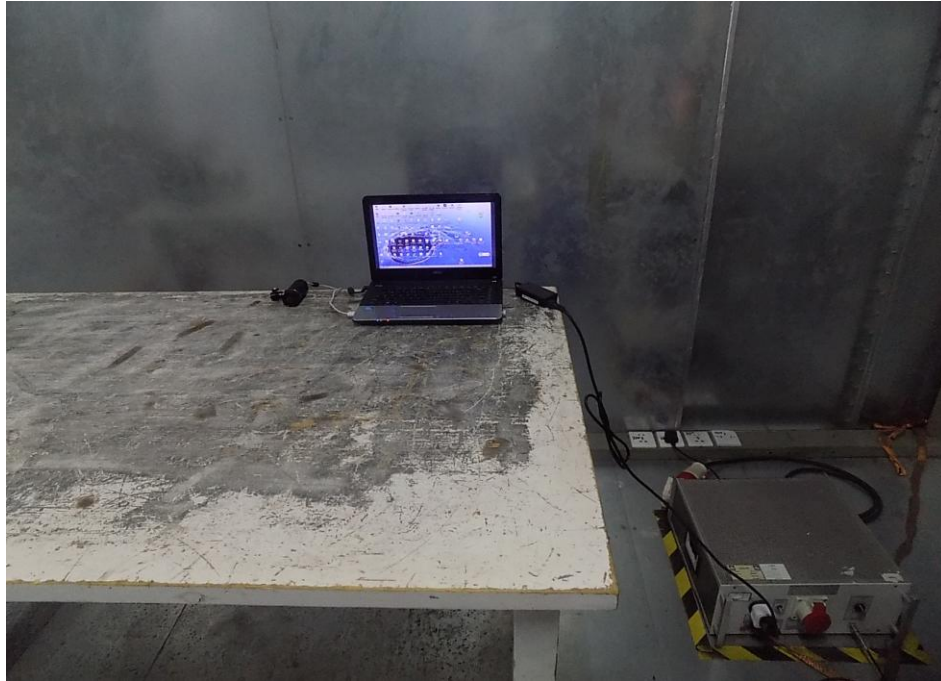
The EUT antenna is Integrated Antenna. It comply with the standard requirement.

12 Test setup photo

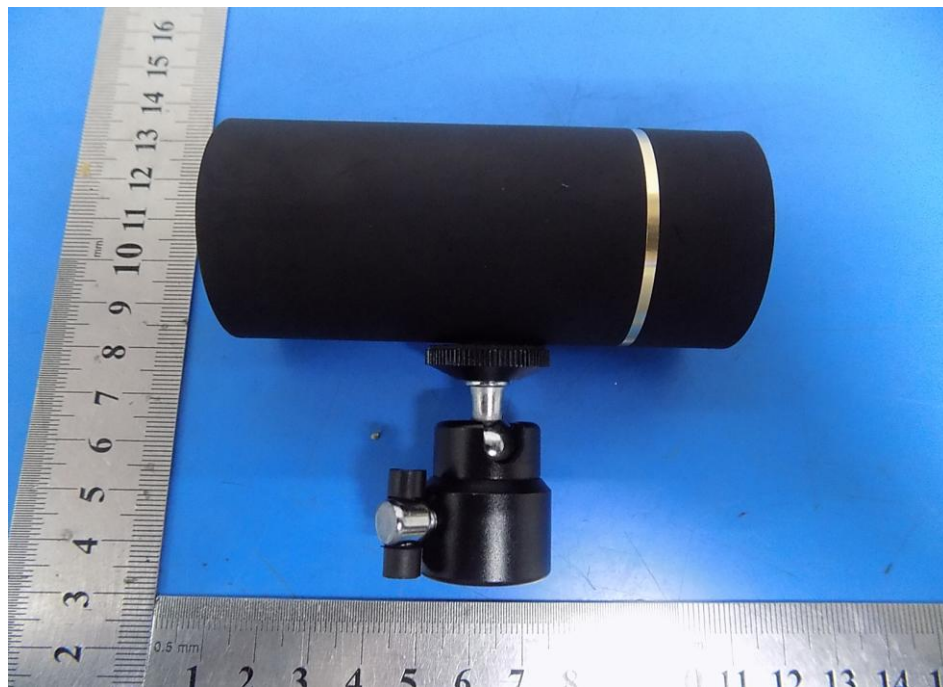
Photographs-Radiated Emission Test Setup in Chamber

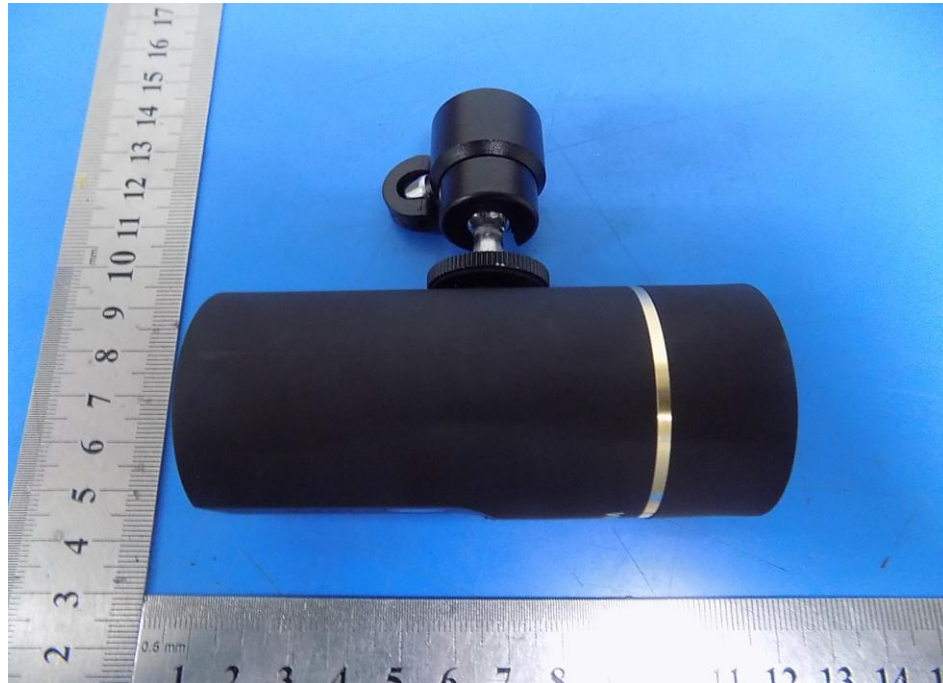


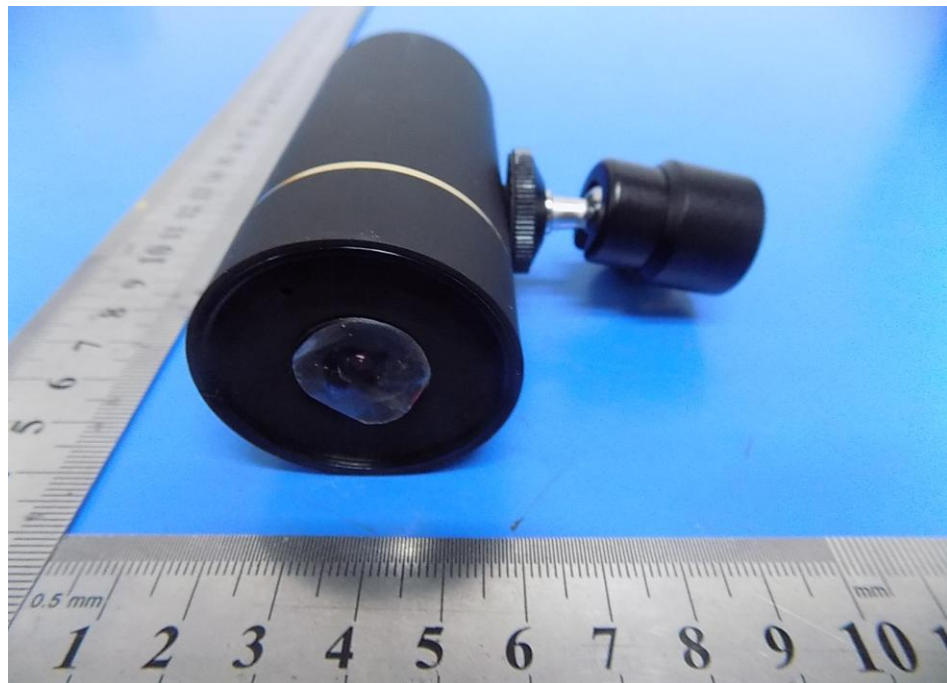
Photos of conducted emission

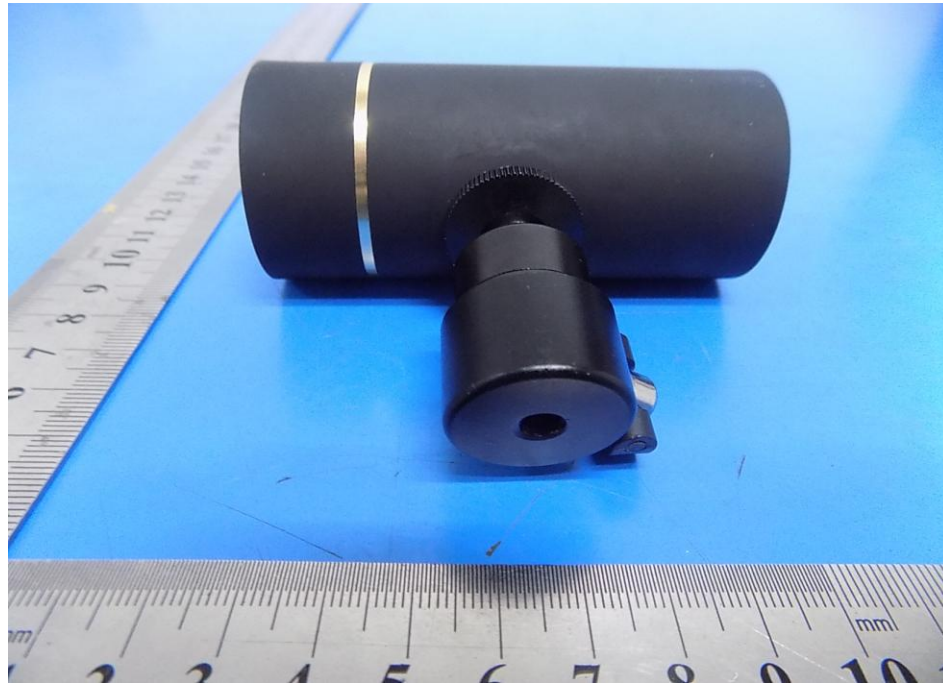


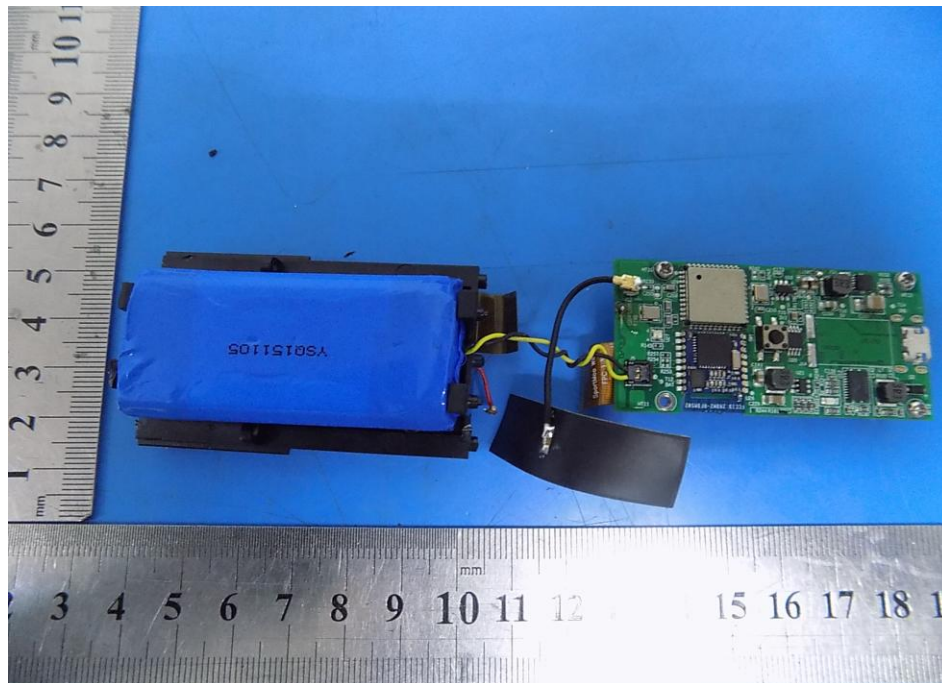
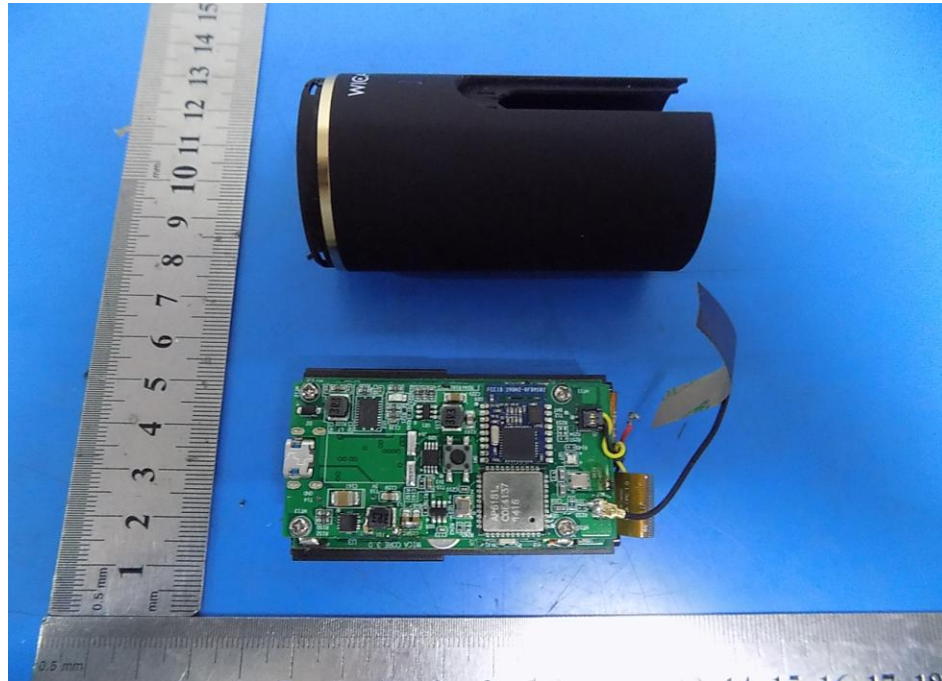
13 Photos of EUT

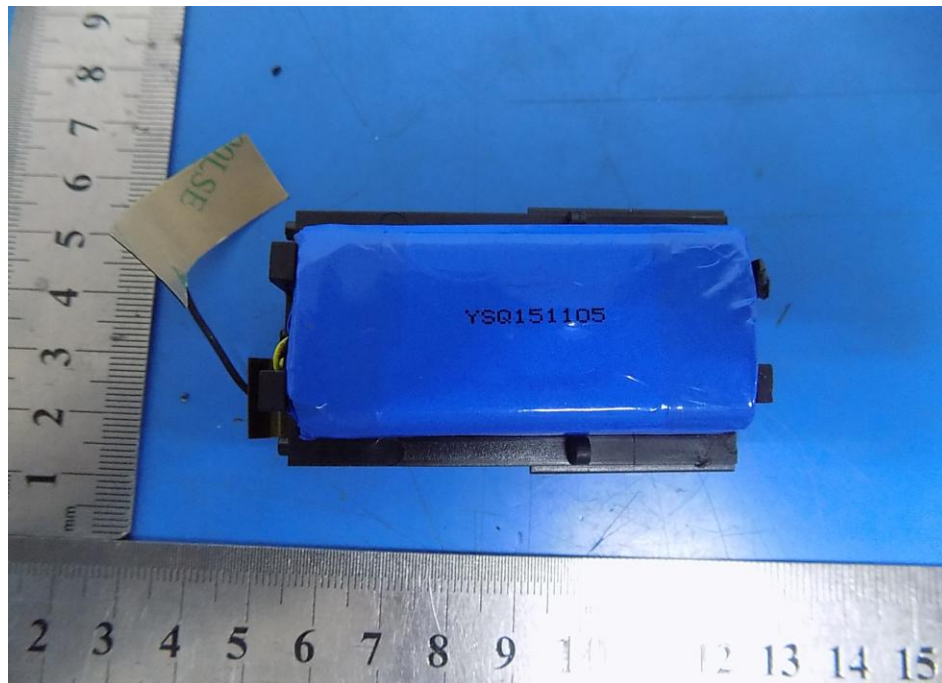
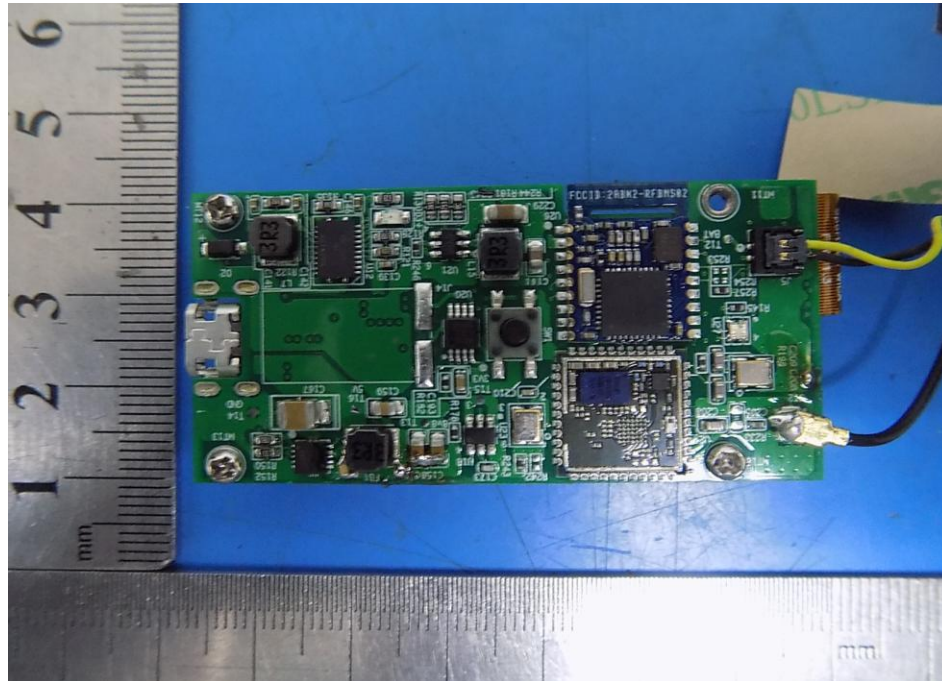


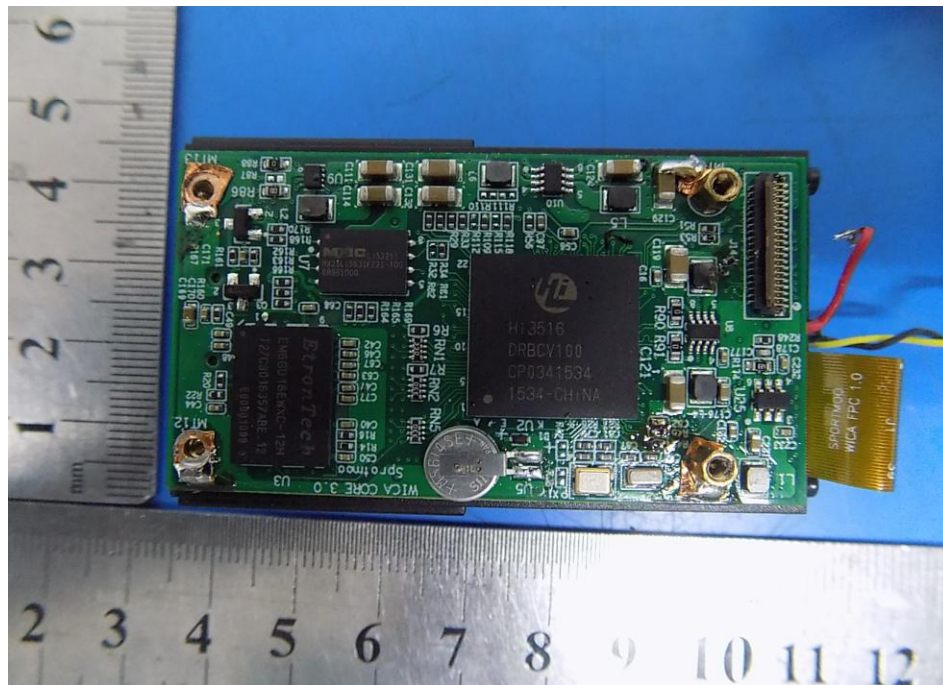
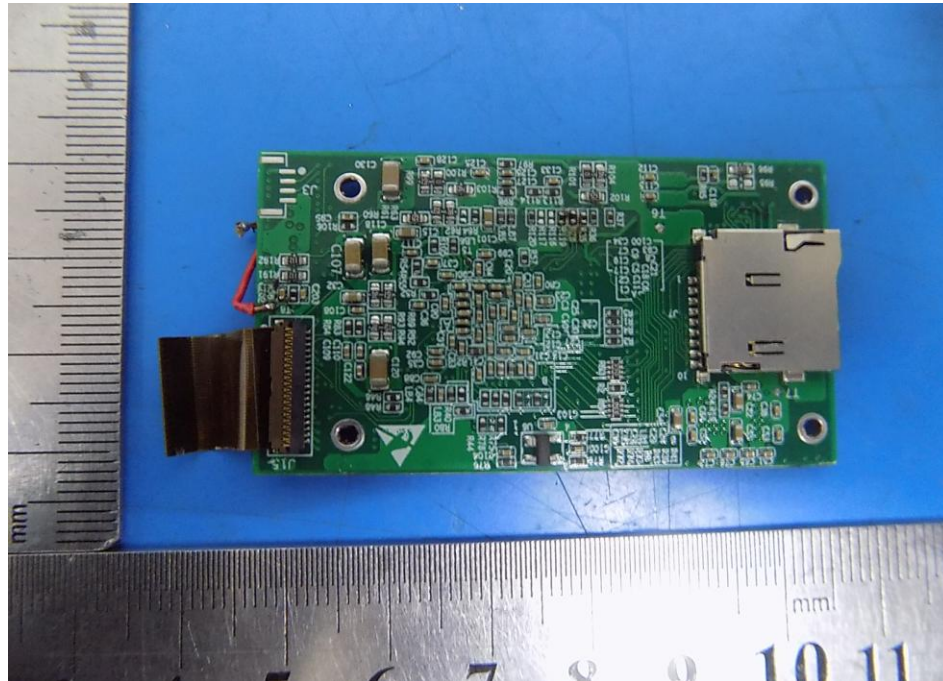


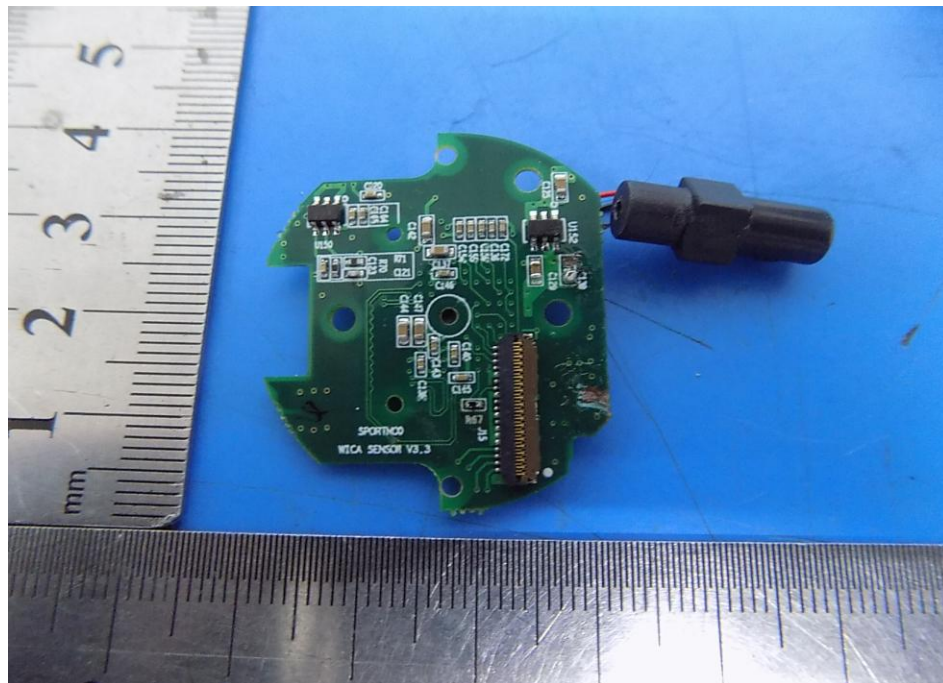
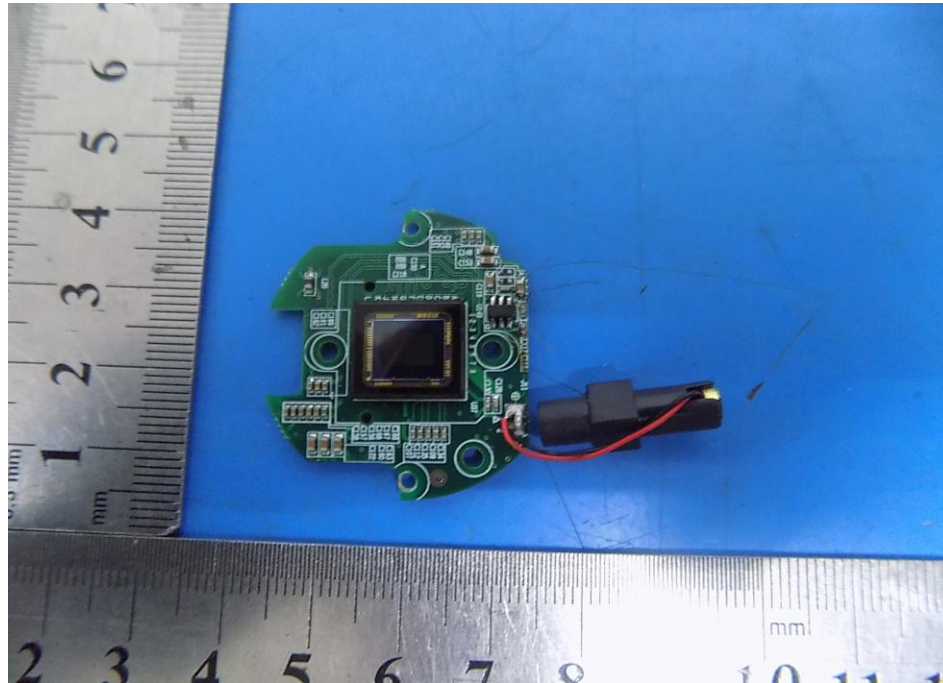












-----END OF THE REPORT-----