



User Manual

1.Precautions

⊗ **Forbidden!**

Never use with the following electronic medical equipment

- Pacemakers and other implanted medical devices.
- Cardiopulmonary bypass and other life-sustaining medical electronic equipment.
- ECGs and other similar medical electronic equipment.
- If high frequency (HF) surgical equipment and the RELEV are used on a patient at the same time, the electrode pad on the RELEV might cause burns, or may damage the equipment.
- If the RELEV is used near shortwave or microwave therapy equipment, the output of the RELEV may be unstable.

● **Warning!**

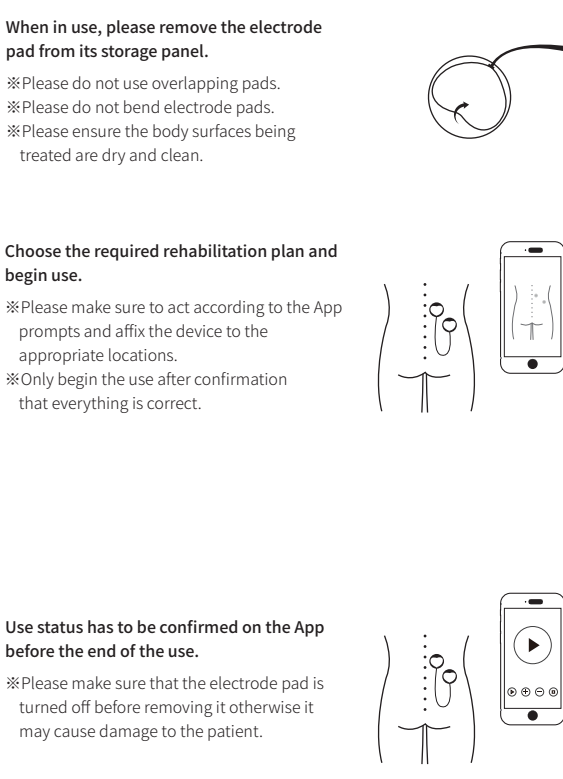
In the following situations, please consult a doctor before applying

- Patients with acute diseases
- Cancer
- Infectious diseases
- Pregnant women
- Heart disease
- High fever
- Abnormal blood pressure
- Skin sensory disorders or skin abnormalities
- Other patients who are receiving doctor's therapy or have abnormal feelings.
- Please do not place near the heart, on the neck, on the head, mouth or genitals or parts of the body with skin disorders or wounds.
- Please do not use it with other medical devices and any external body creams or applications including sprays or similar.
- Please do not use for purposes other than rehabilitation.
- Please do not disassemble, repair or modify the main body without authorization.

⚠ **Attention!**

- Please stop using it immediately if patient feels unwell because of the use of the device.
- During the use, if you would like to move the electrode pad to other parts of the body, please be sure to turn device off before moving it.
- During use, if you would like to transfer the electrode pad to other patients, please be sure to turn device off before moving it.
- Please do not carry out the use whilst wearing any other electronic devices.
- Please do not use on children or people who are unable to express awareness of what is happening.
- Please do not use in bathrooms, showers or places with high humidity.
- Please do not use it while patient is sleeping.
- Please do not leave electrode sticky pad attached to a body for a long time.
- During therapy, please make sure the electrode pad does not have contact with any metal elements such as belts, necklaces or other items.
- Please do not apply to the same site for a long time (over 30 minutes).

2. Product Components



3.Operating Methods

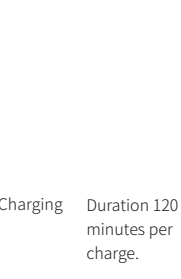
Put electrode pad in a horizontal position and connect it to the main host body clip.



Connect the device via Bluetooth on a mobile phone.

※Please make sure that battery is fully charged before connecting to RELEV, if the power is low; please charge it to full before connecting to RELEV.

※Please keep the mobile phone as close as possible to RELEV when connected.



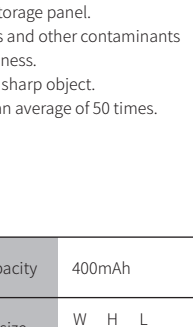
When in use, please remove the electrode pad from its storage panel.

- ※Please do not use overlapping pads.
- ※Please do not bend electrode pads.
- ※Please ensure the body surfaces being treated are dry and clean.



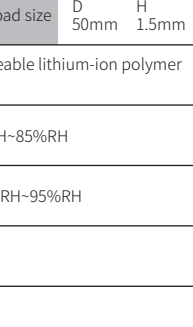
Choose the required rehabilitation plan and begin use.

- ※Please make sure to act according to the App prompts and affix the device to the appropriate locations.
- ※Only begin the use after confirmation that everything is correct.



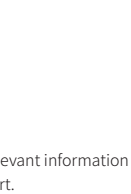
Use status has to be confirmed on the App before the end of the use.

- ※Please make sure that the electrode pad is turned off before removing it otherwise it may cause damage to the patient.

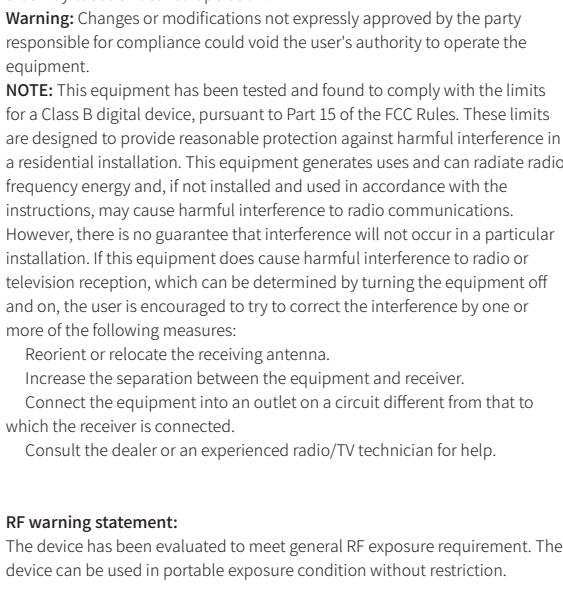


After use, please gently put electrode pad back on its panel.

- ※When removing electrode pad, please try not to touch the adhesive surface.
- ※Please do not apply pressure go the electrode pad, it can damage the surface.
- ※Please keep the electrode pad storage panel clean.



4.Main host body



※If RELEV falls off, the red indicating light will flash for 5 seconds and then stop working.

5.Electrode pad

When the stickiness of the skin of the electrode pad is reduced due to dirt or when patient's skin has a tingling sensation, you can wash the pad with a small amount of flowing cold water, rubbing gently with your fingers for a few seconds at the same time.

- Please do not use detergent.
- Please do not use paper tower or cloth to wipe the surface of the pad.
- After washing, please let surface of the pad dry naturally before next use.



Electrode pad maintenance

- Electrode pad should be stored on its dedicated storage panel.
- Please avoid getting dust, oily or sticky substances and other contaminants on the electrode pad to prevent reduction in stickiness.
- Please do not scratch the adhesive surface with a sharp object.

※Electrode pad durability varies, normal usage is an average of 50 times.

6.Specification

Name	Rehabilitation Instrument	Battery capacity	400mAh
Output frequency	0.5Hz~1200Hz	Main body size	W H L 58 x 14 x 45 mm
Main host body weight	≈40g	Electrode pad size	D H 50mm 1.5mm
Voltage	DC3.7V (Rechargeable lithium-ion polymer battery)		
Temperature and humidity when in use	0°C~40°C , 30%RH~85%RH		
Transport and storage temperature and humidity	-20°C~60°C , 10%RH~95%RH		
Operating atmospheric pressure	860hPa~1060hPa		
Transportation and storage atmospheric pressure	500hPa~1060hPa		
Enclosures	Electrode pads (a set of 2) User Manual Storage pouch (1) USB charging wire (1)		

※ Please be sure to use the special-purpose RELEV electrode pad.

If you encounter any problems when in use, please send relevant information to support@blemed.cn for technical support.

FCC STATEMENT :

This device complies with Part 15 of the FCC Rules. Operation is subject to the following two conditions:

- (1) This device may not cause harmful interference, and
- (2) This device must accept any interference received, including interference that may cause undesired operation.

Warning: Changes or modifications not expressly approved by the party responsible for compliance could void the user's authority to operate the equipment.

NOTE: This equipment has been tested and found to comply with the limits for a Class B digital device, pursuant to Part 15 of the FCC Rules. These limits are designed to provide reasonable protection against harmful interference in a residential installation. This equipment generates uses and can radiate radio frequency energy and, if not installed and used in accordance with the instructions, may cause harmful interference to radio communications. However, there is no guarantee that interference will not occur in a particular installation. If this equipment does cause harmful interference to radio or television reception, which can be determined by turning the equipment off and on, the user is encouraged to try to correct the interference by one or more of the following measures:

- Reorient or relocate the receiving antenna.
- Increase the separation between the equipment and receiver.
- Connect the equipment into an outlet on a circuit different from that to which the receiver is connected.
- Consult the dealer or an experienced radio/TV technician for help.

RF warning statement:

The device has been evaluated to meet general RF exposure requirement. The device can be used in portable exposure condition without restriction.



Follow us on our official Wechat account, to access product information and App download links.

Shenzhen BEILAN Technology Co., Ltd.



Thank you for choosing RELEV .