

# FCC TEST REPORT

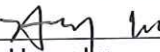
Product Name: Mobile Phone  
Trade Mark: N/A  
Model No.: CRUSH X565  
Report Number: 180709006RFM-2  
Test Standards: FCC 47 CFR Part 24 Subpart E  
FCC 47 CFR Part 2  
FCC ID: 2AIMEX565  
Test Result: PASS  
Date of Issue: July 26, 2018

Prepared for:

**SMT TELECOMM HK LIMITED**  
Unit C 8/F CHARMHILL CTR 50 HILLWOOD RD TST KL, Kowloon,  
Hong Kong

Prepared by:

**Shenzhen UnionTrust Quality and Technology Co., Ltd.**  
16/F, Block A, Building 6, Baoneng Science and Technology Park,  
Qingxiang Road No.1, Longhua New District, Shenzhen, China  
TEL: +86-755-2823 0888  
FAX: +86-755-2823 0886

Tested by:   
Henry Lu  
Project Engineer

Reviewed by:   
Kevin Liang  
Assistant Manager

Approved by:   
Billy Li  
Technical Director

Date: July 26, 2018  


**Shenzhen UnionTrust Quality and Technology Co., Ltd.**

Address: 16/F, Block A, Building 6, Baoneng Science and Technology Park, Qingxiang Road No.1, Longhua New District, Shenzhen, China  
Tel: +86-755-28230888 Fax: +86-755-28230886 E-mail: info@uttlab.com

[Http://www.uttlab.com](http://www.uttlab.com)

**Version**

Version No.	Date	Description
V1.0	July 26, 2018	Original

**Shenzhen UnionTrust Quality and Technology Co., Ltd.**

Address: 16/F, Block A, Building 6, Baoneng Science and Technology Park, Qingxiang Road No.1, Longhua New District, Shenzhen, China

Tel: +86-755-28230888

Fax: +86-755-28230886

E-mail: [info@uttlab.com](mailto:info@uttlab.com)[Http://www.uttlab.com](http://www.uttlab.com)

## CONTENTS

<b>1. GENERAL INFORMATION</b>	<b>4</b>
1.1 CLIENT INFORMATION	4
1.2 EUT INFORMATION	4
1.2.1 GENERAL DESCRIPTION OF EUT	4
1.2.2 DESCRIPTION OF ACCESSORIES	4
1.3 PRODUCT SPECIFICATION SUBJECTIVE TO THIS STANDARD	5
1.4 DESCRIPTION OF SUPPORT UNITS	5
1.5 TEST LOCATION	5
1.6 TEST FACILITY	6
1.7 DEVIATION FROM STANDARDS	6
1.8 ABNORMALITIES FROM STANDARD CONDITIONS	6
1.9 OTHER INFORMATION REQUESTED BY THE CUSTOMER	6
1.10 MEASUREMENT UNCERTAINTY	6
<b>2. TEST SUMMARY</b>	<b>7</b>
<b>3. EQUIPMENT LIST</b>	<b>8</b>
<b>4. TEST CONFIGURATION</b>	<b>9</b>
4.1 ENVIRONMENTAL CONDITIONS FOR TESTING	9
4.1.1 NORMAL OR EXTREME TEST CONDITIONS	9
4.2 TEST SETUP	10
4.2.1 FOR RADIATED EMISSIONS TEST SETUP	10
4.2.2 FOR CONDUCTED RF TEST SETUP	12
4.3 TEST CHANNELS	13
4.4 SYSTEM TEST CONFIGURATION	13
4.5 PRE-SCAN	13
<b>5. RADIO TECHNICAL REQUIREMENTS SPECIFICATION</b>	<b>15</b>
5.1 REFERENCE DOCUMENTS FOR TESTING	15
5.2 EQUIVALENT ISOTROPIC RADIATED POWER (EIRP)	15
5.3 CONDUCTED OUTPUT POWER	17
5.4 PEAK-TO-AVERAGE RATIO	18
5.5 99%&26dB BANDWIDTH	22
5.6 BAND EDGE AT ANTENNA TERMINALS	26
5.7 SPURIOUS EMISSIONS AT ANTENNA TERMINALS	29
5.8 FIELD STRENGTH OF SPURIOUS RADIATION	33
5.9 FREQUENCY STABILITY	46
<b>APPENDIX 1 PHOTOS OF TEST SETUP</b>	<b>48</b>
<b>APPENDIX 2 PHOTOS OF EUT CONSTRUCTIONAL DETAILS</b>	<b>48</b>

## 1. GENERAL INFORMATION

### 1.1 CLIENT INFORMATION

<b>Applicant:</b>	SMT TELECOMM HK LIMITED
<b>Address of Applicant:</b>	Unit C 8/F CHARMHILL CTR 50 HILLWOOD RD TST KL, Kowloon, Hong Kong
<b>Manufacturer:</b>	SMT TELECOMM HK LIMITED
<b>Address of Manufacturer:</b>	Unit C 8/F CHARMHILL CTR 50 HILLWOOD RD TST KL, Kowloon, Hong Kong

### 1.2 EUT INFORMATION

#### 1.2.1 General Description of EUT

<b>Product Name:</b>	Mobile Phone	
<b>Model No.:</b>	CRUSH X565	
<b>Add. Model No.:</b>	N/A	
<b>Trade Mark:</b>	N/A	
<b>DUT Stage:</b>	Identical Prototype	
<b>EUT Supports Function:</b>	<b>GSM Bands:</b>	GSM850/1900
	<b>UTRA Bands:</b>	Band II/ Band IV/ Band V
	<b>2.4 GHz ISM Band:</b>	IEEE 802.11b/g/n
		Bluetooth V4.0
<b>Software Version:</b>	SMT_SN_X565_V2984_FINAL	
<b>Hardware Version:</b>	W56A_V3	
<b>IMEI Code:</b>	387192451020364, 219254078364031; 321447530691208, 320359601481274	
<b>Sample Received Date:</b>	July 10, 2018	
<b>Sample Tested Date:</b>	July 10, 2018 to July 19, 2018	

#### 1.2.2 Description of Accessories

Adapter	
<b>Model No.:</b>	PCX565
<b>Input:</b>	100-240 V~50/60 Hz 0.15 A
<b>Output:</b>	5.0 V $\pm$ 1000 mA
<b>AC Cable:</b>	N/A
<b>DC Cable:</b>	N/A

Battery	
<b>Model No.:</b>	BPX565
<b>Battery Type:</b>	Lithium-ion Rechargeable Battery
<b>Rated Voltage:</b>	3.8 Vdc
<b>Rated Capacity:</b>	2000 mAh

Cable	
<b>Description:</b>	USB Micro-B Plug Cable
<b>Cable Type:</b>	Shielded without ferrite
<b>Length:</b>	1.1 Meter

### 1.3 PRODUCT SPECIFICATION SUBJECTIVE TO THIS STANDARD

<b>Support Networks:</b>	GSM, GPRS, WCDMA, HSDPA, HSUPA	
<b>Type of Modulation:</b>	GSM/GPRS:	GMSK
	WCDMA	BPSK
	HSDPA:	QPSK
	HSUPA:	QPSK
<b>Frequency Range:</b>	GSM/GPRS 1900:	1850.2-1909.8 MHz
	WCDMA Band II:	1852.4-1907.6 MHz
<b>Max RF Output Power:</b>	GSM/GPRS 1900:	30.20dBm
	WCDMA Band II:	23.32dBm
<b>Type of Emission:</b>	GSM/GPRS 1900:	247KGXW
	WCDMA Band II:	4M19F9W
<b>Antenna Type:</b>	PIFA Antenna	
<b>Antenna Gain:</b>	3.14 dBi	
<b>GPRS Class:</b>	Class 12	
<b>Normal Test Voltage:</b>	3.8 Vdc	
<b>Extreme Test Voltage:</b>	3.5 to 4.3Vdc	
<b>Extreme Test Temperature:</b>	-30 °C to +50 °C	

### 1.4 DESCRIPTION OF SUPPORT UNITS

The EUT has been tested with associated equipment below.

#### 1) Support Equipment

Description	Manufacturer	Model No.	Serial Number	Supplied by
N/A	N/A	N/A	N/A	N/A

#### 2) Support Cable

Cable No.	Description	Connector	Length	Supplied by
1	Antenna Cable	SMA	0.30 Meter	UnionTrust

### 1.5 TEST LOCATION

#### Shenzhen UnionTrust Quality and Technology Co., Ltd.

Address: 16/F, Block A, Building 6, Baoneng Science and Technology Park, Qingxiang Road No.1, Longhua New District, Shenzhen, China 518109  
Telephone: +86 (0) 755 2823 0888  
Fax: +86 (0) 755 2823 0886

## 1.6 TEST FACILITY

The test facility is recognized, certified, or accredited by the following organizations:

### **CNAS-Lab Code: L9069**

The measuring equipment utilized to perform the tests documented in this report has been calibrated once a year or in accordance with the manufacturer's recommendations, and is traceable under the ISO/IEC/EN 17025 to international or national standards. Equipment has been calibrated by accredited calibration laboratories.

### **IC-Registration No.: 21600-1**

The 3m Semi-anechoic chamber of Shenzhen UnionTrust Quality and Technology Co., Ltd. has been registered by Certification and Engineering Bureau of Industry Canada for radio equipment testing with Registration No.: 21600-1.

### **A2LA-Lab Certificate No.: 4312.01**

Shenzhen UnionTrust Quality and Technology Co., Ltd. has been accredited by A2LA for technical competence in the field of electrical testing, and proved to be in compliance with ISO/IEC 17025: 2005 General Requirements for the Competence of Testing and Calibration Laboratories and any additional program requirements in the identified field of testing.

### **FCC Accredited Lab.**

Designation Number: CN1194

Test Firm Registration Number: 259480

## 1.7 DEVIATION FROM STANDARDS

None.

## 1.8 ABNORMALITIES FROM STANDARD CONDITIONS

None.

## 1.9 OTHER INFORMATION REQUESTED BY THE CUSTOMER

None.

## 1.10 MEASUREMENT UNCERTAINTY

Where relevant, the following measurement uncertainty levels have been estimated for tests performed on the Product as specified in CISPR 16-4-2. This uncertainty represents an expanded uncertainty expressed at approximately the 95% confidence level using a coverage factor of k=2.

No.	Item	Measurement Uncertainty
1	Conducted emission 9KHz-150KHz	±3.8 dB
2	Conducted emission 150KHz-30MHz	±3.4 dB
3	Radiated emission 9KHz-30MHz	±4.9 dB
4	Radiated emission 30MHz-1GHz	±4.7 dB
5	Radiated emission 1GHz-18GHz	±5.1 dB
6	Radiated emission 18GHz-26GHz	±5.2 dB
7	Radiated emission 26GHz-40GHz	±5.2 dB



## 2. TEST SUMMARY

FCC 47 CFR Part 24 Subpart E Test Cases			
Test Item	Test Requirement	Test Method	Result
Equivalent Isotropic Radiated Power (EIRP)	FCC 47 CFR Part 2.1046(a) & FCC 47 CFR Part 24.232(c)	ANSI/TIA-603-E-2016 & KDB 971168 D01v03	PASS
Conducted Output Power	FCC 47 CFR Part 2.1046(a) & FCC 47 CFR Part 24.232(c)	ANSI/TIA-603-E-2016 & KDB 971168 D01v03	PASS
Peak-to-average ratio	FCC 47 CFR Part 24.232(d)	KDB 971168 D01v03	PASS
99%&26dB Bandwidth	FCC 47 CFR Part 2.1049(h) & FCC 47 CFR Part 24.238(b)	ANSI/TIA-603-E-2016 & KDB 971168 D01v03	PASS
Band Edge at antenna terminals	FCC 47 CFR Part 2.1051 & FCC 47 CFR Part 24.238(a)	ANSI/TIA-603-E-2016 & KDB 971168 D01v03	PASS
Spurious emissions at antenna terminals	FCC 47 CFR Part 2.1051 & FCC 47 CFR Part 24.238(a)(b)	ANSI/TIA-603-E-2016 & KDB 971168 D01v03	PASS
Field strength of spurious radiation	FCC 47 CFR Part 2.1053 & FCC 47 CFR Part 24.238(a)(b)	ANSI/TIA-603-E-2016 & KDB 971168 D01v03	PASS
Frequency stability	FCC 47 CFR Part 2.1055 & FCC 47 CFR Part 24.235	ANSI/TIA-603-E-2016 & KDB 971168 D01v03	PASS

### 3. EQUIPMENT LIST

Radiated Emission Test Equipment List						
Used	Equipment	Manufacturer	Model No.	Serial Number	Cal. date (mm dd, yyyy)	Cal. Due date (mm dd, yyyy)
<input checked="" type="checkbox"/>	3M Chamber & Accessory Equipment	ETS-LINDGREN	3M	N/A	Dec. 20, 2015	Dec. 19, 2018
<input checked="" type="checkbox"/>	Receiver	R&S	ESIB26	100114	Dec. 10, 2017	Dec. 10, 2018
<input checked="" type="checkbox"/>	Broadband Antenna	ETS-LINDGREN	3142E	00201566	Dec. 17, 2017	Dec. 17, 2018
<input checked="" type="checkbox"/>	Preamplifier	HP	8447F	2805A02960	Dec. 10, 2017	Dec. 10, 2018
<input checked="" type="checkbox"/>	Broadband Antenna (Pre-amplifier)	ETS-LINDGREN	3142E-PA	00201891	May 19, 2018	May 19, 2019
<input checked="" type="checkbox"/>	Horn Antenna	ETS-LINDGREN	3117	00164202	Dec. 17, 2017	Dec. 17, 2018
<input checked="" type="checkbox"/>	Horn Antenna (Pre-amplifier)	ETS-LINDGREN	3117-PA	00201874	May 22, 2018	May 22, 2019
<input checked="" type="checkbox"/>	Horn Antenna	ETS-LINDGREN	3116C	00200180	May 20, 2018	May 20, 2019
<input checked="" type="checkbox"/>	Horn Antenna (Pre-amplifier)	ETS-LINDGREN	3116C-PA	00202652	Dec. 17, 2017	Dec. 17, 2018
<input checked="" type="checkbox"/>	Multi device Controller	ETS-LINDGREN	7006-001	00160105	N/A	N/A
<input checked="" type="checkbox"/>	Wideband Radio Communication Tester	R&S	CMW500	116254	June 07, 2018	June 07, 2019
<input checked="" type="checkbox"/>	Test Software	Audix	e3	Software Version: 9.160323		

2/3/4G RF Test System Equipment List						
Used	Equipment	Manufacturer	Model No.	Serial Number	Cal. date (mm dd, yyyy)	Cal. Due date (mm dd, yyyy)
<input checked="" type="checkbox"/>	Receiver	R&S	ESR7	1316.3003K07-101181-K3	Dec. 10, 2017	Dec. 10, 2018
<input checked="" type="checkbox"/>	EXA Spectrum Analyzer	KEYSIGHT	N9010A	MY51440197	Dec.10, 2017	Dec. 10, 2018
<input checked="" type="checkbox"/>	Wideband Radio Communication Tester	R&S	CMW500	116254	June 07, 2018	June 07, 2019
<input checked="" type="checkbox"/>	Universal Radio Communication Tester	R&S	CMU200	114713	Dec. 10, 2017	Dec. 10, 2018
<input checked="" type="checkbox"/>	DC Source	KIKUSUI	PWR400L	LK003024	Sep. 14, 2017	Sep. 13, 2018
<input checked="" type="checkbox"/>	Temp & Humidity chamber	Votisch	VT4002	58566133290020	June 05, 2018	June 05, 2019



## 4. TEST CONFIGURATION

### 4.1 ENVIRONMENTAL CONDITIONS FOR TESTING

#### 4.1.1 Normal or Extreme Test Conditions

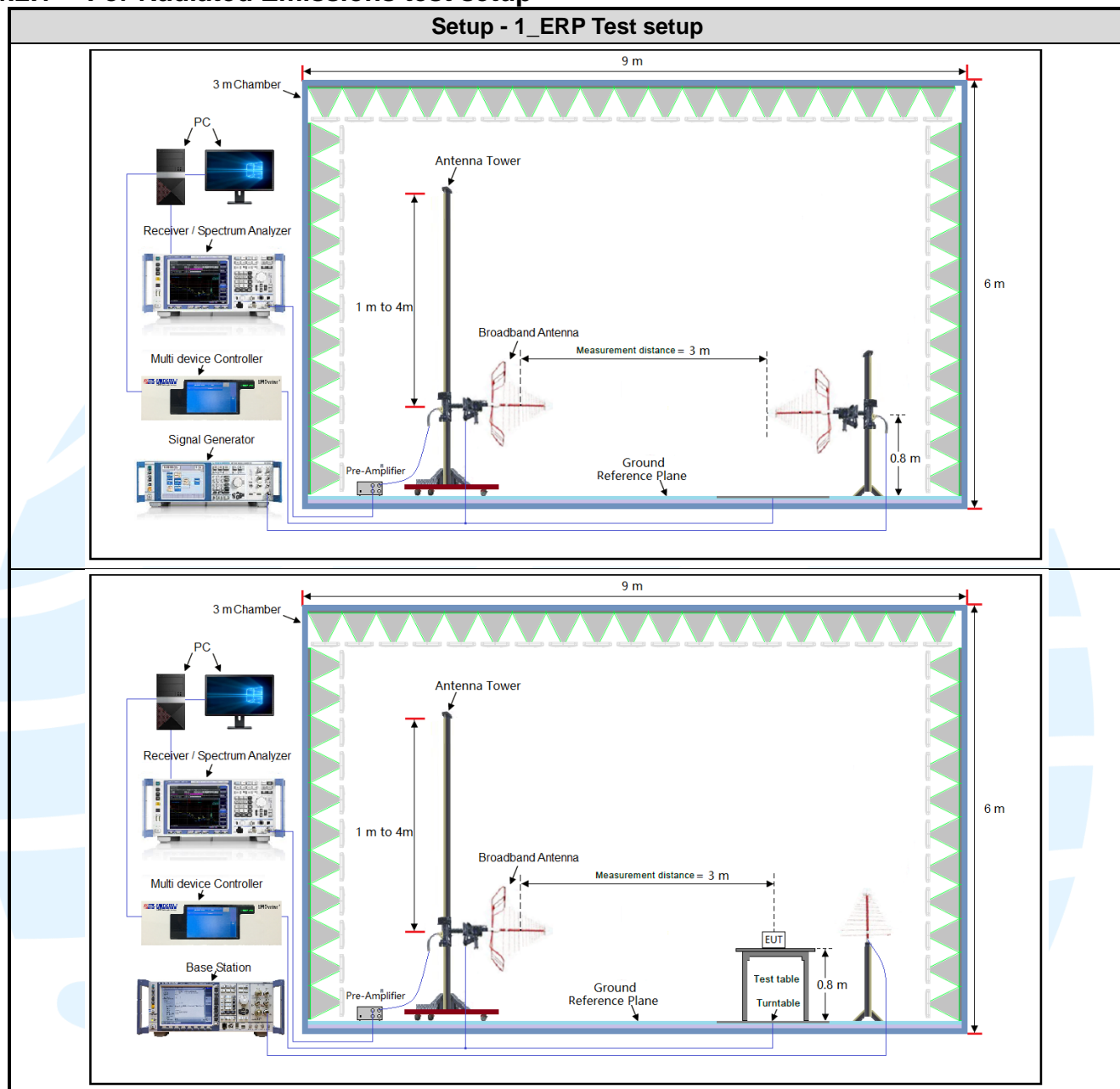
Test Environment	Selected Values During Tests		
Test Condition	Ambient		
	Temperature (°C)	Voltage (V)	Relative Humidity (%)
TN/VN	+15 to +35	3.8	20 to 75
TL/VL	-30	3.5	20 to 75
TH/VL	+50	3.5	20 to 75
TL/VH	-30	4.3	20 to 75
TH/VH	+50	4.3	20 to 75

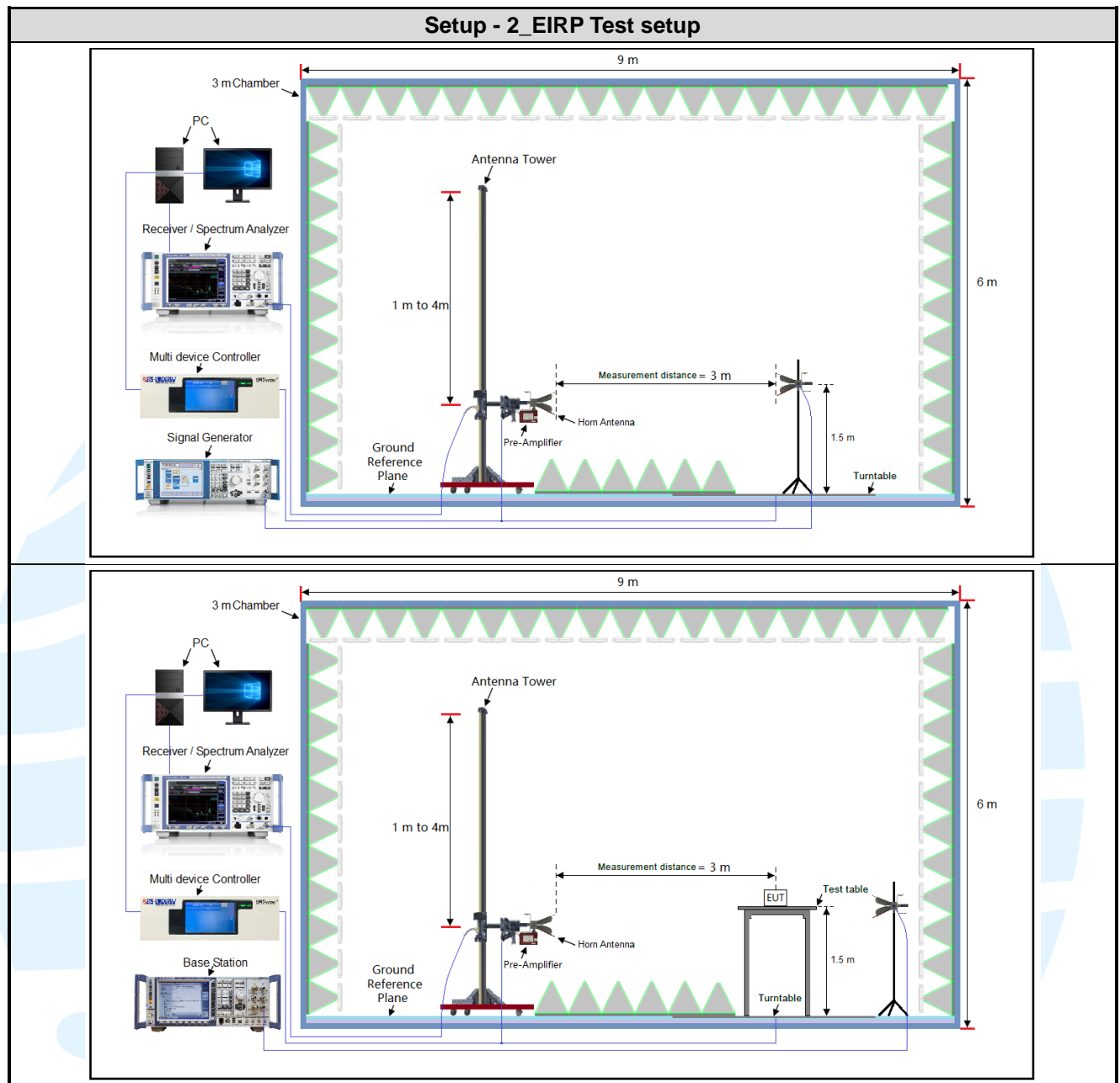
**Remark:**

- 1) The EUT just work in such extreme temperature of -30 °C to +50 °C and the extreme voltage of 3.5 V to 4.3 V, so here the EUT is tested in the temperature of -30 °C to +50 °C and the voltage of 3.5 V to 4.3 V.
- 2) VN: Normal Voltage; TN: Normal Temperature;  
TL: Low Extreme Test Temperature; TH: High Extreme Test Temperature;  
VL: Low Extreme Test Voltage; VH: High Extreme Test Voltage.

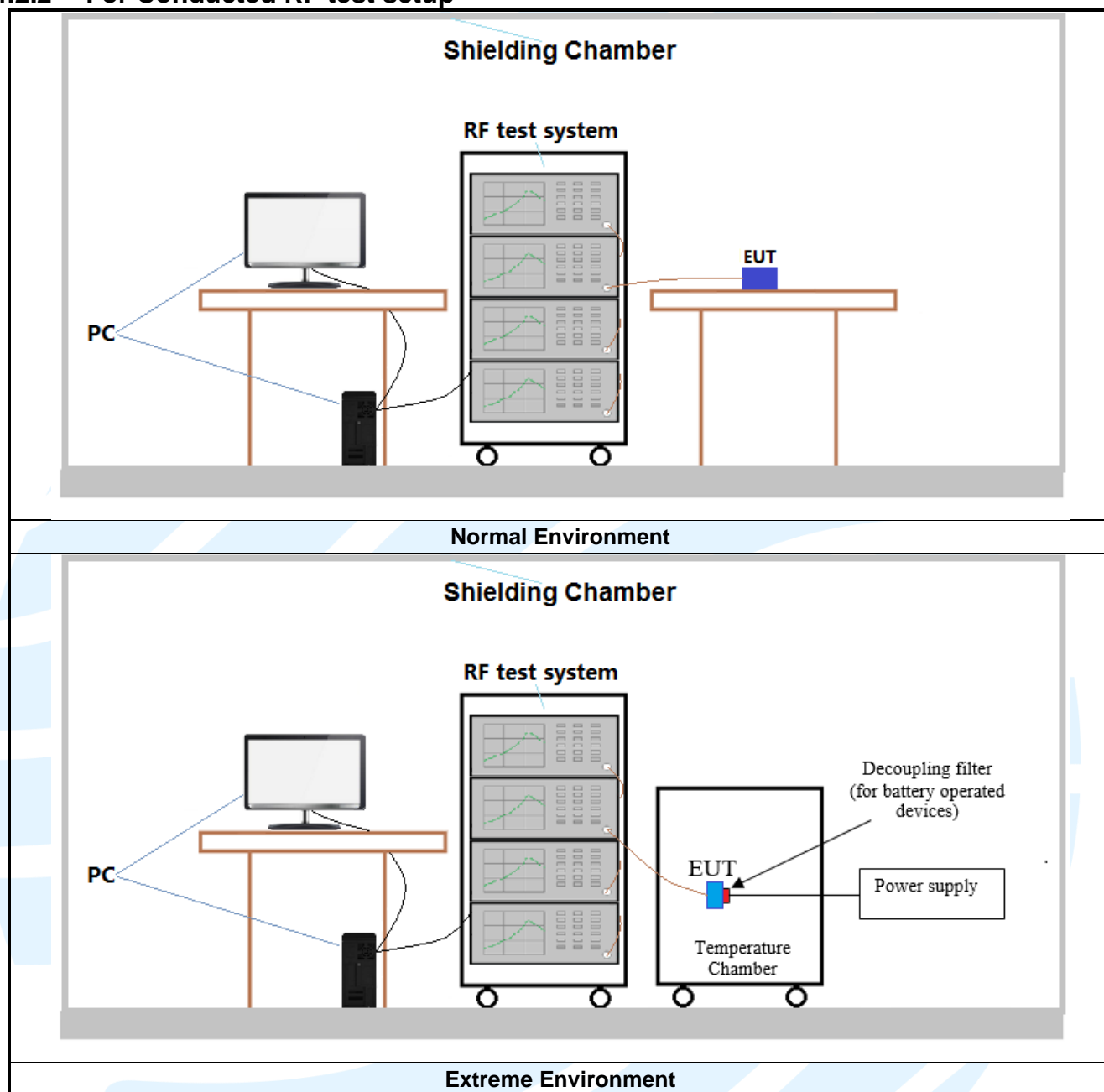
## 4.2 TEST SETUP

### 4.2.1 For Radiated Emissions test setup





#### 4.2.2 For Conducted RF test setup



### 4.3 TEST CHANNELS

Band	Tx/Rx Frequency	RF Channel		
		Low(L)	Middle(M)	High(H)
GSM/GPRS	Tx (1850 MHz-1910 MHz)	Channel 512	Channel 661	Channel 810
		1850.2 MHz	1880.0 MHz	1909.8 MHz
WCDMA Band II	Tx (1850 MHz-1910 MHz)	Channel 9262	Channel 9400	Channel 9538
		1852.4 MHz	1880.0 MHz	1907.6 MHz
		1851.25MHz	1880.0 MHz	1908.75 MHz

### 4.4 SYSTEM TEST CONFIGURATION

For emissions testing, the equipment under test (EUT) setup to transmit continuously to simplify the measurement methodology. Care was taken to ensure proper power supply voltages during testing. During testing, radiated emission were performed with the EUT set to transmit at the channel with highest output power as worst-case scenario. It was powered by a 3.8Vdc rechargeable Li-on battery. Only the worst case data were recorded in this test report.

Pre-Scan has been conducted to determine the worst-case mode from all possible combinations between available modulations, data rates, X/Y/Z axis, and antenna ports.

All readings are extrapolated back to the equivalent three meter reading using inverse scaling with distance. Analyzer resolution is 100 kHz or greater for frequencies below 1000MHz. The resolution is 1 MHz or greater for frequencies above 1000MHz. The spurious emissions more than 20 dB below the permissible value are not reported.

Radiated emission measurement were performed from the lowest radio frequency signal generated in the device which is greater than 9 kHz to the tenth harmonic of the highest fundamental frequency or to 40 GHz, whichever is lower.

### 4.5 PRE-SCAN

**Pre-scan under all rate at lowest middle and highest channel, find the transmitter power as below:**  
SIM 1 Card Conducted transmitter power measurement result.

GSM 1900 Maximum Average Power (dBm)			
Channel	512	661	810
Frequency(MHz)	1850.2 MHz	1880.0 MHz	1909.8 MHz
GSM (GMSK, 1Tx-slot)	30.07	30.15	<b>30.20</b>
GPRS (GMSK, 1Tx-slot)	30.03	30.08	30.11
GPRS (GMSK, 2Tx-slot)	29.25	29.29	29.57
GPRS (GMSK, 3Tx-slot)	27.32	27.50	27.87
GPRS (GMSK, 4Tx-slot)	26.04	26.33	26.87

WCDMA Band II Maximum Average Power (dBm)			
Channel	9262	9400	9538
Frequency(MHz)	1852.4 MHz	1880.0 MHz	1907.6 MHz
RMC 12.2K	23.32	23.30	23.00
HSDPA Subtest-1	22.16	22.18	21.97
HSDPA Subtest-2	22.13	22.16	21.95
HSDPA Subtest-3	21.66	21.64	21.43
HSDPA Subtest-4	21.63	21.62	21.39
HSUPA Subtest-1	22.10	22.01	21.70
HSUPA Subtest-2	20.12	20.02	19.72
HSUPA Subtest-3	21.13	21.08	20.81
HSUPA Subtest-4	19.66	19.62	19.43
HSUPA Subtest-5	21.71	21.56	21.42

Pre-scan all bandwidth and RB, find worse case mode are chosen to the report, the worse mode applicability and tested channel detail as below:

Band	Radiated	Conducted
GSM/GPRS	1) GSM (GMSK, 1Tx-slot) Link 2) GPRS (GMSK, 1Tx-slot) Link	1) GSM (GMSK,1Tx-slot) Link 2) GPRS (GMSK, 1Tx-slot) Link
WCDMA Band II	RMC 12.2Kbps Link	RMC 12.2Kbps Link



## 5. RADIO TECHNICAL REQUIREMENTS SPECIFICATION

### 5.1 REFERENCE DOCUMENTS FOR TESTING

No.	Identity	Document Title
1	FCC 47 CFR Part 2 Subpart J	Frequency allocations and radio treaty matters; general rules and regulations
2	FCC 47 CFR Part 24 Subpart E	PART 24 – PERSONAL COMMUNICATIONS SERVICES Subpart E – Broadband PCS
3	ANSI/TIA-603-E-2016	Land Mobile FM or PM Communications Equipment Measurement and Performance Standards
4	KDB 971168 D01	KDB 971168 D01 Power Meas License Digital Systems v03

### 5.2 EQUIVALENT ISOTROPIC RADIATED POWER (EIRP)

**Test Requirement:** FCC 47 CFR Part 2.1046(a) & FCC 47 CFR Part 24.232(c)

**Test Method:** KDB 971168 D01v03 & ANSI/TIA-603-E-2016

**Limit:**

Mobile and portable stations are limited to 2 watts EIRP.

**Test Procedure:**

Test procedure as below:

- 1) The EUT was powered ON and placed on a 0.8/1.5m high table at a 3 meter semi/fully Anechoic Chamber. The antenna of the transmitter was extended to its maximum length. Modulation mode and the measuring receiver shall be tuned to the frequency of the transmitter under test.
- 2) The EUT was set 3 meters away from the interference-receiving antenna, which was mounted on the top of a variable-height antenna tower.
- 3) The disturbance of the transmitter was maximized on the test receiver display by raising and lowering from 1m to 4m the receive antenna and by rotating through 360° the turntable. After the fundamental emission was maximized, a field strength measurement was made.
- 4) Steps 1) to 3) were performed with the EUT and the receive antenna in both vertical and horizontal polarization.
- 5) The transmitter was then removed and replaced with another antenna. The center of the antenna was approximately at the same location as the center of the transmitter.
- 6) A signal at the disturbance was fed to the substitution antenna by means of a non-radiating cable. With both the substitution and the receive antennas horizontally polarized, the receive antenna was raised and lowered to obtain a maximum reading at the test receiver. The level of the signal generator was adjusted until the measured field strength level in step 3) is obtained for this set of conditions.
- 7) The output power into the substitution antenna was then measured.
- 8) Steps 6) and 7) were repeated with both antennas polarized.
- 9) Calculate power in dBm by the following formula:

$$ERP(dBm) = Pg(dBm) - \text{cable loss (dB)} + \text{antenna gain (dBd)}$$

$$EIRP(dBm) = Pg(dBm) - \text{cable loss (dB)} + \text{antenna gain (dBi)}$$

$$EIRP = ERP + 2.15dB$$

where:

Pg is the generator output power into the substitution antenna.

- 10) Test the EUT in the lowest channel, the middle channel the Highest channel
- 11) The radiation measurements are performed in X, Y, Z axis positioning for EUT operation mode, and found the Y axis positioning which it is worse case.
- 12) Repeat above procedures until all frequencies measured was complete.

**Receiver Setup:**

Frequency	Detector	RBW	VBW	Remark
30MHz-1GHz	Peak	100kHz	300kHz	Peak
Above 1GHz	Peak	1MHz	3MHz	Peak

**Test Setup:**

Refer to section 4.2.1 for details.

**Instruments Used:**

Refer to section 3 for details

**Test Mode:**

Link mode

**Test Results:**

Pass

**Test Data:**

See table below

Maximum EIRP (dBm)				
Channel	GSM 1Tx-slot	WCDMA RMC 12.2Kbps	Limit (dBm)	Result
Lowest	28.39	23.43	33.01	Pass
Middle	27.54	19.68	33.01	Pass
Highest	26.22	18.72	33.01	Pass



### 5.3 CONDUCTED OUTPUT POWER

**Test Requirement:** FCC 47 CFR Part 2.1046(a) & FCC 47 CFR Part 24.232(c)

**Test Method:** ANSI/TIA-603-E-2016 & KDB 971168 D01v03

**Limit:**

Mobile and portable stations are limited to 2 watts EIRP.

**Test Procedure:**

The EUT was set up for the maximum power with GSM, GPRS, EDGE, WCDMA, CDMA2000, and LTE link data modulation and link up with simulator. Set the EUT to transmit under low, middle and high channel and record the power level shown on simulator.

Note: The cable loss and attenuator loss were offset into measure device as an amplitude offset.

**Test Setup:** Refer to section 4.2.2 for details.

**Instruments Used:** Refer to section 3 for details

**Test Mode:** Link mode

**Test Results:** Pass

**Test Data:** The full result refer to section 4.5 for details.

## 5.4 PEAK-TO-AVERAGE RATIO

**Test Requirement:** FCC 47 CFR Part 24.232(d)

**Test Method:** KDB 971168 D01v03

**Limit:** In measuring transmissions in this band using an average power technique, the peak-to-average ratio (PAR) of the transmission may not exceed 13 dB

**Test Procedure:**

The transmitter output was connected to a calibrated coaxial cable and coupler, the other end of which was connected to a spectrum analyzer.

- Set resolution/measurement bandwidth  $\geq$  signal's occupied bandwidth
- Set the number of counts to a value that stabilizes the measured CCDF curve
- Record the maximum PAPR level associated with a probability of 0.1 %

Note: The cable loss and attenuator loss were offset into measure device as an amplitude offset.

**Test Setup:** Refer to section 4.2.2 for details.

**Instruments Used:** Refer to section 3 for details

**Test Mode:** Link mode

**Test Results:** Pass

**Test Data:** See table below

Peak-to-average ratio (dB)					
Channel	GSM 1Tx-slot	GPRS 1Tx-slot	EDGE 1Tx-slot	Limit (dBm)	Result
Lowest	0.31	0.52	N/A	13	Pass
Middle	0.34	0.37	N/A	13	Pass
Highest	0.31	0.63	N/A	13	Pass

Channel	WCDMA RMC 12.2Kbps	HSDPA	HSUPA	Limit (dBm)	Result
Lowest	2.12	2.75	2.70	13	Pass
Middle	2.41	2.90	2.72	13	Pass
Highest	1.97	2.52	2.90	13	Pass

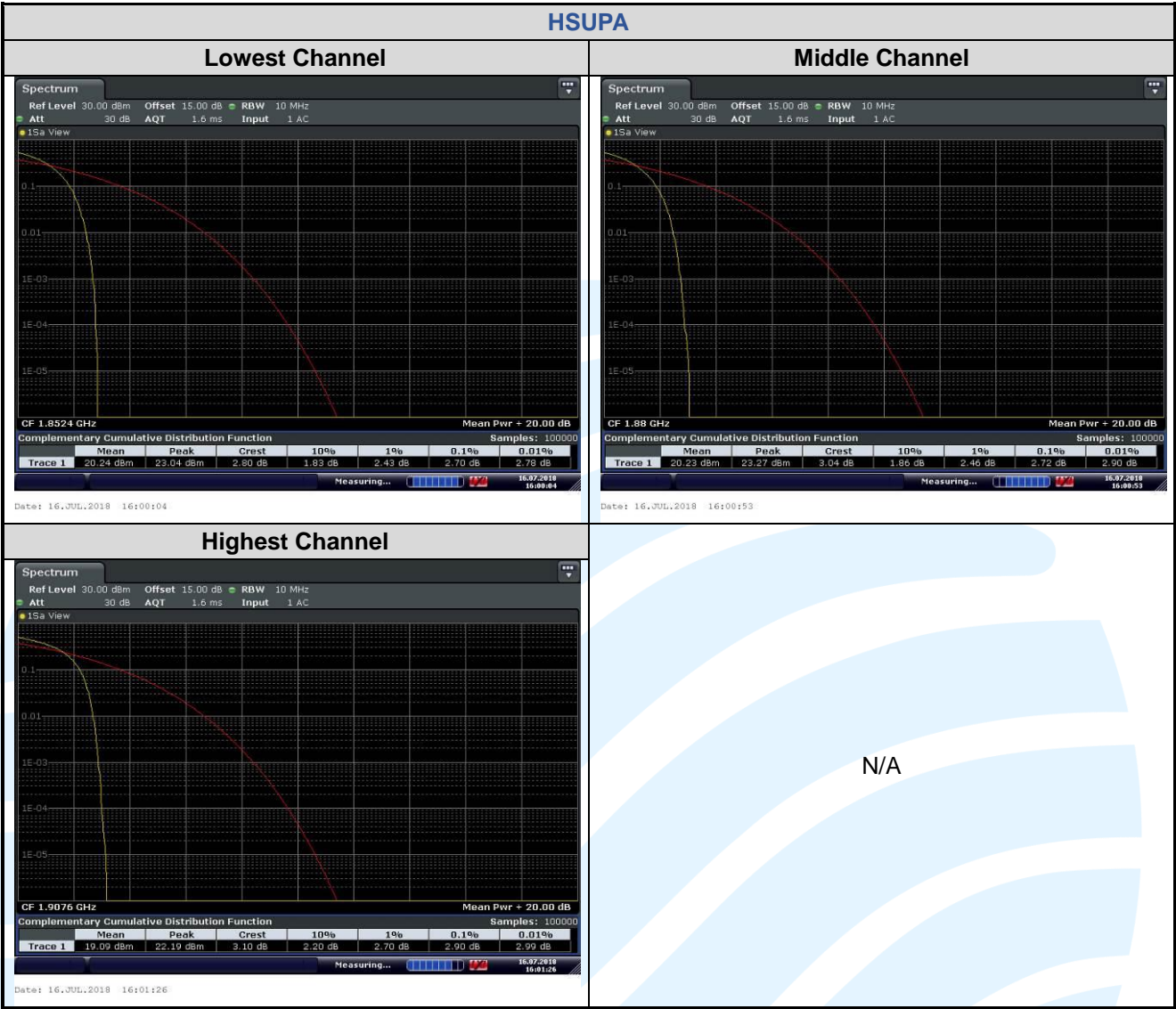
The test plot as follows:











## 5.5 99%&26DB BANDWIDTH

**Test Requirement:** FCC 47 CFR Part 2.1049(h) & FCC 47 CFR Part 24.238(b)

**Test Method:** ANSI/TIA-603-E-2016 & KDB 971168 D01v03

**Limit:** No Limit

**Test Procedure:**

The transmitter output was connected to a calibrated coaxial cable and coupler, the other end of which was connected to a spectrum analyzer. The occupied bandwidth was measured with the spectrum analyzer at the low, middle and high channel in each band. The 99% and -26dB bandwidths was also measured and recorded.

Note: The cable loss and attenuator loss were offset into measure device as an amplitude offset.

**Test Setup:** Refer to section 4.2.2 for details.

**Instruments Used:** Refer to section 3 for details

**Test Mode:** Link mode

**Test Results:** Pass

**Test Data:** See table below

99% & 26 dB Bandwidth				
Test Mode	Channel	Frequency (MHz)	26 dB BW (kHz)	99% BW (kHz)
GSM 1Tx-slot	512	1850.2	317.9	246.61
	661	1880.0	311.7	243.80
	810	1909.8	320.9	244.85
GPRS 1Tx-slot	512	1850.2	316.3	243.17
	661	1880.0	313.3	242.64
	810	1909.8	319.2	242.85

99% & 26 dB Bandwidth				
Test Mode	Channel	Frequency (MHz)	26 dB BW (MHz)	99% BW (MHz)
WCDMA RMC 12.2Kbps	9262	1852.4	4.736	4.1783
	9400	1880.0	4.725	4.1657
	9538	1907.6	4.781	4.1938
HSDPA	9262	1852.4	4.691	4.1674
	9400	1880.0	4.695	4.1683
	9538	1907.6	4.697	4.1683
HSUPA	9262	1852.4	4.714	4.1720
	9400	1880.0	4.699	4.1584
	9538	1907.6	4.708	4.1790

The test plot as follows:

