



evolve

USER MANUAL

To prevent DEATH, SERIOUS INJURY or PROPERTY DAMAGE, you should read, understand and follow the warnings and instructions in this manual. Keep for future reference.



CONGRATULATIONS ON YOUR PURCHASE!

**FROM ALL OF US AT EVOLVE, WE WANT TO
THANK YOU FOR CHOOSING US. WE ARE STOKED
TO WELCOME YOU TO THE EVOLVE COMMUNITY!**

Please read this User Manual carefully before riding, so you will be thoroughly familiar with the proper operation of your Evolve Skateboard, its features, capabilities and limitations. To ensure a long, trouble-free life for your Evolve Skateboard, provide it with the proper care and maintenance as described in this manual. Of course, it is not practical or possible to warn you about all the hazards associated with operating or maintaining your Evolve Skateboard. You must use your own good judgment.

For replacement parts and accessories, you should always use Evolve Skateboards approved parts, as they have been specially designed for your board and are manufactured to meet your Evolve Skateboards demanding standards.

This manual should be considered a permanent part of your Evolve Skateboard and should remain with the skateboard when it is sold.

**IF YOU NEED ANY ASSISTANCE, PLEASE DO
NOT HESITATE TO REACH OUT TO US.**

WWW.EVOLVESKATEBOARDS.COM

SCAN THE QR CODE
TO FIND RIDING TIPS,
HOW-TO'S, EPIC
CONTENT AND &
MUCH MORE.



CONTENTS

IMPORTANT SAFETY INFORMATION	6
SAFETY MESSAGES	7
DIABLO CARBON	12
DIABLO BAMBOO	13
RENEGADE DIABLO	14
PHAZE REMOTE	15
TURNING THE BOARD ON / OFF	17
TURNING THE REMOTE ON / OFF	18
CONTROLLING YOUR BOARD	19
YOUR FIRST RIDE	19
FOOT PLACEMENT	20
PHAZE REMOTE SCREEN	22
REMOTE SCREEN GUIDE	22
REMOTE MENU CONTROLS	23
PAIRING / SYNCING THE REMOTE	24
AUTO SAFE MODE	25
CHANGING SPEED MODES ON THE REMOTE	26
SAFETY SWITCH	28
HOW TO ACCELERATE	29
HOW TO BRAKE	30
SELECT KPH OR MPH	31
SPEED LIMITER	32

CHANGING THE WHEEL & GEAR SETTING	34
TRIP METER	36
OTHER REMOTE OPERATION FUNCTIONS	36
POWER SAVE FUNCTION	37
SLEEP MODE	37
SMART START	37
BATTERY INDICATOR DISPLAY	38
LED SETTINGS	40
MY BOARD	41
TRIGGER CALIBRATION	42
BATTERY CARE	44
CHARGING SAFETY	46
CHARGING THE BOARD	48
CHARGING THE REMOTE	49
HEAT PROTECTION	50
OVER CURRENT PROTECTION	51
ERROR CODES	52
STORING YOUR BOARD	52
TROUBLESHOOTING	53
MAINTAINING YOUR BOARD	53
DISPOSAL	54
WARRANTY	54
FCC	55



IMPORTANT SAFETY INFORMATION

READ AND UNDERSTAND USER MANUAL BEFORE RIDING

Read the entire User Manual before riding on your Evolve Skateboard and keep it for reference. This User Manual contains important safety, performance and service information.

Like any sport, skateboarding involves the potential risk of death, serious injury and property damage. By choosing to ride, you assume the responsibility for that risk, so you need to know - and to practice - the rules of safe and responsible skateboarding. Proper use and maintenance of your skateboard reduces the risk of injury. If you have any questions or do not understand something, contact your regional Evolve distributor.

This manual is not intended as a comprehensive use, service, repair or maintenance manual. Please see your regional distributor for all service, repairs or maintenance. Your regional distributor may also be able to refer you to resources on service, repair or maintenance. (i.e. links to our YouTube channel).

RIDER'S RESPONSIBILITY REGARDING REGULATIONS

It is the rider's responsibility to obey the regulations that apply to your Evolve Skateboard.

The regulations covering the use of your Evolve Skateboard vary by state/province, and even municipality in certain locations. You must comply with the local regulations related to the minimum age of the rider, insurance, license plate, traffic and maximum speed regulations and any other regulations. These regulations may change at any time.

INTENDED USE

The intended use of your Evolve Skateboard is to be ridden by one adult rider (Age 16 and up and up to 100kg (220 lbs)) at a time for personal transportation and recreational use. Any other use is prohibited and may result in **SERIOUS INJURY** or **DEATH**.

Your Evolve Skateboard is **NOT INTENDED** for stunts or jumping of any kind.

Riders should be proficient skateboarders riding on paved surfaces or dirt paths where the tyres are always on the ground. Only use on roadways where permitted by law (we recommend not riding on pedestrian use shared lanes or sidewalks).



The recommended rider age is 16 and older. Any rider unable to fit comfortably on the skateboard should not attempt to ride it. A parent's decision to allow their child to ride this product should be based on the child's maturity, skill and ability to follow rules. Riders under the age of 18 should ride under adult supervision.



SAFETY MESSAGES

WARNING

TO PREVENT SERIOUS INJURY OR DEATH

- Read all safety warnings and all instructions.
- Always ride within your limits and the limits of your Evolve Skateboard. **ALWAYS** ride at speeds at which you are comfortable without power or brakes. Your board can lose power or brakes during your ride if the available charge in the batteries in your board/remote is too low or in extenuating circumstances.
- Only for use by persons 16 years of age and above. Riders must have the physical coordination, reaction and mental capabilities to control a skateboard and manage traffic, road conditions and sudden situations, as well as to respect the laws and instructions governing electric skateboard use. Persons with any mental or physical conditions that may make them susceptible to injury, impair their physical dexterity or mental capabilities to recognise, understand, and follow safety instructions and to be able to understand the hazards inherent in its use, should not use or be permitted to use products inappropriate for their abilities.
- Never ride under the influence of drugs and/or alcohol. 
- Consult a doctor before using the device if you have any medical condition or issue that affects your ability to safely perform physical activities, or if you:
 - are or may be pregnant;
 - have heart, respiratory, back, joint, or other orthopaedic conditions;
 - have high blood pressure;
 - have difficulty with physical exercise; or
 - have been instructed to restrict physical activity.
- Always keep small parts away from children. Some skateboard accessories may present a choking hazard to small children.
- Never modify your frame or skateboard in any way. Do not drill, file or remove parts from your Evolve Skateboard. Do not install incompatible components or hardware.
- **PINCH POINT HAZARD.** Keep fingers, hair, clothing (including shoelaces) jewellery and other objects away from belts, wheels and motors. 
- Take responsibility for your own **SAFETY**. If you have any questions or do not understand something, contact Evolve at **EVOLVESKATEBOARDS.COM**



HELMETS, PROTECTIVE PADS AND FOOTWEAR

- Always wear a helmet. Wearing a helmet properly may reduce the risk of a severe head injury. When riding, always wear a helmet that meets or exceeds the standards of the Consumer Product Safety Commission (CPSC).
- Ensure your helmet fits your head and is properly secured.
- Always read your helmet manual to make sure your helmet is properly adjusted for your head according to the fitting instructions provided by your helmet manufacturer.
- A proper fitting helmet should be comfortable and not rock forward/backward or side to side.
 - The helmet should sit level to protect your forehead and should not have more than a 2 finger gap from your eyebrows. **NEVER** wear your helmet tipped back to expose your forehead or angled left or right.
 - Adjust straps so sliders are below and in front of the ear on both sides.
 - Buckle chin strap. Adjust strap so no more than two fingers fit between the strap and your chin.
- Elbow pads and knee pads are recommended for additional protection.
- Always wear athletic shoes (lace-up shoes with rubber soles), never ride barefooted or wearing sandals. Keep shoelaces tied and away from the wheels and the drive system.



FOLLOW SKATEBOARD REGULATIONS ON AND OFF ROAD

- **BE AWARE OF SKATEBOARD REGULATIONS IN YOUR AREA.**
Generally, the regulations for the use of an Evolve Skateboard are the same as local Personal Mobility Device (PMD) regulations or those for a standard skateboard. There may be local differences such as where you can ride, minimum rider age, or required equipment and registration regulations. It is your responsibility to know the local regulations that apply to an electric skateboard for the area you intend to ride and to obey them.
- **DO NOT RIDE ON BUSY ROADS WITH LINE MARKINGS.**
- **ALWAYS RESPECT PEDESTRIANS!!!**



RIDE AT YOUR OWN RISK AND USE COMMON SENSE

- **YOUR EVOLVE SKATEBOARD HAS A MAXIMUM SPEED OF 50 KPH* (31 MPH).**

* TOP SPEED FOR DIABLO SERIES.

- Do not ride distracted. Always remain alert to all riding conditions. Using technology (including your mobile phone or music player) while riding could distract you. Only adjust settings using Phaze remote when you are off your board and in a safe, stationary position.
- Never use headphones or a mobile phone to talk or text when riding.
- Always ride defensively. Watch out for potential obstacles that could force you to swerve suddenly or lose control. Braking while turning may reduce your ability to control your Evolve Skateboard.
- Look ahead and brake sooner. You may be moving faster and your electric skateboard is heavier as compared to a regular skateboard, so you may need to react and brake sooner when riding. Other road users may not expect you to be travelling at higher speeds. Riding faster increases your risk of death or serious injury from an accident.
- Slow down well before entering corners, so you do not enter a corner too quickly. You should also pay particular attention to terrain conditions as you may approach obstacles faster than expected.
- Do not jump on the board, do not ride off gutters or curbs, do not smash the board into hard objects, do not drop the board on the ground for starting operation to prevent damaging your board and its systems.
- **SPORT** and **CORSA** Modes are very powerful and the remote acceleration and brakes are highly sensitive. Be very gentle with the controls to avoid being thrown off the board. Practice with these Modes by trying to move as slowly as possible **BEFORE** riding at higher speeds in these Modes.



AVOID RIDING AT NIGHT

- Riding at night comes with more risks than riding during the day due to decreased visibility. Others may have difficulty seeing you and you may not see obstacles in your path.
- You should wear reflective clothing at night. You may want to attach additional flashing lights on your clothing or helmet.
- Always have appropriate lighting installed when riding at night. Ensure you are aware of your local laws regarding light requirements.



RIDING ON HILLS

- Riding on hills can be extremely dangerous; what goes up must come down! If you ride up a steep hill and you intend to ride down this same hill, you must know how to control your speed without the use of the skateboard brakes. Heavy braking on steep terrain could cause the motors to overheat or battery to overcharge and then you may not have the skateboard braking system available to assist you.
- Your Evolve Skateboard can climb hills of up to 35% gradients. Riding continuously on steep hills will put massive stress on your board, the motors and the brakes.
- If you feel the board slowing down on a steep hill, this may be the protections providing you warning that the board is working too hard. You must consider stopping to avoid risking damage to your board and the electronics.

NOTE: Damage from overloading the electronics and the motors is not covered by warranty.



DO NOT RIDE IN WET CONDITIONS

- Riding in wet conditions will significantly reduce grip. This may result in the board aquaplaning or sliding from under your feet or the wheels slipping or sliding. It will also take longer for you to brake or stop. The risk of a crash is dramatically increased in wet conditions.
- Your Evolve Skateboard is not designed to be subjected to inclement weather, extremely heavy showers or submersion in water.

NOTE: Water damage is not covered under warranty.

WARNING

DO NOT CHARGE OR USE YOUR BATTERY IF IT IS DAMAGED OR IF YOU CAN SEE TRACES OF WATER. DO NOT ATTEMPT TO DISASSEMBLE THE BATTERY. RISK OF FIRE. NO USER SERVICEABLE PARTS.

SIGNAL WORDS



Indicates a hazardous situation that, if not avoided, will result in death or serious injury.



Indicates a hazardous situation that, if not avoided, could result in death or serious injury.



Indicates a hazardous situation that, if not avoided, could result in minor or Moderate injury.



Indicates information considered important, but not hazard related (e.g. messages relating to property damage).

SYMBOL INDEX



Safety Alert Symbol. It is to alert you to potential personal injury hazards. Obey all safety messages that follow this symbol to avoid possible serious injury or death.



PINCH POINT Hazard. Keep fingers, hair, clothing (including shoelaces) jewellery and other objects away from belts, wheels and motors.



NEVER ride under the influence of drugs and/or alcohol.

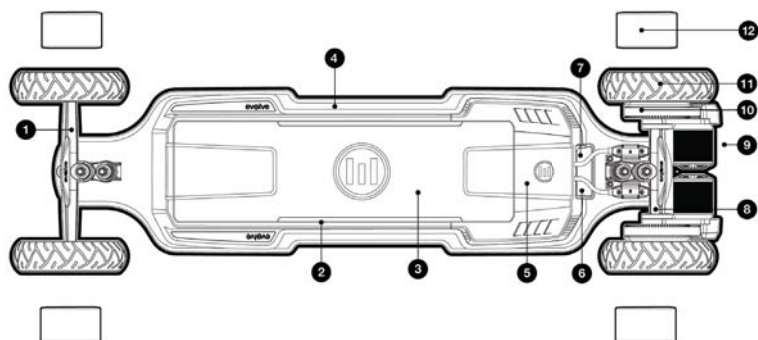


ALWAYS wear a helmet and protective elbow and knee pads.



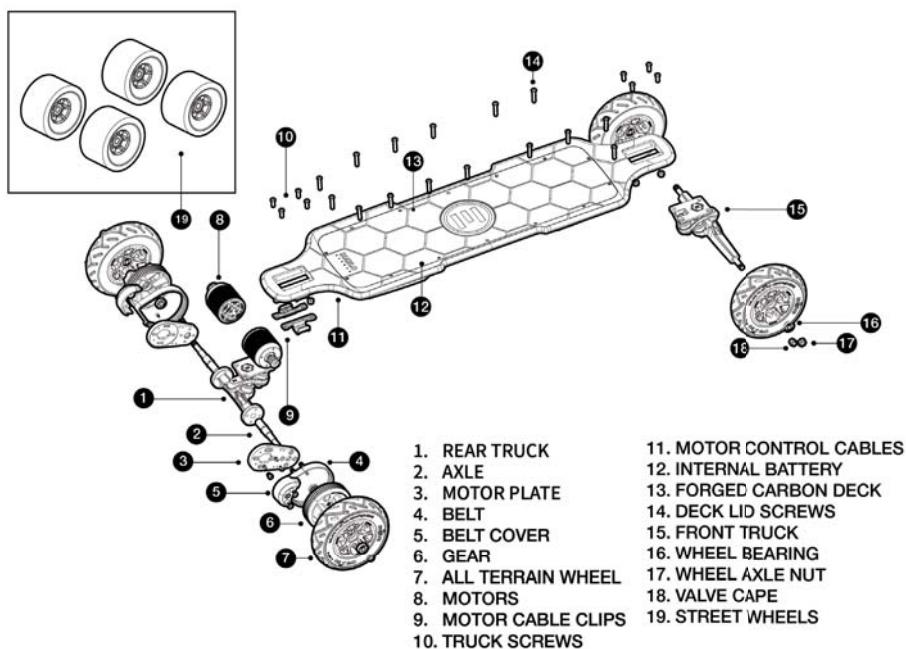
Read, understand and follow the warnings and instructions in this manual.

DIABLO CARBON



1. FRONT TRUCK
2. DOWNLIGHTS
3. BATTERY ENCLOSURE
4. FORGED CARBON DECK
5. MOTOR CONTROLLER
6. ON/OFF BUTTON

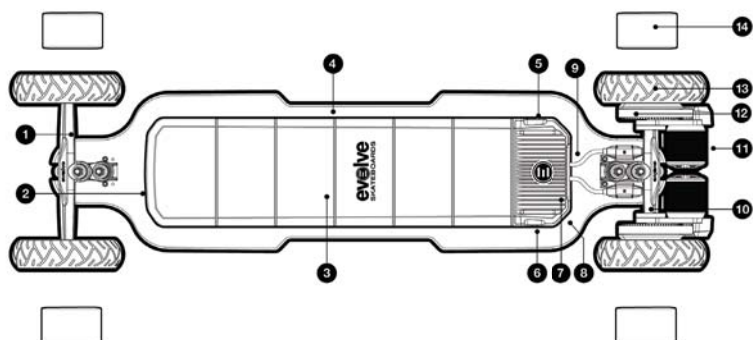
7. CHARGE PORT
8. REAR TRUCK
9. MOTORS
10. BELT
11. ALL TERRAIN WHEELS
12. STREET WHEELS



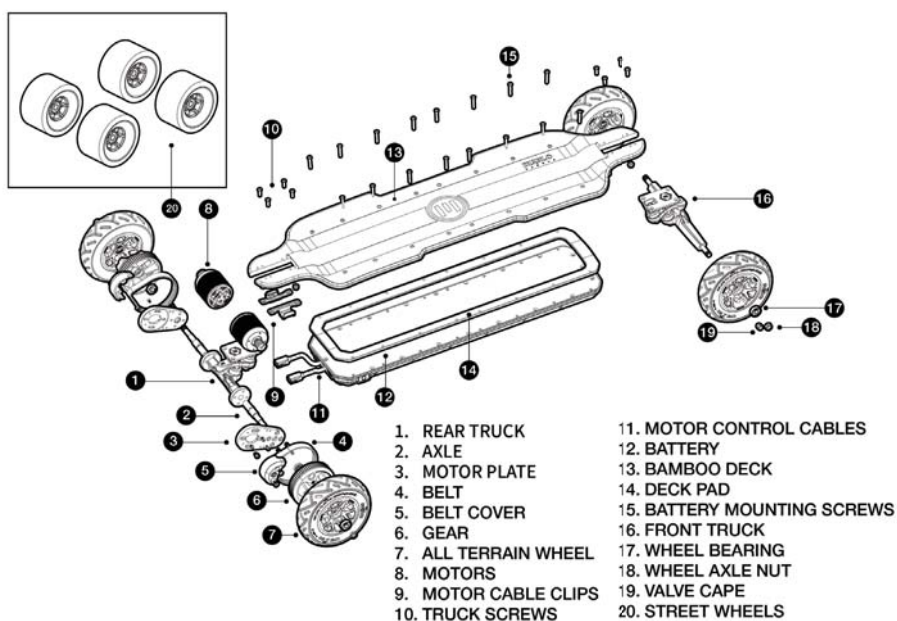
1. REAR TRUCK
2. AXLE
3. MOTOR PLATE
4. BELT
5. BELT COVER
6. GEAR
7. ALL TERRAIN WHEEL
8. MOTORS
9. MOTOR CABLE CLIPS
10. TRUCK SCREWS

11. MOTOR CONTROL CABLES
12. INTERNAL BATTERY
13. FORGED CARBON DECK
14. DECK LID SCREWS
15. FRONT TRUCK
16. WHEEL BEARING
17. WHEEL AXLE NUT
18. VALVE CAPE
19. STREET WHEELS

DIABLO BAMBOO

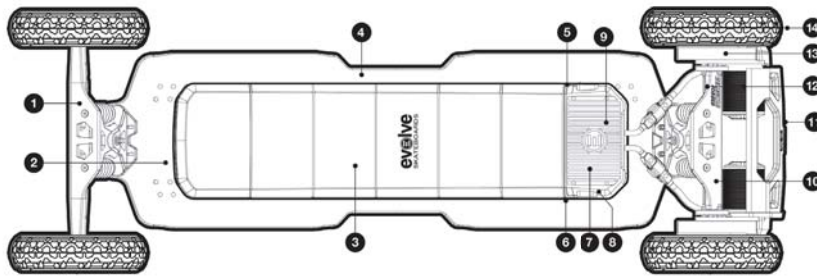


- | | |
|----------------------|------------------------|
| 1. FRONT TRUCK | 8. BRAKE LIGHTS |
| 2. HEADLIGHT | 9. PRISM STRIP PORTS |
| 3. BATTERY ENCLOSURE | 10. REAR TRUCK |
| 4. BAMBOO DECK | 11. MOTORS |
| 5. CHARGE PORT | 12. BELT |
| 6. ON/OFF BUTTON | 13. ALL TERRAIN WHEELS |
| 7. MOTOR CONTROLLER | 14. STREET WHEELS |



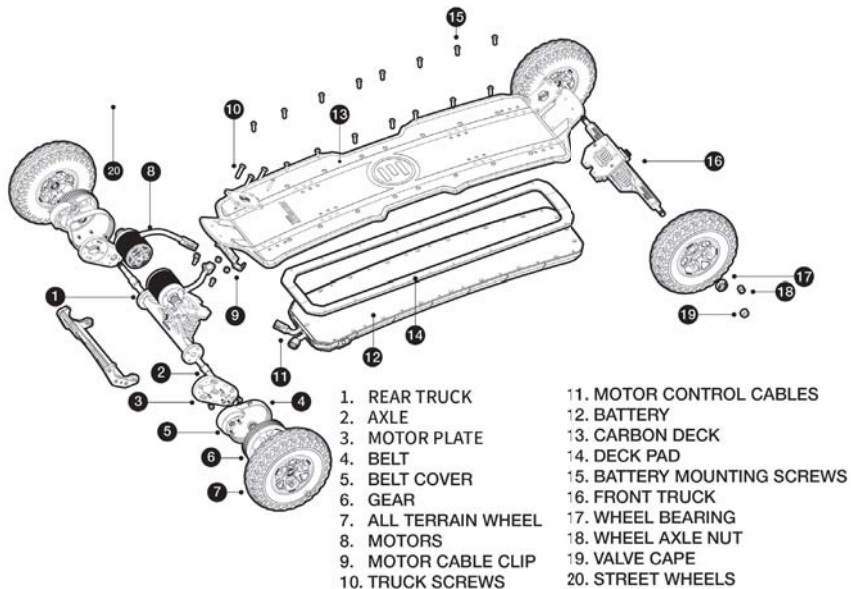
- | | |
|----------------------|-----------------------------|
| 1. REAR TRUCK | 11. MOTOR CONTROL CABLES |
| 2. AXLE | 12. BATTERY |
| 3. MOTOR PLATE | 13. BAMBOO DECK |
| 4. BELT | 14. DECK PAD |
| 5. BELT COVER | 15. BATTERY MOUNTING SCREWS |
| 6. GEAR | 16. FRONT TRUCK |
| 7. ALL TERRAIN WHEEL | 17. WHEEL BEARING |
| 8. MOTORS | 18. WHEEL AXLE NUT |
| 9. MOTOR CABLE CLIPS | 19. VALVE CAPE |
| 10. TRUCK SCREWS | 20. STREET WHEELS |

RENEGADE DIABLO

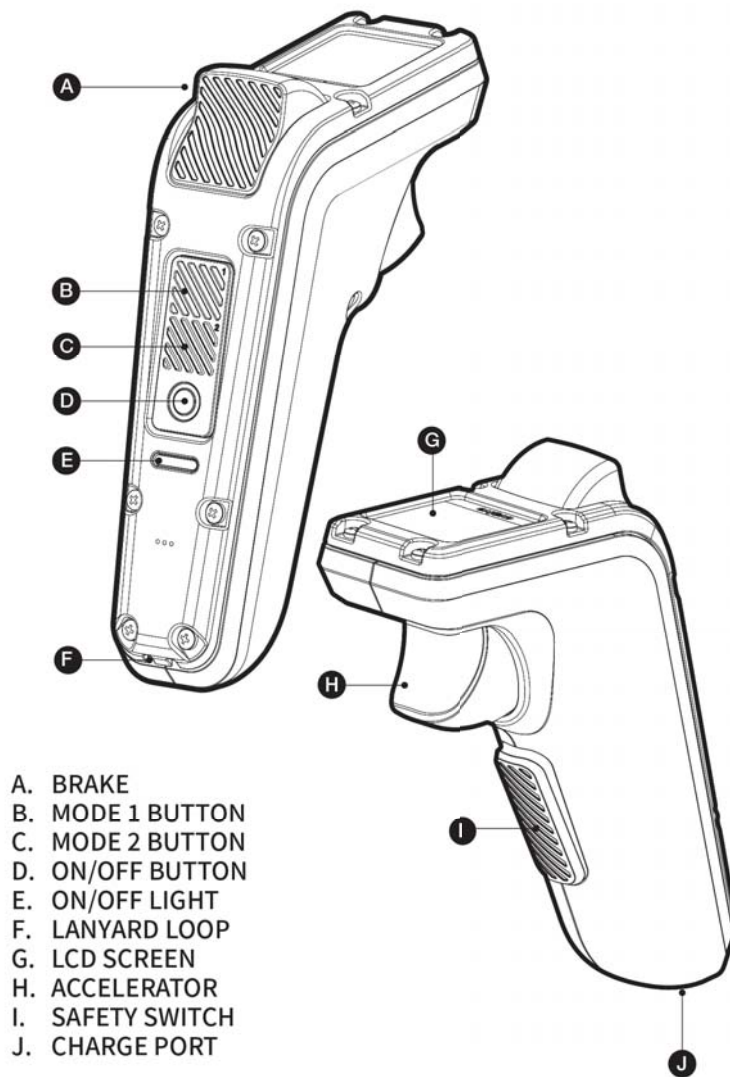


1. FRONT RENEGADE TRUCK
2. HEADLIGHT
3. BATTERY ENCLOSURE
4. CARBON DECK
5. CHARGE PORT
6. ON/OFF BUTTON
7. MOTOR CONTROLLER

8. BRAKE LIGHTS
9. PRISM STRIP PORTS
10. REAR RENEGADE TRUCK
11. FORCE BASHGUARD
12. MOTORS
13. BELT
14. ALL TERRAIN WHEELS



PHAZE REMOTE



PRE-RIDE CHECKLIST



BEFORE EACH RIDE, INSPECT YOUR BOARD AND REMOTE FOR DAMAGE. DO NOT RIDE IF DAMAGED.



CHECK BOTH THE FRONT AND REAR TRUCKS AND ALL FOUR WHEELS ARE SECURE.



BE SURE TO MAINTAIN YOUR ALL TERRAIN TYRE PRESSURE BETWEEN 45-50 PSI.



PROPERLY SECURE YOUR HELMET AND PROTECTIVE PADS.



MAKE SURE YOUR BOARD AND REMOTE BATTERIES ARE FULLY CHARGED.

See Battery Care Section for additional information about charging your board.



TURNING THE BOARD ON / OFF

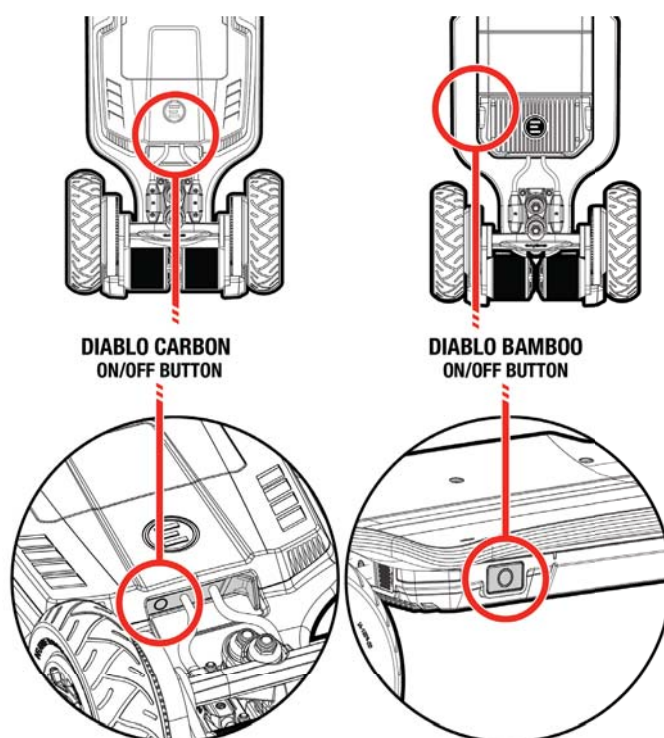
To turn the board **ON**, press the **ON/OFF** button.

The LED light on the **ON/OFF** button will illuminate indicating the board is **ON**.

To turn the board **OFF**, press the **ON/OFF** button again and the lights will turn off.

NOTE: When your board has not been used for 5 consecutive minutes, it will automatically enter Sleep Mode to conserve power and prevent unintended operation.

To reactivate your board. Pick up your Phaze Remote and press the brake trigger lightly (See Smart Start pg 37).



NOTE - Stoke and Renegade models share same ON/OFF procedure and button location as the Diablo Bamboo

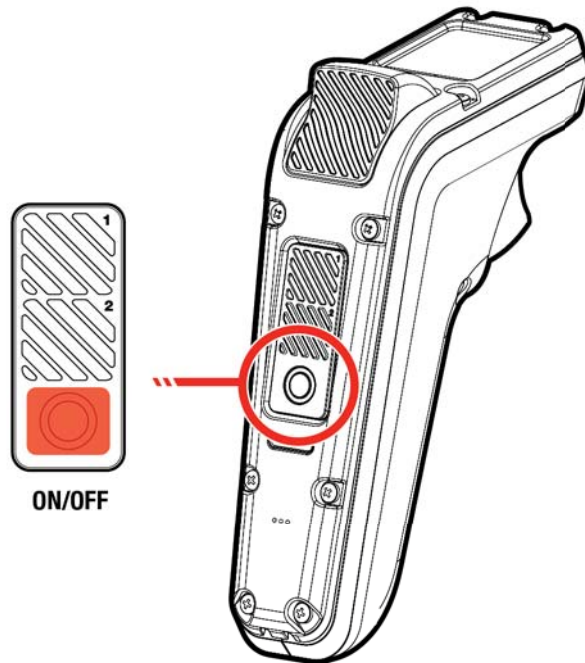


TURNING THE REMOTE ON / OFF

To turn the remote **ON**, press the **ON/OFF** button. The remote will vibrate and the **ON/OFF** light will turn blue.

Once **ON**, the LCD screen will power on and briefly display the Evolve logo and then switch to a 'Pair Remote' screen. This will instruct you how to pair your remote to your board.

To turn the remote **OFF**, press and hold the **ON/OFF** button for one second or until the screen and **ON/OFF** light turn off.



NOTE - Always turn the board on 1st and the remote on 2nd.



YOUR FIRST RIDE

The acceleration of your Evolve Skateboard may be faster than anticipated and may feel unusual at first. For your first ride, you should use the **ECO** Speed Mode and become familiar with the operation of your board by practicing starting and stopping, cornering and navigating obstacles in a safe environment away from other bicycles, pedestrians and/or vehicles. You should also pay particular attention to terrain conditions as you may approach obstacles faster than you expect.

CONTROLLING YOUR BOARD

Your Evolve Skateboard is controlled by a combination of your inputs to the board and remote. Turning and stability is dependent on the rider.

To turn the board, you must lean in the direction you wish to turn. To keep stable, it is recommended to stay relaxed with knees bent, so that your body can absorb bumps and movements created by the terrain or remote input.



Move your weight toward your front foot while accelerating and towards your rear foot while braking.

Your Evolve Skateboard comes with the Speed Limiter set at 20kph (12mph). It is highly recommend starting in **ECO MODE** and not increasing the Speed Limiter setting when learning to ride your board and to use the remote.



ONLY make small inputs to the trigger controls to avoid being thrown from your board. Start learning to ride by trying to move as slowly as possible within each Speed Mode. Use both the brakes and accelerator triggers to control your speed.

Slowly progress through the speed modes depending on your riding ability and experience.



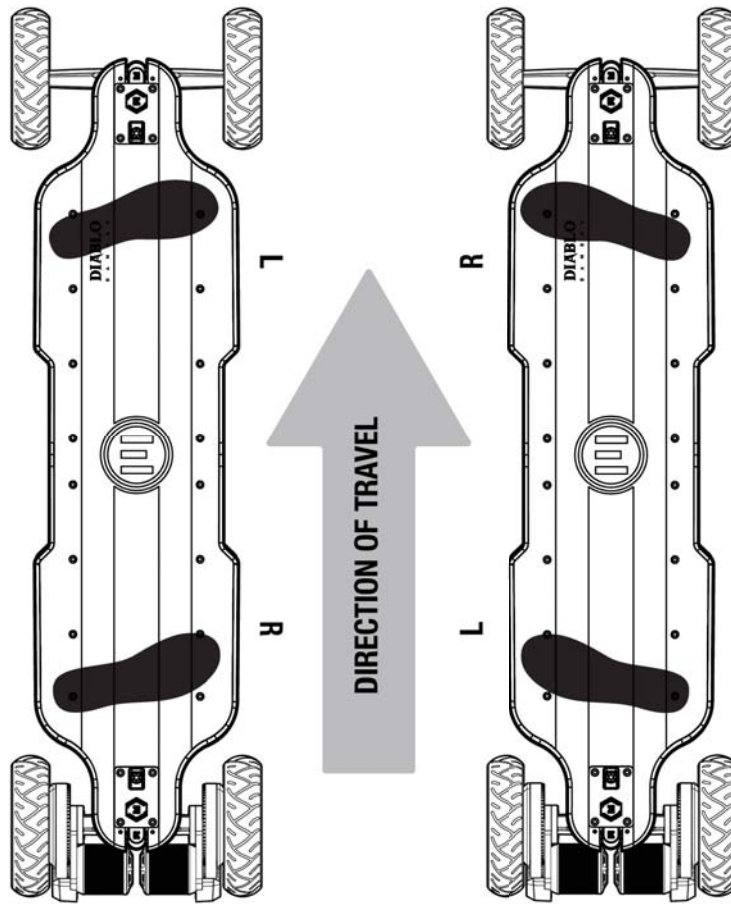
SPORT and CORSA modes are very powerful and the trigger is highly sensitive.



FOOT PLACEMENT



Foot placement varies from person to person. The closer your front foot is to the front truck, the more control you will have.



REGULAR

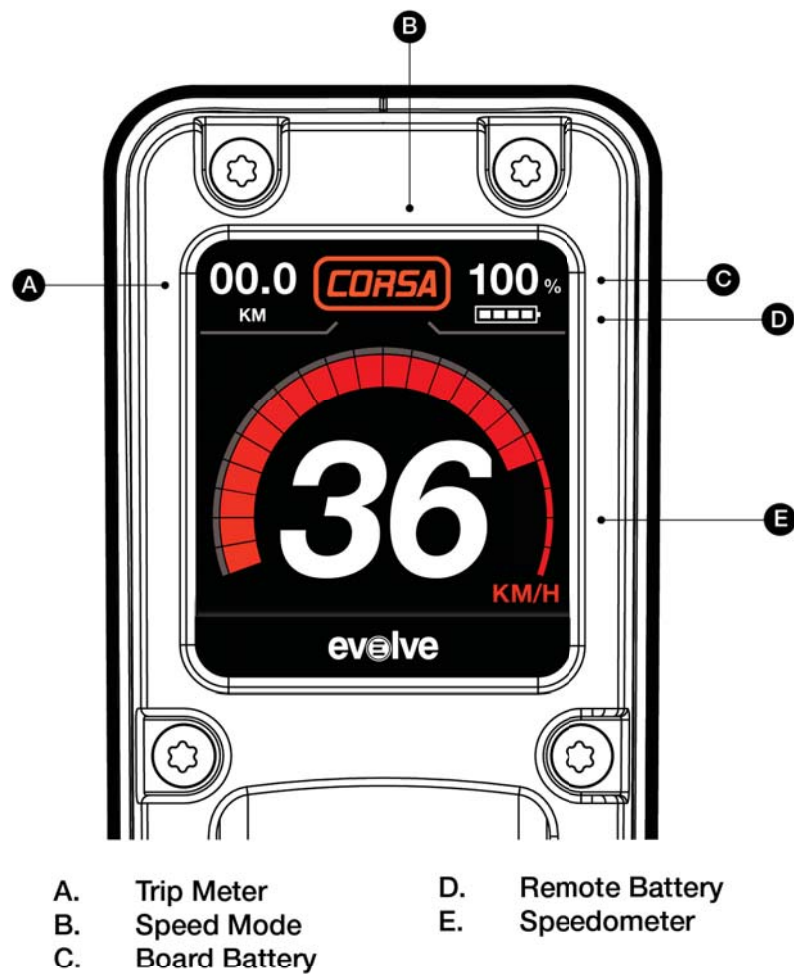
GOOFY

NOTE - DIABLO BAMBOO SHOWN



PHAZE REMOTE SCREEN

REMOTE SCREEN GUIDE





REMOTE MENU CONTROLS

To access the remote menu, turn the remote **ON**, then double tap the **ON/OFF** button.

When in the menu use **MODE 1** and **MODE 2** buttons to navigate/scroll through menu lists.

Press **ON/OFF** button to confirm selections.

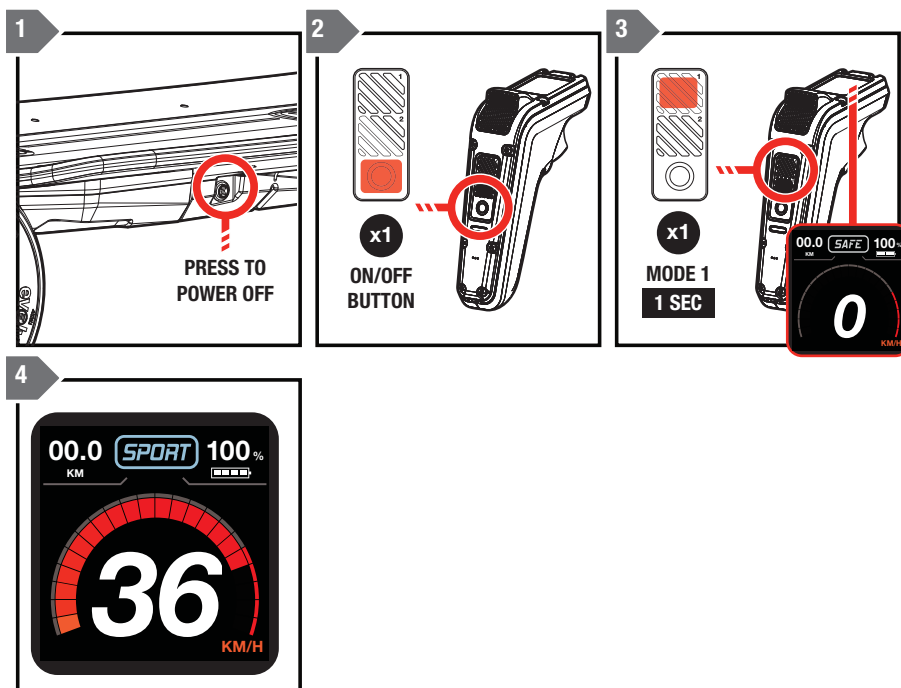
When in the menu, double-tapping the **SAFETY SWITCH** will take you back to the previous screen.





PAIRING / SYNCING THE REMOTE

1. Turn your Evolve Skateboard **ON**.
2. Turn the remote **ON**.
3. Once the LCD screen displays 'Pair Remote', follow the on-screen instructions. Press and hold the **MODE 1** button on the remote for one second or until the Bluetooth symbol begins to flash.
4. Once paired, the LCD screen will show the speed dial and be in **SAFE** mode. This means you are ready to ride!



NOTE: Once the remote and board are paired, they will be automatically paired the next time you use your board.

TIP – Make sure not to touch the accelerator or brake triggers whilst the remote is pairing to the board. Once paired, lift the wheels off the ground and pull the accelerator to check the wheels move. Then push the brake trigger to test the wheels will stop. If there are any delays in the control responses, turn both the board and remote OFF and repeat the process above to pair your board with the remote.

AUTO SAFE MODE

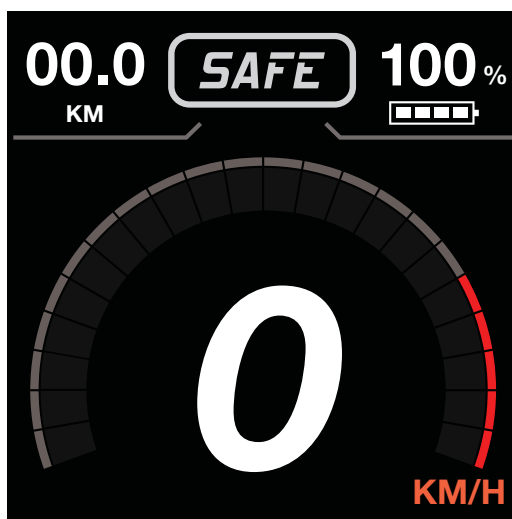
The **SAFE** Mode is designed to detect any potential issues with the control of the board.

This can relate to potential issues, including battery performance, motor controller performance and remote operational control.

1. The **SAFE** Mode will be activated if a potential issue is detected by the remote.

When **SAFE** Mode is activated, the remote will vibrate for one second and then you will have reduced acceleration and braking power. If there is a specific error detected, error messages will be displayed in the 'Warnings' screen under 'My Board' in the menu.

2. To exit the **SAFE** Mode function, press the **MODE 1** button to return to the previous speed setting you were riding.





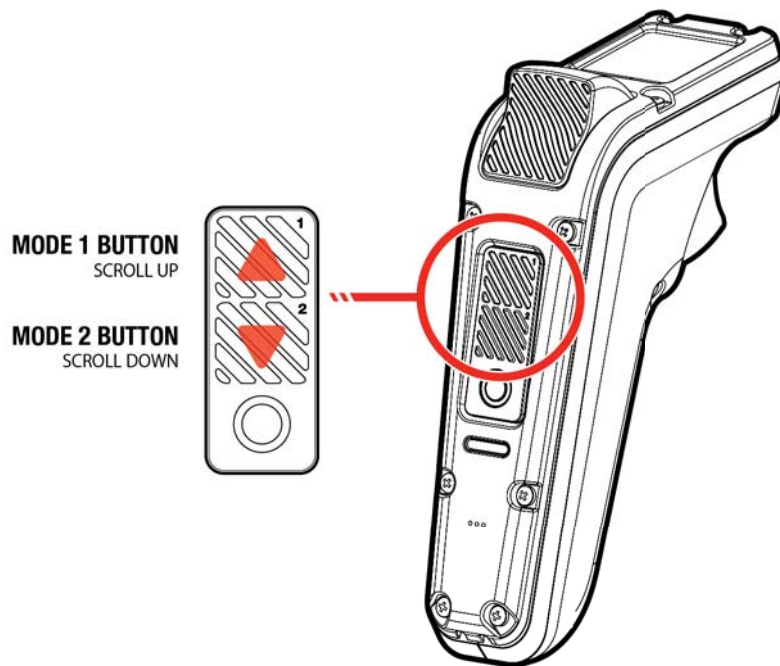
CHANGING SPEED MODES ON THE REMOTE

Once your remote is paired to your skateboard, it will be in **SAFE** Mode.

Press **MODE 1** or **MODE 2** button once, this will change the speed from **SAFE** Mode to the previous speed setting of your last ride.

Each time you press the **MODE 1** button, this will increase the speed Mode from **ECO** Mode through to **CUST** Mode one Speed Mode at a time.

Each time the **MODE 2** button is pressed, it will decrease the speed Mode from **CUST** Mode through to **ECO** Mode one Speed Mode at a time.



Each time you press the **MODE 1** or **MODE 2** button to change your speed settings the remote will vibrate one time giving warning the Speed Mode has changed.

The Speed Mode is clearly displayed at the top of your LCD screen.



ECO SPEED MODE

Economical cruising mode. Best for beginners and longest ride times.



SPORT SPEED MODE

Fast acceleration, can reach top speed, good for smaller hills and short grass.



CORSA SPEED MODE

Insane acceleration, reaches top speed quickly, will tackle any hill, dirt tracks and grassy terrain.



CUSTOM SPEED MODE

Custom Mode allows you to adjust the power level, acceleration curves and brake curves for your skateboard. This Mode is great for those wanting something different to the standard default speed modes.

CUST Mode can be adjusted via the **EXPLORE BY EVOLVE APP** which is available on the Apple App Store or on the Google Play Store.

*TIP - Use the Speed Modes as you would gears on a bike. Cycle back down from **SPORT** or **CORSA** according to the riding situation. For example, select **SPORT** or **CORSA** Mode for an approaching hill, then cycle back down to **SPORT** or **ECO** Mode once you have reached the top of the hill. **CUSTOM** Mode is your individual power curve preference, whether its low acceleration or high acceleration, soft or hard braking, this is your go to Mode that best suits your riding style.*



SAFETY SWITCH

The **SAFETY SWITCH** (AKA **DEADMAN** switch) is located under the accelerator trigger. You must hold the **SAFETY SWITCH** using your 2nd and/or 3rd finger as you engage the accelerator trigger to begin riding. The Speed Mode display on the screen will turn a solid colour once you press the **SAFETY SWITCH**.



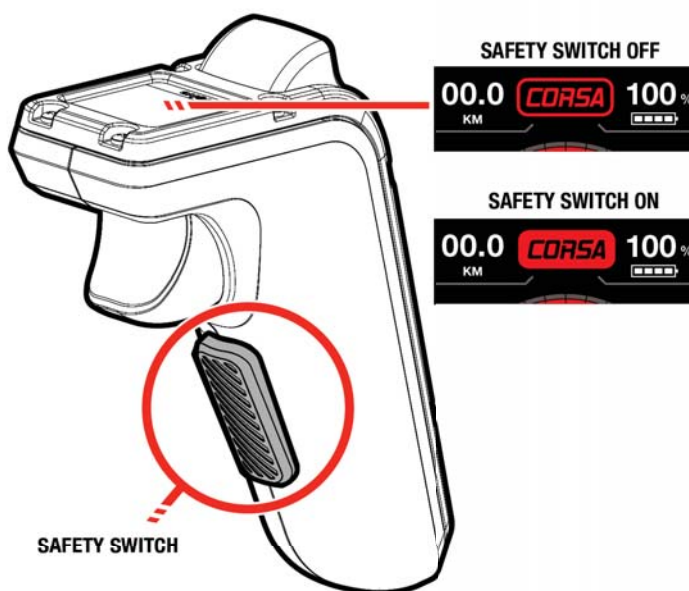
If you do not press the safety switch in as you engage the accelerator trigger, the board will not move.

Once you begin moving and reach speeds of 3-5 kph (2-3 mph) or above, you will be able to accelerate freely without engaging the **SAFETY SWITCH**.

When you come to a stop or reach 0 kph, the need for the **SAFETY SWITCH** reactivates. You must hold in the **SAFETY SWITCH** the next time you wish to use the accelerator trigger again.

You do not need to hold in the **SAFETY SWITCH** to activate the brake.

The **SAFETY SWITCH** can be disabled or re-enabled by going to the **OPTIONS** menu and changing **DEADMAN** to **OFF** or **ON**.



HOW TO ACCELERATE

With the **SAFETY SWITCH** depressed, pull the accelerator trigger slowly and you will begin to move forward. The further you pull the trigger in, the faster you will go.

Once over 5kph (3 mph), then you can release the safety switch.



Have your weight positioned on the front foot when you accelerate, this stops the board flying out from under your feet!

ACCELERATOR



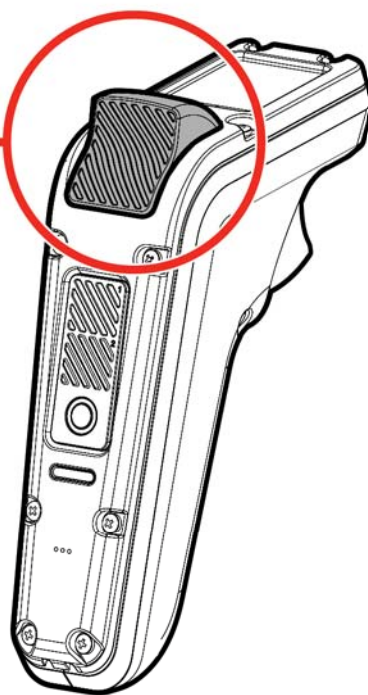
HOW TO BRAKE

Push the brake trigger forward SLOWLY and you will begin to slow down. The further you push the trigger, the stronger the braking will be.



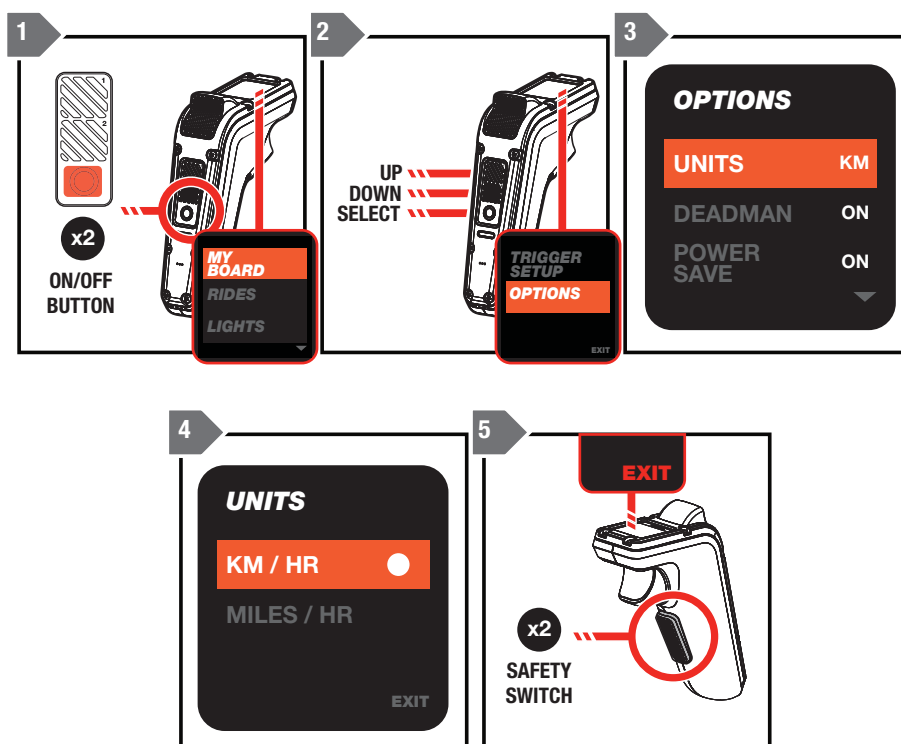
Avoid keeping the thumb on the brake trigger as you ride. The brake trigger takes precedence over all other remote functions and if pressed will cut acceleration, prevent acceleration or changing Modes and will not allow you to turn off the remote.

BRAKE



SELECT KPH OR MPH

1. Double-tap the **ON/OFF** button to access the menu..
2. Scroll by pressing the Mode buttons until you reach 'Options', then press the **ON/OFF** button to confirm selection.
3. Scroll by pressing the Mode buttons until you reach 'Units', then press the **ON/OFF** button to confirm selection.
4. Scroll by pressing the Mode buttons to select the unit of measurement for your region (kph or mph). Press the **ON/OFF** button to confirm selection. A white circle will appear next to the confirmed selection.
5. Double tap the **SAFETY SWITCH** to go back to the previous menu screen or scroll to the 'EXIT' selection and press the **ON/OFF** button to return to the default ride screen.





SPEED LIMITER

WARNING

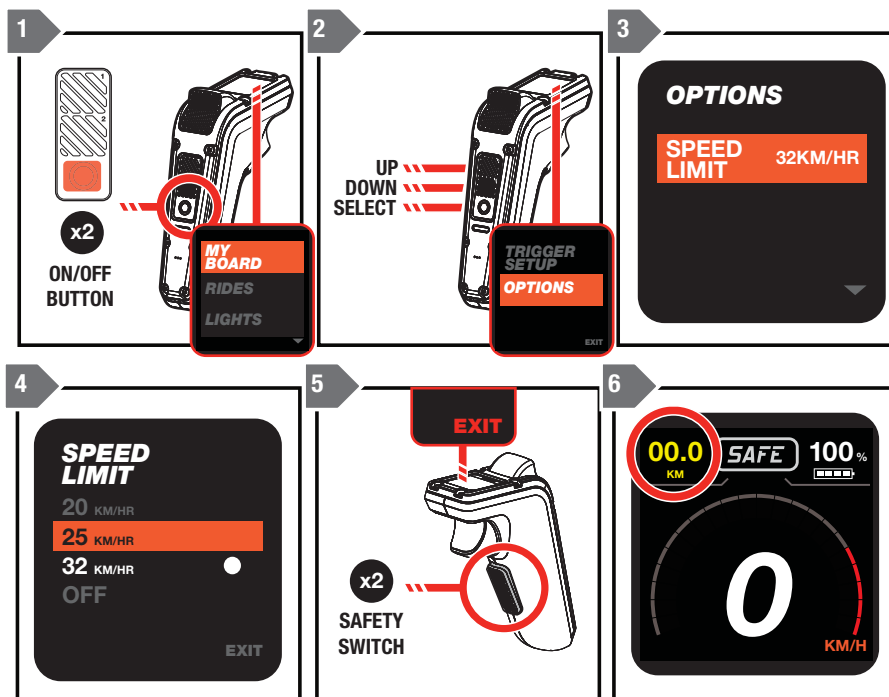
To prevent serious injury or death, always ride within your limits and the limits of your Evolve Skateboard. **ALWAYS** ride your board at speeds at which you are comfortable without power or brakes. Your board can lose power or brakes during your ride if the available charge in the batteries in your board/remote is too low or in extenuating circumstances.

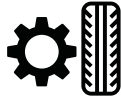
The Speed Limiter will set the maximum top speeds to comply with the specific laws or regulations in the area you intend to ride and should also be used to assist you with riding within your limits. Your Evolve Skateboard has a maximum speed of 50 kph (31mph).

Your Evolve Skateboard comes with the Speed Limiter set at 20 kph (12 mph). Power and torque are still the same when the Speed Limiter is activated, however the top speed is restricted to the setting you choose.

To access the speed limiter:

1. Double-tap the **ON/OFF** button to access the menu.
2. Scroll by pressing the Mode buttons to reach 'Options' then press the **ON/OFF** button to confirm selection.
3. Scroll by pressing the Mode buttons to 'Speed Limit' press the **ON/OFF** button to confirm selection.
4. Scroll by pressing the Mode buttons to set the desired speed limit – 32 kph (20 mph), 25 kph (16 mph), 20 kph (12 mph) or OFF. Then press the **ON/OFF** button to confirm selection. A white circle will appear next to the confirmed selection.
5. Double tap the **SAFETY SWITCH** to go back to the previous menu screen or scroll down to 'Exit' and press the **ON/OFF** button to return to the default ride screen.
6. If the Speed Limiter is activated the Trip Meter will be highlighted in yellow on the Ride Screen.





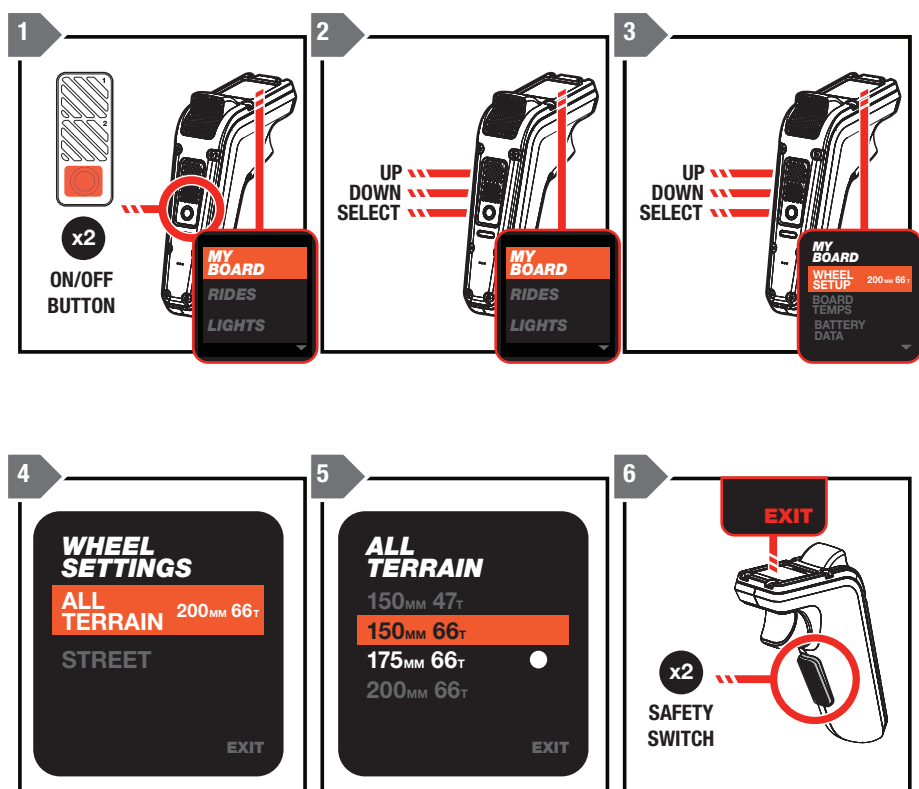
CHANGING THE WHEEL & GEAR SETTING

Be sure to select the wheel and gear combination you are riding with, as this will give you an accurate speed and distance display on your remote.

To adjust the wheel and gear setting,

1. Double-tap the **ON/OFF** button to access the menu.
2. Scroll by pressing the Mode buttons to select 'My Board', then press the **ON/OFF** button to confirm your selection.
3. Scroll by pressing the Mode buttons to select 'Wheel Setup', then press the **ON/OFF** button to confirm your selection. The screen will display All Terrain Wheel/Gear Sizes and Street Wheel/Gear Sizes.
4. Confirm you are using either All Terrain wheels or Street wheels, then scroll to your selection by pressing either Mode buttons and then press the **ON/OFF** button to confirm selection.
5. Scroll through to the correct wheel and gear size by pressing the Mode buttons. Press the **ON/OFF** button to select correct wheel and gear option. A white circle will appear next to the confirmed selection.
6. Double tap the **SAFETY SWITCH** to go back to the previous menu screen or scroll to the 'EXIT' selection and press the **ON/OFF** button to return to the default ride screen.

NOTE : The street boards all come with 32T gear as standard. The AT boards come with 66T gear as standard. Other gear sizes and wheels are available on Evolve websites.





TRIP METER

The Trip Meter will show your distance travelled for your current ride only in the top left corner of the LCD screen.

Once you turn your board OFF, the Trip Meter will reset to 0 distance.



OTHER REMOTE OPERATION FUNCTIONS

- If you accidentally press both the accelerator trigger and brake trigger at the same time, the brake function will override the accelerator input.
- If you hold down both the accelerator and the brake triggers and then release the brake trigger, your board will not accelerate.
- As you are riding and holding down the accelerator or brake trigger, you will not be able to change speed Modes or turn the remote OFF until you release the triggers.
- When the Safety Switch is enabled and you kick push the skateboard to start, you can avoid pressing in the Safety Switch, this is also good for battery efficiency.
- Get to know the vibration warnings on your remote, these can be useful during your ride.
- The LCD screen is much easier to see when there is less direct sunlight.
- After 5 minutes of no use, the Phaze remote will enter a sleep mode to save on battery life. While in this mode no controls will function. To reactive the remote and your board, press the brake trigger.
- Avoid riding with your thumb positioned on the brake trigger as you are accelerating, this may cancel out the accelerator when you are not ready.



POWER SAVE FUNCTION

To maximise the battery run time for your remote, tilt at a low angle and the Power Save function will turn the remote screen off. Power Save will automatically activate one minute after the remote is turned **ON**.

When the rider lifts the remote to a more level position, it will turn back **ON**.

To deactivate/reactivate this function, go into the 'Options' section of the remote menu and change the settings for 'Power Save'.



SLEEP MODE

When your board has not been used for 5 consecutive minutes, it will automatically enter Sleep Mode to conserve power and prevent unintended operation.

Your board is able to stay in Sleep Mode for up to 3 hours. At 3 hours the board will power off. Smart Start function will not be available and the board will need to be turned off and then back on through the **ON/OFF** button.



SMART START

When your Evolve Skateboard is turned on it has the ability to enter an inactive state (Sleep Mode) that can be remotely turned on by your Phaze remote.

After 5 minutes of no use, your board and Phaze remote will enter Sleep Mode to save on battery life. While in this mode no controls will function.

To start your board and remote, press the brake trigger. If lights are connected they will flash and you are ready to ride.

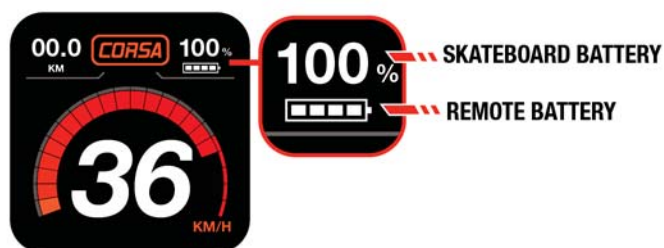
NOTE : When you reactivate your board it will be in **SAFE** mode. To exit the **SAFE** Mode function, press the **Mode 1** button to return the previous speed setting you were riding.



BATTERY INDICATOR DISPLAY

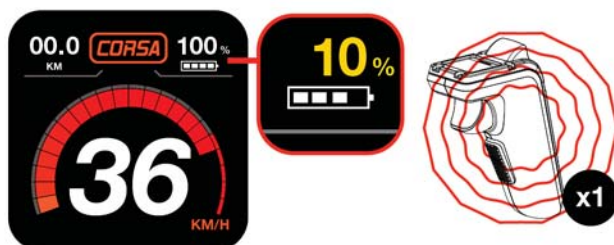
When the remote is connected to the board, it will display how much battery power is remaining in the board and remote battery in real time.

The board battery level is displayed as a percentage symbol (%) in the top right-hand corner of the LCD screen and the remote battery level is displayed in a bar below.

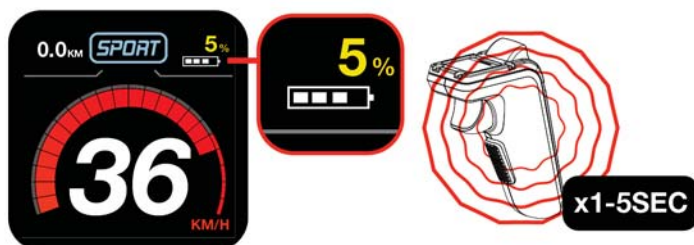


There are low battery warnings set on the remote that provide you with notice of when to expect the skateboard to run out of power.

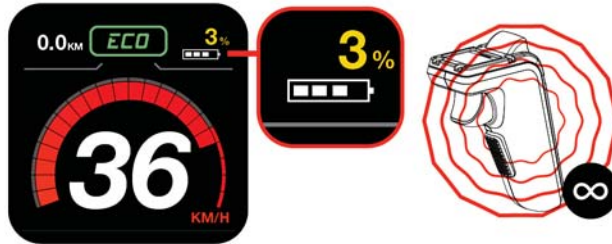
1. At 10% the remote will vibrate quickly one time. If lights are connected they will change to an amber colour.



2. At 5% the remote will vibrate once every 5 seconds and go to **SPORT** mode. If lights are connected they will pulse an amber colour.



3. At 3% the remote will vibrate for 5 seconds with a brief pause then continue to vibrate and go to **ECO** mode. If lights are connected they will will flash an amber colour



4. At 0% the remote will continue to vibrate and soon after the board will turn off. The remote will then disconnect from the board and the board will be in 'Free Roll' mode.



Reducing the Speed Settings at 5% battery is to prevent the board from turning OFF suddenly when the battery is very low on voltage. This protects both the rider and battery.

TIP - As you ride your Evolve Skateboard and use your remote, the skateboard battery meter and remote battery meter will slowly deplete. If you ride up hills, accelerate heavily and ride over grass you should expect the battery to deplete faster than if you were riding on flat, smooth surfaces. For the longest ride times, ride holding a set speed and avoid start/stop riding. See the Evolve YouTube channel for more tips.

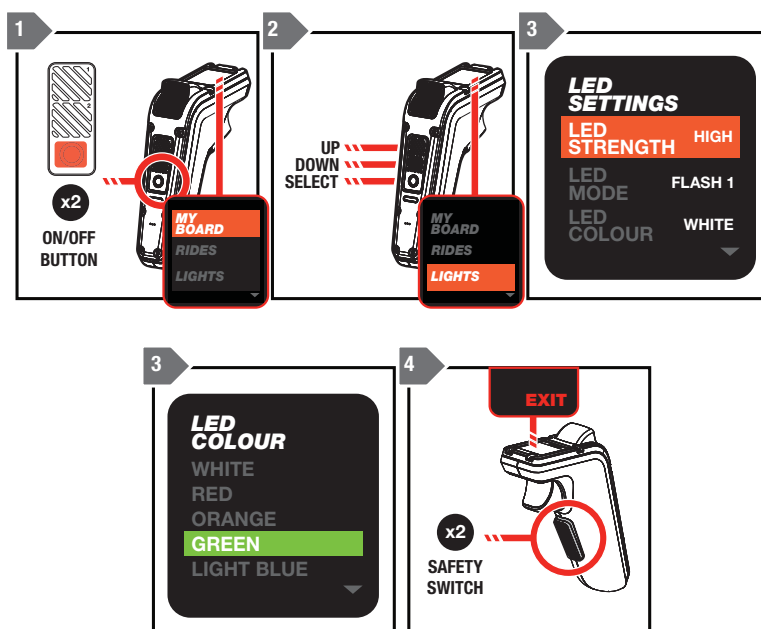
LED SETTINGS

Evolve skateboards have built in LED lights that can be colour customised and synced to the brake trigger to show a red light when applying the brake.

Note: Additional lights can be purchased for boards compatible with the E-FOC LED Prism Strips (sold separately).

To customise the LED colours and mode:

1. Double-tap the **ON/OFF** button to access the menu.
2. Scroll by pressing the Mode buttons to 'Lights', then press the **ON/OFF** button to confirm selection.
3. Scroll through the LED options to select your preference, then press the **ON/OFF** button to confirm selection.
4. Double tap the **SAFETY SWITCH** to go back to the previous menu screen or scroll to the 'EXIT' selection and press the **ON/OFF** button to return to the default ride screen.

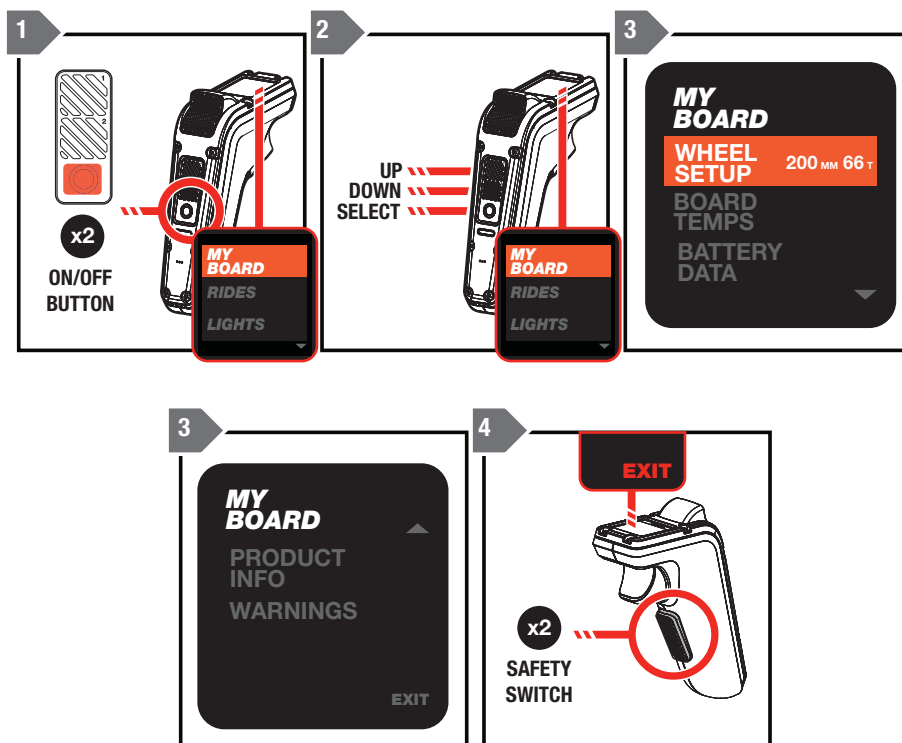




MY BOARD

Here is where you will find specific information and data regarding your skateboard such as board temperatures, battery cell readings, total ride hours, warnings and firmware details:

1. Double-tap the **ON/OFF** button to access the menu.
2. Scroll by pressing the Mode buttons to 'My Board', and then press the **ON/OFF** button to confirm your selection.
3. Scroll by using the Mode buttons and press the **ON/OFF** button for the selection you wish to view.
4. Double tap the **SAFETY SWITCH** to go back to the previous menu screen or scroll to the 'EXIT' selection and press the **ON/OFF** button to return to the default ride screen.





TRIGGER CALIBRATION

If you experience symptoms such as difficulty changing Speed Modes, you are unable to turn the remote off before the board or you can brake but not accelerate, this is usually caused by movement of the trigger magnets from their original positions within the remote case.

In most cases, the Phaze remote will detect this automatically and prompt you to perform a trigger calibration.

1. Ensure the skateboard is turned off. Press the **ON/OFF BUTTON** on the remote.
2. From the default screen 'Pair Remote' screen, double click the **ON/OFF BUTTON** to access the menu.
3. Scroll by pressing the **MODE BUTTONS** to 'Trigger Setup' and press the **ON/OFF BUTTON** to confirm selection.
4. Follow to on screen prompts to calibrate the triggers.
5. The remote will now be in the pairing screen.

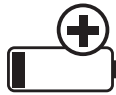


ALWAYS ensure the skateboard is turned off before performing a trigger calibration.



Do not attempt to perform a trigger calibration while riding or standing on the board.





BATTERY CARE

⚠ WARNING

Fire and Explosion hazards. Only use original Evolve Skateboards battery packs. Never use any other battery pack with your board.

To prevent death, serious injury or property damage:

- **Ensure your board is turned off before charging. Ensure the board is not in sleep mode.**
- **Do not leave your battery unattended while charging.**
- **If the battery has any issue when charging, stop charging and contact Evolve Skateboards immediately.**
- **Battery leakage may occur under extreme usage or temperature conditions. Avoid contact with skin and eyes. Battery liquid is caustic and could cause chemical burns. If battery liquid comes in contact with skin, wash quickly with soap and water. If the liquid contacts your eyes, immediately flush eyes with water for a minimum of 15 minutes and seek medical attention.**
- **The battery pack may give off vapours if it becomes damaged or is used incorrectly. Ensure the area is well ventilated and seek medical attention should you experience any adverse effects. The vapours may irritate the respiratory system.**
- **Do not submerge the battery pack in liquid of any kind. ALWAYS dispose of your battery if it gets wet or is exposed to water.**
- **Do not touch the terminals on your battery pack. If the battery pack is not installed in your board, keep it away from paper clips, coins, keys, nails, screws or other small metal objects that could make a connection from one terminal to another. A short circuit between the battery terminals may cause burns or a fire.**
- **Battery charging times may increase with battery age and usage.**

- **Do not puncture or crush the battery pack. Battery packs must not be subjected to mechanical shock. If battery is dropped or struck with another object, the battery may be damaged.**
- **Do not use the battery pack if it shows visible damage.**
- **Protect the battery pack against heat e.g., temperature >60° Celsius (140 °F), fire and immersing into water.**
- **Do not open the battery pack. There is a risk of short circuiting. Opening the battery pack voids any and all warranty claims.**
- **Do not place the charger or the battery near flammable materials. Ensure the battery is completely dry and placed on a fireproof surface before charging.**
- **Keep the battery pack away from children.**
- **Boards must not be dropped or subjected to other mechanical shocks. There is a risk of damage to the batteries.**



CHARGING SAFETY

⚠️ WARNING

- Do not leave your battery unattended while charging.
- Always allow board to cool for 30 minutes before charging. Do not connect your board to the charger until the battery pack has had a chance to cool to an allowable charging temperature.
- Only charge the battery indoors in dry spaces that are not excessively hot or cold (within 12°Celsius / 53.6°F of room temperature).
- Ensure there is no dirt, debris or flammable items nearby when using the charger.
- The charger will automatically stop charging once the battery reaches its full capacity.
- The light on the charger will be red when the battery is charging and will turn green when charging has finished.
- Avoid leaving the charger plugged into the board when the battery is fully charged.
- Do not charge the battery if you notice the battery is damaged, excessively hot, leaking, smells, or is discoloured.
- Charging the battery should take approximately 3.5 - 4 hours if the battery is mostly empty.
- Only grab the charger by the plug and not the cable when plugging and unplugging from the wall.
- Store your board indoors in a dry space, away from heat or flame sources and out of direct sunlight.
- The charger may get hot, up to 74°Celsius (>165°F) when charging. Use caution and avoid touching the body of the charger.
- Only charge your Skateboard with its dedicated charger. Use with other types of batteries may burst causing personal injury and damage. The battery pack voltage must match the battery pack charging voltage of the charger. Otherwise, there is risk of fire and explosion.
- Do not expose the charger to rain or wet conditions. If water enters a charger, there is a risk of electric shock.
- Only use the original Skateboard's battery charger supplied with your board. Bypassing the battery charger or the use of a non-approved battery charger can lead to death or serious injury.
- Keep battery charger clean. Contamination can lead to the risk of an electric

shock. Clean only when charger is unplugged with the use of a damp cloth (water).

- Always check the charger, cable and plug before use. Stop using the charger if you discover any damage. Do not open the charger. Damaged chargers, cables and plugs increase the risk of electric shock.
- Do not operate the charger on an easily ignited surface (e.g. paper, textiles, etc.) or in a flammable environment. There is a risk of fire when the charger generates heat during the charging process.
- The battery may give off vapours if it is damaged or is used incorrectly. Ensure the charging area is well ventilated and seek medical attention should you experience any adverse effects. These vapours may irritate your respiratory tract.
- Keep the battery charger away from children. Do not allow children to play with charger.
- Persons who are not capable of safely operating the charger because of their physical, sensory or mental limitations, or because of their lack of experience or knowledge, may only use this charger under supervision or after having been instructed by a responsible person.
- Note the household voltage. The voltage of the power supply must correspond to the specifications given on the battery charger nameplate.



CHARGING THE BOARD



ALWAYS charge your Evolve Skateboard battery before use to maintain the best battery health.

Connect power to the charger by inserting the charger plug into an outlet.

Ensure your board is turned off.

Remove the rubber grommet from the charger port on the board and insert the charger plug.

The charger will show:



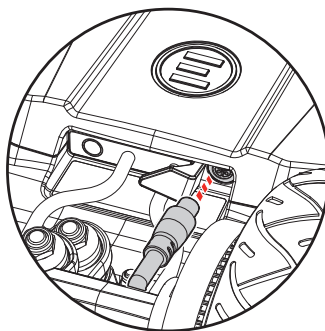
GREEN LIGHT = FULLY CHARGED/NOT PLUGGED IN



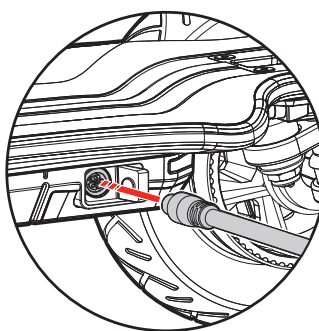
RED LIGHT = CHARGING

Once the board is fully charged (the light on the charger will turn green) remove the charger plug from the board, re-install the rubber grommet on the board and remove the plug from the outlet.

**DIABLO
CARBON**



**DIABLO
BAMBOO**



NOTE - Renegade and Stoke models share same charging port locations as the Diablo Bamboo shown.

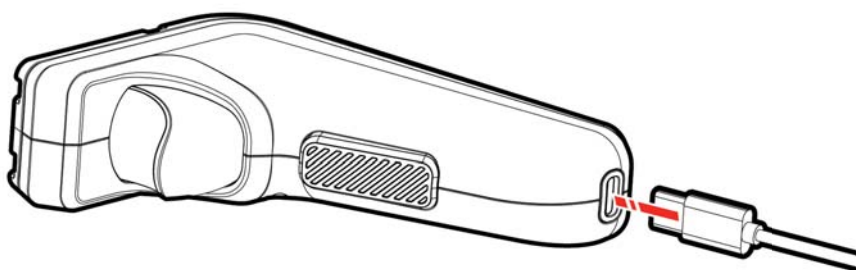


CHARGING THE REMOTE




ALWAYS charge your Phaze remote **BEFORE** your first ride. The remote may not come fully charged.

To charge, insert the USB C plug of the charge cable carefully into the charge port of the remote, and the USB plug end into a suitable USB port.



The remote will show:

 **GREEN LIGHT = FULLY CHARGED**

 **RED LIGHT = CHARGING**

Once the remote is fully charged remove the USB C plug from the remote.



HEAT PROTECTION



If your board ever experiences operational issues, please contact your local Evolve Skateboards support team for assistance.

To protect your Evolve Skateboard electronics system, the software is designed to reduce the board's current draw during excessive use. This forces the board to cool down and prevents the rider from continuing to put stress on the electrics.

If this elevated temperatures occur, the below warning messages will be displayed on the remote.

LEVEL 1.

Your remote will display a HEAT warning and vibrate once every 5 seconds. If riding in **CORSA** or **CUSTOM** mode you will be reduced down to **SPORT** mode. All other modes remain the same.



LEVEL 2.

Your remote will display a HEAT warning and vibrate once every second. If riding in **CORSA** or **CUSTOM** mode you will be reduced down to **ECO** mode.



LEVEL 3. Your remote will display a HEAT warning. There will be continuous vibration of the remote and the board will be reduced to **SAFE** mode.



If the heat protections are triggered it is best to let the board cool down by either resting or riding economically until the board cools down to a lower temperature.



OVER CURRENT PROTECTION

To protect the electronic system, the firmware is designed to limit current draw when excessive draw is detected. If these limits are reached, the software allows for 8 seconds of operation at the maximum current draw limit. After 8 seconds the board will then reduce the boards power out put to SPORT mode.



There is an Over Current 'Pre Warning' that alerts the user during use and forces the remote to vibrate for 4 seconds constantly before the board reduces power back to SPORT Mode.



Once the accelerator trigger is let go and reapplied the speed mode will automatically change back to CORSA Mode.





ERROR CODES

If your board detects an operational issue, an error message will be displayed in the 'Warnings' section of the 'My Board' screen and a Yellow Spanner will show on the default ride screen.

BATTERY FAULT - This error code may be displayed if there is an error in communication between the BMS and motor controller and/or if a battery cell is failing. In the event this occurs, the board will limit the Speed Mode to **ECO** to reduce the risk of damage to the battery.



If your board ever experiences operational issues, please contact your local Evolve Skateboards support team for assistance.



STORING YOUR BOARD

Always store your Evolve Skateboard indoors in a dry space, away from heat or flame sources and out of direct sunlight.

Ensure your board is turned off and not in sleep mode.

- Hot or cold temperatures can permanently affect or damage your battery.
 - Do not leave your board in a hot car, a hot environment or exposed to other factors that may expose your board to high heat.
 - Do not leave your board outside or an environment where freezing temperatures may occur.
- If you will not be using your battery for a prolonged period of 1 MONTH OR MORE, it is recommended to store your board BETWEEN 40 AND 50% charge. It is recommended to check your battery every 6 weeks and top up to between 40 and 50% charge if required.

NOTICE

If your battery is fully charged and not used for a period of months, there may be a permanent loss of total battery capacity. If the battery is stored near depleted for a prolonged period it may drop to an unrecoverable voltage and be permanently damaged.



TROUBLESHOOTING

This manual is not intended as a comprehensive use, service, repair or maintenance manual. For detailed information regarding tips, maintenance and troubleshooting, please visit **EVOLVESKATEBOARDS.COM**. Here you will find links to your local distributor for detailed information.

Please contact your local distributor for ALL maintenance and troubleshooting questions. You may also find many video tutorials on your distributor's website.



MAINTAINING YOUR BOARD



You are responsible for all maintenance relating to your board. Failure of any part due to lack of maintenance is not covered by the warranty.

- Always clean your bearings for best roll and quietest/smoothest ride. Bearings will get dirty and affect ride quality. This may reduce battery performance and possibly result in bearing failure.
- Always check all screws/nuts throughout the skateboard are tight (truck nuts, wheel nuts, etc.) before each ride.
- Rotate the wheels on the skateboard, as you would do so with any longboard skateboard, as the drive wheels will wear the fastest.
- Regularly clean & check the belt and drive gear for any damage. Replace if necessary.
- Clean your board from dust and dirt so its looks and rides as new at all times. Only use a damp & dry cloth to clean. Cleaning products may contain solvents that can damage your board.
- Be sure to maintain your All Terrain tyre pressure between 45-50 PSI. Check your tyre pressure periodically. If the tyre pressure is lower, your tyres will need to be replaced sooner and your ride times will reduced due to the increase in friction from the tyres.



DISPOSAL

When your Evolve Skateboard is no longer usable, dispose of your board according to state and federal regulations. The motors, battery, accessories and packaging should be disposed of in accordance with these regulations. State/Province regulations regarding electronics disposal vary so it is important you find out the rules in your location.

NOTE – Do not dispose of boards and their components with household waste.

WARRANTY

THIS BOARD IS COVERED BY A 12 MONTH MANUFACTURERS WARRANTY (TIME PERIOD MAY BE DIFFERENT IN OTHER COUNTRIES. PLEASE CONSULT THE WEBSITE OR SELLER YOU PURCHASED FROM) THAT COVERS DEFECTS IN WORKMANSHIP AND MATERIAL. THIS DOES NOT COVER MISUSE, PERISHABLE ITEMS (SUCH AS WHEELS, TYRES, TUBES, BEARINGS, BELTS), NEGLIGENCE, ABUSE, ACCIDENT OR WATER DAMAGE AND SHIPPING DAMAGE.

FOR WARRANTY CLAIMS AND DETAILS, PLEASE VISIT YOUR LOCAL DISTRIBUTOR WEBSITE FOR INSTRUCTIONS. PLEASE KEEP YOUR SHIPPING BOX IN CASE THE BOARD EVER NEEDS TO BE RETURNED.

FCC

This device complies with part 15 of the FCC Rules. Operation is subject to the following two conditions:

1. This device may not cause harmful interference, and
2. This device must accept any interference received, including interference that may cause undesired operation.

Please note that changes or modifications not expressly approved by the party responsible for compliance could void the user's authority to operate the equipment.

This equipment has been tested and found to comply with the limits for a Class B digital device, pursuant to part 15 of the FCC Rules. These limits are designed to provide reasonable protection against harmful interference in a residential installation. This equipment generates, uses and can radiate radio frequency energy and, if not installed and used in accordance with the instructions, may cause harmful interference to radio communications. However, there is no guarantee that interference will not occur in a particular installation. If this equipment does cause harmful interference to radio or television reception, which can be determined by turning the equipment off and on, the user is encouraged to try to correct the interference by one or more of the following measures:

- Reorient or relocate the receiving antenna.
- Increase the separation between the equipment and receiver.
- Connect the equipment into an outlet on a circuit different from that to which the receiver is connected.
- Consult the dealer or an experienced radio/TV technician for help.

This equipment complies with radio frequency exposure limits set forth by the FCC for an uncontrolled environment.

This equipment should be installed and operated with a minimum distance of 5mm between the device and the user or bystanders.

This device must not be co-located or operating in conjunction with any other antenna or transmitter.

CALIFORNIA PROPOSITION 65

WARNING: THIS PRODUCT CAN EXPOSE YOU TO CHEMICALS INCLUDING CHROMIUM, WHICH IS KNOWN TO THE STATE OF CALIFORNIA TO CAUSE CANCER. FOR MORE INFORMATION GO TO WWW.P65WARNINGS.CA.GOV.

evolve
SKATEBOARDS