



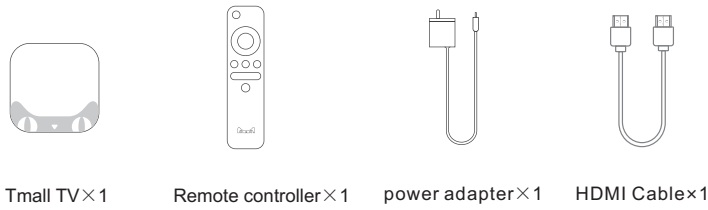
Name : M16I 说明书  
Dimension : 125\*125  
Version : V2.0  
Date : 2016.04.08

材质：105g双铜表面过哑油（参考样品）  
尺寸：125X125MM  
工艺：四色印刷

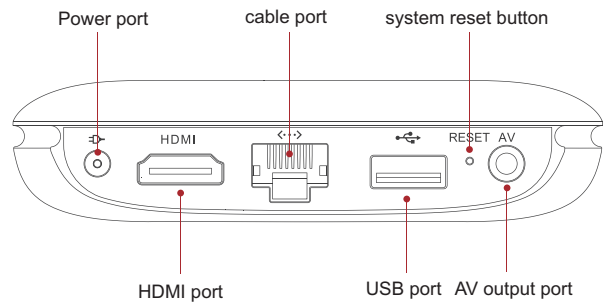


### What's included

#### Packing details



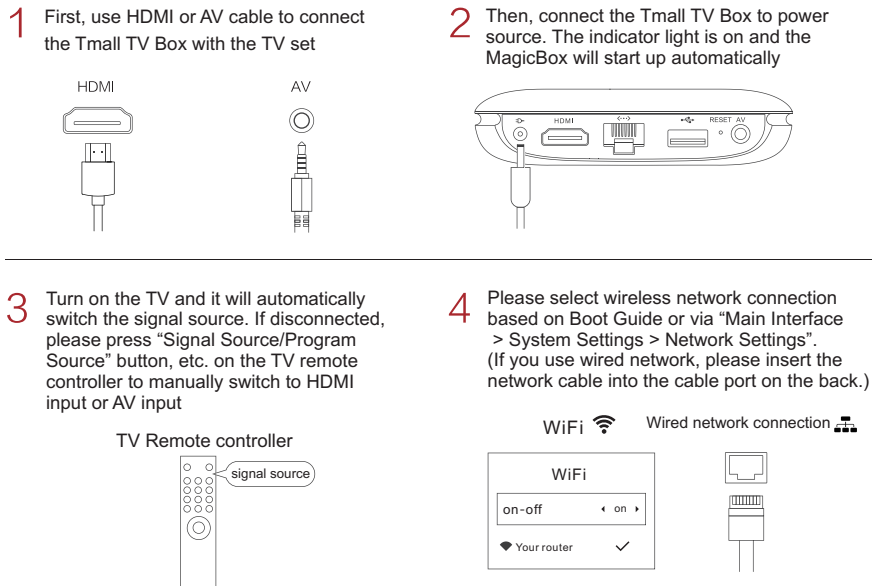
#### Rear port Instructions



\*System reset method: (1)disconnect the power, use a needle to insert into the tiny hole on the back of the box, and press and hold the Reset button; (2)connect it to the power source and keep pressing the button till the indicator light on the box starts to flash; (3)then you can release the button to restore factory settings of the system; (4)please make sure the power is on during this process until the system restarts and enters the main interface.

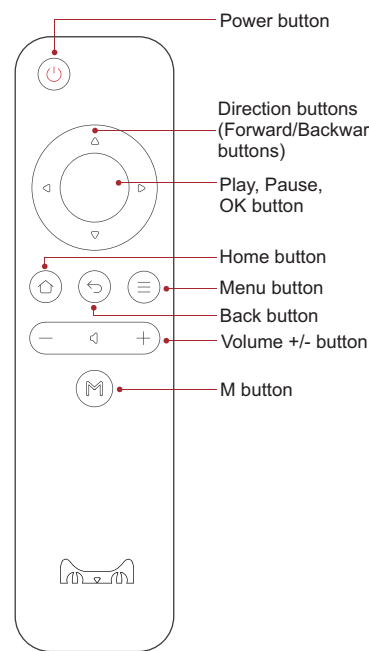
### Attention Please! Must Read Before Starting-up

Dear users, the process is quite simple. Please take it easy.



And now, just wait a moment till the boot animation finishes to start your wonderful watching experience!

### Get to Know Your Remoter Controller



#### Buttons Instructions

Shutdown	Long press the Power button
Standby/Wakeup	Short press the Power button
Cursor Movement	Press Direction button
Function Selection	Press OK button
Volume Control	Press Volume +/- button
Forward/Backward	Press Left/Right buttons
Return to Previous Interface	Press Back button
Return to Main Interface	Press Home button
Call Menu Window	Press Menu button
Specific Scenario Shortcut Function	Press M button

\*The indicator light will be on if you press any button when the battery capacity is full, and if it is not, it means the battery capacity is low.

\*The battery shall not be exposed to such scenarios as sunshine, fire-burning or similar overheating scenarios

### What contents do we provide?

By purchasing this Tmall TV Box, we offer you a one-year subscription period for you to choose diversified selections of free channels, VOD services, Contents, third-party APPs and games. A paid subscription may be required for some contents or third party APPs. Channels and contents available may be subject to change from time to time. The one year subscription period is starting from the first time you finish setting up your Tmall TV Box.

### FAQs

#### Q1 : What to do if the remote controller is insensitive or doesn't respond?

A : Please check the battery of the remote controller for proper installation and contact; Please try to replace the battery, so as to remove the problem of the insufficient battery.

#### Q2 : What to do if the device cannot be turned on?

A : Please check the power cord for proper correction and contact, and whether the power indicator light is on. If the device still cannot be turned on, please try to unplug from the power source and then re-plug.

#### Q3 : What to do if when turned on, the device has no response, black screen or abnormal image display?

A : Please check corresponding audio/video cables etc. for proper connection and contact; Please check whether the TV signal source has switched to a proper display mode (HDMI mode, etc.); If the image is abnormal, please adjust the image display area to its optimum state via Desktop - Settings - Image and Sound - Image Adjust.

#### Q4 : What to do if you having trouble completing guided setup?

Don't worry. It's usually an easy fix. For detailed trouble-shooting, visit <http://www.tmalltv.com> or call 4001588915



HDMI, HDMI HIGH DEFINITION MULTIMEDIA INTERFACE 和 HDMI 标识是 HDMI LICENSING LLC 在美国和其他国家的商标或注册商标。



本产品经过杜比实验室的许可而制造。Dolby, Dolby Audio和DOLBY将商标注册在美国和其他国家的商标。

#### FCC Statement:

This device complies with part 15 of the FCC Rules. Operation is subject to the following two conditions: (1) This device may not cause harmful interference, and (2) this device must accept any interference received, including interference that may cause undesired operation.

This equipment has been tested and found to comply with the limits for a Class B digital device, pursuant to part 15 of the FCC Rules. These limits are designed to provide reasonable protection against harmful interference in a residential installation. This equipment generates, uses and can radiate radio frequency energy and, if not installed and used in accordance with the instructions, may cause harmful interference to radio communications. However, there is no guarantee that interference will not occur in a particular installation. If this equipment does cause harmful interference to radio or television reception, which can be determined by turning the equipment off and on, the user is encouraged to try to correct the interference by one or more of the following measures:

- Reorient or relocate the receiving antenna.
- Increase the separation between the equipment and receiver.
- Connect the equipment into an outlet on a circuit different from that to which the receiver is connected.
- Consult the dealer or an experienced radio/TV technician for help.

Caution: Any changes or modifications not expressly approved by the party responsible for compliance could void the user's authority to operate the equipment.

This equipment complies with FCC radiation exposure limits set forth for an uncontrolled environment. This equipment should be installed and operated with minimum distance 20cm between the radiator & your body.

This transmitter must not be co-located or operating in conjunction with any other antenna or transmitter.