

The following features are available in this PDF document.



Quick Keyword Search

Enter the keyword in the search box and hit the search button



Quick Jump between Chapters

Click the title of a specific chapter on the Contents to jump to it

*Reading software such as Adobe Reader is needed to support the functions above.



ZHIYUN CINEPEER WEEBILL 3E

User Guide

Contents

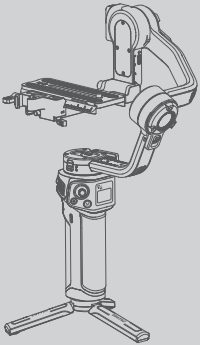
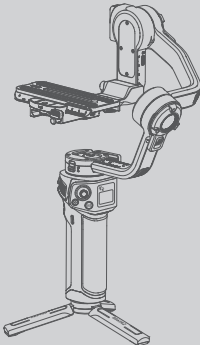
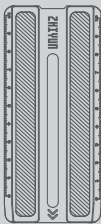

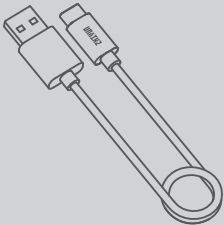
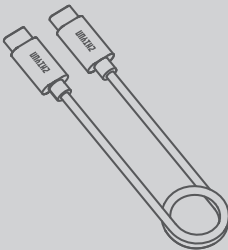
- Product List
 - Product List 1
- Get to Know ZHIYUN CINEPEER WEEBILL 3E
 - Get to Know ZHIYUN CINEPEER WEEBILL 3E 3
- Battery and Charging
 - Battery and Charging 6
- Mounting and Balancing
 - Mounting the Tripod 7
 - Mounting the Camera 7
 - Balancing 13
- How to Use ZHIYUN CINEPEER WEEBILL 3E
 - Button Description 15
 - Display Screen Description 16
 - Icon Description 17
 - Menu Description 19
 - Motor Torque Adjustment 23
 - Bluetooth Shutter Control 25
 - Gimbal Mode Description 26
 - Manual Reposition 29
- How to Use the App
 - Downloading the App 30
 - How to Connect 30
 - ZY Play Feature Description 32

- ☐ Firmware Upgrade & Calibration
 - Circumstances When Calibration Is Needed 33
 - Six-side Calibration 33
 - Motor Fine-Tuning 35
 - Firmware Upgrade 35
- ☐ Product Specifications
- ☐ Disclaimer and Warning
 - Reading Tips 42
 - WARNING 42
 - Safe Operation Guidelines 43
- ☐ Warranty Card
 - Warranty Period 44
 - Warranty Exclusions 44
 - Warranty Claim Procedure 44
- ☐ Contact Card

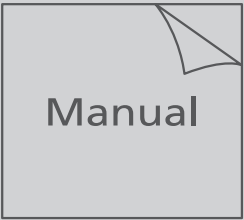
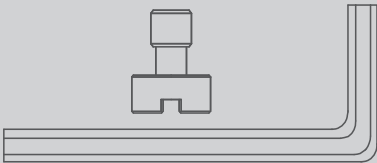


Product List

Before using this product, please check carefully that all the following items are included in the product package. In case that any item is found missing, please contact ZHIYUN or your local selling agent.

	
WEEBILL 3E (Standard) x1*	WEEBILL 3E (Lite) x1*
	
Quick Release Plate x1	Tripod x1**
	
USB Type-C Cable x1	Type-C to Type-C USB LN-UCUC-A02 Camera Control Cablex1

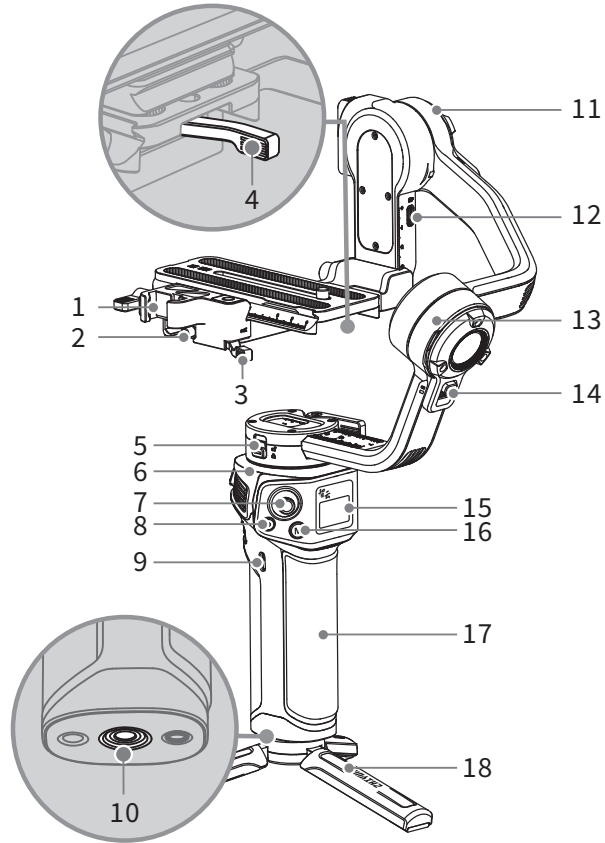


	
Quick Start Guide x1	1/4" Screw x1 M4 Wrench x1

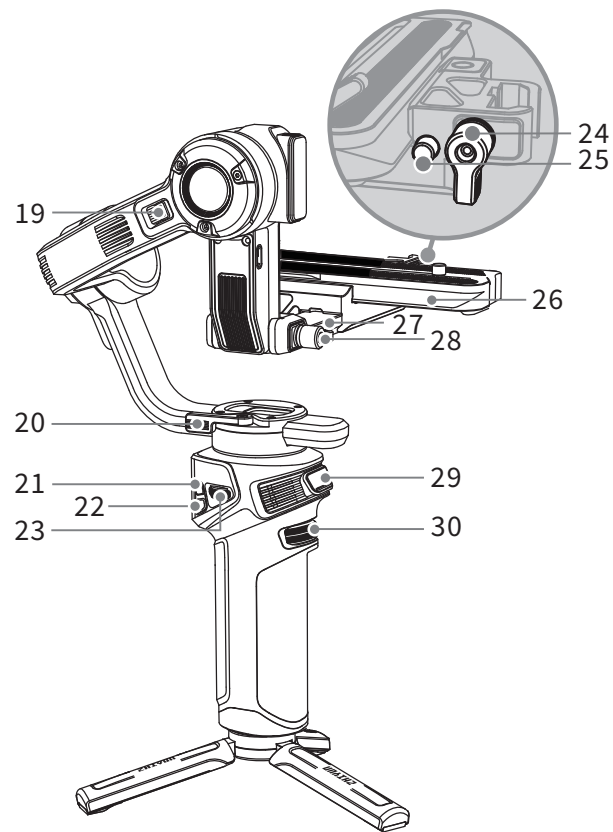
Purchasing ZHIYUN CINEPEER WEEBILL 3E Standard version or Lite version includes the corresponding version of the gimbal.
Items marked “***” are included in WEEBILL 3S standard version.

Get to Know ZHIYUN CINEPEER WEEBILL 3E

Standard Version



- | | |
|--|---------------------------|
| 1. Quick Release Plate Leveling Base | 10. 1/4" Threaded Hole |
| 2. Leveling Base Safety Lock | 11. Tilt Axis Motor |
| 3. Quick Release Plate Latch | 12. Camera Control Port |
| 4. Quick Release Plate Leveling Base Latch | 13. Roll Axis Motor |
| 5. Pan Axis Lock Switch | 14. Roll Axis Lock Switch |
| 6. Pan Axis Motor | 15. Display Screen |
| 7. Joystick | 16. Mode Switch |
| 8. Photo/Video Button | 17. Gimbal Handle |
| 9. Firmware Upgrade/Charging Port | 18. Tripod |



19.Tilt Axis Lock Switch

20.Pan Axis Latch

21.Power Button

22.Menu/Return Button

23.Control Dial

24.Leveling Base Lock Screw

25.Quick Release Plate Safety Lock

26.Quick Release Plate

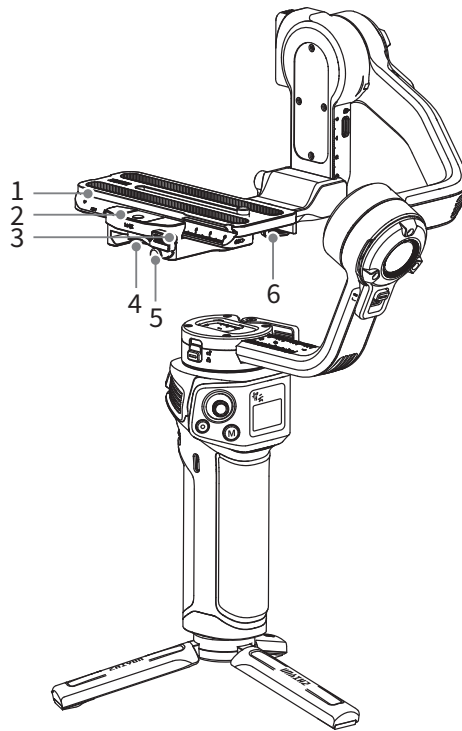
27.Level Mount

28.Level Mount Lock Screw

29.Trigger Button

30.Adjustment Wheel

Lite Version



- 1.Quick Release Plate Leveling Base
- 2.Quick Release Plate
- 3.Quick Release Plate Latch
- 4.Level Mount

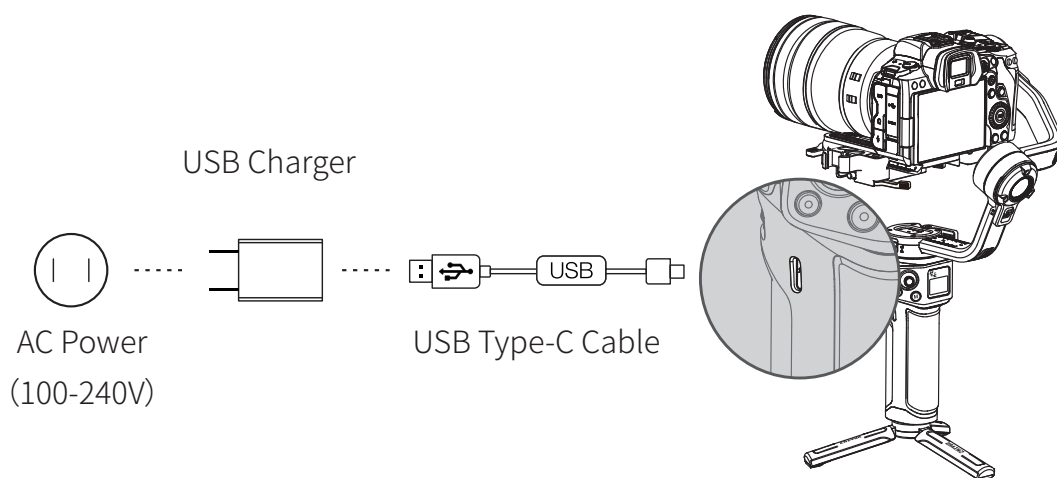
- 5.Quick Release Plate Safety Lock
- 6.Quick Release Plate Leveling Base Latch

💡 Unlisted components of the Lite version gimbal are the same as those of the Standard version.

Battery and Charging

ZHIYUN CINEPEER WEEBILL 3E adopts built-in battery. When using ZHIYUN CINEPEER WEEBILL 3E for the first time, please activate the gimbal by fully charging the battery to ensure the proper function of the gimbal.

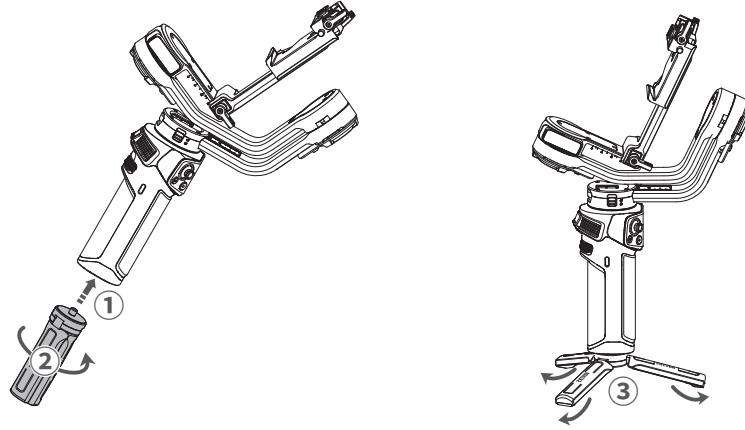
Charging method: Use provided USB Type-C cable to connect the USB charger (not included in the package) to charge ZHIYUN CINEPEER WEEBILL 3E. It is recommended to use USB chargers that meet the PD protocol. (supports 14W PD charging at most).



- 💡 ① USB charger is not provided.
- ② Please power off ZHIYUN CINEPEER WEEBILL 3E to charge.

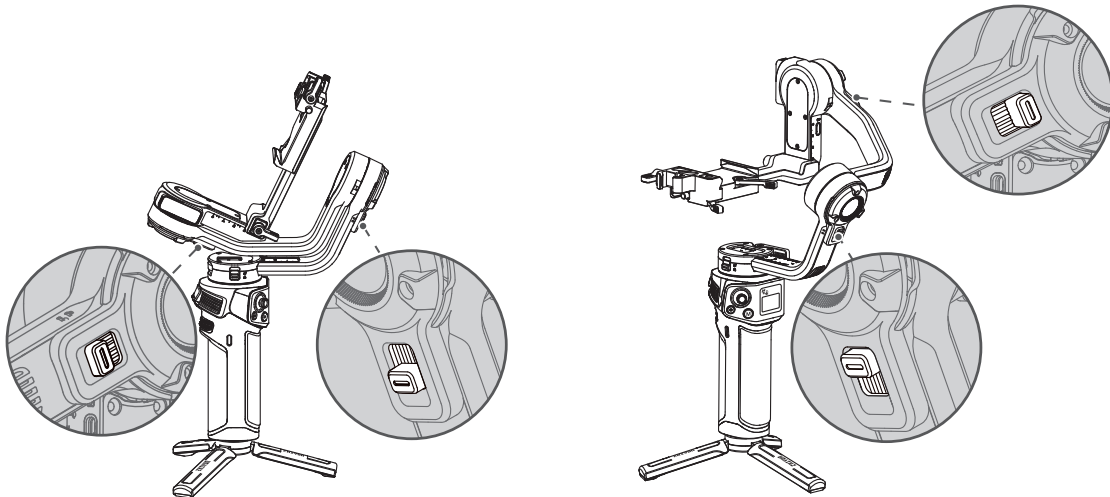
Mounting the Tripod

Mount the tripod to the bottom of the ZHIYUN CINEPEER WEEBILL 3E handle, then unfold the tripod and place the ZHIYUN CINEPEER WEEBILL 3E on a flat surface.



Mounting the Camera

1. Each axis of the gimbal is equipped with a lock switch. You can use these lock switches to lock the axes for convenient installation and storage. The storage state is the default state. Please toggle the lock switch to unlock the three axes, expand the gimbal as shown in the image, and lock the axes again for convenient camera installation.

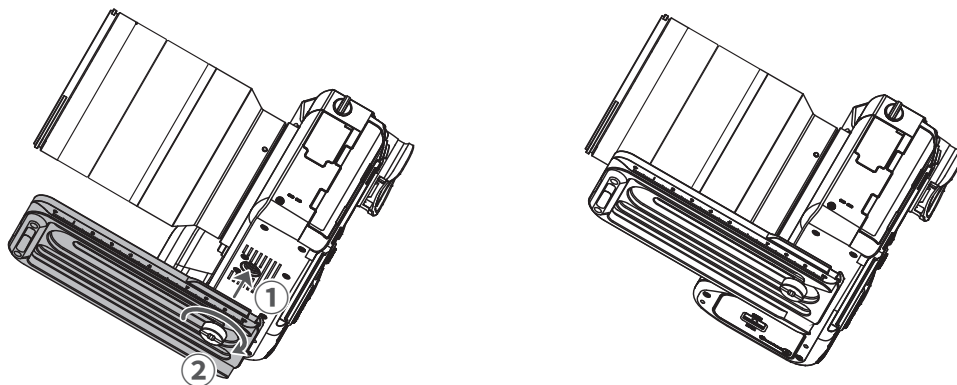


Locked state for storage

Locked state for installation

- ① Please mount the camera before powering on ZHIYUN CINEPEER WEEBILL 3E and balance the gimbal. Do not power on ZHIYUN CINEPEER WEEBILL 3E when there's no camera mounted on it.
- ② Before mounting the camera, make sure it is prepared ahead of time. Remove the lens cap and make sure the camera's battery and memory card are already in place.

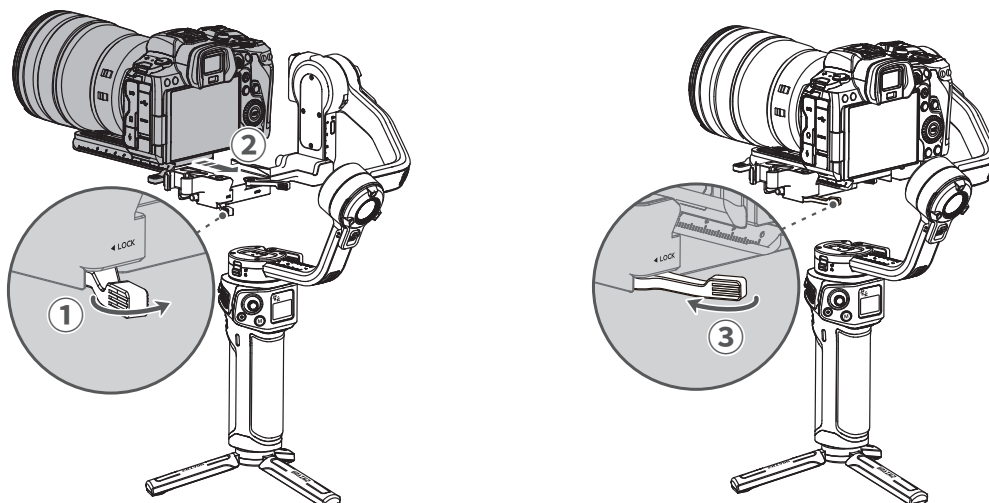
2. 将相机安装到快装板上①，并用螺丝锁紧②。



Installation Steps for Standard Version

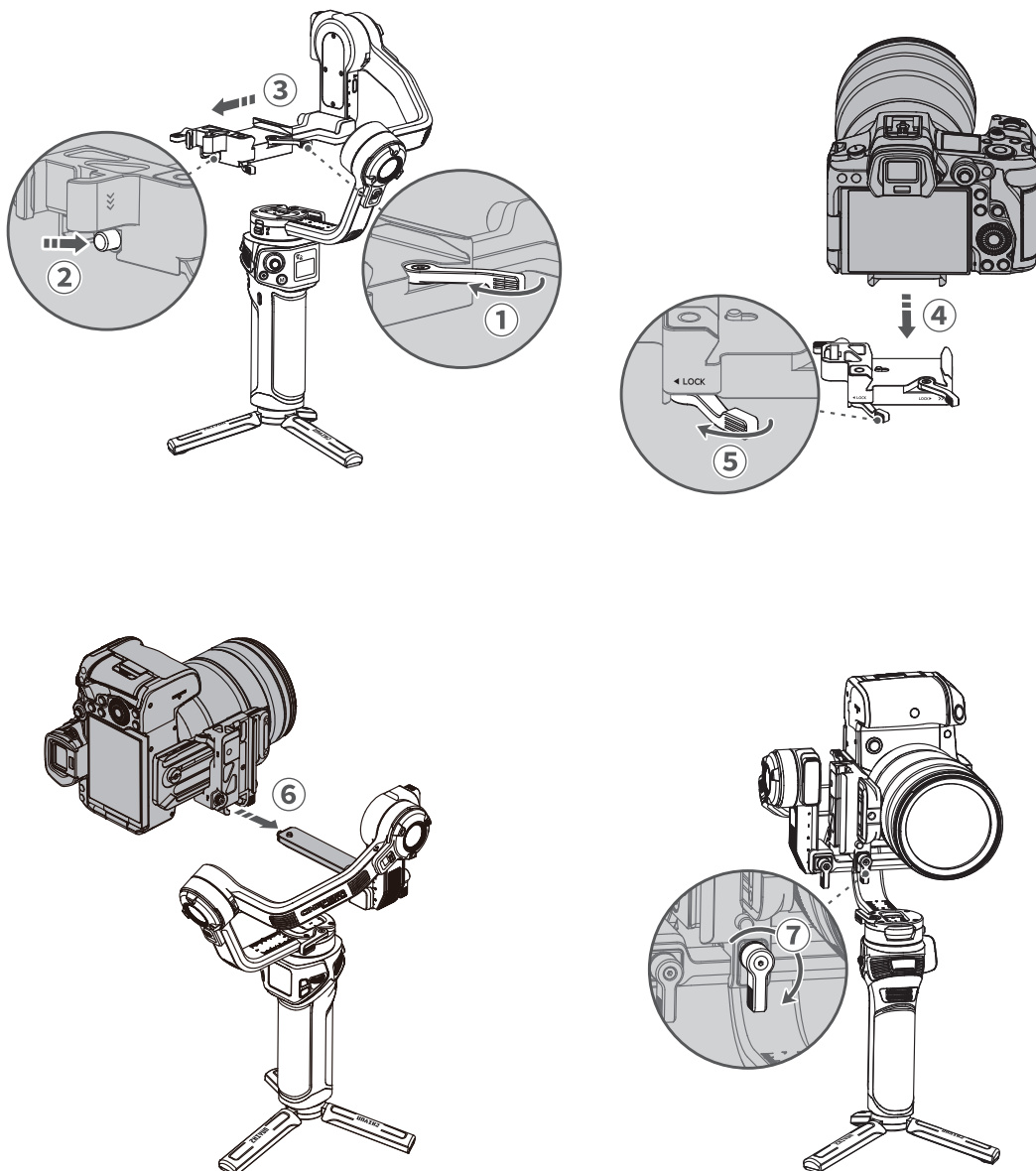
(1) Installation for Landscape Orientation

Unlock the quick release plate latch ① , install the quick release plate and camera onto the quick release plate leveling base ② and then tighten the latch ③ .

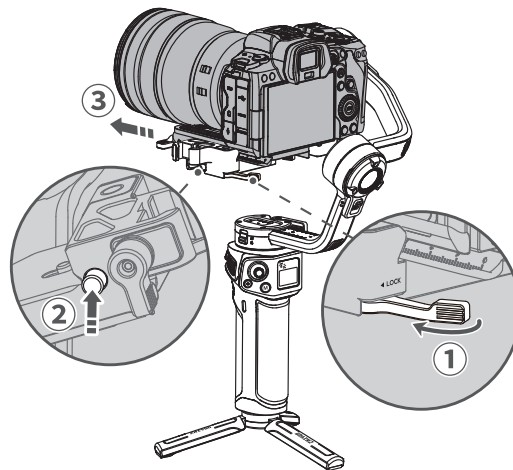


(2) Installation for Portrait Orientation

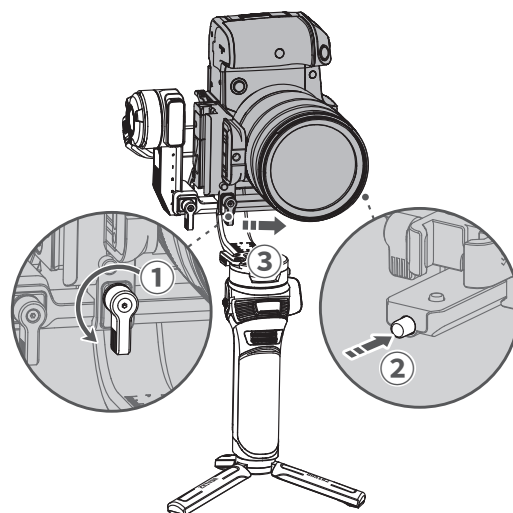
Unlock the quick release plate leveling base latch ① . Press and hold the leveling base safety lock ② and push the leveling base to the left until it is removed from the level mount ③ . Install the camera and quick release plate as a whole onto the leveling base ④ and tighten the latch ⑤ . Install the camera, quick release plate, and leveling base as a whole onto the level mount ⑥ . Tighten the leveling base lock screw ⑦ .



- 💡 When disassembling at horizontal orientation, please unlock the quick release plate latch ① and hold down the safety lock of the quick release plate ② to remove the camera and quick release plate as a whole ③ .

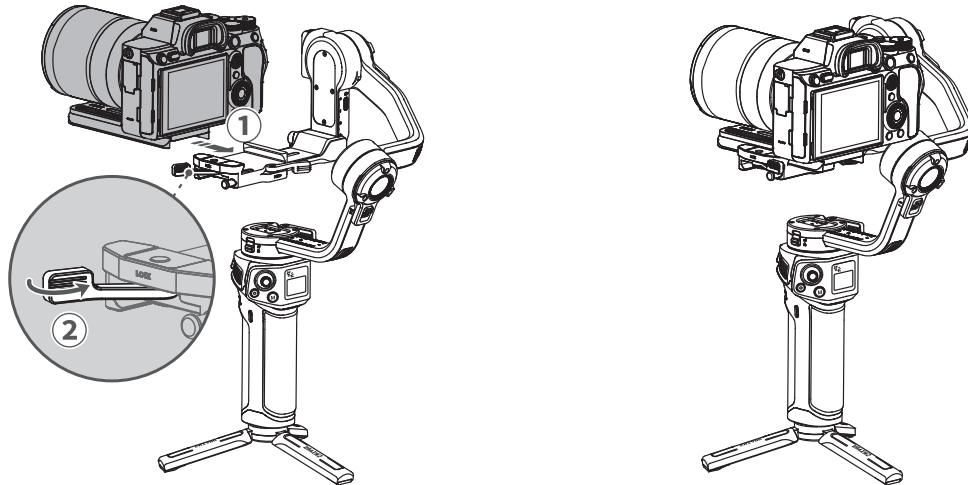


- 💡 When disassembling at portrait orientation, please loosen the screw that locks the leveling base ① , and hold down the safety lock of the leveling base ② to remove the camera, quick release plate and leveling base as a whole from level mount ③ .



Installation Steps for Lite Version

Install the quick release plate and camera onto the quick release plate leveling base ① and then tighten the latch ② .



💡 When disassembling, please unlock the quick release plate latch ① and hold down the safety lock of the quick release plate ② to remove the camera and quick release plate as a whole ③ .

