

iTAG User Manual

Thank you for choosing the smart anti-lost products iTag based on Bluetooth. iTag is a kind of Bluetooth Low-energy product which based on the newest Bluetooth 4.0 version. It can chain user's easy-lost & valuable belongings (such as keys, handbags etc.), kids or pets together with smart phones through specified App software within a setting Bluetooth connection distance. In the effective distance it can realize the functions of anti-lost, looking for smart phones, self-portrait and voice recording. The effective distance of iTag is 75 Feet in open range without barrier. With this device, your belongings, kids and pets won't leave your attentions any more.

iTag use CR2032 Lithium Coin Battery which is easy to get from markets, and it works for almost half a year.

Switch on/off

Switch on: Press and hold the button on iTag for 3 seconds until you heard the Beep twice

Switch off: Press and hold the button on iTag for 3 seconds until the long “Beep” sound.



Before using ,please download the Application and read the instruction carefully APP“CTracing” is available on an

Esweep [two-dimension code](#)



iOS



Android
English



Android
Made in China

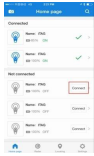
Connection

1. iTag will connect the smart phone automatically when power on, if it shows “disconnected” on the App, please click the “Connect” button to connect it again.

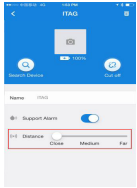
Click the button “” to find more connectable iTag devices, such



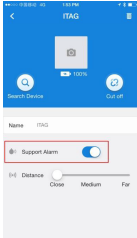
3.The item which you don't need, or slide this item to left on “device list” interface, click “-” to remove it out of the device list.



4. Distance can be adjustable close an Medium an far



On the “Device” interface, enter into submenu “iTag” item, click “Anti lost” to set a unique feature for alert function for each iTag, such as shut off the alert for one of connected iTag.



Setting for Alert

1. click the button on iTag to trigger the alert on the smart phone.
2. Show You anit-left device “iTAG”loging for
3. Click “Alert” button, iTag alerts, and click the “Stop Alert” will stop the alert from iTag.



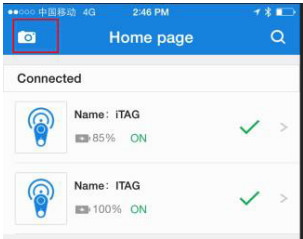
Photograph

As shown in the image

Press the “Photograph” button, it will turns to camera mode.

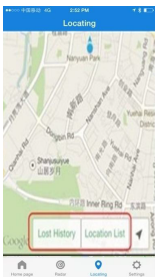
1. Press top right and left to set the flashlight and camera:
2. Press the button on the right button, you can set for burst shooting and interval timer shooting.

Press the button on iTag once, it works as a remote shutter to take photos.



Location

As shown in the image



Location list: when you pack your car, press the button on iTag, it will marks your current location on the map. Press the “Location list” and you will find where your vehicle is with easy tracking when you leave any big or underground parking lot



Lost history: If the iTag is lost, A pin-drop will be marked automatically on Map to tell you the site it was lost. just press “lost history” to find the record.

Remark: To delete the list, just scroll left the list and press the “Delete”

Menu

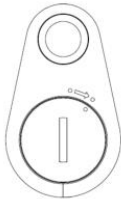
Setting

In order to experience the functions of iTag better, enter into the setting menu to set for your iTag.

As shown in the image



Battery replacement



Battery is in the back of the tag. Use a coin as a key and twist it to right to open the battery cover,then replace the battery. The used CR2032 cell is easy to get in the market.After replacement put the cover back and close it to left also with the coin.

FCC Statement

This equipment has been tested and found to comply with the limits for a Class B digital device, pursuant to part 15 of the FCC rules. These limits are designed to provide reasonable protection against harmful interference in a residential installation. This equipment generates, uses and can radiate radio frequency energy and, if not installed and used in accordance with the instructions, may cause harmful interference to radio communications. However, there is no guarantee that interference will not occur in a particular installation. If this equipment does cause harmful interference to radio or television reception, which can be determined by turning the equipment off and on, the user is encouraged to try to correct the interference by one or more of the following measures:

- Reorient or relocate the receiving antenna.
- Increase the separation between the equipment and receiver.
- Connect the equipment into an outlet on a circuit different from that to which the receiver is connected.
- Consult the dealer or an experienced radio/TV technician for help.

To assure continued compliance, any changes or modifications not expressly approved by the party.

Responsible for compliance could void the user's authority to operate this equipment. (Example- use only shielded interface cables when connecting to computer or peripheral devices).

This equipment complies with Part 15 of the FCC Rules. Operation is subject to the following two conditions:

- (1) This device may not cause harmful interference, and
- (2) This device must accept any interference received, including interference that may cause undesired operation.

RF warning statement:

The device has been evaluated to meet general RF exposure requirement. The device can be used in portable exposure condition without restriction.