

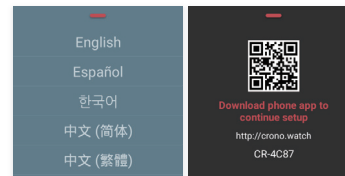


Model name: H1

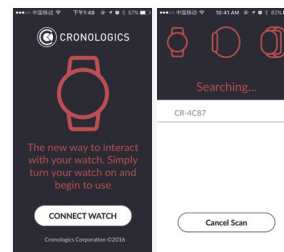


Mobilephone terminal download cronologics companion from appstore

1. Turn on the watch and choose setting → Select English

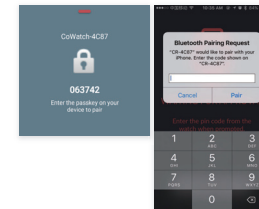


Open APP → Click “CONNECT WATCH”

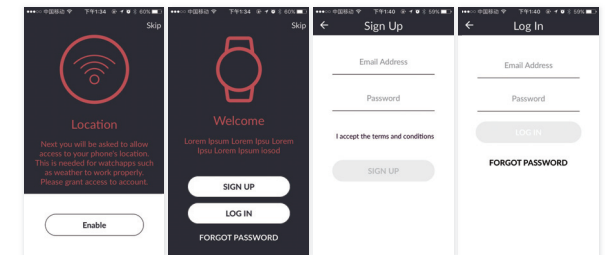


Select the Bluetooth model of the watch

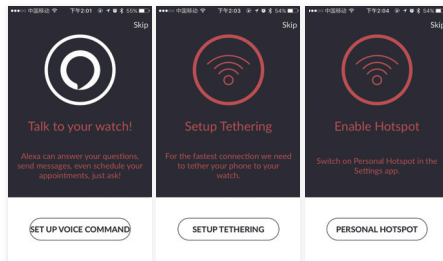
Bluetooth pairing request → Enter password, click pairing



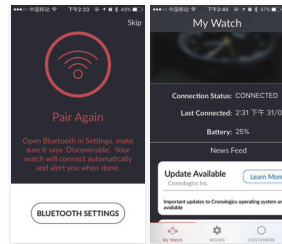
Select “Enable” / “Skip” → “SIGN UP” / “LOG IN” / “Skip”



Select “SET UP VOICE COMMAND” / “Skip” → “SETUP TETHERING” / “Skip” → “PERSONAL HOTSPOT” / “Skip”



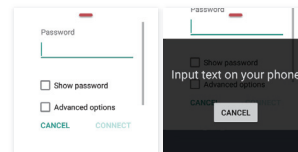
“BLUETOOTH SETTINGS” / “Skip”



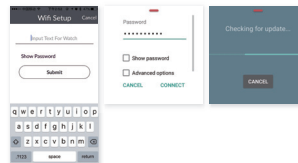
2.Set mobilephone terminal → “FIND WIFI” → Select WIFI



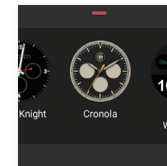
Enter password (click)



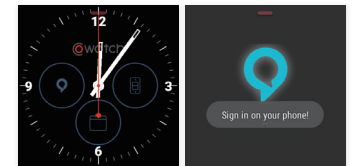
Change to mobile phone terminal and enter password → “Submit” → “CONNECT”



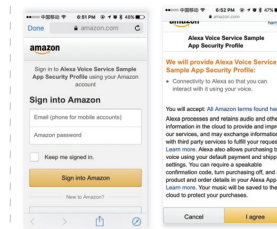
Choose one watch face



Alexa language setting : Click Alexa icon



Log in Amazon account on mobile phone → Select “I agree” → Complete setting



FCC NOTE:  
This device complies with Part 15 of the FCC Rules.  
Operation is subject to the following two conditions: (1) this device may not cause harmful interference, and (2) this device must accept any interference received, including interference that may cause undesired operation.

THE MANUFACTURER IS NOT RESPONSIBLE FOR ANY RADIO OR TV INTERFERENCE CAUSED BY UNAUTHORIZED MODIFICATIONS OR CHANGE TO THIS EQUIPMENT. SUCH MODIFICATIONS OR CHANGE COULD VOID THE USER'S AUTHORITY TO OPERATE THE EQUIPMENT.

Long press the power button will appear system setting  
When the watch is in a state of lock screen need to press power key to wake up  
Change watch face → long press the watch face then you can change anyone you like