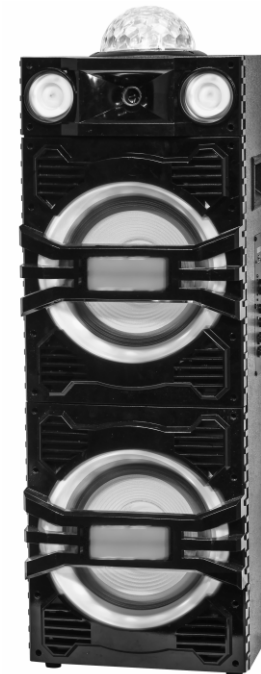




USER MANUAL

MODEL: ACE210



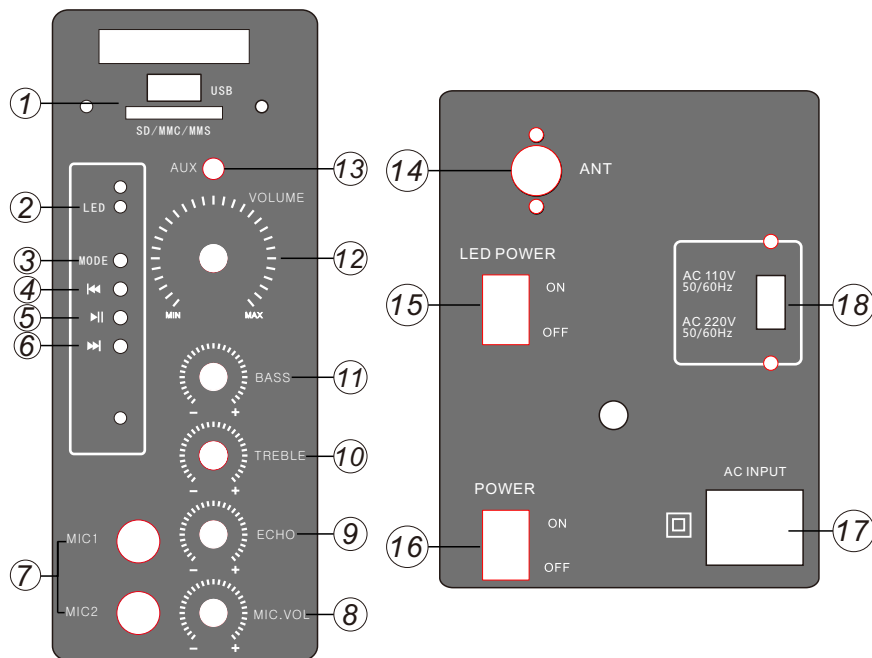
USB/SD AUX FM BT

AC110V-220V,50/60Hz MADE IN CHINA

Please read the instruction manual firstly
to avoid any wrong operation.

Control panel

FRONT PANEL FUNCTION OPERATION INSTRUCTION



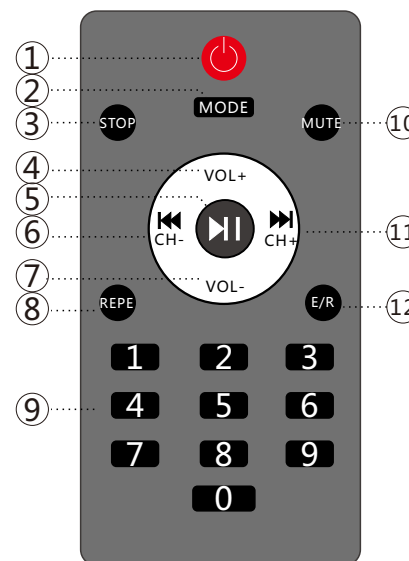
- 1.USB/SD card slot
- 2.Power on/off LED indicator
- 3.Input(Mp3)button
- 4.Previous song in Mp3 mode
- 5.Play/Pause
- 6.Next song in Mp3 mode
- 7.Wired Mic. input jack
- 8.Mic. volume control knob
- 9.Echo volume control knob
- 10.Treble volume control knob
- 11.Bass volume control knob
- 12.Master volume control knob
- 13.RCA audio input jack
- 14.FM Antenna
- 15.LED ON/OFF switch
- 16.Power ON/OFF switch
- 17.AC110V-220V input for charging
- 18.Voltage selector AC110V to AC220V

ATTENTION!

The USB port of our speaker is for USB Flash only, please do NOT connect it with power bank, hardware or cell phone etc devices. It will caused the damage of USB port and display screen!

Remote control

REMOTE CONTROL OPERATION INSTRUCTION



- 1.Power key
- 2.Choose signal input
- 3.Stop play on Mp3 mode
- 4.VOL+
- 5.Play/Pause, long-press
- 6.Last song/Last FM channel
- 7.VOL-
- 8.Choose USB input signal
- 9.Choose song number directly
- 10.Mute key
- 11.Next song/Next FM channel
- 12.Different sound field effect

OPERATION GUIDE

1. Start
Prior to starting the system, please turn the master volume knob to the lowest level and correctly connect the system.
2. Main sound channel adjusting
Adjust the volume knob, treble volume knob and bass volume knob until you get the desirable sound quality.
3. Karaoke function
Prior to inserting the microphone, please turn off the microphone, set the echo knob in balance and turn the microphone volume to the lowest level. If you are not satisfied with the microphone sound quality, please adjust the microphone volume and echo knob until you get the desirable sound.

§ 15.19 Labelling requirements.

This device complies with part 15 of the FCC Rules. Operation is subject to the following two conditions: (1) This device may not cause harmful interference, and (2) this device must accept any interference received, including interference that may cause undesired operation.

§ 15.21 Information to user.

Any Changes or modifications not expressly approved by the party responsible for compliance could void the user's authority to operate the equipment.

§ 15.105 Information to the user.

Note: This equipment has been tested and found to comply with the limits for a Class B digital device, pursuant to part 15 of the FCC Rules. These limits are designed to provide reasonable protection against harmful interference in a residential installation. This equipment generates uses and can radiate radio frequency energy and, if not installed and used in accordance with the instructions, may cause harmful interference to radio communications. However, there is no guarantee that interference will not occur in a particular installation. If this equipment does cause harmful interference to radio or television reception, which can be determined by turning the equipment off and on, the user is encouraged to try to correct the interference by one or more of the following measures:

- Reorient or relocate the receiving antenna.
- Increase the separation between the equipment and receiver.
- Connect the equipment into an outlet on a circuit different from that to which the receiver is connected.
- Consult the dealer or an experienced radio/TV technician for help.