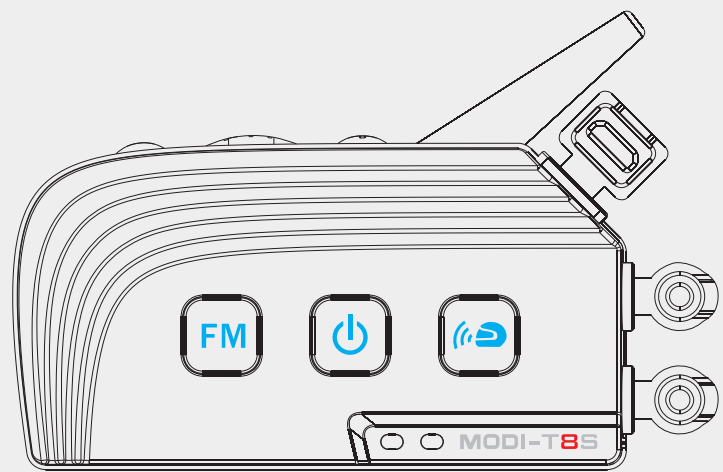


User's Guide



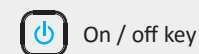
TTS

FCC ID:2AIEBTTS

Multiplex Helmet Bluetooth Headset

www.motointerphone.com

1、MODI-T8S Key Function Description



On / off key

1. On / off
2. Paired Mobile Phone
3. Power Tips
4. Hang up the Bluetooth Intercom



Mobile Phone Key

1. Music play/pause
2. Call answering / third party call answer / end call / reject call



Bluetooth Intercom Key

1. Paired Bluetooth intercom
2. Connect Bluetooth intercom



FM Radio Key

1. Open/Exit FM Radio



Volume Up Key

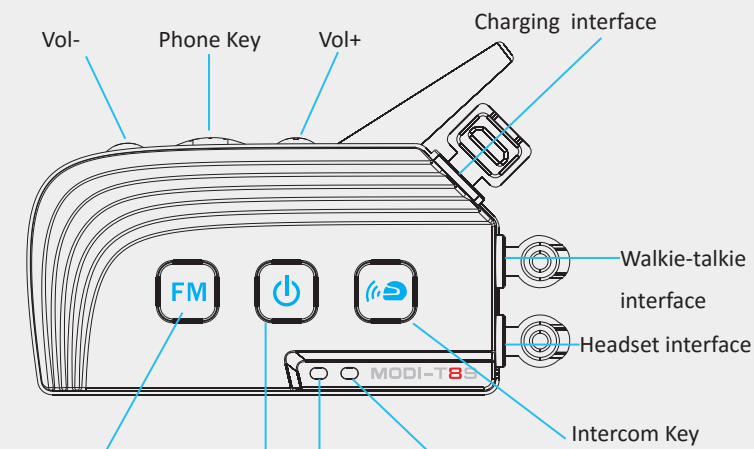
1. Volume Up
2. last song
3. FM Radio Search Up
4. Last Number Redial



Volume Down Key

1. Volume Down
2. Next Song
3. FM Radio Search Down
4. Voice Dialing

2、LED Status Indicator

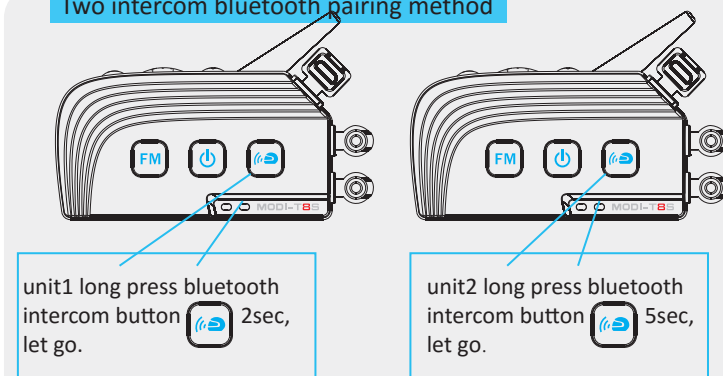


| LED Status | Indicator |
|--|--|
| Blue LED Flash(once) : | Bluetooth is not connected |
| Red LED Blue LED Alternating Flash (slow) | Bluetooth By Pairing Mode |
| Red LED Blue LED Alternating Flash(fast) | Bluetooth is in active pairing search mode |
| Blue LED flash two times : | Bluetooth has been connected |
| Red LED slow flash : | Charging |
| Red LED Long time light : | Charging finish |
| Red LED flash three times : | Battery low warning |

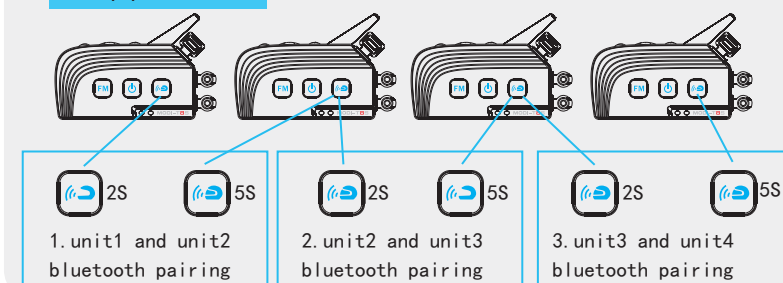
3、Charging

- 1.You can use the package containing the Micro USB line charging, charging Bluetooth intercom indicator red LED flashing, charging, Bluetooth intercom indicating red LED flash, before each use recommended to charging full the battery.
- 2.Power shortage tip: every 30s, the headset will automatically voice prompt Battery low , while the right side of the red LED flashes 3 times, to prompt the user to charge.
- 3.In the starting state can be a double click on the open/shut down button to check the battery current battery, Battery power to the sound to listen to the speaker.

Two intercom bluetooth pairing method



Group pair method



7. Walkie-talkie use method

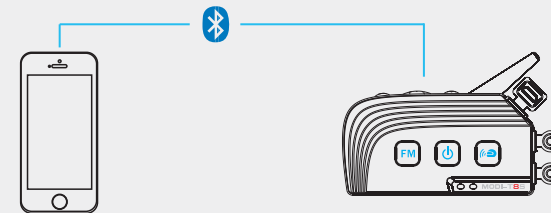
1. Plug the Walkie-talkie link line into the TTS Walkie-talkie interface, when the headset is properly connected to the headset when the headset is ready to listen to the voice of the other Walkie-talkie, You can listen to the sound of the other Walkie-talkie, There are other sound signals come in (such as: mobile phone, Bluetooth intercom, music, FM radio) sound signal will mix, you can hear these sounds at the same time.
2. Walkie-talkie Microphone transmit : Press the intercom connecting line of the PTT button, you can use the headset microphone to the speaker, release the PTT button, if you end the intercom speaker, in mobile phone headset / Bluetooth intercom / Music Player state, then hold down the PTT speaker, on behalf of all the party people to hear your speech
3. Walkie-talkie volume adjustment method, when the headset is in charge to use the walkie talkie words, because TTS headset are different and have different volume, so suggest you in connecton with Walkie-talkie, TTS no other voice input, the intercom itself volume to the appropriate size, in order to adapt to the different state of the headset volume.

8.FM radio

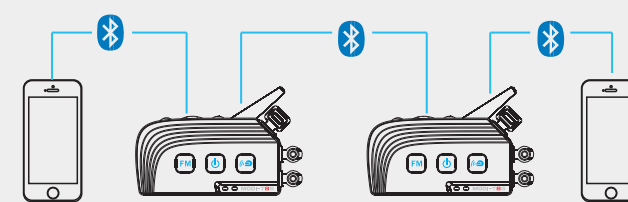
1. Standby mode, press FM key to turn on the radio, press again Press FM key to turn off the radio.
2. The radio to search up: In the course of using the radio, double press volume up key , search up.
3. The radio to search down: In the course of using the radio, double press volume down key , search down.
4. FM radio volume adjustment method, short press the volume up key to the up volume, short press the volume down key to the down volume .

9.Front and rear seat music sharing function

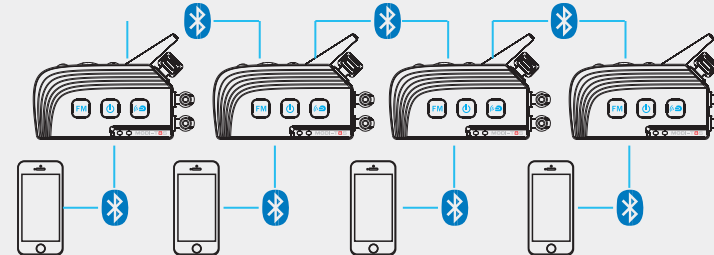
- 1.Receive / call/play music



2. Receive / call/play music/Bluetooth intercom



- 3.Receive / call/play music/Bluetooth Intercom group



4. ON/ OFF

- 1.In the off state, long press on / off key about 2S, the blue light on the right, the headset tip "power on"
- 2.In the boot state, at the same time, press the on / off key and volume up key about 0.2S, the right side of the red LED light, the headset tip "power off" Or long press on / off 8s, the right side of the red LED light, the headset tip " power off"

5. Pairing mobile phones using

Mobile pairing

- 1.TTS long press on / off at about 8s, the left red LED&blue LED lights flashing alternately, the headset tips "pairing". Turn on the phone, search TTS', and then click on the phone to connect to the phone. After the end of the match, the mobile phone indicator light back to the standby mode, blue lights flash 2 times.

Mobile Phone calls to answer or dial

- 1.Answer incoming calls, call when the phone key to answer calls.
- 2.Automatic answering calls, when set to automatically answer the phone, the caller is more than about 6S did not click the phone key to answer the phone, the phone will automatically answer the phone calls.
- 3.Hang up the phone, when you calling, Press on the phone key to hang up the phone.
- 4.Caller reject, double press phone key to reject calls.
- 5.Voice dialing, connecting the phone standby mode, double Press the volume key to achieve voice dialing. (the Mobile phone itself must be equipped with voice dialing function).
- 6.End number redial, connected mobile phone standby, double-press the volume up key to the up volume, a short press the volume key to the down volume.
- 7.Connected with the Mobile phone, the Mobile phone is not connected to the state, you can press the phone key, Headphones from reconnect has been connected to the Mobile phone..
- 8.Connected to third party calls, when the connection two phone, the first mobile phone in the call, the second mobile phone calls, you can double-Press the phone key to connect second mobile phone, to retain the first phone calls, to be back to the first second mobile phone calls.

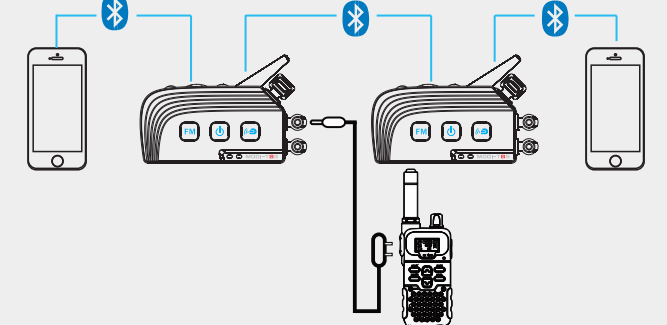
9. Play / pause mobile phone music, mobile phone connection status is short press the phone key to achieve a mobile phone music player /pause.
10. Mobile phone volume adjustment method, a short press the volume key to the up volume, a short press the volume key to the down volume.

6.Bluetooth intercom

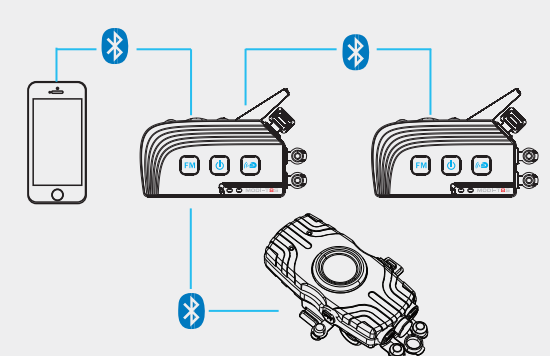
Bluetooth intercom paired

1. The first TTS into pairing state: long press the Bluetooth intercom button 2S, red LED and blue LED flash quickly let go, the first TTS into the initiative find mode.
2. The Second TTS into to passive matching state: Long press the Bluetooth intercom button 5S, red LED and blue LED flashing slowly let go, the machine into the passive matching mode.Wait for a moment, the pairing is completed in the standby mode, the blue LED on the right of the fast flashing 2 times, voice prompts pairing success.
3. Exit the intercom paired state: short Bluetooth intercom button to exit the paired state, blue LED indicator returns standby.
4. On / off the Bluetooth intercom intercom: short press Bluetooth intercom button, connected Bluetooth intercom, When is Bluetooth intercom, Press on / off button, hang up the Bluetooth intercom.
5. On / off Bluetooth intercom group (up to 4 units can be established at the same time TTS intercom): The paired intercom after, double press the first TTS on the Bluetooth intercom button established intercom Bluetooth connection group. press on / off button, hang up the Bluetooth intercom group.
6. Bluetooth intercom volume adjustment method, long press the volume up key to the up volume, long press the volume down key to the down volume.
7. Clear the intercom paired record: Volume up key + volume down key together press 1s, the red light flashes 3 times, remove all intercom matching records.

- 4.Receive / call/play music/Bluetooth Intercom /Walkie-talkie



- 5.Receive / call/play music/Bluetooth Intercom/MODI-01 adapter



10.Technical index

Dual mode Bluetooth, Bluetooth 4.0+ Bluetooth 4.1
Supports HSP Profile:, A2DP, AGHSP, HFP
Working hours: 12 hours
Standby time: 300 hours
Charging time: 3 hours
Battery: lithium containing rechargeable lithium battery 800mA
Dimensions: 83 mm *42 mm *19 mm
CE, FCC, TELEC, NCC

Installation method

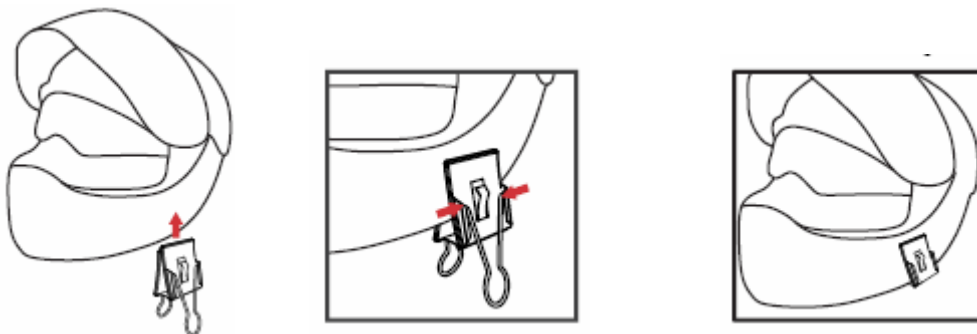
MOUNTING (Permanent Mount)

- 1, Locate and clean a position on the left side of helmet close to lower edge of the helmet,
- 2, Peel off the 3M double sided tape protective film and place the mount with logo on bottom and place mount to the position in step 1
- 3, Apply pressure to the metal bracket to the metal bracket to ensure that the bracket is, firmly secured. Note: It takes 24hours for adhesive to set.



MOUNTING (Temporary Mount)

- 1, Position and fasten the clip bracket onto helmet.
- 2, Remove the metal handles after clip bracket has been installed.
- 3, Use additional anti-slip rubber patch provided if required.



INSTALL CONTROL UNIT

- 1, from the top, slide Ejeas_TTS unit onto the bracket. You should hear a click sound

when fully inserted,

2, Fully insert the speaker 3.5mm jack connector.

3, Remove 3.5mm Jack speaker connector.

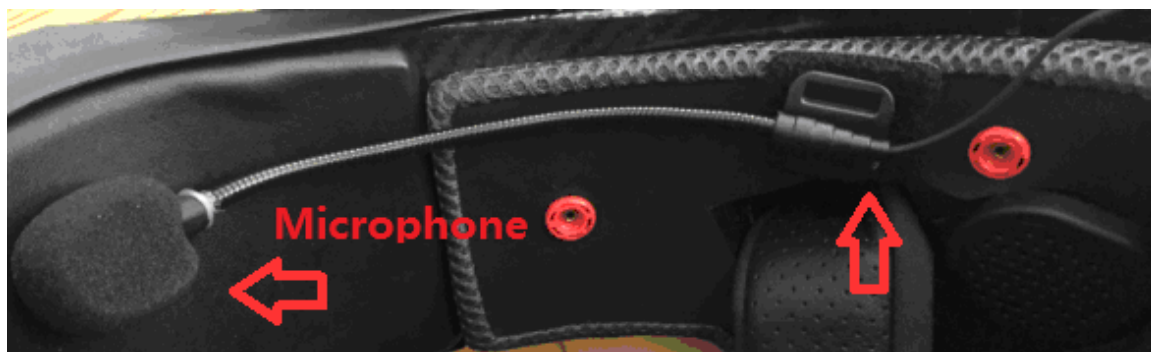
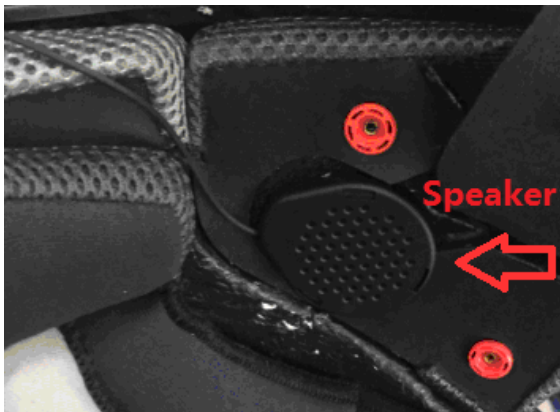
4, Slide Ejeas _ TTS upward to release from.



Earphone mounting method

1, Headphone speakers are on the left and right ears of the helmet.

2, The microphone is mounted near the mouth of the helmet.



NOTE: This equipment has been tested and found to comply with the limits for a Class B digital device, pursuant to part 15 of the FCC Rules. These limits are designed to provide reasonable protection against harmful interference in a residential installation. This equipment generates, uses and can radiate radio frequency energy and, if not installed and used in accordance with the instructions, may cause harmful interference to radio communications. However, there is no guarantee that interference will not occur in a particular installation. If this equipment does cause harmful interference to radio or television reception, which can be determined by turning the equipment off and on, the user is encouraged to try to correct the interference by one or more of the following measures:

- Reorient or relocate the receiving antenna.
- Increase the separation between the equipment and receiver.
- Connect the equipment into an outlet on a circuit different from that to which the receiver is connected.
- Consult the dealer or an experienced radio/TV technician for help.

This device complies with part 15 of the FCC rules. Operation is subject to the following two conditions:

- (1) this device may not cause harmful interference, and
- (2) this device must accept any interference received, including interference that may cause undesired operation.

Changes or modifications to this unit not expressly approved by the party responsible for compliance could void the user's authority to operate the equipment.

Note: The test separation distance used for the SAR assessment is 10mm.

The device cannot be installed on a helmet that does not meet the minimum separation distance specified.