

Wireless bedroom soundscape speaker

M5

Brand:OVC

FCC ID:2AIE2M5

Manual

IMPORTANT SAFETY WARNINGS

1. READ these instructions.
2. DO NOT use this device near water .
3. CLEAN ONLY with dry cloth .
4. DO NOT use near any heat sources such as radiators. Heat registers, stoves, or other product (including amplifiers) that produces heat .
5. PROTECT the USB cord from being walked on or pinched , particularly at the plugs and the point where it exits from the speaker.
6. ONLY USE attachments/accessories specified by the manufacturer.
7. UNPLUG this device during lightning storms or when unused for long periods of time .
8. To completely disconnect the speaker from the AC main , disconnect the power supply from the AC receptacle .

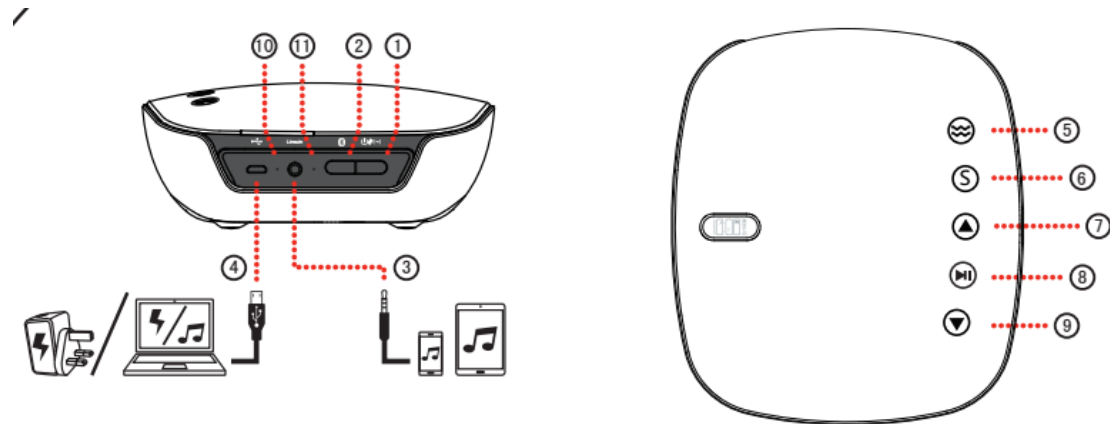
WARNING : To reduce the risk of fire or electrical shock , do not expose this device to rain or moisture .

WARNING : No naked flame sources - such as candles - should be placed on the product. Place the equipment near a main power supply outlet and make sure you can easily access the power breaker switch .

CAUTION

The manufacturer is not responsible for any radio or TV interference caused by unauthorized modifications to this equipment. Such modifications could void the user's authority to operate the equipment .

GET STARTED



① Power switch 【Long press : power on/power off ; Short press : switch Soundscape--small size room (around 10 m²) , Middle size room (around 15 m²) , Large size room (around 20 m²) 】

② Bluetooth (it enters the pairing mode once power on / short press will disconnect device .)

③ AUX IN port

④ Micro USB Port (#1 Support 5V/1A USB power adapter, #2 Support music download from the website wanan10.cn to the speaker)

⑩ Battery status indicator: full battery, solid red; Low battery, flash; no power, no light .

Bluetooth connection status indicator: Device connected, solid blue; Device disconnected, flash..

⑤ Music source switch ---- Wireless playing mode / Nature sound mode (built-in) / Aux mode (priority)

⑥ Sleep Mode (it automatically decrease the sound to zero gradually within 30 minutes, then enters into the standby mode)

⑦ Volume up (long press) / Next song (short press)

⑧ Play / Pause (it is muse in AUX mode)

⑨ Volume down (long press) / Previous song (short press)

* Touch any key , it exit the standby mode .

About M5

It is defined as the bedroom soundscape wireless speaker featured with the fabric surface.

Nature sounds built-in , which were recorded from nature , including rain&thunder, waves, stream ,water, etc. These sounds are thought close to pure white noise , which are proved functional to relieve stress and improve sleep .

To avoid disturbance to sleep, It features "Sleep mode", under this mode, the sound volume will reduce to zero gradually within 30 minutes. Some research suggests the people will get into slow-wave sleep around 30 minutes later.

Three size bedroom sound effects preset by Sound- Field Tech, You just need to know what size of your room, and press the back button to choose the appropriate setting.

Bedtime remind at 10:00 PM by Real-time-chip

To download more high resolution nature sound, pls visit website www.wanan10.cn.



Specification

- * Bluetooth V2.1+EDR
- * Support protocol A2DP
- * Nature sound mode, Bluetooth mode, Aux-in mode
- * Pair and play with your Bluetooth device with 10 meters
- * 2.5" woolly paper cone transducer , full spectrum , 10W, 4 Ω
- * DSP Built-in
- * Frequency response: 100-16000HZ +/-3dB
- * Sensitivity: $\leq 800\text{mv}$ (1KHz)
- * Built-in chargeable lithium battery , support 8 hours of playing (depends on music and volume)
- * 8G memory
- * Product size : 165*145*45mm
- * Weight : 0.65KG
- * Sensor touch control available on the front of speaker

Packing Accessories

- | | |
|---------------------------------------|------------------------|
| * Wireless bedroom soundscape speaker | * 1*USB charging cable |
| * Manual | * 1* 3.5mm audio cable |
| * Warranty card | |

NOTE: This equipment has been tested and found to comply with the limits for a Class B digital device, pursuant to part 15 of the FCC Rules. These limits are designed to provide reasonable protection against harmful interference in a residential installation. This equipment generates, uses and can radiate radio frequency energy and, if not installed and used in accordance with the instructions, may cause harmful interference to radio communications. However, there is no guarantee that interference will not occur in a particular installation. If this equipment does cause harmful interference to radio or television reception, which can be determined by turning the equipment off and on, the user is encouraged to try to correct the interference by one or more of the following measures:

- Reorient or relocate the receiving antenna.
- Increase the separation between the equipment and receiver.
- Connect the equipment into an outlet on a circuit different from that to which the receiver is connected.
- Consult the dealer or an experienced radio/TV technician for help.

This device complies with part 15 of the FCC rules. Operation is subject to the following two conditions:

- (1) this device may not cause harmful interference, and
- (2) this device must accept any interference received, including interference that may cause undesired operation.

Changes or modifications to this unit not expressly approved by the party responsible for compliance could void the user's authority to operate the equipment.

LIMITED WARRANTY

For countries outside of China , M5 is warranted against defects in materials and workmanship for a period of (1) year from the date of original purchase from an authorized OVC® dealer.

If a defects exists, OVC® at its option will :

- (1) repair the product at no charge using new or refurbished parts,
- (2) exchange .the product with a functional equivalent product that is new or refurbish
- (3) refund the original purchase price .

This does not means you can abuse your speaker expect warranty service. We do not cover normal wear and tear , blown speakers, cut cords, bent jacks,scratches, loss or theft . This warranty excludes damages resulting from abuse, accident, modifications or other causes that are not defects in materials and workmanship. Customization of your product will void your warranty .

Any recovery is limited to the original purchase price , No other person is authorized to modify this limited warranty , Your seller is responsible for any other warranties.

To register your product and for warranty terms and conditions , visit our web site at www.wanan10.cn .

(WATA electronics co., ltd reserve the right of final explanation of the above terms.)



Learn more “ OVC “

Pls scan the left 2D barcode , then enters into the web site .

Service Line : 400-9968-303