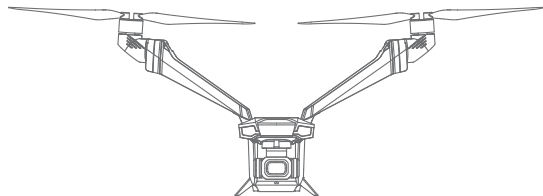


ZEROZERO
ROBOTICS

VCOPTER
FALCON *Mini*



Quick Start Guide

快速入门指南

FCC Regulations:

This equipment complies with part 15 of the FCC Rules.

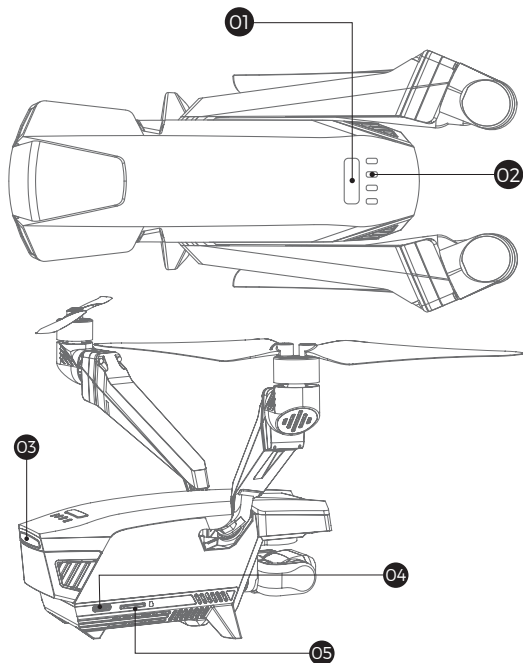
Operation is subject to the following two conditions:

- (1) This device may not cause harmful interference, and
- (2) This device must accept any interference received, including interference that may cause undesired operation.

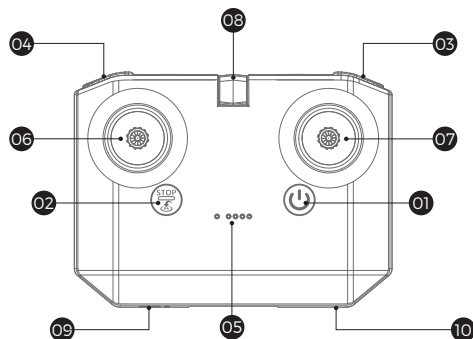
© 2023 ZeroZeroTech - All Rights Reserved

深圳零零无限科技有限公司 版权所有

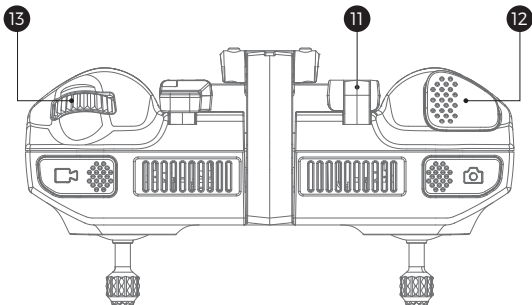
V202311



- 01 Power Button 电源按键
- Press once to check the current battery level 短按查看电量
- Press and hold to power the aircraft on or off 长按开机/关机
- 02 Battery Level LEDs 电量指示灯
- Displays the current battery level of the aircraft 显示当前飞行器电池电量
- 03 Status LED 状态指示灯
- Indicates the status of the aircraft 显示飞行器的系统状态
- 04 USB-C Port USB-C接口
- 05 micro-SD SD卡槽
- microSD Card Slot 支持扩展相机存储



- 01 Power Button 电源按键
- Press once to check the current battery level 短按查看电量
- Press and hold to power the remote controller on or off 长按开机/关机
- 02 Flight Pause/Return to Home (RTH) Button 急停 / 智能返航按键
- Press and hold 2 seconds to initiate RTH/Landing 长按2S返航/降落
- Press again to cancel RTH/Landing 短按取消
- 03 camera 拍照
- 04 video 录像
- 05 Displays the current battery level of the remote controller 状态及电量指示灯
- 06 Left control Sticks 左摇杆
- 07 Right control Sticks 右摇杆
- 08 Mobile Device Holder 移动设备支架
- For mounting the mobile device securely on the remote controller 用于放置移动设备
- 09 For charging 充电接口
- 10 Connecting mobile device 连接移动设备



- 11 Antennas 天线转轴
-Unfold upwards during flying 飞行时需向上展开
- 12 Press once to switch mode between Sport and Normal Fn按键 短按开启/关闭运动模式
-Press and hold to enter remote control setting mode 长按2S进入遥控器设置模式
- 13 Gimbal Dial 云台俯仰控制波轮
-Controls the tilt of the camera 拨动调节云台俯仰角度

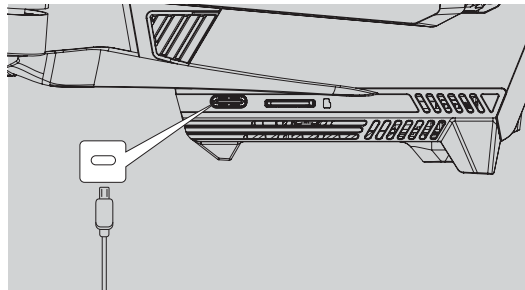
Step 1 Download V-Copter App

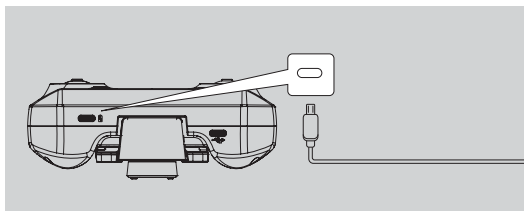
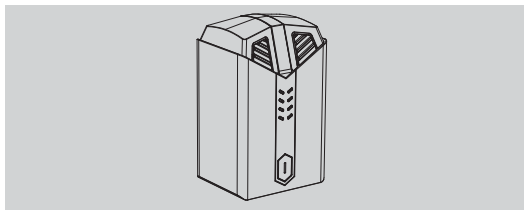
- Use mobile phone to scan the QR code below or download the V-Copter App from the App Store / Google Play Store
*The V-Coptr App is compatible with iOS 12.0 (or above) or Android 9.0 (or above)



Step 2 Charging

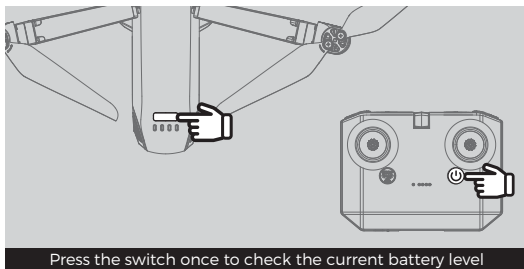
- Please charge the aircraft battery and remote control before flying for the first time to ensure the flight experience





Connect the USB charger to the USB-C port on the aircraft/remote control to charge and activate the devices for the first time. Start charging indicator light flashing until the indicator light goes out.

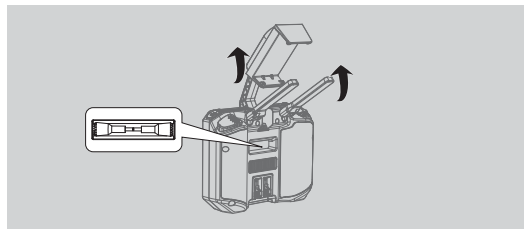
■ Check the battery level



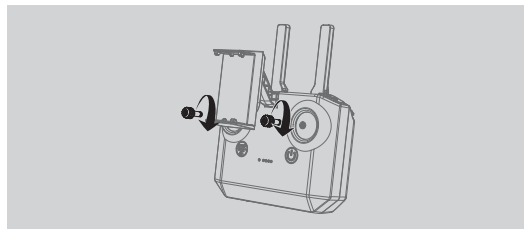
Press the switch once to check the current battery level

Step 3 Prepare the Controller

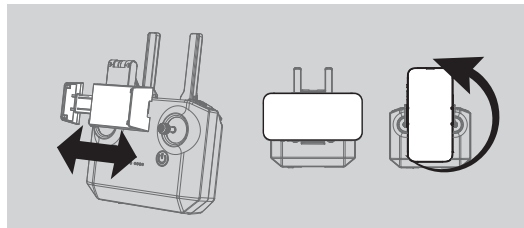
■ Unfold the Mobile Phone Stand and the Antennas



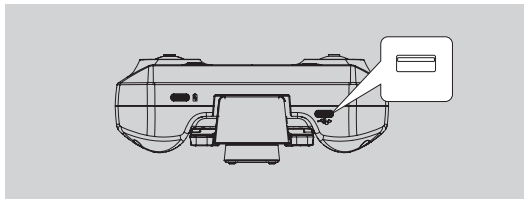
■ Install the Control Sticks



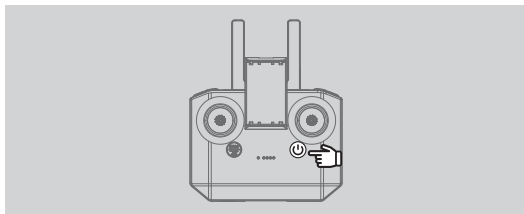
■ Place your mobile phone on the Mobile Phone Stand



- Connect the phone using a cable according to the phone model

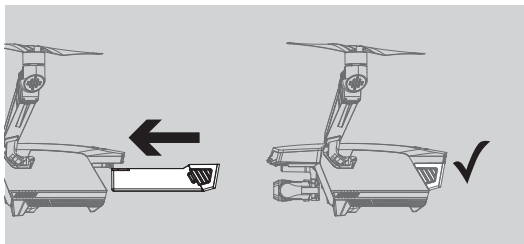


- Press and hold the power button for 2 seconds. The Controller will beep when it is successfully turned on

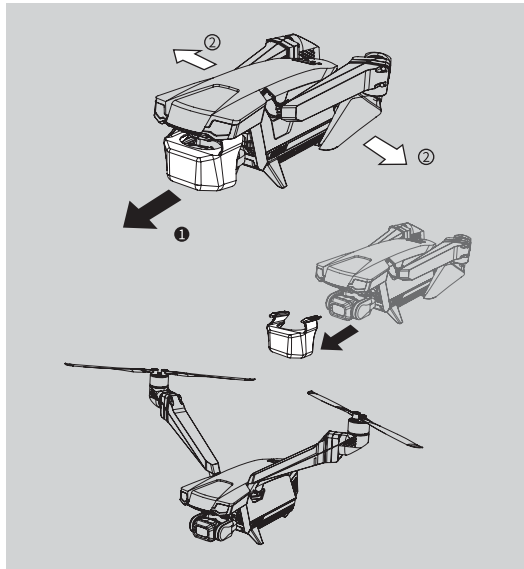


Step 4 Prepare the Drone

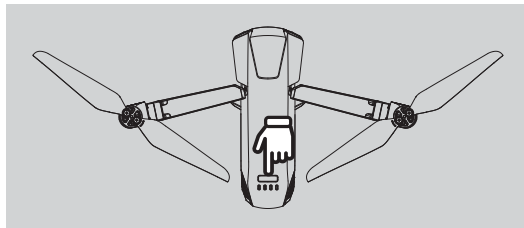
- Correctly install the battery following the direction illustrated below



- Remove the gimbal protector and extend the arms outward

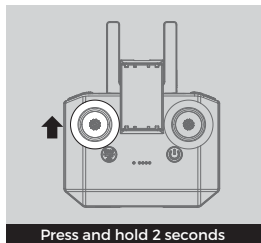


- Press and hold the power button for 2 seconds until the status indicator light blinks and wait for automatic pairing

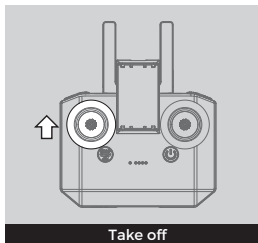


Step 5 Flight

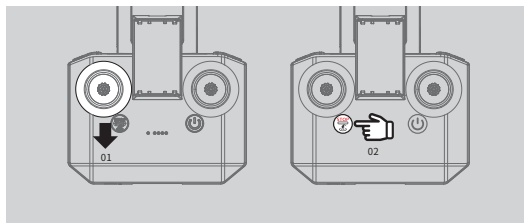
■ Unlock



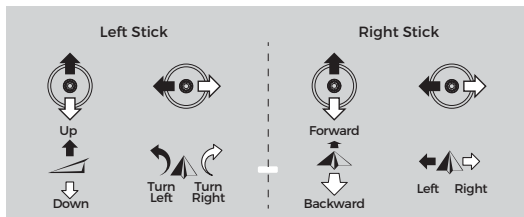
■ Take off



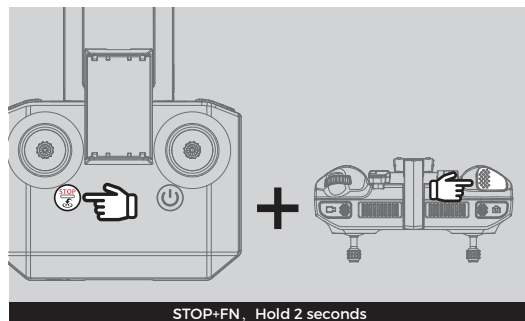
■ Landing



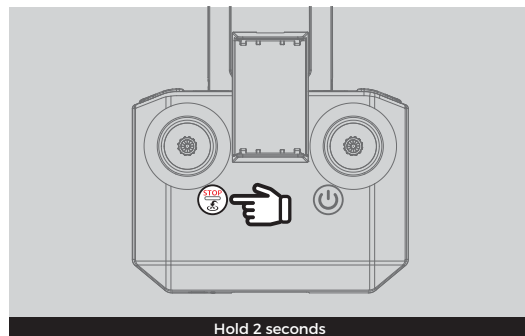
■ Controller Operations



■ Emergency Stop



■ Return to Home



■ LEDs Description

Status LED

Blinking Pattern		
	Alternately blinking red, green and yellow	System self-check
	Double blinking red	Remote control is not connected
	Double blinking blue	Wifi is not connected
	Double blinking green	Optical flow mode
	Blinking green	GPS mode
	Solid purple	ATTI mode
Warning		
	Blinking green continuously for 10 seconds	The returning point is recorded
	Double blinking yellow	Low battery in Optical flow mode
	Blinking yellow	Low battery in GPS
	Blinking purple	Low battery in ATTI
	Quickly blinking red	Serious low battery warning
	Solid white	Compass calibrate
	Quickly blinking white	IMU calibrate
	Blinking white continuously for 10 seconds	Server midpoint calibration
	Alternately blinking red and white	Calibration Failed
	Alternately blinking red and yellow	Need to calibrate the interfered compass
	Solid red	Equipment trouble
	Blinking red	Not horizontally placed, unable to take off
	Alternately blinking red and green	Upgrade in progress

BLASTOFF CONTROLLER

Blastoff Controller Level LEDs		
	Double blinking red	
	Blinking red	
	Solid green	
	Solid red	
	Solid white	
	Solid yellow	

Flight Safety

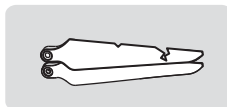
⚠ Attention:



Do not release or retrieve the drone with your hands.



Please make sure the bottom infrared sensor is clean before taking off.



Replace aging, broken or deformed propellers.



★ taking off on flat ground.

⊘ Improper Flying Environments:



Near crowds or dense buildings



Near strong magnetic fields



No-fly zones



In rain, fog, snow, lightning, hail, storms, strong wind, or any other extreme weather environments.

Please check the Disclaimer and Safety Instructions for more details at zerzero.tech/support/downloads. Please read it carefully before flying.

FCC Radiation Exposure Statement:

FALCON Mini complies with FCC radiation exposure limits set forth for an uncontrolled environment. This equipment should be installed and operated with minimum distance 20cm between the radiator & your body.

BLASTOFF CONTROLLER meets the government's requirements for exposure to radio waves. The guidelines are based on standards that were developed by independent scientific organizations through periodic and thorough evaluation of scientific studies. The standards include a substantial safety margin designed to assure the safety of all persons regardless of age or health. The SAR limit of USA (FCC) is 1.6 W/kg averaged. Device types: BLASTOFF CONTROLLER (FCC ID: 2AIDW-ZZ-F-2-001) has also been tested against this SAR limit. SAR information can be viewed on-line at: <http://www.fcc.gov/oet/ea/fccid/>. Please use the device FCC ID number for search. This device was tested simulation typical 0mm to body. To maintain compliance with FCC RF exposure requirements, use accessories should maintain a separation distance between the user's bodies mentioned above, the use of holsters and similar accessories should not contain metallic components in its assembly, the use of accessories that do not satisfy these requirements may not comply with FCC RF exposure requirements, and should be avoided.

FCC Warning

This device complies with Part 15 of the FCC Rules. Operation is subject to the following two conditions:

(1) This device may not cause harmful interference, and (2) this device must accept any interference received, including interference that may cause undesired operation.

Note: This equipment has been tested and found to comply with the limits for a Class B digital device, pursuant to part 15 of the FCC Rules. These limits are designed to provide reasonable protection against harmful interference in a residential installation. This equipment generates, uses and can radiate radio frequency energy and, if not installed and used in accordance with the instructions, may cause harmful interference to radio communications. However, there is no guarantee that interference will not occur in a particular installation. If this equipment does cause harmful interference to radio or television reception, which can be determined by turning the equipment off and on, the user is encouraged to try to correct the interference by one or more of the following measures:

—Reorient or relocate the receiving antenna.

—Increase the separation between the equipment and receiver.

—Connect the equipment into an outlet on a circuit different from that to which the receiver is connected.

—Consult the dealer or an experienced radio/TV technician for help.

NOTE 2: Any changes or modifications to this unit not expressly approved by the party responsible for compliance could void the user's authority to operate the equipment.

第一步 下载V-Copter App

■ 使用手机扫描下方二维码下载安装V-Copter App

了解更多信息，请前往官网下载《用户手册》。

*请使用IOS 12.0及以上版本或Android 9.0及以上版本



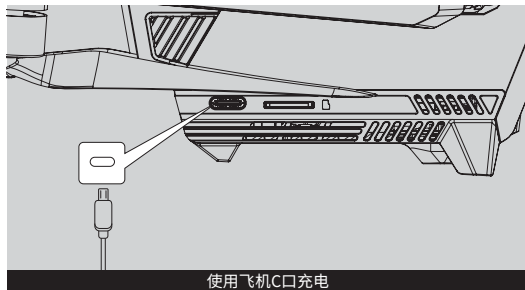
ios



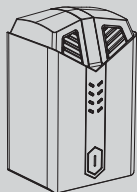
Android

第二步 充电

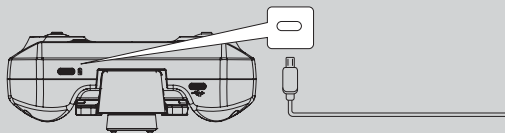
■ 首次飞行需给飞行器电池及遥控器充电以保证飞行体验



使用飞机C口充电

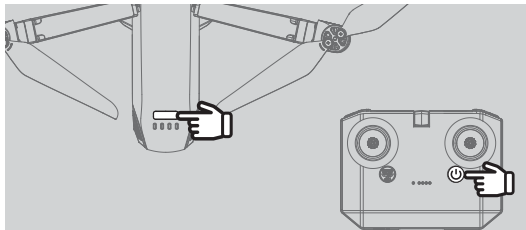


使用充电管家充电



(使用USB充电器连接飞行器/遥控器的充电接口(USB-C)至交流电源充电，电量指示灯如图规律闪烁，直至电量指示灯熄灭。开始充电即可唤醒设备)

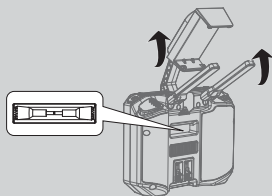
■ 查看电量



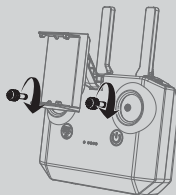
短按开关可查看当前电量

第三步 准备遥控器

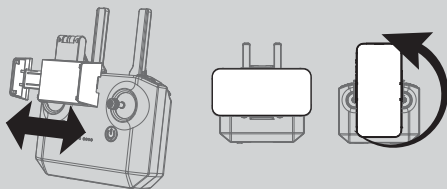
■ 向前展开手机支架和天线



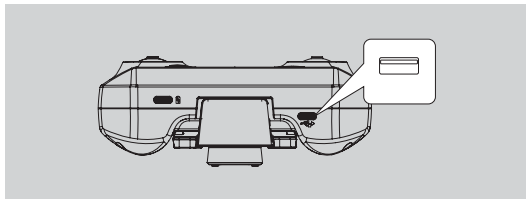
■ 取出背面收纳槽中的摇杆并旋转锁紧



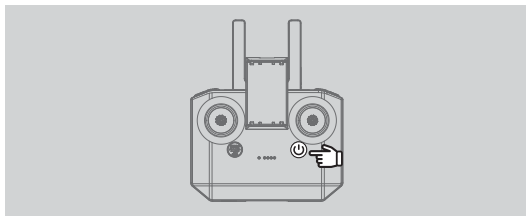
■ 固定手机



- 根据移动设备型号选择对应的数据线连接手机

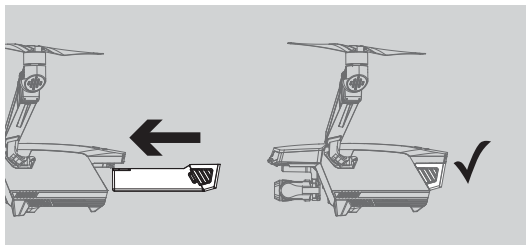


- 长按电源键2秒开机

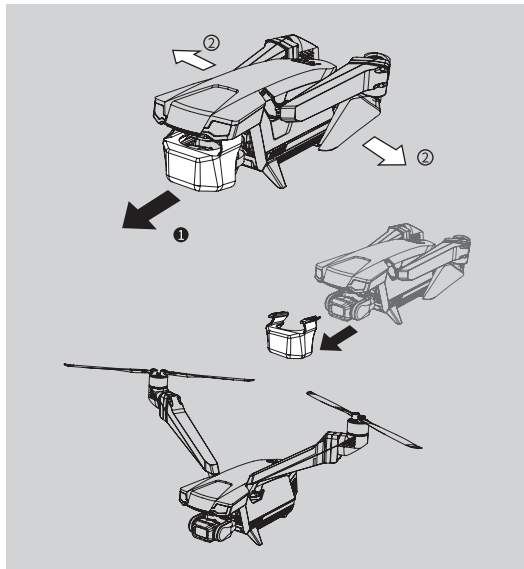


第四步 准备飞行器

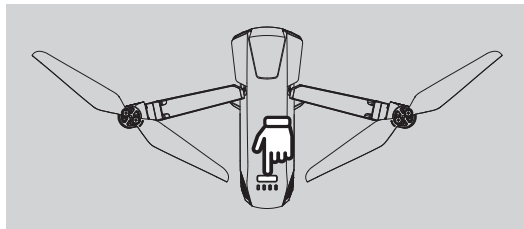
- 如图示正确安装电池，并听到“咔”一声



- 摘下云台保护罩并向外展开机臂

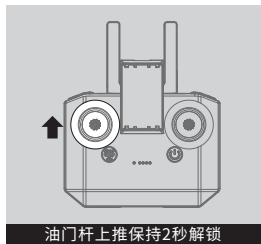


- 长按电源键2秒开机，等待飞行器自检并与遥控器自动配对

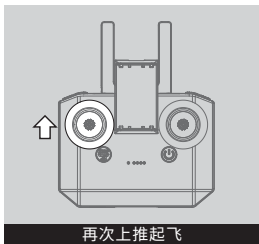


第五步 飞行操控

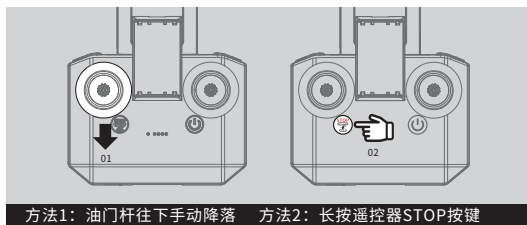
■ 解锁



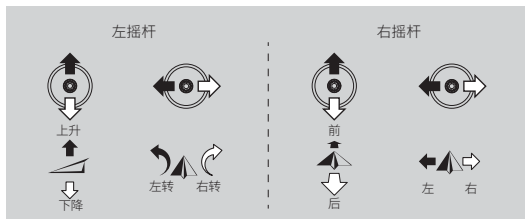
■ 起飞



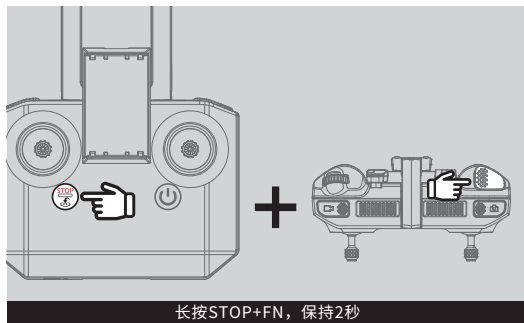
■ 降落



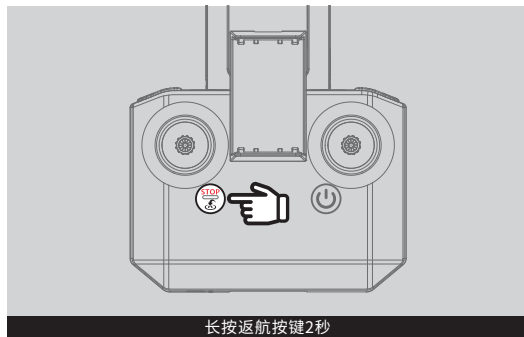
■ 遥控器操作方式



■ 紧急停机



■ 自动返航



灯语

飞行器

飞行状态		
	红绿黄交替闪烁	系统自检
	红灯双闪	遥控器未连接（遥控器模式下）
	蓝灯双闪	移动设备未连接（WiFi模式下）
	绿灯双闪	使用光流定位
	绿灯慢闪	使用GNSS定位
	紫灯常亮	姿态模式
提示与警告		
	绿灯连续闪烁10次	获取返航点成功
	黄灯双闪	光流模式下低电量提示
	黄灯慢闪	GNSS模式下低电量提示
	紫灯慢闪	姿态模式下低电量提示
	红灯快闪	严重低电量
	白灯常亮	指南针校准
	白灯快闪	IMU校准
	白灯快闪10次	舵机中点校准
	红白交替闪烁	校准失败
	红黄交替闪烁	需进行指南针校准
	红灯常亮	设备故障
	红灯慢闪	放置不平或传感器误差过大，无法解锁
	红绿交替闪烁	固件升级中

遥控器

遥控器状态		
	红灯双闪	对码中
	红灯单闪	飞行器未连接（失联状态）
	绿灯常亮	已连接，可正常飞行
	红灯常亮	遥控器故障
	白灯常亮	遥控器进入功能模式
	黄灯常亮	进入摇杆校准模式

飞行安全

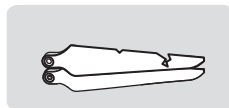
⚠ 注意事项：



请勿手持放飞或收回飞机。



起飞前，请确保底部红外传感器清洁无脏污。



及时更换老化、破损或变形的螺旋桨。



*选择平地降落飞机。

⊘ 不适用飞行环境：



人群、建筑密集的区域



强磁场环境



禁止飞行的区域或建筑物周围



雨雪、雾霾、雷电、大风、冰雹、沙尘等恶劣天气环境

更多安全事项请参考

zerozero.tech/support/downloads 上的免责声明和安全操作手册，飞行前请务必仔细阅读。