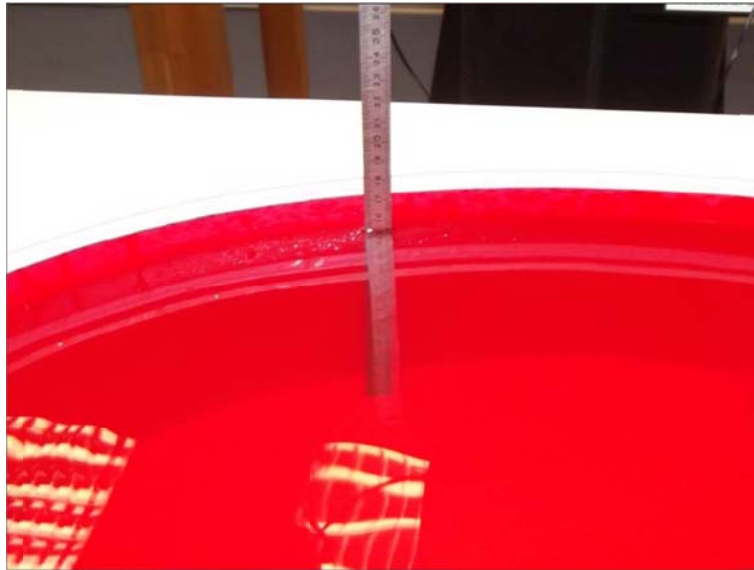
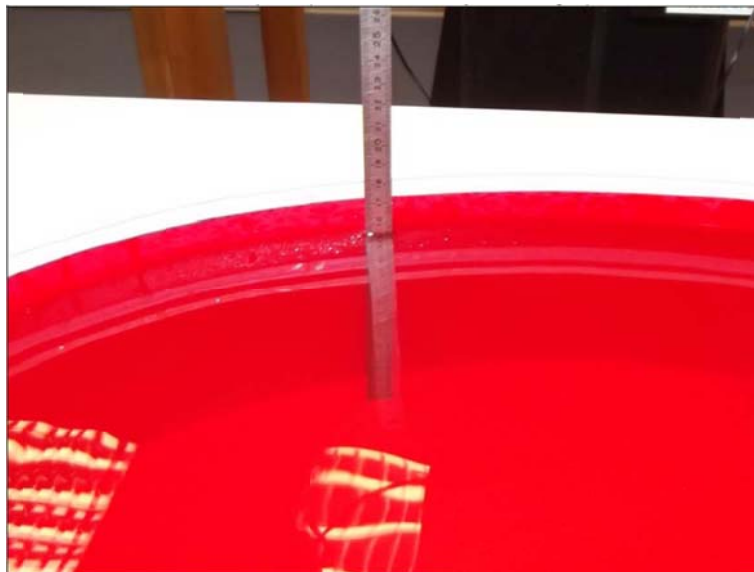


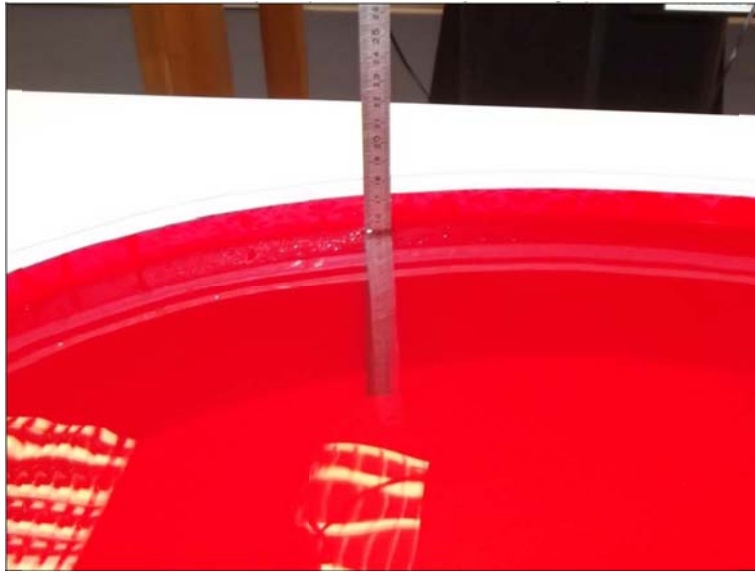
1. TEST SETUP PHOTOS



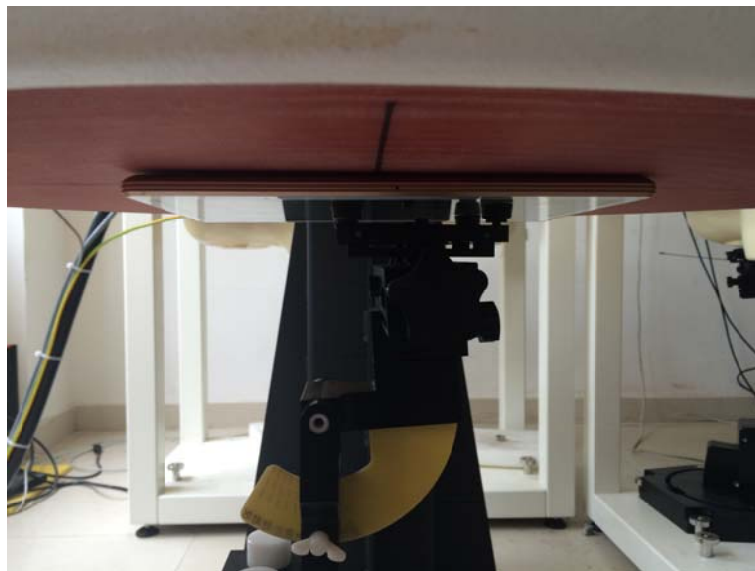
Photograph of the depth in the Body Phantom (850MHz)



Photograph of the depth in the Body Phantom (1900MHz)



Photograph of the depth in the Body Phantom (2450MHz)



Body-worn, the rear side of the EUT towards phantom (The distance was 0mm)



Body-worn, the top side of the EUT towards ground (The distance was 0mm)



Body-worn, the right side of the EUT towards ground (The distance was 0mm)