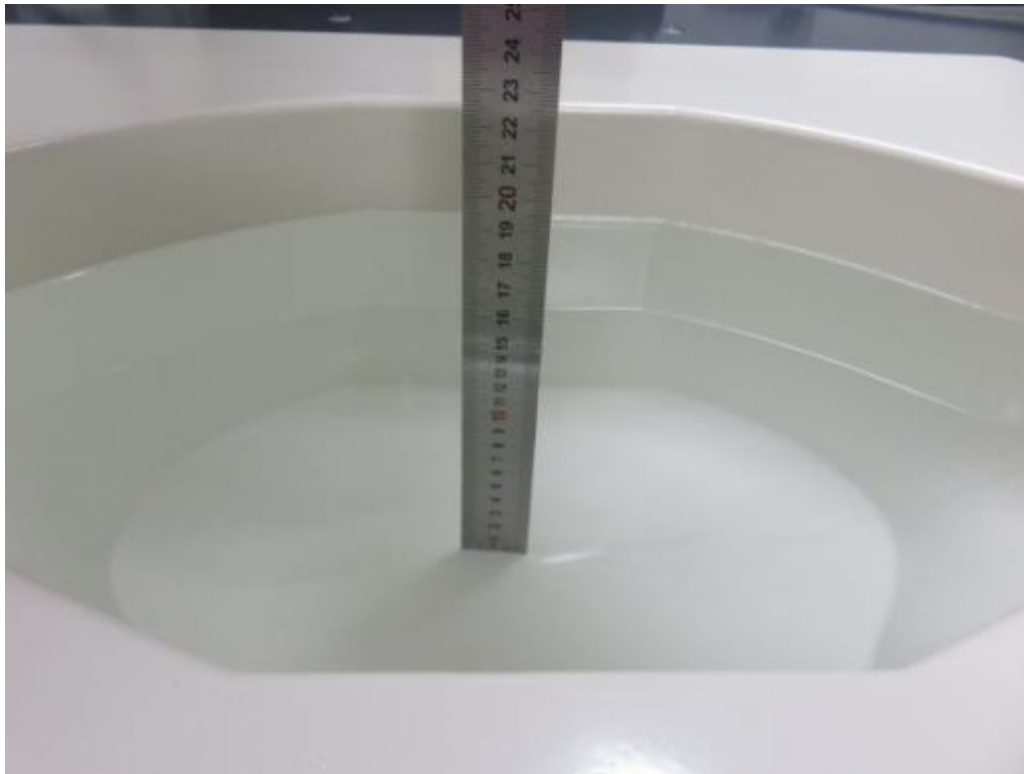
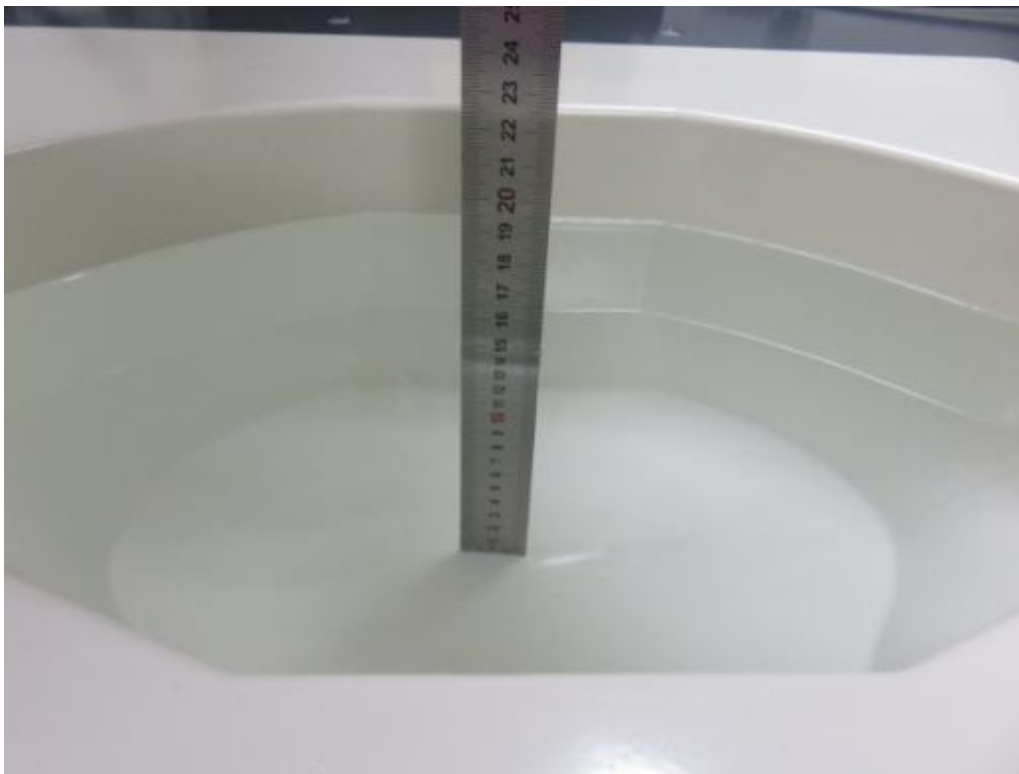


1. Photograph of Liquid Depth



Photograph of the depth in the Body Phantom (835MHz, 16.1cm depth)



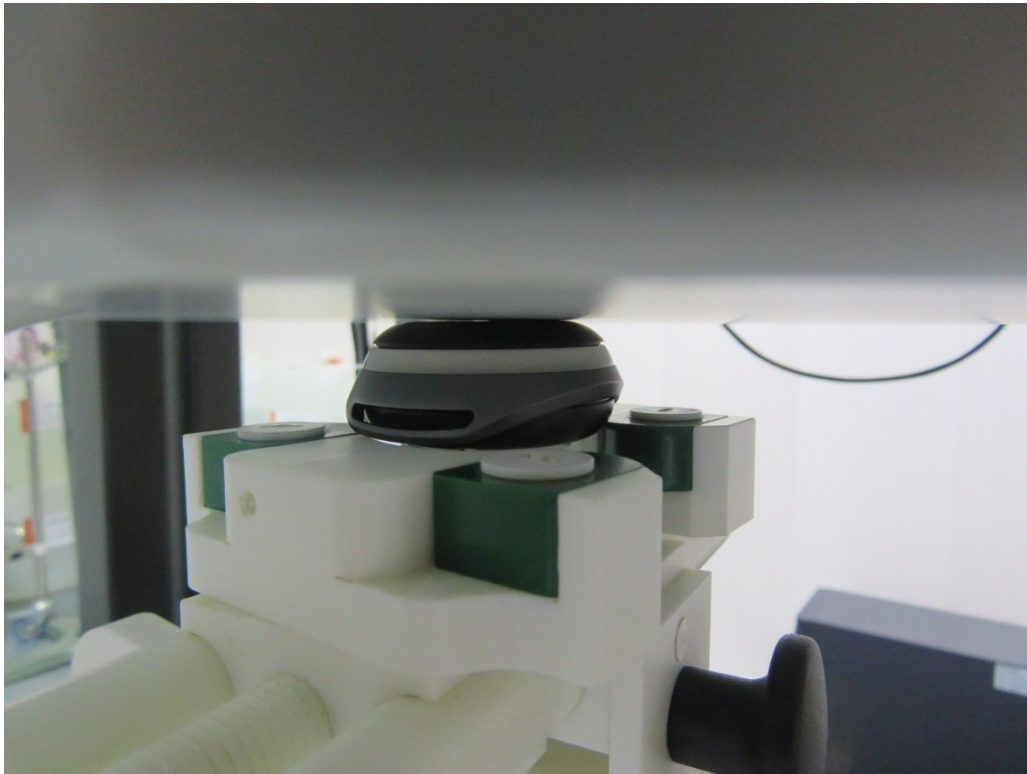
Photograph of the depth in the Body Phantom (1900MHz, 16.0cm depth)



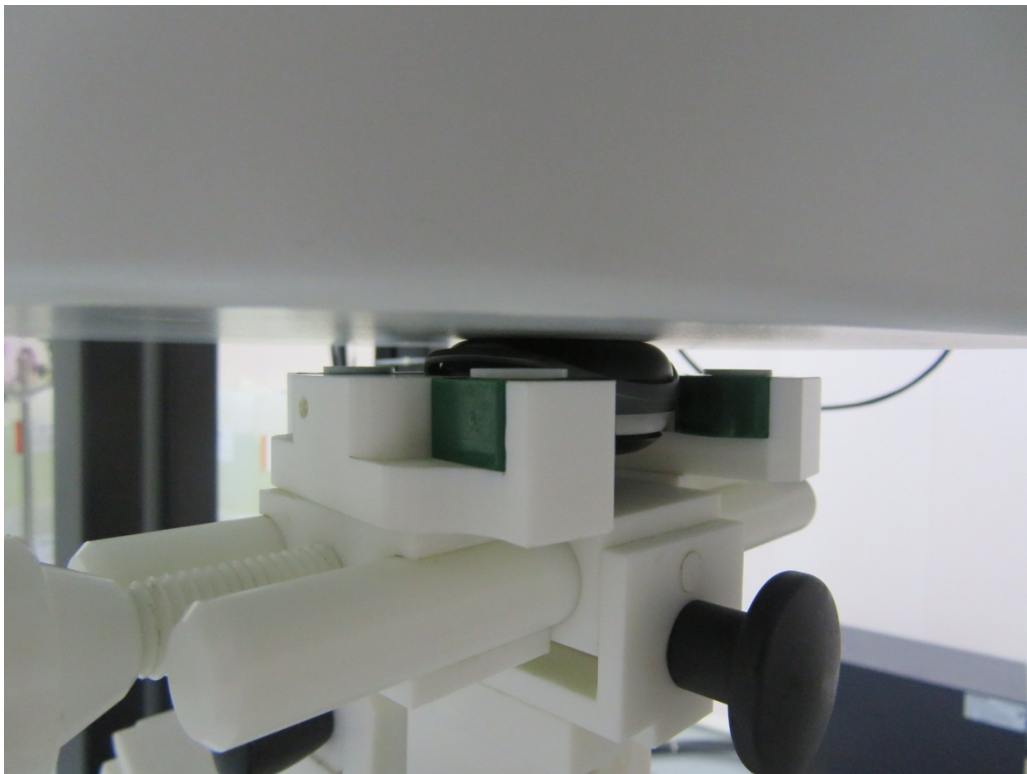
Photograph of the depth in the Body Phantom (2450MHz, 15.6cm depth)

2. Photograph of the Test Setup

0mm body Back Side Setup Photo



0mm body Front Side Setup Photo



3. EUT Photographs

