

Hello!

Thank you for purchasing ClicSmart. We are excited to bring convenience, security, and peace of mind into your home



Multiple Timers

Schedule your lights for automatic on/off control that functions when you are away from home



Manual Press

Use ClicSmart Switch as a manual switch by pressing the center button



Sunrise/Sunset

Schedule your lights around the sun to have lights turn on when the sun sets, and turn off when the sun rises



Portability

Move ClicSmart around your home, and take it when you move or travel



ClicSmart Cover Adapter

Make your ClicSmart fit your home's style



Motion Activation

Lights turn on/off automatically when you enter/exit rooms

* Activates when the room is dark

* Motion sensor range is 8-10 feet



Voice Control

Ask Alexa or Google to turn lights on & off through voice commands



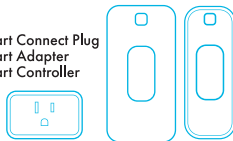
Phone Control

Control your lights with one tap of your phone

Package Contents

1x

ClicSmart Connect Plug
ClicSmart Adapter
ClicSmart Controller



2x

AA Batteries



1x

Quick Start Guide
Link To Manual & QR Code

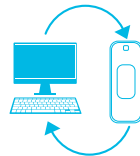


Works With



Warranty

Register your ClicSmart at www.mysimplysmarthome.com/register to activate your one-year warranty



simply
smart home

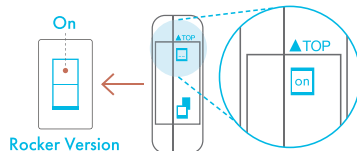
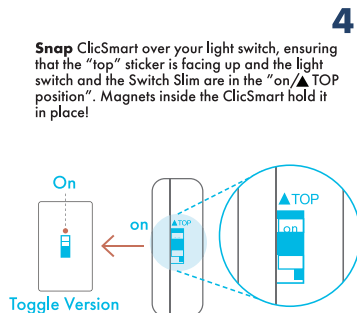
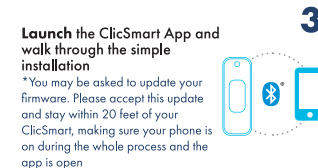
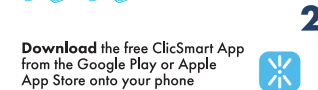
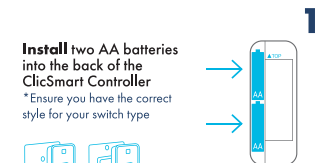
This device complies with part 15 of the FCC rules. Operation is subject to the following two conditions: (1) This device may not cause harmful interference, and (2) this device must accept any interference received, including Interference that may cause undesired operation



For further help or inquiries, visit:
www.mysimplysmarthome.com/support

©2021 My Simply Smart Home
All Rights Reserved
CLSMR001R or CLSMR001T

Installation



Troubleshooting

Q: My ClicSmart Controller or Connect Plug is not automatically detected during setup

A: Check to make sure the device's Blue LED is blinking before trying to add the Device. If you still experience difficulties, try the following steps to add manually:

1. In the App, select the + Icon to add devices
2. Select the device you're trying to add (ClicSmart Controller or ClicSmart Connect Plug)
3. Follow the on-screen instructions to add the device manually

Q: I am having trouble connecting my ClicSmart or Connect to my smartphone

A: Different phones may behave differently when connecting to ClicSmart. When experiencing difficulties, try the following steps:

1. Close the ClicSmart App completely, even from the background and restart the app - try to connect
2. Turn Bluetooth off and then on, and make sure you're connected to WiFi - try to connect
3. Reset the ClicSmart Controller by taking the batteries out and putting them back in - try to connect
4. Reset the ClicSmart Connect Plug by unplugging it and plugging it back in - try to connect

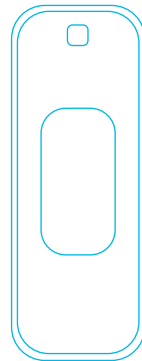
Q: I cannot control my ClicSmart Controller remotely or am having issues with Google Home / Alexa

A: For your ClicSmart Controller to gain remote access (including Google Home/Alexa), it **MUST** be linked to your ClicSmart Connect Plug and your ClicSmart Controller must be within Bluetooth range (20-30 feet) of your Connect Plug. Ensure your devices are paired by following the previous steps for connecting your ClicSmart Controller and Connect Plug.

For further help troubleshooting please contact us at:
www.mysimplismarthome.com/support

CLIC smart

Smart Lighting
Made Easy



Made By simply smart home

QUICK START GUIDE

QSG Jan 2021
Designed in the USA

FCC statement

This device complies with Part 15 of the FCC rules. Operation is subject to the following two conditions:

- 1) this device may not cause harmful interference, and
- 2) this device must accept any interference received, including interference that may cause undesired operation.

Note: This equipment has been tested and found to comply with the limits for a Class B digital device, pursuant to part 15 of the FCC Rules. These limits are designed to provide reasonable protection against harmful interference in a residential installation. This equipment generates uses and can radiate radio frequency energy and, if not installed and used in accordance with the instructions, may cause harmful interference to radio communications. However, there is no guarantee that interference will not occur in particular installation. If this equipment does cause harmful interference to radio or television reception, which can be determined by turning the equipment off and on, the user is encouraged to try to correct the interference by one or more of the following measures:

- Reorient or relocate the receiving antenna.
- Increase the separation between the equipment and receiver.
- Connect the equipment into an outlet on a circuit different from that to which the receiver is connected.
- Consult the dealer or an experienced radio/TV technician for help.

Changes or modifications not expressly approved by the party responsible for compliance could void the user's authority to operate the equipment.

FCC Radiation Exposure Statement

This device complies with FCC RF radiation exposure limits set forth for an uncontrolled environment. This transmitter must not be co-located or operating in conjunction with any other antenna or transmitter.