

# WIRELESS DIGITAL DOOR VIEWER USER MANUAL

Android users can download and install this App by scanning this code or searching “wddvApp” in Google Play.



iOS users can download and install this App by searching “wddvApp” in Apple App Store.



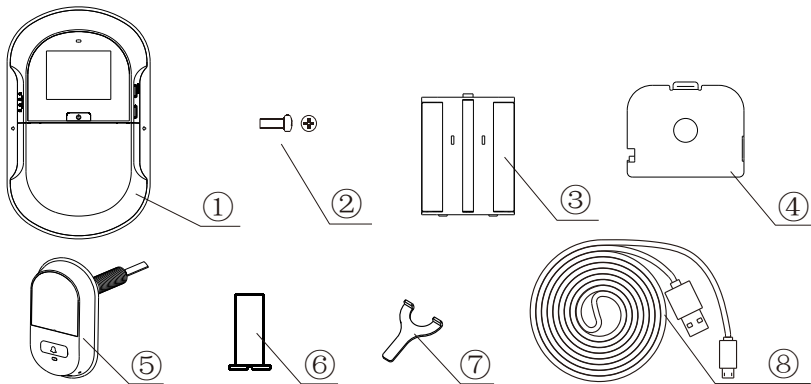
## **The following rights are reserved:**

- Any changes, without previous notice, made to either the functionality or appearance of this product will invalidate the guarantee.
- Use of this product in any environment or in any way other than specified here will also invalidate the guarantee.

## Attention

1. Please read this user manual carefully before using the product.
2. To avoid damage to the product or injury to the user, never attempt to repair or change the product or its accessories by yourself.
3. Do not use any chemicals to clean the product, such as Alcohol or Benzene thinner.
4. Do not install the product in high temperature, humidity, dust, smog or other harsh environments and do not expose to direct rain.
5. During installation, please handle carefully. To avoid breakage or injury to the user, do not pull the cable.
6. During installation, in order to ensure communication stability, please check Wi-Fi (connected to WDDV) signal strength.
7. Please charge the battery soon after the low-battery indicator shows, to avoid impact to the service life of the battery.
8. Please use 5V DC charger as other voltages may cause significant damage to the battery, product or your personal safety.

## Package List:



①WDDV

②1 fixing screw

③Rechargeable battery

④Holding plate

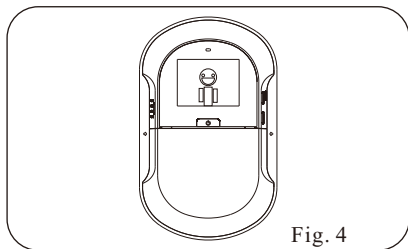
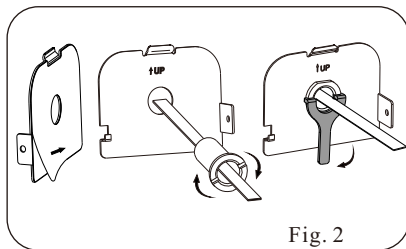
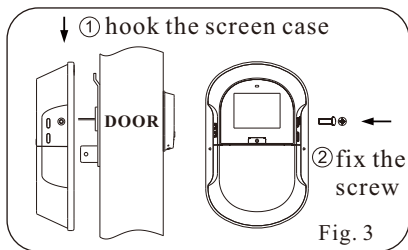
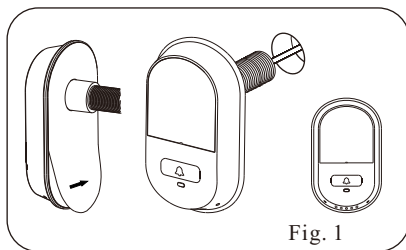
⑤Camera ⑥Locking barrel

⑦Tightening tool

⑧USB Cable (Battery charging only)

## Installation Instructions :

1. Replace the existing door viewer or drill a 14mm hole in the door at the required height. Peel off the 3M sticker from the back side of the camera, insert the camera from outside of the door, make sure the call button is at the bottom and adjust it to make the camera vertical (Fig.1).
2. Peel off the 3M sticker from the holding plate and fit it over the end of the lens, then screw the locking barrel on to the threaded sleeve of the camera and tighten it. This will hold the plate to the door. Make sure that the arrow on the plate points upwards (Fig.2).
3. The data cable should be fully plugged in at the back of the screen. The excess cable should be gently placed into the groove at the back of the screen.
4. Hook the screen over the bracket at the top of the plate and secure with one small screw through the hole at the side of screen case (Fig.3).



# Installation and Replacement of Battery:

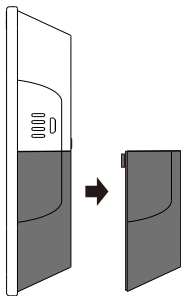


Fig. 1

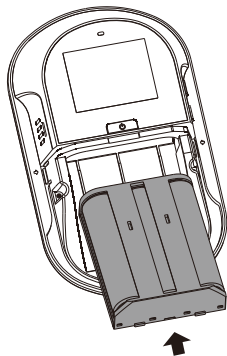


Fig. 2

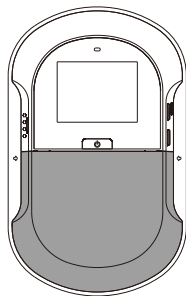


Fig. 3

## Installation of Battery:

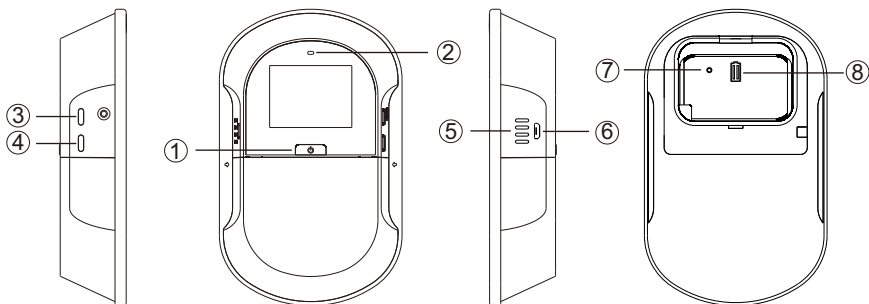
1. Press both sides of the battery lid and pull it outwards (Fig. 1).
2. Put in the lithium battery according to the arrow direction (Fig. 2).
3. Reattach the battery lid to the case.

### Attention

1. Please use the lithium battery supplied with WDDV, do not change or use other lithium batteries.
2. The battery has a consumable life of about 300-500 charge-discharge cycles. If the battery is dead, please buy the original batteries from the dealer.
3. When the battery runs out, the product will send a low-battery notification to the App, and the low-battery indicator in the unit's display will light up (when the Power button is pressed). In this case, please charge the battery.
4. Please use a 5V DC charger to charge the battery. Charging time differs depending on the charger's power rating. It will take 10-14 hours when using a standard mobile charger.
5. If the product is not in use for a long time, please remove the battery and store in a cool, dry place. Please note that even when the unit is off, the system still have a low current output and this will impact the service life the battery.
6. Dust and dirt may affect conductivity. Please occasionally clean the positive and negative metal contacts in the battery case.
7. Connecting the battery to any external conductors can cause a short circuit. Never attempt to do it.
8. Do not drop the unit, expose it to water or fire to avoid danger.
9. Please obey local laws and regulations for disposal of used batteries.

# Operation Instruction:

## Parts Specification:



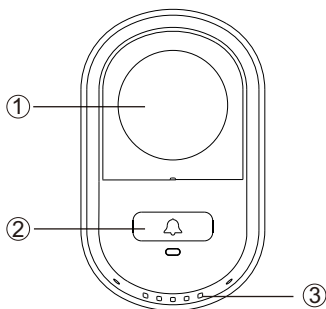
## Button Functions:

No	Interface and Button Name	Function
1	LCD Power button	Turn display on or off .
		Turning display on will cut the video streaming to the App.
2	Status indicator	During charging, red LED is on.
		When fully charged, blue LED is on and red LED is off.
		After power, if red LED flashes once, this indicates factory default mode.
		After power, if blue LED flashes once, this indicates user is registered.
		After pressing once the pairing button, purple LED flashes, which indicates pairing mode.
3	Emergency button	Press activates emergency mode (a warning push is sent to the App)
4	Pairing button	Press once the pairing button, wait till purple LED flashes, and user registration mode activates.
		Press and hold for 3 seconds, WDDV reset.
5	Speaker	Play the doorbell ringtone.
6	USB socket	Plug in the USB cable to charge the battery.
7	Factory default button	Press and hold for 3 seconds to delete all users' information.
8	Camera socket	Plug in the camera.

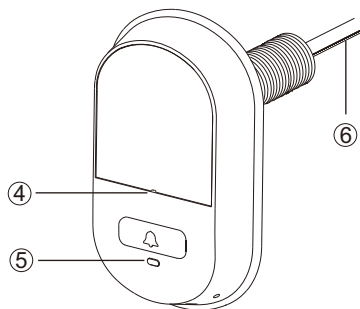
## Operation Instruction:

### Parts Specification:

Camera front view



Camera side view



1.Camera

2. Call button

3. Speaker

4.Microphone

5. Status indicator

6.Data cable

### Button Functions:

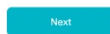
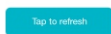
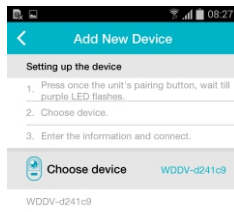
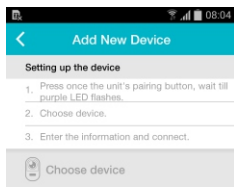
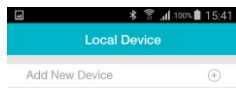
Button No	Interface and Button Name	Function
2	Call button	Press this button to call host.
5	Status indicator	Pressing Call button, LED flashes.
		When the call is connected, LED lights up.
		When the call ends, LED turns off.

# Operation Instruction:

## Product Pairing:

1. Connect your phone to a local Wi-Fi network. (5GHz bandwidth is not supported)
2. Install WDDV App on your smartphone and then start pairing process.
3. Press once the pairing button, wait till purple LED flashes.

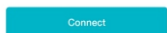
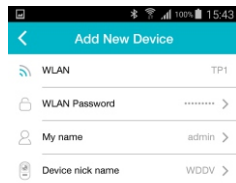
## Android system:



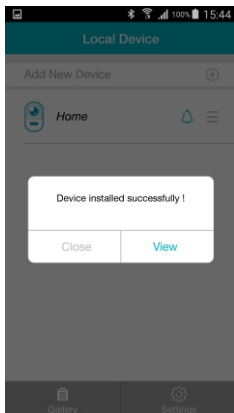
Press “Add New Device”.

Press “Tap to refresh”.

Choose the device.

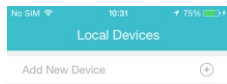


Input the information and press “Connect”.

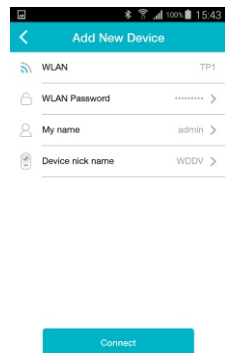


Device installed successfully.

## iOS system:



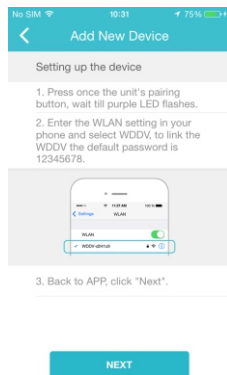
Press "Add New Device".



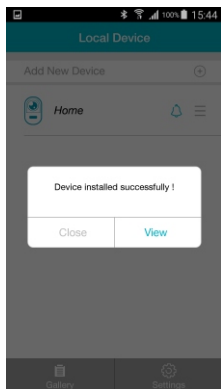
Input the information and press "Connect".



Enter the WLAN setting in your phone and select WDDV, to link the WDDV the default password is 12345678.



Back to APP,click"NEXT"



Device installed successfully.

Remark: The first user paired to a certain WDDV will automatically be assigned administrator rights to display the user list and delete other users.



## **Operation Instruction:**

### **FAQ:**

1.Q: The network connection is unstable.

A: Check whether Wi-Fi signal is OK, using RSSI strength indicator in the App (normally 2 or more signal strength lines are required).

2.Q: The smartphone can't receive calls.

A: Check whether "Do not disturb" is used in the App.

3.Q: How do I change the Wi-Fi network or password?

A: Press factory default button on the back side of the WDDV, and delete all users' information and re-register.

4.Q: How many users can be connected to a single WDDV and how many WDDVS can be connected to a single App?

A: You may connect up to 8 users to a single WDDV and up to 5 WDDVS to a single App.

5.Q: The new user pairing fails.

A: On the "Add New Device" page in the App, check whether WLAN name is consistent with the Wi-Fi network name. If not, please change the settings in the App and try to pair again.

## **Product Specification:**

Fits door thickness: 38-110mm

Fits barrel hole: 14-26mm

Sensor: VGA (0.3 Mega Pixel)

LCD screen: 2.0" TFT

Night vision infrared wavelengths: 940nm

Wireless standard: IEEE 802.11b/g/n

Battery: 7800mA/H Lithium battery

Size: 146mm\*90mm\*32.5mm

Weight: 310g

# WARNING

Make sure you assemble the door bell camera carefully.

**DO NOT** undo the camera or pull the camera cables.

If the camera cables are pulled or folded this could damage the product.

## Correct Assembly

When fitting the door bell camera, first unscrew the camera barrel and then peel off the 3M sticker from the back of the camera ( Fig. 1 ).

Stick the camera to the outside of the door making sure the door bell is at the bottom ( Fig. 2 ).

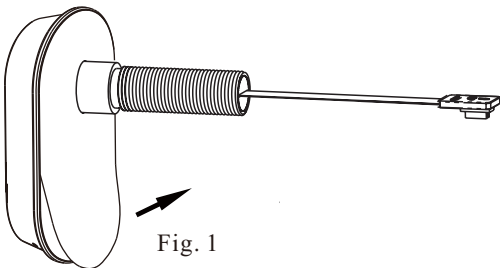


Fig. 1

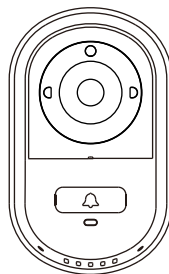


Fig. 2

## Incorrect Assembly

**DO NOT** fit the door bell camera without sticking to the door using the 3M sticker.

This would cause the door bell to rotate and will damage the cables and may cause the unit to fail ( Fig. 3 ).

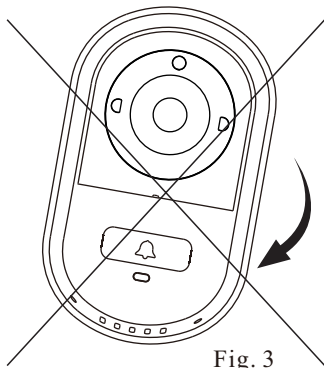


Fig. 3

This device complies with Part 15 of the FCC Rules. Operation is subject to the following two conditions: (1) this device may not cause harmful interference, and (2) this device must accept any interference received, including interference that may cause undesired operation.

Changes or modifications not expressly approved by the party responsible for compliance could void the user's authority to operate the equipment.

NOTE: This equipment has been tested and found to comply with the limits for a Class B digital device, pursuant to Part 15 of the FCC Rules. These limits are designed to provide reasonable protection against harmful interference in a residential installation. This equipment generates, uses instructions, may cause harmful interference to radio communications. However, there is no guarantee that interference will not occur in a particular installation. If this equipment does cause harmful interference to radio or television reception, which can be determined by turning the equipment off and on, the user is encouraged to try to correct the interference by one or more of the following measures:

- Reorient or relocate the receiving antenna.
- Increase the separation between the equipment and receiver.
- Connect the equipment into an outlet on a circuit different from that to which the receiver is connected.
- Consult the dealer or an experienced radio/TV technician for help.

The distance between user and products should be no less than 20cm