

# The operation is simple Only three steps

操作简单 仅需三步

1

扫描二维码或到APP市场、  
网站下载安装摩也放松馆APP

2

安装贴片----开机（长按3秒）  
----把设备贴在不同按摩位置

3

打开APP----输入手机号码注册----系统自动检测设备  
----勾选设备----点击右上角的“确定”----  
点击“放松馆”，选择按摩动作即可开始放松之旅

苹果

ios7.0及  
以上系统

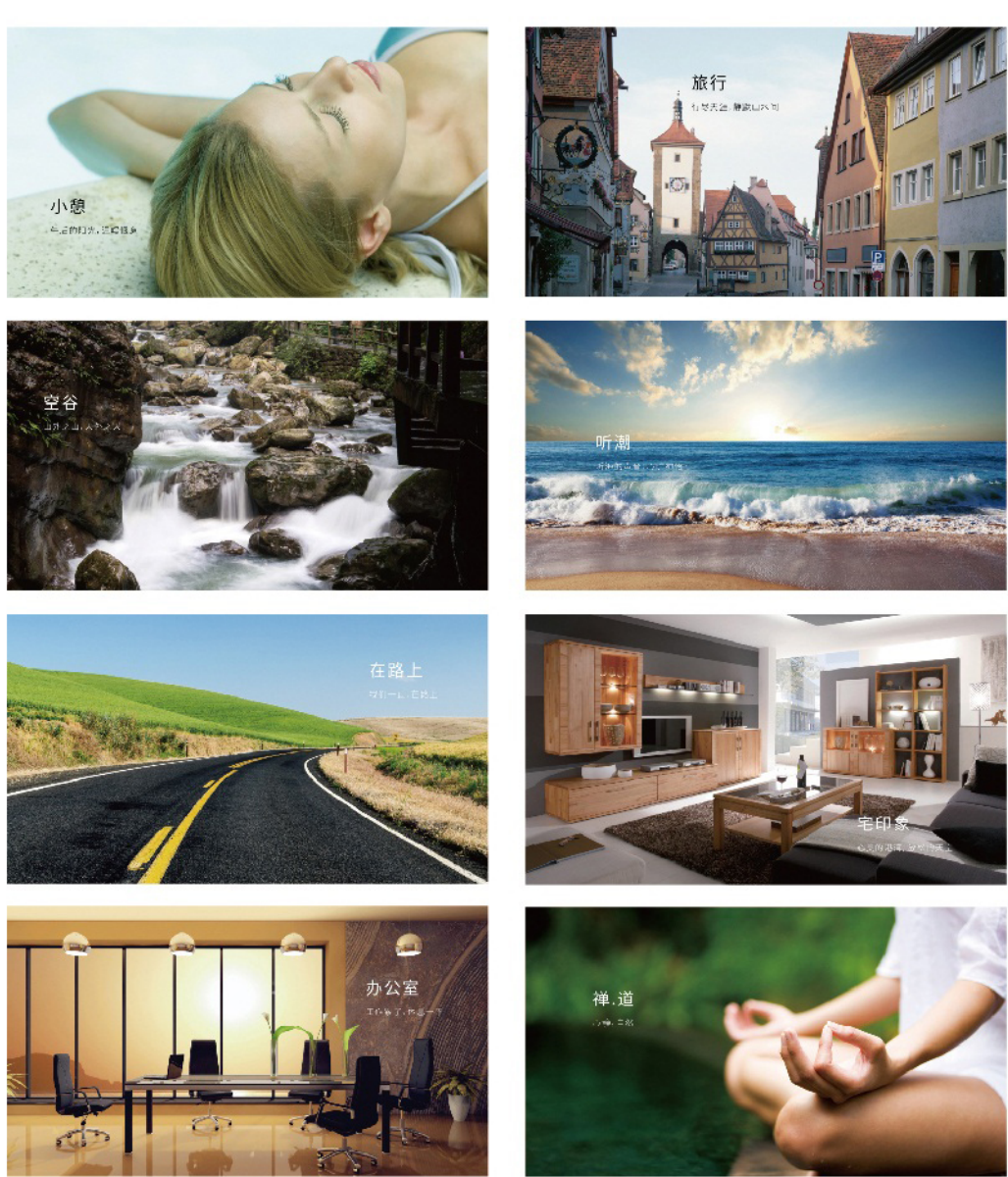
安卓

安卓4.3及  
以上系统

www.mooyee.net

# Eight kinds of default scene mode

8种预设场景模式



# Intelligent control

智能掌控

更智能的蓝牙控制技术，支持多设备同时按摩不同的部位



丰富的按摩模式



- 6种基本动作模式

揉

按

挤

抚

肘

捶
- 4种中医理疗模式

火罐

刮痧

推拿

针灸

# Relieve Fatigue Prevent Strain And Relax

缓解疲劳 / 预防劳损 / 放松心情



# An intelligent hardware based on the Internet

一款基于互联网的智能硬件

- 采用一体式设计，轻巧便携，时尚绚丽；
- 使用手感细腻的德国进口硅胶；
- 符合人体工学的曲线弧度；
- 内置聚合物环保锂电池，充电随心。
- 由App控制，操作简单，使用方便；
- 基于虚拟放松馆的构想，实现了生活场景、音乐和按摩的深度融合；
- 预置6种基本动作、4种中医理疗动作和8种场景动作；
- 可根据用户的按摩习惯，定期云端更新按摩动作；
- 拥有丰富的在线音乐库，可满足不同类型音乐爱好者的需求；
- 充分运用蓝牙控制技术，支持多设备同时按摩不同的部位。

- Use the integrated design, lightweight and portable, fashionable;
- Use exquisite feeling silica gel imported from Germany;
- Accord with ergonomic curve radian;
- Polymer lithium battery, charging as wishes.
- Controlled by the App, the operation is simple and easy.
- Based on the idea of virtual relax pavilion, deeply integrated the life scenes, music, and massage;
- Preset six basic movements, four kinds of traditional Chinese medicine therapy action and eight scenes;
- According to the user's massage habits, regularly update the cloud for the massage action;
- Has a lot of online music, meet the demand of different types of music lovers;
- Fully using Bluetooth controlling technology, support various parts of the massage and multiple devices at the same time,.

# Operating Principle

工作原理

将仿生物微电流以低频方式输出，利用电极片进行传导，刺激肌肉及肌肉神经末梢感觉接收器，肌肉就会无意识的收缩活动。不同的电流信号，模拟出类似锤、捏、揉、敲等物理按摩动作，可放松肌肉、缓解疲劳、促进血液循环、减轻肌肉酸痛、舒缓压力、改善亚健康。

Use a low-frequency output of biomimetic micro electric current and conduct with electrodes. Stimulate the feeling receiver of muscle and nerve endings, the contraction of muscle will be unconscious activated. Different current signal simulates different physical massage action like hammer, knead and knock. It can relax muscle, relieve fatigue, promote blood circulation, relieve muscle ache, relieve pressure and improve the sub-health.

# Specific parameters

具体参数

型号：M1	Type: M1
材质：进口软质硅胶	Material: imported soft silica gel
尺寸：141mm*55mm*12mm	Size: 141mm*55mm*12mm
连接方式：蓝牙	Connection mode: Bluetooth
电池电压：2.8V~4.2V	Battery voltage: 2.8 V~4.2 V
电池容量：220mAh	Battery capacity: 220 mAh
工作温度：-40℃~85℃	Working temperature: - 40 ℃ ~ 85 ℃
工作时间：300分钟	Working time: 300 minutes
充电时间：120分钟	Charging time: 120 minutes

# Operating Principle

设备要求

基于蓝牙4.0的智能手机，IOS7.0、Android4.3及以上的操作系统  
Based on the smart phone with Bluetooth 4.0, IOS7.0, Android4.3 and above the operating system

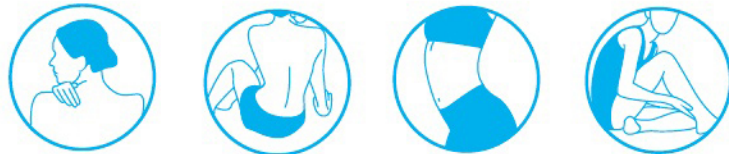


mooyee

# The best massage position

最佳按摩部位位置

肩部、背部、腰部、四肢  
Shoulder, back, waist, arms and legs



# Prohibited massage position

禁忌按摩部位位置

头部、颈部、胸部、腹部  
Head, neck, chest, abdomen



# Avoided crowd

忌用人群

心脏病患者、孕妇、儿童  
Heart disease patients, pregnant and children

# FCC Statement

This device complies with Part 15 of the FCC rules. Operation is subject to the following two conditions: 1) this device may not cause harmful interference, and 2) this device must accept any interference received, including interference that may cause undesired operation.

Note: This equipment has been tested and found to comply with the limits for a Class B digital device, pursuant to part 15 of the FCC Rules. These limits are designed to provide reasonable protection against harmful interference in a residential installation. This equipment generates uses and can radiate radio frequency energy and, if not installed and used in accordance with the instructions, may cause harmful interference to radio communications. However, there is no guarantee that interference will not occur in particular installation. If this equipment does cause harmful interference to radio or television reception, which can be determined by turning the equipment off and on, the user is encouraged to try to correct the interference by one or more of the following measures:

- Reorient or relocate the receiving antenna.
- Increase the separation between the equipment and receiver.
- Connect the equipment into an outlet on a circuit different from that to which the receiver is connected.
- Consult the dealer or an experienced radio/TV technician for help.

Changes or modifications not expressly approved by the party responsible for compliance could void the user's authority to operate the equipment.