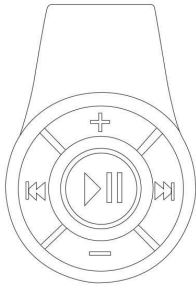
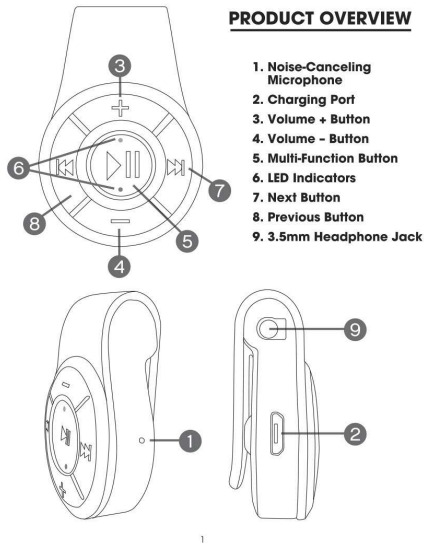


Bluetooth Audio receiver



User Guide

PRODUCT OVERVIEW



1. Noise-Canceling Microphone
2. Charging Port
3. Volume + Button
4. Volume - Button
5. Multi-Function Button
6. LED Indicators
7. Next Button
8. Previous Button
9. 3.5mm Headphone Jack

CHARGING BLUETOOTH AUDIO RECEIVER

The Bluetooth Audio Receiver has an internal rechargeable battery. The battery must be fully charged prior to use. Red LED will flash continuously when battery power is low. Charging time is approximately 1.5hrs. Your Bluetooth Audio Receiver cannot be used while charging.

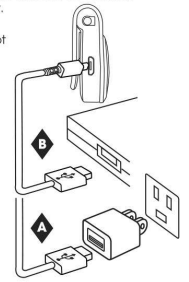
Red light ON – Charging
Blue light ON – Fully charged

A Via AC Adapter Wall Charger

Using the provided Micro USB cable, connect the Bluetooth Audio Receiver (Micro USB port) to the AC Adapter (USB port).

B Via Computer

Using the provided Micro USB cable, connect the Bluetooth Audio Receiver to the computer or laptop (USB port).



PAIRING THE BLUETOOTH AUDIO RECEIVER TO BLUETOOTH DEVICE

Make sure the Bluetooth function is available on your cell phone. Specific pairing procedures will be different depending on different cell phone. For detailed information, please refer to your cell phone's User Guide.

- If no device connection is made about 1 minutes of the Bluetooth Audio Receiver being switched on, the bluetooth audio receiver will enter into a dormant state, after about 6 minutes, the Bluetooth Audio Receiver will automatically be switched off to save power.

2

PAIRING TO BLUETOOTH DEVICE (CONTINUED):

- After a successful pairing devices will memorize each. Therefore, no pairing will be needed next time.
1. Keep the distance between the cell phone and the Bluetooth Audio Receiver within 3 feet (for pairing only).
 2. Power ON the unit by pressing and holding the Multi-Function Button for 5 seconds until LED Indicator begins to flash red and blue.
 3. The voice prompt will sound meaning that your unit is on and is Bluetooth discoverable by your mobile device.
 4. Activate the Bluetooth function of the cell phone, to search for the Bluetooth devices. After finishing the search, select "GriffinBT" in the device list displayed. If your phone asks for a passcode, enter 0000 (four zeros).
 5. Press "yes" or "enter" key to confirm the successful pairing.
 6. After the successful connection, the LED indicator will flash blue.
 7. Power off your Audio Receiver and turn off your Bluetooth device.
 8. If pairing was unsuccessful, repeat steps 1-4 above.

CONNECTING TO OTHER BLUETOOTH DEVICES

- Note:** Your Bluetooth Audio Receiver can only be connected to one Bluetooth device at a time.
1. In order to connect to the other Bluetooth device, you must first close the current Bluetooth connection.
 2. Follow the above steps (under **PAIRING TO BLUETOOTH DEVICE**) to pair your Bluetooth Audio Receiver to another Bluetooth device.

3

POWER ON/OFF

TO POWER ON: Press the Multi-Function Button for 5 seconds. When powered ON blue LED will turn on and voice prompt will sound.

TO POWER OFF: Press the Multi-Function Button for 4 seconds. When powered OFF red LED will flash and voice prompt will sound.

BLUETOOTH AUDIO RECEIVER CONTROLS

CALLS

Answer a call
Press the Multi-function Button once.

Reject a call
Press and hold Multi-Function Button for 2 seconds during an incoming call (tone will sound).

End a call
Press the Multi-function Button once.

Redial the last call
Double-press the Multi-function Button.

Voice Dialing
Press Multi-Function Button for 2 seconds while device is on stand-by. A tone prompt voice dialing will sound.

TROUBLESHOOTING

- Make sure your headset is turned on and is properly charged.
- Make sure the Bluetooth Audio Receiver is in pairing mode when you try to pair it with your mobile device. If the device is left with blue & red LED flashing alternatively but not being paired for

4

about 7 minutes, the headset will turn off automatically. You will have to turn on the headset then enter the pairing mode again.

- Make sure to activate the Bluetooth function of your mobile device. Please refer to your mobile phone's User Guide.
- Make sure the Bluetooth Audio Receiver is within a maximum of 30 feet (about 10 meters) of your mobile device and there are no obstructions, such as walls or other electronic devices interfering.

IMPORTANT SAFEGUARDS

- Do not use this unit for anything other than its intended use.
- Keep the unit away from heat source, direct sunlight, humidity, water or any other liquid.
- Do not expose the device to extremely high/low temperatures, as it may damage the battery.
- Do not operate the unit if it has been wet or moist to prevent against electric shock and/or injury to yourself and damage to the unit.
- Do not use the unit if it has been dropped or damaged in any way.
- Repairs to electrical equipment should only be performed by a qualified electrician. Improper repairs may place the user at serious risk.
- Keep the unit out of reach of children. This unit is not a toy.

SPECIFICATIONS

BLUETOOTH version: 4.1
Distance: up to 30ft (10m)
Battery: Rechargeable Lithium Polymer Battery 100mAh
Standby time: up to 180 hours
Charging time: approx. 1.5 hours
Play time: 4-6 hours (depending on the earphone or aux device connected with this transmitter)

BATTERY DISPOSAL:

This product contains a lithium polymer battery. Lithium Polymer batteries are environmentally safe when fully discharged. Please refer to your local and state laws for battery disposal procedures.



FCC Warning

This device complies with part 15 of the FCC Rules. Operation is subject to the following two conditions: (1) This device may not cause harmful interference, and (2) this device must accept any interference received, including interference that may cause undesired operation.

Any changes or modifications to this unit not expressly approved by the party responsible for compliance could void the user's authority to operate the equipment.