

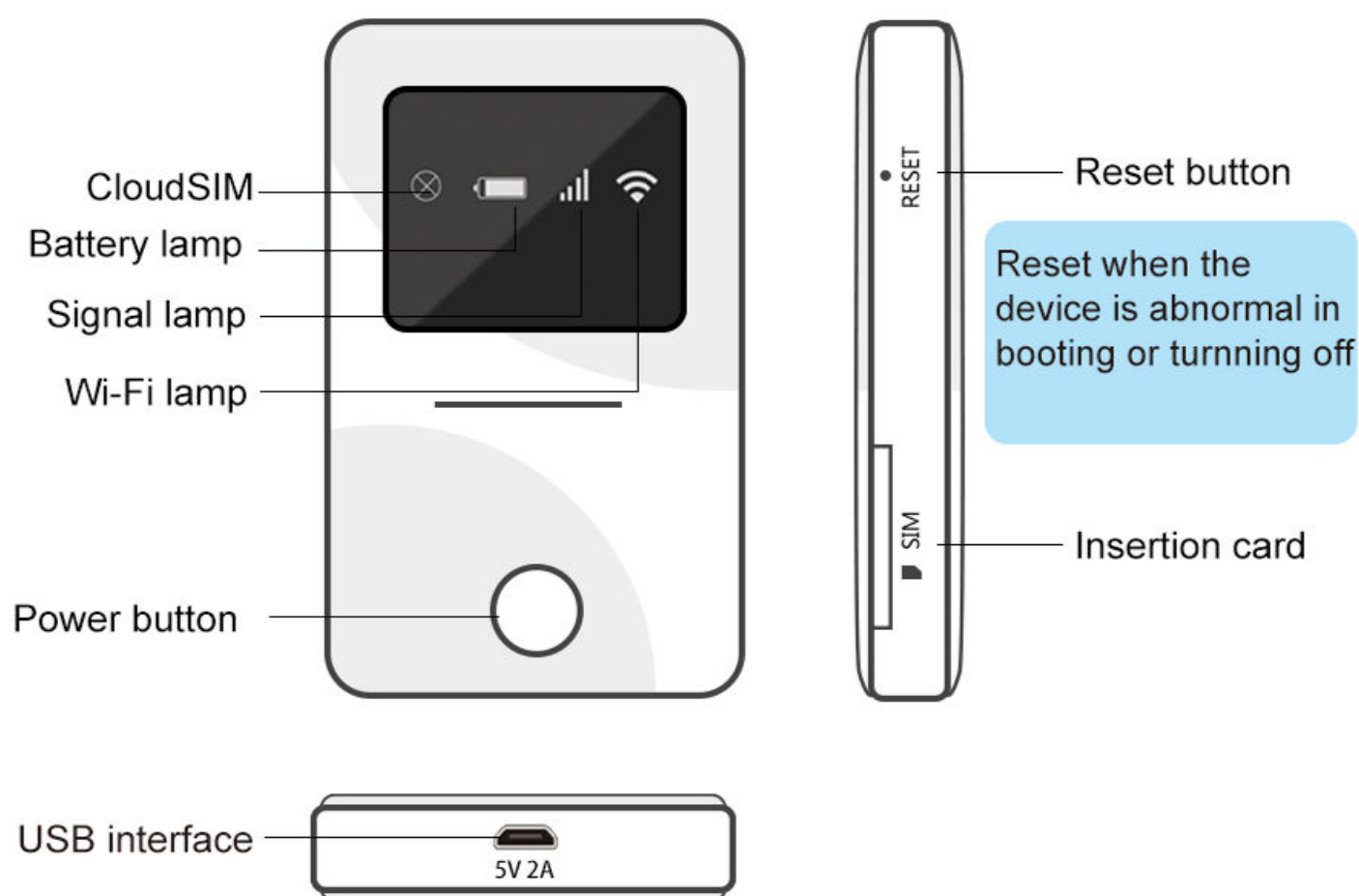
A large, light gray globe with white grid lines serves as a background. A large, white, stylized letter 'U' is superimposed over the globe, partially obscured by the title bar.

4G FREE ROAMING

Quick Start Guide

LDTOUCH

Product Diagram



* Lamp Description

No	Name	Status	Function
①	CloudSIM	On/Blink/ Normally On	indicating the order and the card insertion status
②	Battery Lamp	On/Blink/ Normally On	indicating the charging status (if it blinks, the charging is in progress, and if the green is normally on, the charging is finished)
③	Signal Lamp	On/Blink/ Normally On	indicating the signal status
④	Wi-Fi Lamp	On/Blink/ Normally On	indicating the WiFi hotspot status

1 Boot

long press the power button until the lamp ② is on, when the lamp ④ blinks, it indicates that the WiFi hotspot is started. When lamp ③ blinks, the Internet searching is started. When the lamps ①②③④ are normally on concurrently, it indicates that the signal is connected normally and the booting is successful.

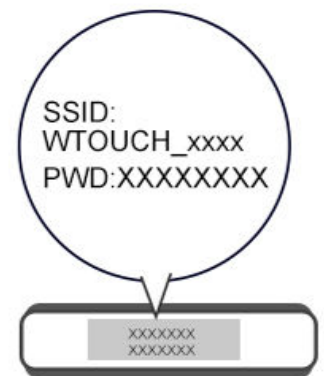
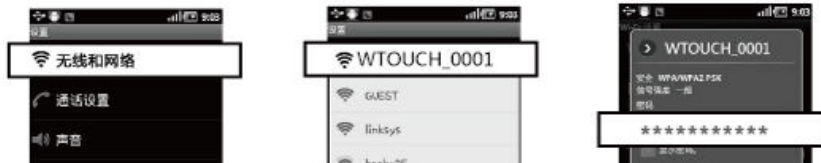


status of normal connection

2 Access

1.Direct access

- ① set in the phone for access by directly finding the device number and inputting the password.



account number and password (on top of the device)

- ② APP access (for Android only, and check the detailed description)

APP download link: www.world-touch.net/app



Scan to download the APP

2.Access by inserting card

insert a standard Micro-sim card from side of the device, and the card must not be small card that has been cut into small size or a card with a tray. When the lamp ① CloudSIM is off, it indicates that the card is inserted successfully



card insertion setup (side of the device)

3 Charging

please use 5V/2A charger to charge. If the battery lamp blinks during the charging, it indicates that the charging is in progress. hours.



USB charging hole

If the battery lamp blinks in red during the use, please charge it timely or stop the use.

4 Turning off

long press the power button until the lamp ① blinks in red, when all lamps goes off, the device is turned off successfully.

Or enter the APP-More-Turn off

Specifications

Name----	4G FREE ROAMING
Model----	WT
Dimension----	116.4mmX64.6mmX21.6mm
WiFi----	2.4Hz/802.11b/g/n
GSM----	850/900/1800/1900(MHz)
WCDMA----	BAND1/2/5/8
LTE(FDD/TDD)----	BAND1/3/5/8/17/19/20/38/39/40/41
Charger interface----	Micro USB charging hole
Battery capacity----	6000MAh
Theoretical service life----	12 hours
Maximum number of users connected----	5
Product list--	Device (including the battery), user manual, packing box and USB cable



Points for Attention

- For 4G FREE ROAMING, the Internet will not be connected in places without signal.
- If the device goes hot during the use, it would be a normal phenomenon, but the heat dissipation should also be guaranteed.

TEL: 852-2802-2191

Address: 33rd Floor, Shui On Centre, No.6-8 Harbour Road, Wanchai, Hong Kong



WORLDTOUCH



WOR

FCC RF EXPOSURE INFORMATION:

WARNING!! Read this information before using your phone

In August 1986 the Federal Communications Commission (FCC) of the United States with its action in Report and Order FCC 96-326 adopted an updated safety standard for human exposure to radio frequency (RF) electromagnetic energy emitted by FCC regulated transmitters. Those guidelines are consistent with the safety standard previously set by both U.S. and international standards bodies. The design of this phone complies with the FCC guidelines and these international standards. Use only the supplied or an approved antenna. Unauthorized antennas, modifications, or attachments could impair call quality, damage the phone, or result in violation of FCC regulations. Do not use the phone with a damaged antenna. If a damaged antenna comes into contact with the skin, a minor burn may result. Please contact your local dealer for replacement antenna.

BODY-WORN OPERATION:

This device was tested for typical body-worn operations with the back/front of the phone kept 0cm from the body. To comply with FCC RF exposure requirements, a minimum separation distance of 0cm must be maintained between the user's body and the back/front of the phone, including the antenna. Third-party belt-clips, holsters and similar accessories containing metallic components shall not be used. Body-worn accessories

that cannot maintain 0cm separation distance between the user's body and the back/front of the phone, and have not been tested for typical body-worn operations may not comply with FCC RF exposure limits and should be avoided.

For more information about RF exposure, please visit the FCC website at www.fcc.gov

Your wireless handheld portable telephone is a low power radio transmitter and receiver. When it is ON, it receives and also sends out radio frequency (RF) signals. In August, 1996, the Federal Communications Commission (FCC) adopted RF exposure guidelines with safety levels for handheld wireless phones. Those guidelines are consistent with the safety standards previously set by both U.S. and international standards bodies:

<ANSI C95.1> (1992) / <NCRP Report 86> (1986) / <ICNIRP> (1999)

Those standards were based on comprehensive and periodic evaluations of the relevant scientific literature. For example, over 120 scientists, engineers, and physicians from universities, government health agencies, and industry reviewed the available body of research to develop the ANSI Standard (C95.1). Nevertheless, we recommend that you use a hands-free kit with your phone (such as an earpiece or headset) to avoid potential exposure to RF energy. The design of your phone complies with the FCC guidelines (and those standards).

Use only the supplied or an approved replacement antenna. Unauthorized antennas, modifications, or attachments could damage the phone and may violate FCC regulations.

NORMAL POSITION:

Hold the phone as you would any other telephone with the antenna pointed up and over your shoulder.

RF Exposure Information:

This product is compliance to FCC RF Exposure requirements and refers to FCC website <https://apps.fcc.gov/oetcf/eas/reports/GenericSearch.cfm> search for FCC ID: 2A18UWT

This device complies with part 15 of the FCC rules. Operation is subject to the following two conditions:

(1) this device may not cause harmful interference, and

(2) this device must accept any interference received, including interference that may cause undesired operation.

NOTE: The manufacturer is not responsible for any radio or TV interference caused by unauthorized modifications to this equipment. Such modifications could void the user's authority to operate the equipment.

NOTE: This equipment has been tested and found to comply with the limits for a Class B digital device, pursuant to part 15 of the FCC Rules. These limits are designed to provide reasonable protection against harmful interference in a residential installation. This equipment generates uses and can radiate radio frequency energy and, if not installed and used in accordance with the instructions, may cause harmful interference to radio communications. However, there is no guarantee that interference will not occur in a particular installation. If this equipment does cause harmful interference to radio or television reception, which can be determined by turning the equipment off and on, the user is encouraged to try to correct the interference by one or more of the following measures:

- Reorient or relocate the receiving antenna.
- Increase the separation between the equipment and receiver.
- Connect the equipment into an outlet on a circuit different from that to which the receiver is connected.
- Consult the dealer or an experienced radio/TV technician for help

Do not use the device with the environment which below minimum -10°C or over maximum 50°C, the device may not work.

Changes or modifications to this unit not expressly approved by the party responsible for compliance could void the user's authority to operate the equipment.

Ad Hoc function is supported but not able to operate on non-US frequencies.