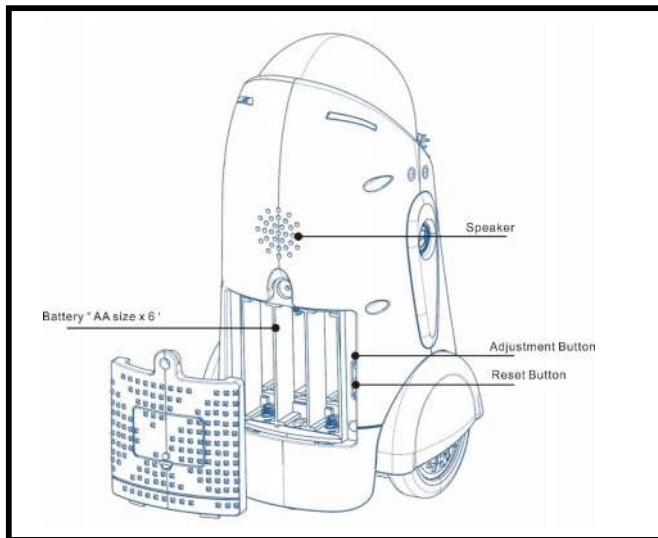


# Introduction

Thank you for purchasing Watch Dogs 2 Wrench Jr. Robot by Ubisoft Inc.

Wrench Jr. Robot is a device controlled “Watcher Bot” that can turn, spin, move forward or backwards. It can speak and show different emotions. You can customize your robot with the many removable parts and stickers. You can also have Wrench Jr. Robot say over fifteen pre-recorded sentences as well as transform your own voice through your device and Wrench Jr. Robot will relay your message through its own speaker in a robotic voice.

Take a few minutes to look through this user manual.



Please note the following when operating Wrench Jr. Robot:

- Do not immerse Wrench Jr. Robot or any parts in water or any other form of liquid.
- Do not drop, throw or kick Wrench Jr. Robot as this may damage mechanical functions.
- Do not allow the robot to roam freely or leave unattended near edges from which Wrench Jr. Robot could fall.

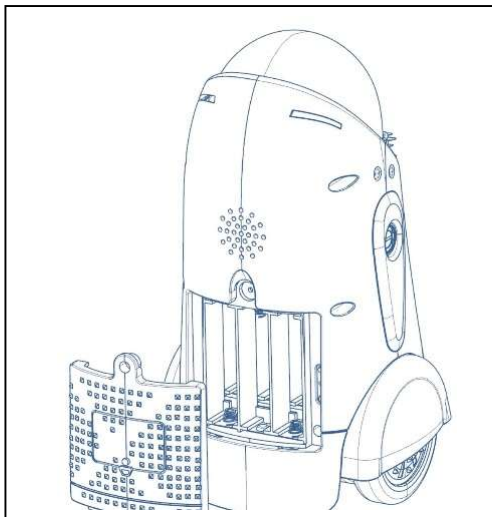
# Battery Information

## Installing or changing batteries in Watch Dogs 2 Wrench Jr. Robot:

1. To change the batteries, carefully hold Wrench Jr. Robot with the battery compartment facing upward. Do not place Wrench Jr. Robot where it could easily fall. Wrench Jr. Robot requires 6 x “AA” size batteries (not included).
2. Use a screwdriver (not included) to remove the screw on the battery compartment cover located on the back of the Wrench Junior.
3. Insert the batteries according to the diagram. Ensure that the positive and negative polarities match the illustrations inside the battery compartment.
4. Replace the battery compartment cover and tighten screw using the screwdriver. Do not over-tighten.

## Important Battery Information:

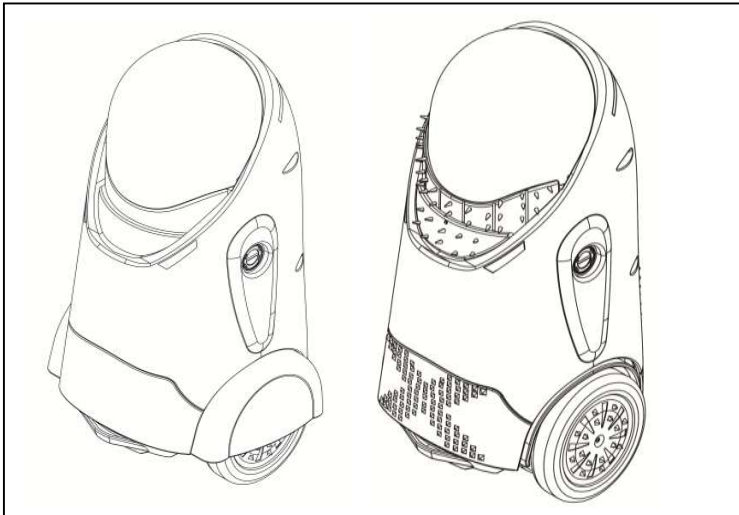
- Use only fresh batteries of the required size and recommended type.
- Do not mix old and new batteries, different types of batteries or rechargeable batteries of different capacities.
- Please respect the correct polarity, (+) and (-).
- Replace all batteries of the same type/brand at the same time.
- The supply terminals are not to be short-circuited.
- Remove exhausted batteries from the Wrench Jr. Robot.
- Remove batteries if the Wrench Jr. Robot is not going to be played with for some time.



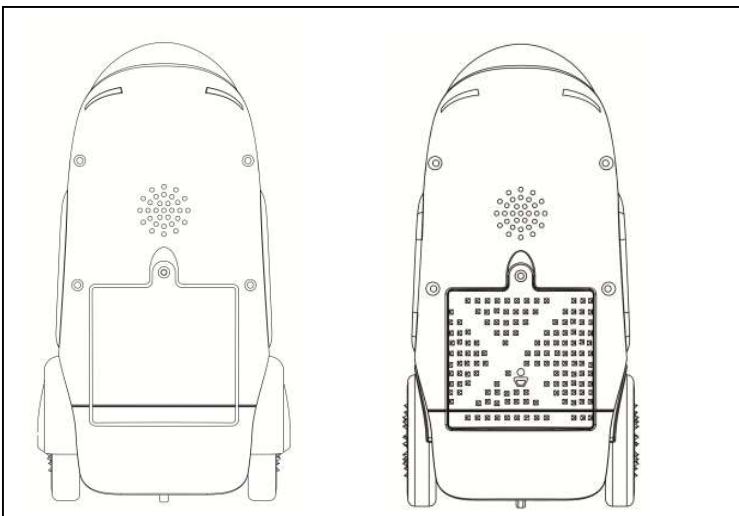
## Low Battery Indicators:

When the batteries grow weak, Wrench Jr. Robot will start to move slowly. When this occurs, power OFF and replace all batteries.

## Watch Dogs 2 Wrench Jr. Robot Overview Front



## Watch Dogs 2 Wrench Jr. Robot Overview Back



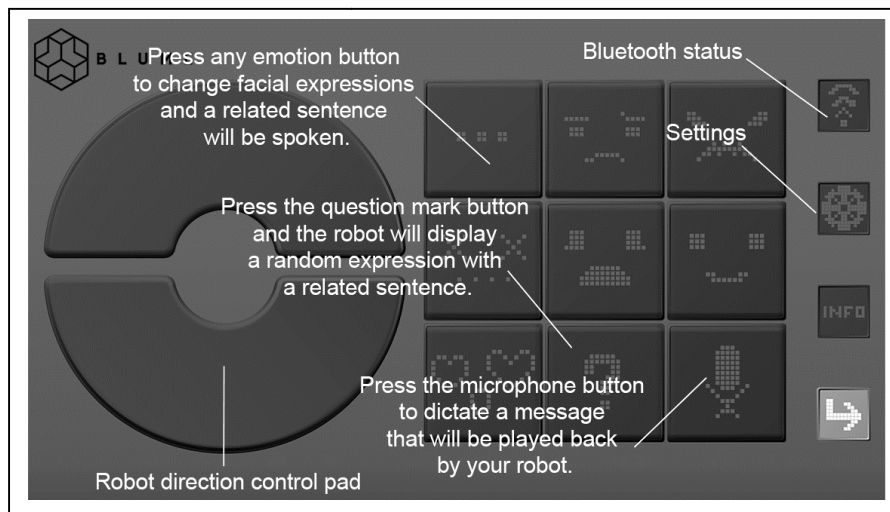
## Getting Started

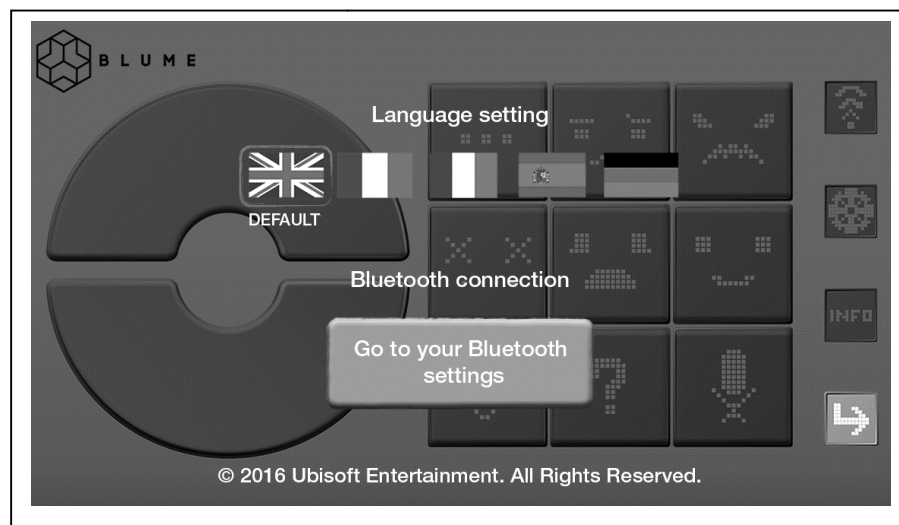
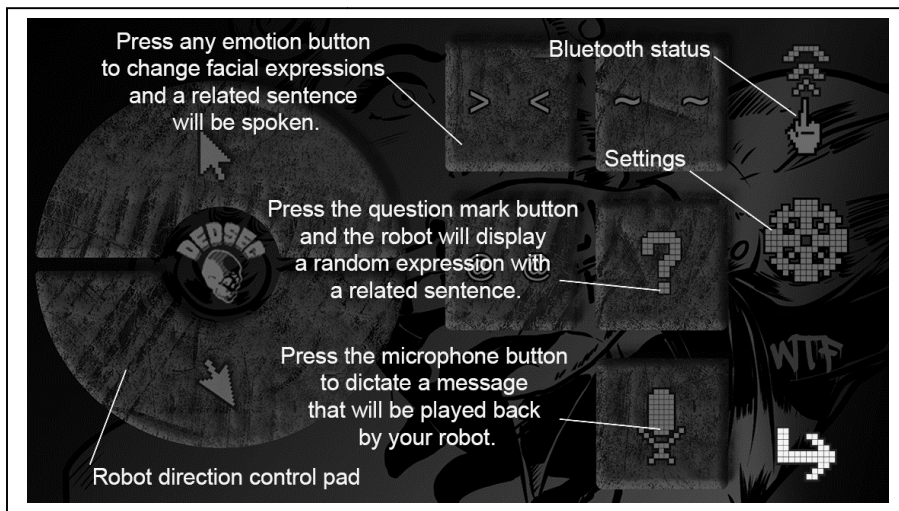
- 1) With the batteries inserted, locate the power switch on its bottom and activate Wrench Jr. Robot by toggling it to ON.
- 2) Carefully place Wrench Jr. Robot upright on its wheels on a flat and smooth surface, away from edges and obstacles.

Watch Dogs' Wrench Jr. Robot has two different modes that can be activated. To access the different modes, select either the "Watcher Bot" or the "Wrench Jr." at the start of the App.

## Activities

- 1) Use the App to drive Wrench Jr. Robot forward, backward, left or right.
- 2) Select an emoticon from the emotion button pad to change the facial expressions and activate Wrench Jr. Robot to speak. (Some emotion buttons may have more than one related sentence).
- 3) The question mark button will display a random expression with a related sentence.
- 4) Use the microphone button to dictate a message that can be converted to the robot's voice and played back by Wrench Jr. Robot.







## APP

### Functionality

Watch Dogs' 2 Wrench Jr. Robot is equipped with BLE connectivity and can interact wirelessly with an iPhone 5 and above or select Android BLE enabled devices. Apple devices must be running IOS7 or above. Android devices must be running Android 5 BLE or above.

|   |  |
|---|--|
| <div> <div> <h3>Downloading the App</h3> <div> <div>For iPhone</div> <div>  <div> Go to the App Store and search for Watch Dogs 2 Wrench Jr. Robot. Alternatively, scan the QR Code below. Then, click download. </div> <div>QR Code</div> </div> </div> <div> <div>For Android</div> <div>  <div> Go to the Google Play Store and search for Watch Dogs 2 Wrench Jr. Robot. Alternatively, scan the QR Code below. Then, click download. </div> <div>QR Code</div> </div> </div> </div> </div> | <div> <div> <h3>Connecting to Wrench Jr. Robot with your device</h3> <ol style="list-style-type: none"> <li>1. Turn Wrench Jr. Robot On as instructed in Getting Started</li> <li>2. Open the Watch Dogs 2 Wrench Jr. Robot App on your device</li> <li>3. The App will bring up your Wrench Jr.'s ID in a list of available devices.</li> <li>4. Follow the on-screen instructions to augment Wrench Jr.'s motion and sound.</li> </ol> </div> </div> |
|---|--|



## Care & Maintenance

- 1) Keep the unit clean by wiping it with a slightly damp cloth.
- 2) Keep the unit out of direct sunlight and away from any direct heat source.
- 3) Remove the batteries when the unit is not in use for an extended period of time.
- 4) Do not drop the unit on hard surfaces, and do not expose the unit to moisture or water.

## Troubleshooting

If for some reason the activity stops working or malfunctions, please follow these steps:

1. Check that the Bluetooth function on your smart device is turned on. If you are still having difficulties, try restarting both Wrench Jr. Robot and your device.
2. Turn the unit OFF, using the power switch located on the bottom.
3. Interrupt the power supply by removing the batteries.
4. Let the unit stand for a few minutes, then replace the batteries.
5. Turn the unit ON. The unit should now be ready to play again.
6. If the product still does not work, replace with a new set of batteries.

Imported by: Ubisoft Inc. 625 Third Street, San Francisco, California, 94107

Imported by: Ubisoft 28 Rue Armand Carrel, 93108, Montreuil-sous-Bois Cedex France.

© 2016 Ubisoft Entertainment. All Rights Reserved. Ubisoft and the Ubisoft logo are trademarks of Ubisoft Entertainment in the U.S. and/or other countries.

### **NOTE:**

THIS EQUIPMENT HAS BEEN TESTED AND FOUND TO COMPLY WITH THE LIMITS FOR A CLASS B DIGITAL DEVICE, PURSUANT TO PART 15 OF THE FCC RULES. THESE LIMITS ARE DESIGNED TO PROVIDE REASONABLE PROTECTION AGAINST HARMFUL INTERFERENCE IN A RESIDENTIAL INSTALLATION.

THIS EQUIPMENT GENERATES, USES AND CAN RADIATE RADIO FREQUENCY ENERGY AND, IF NOT INSTALLED AND USED IN ACCORDANCE WITH THE INSTRUCTIONS, MAY CAUSE HARMFUL INTERFERENCE TO RADIO COMMUNICATIONS. HOWEVER, THERE IS NO GUARANTEE THAT INTERFERENCE WILL NOT OCCUR IN A PARTICULAR INSTALLATION. IF THIS EQUIPMENT DOES CAUSE HARMFUL INTERFERENCE TO

RADIO OR TELEVISION RECEPTION, WHICH CAN BE DETERMINED BY TURNING THE EQUIPMENT OFF AND ON, THE USER IS ENCOURAGED TO TRY TO CORRECT THE INTERFERENCE BY ONE OR MORE OF THE FOLLOWING MEASURES:

- REORIENT OR RELOCATE THE RECEIVING ANTENNA.
- INCREASE THE SEPARATION BETWEEN THE EQUIPMENT AND RECEIVER.
- CONNECT THE EQUIPMENT INTO AN OUTLET ON A CIRCUIT DIFFERENT FROM THAT TO WHICH THE RECEIVER IS CONNECTED.
- CONSULT THE DEALER OR AN EXPERIENCED RADIO/TV TECHNICIAN FOR HELP.

**CAUTION:**

THE MANUFACTURER IS NOT RESPONSIBLE FOR ANY RADIO OR TV INTERFERENCE CAUSED BY UNAUTHORIZED MODIFICATIONS TO THIS EQUIPMENT. SUCH MODIFICATIONS COULD VOID THE USER'S AUTHORITY TO OPERATE THE EQUIPMENT.

THIS DEVICE COMPLIES WITH PART 15 OF THE FCC RULES. OPERATION IS SUBJECT TO THE FOLLOWING TWO CONDITIONS: (1) THIS DEVICE MAY NOT CAUSE HARMFUL INTERFERENCE, AND (2) THIS DEVICE MUST ACCEPT ANY INTERFERENCE RECEIVED, INCLUDING INTERFERENCE THAT MAY CAUSE UNDESIRE OPERATION.

THIS DEVICE COMPLIES WITH INDUSTRY CANADA'S LICENCE-EXEMPT RSSS. OPERATION IS SUBJECT TO THE FOLLOWING TWO CONDITIONS: (1) THIS DEVICE MAY NOT CAUSE INTERFERENCE; AND (2) THIS DEVICE MUST ACCEPT ANY INTERFERENCE, INCLUDING INTERFERENCE THAT MAY CAUSE UNDESIRE OPERATION OF THE DEVICE.