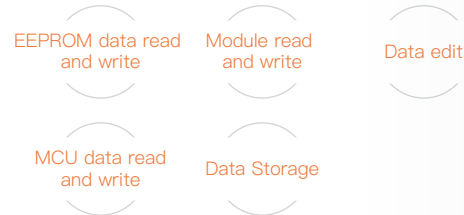


1. Overview

MINI PROG is a professional and stable, multifunction, intelligent, flexible programming device for many different chips, support connection by smartphone, easy to use!



2. Main Functions



3. Performance



Capacity
2550mAh



Normal Working Hour
>5H



Standby Time
>5D

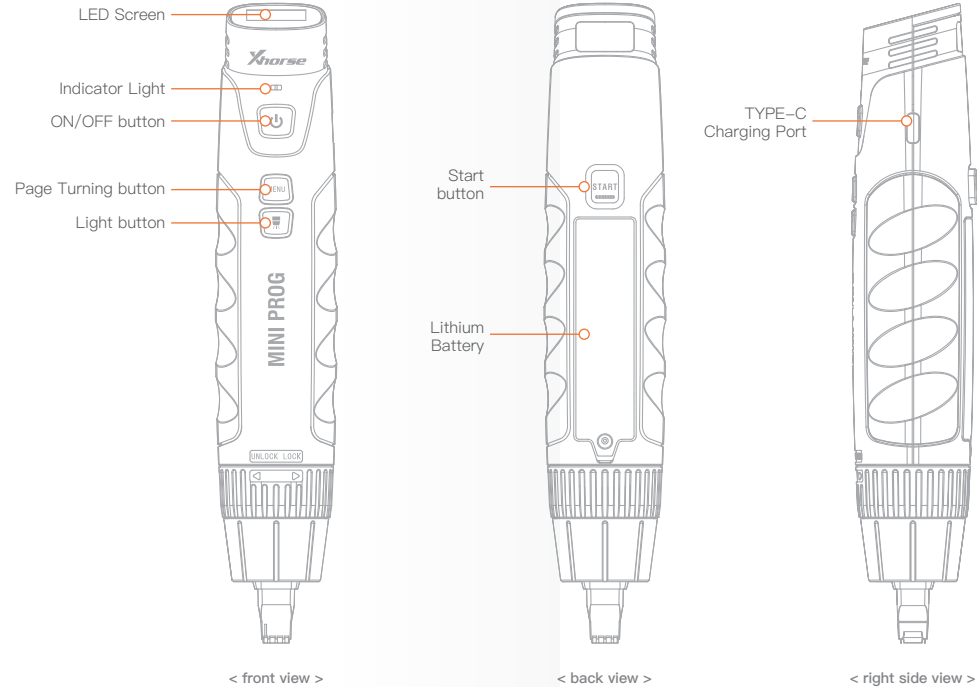


Recharging Current
1.5A

4. Package List

Type	Quantity
MINI PROG	1
Push-type SOP8 1# test connector	1
Push SOP8 wide body 2# test connector	1
Push SOP8 3# test connector	1
DB15 cable	1
EEPROM Adaptor	1
USB convert TYPE-C cable	1
Needle Set	1set
Instructions	1

5. Appearance



6. Quick Setting

6.1 Press the ON/OFF

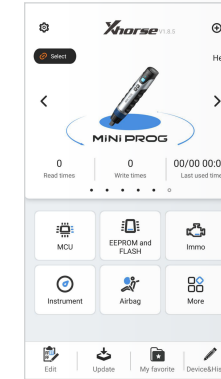
button to display the boot screen.



< MINI PROG boot screen >

6.2 Power off

Press and hold ON/OFF button for 4 seconds, MINI PROG will be shut down.



< APP·MINI PROG Home >

6.3 Button explanation

- ① **ON/OFF button:** Press ON/OFF button for 1~2 seconds to turn on MINI PROG, press and hold for 4 seconds to turn off MINI PROG.
- ② **Start button:** When MINI PROG is on and preparation is ready, press 'Start' to work.
- ③ **Page Turning button:** When the screen cannot display all content, click to 'Page Turning' to view related information.
- ④ **Light button:** After MINI PROG is connected to one of the test connectors 1, 2, and 3, if needed, press the 'Light' button, the corresponding test connector light on, press again to turn it off.



Xhorse APP



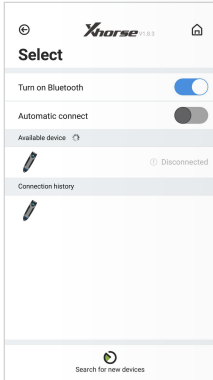
DOWNLOADABLE FROM **GOOGLE PLAY STORE** AND **APP STORE**.



6.4 Connect to smartphone

MINI PROG support connect to smartphone by Bluetooth or WIFI.

① Click 【Connect to device】 from HOME page,available device serial number will be shown,according to SN, select proper device to connect.



② There are 2 connection ways for user selection: Bluetooth or WIFI,according to the connection way, device will be connected automatically.

6.5 Recharging

Please use a 1.5A charger connect to the USB port for recharging. MINI PROG. When charging in power-on status, the battery icon in device status information will be shown recharging status,indicator light on.

When charging in power-off status, the indicator light on; after battery fully charged,device will be stopped charging automatically for protecting battery.

7.Maintenance

- Do not hit it violently、shake or throw it.
- Do not wash main body and other parts with water or other liquid directly,and do not clean MINI PROG with wet cloth.
- Do not place MINI PROG on high temperature, high humidity or dusty places.
- Do not take MINI PROG apart or retrofit it in private otherwise mainboard will be damaged or battery will on fire and etc.
- Please keep screen,test connectors and other mian parts well and prevent sharp objects to do damage to them.

8.Warranty and after-sale instructions

MINI PROG has one year warranty,and it is based on the date on the transaction voucher;If do not have transaction voucher or lost it, the factory date recorded by the manufacturer will prevail.

- ※ Situations on the below can not get free repairment
- Damage caused by not following the use instructions.
- Damage caused by repairing or retrofitting in private.
- Damage caused by fall,crash or inappropriate voltage.
- Damage caused by inevitable force.
- Damage caused by using in harsh environment or on the vehicle and ship for a long time;
- Get main body dirty and worn due to use.

Please get in contact with dealer or scan the QR code behind the instruction,download Xhorse official APP to get after-sale and technical support.

All rights reserved.Any individual or organization is forbidden to copy or spread in any form from this manual without permission.

Due to product improvements, the contents of this manual may change without notice.

FCC statements:

This device complies with part 15 of the FCC rules. Operation is subject to the following two conditions:

- (1) this device may not cause harmful interference, and
- (2) this device must accept any interference received, including interference that may cause undesired operation.

NOTE: The manufacturer is not responsible for any radio or TV interference caused by unauthorized modifications or changes to this equipment. Such modifications or changes could void the user's authority to operate the equipment.



NOTE: This equipment has been tested and found to comply with the limits for a Class B digital device, pursuant to part 15 of the FCC Rules. These limits are designed to provide reasonable protection against harmful interference in a residential installation. This equipment generates uses and can radiate radio frequency energy and, if not installed and used in accordance with the instructions, may cause harmful interference to radio communications. However, there is no guarantee that interference will not occur in a particular installation. If this equipment does cause harmful interference to radio or television reception, which can be determined by turning the equipment off and on, the user is encouraged to try to correct the interference by one or more of the following measures:

- Reorient or relocate the receiving antenna.
- Increase the separation between the equipment and receiver.
- Connect the equipment into an outlet on a circuit different from that to which the receiver is connected.
- Consult the dealer or an experienced radio/TV technician for help.

The device has been evaluated to meet general RF exposure requirement, The device can be used in portable exposure condition without restriction Federal Communication Commission (FCC) Radiation Exposure Statement Power is so low that no RF exposure calculation is needed.

FCC ID:2A14T-XDP00



MINI PROG User UManual

